

Article

Settable Polymeric Autograft Extenders in a Rabbit Radius Model of Bone Formation

Lauren A. Boller ¹, Madison A.P. McGough ¹, Stefanie M. Shiels ², Craig L. Duvall ¹, Joseph C. Wenke ² and Scott A. Guelcher ^{1,3,4,*}

¹ Department of Biomedical Engineering, Vanderbilt University, 2201 West End Ave, Nashville, TN 37235, USA; lauen.a.boller@vanderbilt.edu (L.A.B.); madison.a.mcgough@gmail.com (M.A.P.M.); craig.duvall@vanderbilt.edu (C.L.D.)

² U.S. Army Institute of Surgical Research, 3698 Chambers Rd, San Antonio, TX 78234, USA; stefanie.m.shiels.ctr@mail.mil (S.M.S.); joseph.c.wenke.civ@mail.mil (J.C.W.)

³ Department of Chemical and Biomolecular Engineering, Vanderbilt University, 2201 West End Ave, Nashville, TN 37235, USA

⁴ Vanderbilt Center for Bone Biology, Vanderbilt University Medical Center, 1211 Medical Center Dr., Nashville, TN 37212, USA

* Correspondence: scott.guelcher@vanderbilt.edu

Supplemental Figures

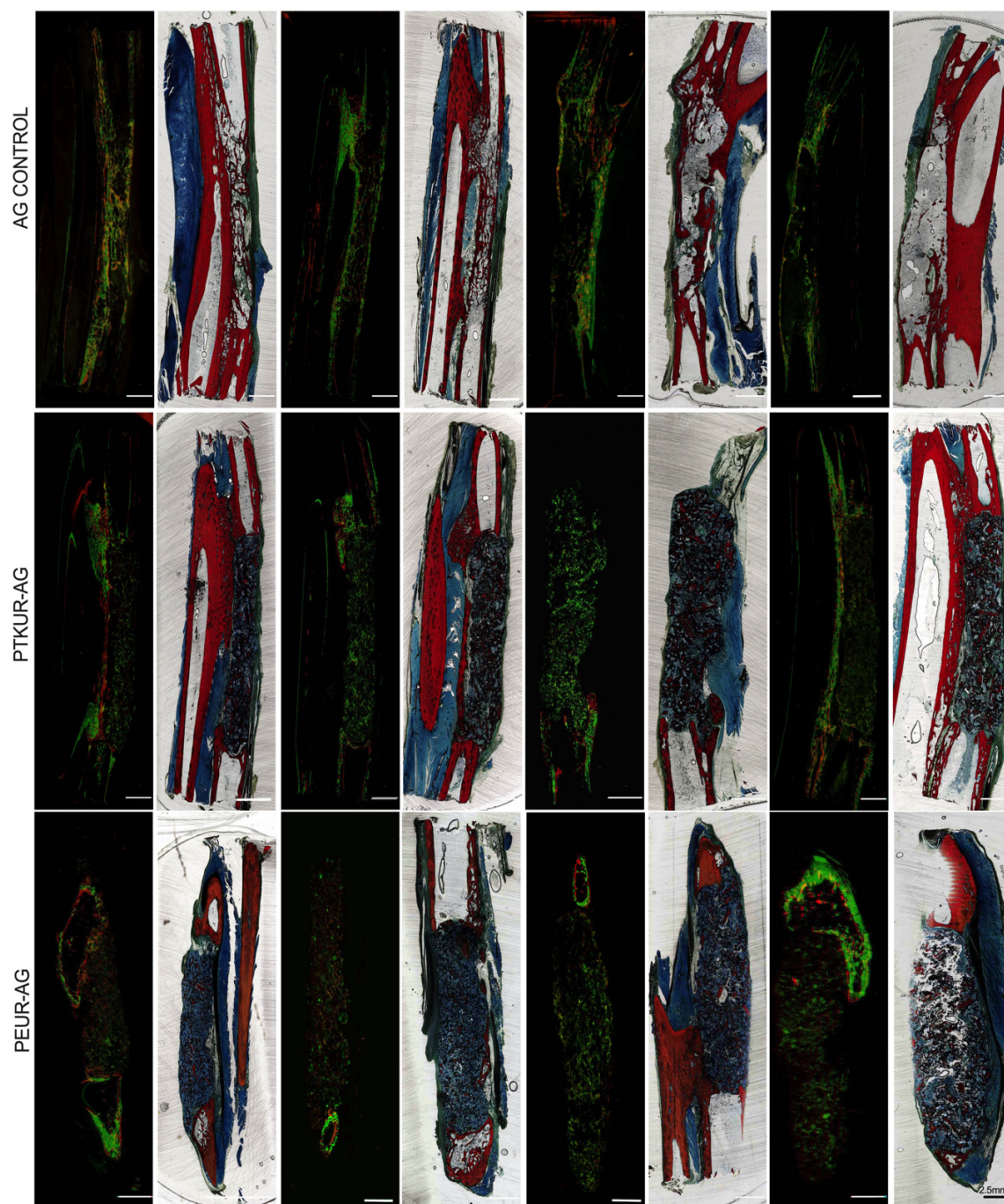


Figure S1. Fluorescent and Sanderson's Rapid stained histological sections.

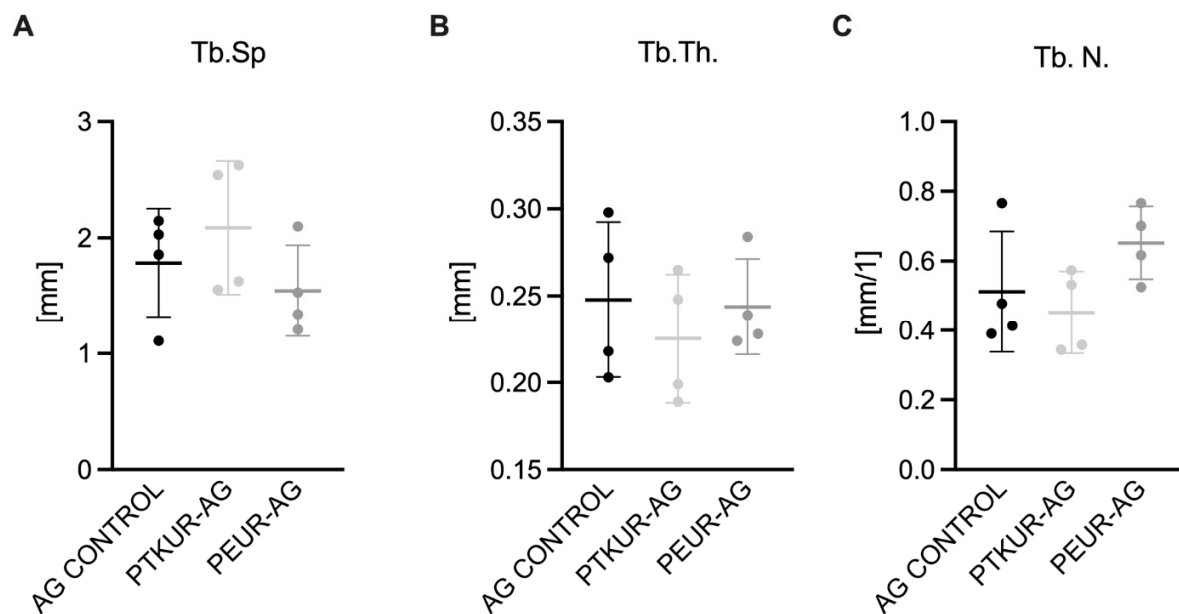


Figure S2. Bone Morphometric parameters A) Trabecular Spacing, B) Trabecular Thickening, and C) Trabecular Number.