

Article

Is There a Relationship between Surface Wettability of Structured Surfaces and Lyophobicity toward Liquid Metals?

Stephan Handschuh-Wang ^{1,*}, Lifei Zhu ¹, Tiansheng Gan ¹ and Tao Wang ²

¹ College of Chemistry and Environmental Engineering, Shenzhen University, Shenzhen 518055, China; 1800221021@email.szu.edu.cn (L.Z.); gantiansheng@szu.edu.cn (T.G.)

² Functional Thin Films Research Center, Shenzhen Institutes of Advanced Technology, Chinese Academy of Sciences, Shenzhen 518055, China; tao.wang1@siat.ac.cn

* Correspondence: stephan@szu.edu.cn; Tel.: (+86)-755-2653-6627

Received: 20 April 2020; Accepted: 13 May 2020; Published: date

Supporting information

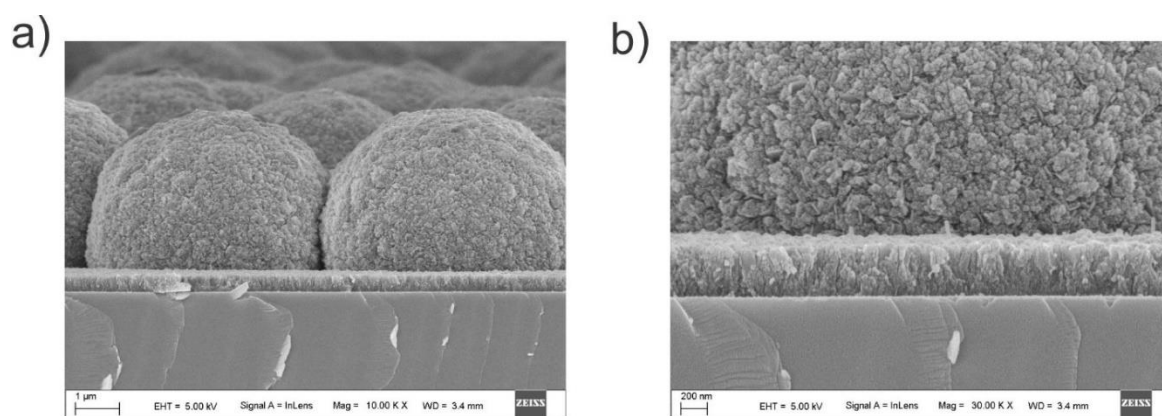


Figure S1. Structured diamond coating on Si. SEM cross-sectional view of the diamond coating (a) and its magnification (b).



© 2020 by the authors. Submitted for possible open access publication under the terms and conditions of the Creative Commons Attribution (CC BY) license (<http://creativecommons.org/licenses/by/4.0/>).