

Supplementary Materials: Influence of Granulometry on Thermal and Mechanical Properties of Cement Mortars Containing Expanded Perlite as a Lightweight Aggregate

Matías Leyton-Vergara ¹, Alexis Pérez-Fargallo ¹, Jesús Pulido-Arcas ¹, Galo Cárdenas-Triviño ² and Jeremy Piggot-Navarrete ^{3,*}

¹ Department of Building Science, University of Bio-Bio, Concepción, 4030000, Chile.

² Department of Wood Engineering, University of Bio-Bio, Concepción, 4030000, Chile.

³ Department of Design and Theory of Architecture, University of Bio-Bio, Concepción, 4030000, Chile.

* Correspondence: jpiggot@ubiobio.cl

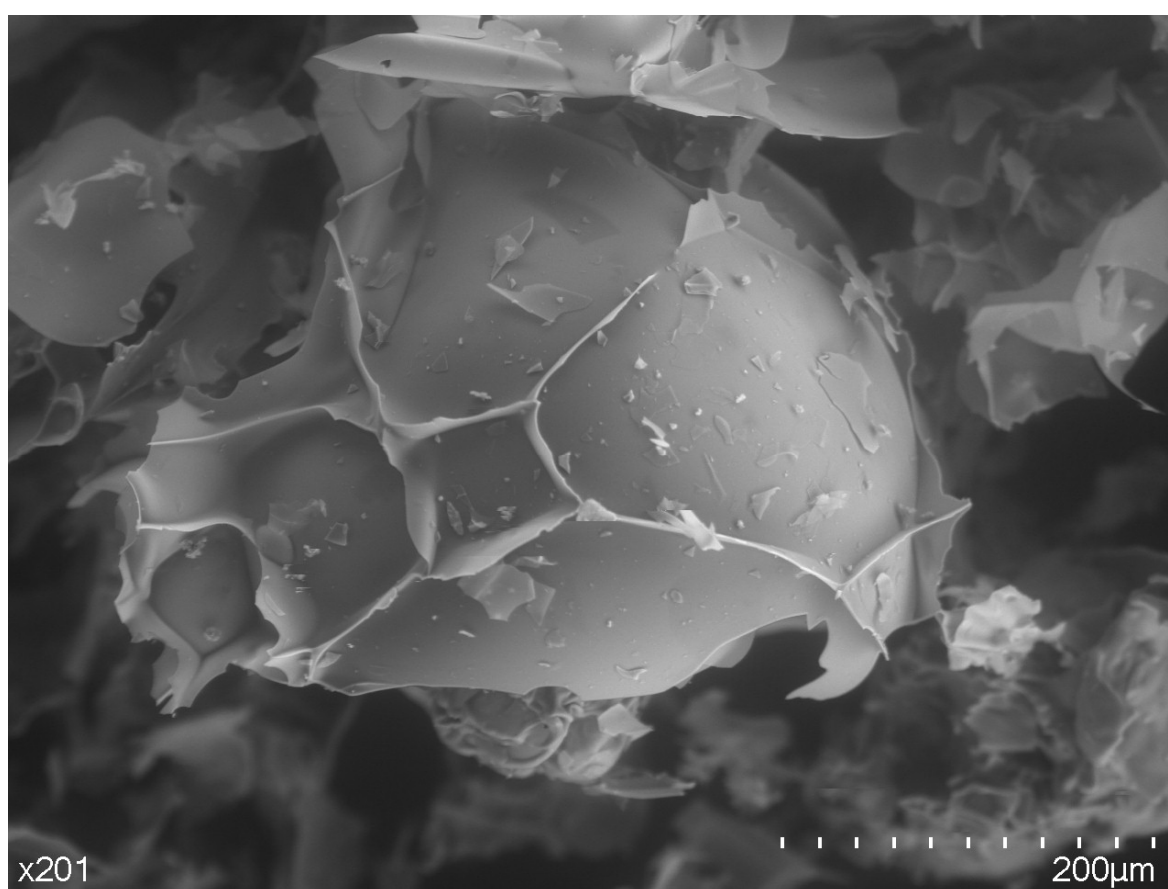


Figure S1. 1-S0.15—SEM image of expanded perlite size 0.15 mm.

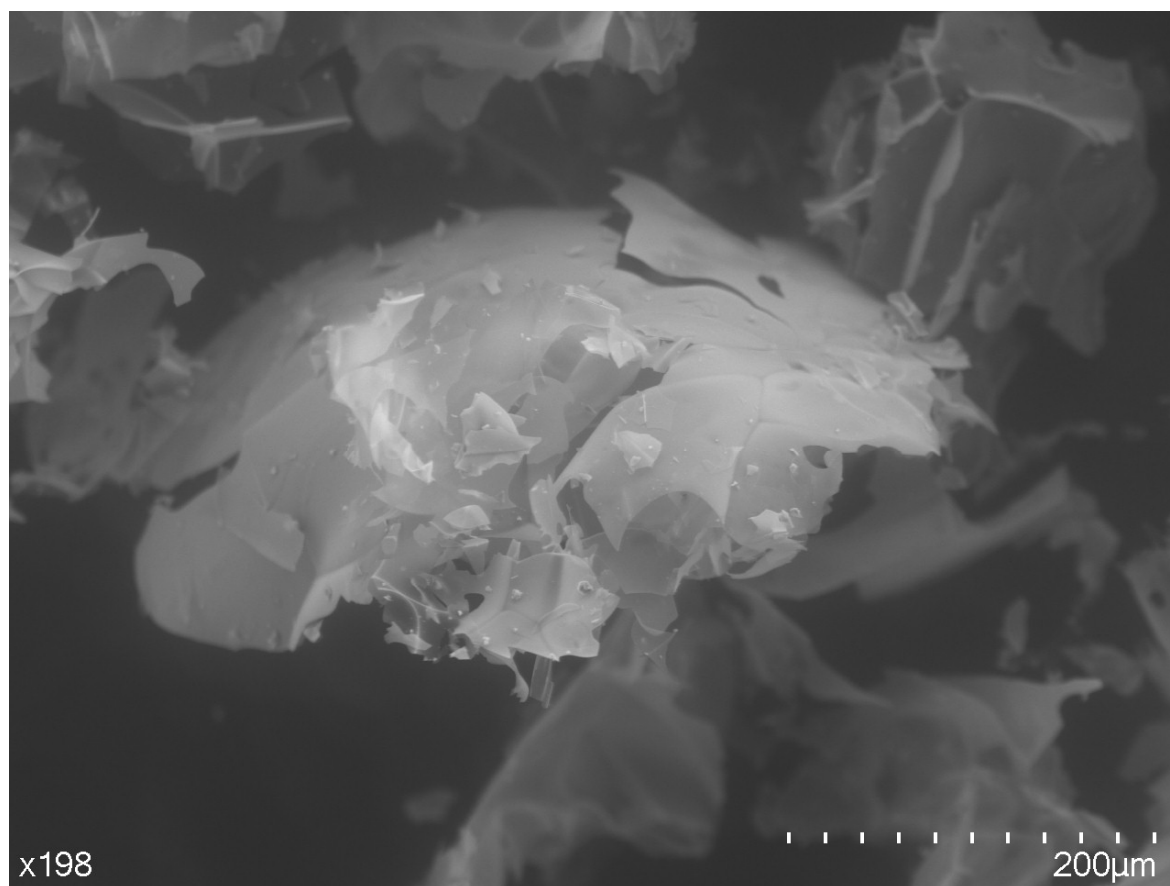


Figure S2. 2-S0.15—SEM image of expanded perlite size 0.15 mm.

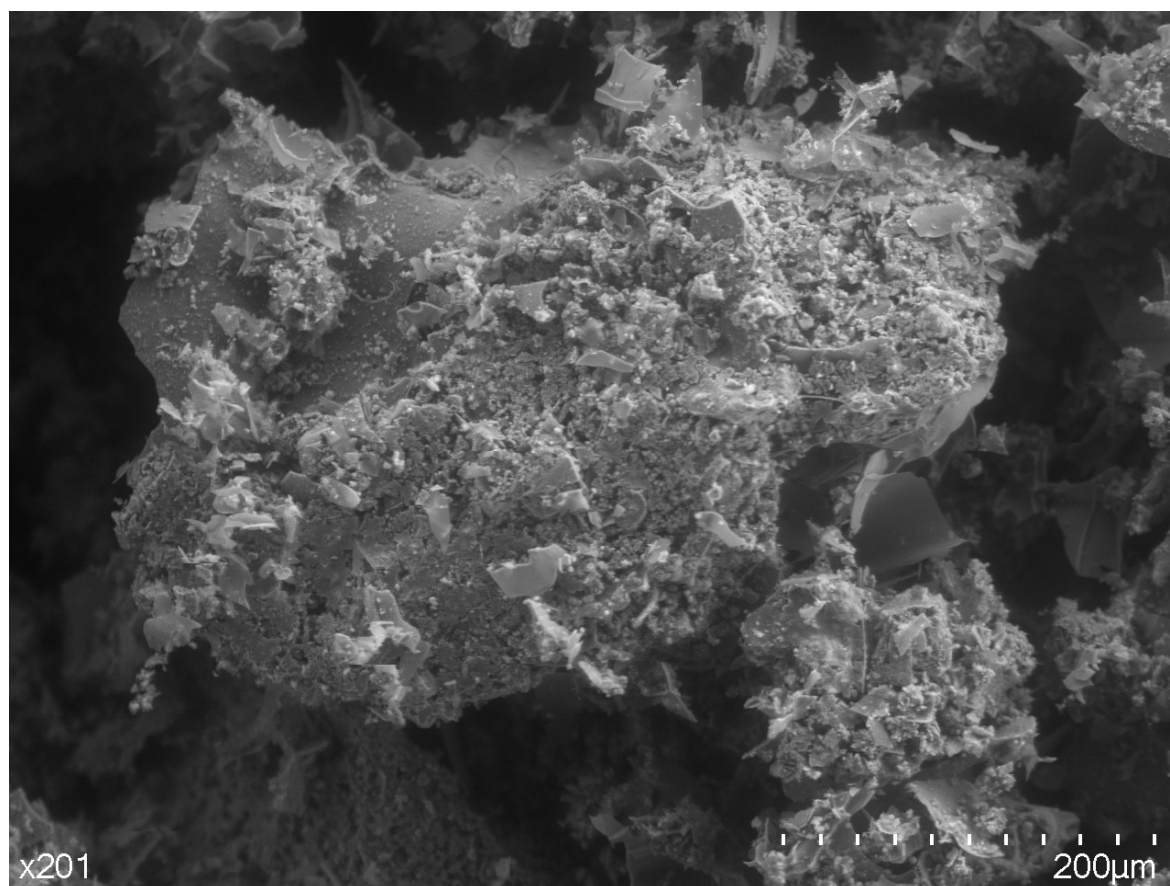


Figure S3. 3-S0.15—SEM image of cement interface for 0.15 mm.

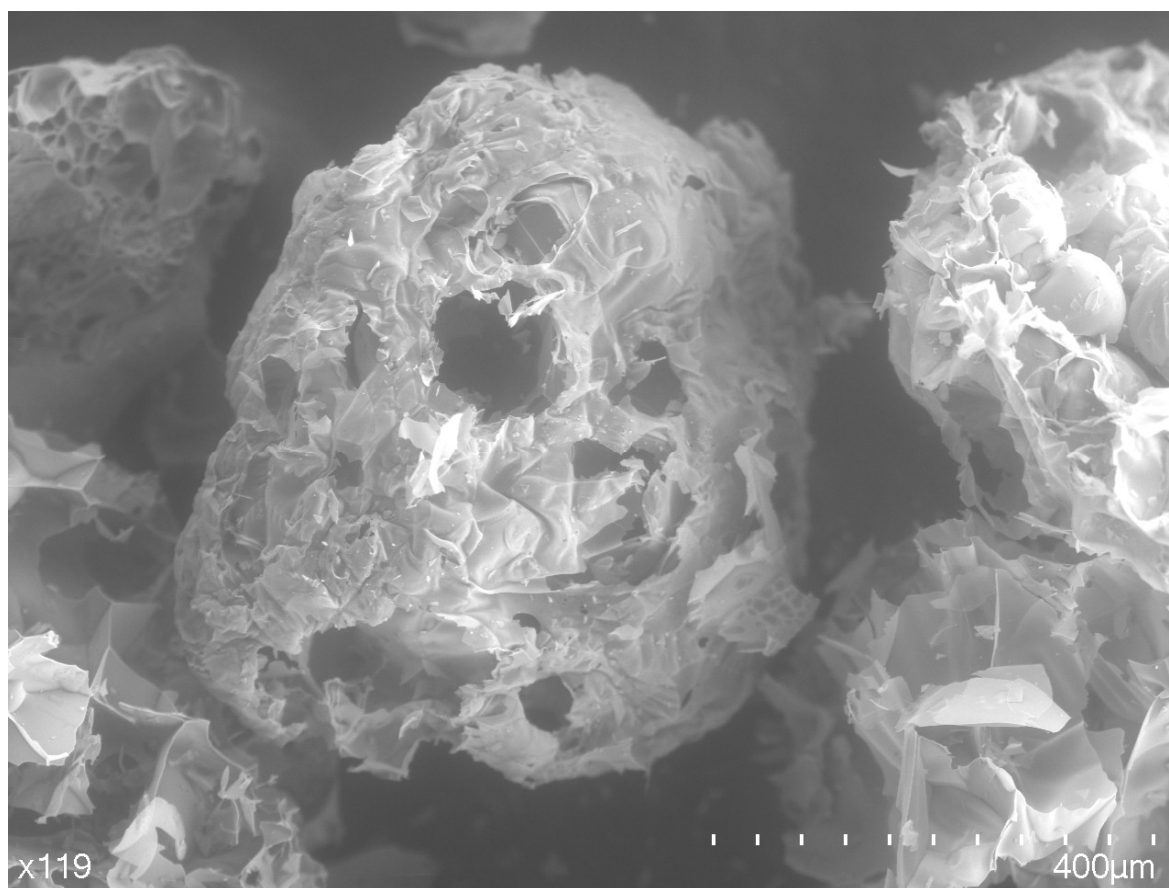


Figure S4. 1-S0.30—SEM image of expanded perlite size 0.30 mm.

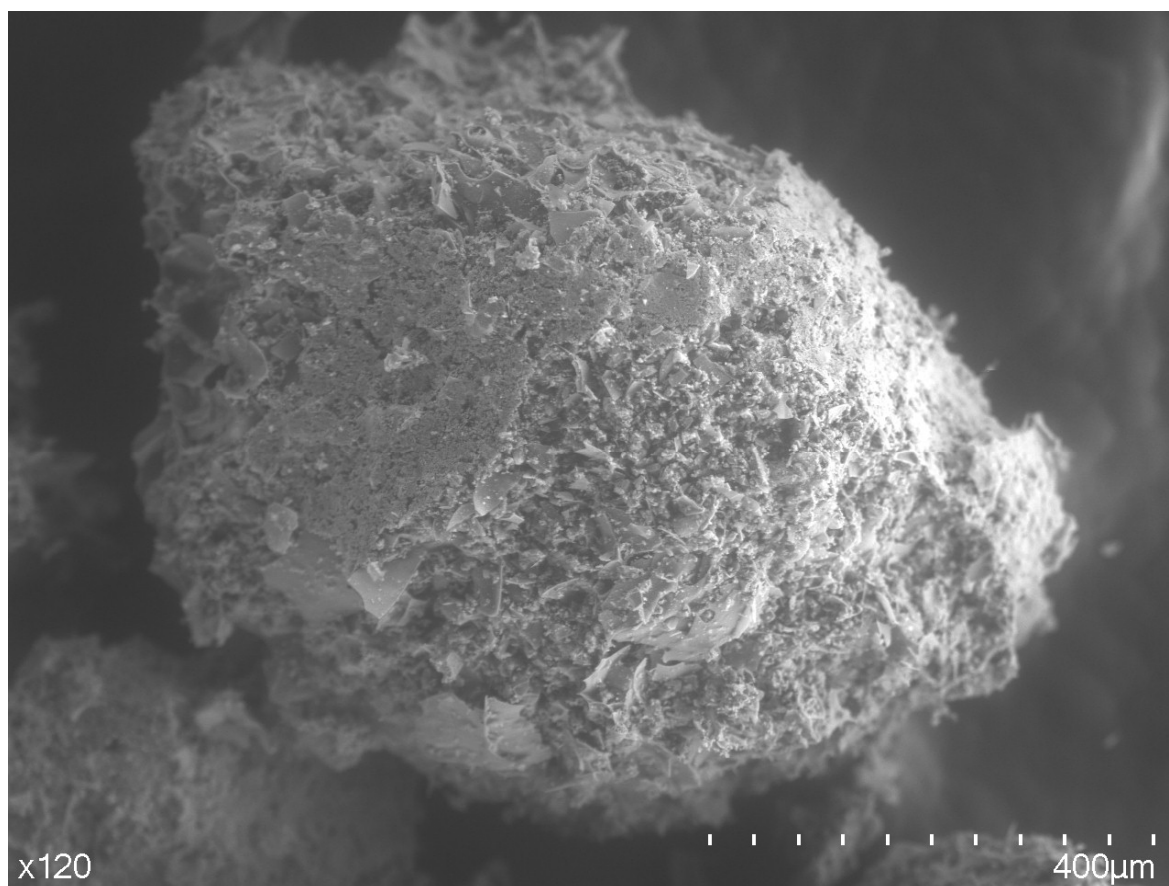


Figure S5. 2-S0.30—SEM image of cement interface for 0.30 mm.

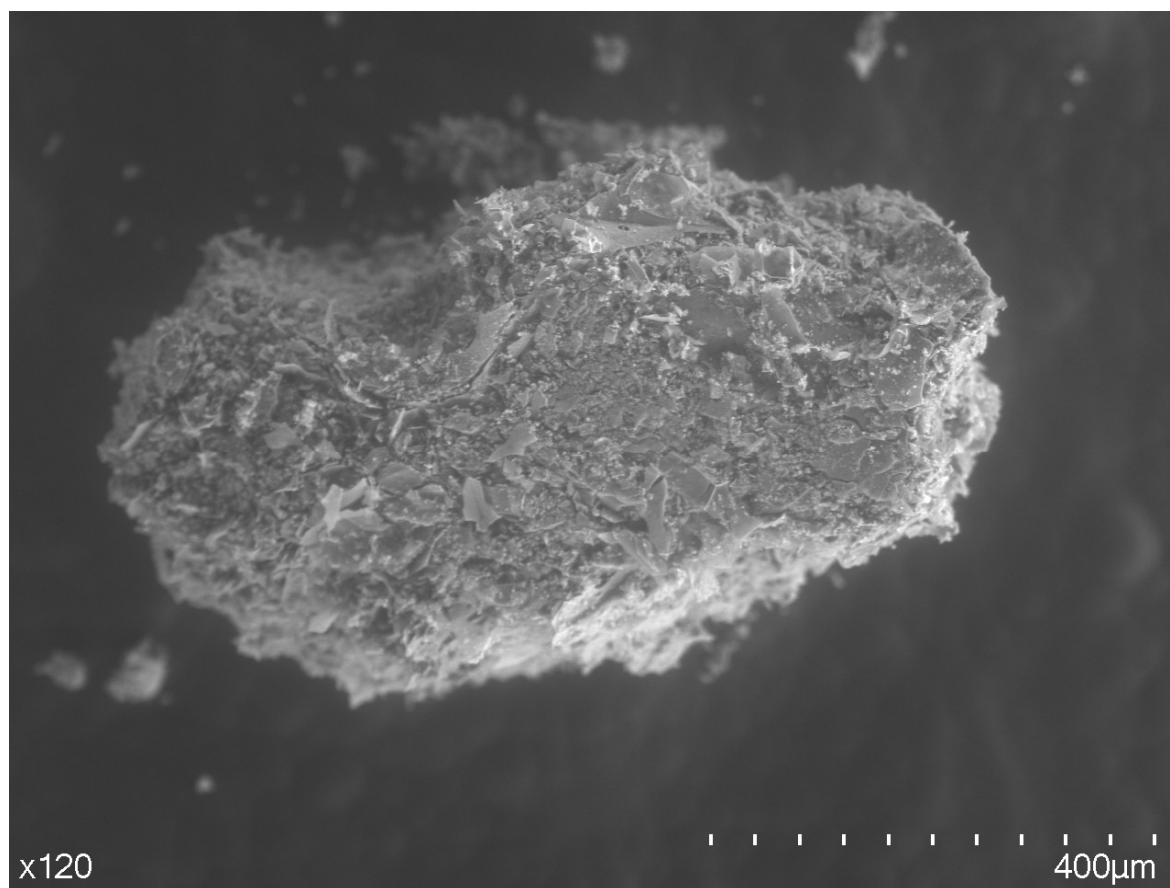


Figure S6. 3-S0.30—SEM image of cement interface for 0.30 mm.

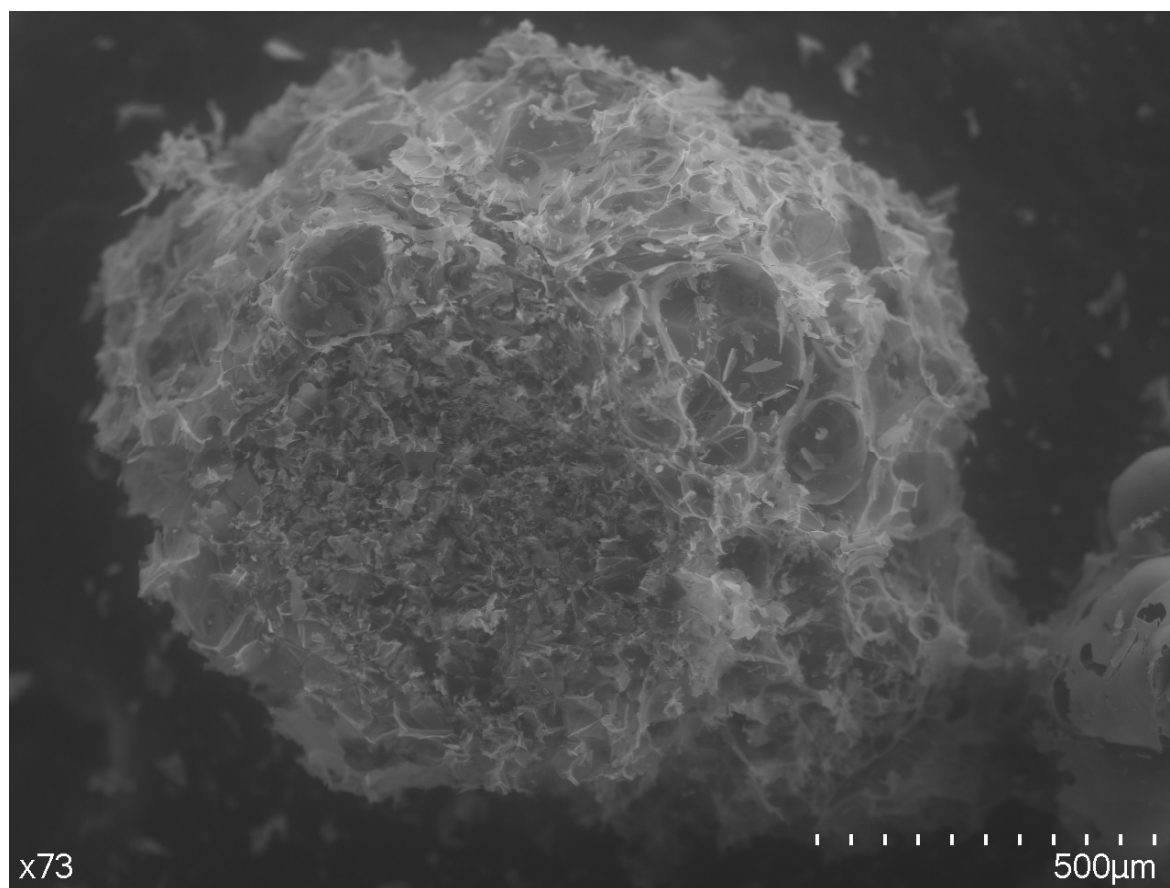


Figure S7. 1-S0.60—SEM image of expanded perlite size 0.60 mm

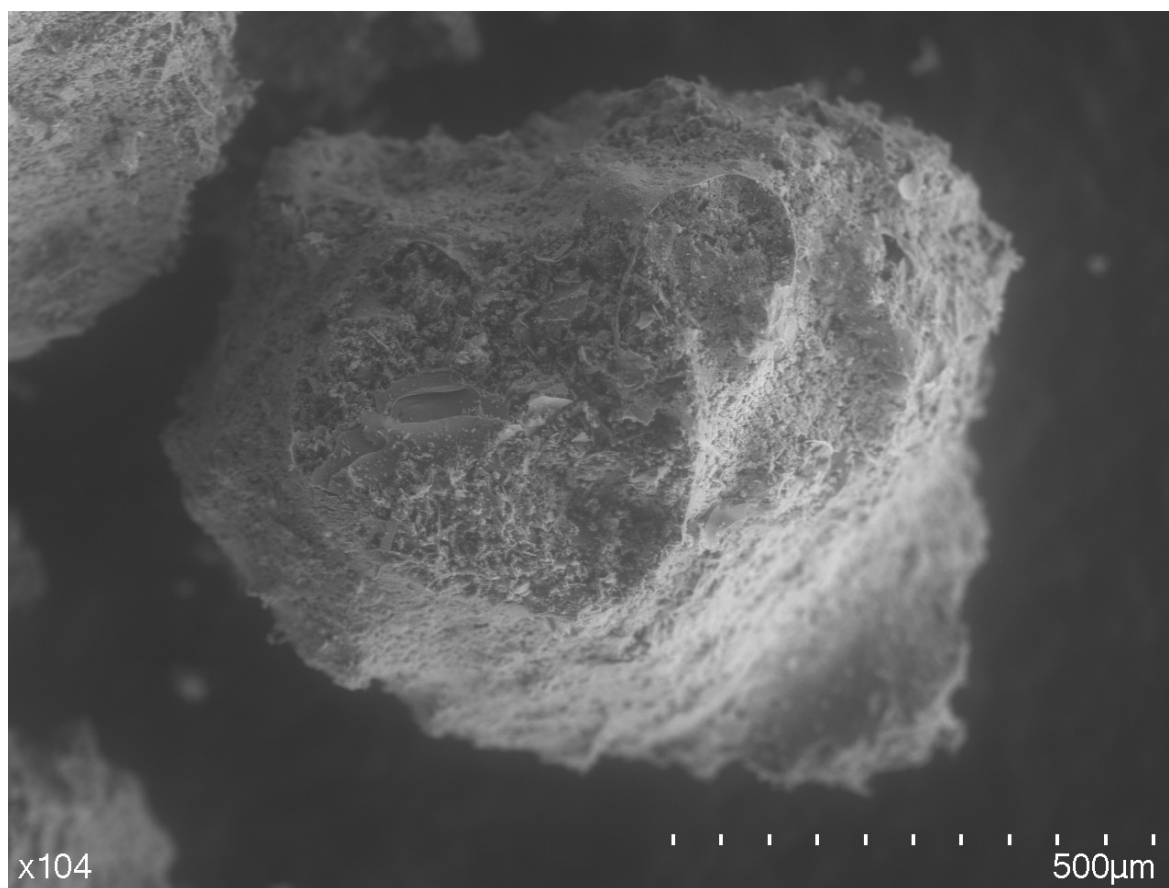


Figure S8. 2-S0.60—SEM image of cement interface for 0.60 mm.

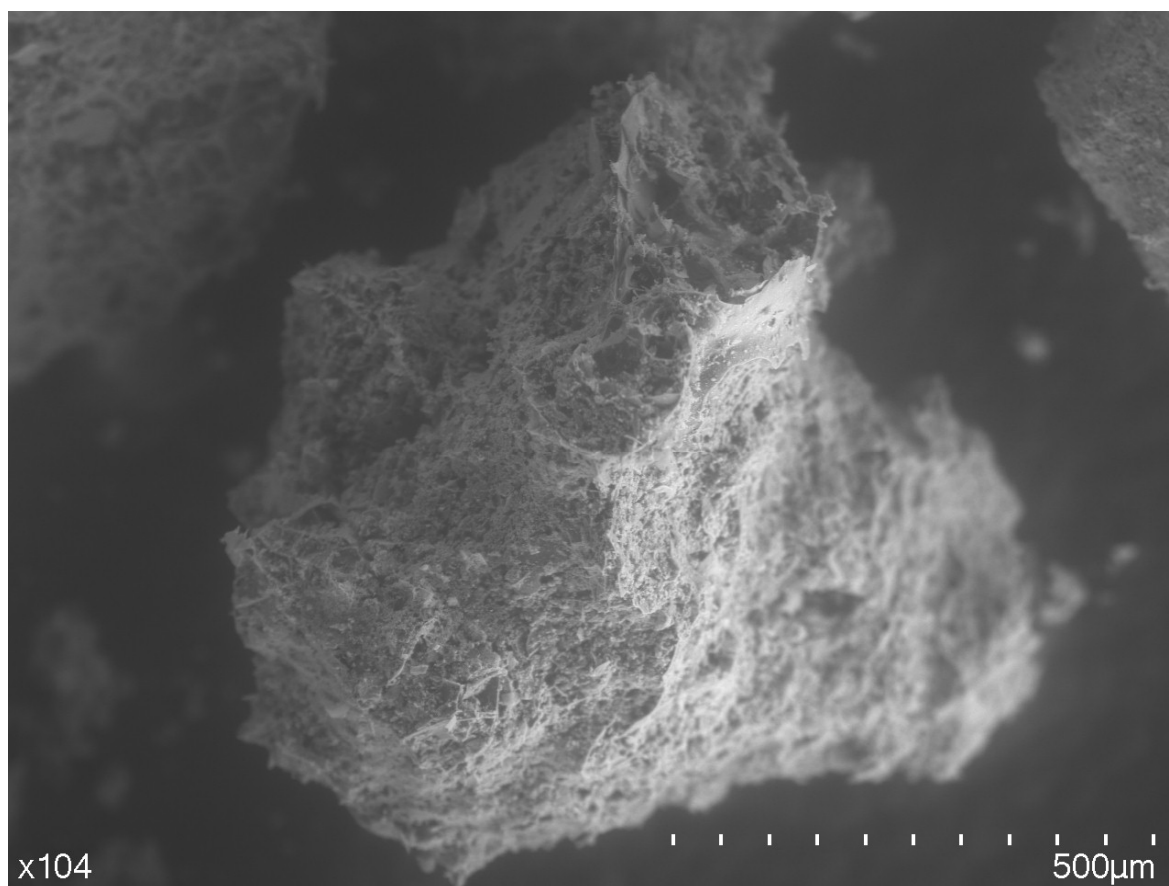


Figure S9. 3-S0.60—SEM image of cement interface for 0.60 mm.

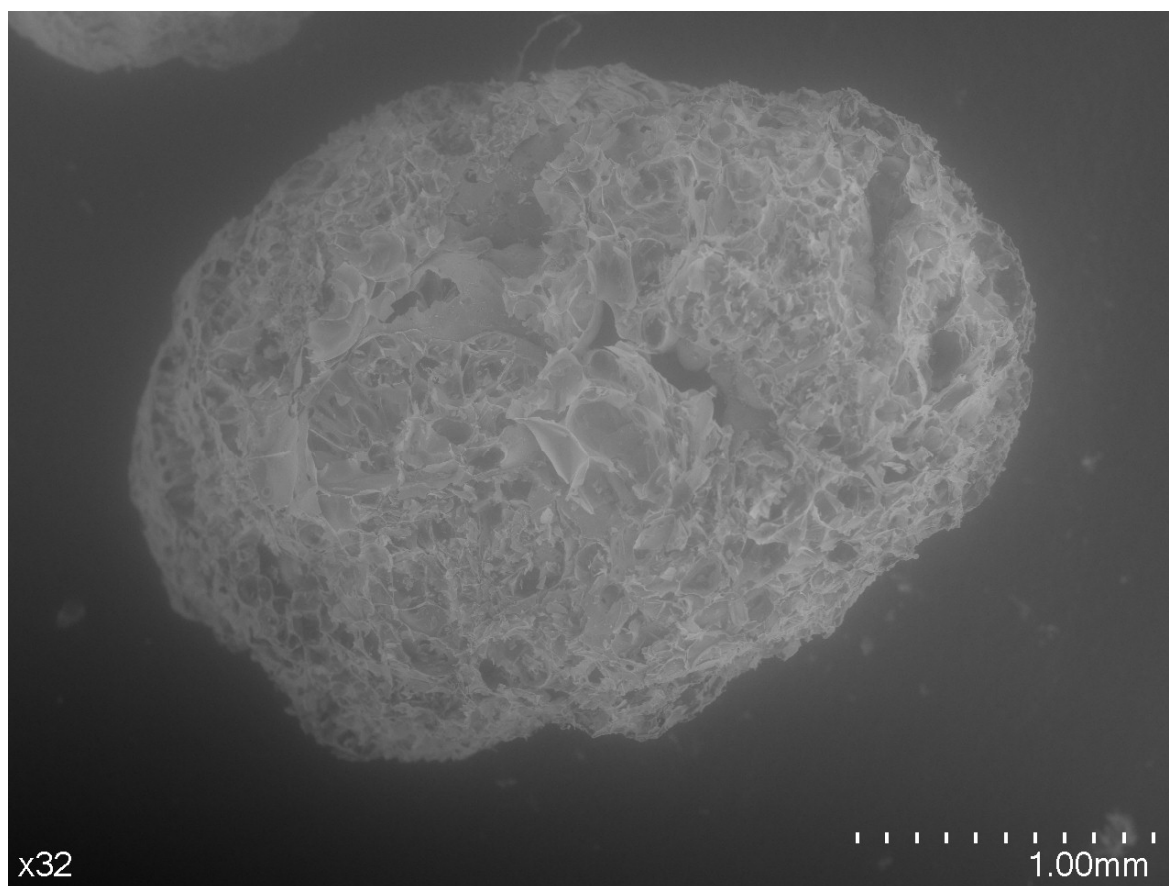


Figure S10. 1-S1.18—SEM image of expanded perlite size 1.18 mm.

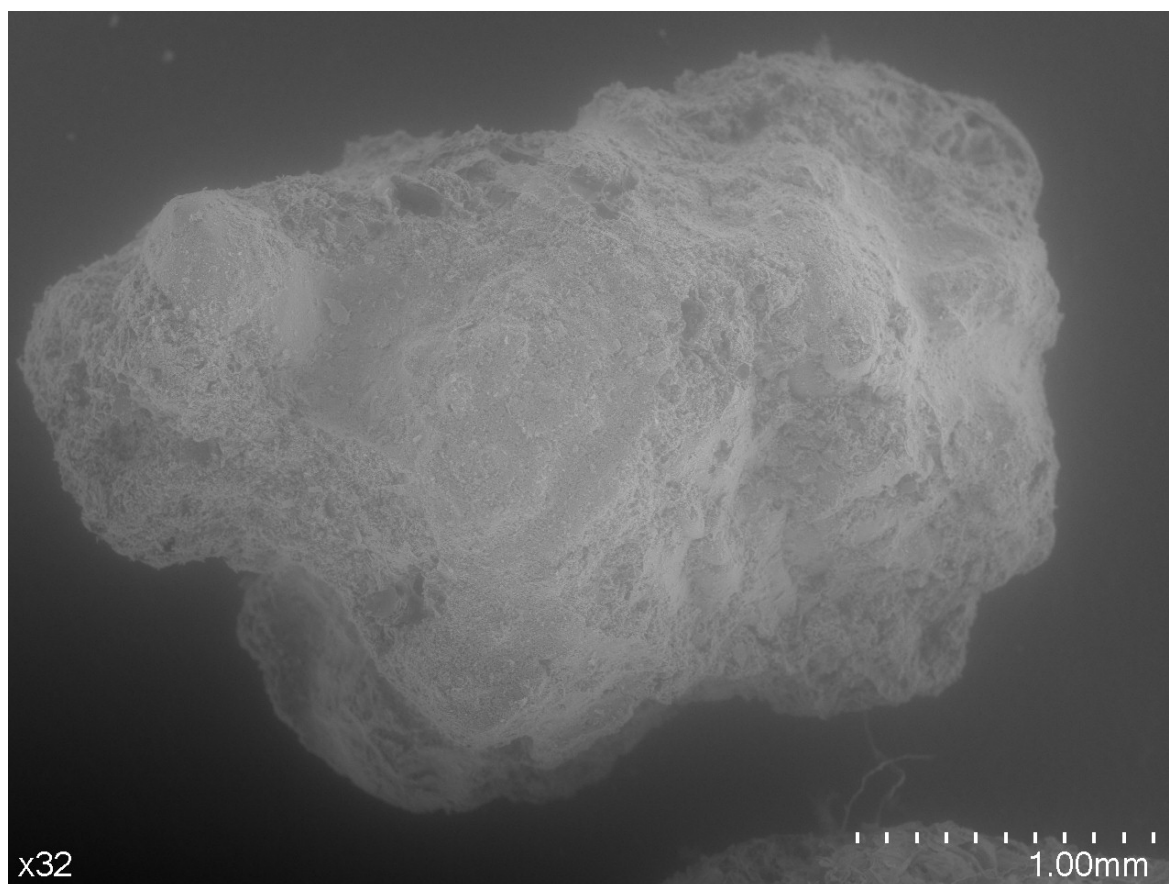


Figure S11. 2-S1.18—SEM image of cement interface for 1.18 mm.

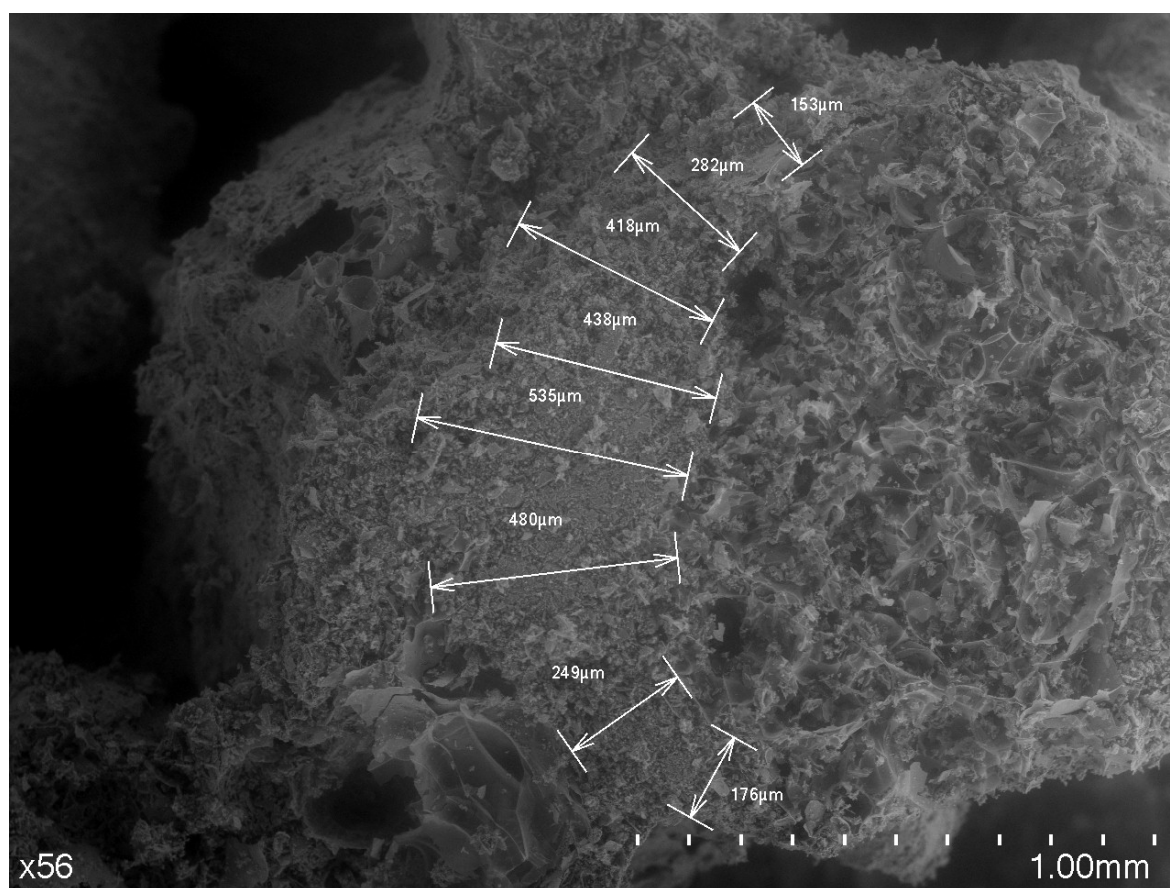


Figure S12. 3-S1.18—SEM image of cement interface for 1.18 mm.

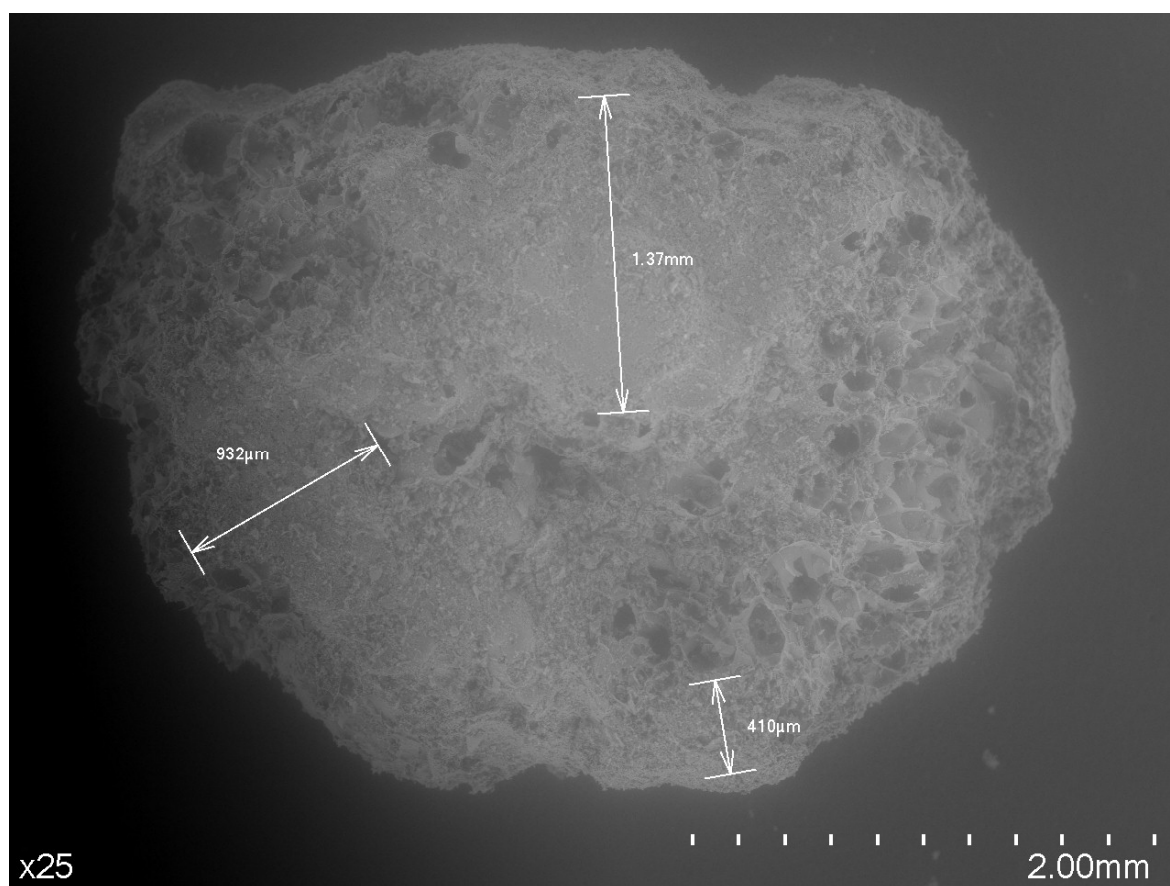


Figure S13. 1-S2.36—SEM image of cement interface for 2.36 mm.

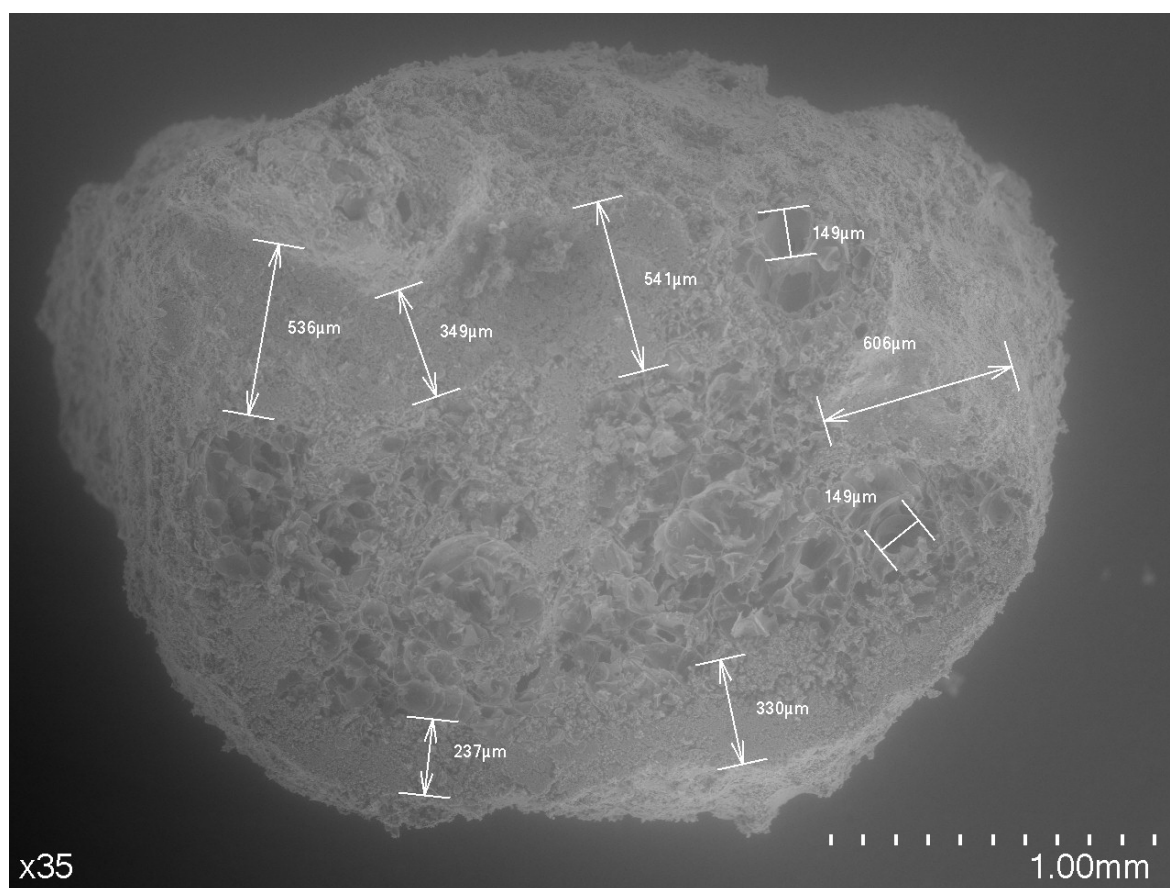


Figure S14. 2-S2.36—SEM image of cement interface for 2.36 mm.

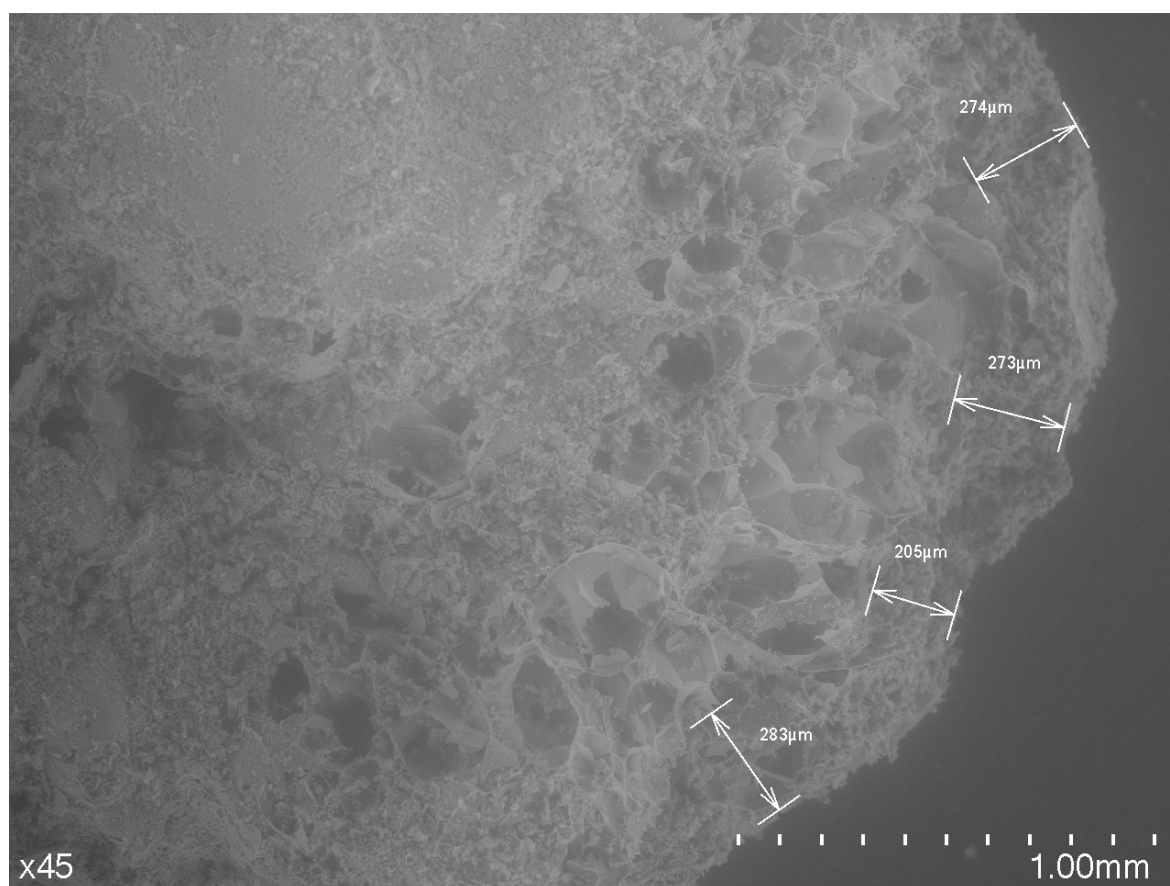


Figure S15. 3-S2.36—SEM image of cement interface for 2.36 mm.

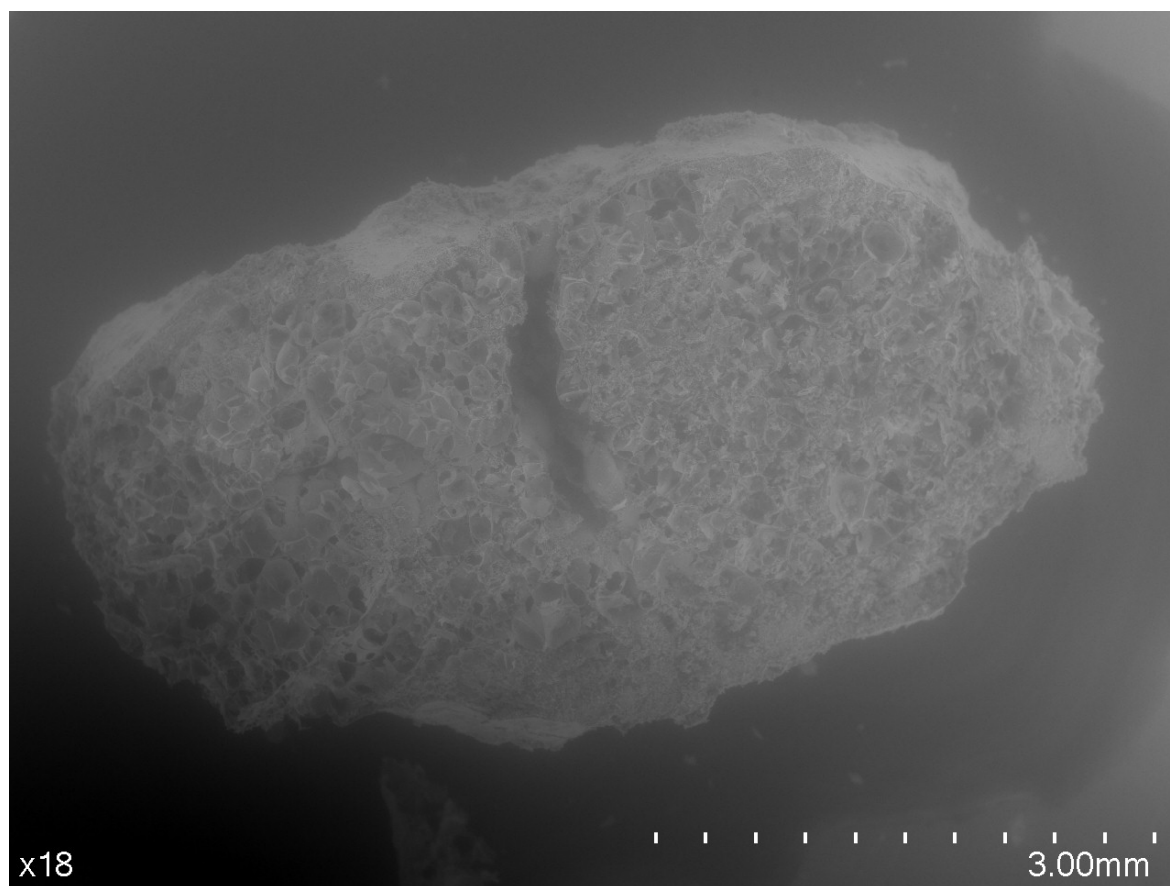


Figure S16. 1-S4.75—SEM image of cement interface for 4.75 mm.

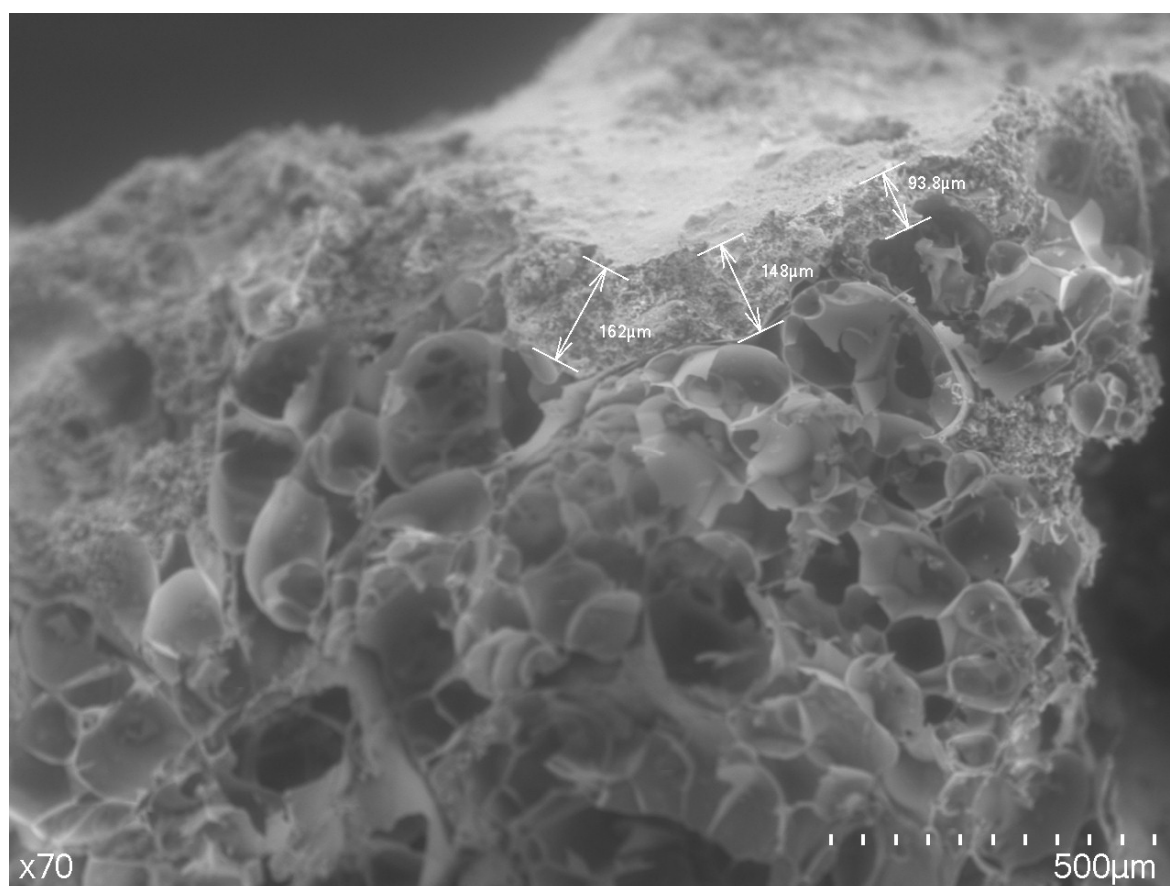


Figure S17. 2-S4.75—SEM image of cement interface for 4.75 mm.

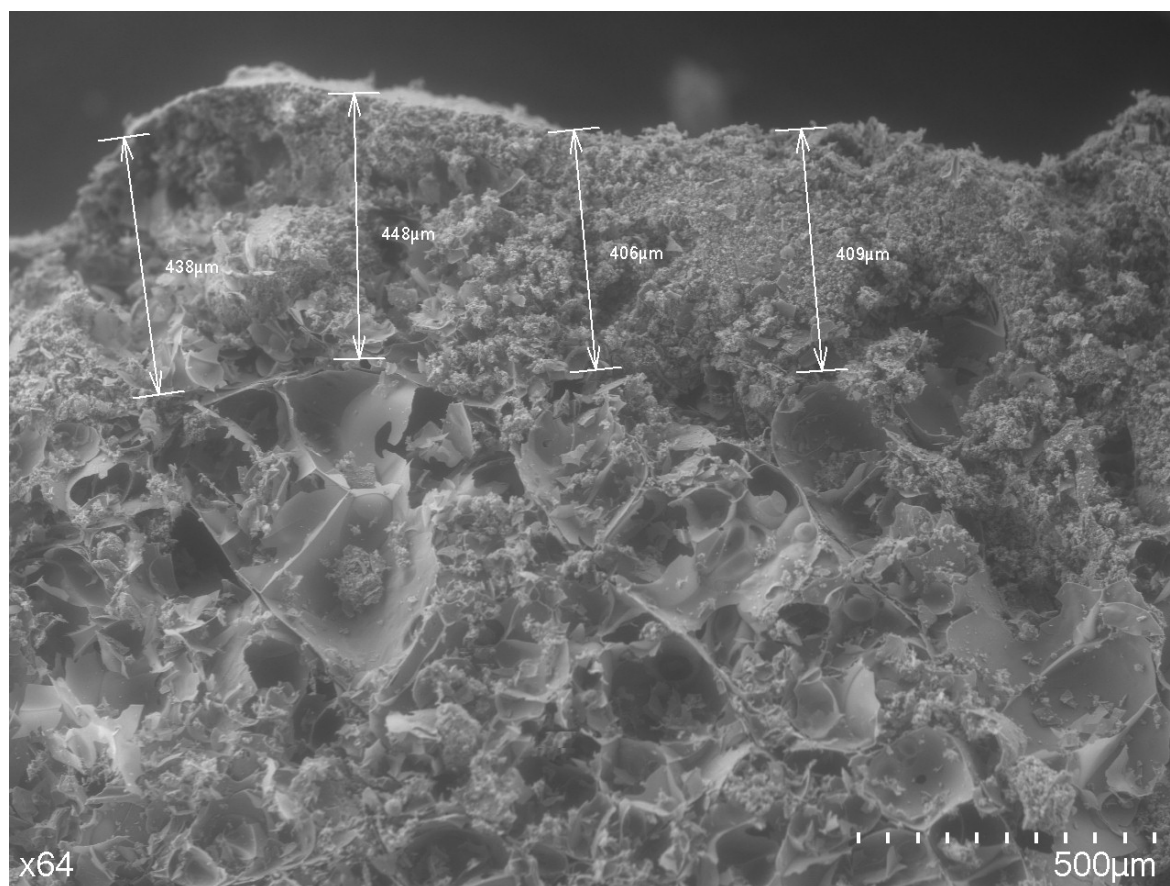


Figure S18. 3-S4.75—SEM image of cement interface for 4.75 mm.

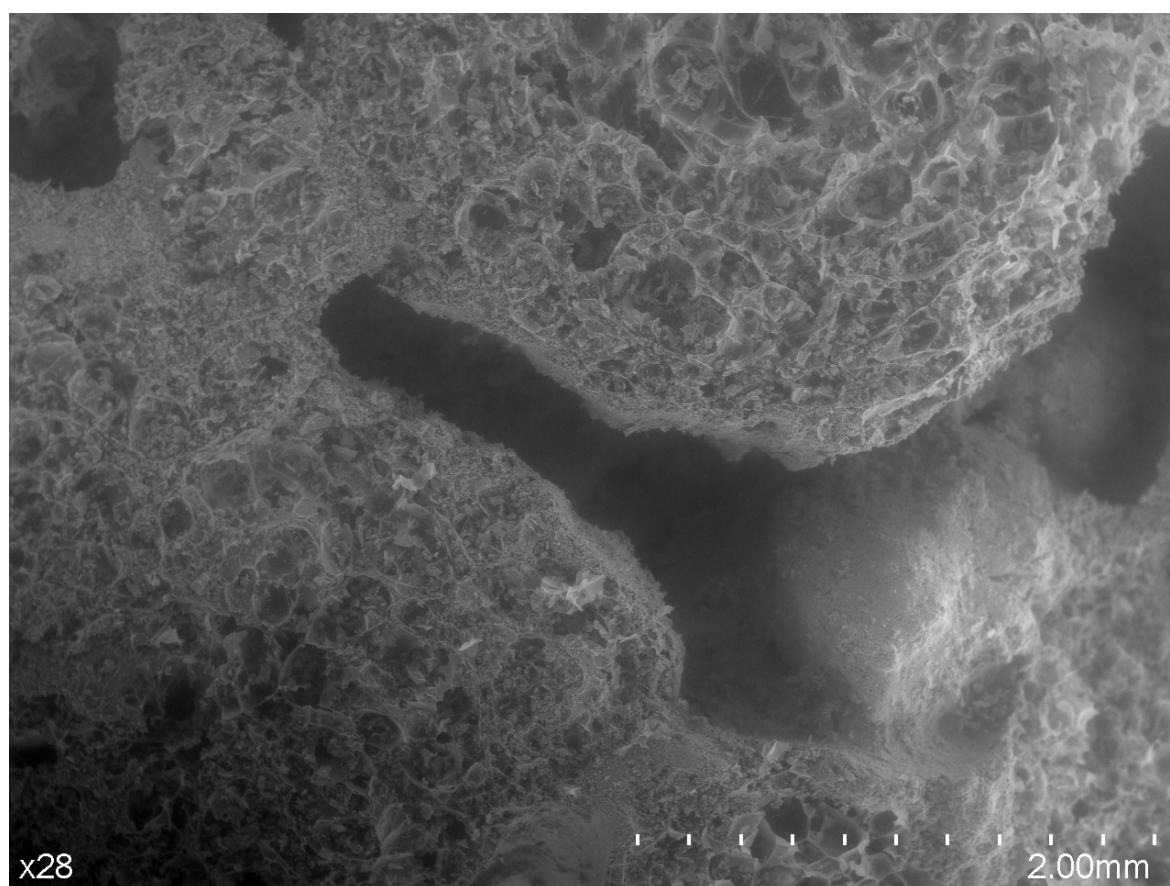


Figure S19. C-SG1—SEM image of expanded perlite and cement interface at C-SG.

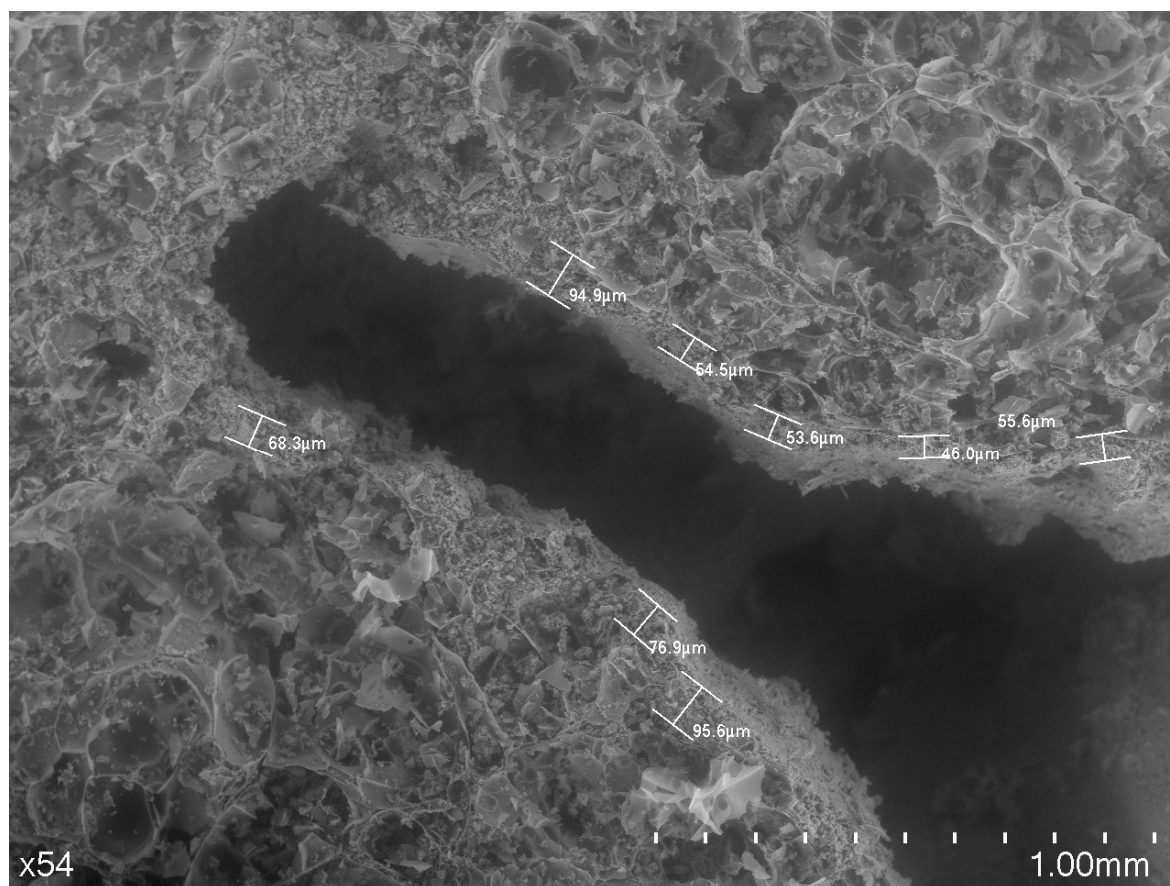


Figure S20. C-SG2—SEM image of expanded perlite and cement interface at C-SG.

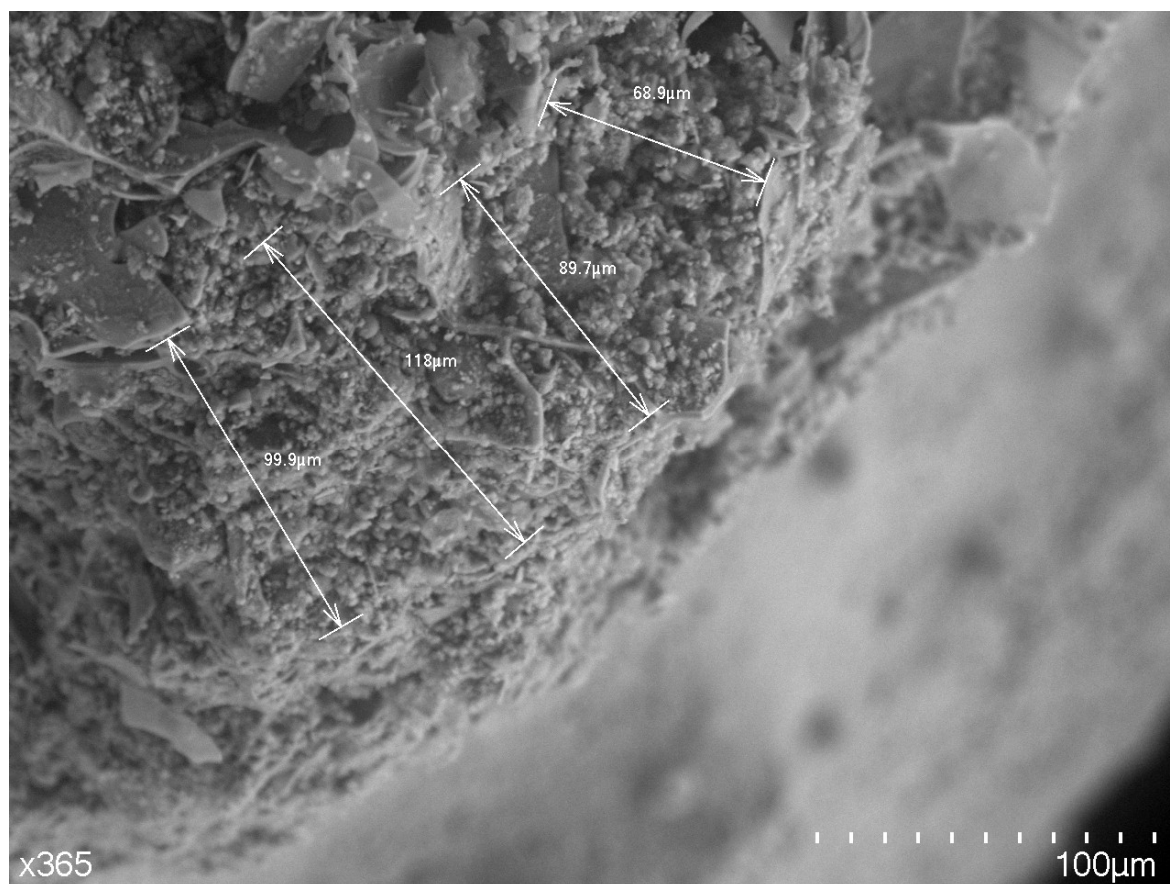


Figure S21. C-SG3—SEM image of expanded perlite and cement interface at C-SG.

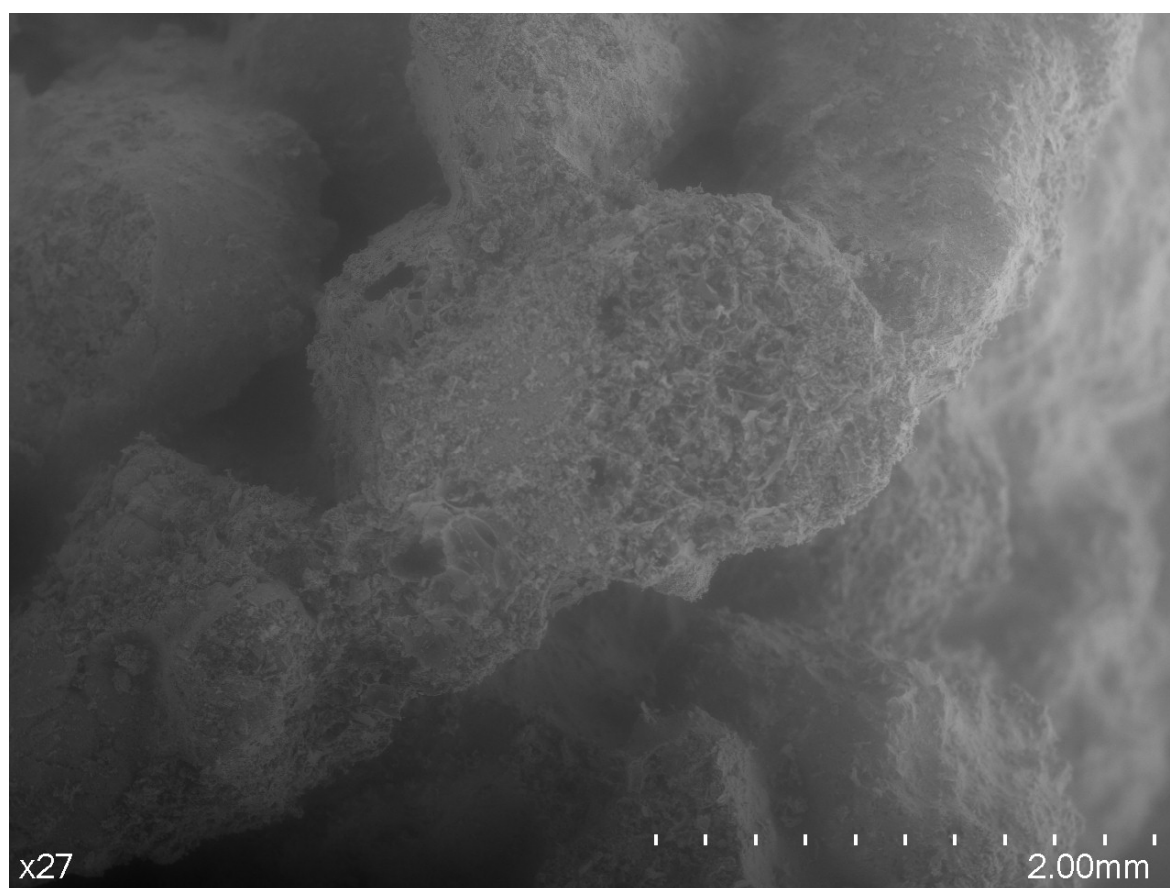


Figure S22. M-SG1—SEM image of expanded perlite and cement interface at M-SG.

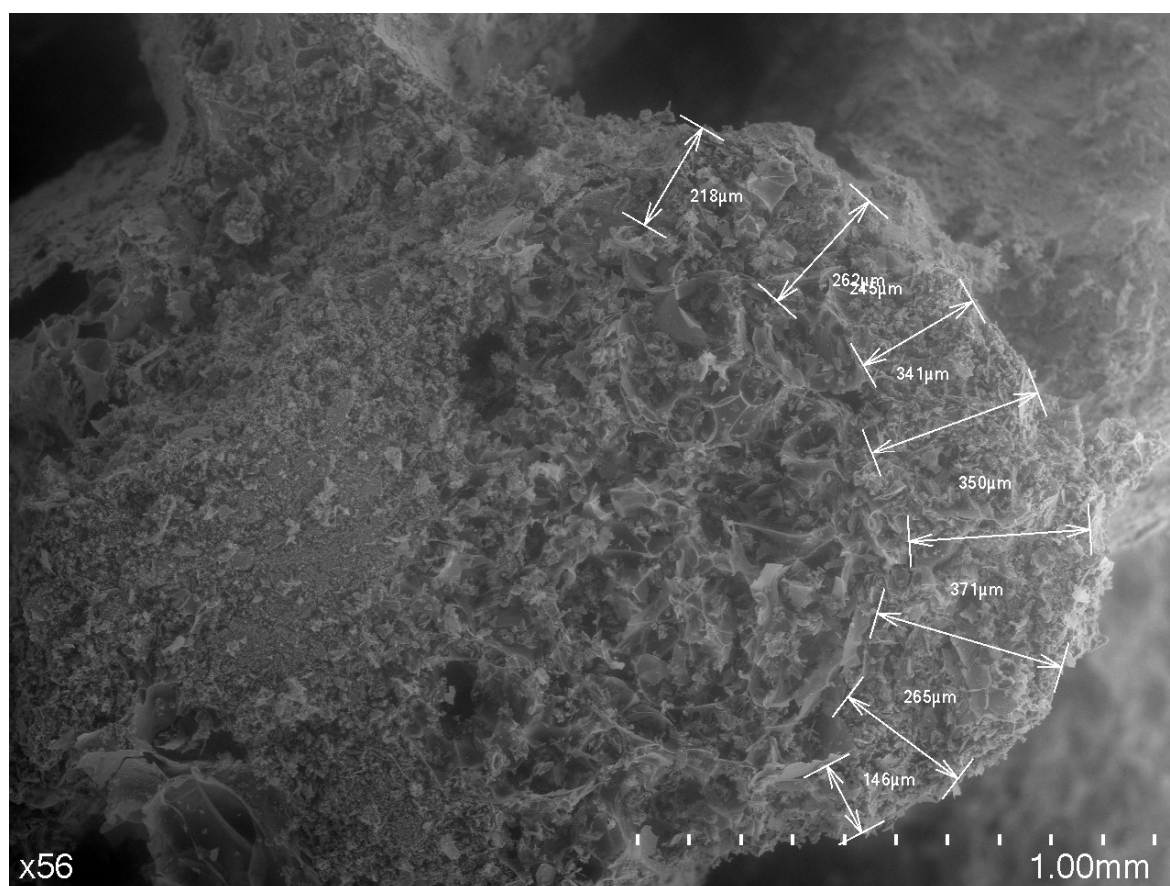


Figure S23. M-SG2—SEM image of expanded perlite and cement interface at M-SG.

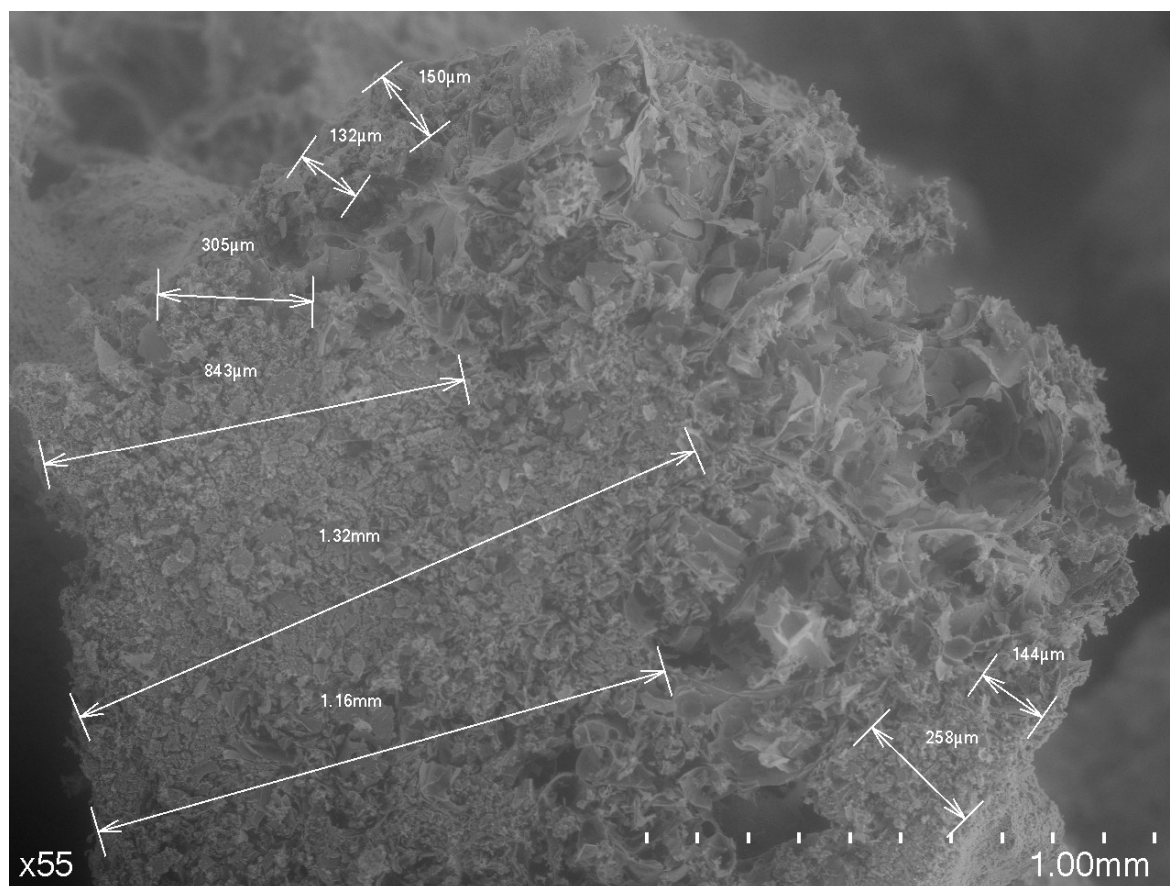


Figure S24. M-SG3—SEM image of expanded perlite and cement interface at M-SG.

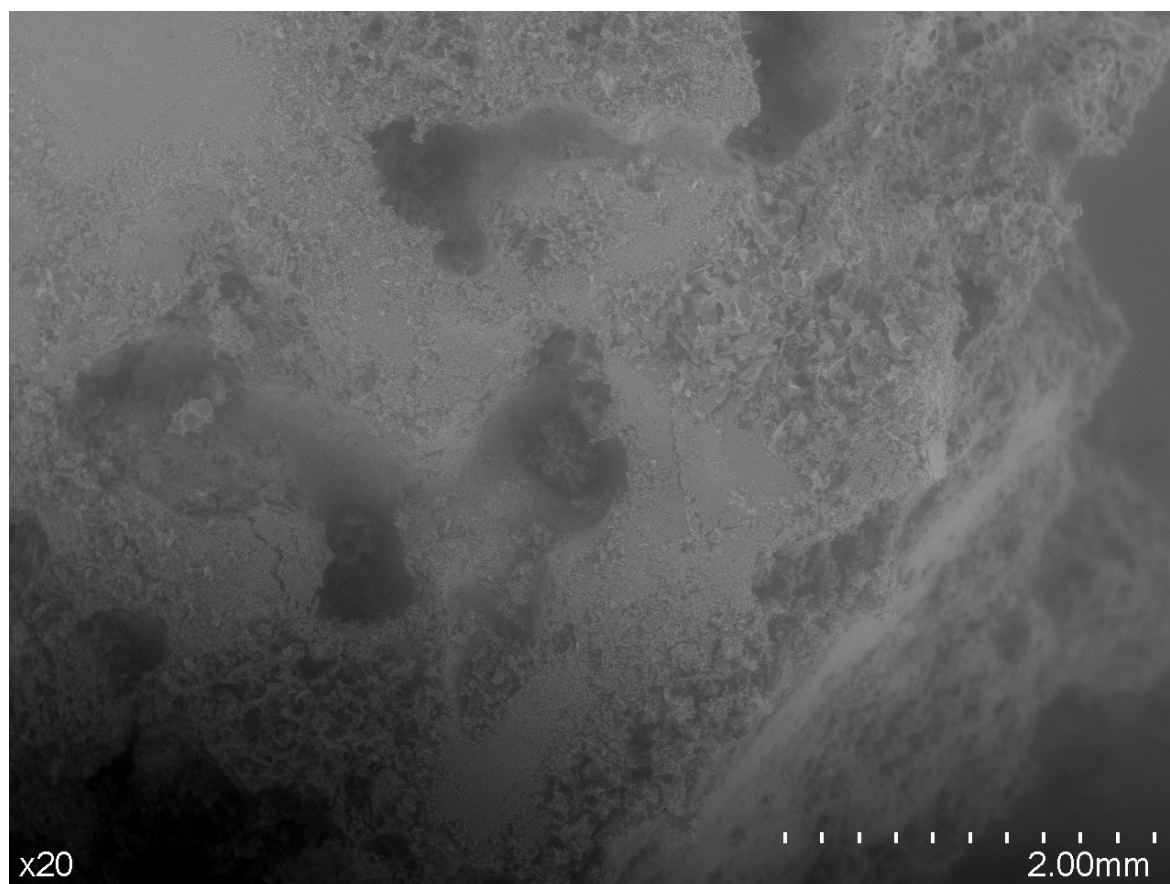


Figure S25. F-SG1—SEM image of expanded perlite and cement interface at F-SG.

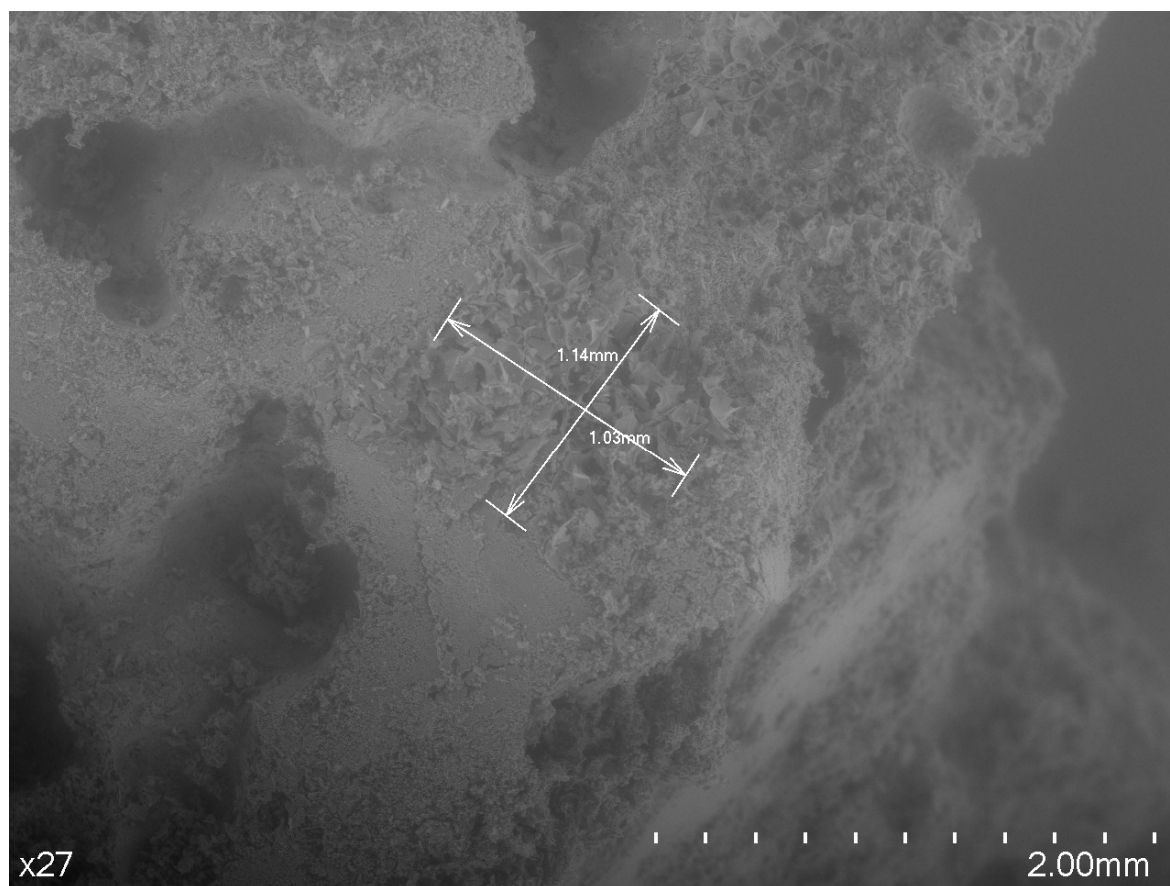


Figure S26. F-SG2—SEM image of expanded perlite and cement interface at F-SG.

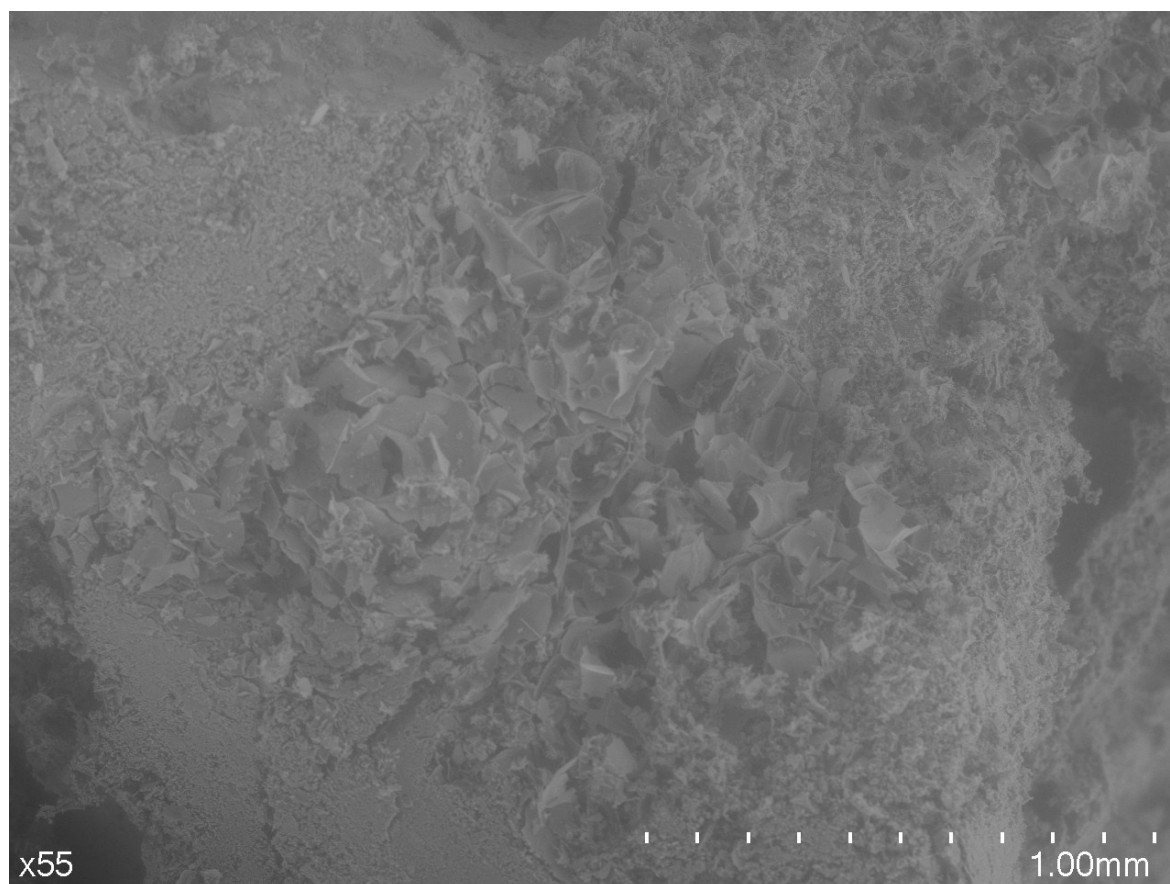


Figure S27. F-SG3—SEM image of expanded perlite and cement interface at F-SG.