

Supplementary Materials

Reconstruction of Hydraulic Fractures Using Passive Ultrasonic Travel-Time Tomography

Wei Zhu, Xu Chang, Yibo Wang, Hongyu Zhai and Zhenxing Yao

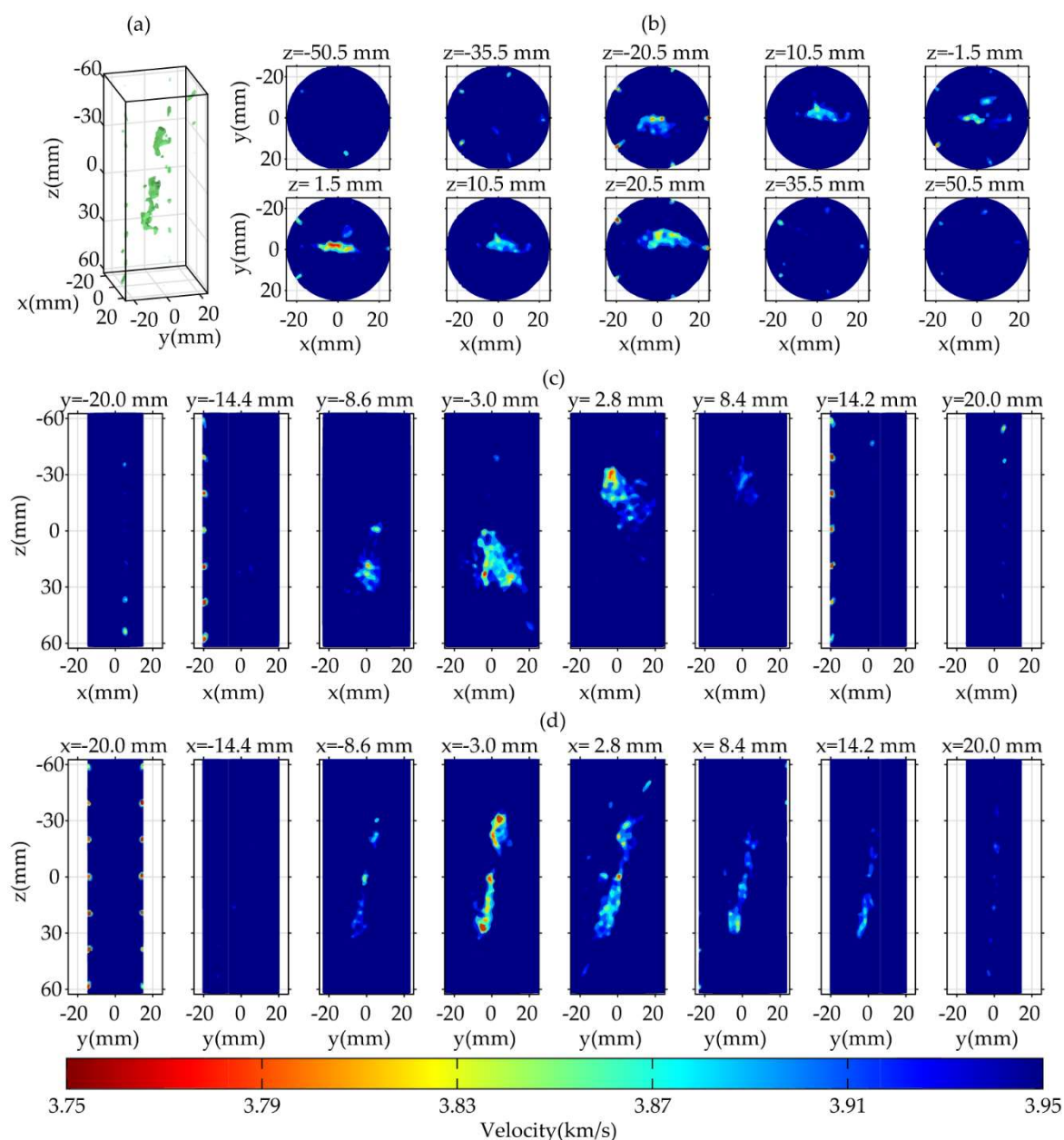


Figure S1. Tomographic images of Tikh under sparse ray coverage case (RNL=0.1%). (a) the 3D segmented image; (b) the transverse-view profile; (c) the coronal-view profile; and (d) the sagittal-view profile. The caption of each sub-image in (b–d) represents the profile position.

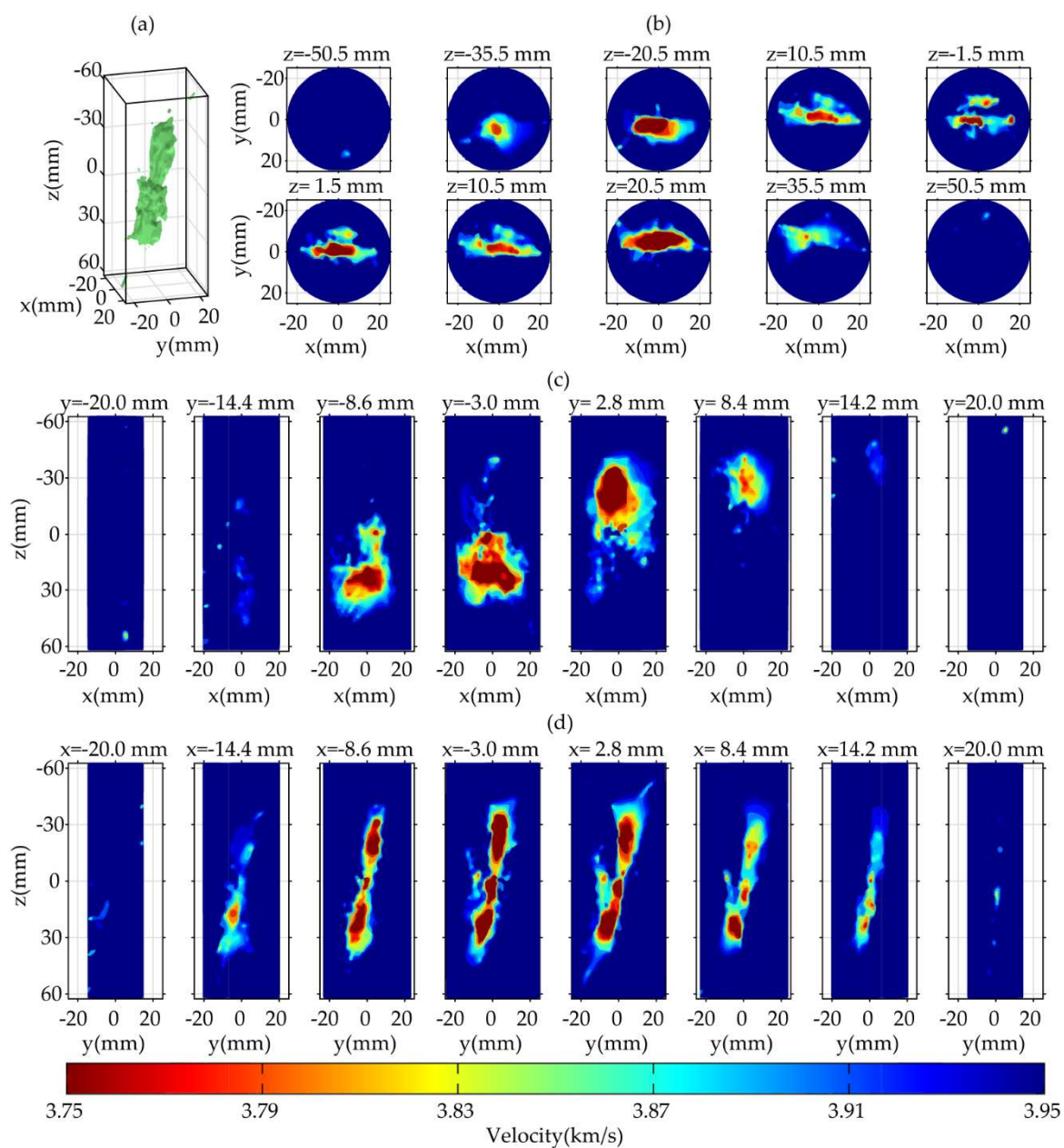


Figure S2. Tomographic images of TVR under sparse ray-coverage (RNL=0.1%). (a) the 3D segmented image; (b) the transverse-view profile; (c) the coronal-view profile; and (d) the sagittal-view profile. The caption of each sub-image in (b–d) represents the profile position.

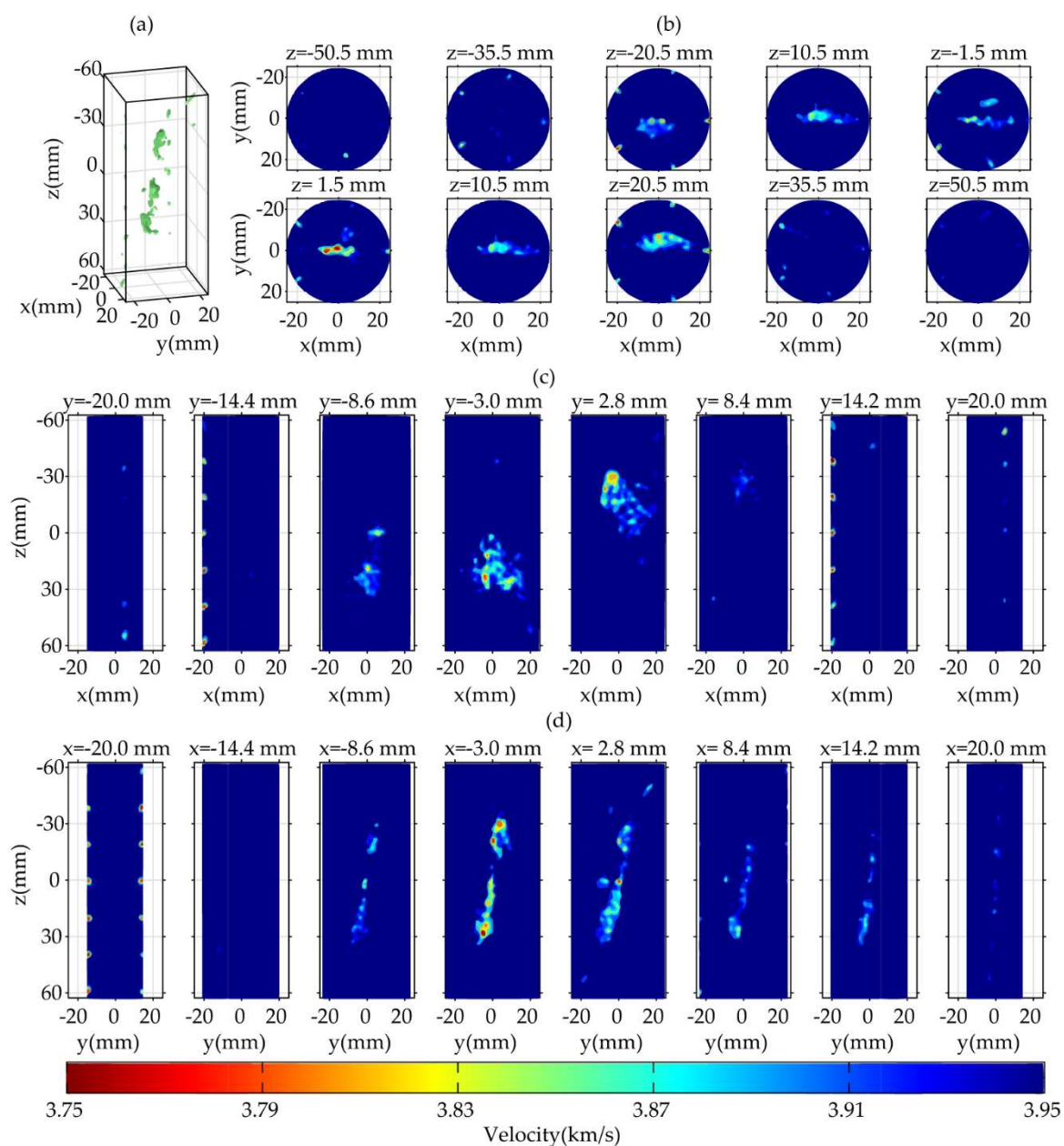


Figure S3. Tomographic images of Tikh under sparse ray coverage case (RNL=0.5%). (a) the 3D segmented image; (b) the transverse-view profile; (c) the coronal-view profile; and (d) the sagittal-view profile. The caption of each sub-image in (b–d) represents the profile position.

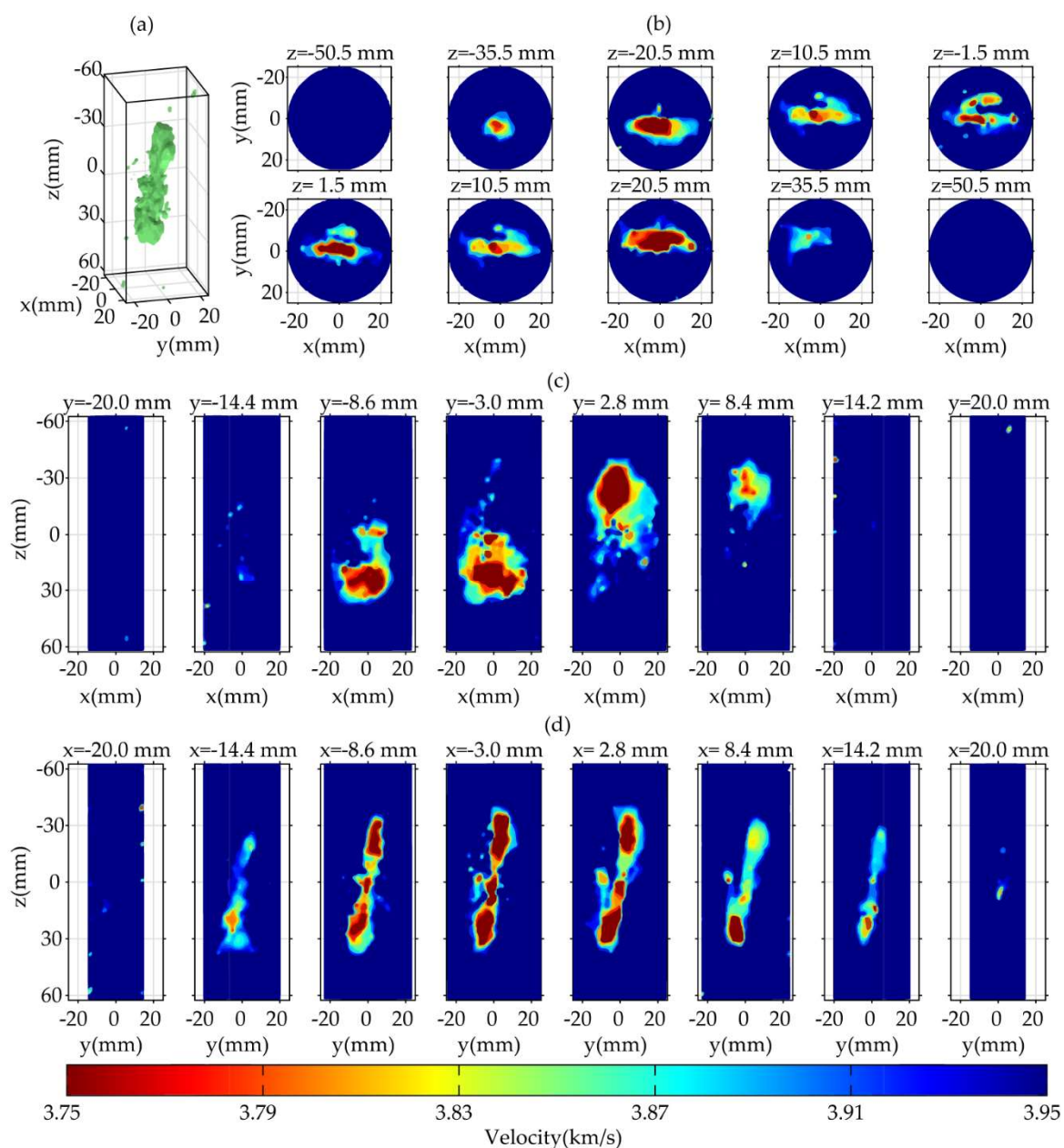


Figure S4. Tomographic images of TVR under sparse ray-coverage (RNL=0.5%). (a) the 3D segmented image; (b) the transverse-view profile; (c) the coronal-view profile; and (d) the sagittal-view profile. The caption of each sub-image in (b–d) represents the profile position.

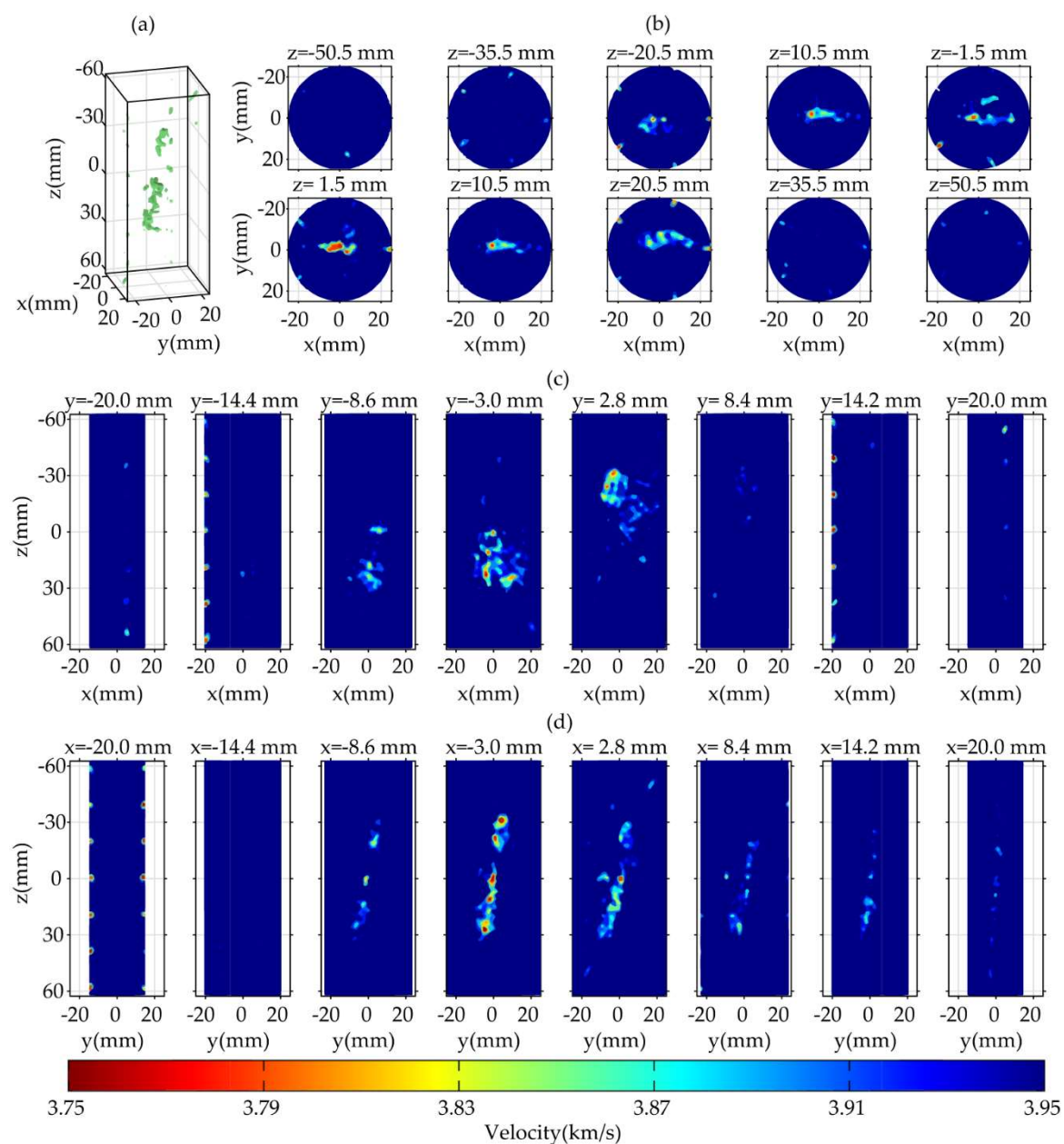


Figure S5. Tomographic images of Tikh under sparse ray coverage case (RNL=1%). (a) the 3D segmented image; (b) the transverse-view profile; (c) the coronal-view profile; and (d) the sagittal-view profile. The caption of each sub-image in (b–d) represents the profile position.

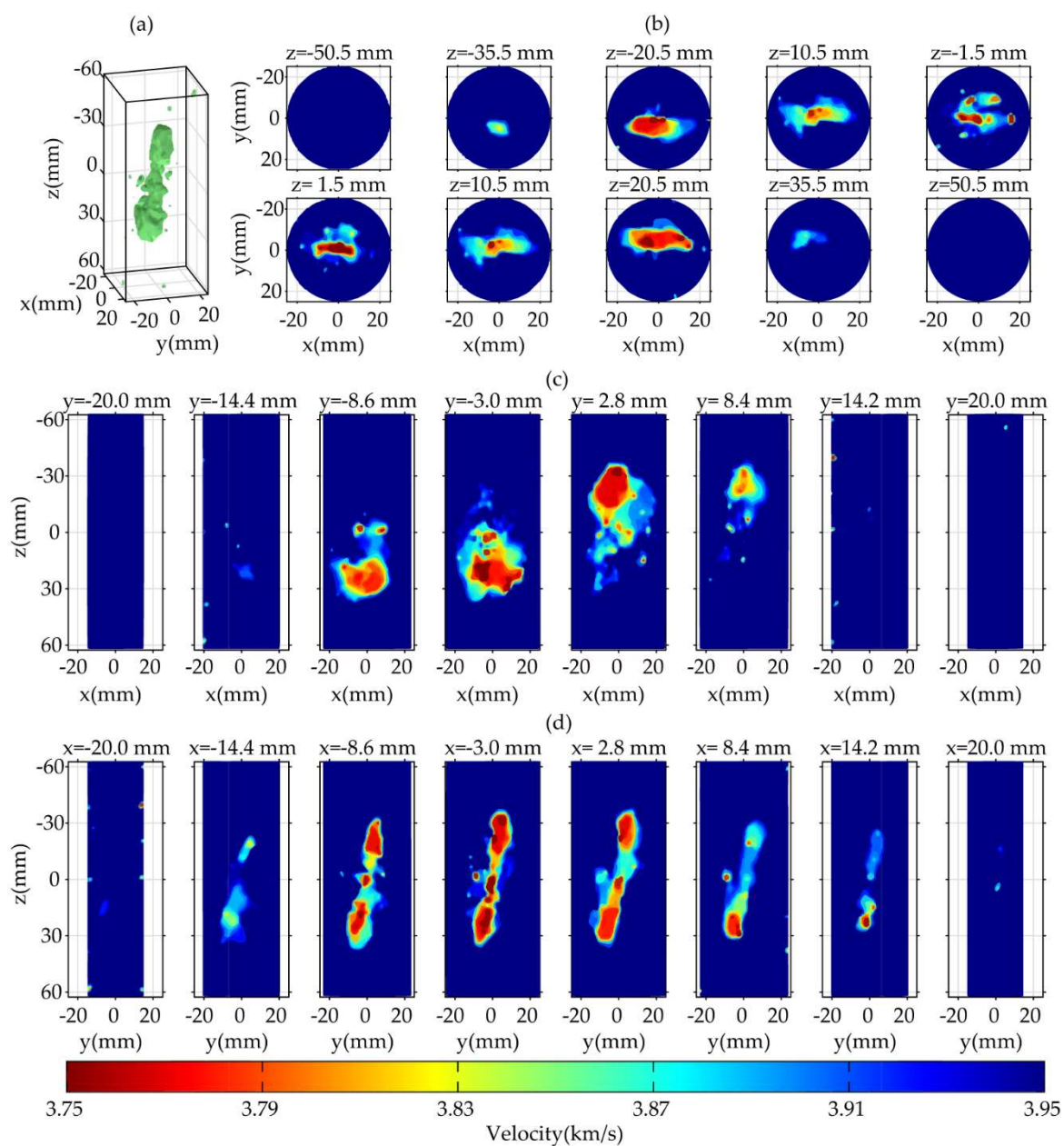


Figure S6. Tomographic images of TVR under sparse ray-coverage (RNL=1%). (a) the 3D segmented image; (b) the transverse-view profile; (c) the coronal-view profile; and (d) the sagittal-view profile. The caption of each sub-image in (b–d) represents the profile position.

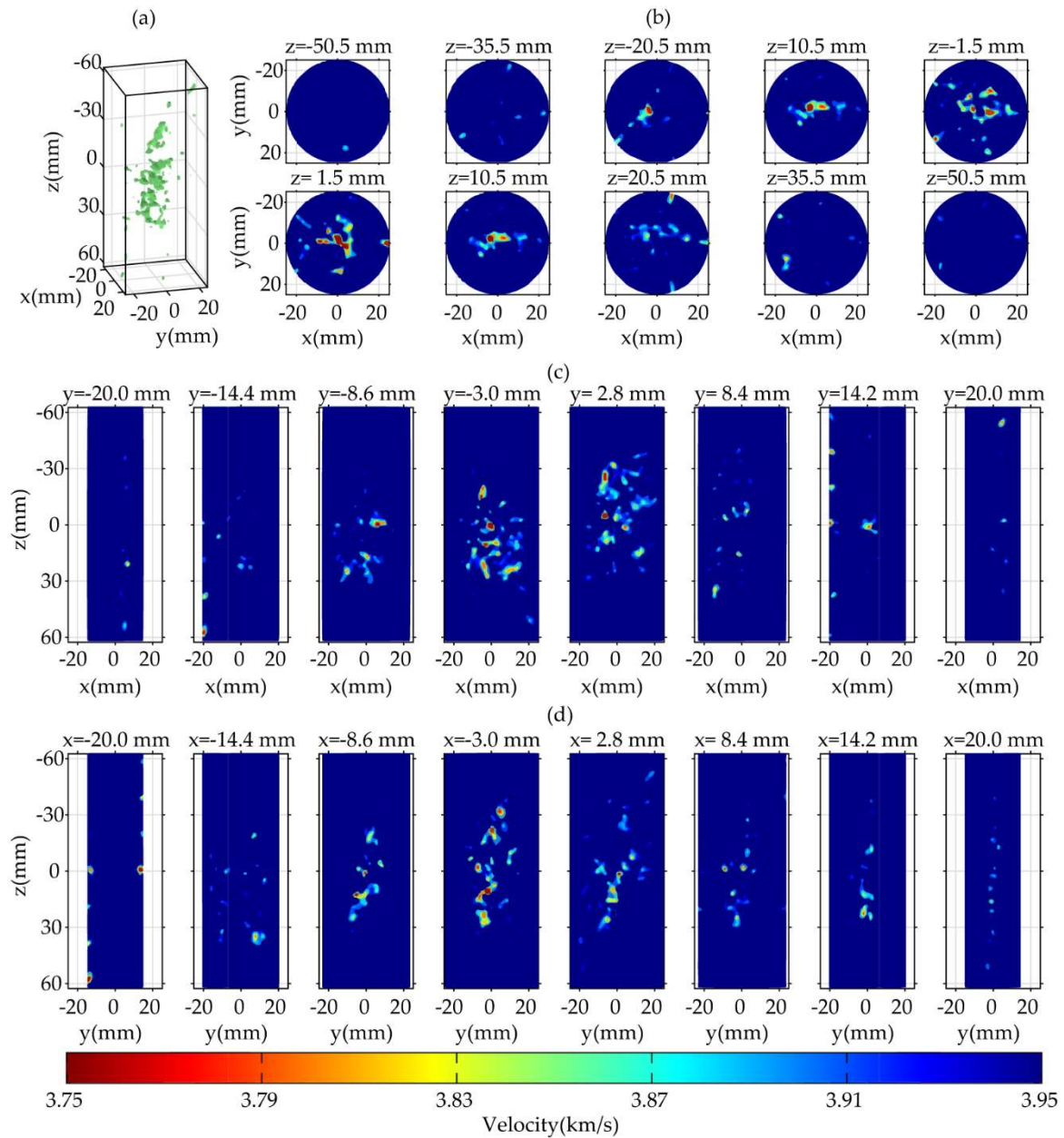


Figure S7. Tomographic images of Tikh under sparse ray coverage case (RNL=3%). (a) the 3D segmented image; (b) the transverse-view profile; (c) the coronal-view profile; and (d) the sagittal-view profile. The caption of each sub-image in (b–d) represents the profile position.

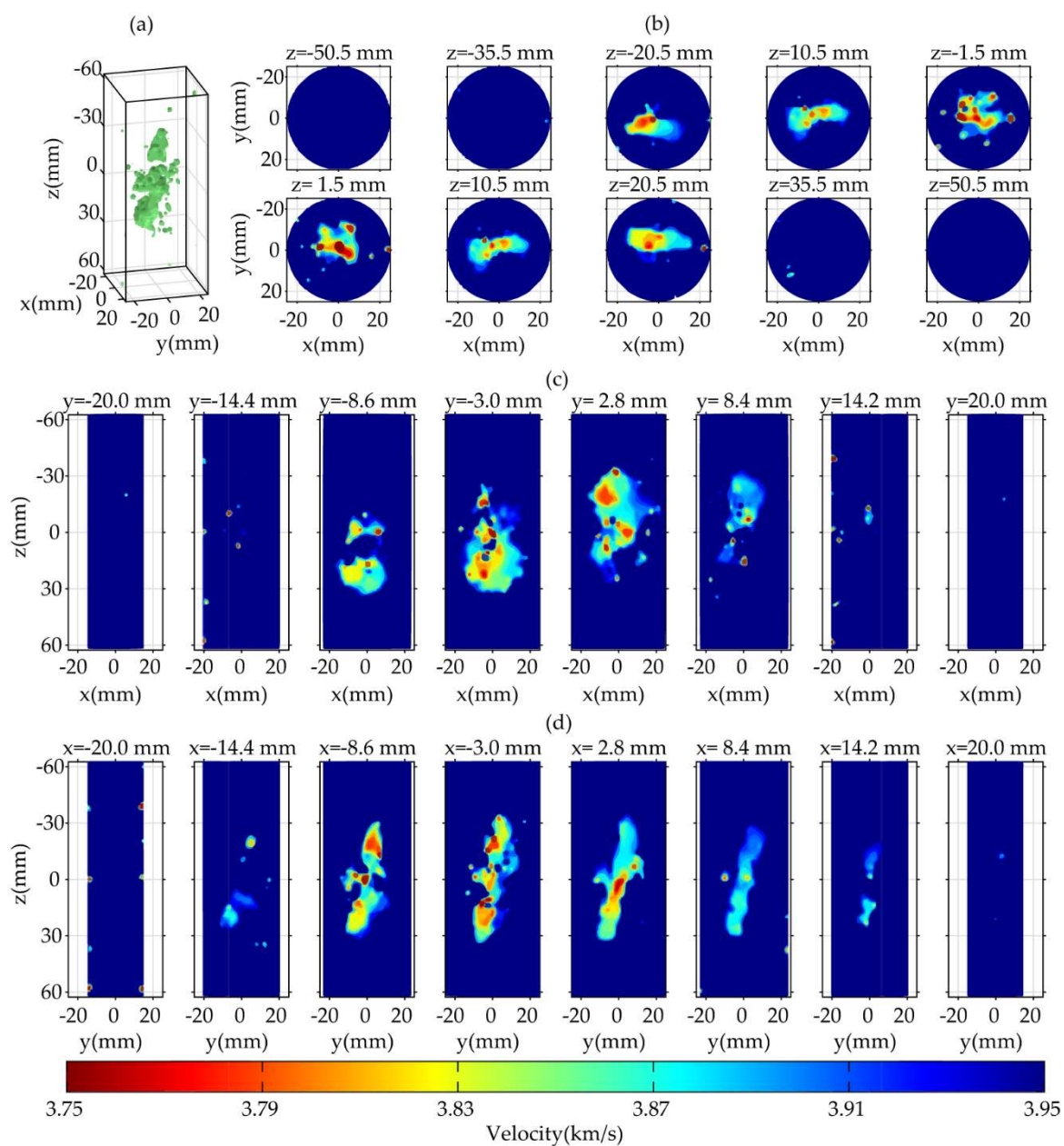


Figure S8. Tomographic images of TVR under sparse ray-coverage (RNL=3%). (a) the 3D segmented image; (b) the transverse-view profile; (c) the coronal-view profile; and (d) the sagittal-view profile. The caption of each sub-image in (b–d) represents the profile position.

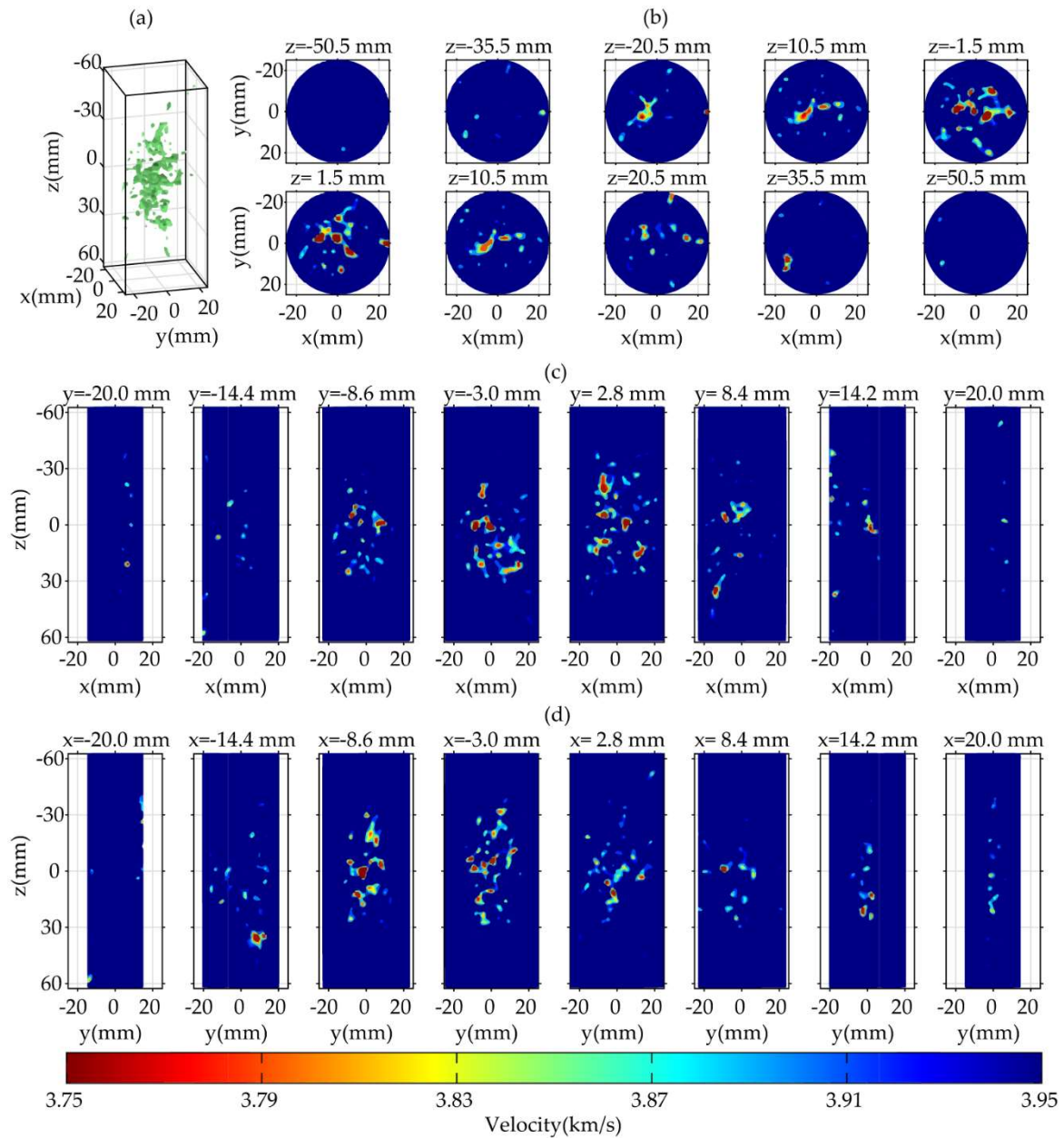


Figure S9. Tomographic images of Tikh under sparse ray coverage case (RNL=5%). (a) the 3D segmented image; (b) the transverse-view profile; (c) the coronal-view profile; and (d) the sagittal-view profile. The caption of each sub-image in (b–d) represents the profile position.

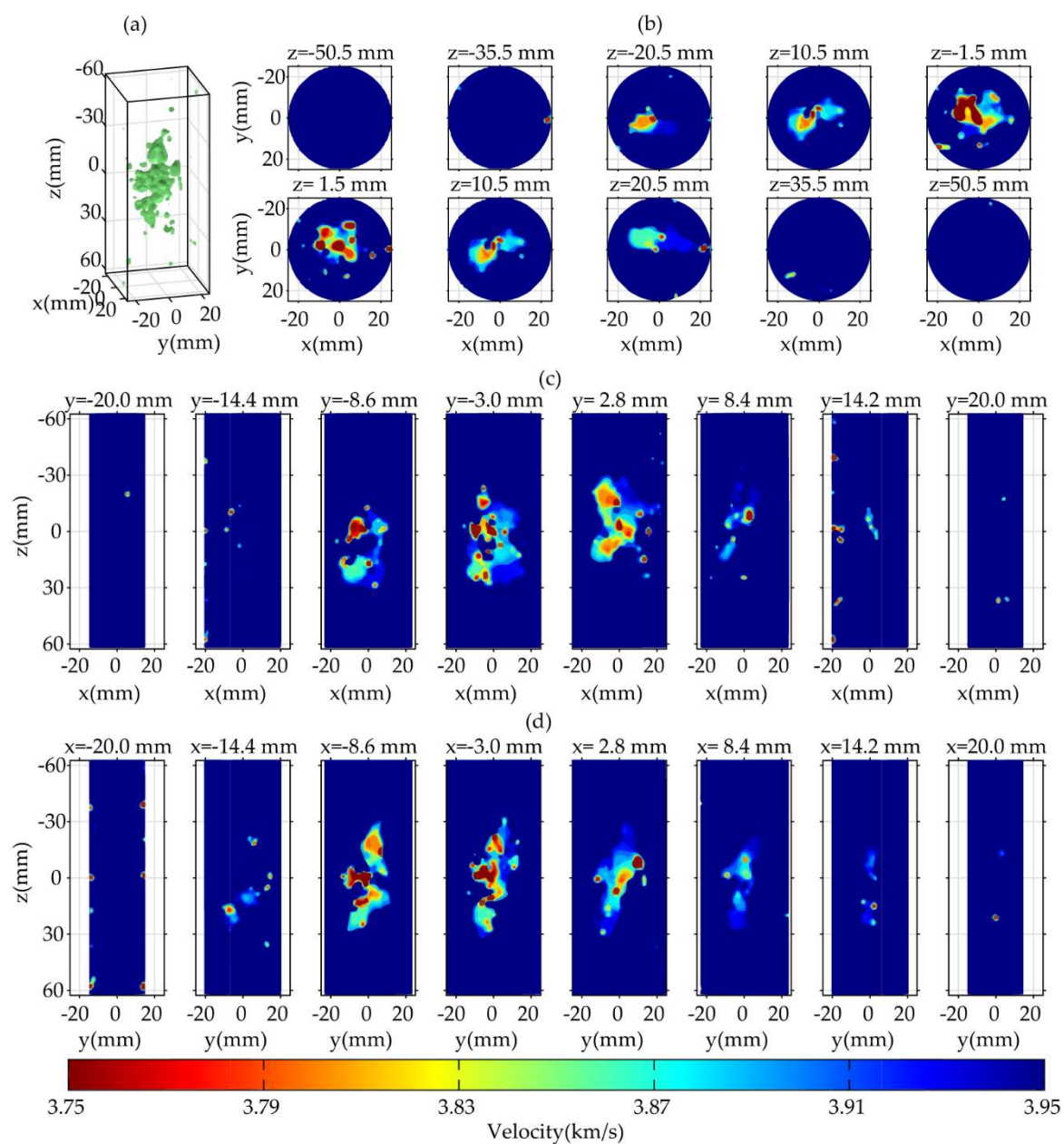


Figure S10. Tomographic images of TVR under sparse ray-coverage (RNL=5%). (a) the 3D segmented image; (b) the transverse-view profile; (c) the coronal-view profile; and (d) the sagittal-view profile. The caption of each sub-image in (b–d) represents the profile position.