

Supplementary Materials

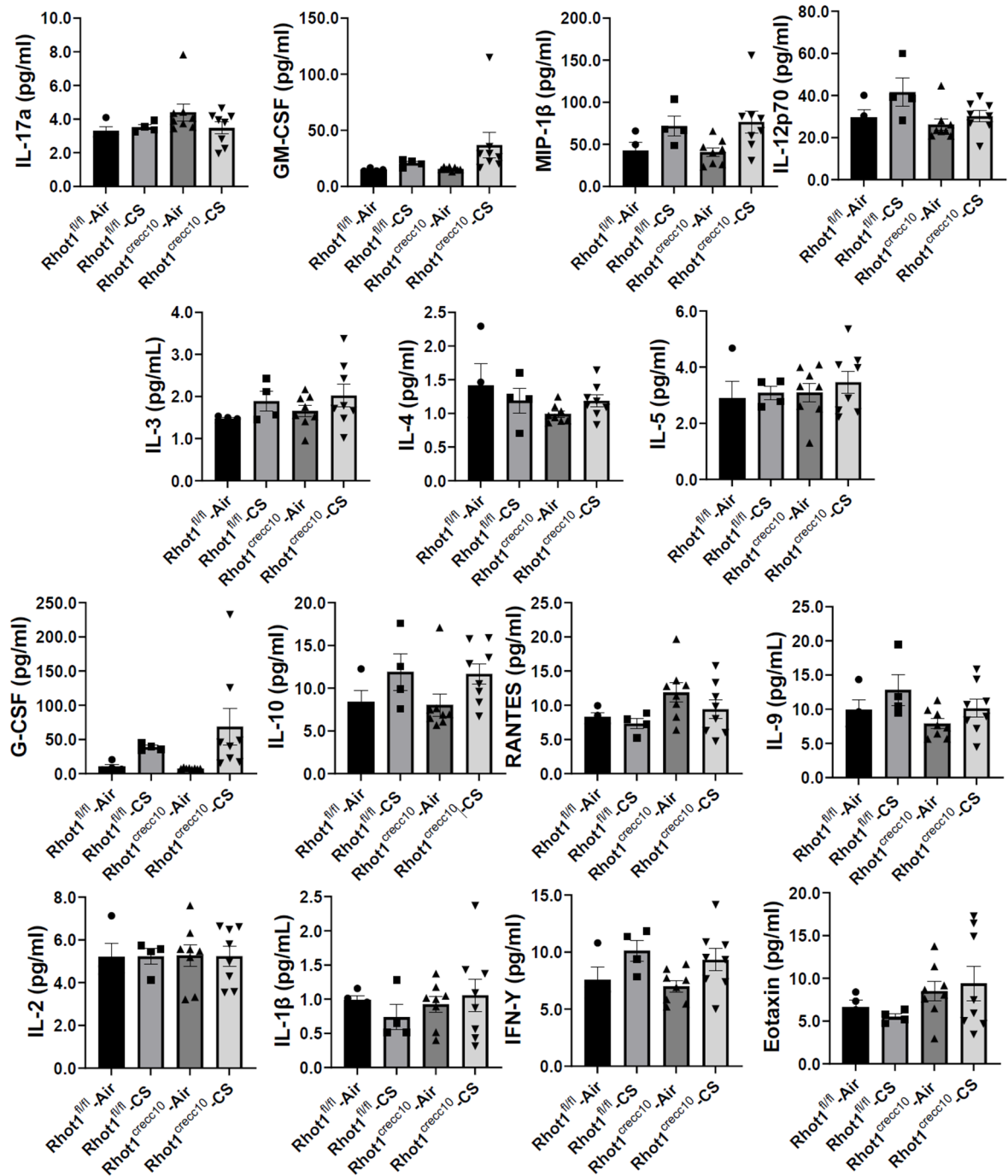


Figure S1. Differential expression of cytokines in epithelial cell-specific Rhot1 deleted and WT mice: Rhot1^{fl/fl} (WT) and Rhot1^{fl/fl} CreCC10^{+/-} (Rhot1 flp CreCC10^{+/-} and Rhot1 flp CreCC10^{+/-}) mice were exposed to room air and CS (mainstream) for 3 days (acute exposure). Expression levels of pro-inflammatory and inflammatory mediators in BAL fluid room air and CS-exposed mice for 3 days was determined using Bio-Plex Pro 23-plex cytokine assay. Data are shown as mean ± SEM (n = 5 to 8 per group).

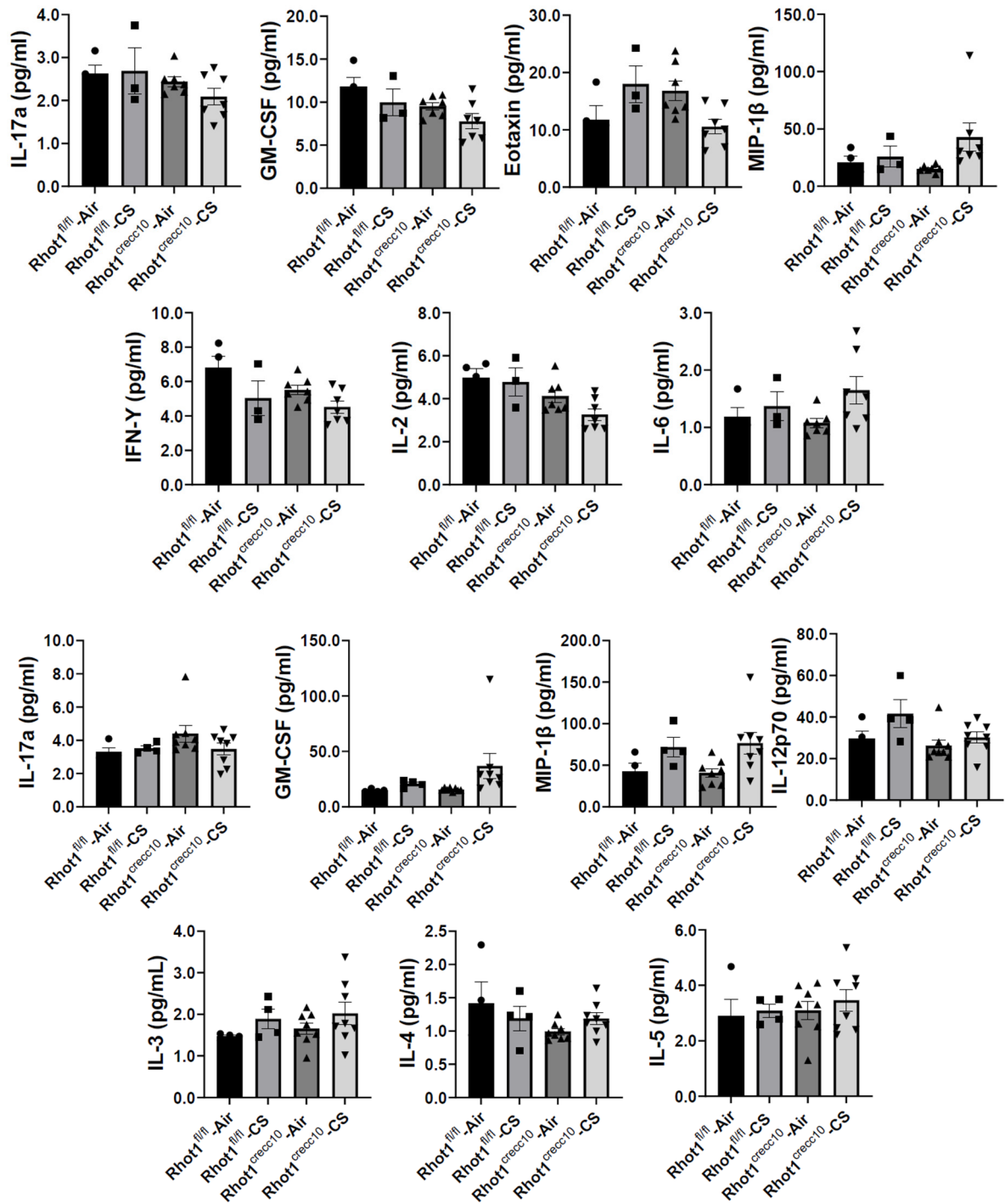


Figure S2. Differential expression of cytokines in epithelial cell-specific Rhot1 deleted and WT mice: Rhot1^{fl/fl} (WT) and Rhot1^{CreCC10} (Rhot1 flp CreCC10^{-/-} and Rhot1 flp CreCC10^{+/-}) mice were exposed to room air and CS (mainstream) for 4 months (sub-chronic exposure). Expression levels of pro-inflammatory and inflammatory mediators in BAL fluid room air and CS-exposed mice for 4 months as determined using Bio-Plex Pro 23-plex cytokine assay. Data are shown as mean \pm SEM (n = 3 to 7 per group).