

# Supplementary Materials: Prognostic Factors of Survival for High-Grade Neuroendocrine Neoplasia of the Bladder: A SEER Database Analysis

Veronica Mollica, Francesco Massari, Elisa Andrini, Matteo Rosellini, Andrea Marchetti, Giacomo Nuvola, Elisa Tassinari, Giuseppe Lamberti and Davide Campana

**Table S1.** Patients with no lymph node involvement nor metastatic lesions (N0M0) characteristics (total number of patients = 510).

<b>Age</b>	≤72 years	43.7% ( <i>n</i> = 223)
	>72 years	56.3% ( <i>n</i> = 287)
<b>Sex</b>	Female	19.8% ( <i>n</i> = 101)
	Male	80.2% ( <i>n</i> = 409)
<b>Histology</b>	SCNEC	75.3% ( <i>n</i> = 384)
	NEC	13.5% ( <i>n</i> = 69)
	MiNEN	7.8% ( <i>n</i> = 40)
	LCNEC	3.3% ( <i>n</i> = 17)
<b>Type of surgery</b>	Minor	80% ( <i>n</i> = 391)
	Major	20% ( <i>n</i> = 98)
	NA	23.4% ( <i>n</i> = 265)
<b>Status at 12 months</b>	Dead	40.3% ( <i>n</i> = 190)
	Alive	59.7% ( <i>n</i> = 282)

Abbreviations: N, number of patients. NA, not available. SCNEC, small cell neuroendocrine carcinoma. LCNEC, large cell neuroendocrine carcinoma. MiNEN, mixed neuroendocrine non-neuroendocrine neoplasia. NEC, neuroendocrine carcinoma.

**Table S2.** Univariate and multivariate Cox proportional hazard models for the risk of death. Significant p-values are highlighted in bold.

	<b>Univariate</b>			<b>Multivariate</b>		
	<b>HR</b>	<b>CI95%</b>	<b><i>p</i></b>	<b>HR</b>	<b>CI95%</b>	<b><i>p</i></b>
Female sex	1.03	0.80-1.35	0.818	-	-	-
Age >72 years	1.96	1.57-2.46	<0.001	1.80	1.32-2.47	<0.001
Diameter >44.5 mm	1.64	1.23-2.17	<0.001	1.61	1.21-2.15	0.001
Minor surgery	2.32	1.68-3.19	<0.001	1.58	1.07-2.35	0.021

Abbreviations: HR, hazard ratio; 95%CI, 95% confidence interval.

**Table S3.** Patients with lymph node involvement and no metastatic lesions (N+M0) characteristics (total number of patients = 104).

<b>Age</b>	≤72 years	49.0% ( <i>n</i> = 51)
	>72 years	51.0% ( <i>n</i> = 53)
<b>Sex</b>	Female	18.3% ( <i>n</i> = 19)
	Male	81.7% ( <i>n</i> = 85)
<b>Histology</b>	SCNEC	81.7% ( <i>n</i> = 85)
	NEC	6.7% ( <i>n</i> = 7)
	MiNEN	10.6% ( <i>n</i> = 11)
	LCNEC	1% ( <i>n</i> = 1)
<b>Type of surgery</b>	Minor	52.6% ( <i>n</i> = 51)
	Major	47.4% ( <i>n</i> = 46)
	Dead	51.1% ( <i>n</i> = 47)

<b>Status at 12 months</b>	Alive	48.9% ( <i>n</i> = 45)
----------------------------	-------	------------------------

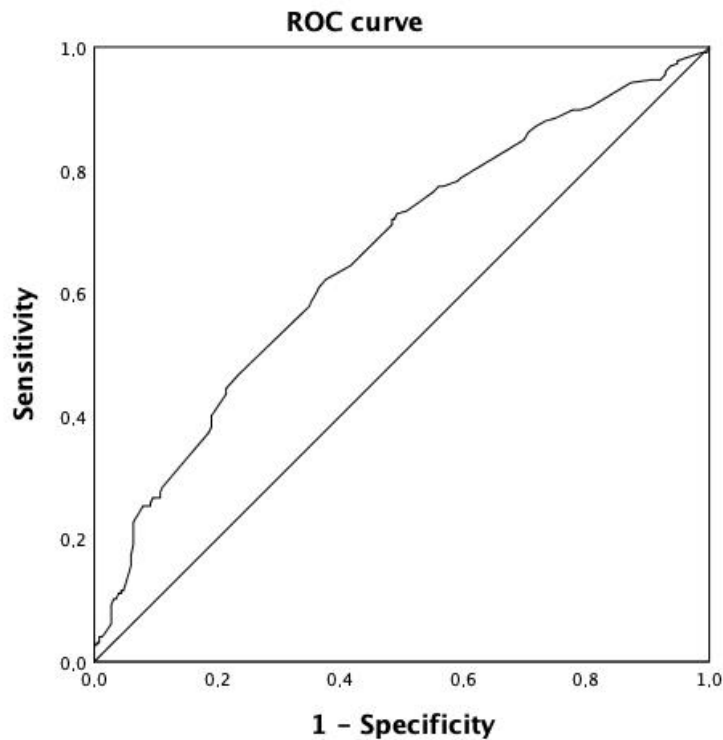
Abbreviations: SCNEC, small cell neuroendocrine carcinoma. LCNEC, large cell neuroendocrine carcinoma. MiNEN, mixed neuroendocrine non-neuroendocrine neoplasia. NEC, neuroendocrine carcinoma.

**Table S4.** Univariate and multivariate Cox proportional hazard models for the risk of death. Significant p-values are highlighted in bold.

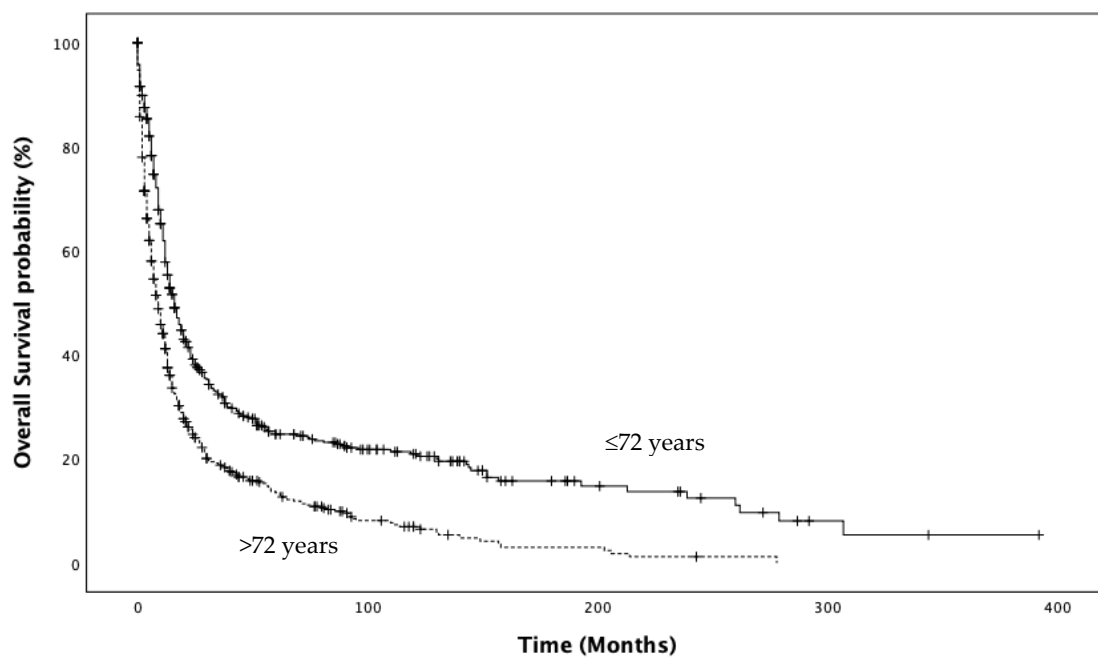
	<i>Univariate</i>			<i>Multivariate</i>		
	HR	CI 95%	<i>p</i>	HR	CI 95%	<i>p</i>
Female sex	1.05	0.58-1.90	0.875			-
Age >72 years	1.66	1.07-2.56	0.022			NSS
Diameter >44.5 mm	1.85	1.05-3.25	<b>0.033</b>	1.88	1.07-3.32	0.029
Surgery performed	0.52	0.24-1.14	0.105			-
Minor surgery	1.38	0.88-2.17	0.159			-

Abbreviations: HR, hazard ratio; 95%CI, 95% confidence interval; NSS, not statistically significant.

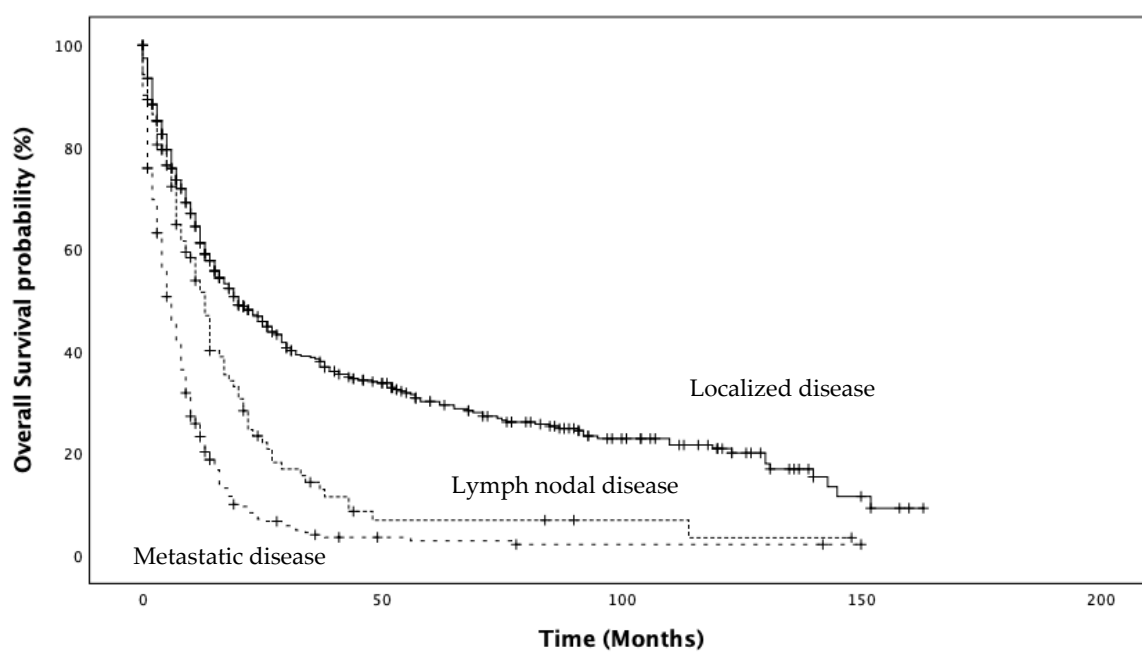
NSS, not statistically significant.



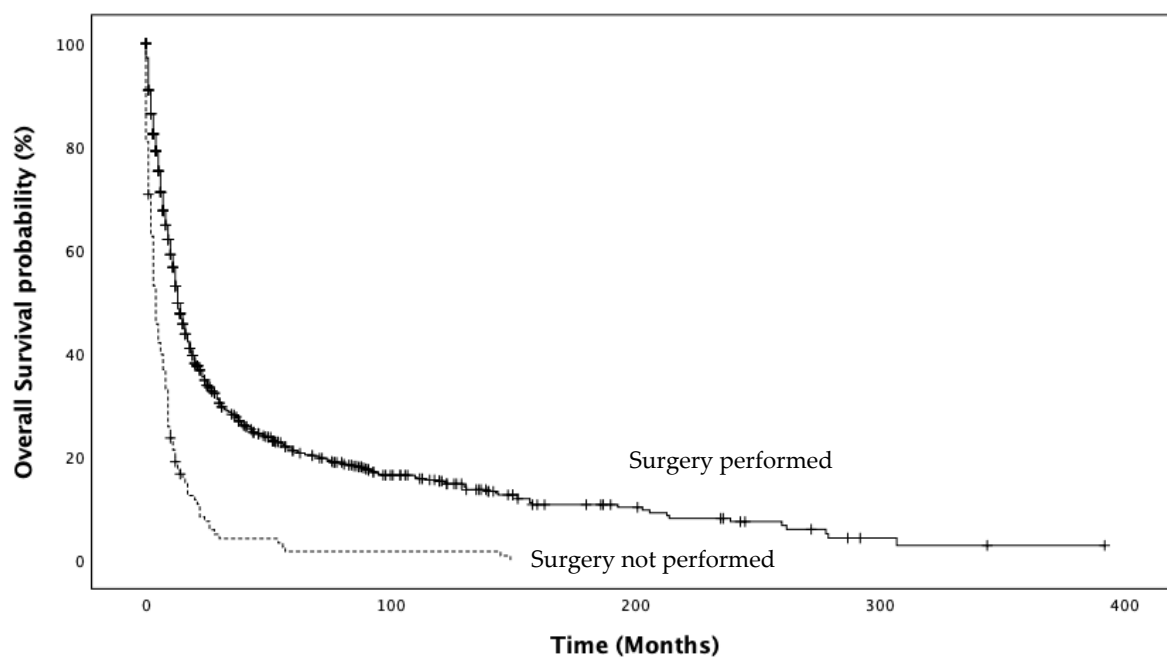
**Figure S1.** Receiving-Operator Characteristics (ROC) curve used to determine the best cut-off of diameter ( $\leq 44.5$  mm or  $>44.5$  mm).



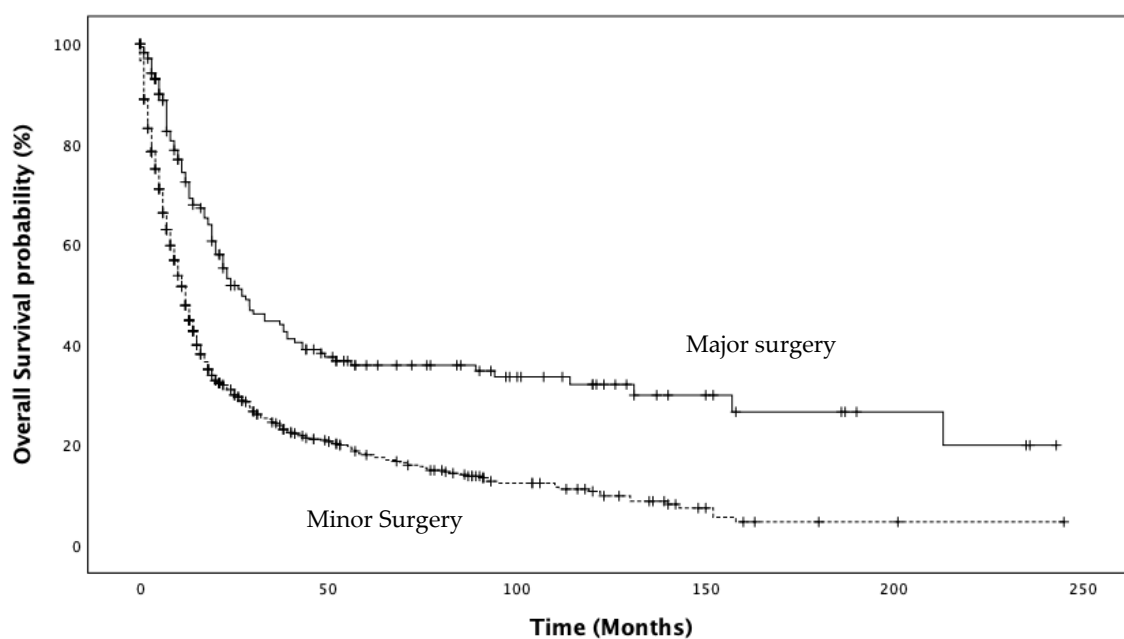
**Figure S2.** Kaplan-Meier estimates of overall survival according to age (72 or  $>72$  years old).



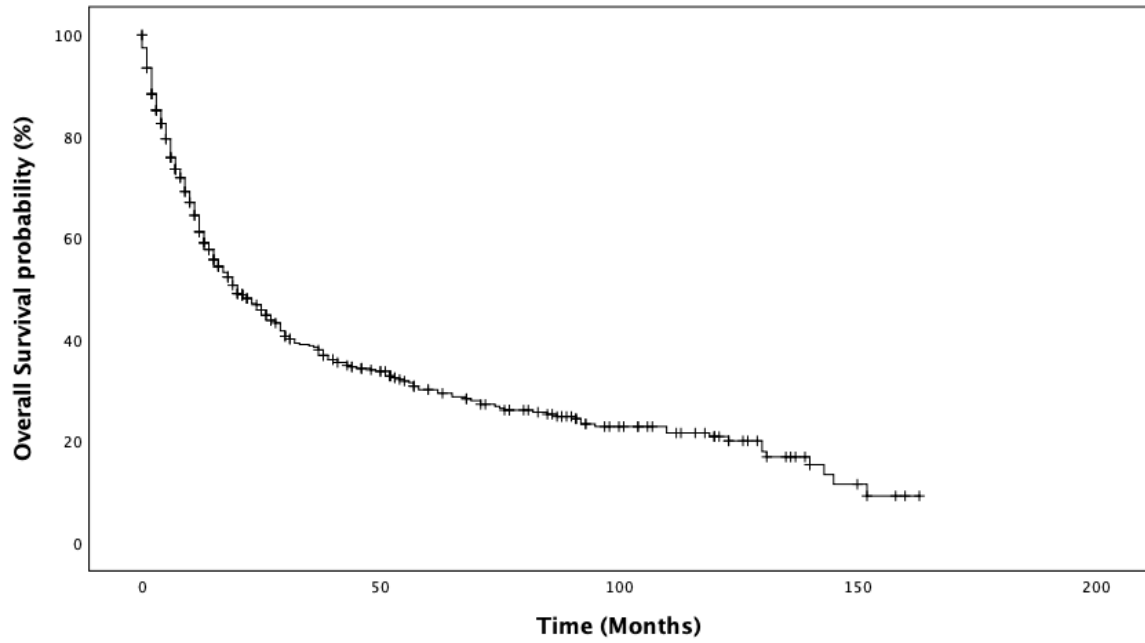
**Figure S3.** Kaplan-Meier estimates of overall survival according to stage (localized, lymph node or distant metastases).



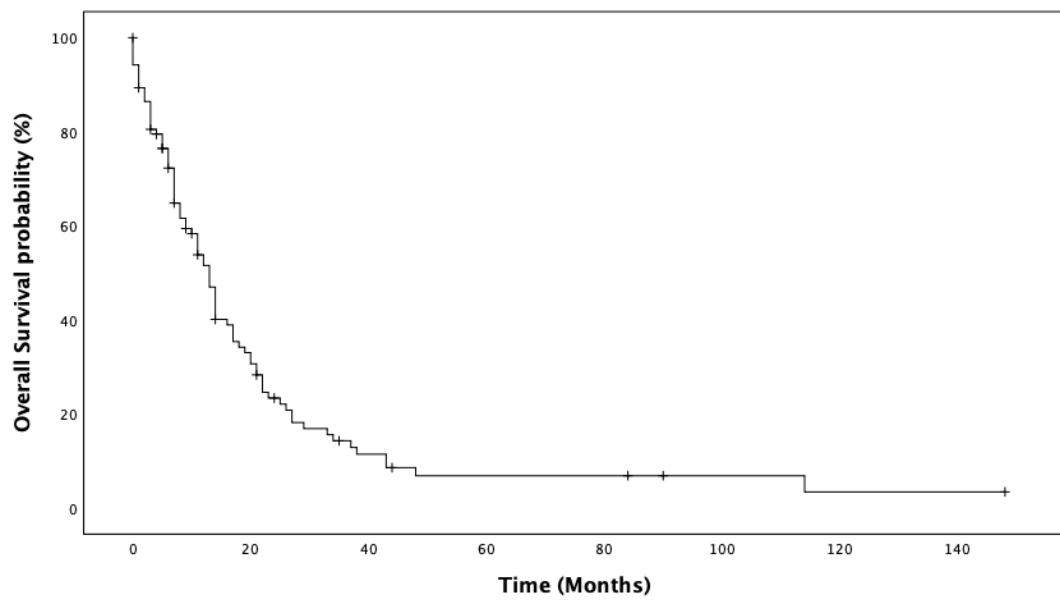
**Figure S4.** Kaplan-Meier estimates of overall survival according to surgery performed or not.



**Figure S5.** Kaplan-Meier estimates of overall survival according to extension of surgery (major or minor).



**Figure S6.** Kaplan-Meier estimates of overall survival of N0M0 patients.



**Figure S7.** Kaplan-Meier estimates of overall survival of N+M0 patients.