

Supplements

Table S1. Patients' characteristics for male population only.

Variable n = 108	Median	Range
Age	64	29-83
Weight	84 kg	55-118 kg
BMI	25.8 kg/m ²	16.5 – 39.4 kg/m ²
	Frequency	Percentage
Sex		
Males	108	100%
Localisation		
Oesophagus	65	60.2%
Stomach (incl. AEG III)	43	39.8%
Histology		
Adenocarcinoma	108	100%
Laurén Histology		
Intestinal Type	52	48%
Diffuse Type	28	25.9%
Mixed Type	9	8.3%
Not specified	19	17.6%
WHO-Histology		
Papillary	5	4.6%
Mucinous	6	5.6%
Tubular	24	22.2%
Signet Ring Cell	27	25%
Undifferentiated	8	7.4%
Not specified	38	35.2%

Table S2. Characteristics of neoadjuvant and adjuvant chemotherapy for male population only. Sum of percentages could be ≠100% because of rounding error.

Chemotherapy performed	Frequency	Percentage
Neoadjuvant	128	100%
Adjuvant	70	64.8%
Nr. of cycles (neoadjuvant)		
≤2	8	7.4%
3-4	98	90.7%
≥5	2	1.9%
Nr. of cycles (adjuvant)		
none	38	35.2%
≤2	16	14.9%
≥3	54	50%

Table S3. List of the most used chemotherapy regimens, for male population only. Sum of percentages could be ≠100% because of rounding error.

Regimens ¹	Frequency	Percentage
Neoadjuvant (n= 128)		
DCX	47	43.5%
ECF	34	31.5%
FLOT	18	16.7%
FLOT-like	5	4.6%
ECF-like	4	3.7%
Adjuvant (n= 81)		
DCX	35	50%
ECF	16	22.9%
FLOT	9	12.9%
FLOT-Like	6	8.5%
ECF-Like	3	4.3%
Others	1	1.4%

¹ DCX = Docetaxel, Cisplatin, Capecitabin; ECF = Epirubicin, Cisplatin, 5-FU; FLOT = 5-FU, Leukovorin, Oxaliplatin, Docetaxel, FLOT-Like: FLO = 5-FU, Leukovorin, Oxaliplatin; 5-FU ± Trastuzumab ± Pertuzumab; FOLFOX = 5-FU, Leukovorin, Oxaliplatin; ECF-Like: ECX = Epirubicin, Cisplatin, Capecitabin, EOF = Epirubicin, Oxaliplatin, EOX = Epirubicin, Oxaliplatin, Capecitabin; Others: Pembrolizumab.

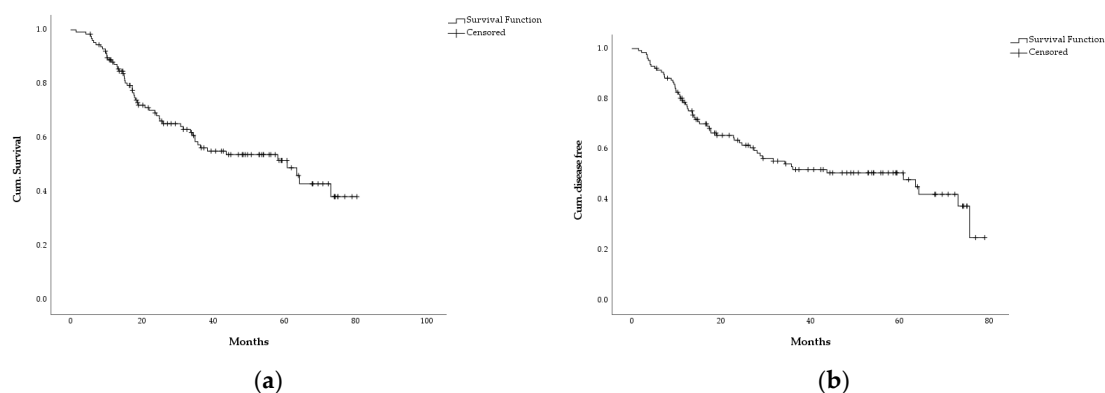


Figure S1. Kaplan-Meier curves in the whole cohort. (a) Overall Survival (n=128); (b) Disease-Free Survival (n=128).

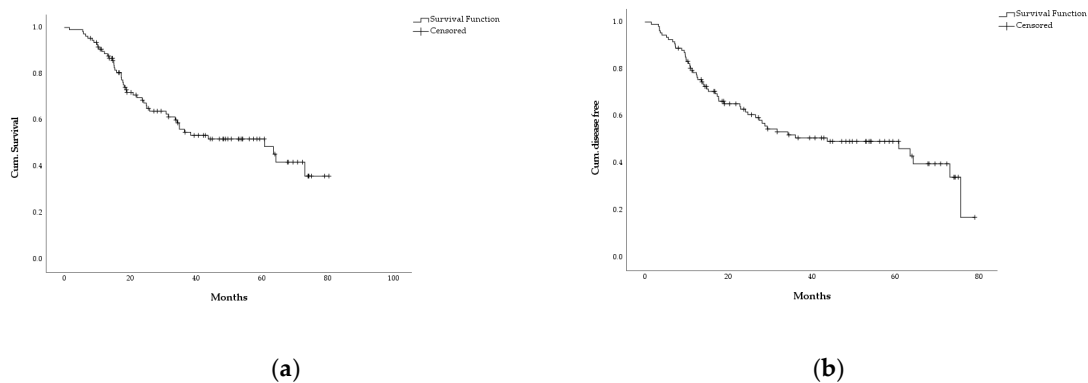


Figure S2. Kaplan-Meier curves for male population only. (a) Overall Survival (n=108; 60.8 months; 95%-CI: 36.7 – 84.9); (b) Disease-Free Survival (n=108; 43.7 months, 95%-CI: 15.4 – 71.9).

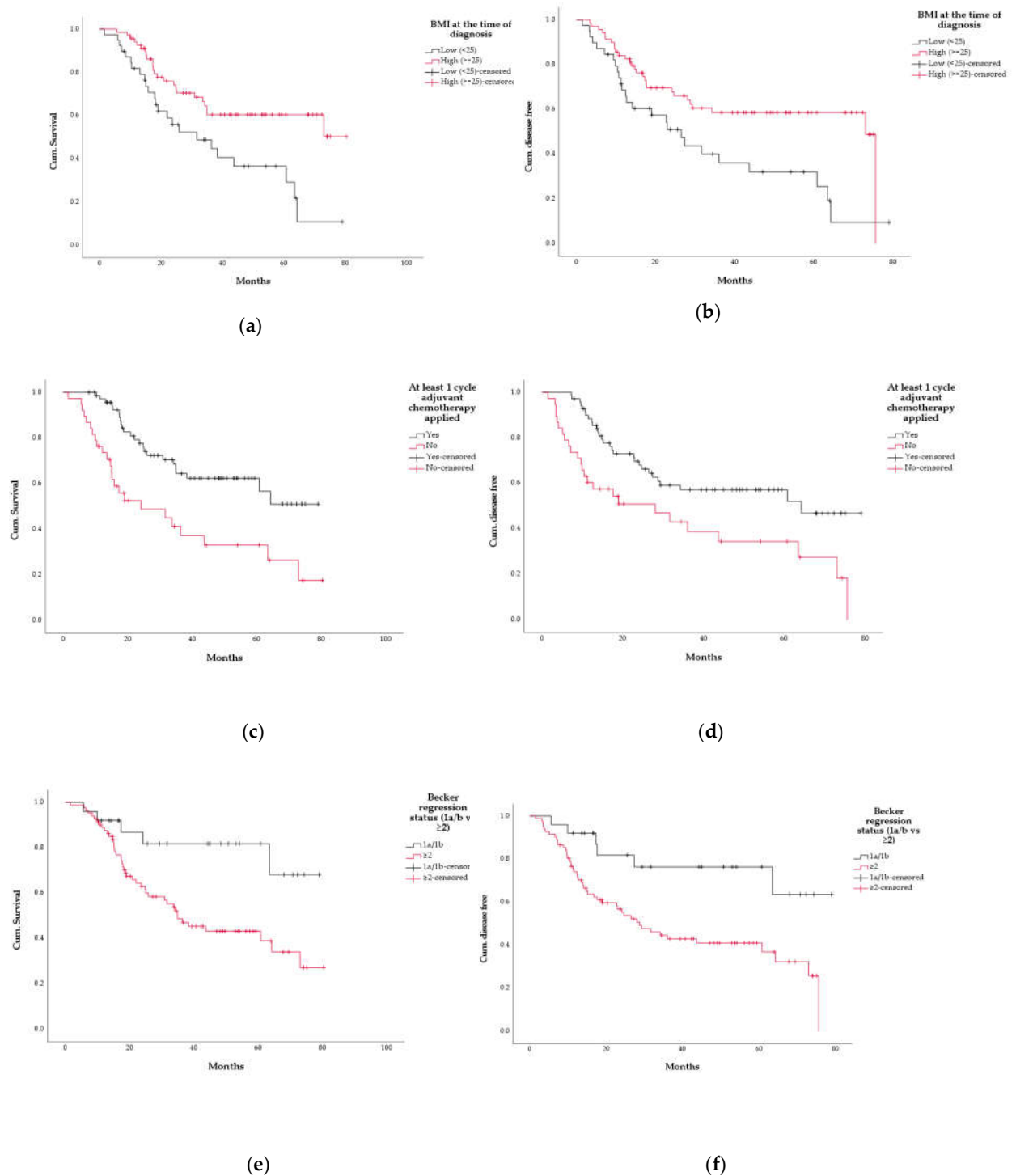


Figure S3. Kaplan-Meier curves for man population only according to different variables, as listed: **(a)** Overall Survival according to BMI (red line: BMI ≥ 25 kg/m²; n= 69; not reached; black line: BMI ≥ 25 kg/m²; n= 39; 31.7 months, 95%-CI: 12 – 51.3; p= 0.005); **(b)** Disease-Free Survival according to BMI (red line: BMI ≥ 25 kg/m², n= 69; 73 months; 95%-CI 58.7 – 87.4; black line: BMI ≥ 25 kg/m², n= 39; 26.5 months; 95%-CI: 16.2 – 36.8; p= 0.006); **(c)** Overall Survival according to application of adjuvant chemotherapy (black line: at least 1 cycle, n= 70; not reached; red line: no adjuvant chemotherapy, n= 38; 24.1 months; 95%-CI: 1.6 – 46.7; p= 0.000); **(d)** Disease-Free Survival according to application of adjuvant chemotherapy (black line:

at least 1 cycle, n= 70; not reached; red line: no adjuvant chemotherapy, n= 38; 11.3 months, 95%-CI: 5.8 – 50.3; p= 0.004); (e) Overall Survival according to Becker regression status, 107 analysable pts (black line: Becker regression status 1a/1b, n= 25; not reached; red line: Becker regression status ≥ 2 , n= 82; 34.9 months, 95%-CI: 23.2 – 46.7; p= 0.01); (f) Disease-Free Survival according to Becker regression status, 107 analysable pts (black line: Becker regression status 1a/1b, n= 25; not reached; red line: Becker regression status ≥ 2 , n= 82; 5.5 months; 95%-CI: 17.9 – 39.6; p= 0.005).

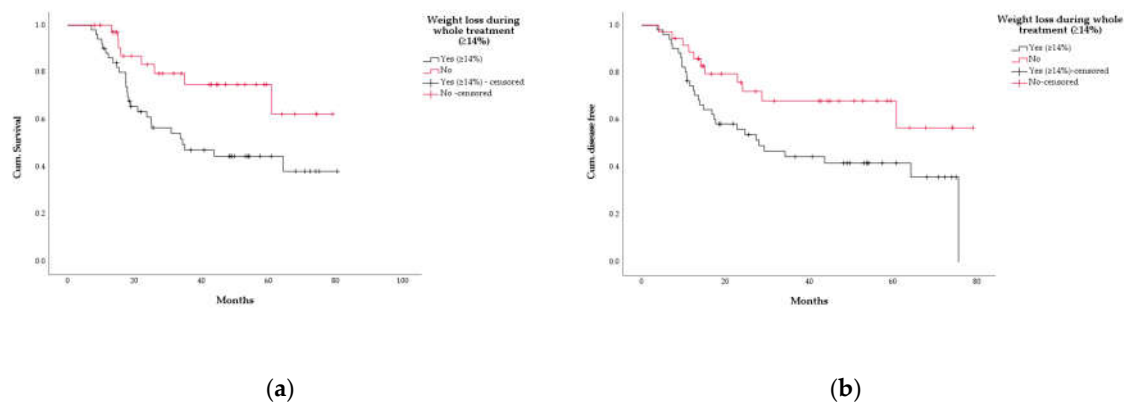


Figure S4. Kaplan-Meier curves for male population only according to weight loss during the whole treatment (threshold: WL $\geq 14\%$, 87 analysable pts). (a) Overall Survival (black line: WL $\geq 14\%$, n= 51; 34.3 months, 95%-CI: 12 – 56.6; red line: WL $< 14\%$, n= 36; not reached; p= 0.017); (b) Disease-Free Survival (black line: WL $\geq 14\%$, n= 51; 28 months; 95%-CI: 14 – 42.1; red line: WL $< 14\%$, n= 36; not reached; p= 0.027).

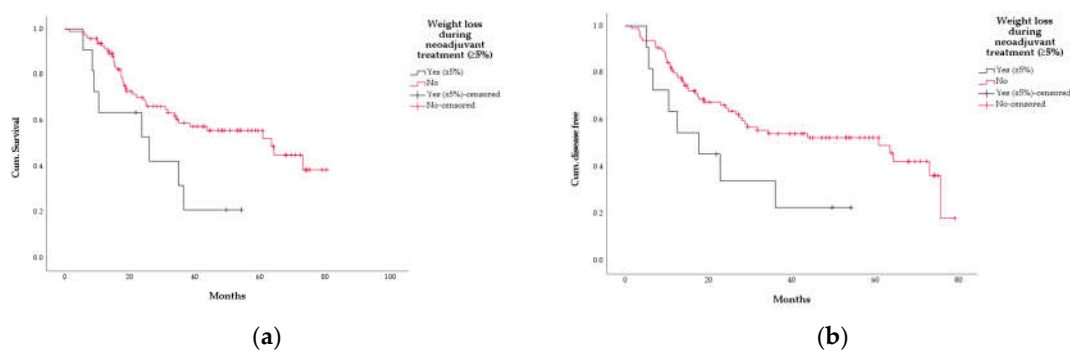


Figure S5. Kaplan-Meier curves for male population only according to weight loss during neoadjuvant therapy (threshold: WL $\geq 5\%$, 108 analysable pts). (a) Overall Survival (black line: WL $\geq 5\%$, n= 11; 25.9 months; 95%-CI: 3.6 – 48.2; red line: WL $< 5\%$, n= 97; 63.5 months; 95%-CI: 40.8 – 86.2; p= 0.028); (b) Disease-Free Survival (black line: WL $\geq 5\%$, n= 11; 17.7 months; 95%-CI: 5.4 – 30; red line: WL $< 5\%$, n= 97; 60.8 months; 95%-CI: 31.3 – 90.3; p= 0.039).