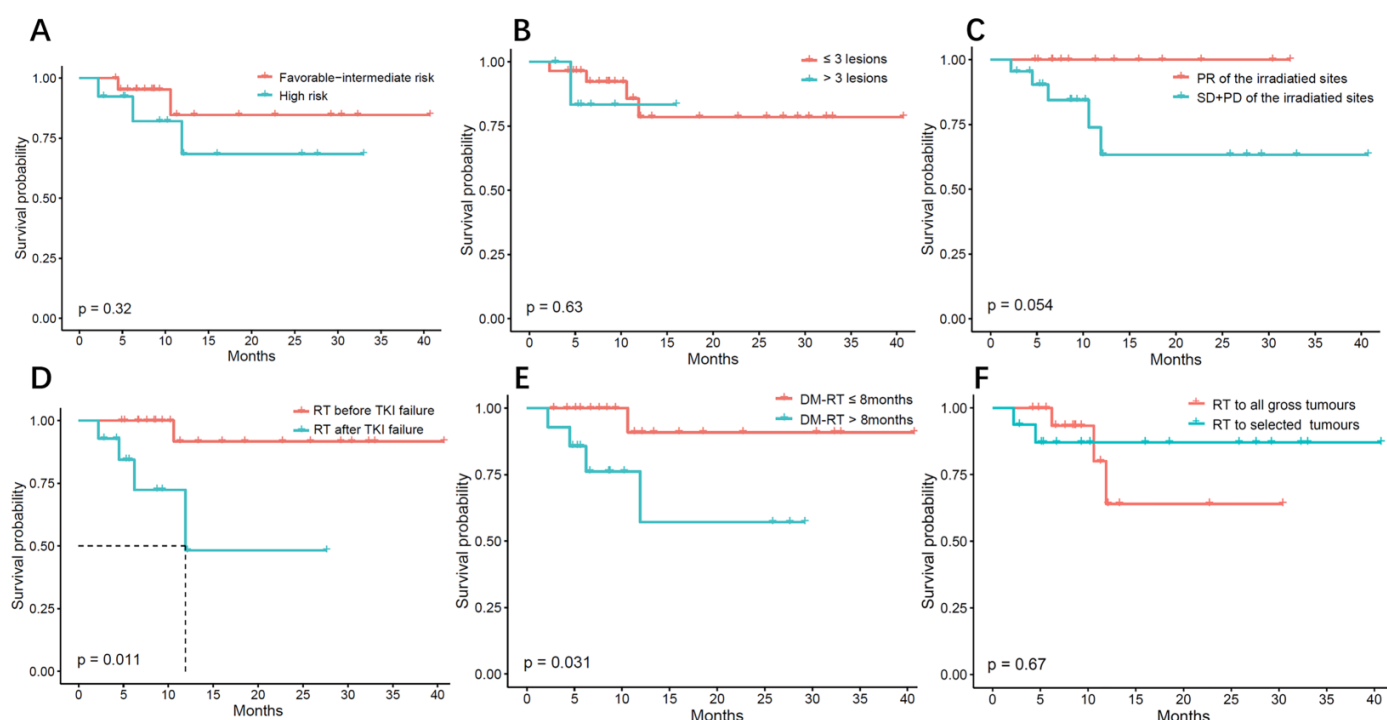


Article

Outcomes of High-Dose Stereotactic Ablative Radiotherapy to All/Multiple Sites for Oligometastatic Renal Cell Cancer Patients

Ming-Wei Ma, Hong-Zhen Li, Xian-Shu Gao, Ming-Zhu Liu, Huan Yin, Kai-Wei Yang, Jia-Yan Chen, Xue-Ying Ren and Dian Wang



Supplementary Figure S1. Local relapse-free survival (LRFS) of oligometastatic renal cell carcinoma patients ($n = 35$) treated with SABR/P-SABR in relation to (A) IMDC risk, (B) number of metastases, (C) response to RT, (D) sequencing with TKI, (E) time from first metastasis to RT, and (F) radiation coverage.

Supplementary Table S1. Univariate and multivariate analysis for PFS and OS.

	Univariate analysis for PFS ^a		Multivariate analysis for PFS		Univariate analysis for OS ^b		Multivariate analysis for OS	
	HR ^c (95% CI)	P value	HR (95% CI)	P value	HR (95% CI)	P value	HR (95% CI)	P value
Gender								
Male	1 (Ref)				1 (Ref)			
Female	1.16 (0.38-3.52)	0.800			1.71 (0.42-6.88)	0.452		
Age								
<65	1 (Ref)				1 (Ref)			
≥65	0.40 (0.13-1.19)	0.097			0.755 (0.19-3.05)	0.693		
IMDC^d score								

Favorable - intermediate risk	1 (Ref)				1 (Ref)			
High risk	3.88 (1.49-10.07)	0.005	4.46 (1.54-12.94)	0.006	5.56 (1.15-26.86)	0.033	2.82 (0.51-15.69)	0.235
Pathology								
Clear cell carcinoma	1 (Ref)				1 (Ref)			
Other pathological type	0.42 (0.10-1.85)	0.253			0.04 (0.00-56.63)	0.373		
Presence of metastases								
Metachronous metastases	1 (Ref)				1 (Ref)			
Synchronous metastases	1.11 (0.40-3.08)	0.847			1.39 (0.35-5.63)	0.642		
Number of metastatic lesions								
≤3	1 (Ref)				1 (Ref)			
4-5	5.70 (1.92-16.86)	0.002	8.97 (2.58-31.18)	0.001	12.07 (2.57-56.64)	0.002	17.06 (2.66-109.55)	0.003
Sequencing with TKI^e								
Before failure of TKI	1 (Ref)				1 (Ref)			
After failure of TKI	2.49 (0.97-6.40)	0.057			6.53 (1.46-29.18)	0.014	7.80 (1.24-49.06)	0.028
Time interval from first distant metastasis to radiation therapy								
> the following months	1 (Ref)				1 (Ref)			
> 6 months	1.68 (0.65-4.34)	0.285			4.64 (0.91-23.72)	0.065		
> 8 months	2.54 (0.98-6.61)	0.055			2.76 (0.73-10.51)	0.136		
>12 months	2.60 (0.99-6.84)	0.053			3.28 (0.86-12.49)	0.082		
Use of PD-1^f inhibitor								
No	1 (Ref)							
Yes	1.15 (0.44-3.04)	0.778			1.02 (0.21-4.97)	0.981		
Response of the irradiation sites								
PR ^g	1 (Ref)				1 (Ref)			
SD ^h + PD ⁱ	2.81 (0.93-8.54)	0.068			2.26 (0.47-11.01)	0.312		
Coverage of irradiation sites								
Full coverage	1 (Ref)				1 (Ref)			
Partial coverage	2.66 (1.04-6.80)	0.041	0.55 (0.20-1.53)	0.253	5.65 (0.70-45.95)	0.106		

Abbreviations: ^a PFS, progression-free survival; ^b HR, Hazard ratios; ^c OS, overall survival; ^d IMDC, International Metastatic Renal Cell Carcinoma Database Consortium; ^e TKI, tyrosine kinase inhibitor; ^f PD-1, programmed death-1; ^g PR, partial response; ^h SD, stable disease; ⁱ PD, progressive disease.