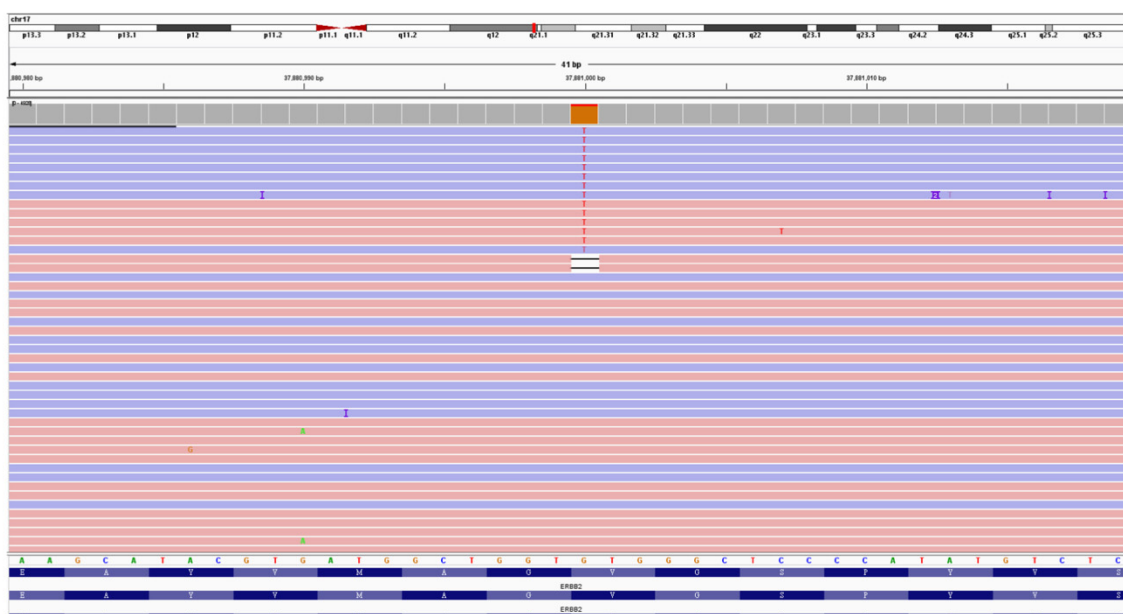
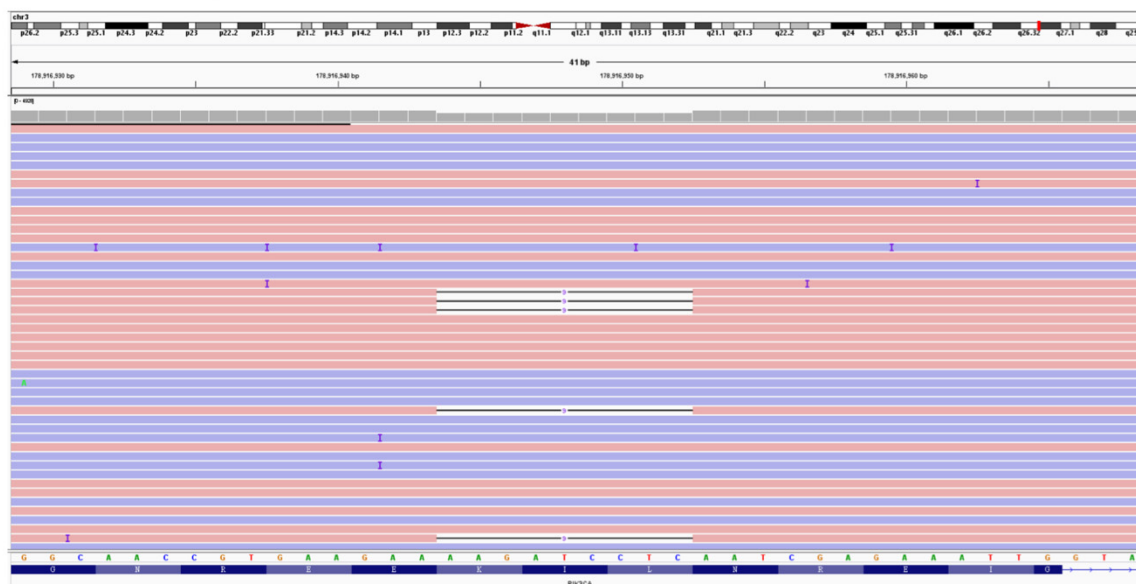


**A** CDH1 c.687+1G>T



**B** ERBB2 c.2329G>T



**C** PIK3CA c.333\_341delGATCCTCAA

**Supplementary Figure 1.** Images of *CDH1*, *ERBB2*, and *PIK3CA* gene at specific loci were taken using Integrative genomics viewer (IGV) software. (A) In *CDH1*, the sequence revealed a nucleotide change of c.687+1G>T in *CDH1* gene, leading to a splice site mutation. (B) In *ERBB2*, the sequence revealed the nucleotide change of c.2329G>T, resulting in a valine-to-leucine substitution at codon 777 in *ERBB2*. This mutation has been reported in breast cancer as an activating mutation that is sensitive to the irreversible kinase inhibitor, neratinib. (C) In *PIK3CA*, the sequence showed a 9 bp deletion between nucleotides 333 and 341, resulting in an in-frame deletion of *PIK3CA* protein (p.K111\_L113del).