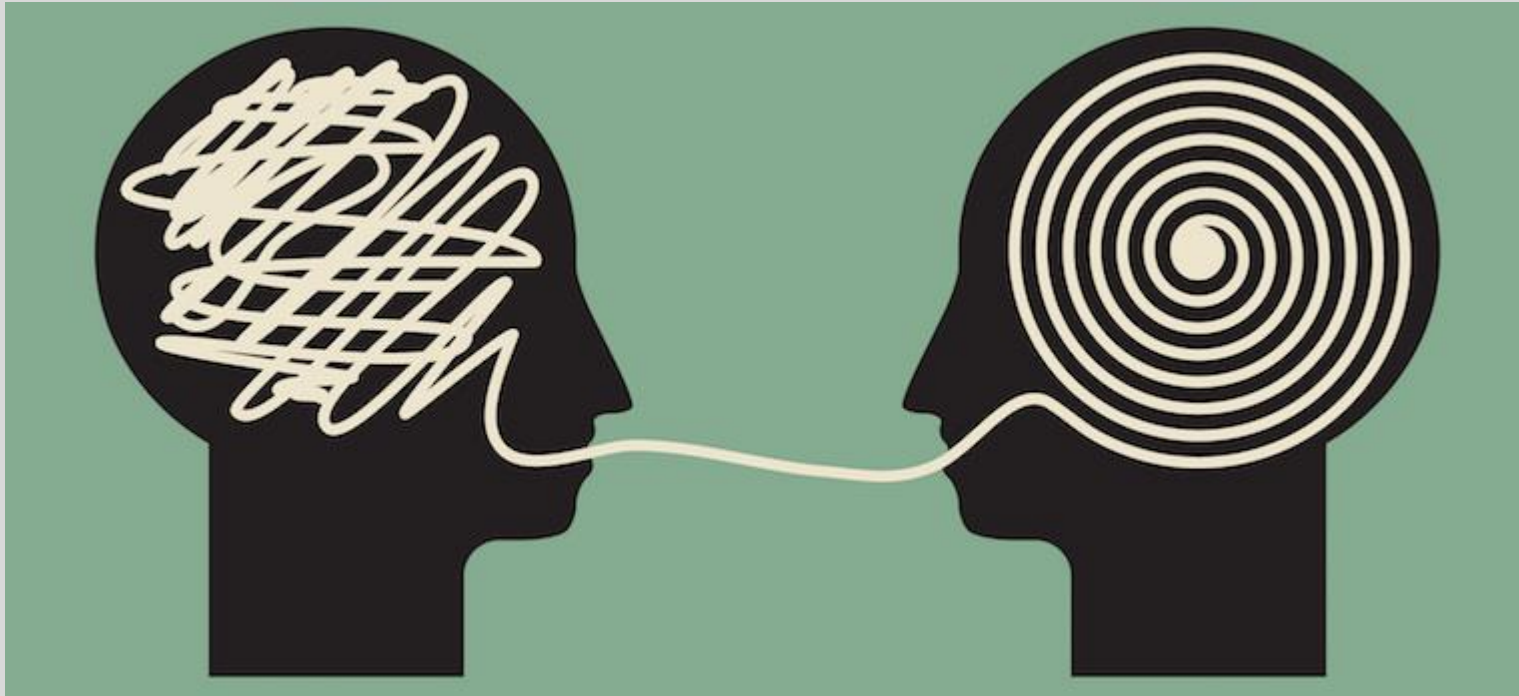


Aim

1. Give you the chance to 'check' preliminary themes
2. Discuss pathways to increase the visibility (and identify) young dementia carers
3. Think about 'next steps'



Did I get it right?



Theme 1:

It needs to be a 'whole family approach'

Theme 2:

Nothing fancy – A chat is sometimes all it's needed

Theme 3:

No voice / No presence

Theme 4:

Postcode/School lottery

Theme 5:

Need to 'link' with adult campaigns/initiatives
(Unite forces)

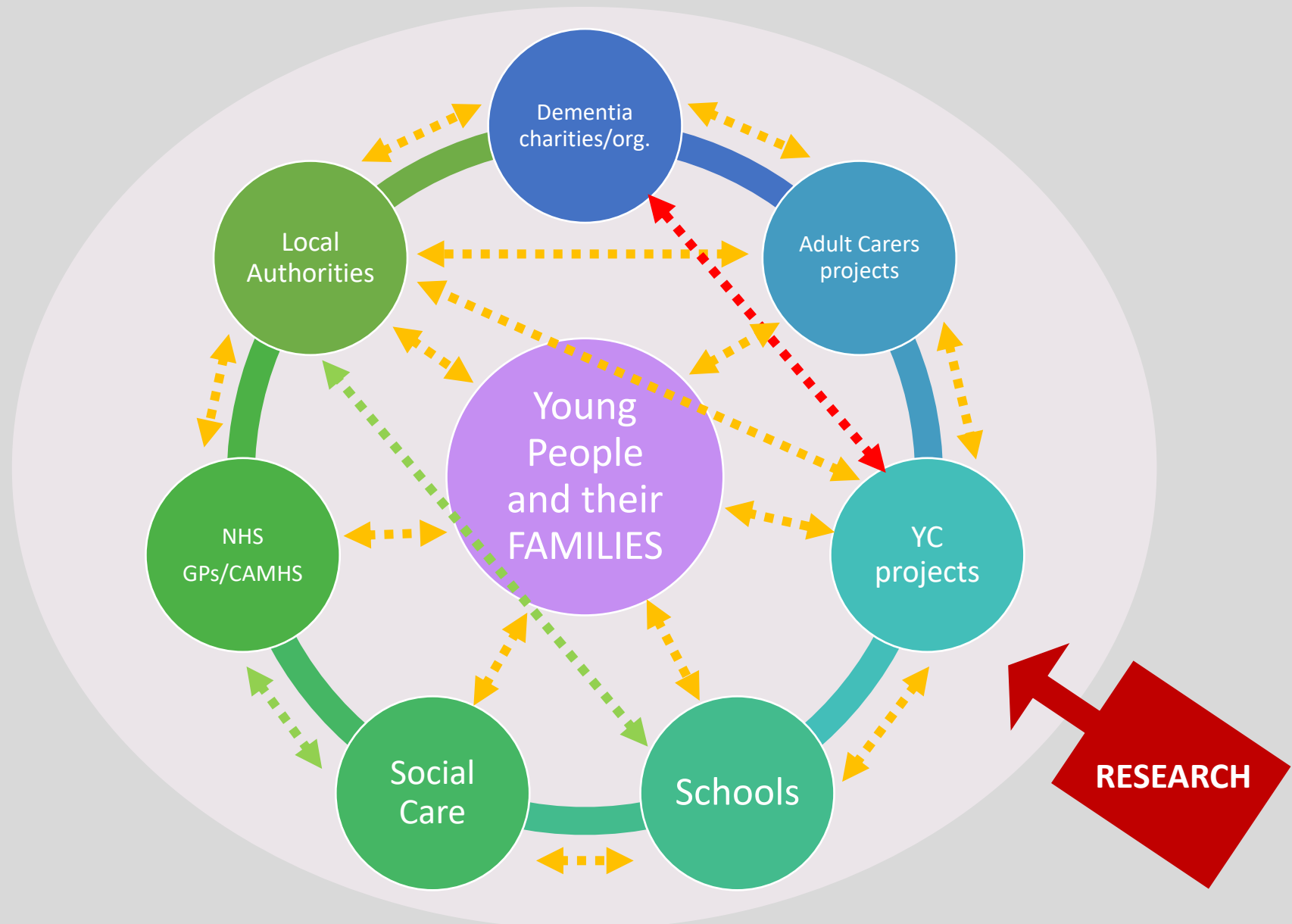
Theme 6:

It feels like nothing changes

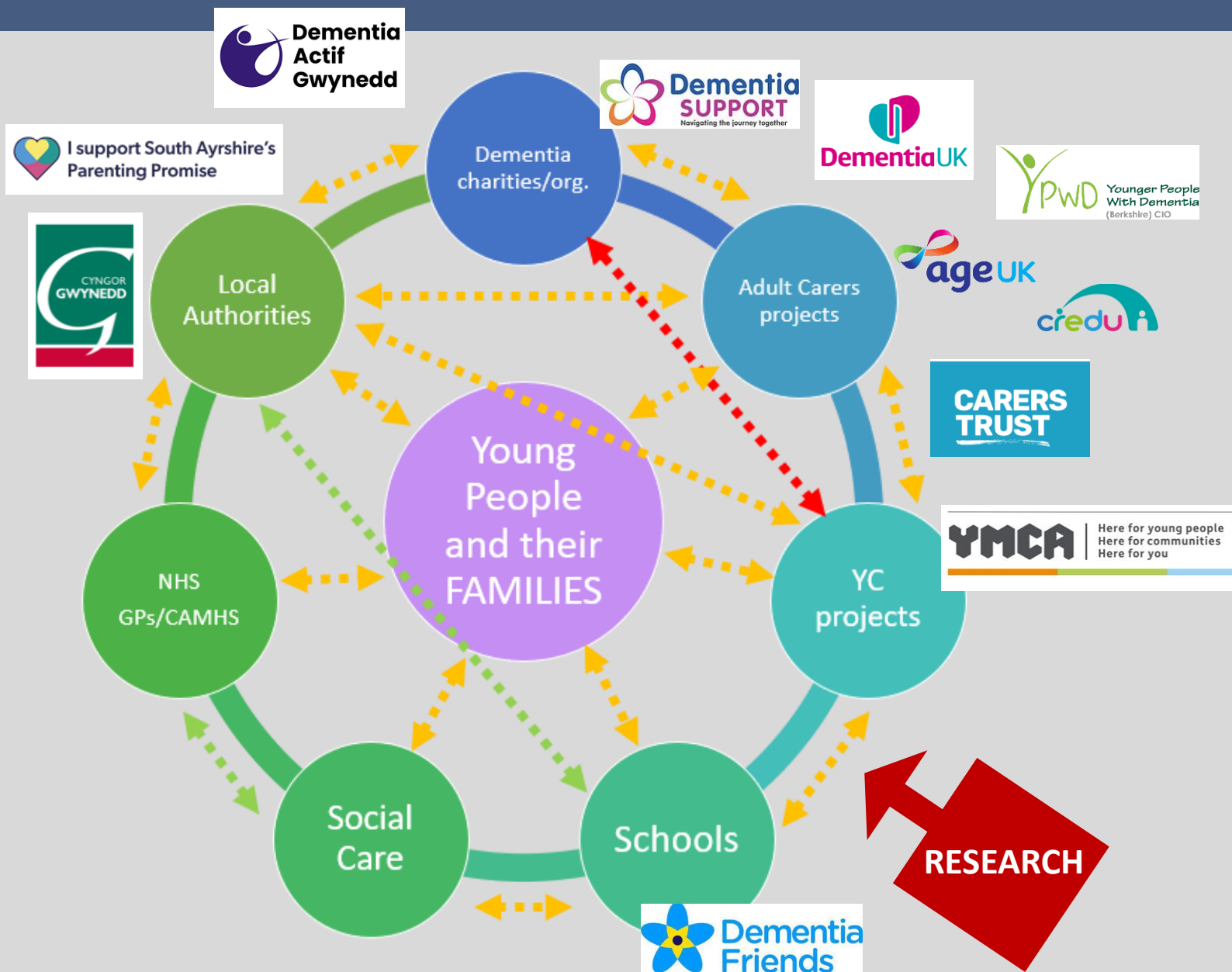
Theme 7:

I am not a carer. This is my 'normal'

Identification/Communication



Identification/Communication

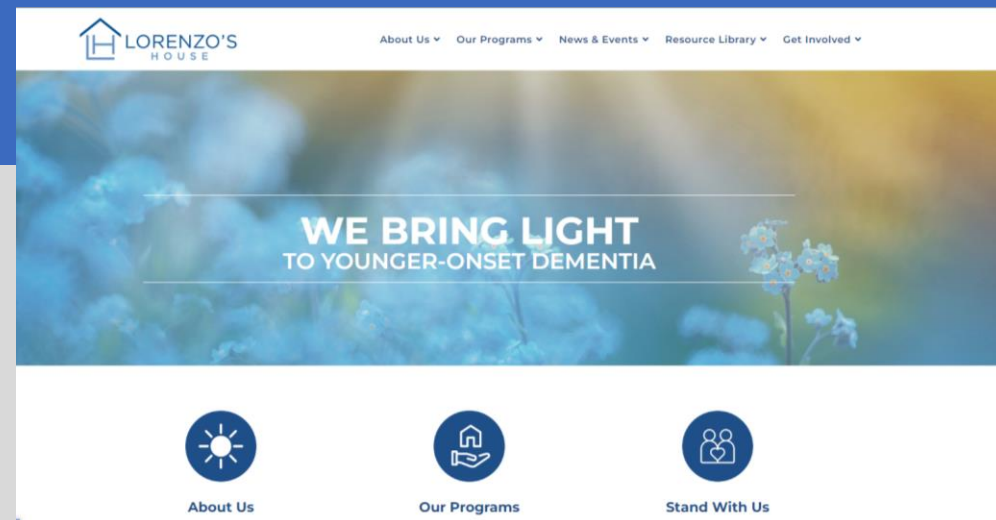


- How can these communication pathways improve?
- What can you/your organization do?



Increasing VISIBILITY

- Online Network (e.g. similar model as Lorenzo's House) – including peer support
- Creation of small clips/resources that can be embedded in current 'information and awareness' sessions
- **Podcast** led by young people



Tailored support – at the right time


Dementia UK Shop Job vacancies How we can support you Latest news Contact us

Dementia Helpline: **0800 888 6678**

Search our site

About dementia Get involved For professionals About us

You are here: [Home](#) / [Get support](#) / What is an Admiral Nurse?



What is an Admiral Nurse and how can they help?

Admiral Nurses are specialist dementia nurses. Continually supported and developed by Dementia UK, they provide life-changing support for families affected by all forms of dementia – including Alzheimer's disease.

We are



iSupport
For Young Carers

Training and support manual for young carers of people with dementia



What next?

