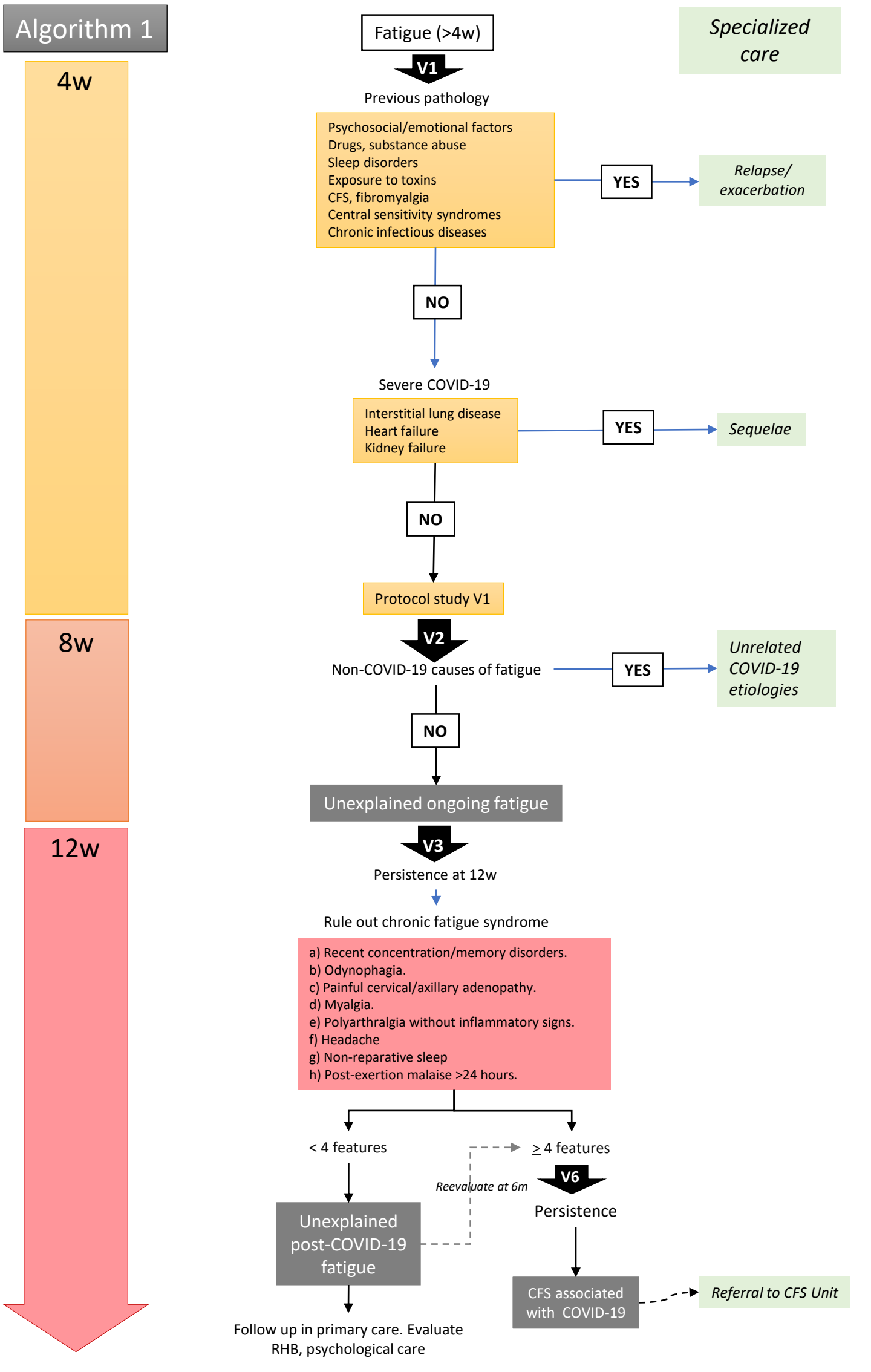
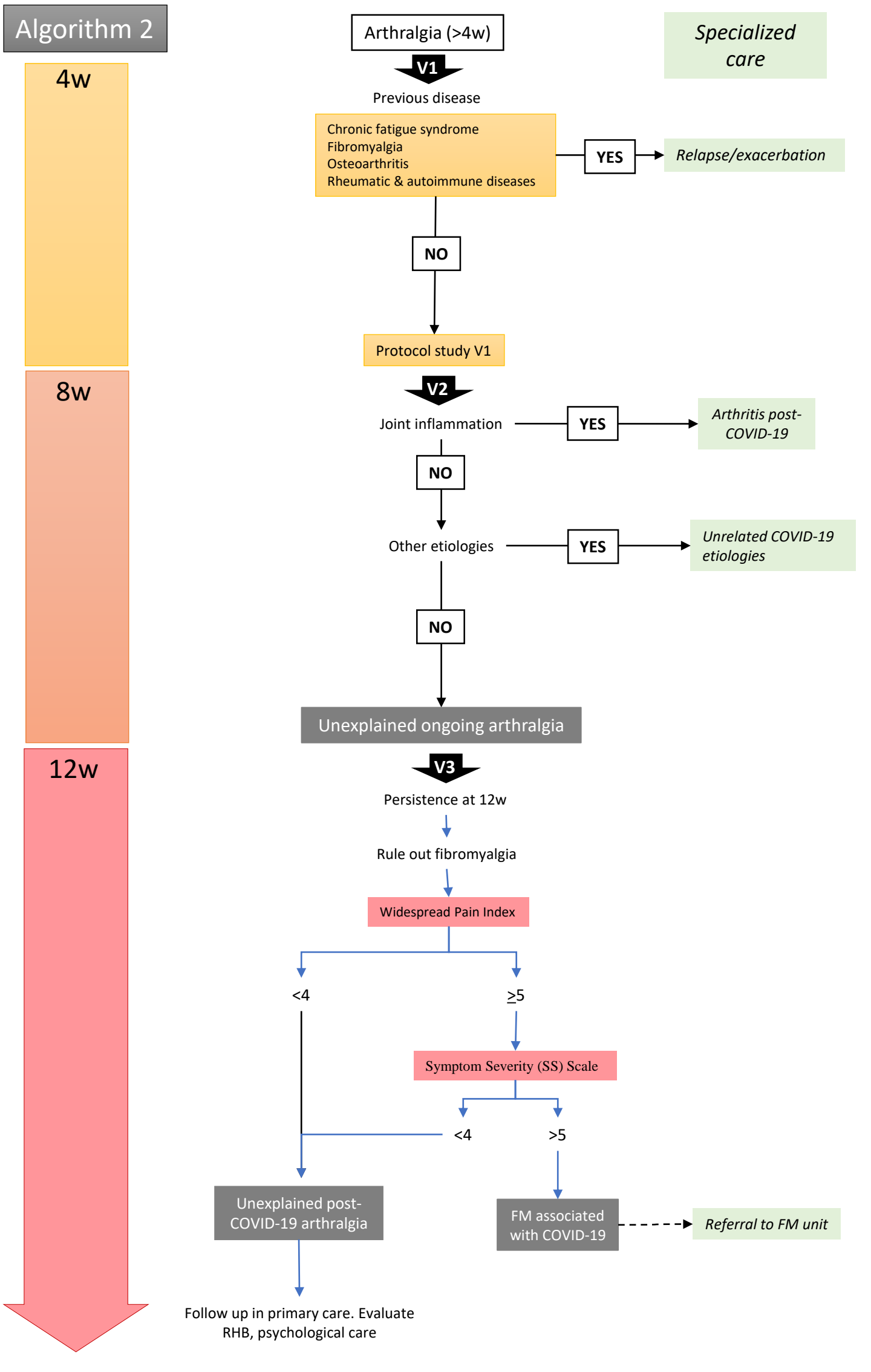


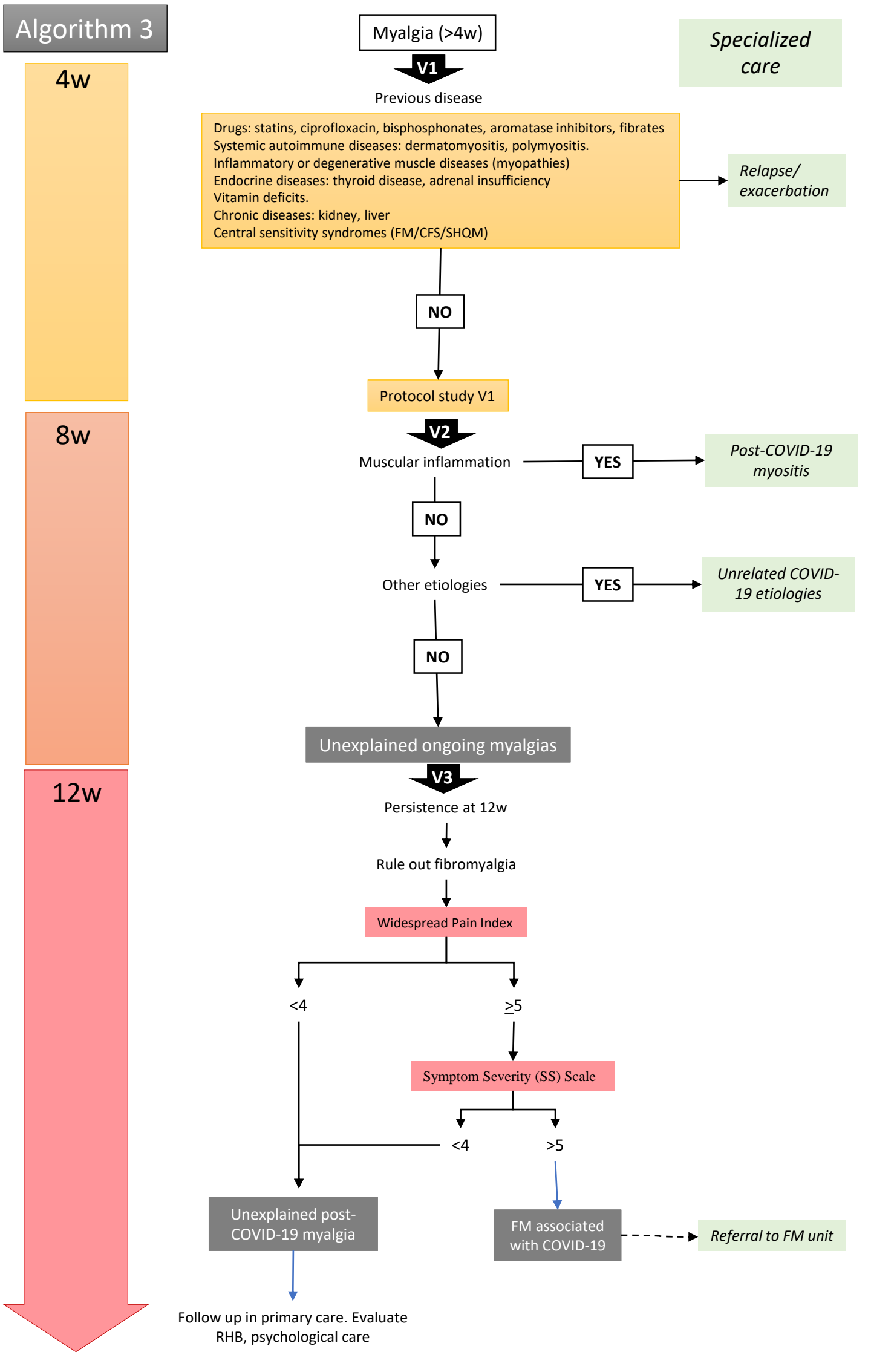
Algorithm 1



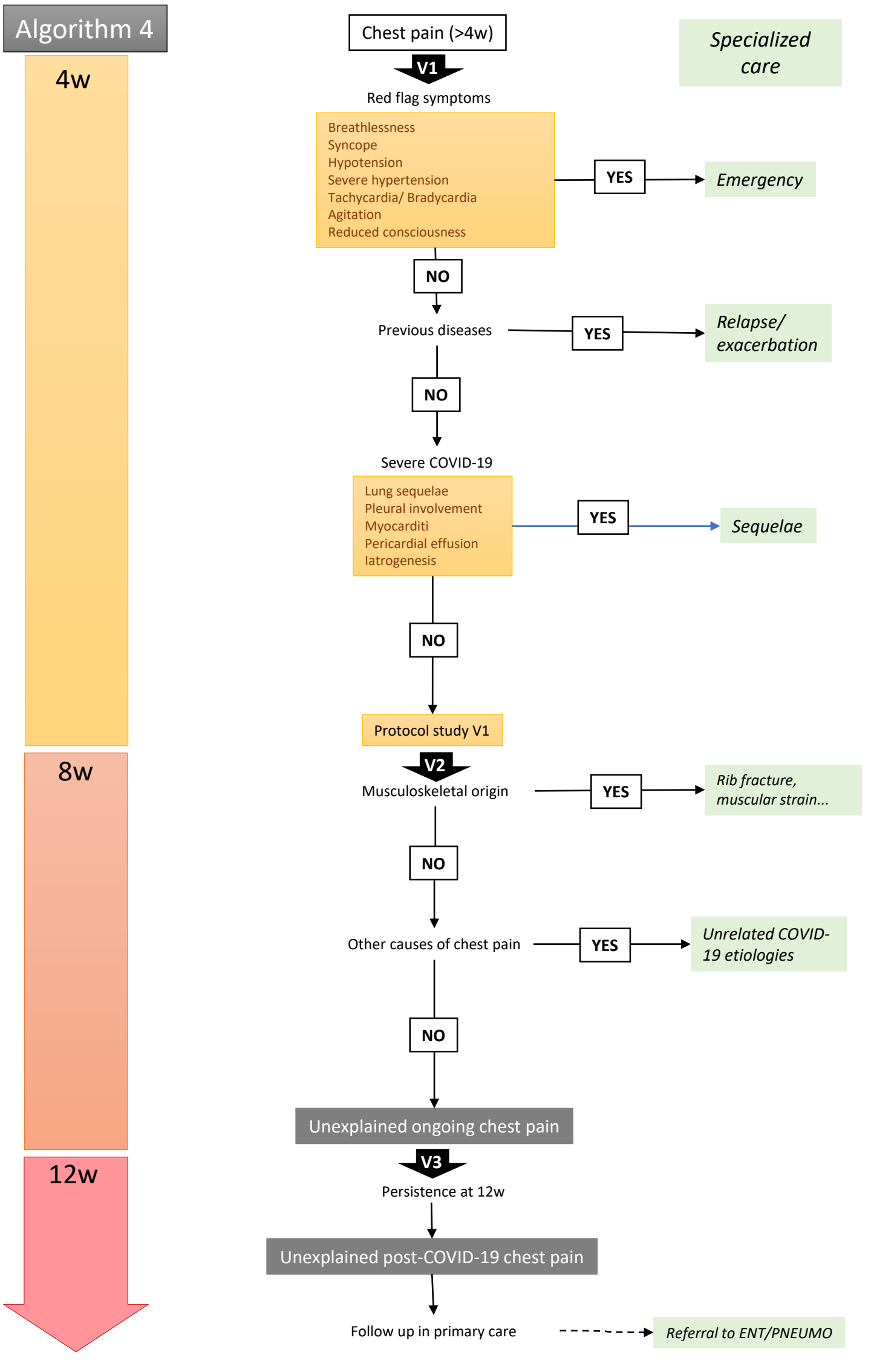
Algorithm 2



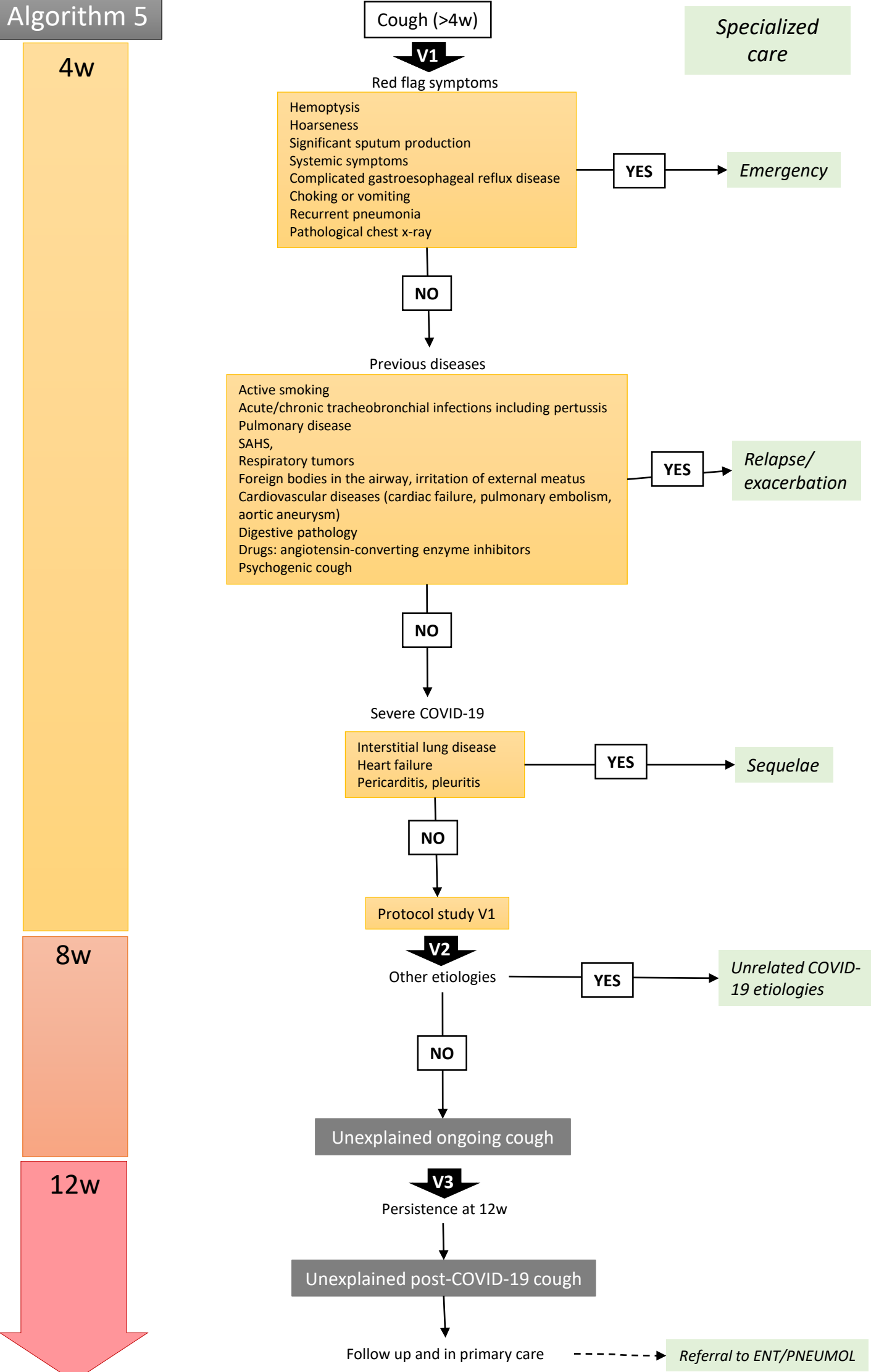
Algorithm 3



Algorithm 4



Algorithm 5

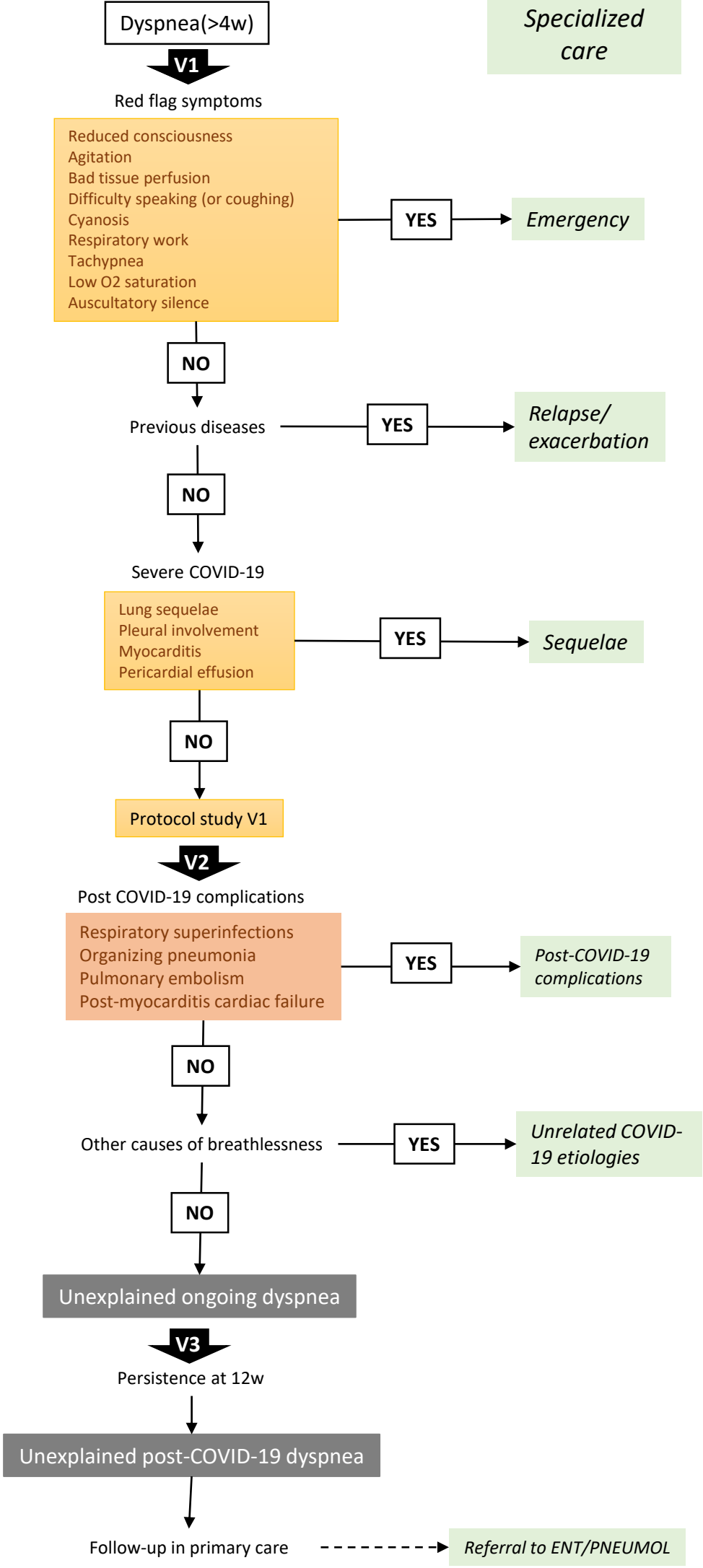


Algorithm 6

4w

8w

12w



Algorithm 7

4w

8w

12w

Anosmia/dysgeusia (>4w)

V1

Previous diseases/conditions

- Drugs (especially intranasal)
- Smoking
- Sinus pathology/rhinitis
- Neurological diseases (tumors, dementia, Parkinson's)
- Consumption of addictive substances intranasally
- Previous head and neck radiation
- Recent nasal or breast surgery
- Nasal and cerebral tumors
- Toxins

YES

Specialized care

Relapse/  
exacerbation

NO

Protocol study V1

V2

Other causes of anosmia/dysgeusia

YES

Unrelated  
COVID-19  
etiologies

NO

Unexplained ongoing anosmia/dysgeusia

V3

Persistence at 12w

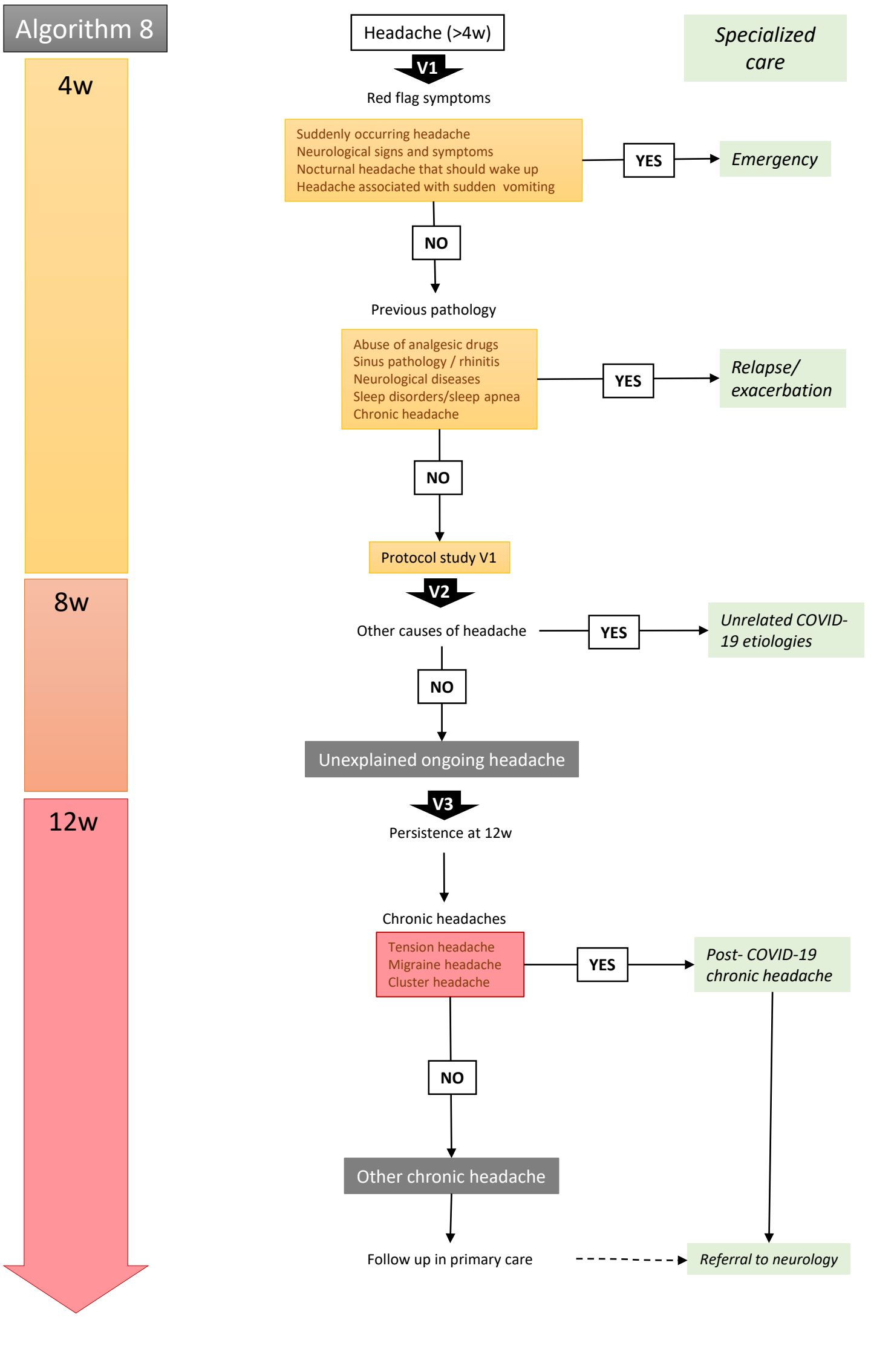
Unexplained post-COVID-19 anosmia/disgeusia

Follow-up in primary care

Referral to ENT

----->

Algorithm 8





Algorithm 9

