

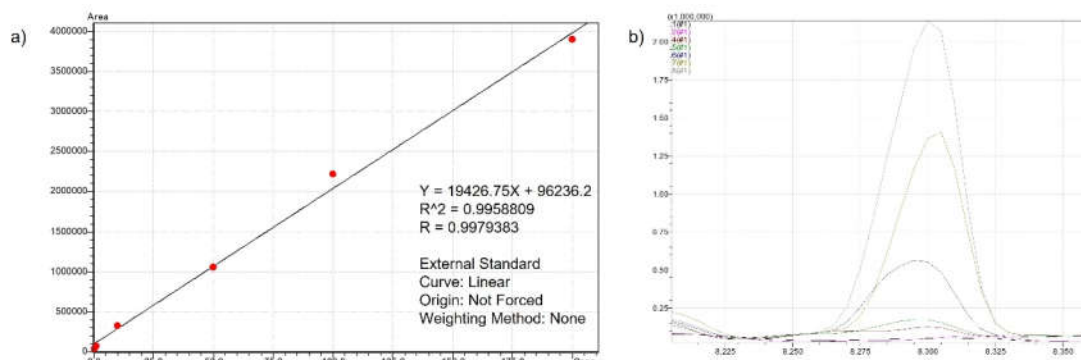
Supplementary Material:

## Concentrations of Seven Phthalate Monoesters in Infants and Toddlers Quantified in Urine Extracted from Diapers

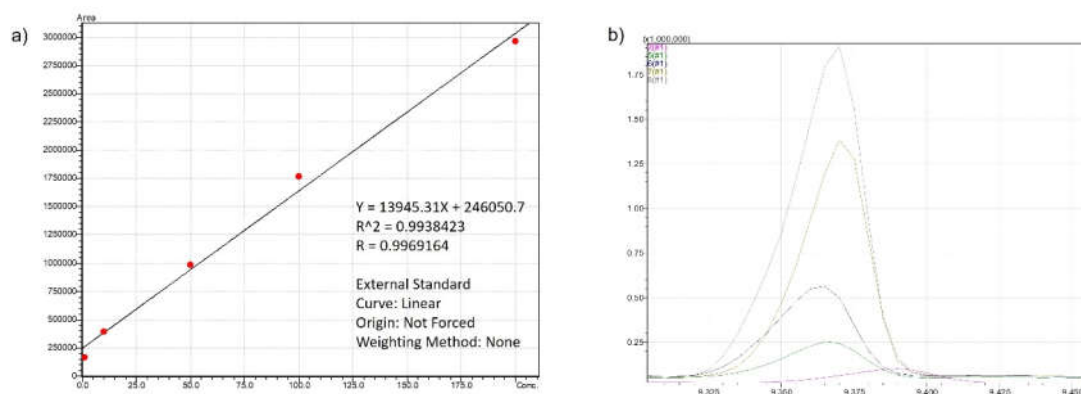
Fiorella Lucarini <sup>1</sup>, Marc Blanchard <sup>1</sup>, Tropoja Krasniqi <sup>1</sup>, Nicolas Duda <sup>1</sup>, Gaëlle Bailat Rosset <sup>2</sup>, Alessandro Ceschi <sup>3,4,5</sup>, Nicolas Roth <sup>6</sup>, Nancy B. Hopf <sup>6,7</sup>, Marie-Christine Broillet <sup>1</sup> and Davide Staedler <sup>1,2,\*</sup>

- <sup>1</sup> Department of Biomedical Sciences, University of Lausanne, 1011 Lausanne, Switzerland; fiorella.lucarini@unil.ch (F.L.); marc.blanchard@unil.ch (M.B.); tropoja.krasniqi@unil.ch (T.K.); nicolas.duda@unil.ch (N.D.); marie-christine.broillet@unil.ch (M.-C.B.)
- <sup>2</sup> Scitec Research SA, Av. De Provence 18, 1007 Lausanne, Switzerland; gbailat@scitec-research.com
- <sup>3</sup> Division of Clinical Pharmacology and Toxicology, Institute of Pharmacological Sciences of Southern Switzerland, Ente Ospedaliero Cantonale, 6900 Lugano, Switzerland
- <sup>4</sup> Faculty of Biomedical Sciences, Università della Svizzera Italiana, 6900 Lugano, Switzerland
- <sup>5</sup> Department of Clinical Pharmacology and Toxicology, University Hospital Zurich, 8091 Zurich, Switzerland
- <sup>6</sup> Swiss Centre for Applied Human Toxicology (SCAHT), University of Basel, 4055 Basel, Switzerland; nicolas.roth@unibas.ch (N.R.); nancy.hopf@unisanté.ch (N.B.H.)
- <sup>7</sup> Center for Primary Care and Public Health (Unisanté), University of Lausanne, 1007 Lausanne, Switzerland
- \* Correspondence: davide.staedler@unil.ch; Tel.: +41-(0)-79-702-1423

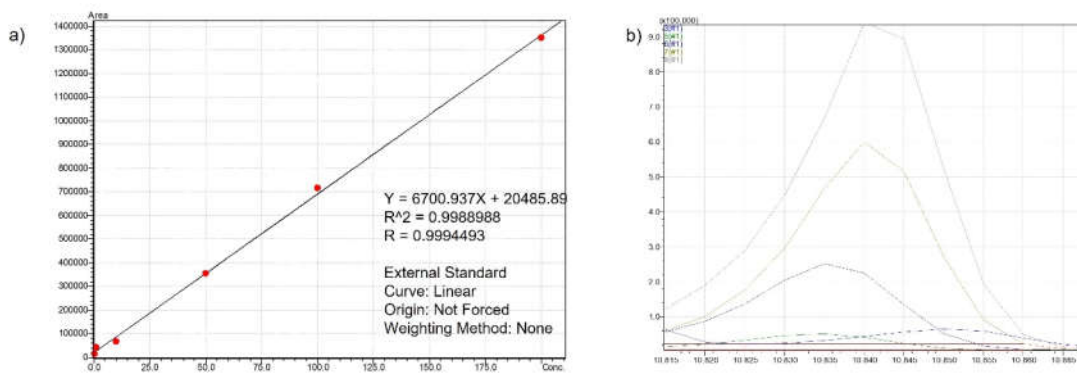
## Calibration curves and chromatograms



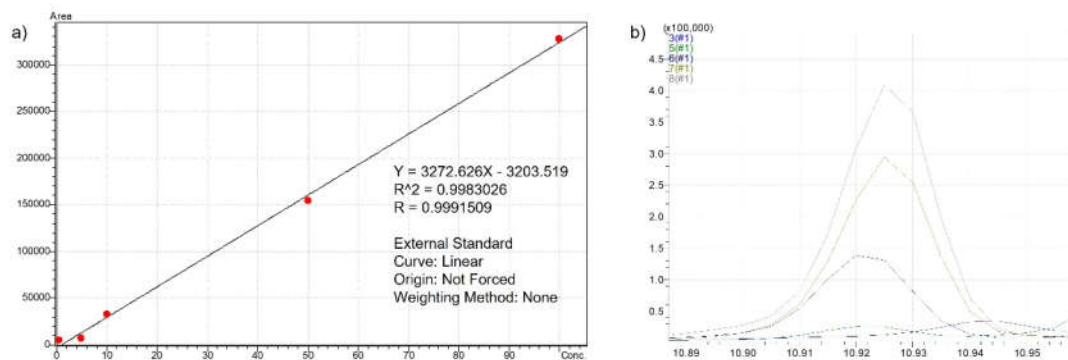
**Figure S1:** a) calibration curve for MEP, TMS derivative; b) GC-MS chromatograms for the quantifier ion at the calibration points.



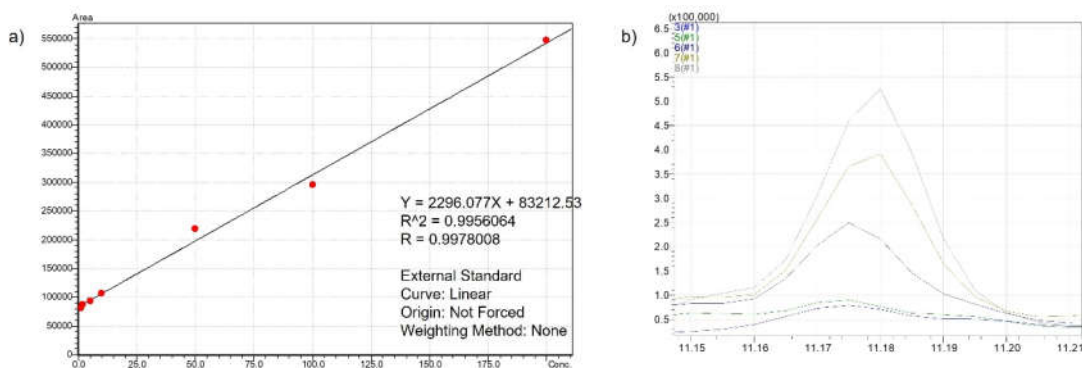
**Figure S2:** a) calibration curve for MBP, TMS derivative; b) GC-MS chromatograms for the quantifier ion at the calibration points.



**Figure S3:** a) calibration curve for MCHP, TMS derivative; b) GC-MS chromatograms for the quantifier ion at the calibration points.

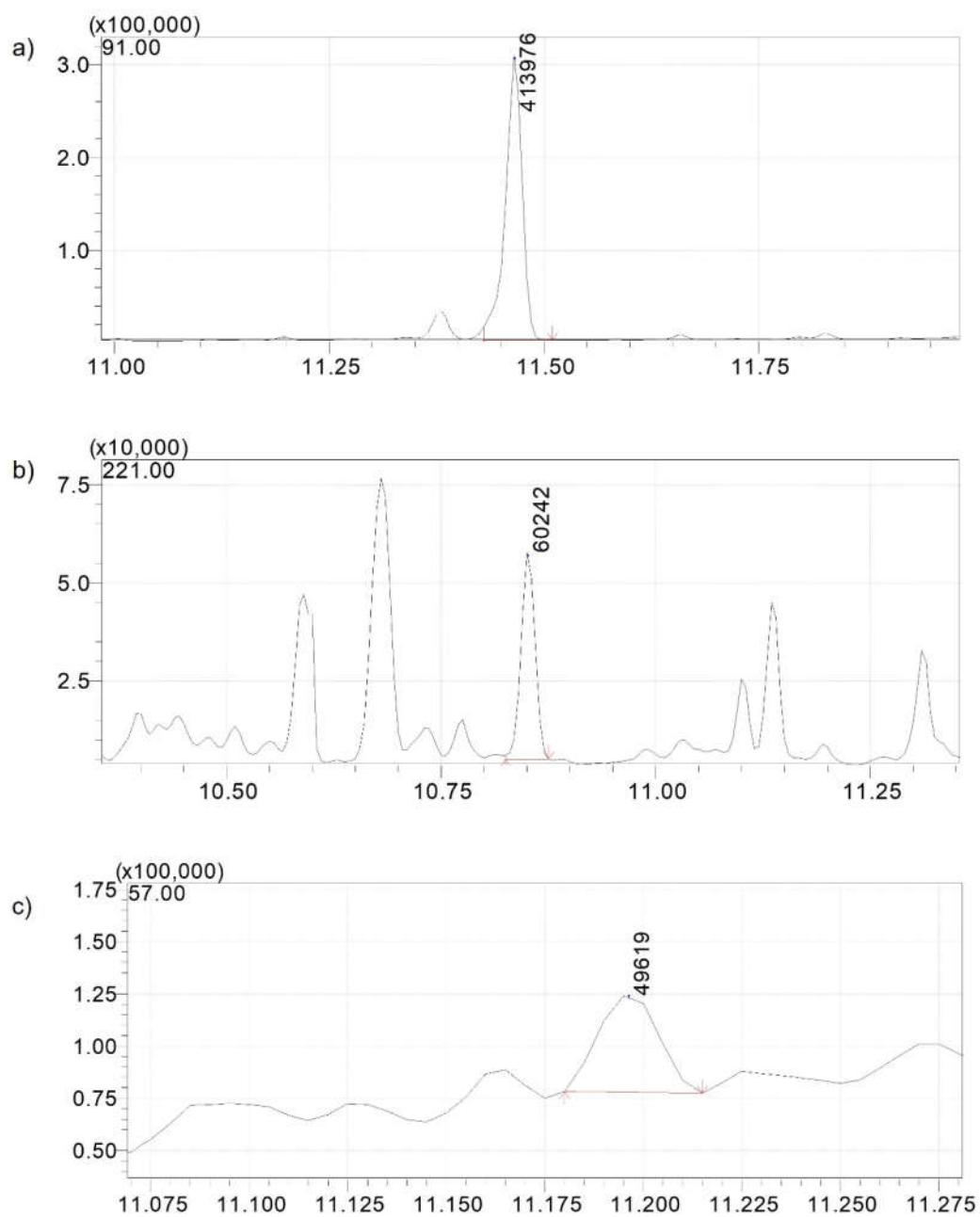


**Figure S4:** a) calibration curve for MEHP, TMS derivative; b) GC-MS chromatograms for the quantifier ion at the calibration points.



**Figure S5:** a) calibration curve for MTMHP, TMS derivative; b) GC-MS chromatograms for the quantifier ion at the calibration points.





**Figure S9:** Example of Chromatograms with detectable concentrations of a) MBzP, b) MCHP, c) MTMHP.

**Table S1:** Ranges of recovery for each metabolite.

Derivatized phthalate metabolite	Diaper Recoveries %		
	10mg/L	50mg/L	100 mg/L
MEP	130	134	140
MBP	120	129	98
MCHP	129	116	126
MEHP	87	96	85
MTMHP	67	67	65
MnOP	64	62	79
MBzP	118	109	124