

# Pb content, risk level and primary-source apportionment in wheat and rice grains in the Lihe River watershed, Taihu region

## Contents

**Figure S1.** Location of the study area and distribution of sampling points.

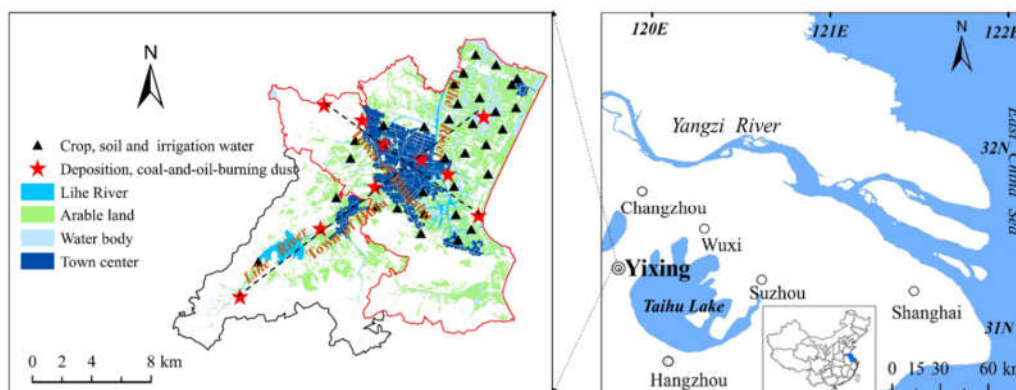
**Figure S2.** Relationships between  $^{207}\text{Pb}/^{206}\text{Pb}$  and  $^{208}\text{Pb}/^{206}\text{Pb}$  for soils and possible contamination sources. SM = suspended matter in irrigation water; filtered water = filtered irrigation water.

**Figure S3.** Pb isotopic ratios in dustfall and its Pb sources.

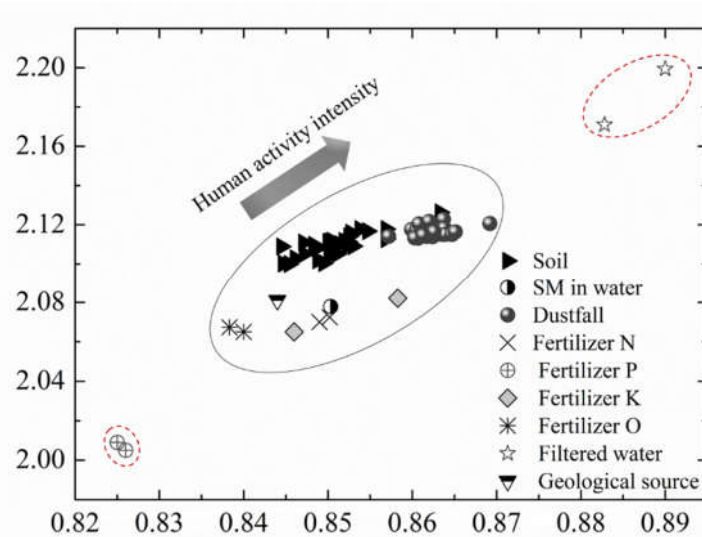
**Table S1.** Mean value of calculation parameters for daily average exposure of Pb

**Table S2.** Division of health risk grade.

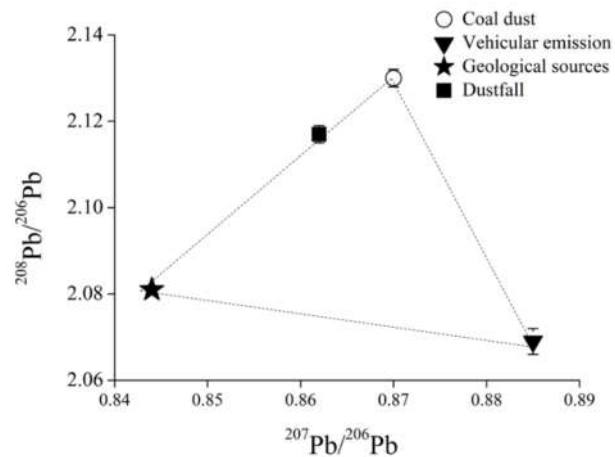
**Table S3.** Values of physicochemical properties in wheat and rice soil.



**Figure S1.** Location of the study area and distribution of sampling points.



**Figure S2.** Relationships between  $^{207}\text{Pb}/^{206}\text{Pb}$  and  $^{208}\text{Pb}/^{206}\text{Pb}$  for soils and possible contamination sources. SM = suspended matter in irrigation water; filtered water = filtered irrigation water.



**Figure S3** Pb isotopic ratios in dustfall and its Pb sources.

**Table S1.** Mean value of calculation parameters for daily average exposure of Pb

Parameter	Meaning	Unit	Child	Adult
$C_w$	Pb concentration in wheat grains	$\text{mg}\cdot\text{kg}^{-1}$	<b>0.539</b>	<b>0.539</b>
$C_r$	Pb concentration in rice grains	$\text{mg}\cdot\text{kg}^{-1}$	<b>0.447</b>	<b>0.447</b>
BW	Average bodyweight	kg	<b>17.6</b>	<b>67.6</b>
EF	Exposure frequency	$\text{d}\cdot\text{a}^{-1}$	365	365

ED	Exposure duration	a	6	70
AT	Average exposure time	d	365×ED	365×ED
CF	Unit conversion	kg·mg <sup>-1</sup>	1×10 <sup>-6</sup>	1×10 <sup>-6</sup>
IngR <sub>w</sub>	Ingestion rate of wheat	mg·d <sup>-1</sup>	<b>0.039</b>	<b>0.101</b>
IngR <sub>r</sub>	Ingestion rate of rice	mg·d <sup>-1</sup>	<b>0.091</b>	<b>0.234</b>

Note: the data in bold are the results of interview survey or test, and other data are provided by US EPA.

**Table S2.** Division of health risk grade.

Risk grade	Low	Medium-low	Medium	Next higher	high
Range of HQ	1<HQ≤1.5	1.5 < HQ≤ 2	2< HQ≤2.5	2.5 < HQ≤3	3< HQ

**Table S3.** Values of physicochemical properties in wheat and rice soil.

Soil properties	Soil type	Range	Mean	SD	CV
pH	Wheat soil	4.85-7.45	5.81	0.69	11.88
	Rice soil	4.99-7.59	6.00	0.76	12.61
CEC (cmol·kg <sup>-1</sup> )	Wheat soil	11.76-22.99	18.41	2.60	14.11
	Rice soil	14.78-23.79	18.31	2.88	15.74
EC (μs·cm <sup>-1</sup> )	Wheat soil	672-3050	1592.25	648.13	40.71
	Rice soil	695-4090	1934.78	866.24	44.77
TOC	Wheat soil	1.84-5.35	3.58	0.94	26.20
	Rice soil	0.97-6.62	3.45	1.45	42.11
Mean particle size	Wheat soil	8.45-52.06	24.37	8.37	34.41
	Rice soil	7.46-29.25	17.73	5.41	30.54

Note: “SD” represent “standard deviation”; “CV” represent “coefficient of variation”.