



Supplemental material

Table S1. The full sample, prevalences of those without unemployment, sickness absence or disability pension pre a year from 1994 to 2016.

| year | No unemployment | | | No sickness absence | | | No disability pension | | |
|------|-----------------|-----------|----|---------------------|-----------|----|-----------------------|-----------|----|
| | Full sample | Frequency | % | Full sample | Frequency | % | Full sample | Frequency | % |
| 1994 | 81488 | 65910 | 81 | 81682 | 71683 | 88 | 81682 | 74884 | 92 |
| 1995 | 81344 | 66516 | 82 | 81555 | 72219 | 89 | 81555 | 74765 | 92 |
| 1996 | 81293 | 66705 | 82 | 81511 | 73263 | 90 | 81511 | 74751 | 92 |
| 1997 | 81357 | 67150 | 83 | 81565 | 75331 | 92 | 81565 | 74736 | 92 |
| 1998 | 81337 | 68779 | 85 | 81519 | 73269 | 90 | 81519 | 74722 | 92 |
| 1999 | 81342 | 69751 | 86 | 81533 | 71846 | 88 | 81533 | 74673 | 92 |
| 2000 | 81375 | 71255 | 88 | 81560 | 70823 | 87 | 81560 | 74554 | 91 |
| 2001 | 81388 | 72616 | 89 | 81575 | 70181 | 86 | 81575 | 74263 | 91 |
| 2002 | 81654 | 73054 | 89 | 81877 | 70006 | 86 | 81877 | 74083 | 90 |
| 2003 | 81854 | 72664 | 89 | 82070 | 71535 | 87 | 82070 | 74003 | 90 |
| 2004 | 81702 | 71873 | 88 | 81927 | 72613 | 89 | 81927 | 73550 | 90 |
| 2005 | 81688 | 71849 | 88 | 81871 | 72551 | 89 | 81871 | 73294 | 90 |
| 2006 | 81861 | 72546 | 89 | 82057 | 73351 | 89 | 82057 | 73533 | 90 |
| 2007 | 82049 | 74745 | 91 | 82244 | 74204 | 90 | 82244 | 73825 | 90 |
| 2008 | 82149 | 75688 | 92 | 82340 | 75207 | 91 | 82340 | 74244 | 90 |
| 2009 | 79735 | 71090 | 89 | 79907 | 73579 | 92 | 79907 | 72303 | 90 |
| 2010 | 77329 | 69508 | 90 | 77496 | 71386 | 92 | 77496 | 70616 | 91 |
| 2011 | 74957 | 68739 | 92 | 75116 | 68915 | 92 | 75116 | 69031 | 92 |
| 2012 | 72650 | 66914 | 92 | 72819 | 66264 | 91 | 72819 | 67304 | 92 |
| 2013 | 70457 | 65028 | 92 | 70599 | 63878 | 90 | 70599 | 65439 | 93 |
| 2014 | 68157 | 63380 | 93 | 68290 | 61166 | 90 | 68290 | 63413 | 93 |
| 2015 | 66103 | 62046 | 94 | 66238 | 58774 | 89 | 66238 | 61578 | 93 |
| 2016 | 64046 | 60479 | 94 | 64189 | 56657 | 88 | 64189 | 59813 | 93 |

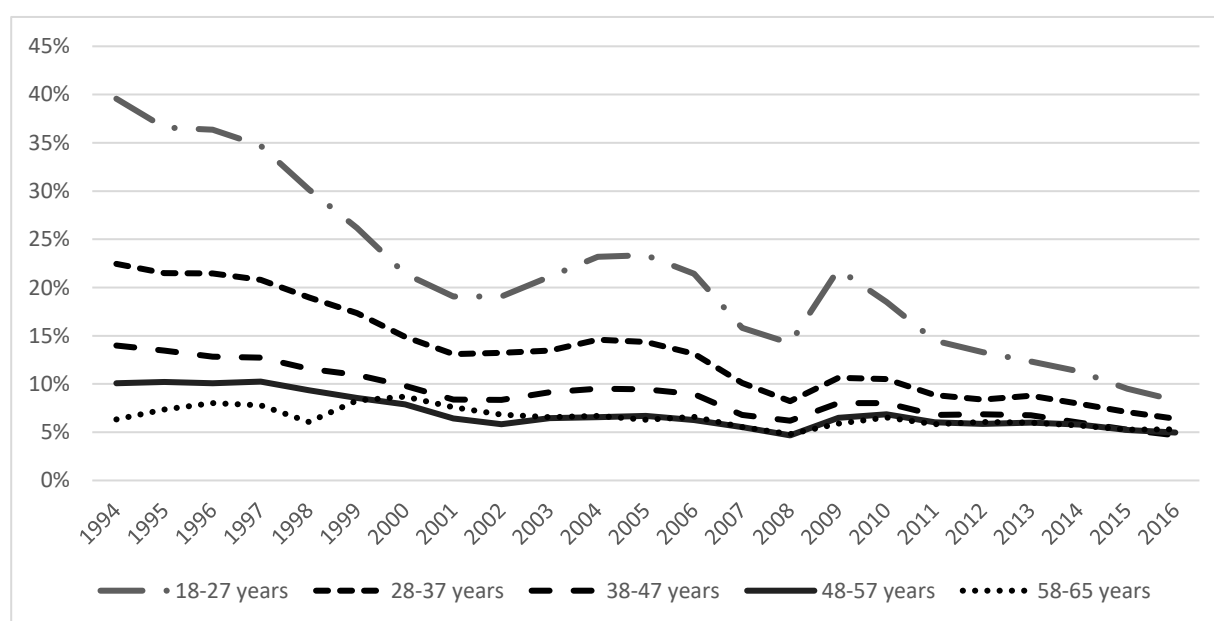


Figure S1. Prevalence of unemployment across age categories.

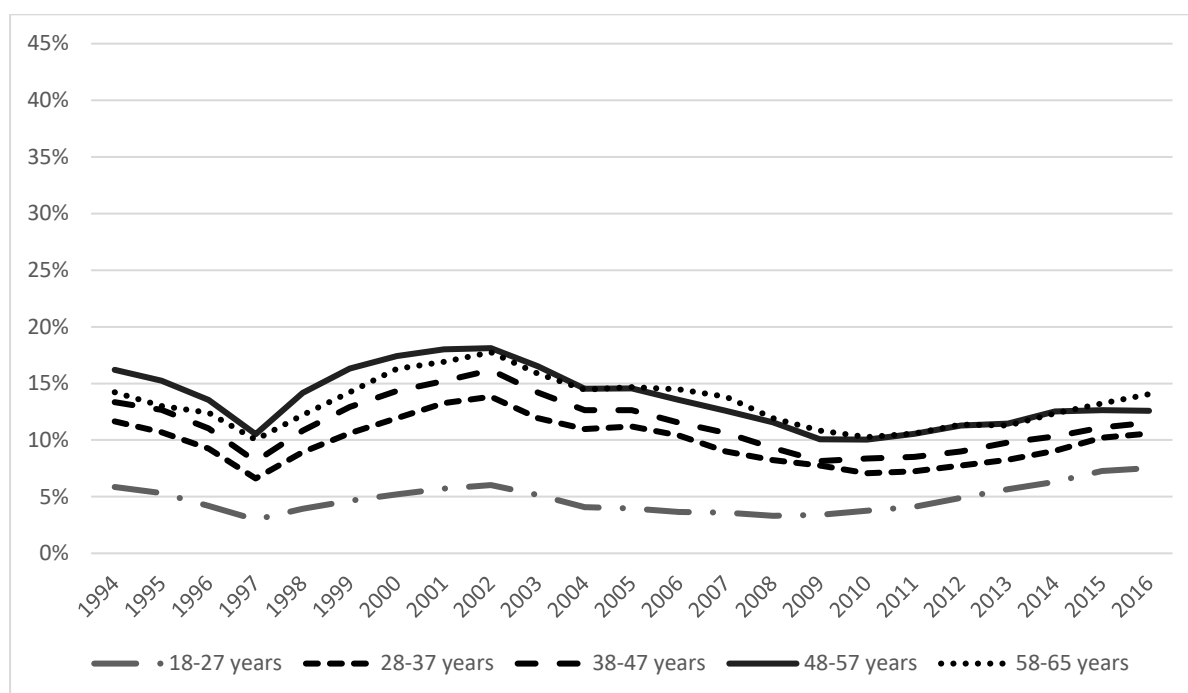


Figure S2. Prevalence of sickness absence across age categories.

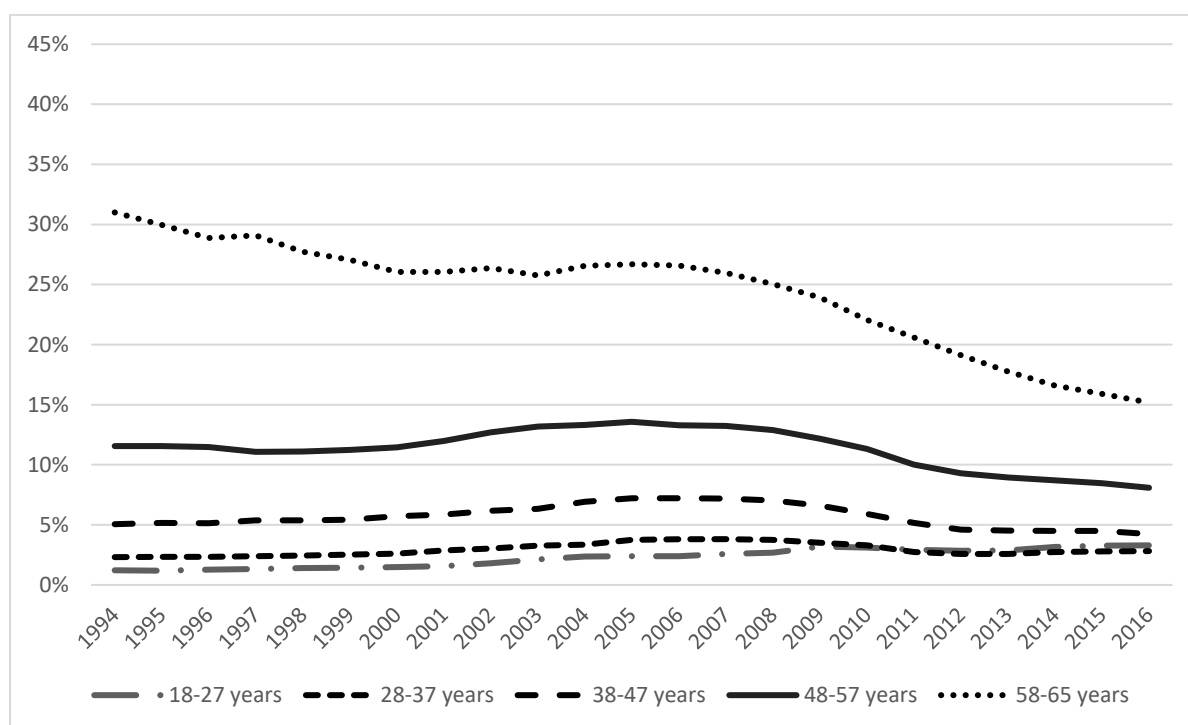


Figure S3. Prevalence of disability pension across age categories.