

Supplementary Materials

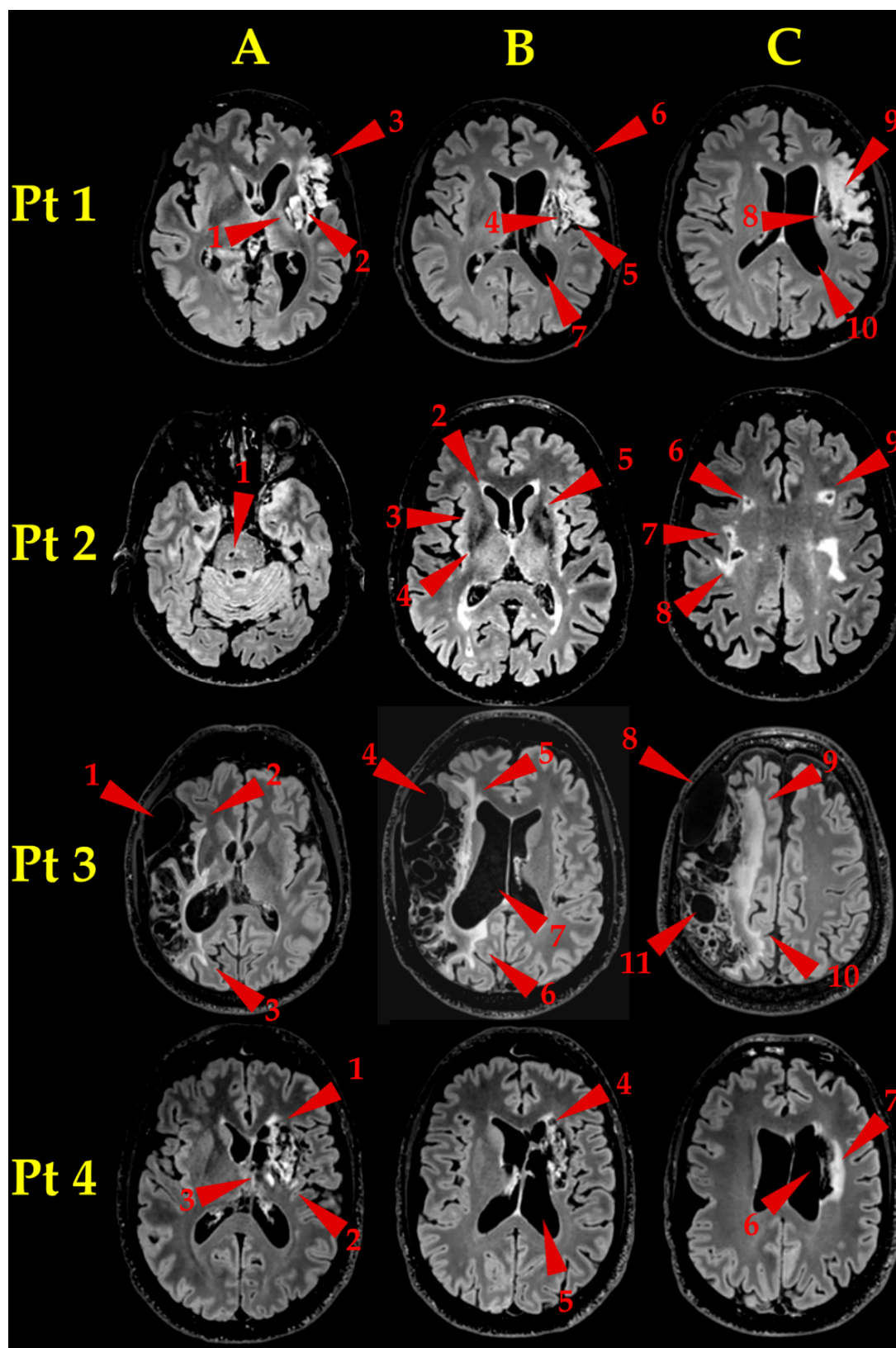


Figure S1. Lesions Morphology after HBOT. FLAIR T2-weighted images. Three axial slices at different levels (A, B, C) are shown for each Pt. Red arrowheads point to the lesions. Legends and arrowheads numbers as in Figure 1. Note some slight differences in Pts' positioning: actually, it is impossible to place the head in exactly the same position in different sessions. In all Pts, brain morphology showed no visible macroscopic changes after HBOT.