

Can Socioeconomic, Health, and Safety Data Explain the Spread of COVID-19 Outbreak on Brazilian Federative Units?

Diego Galvan^{1,2,3*}, Luciane Effting⁴, Hágata Cremasco⁴, Carlos Adam Conte-Junior^{1,2,3}

¹ COVID-19 Research Group, Center for Food Analysis (NAL), Technological Development Support Laboratory (LADETEC), Cidade Universitária, Rio de Janeiro, RJ, 21941-598, Brazil; conte@iq.ufrj.br

² Laboratory of Advanced Analysis in Biochemistry and Molecular Biology (LAABBM), Department of Biochemistry, Federal University of Rio de Janeiro (UFRJ), Cidade Universitária, Rio de Janeiro, RJ, 21941-909, Brazil

³ Nanotechnology Network, Carlos Chagas Filho Research Support Foundation of the State of Rio de Janeiro (FAPERJ), Rio de Janeiro, RJ, 20020-000, Brazil

⁴ Chemistry Department, State University of Londrina (UEL), Londrina, PR, 86057-970, Brazil; luciane.effting@uel.br; hagata@uel.br

* Correspondence: diegogalvann@gmail.com; diegogalvann@iq.ufrj.br, orcid: <https://orcid.org/0000-0001-8394-3431>.

Supporting Information

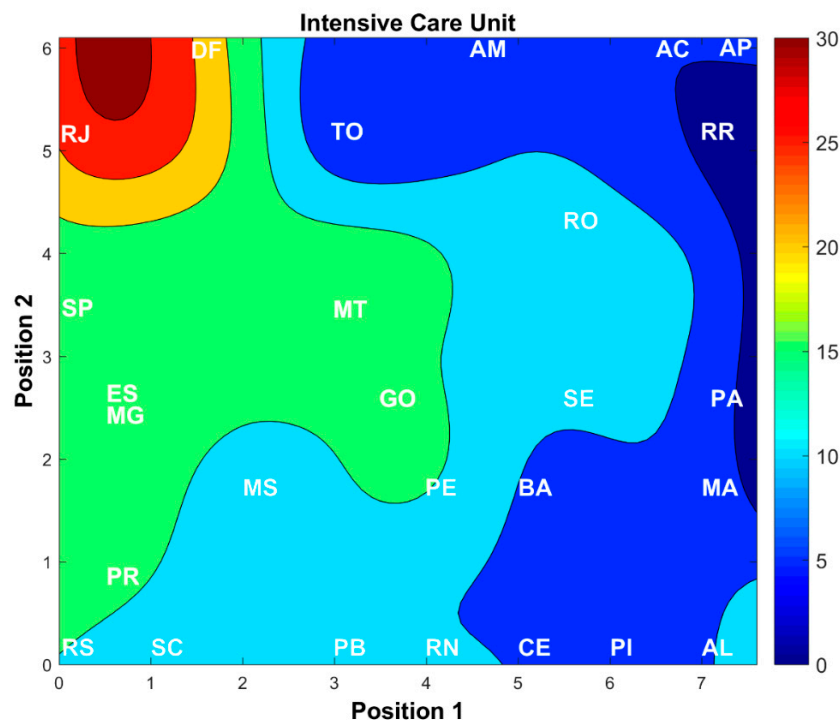


Figure S1 – Weight maps overlaid by topological maps for variable **Intensive Care Unit (ICU)** by Brazilian federative unit.

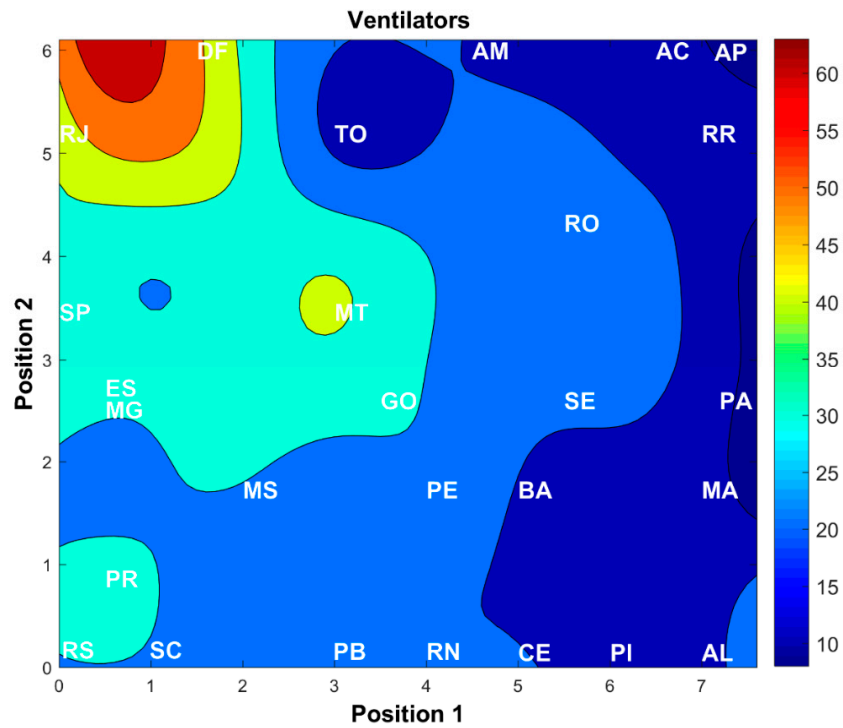


Figure S2 – Weight maps overlaid by topological maps for variable **Ventilators** by Brazilian federative unit.

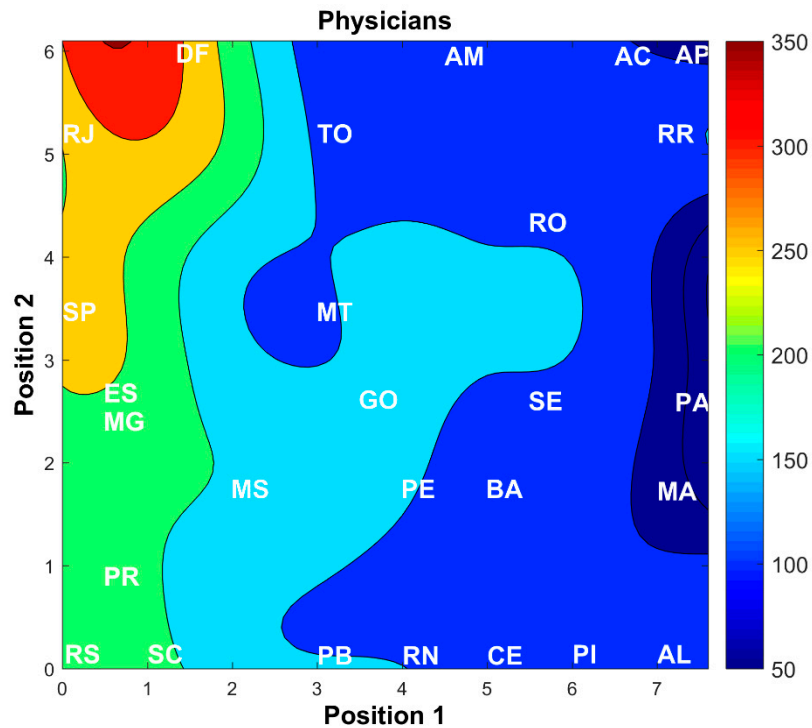


Figure S3 – Weight maps overlaid by topological maps for variable **Physicians** by Brazilian federative unit.

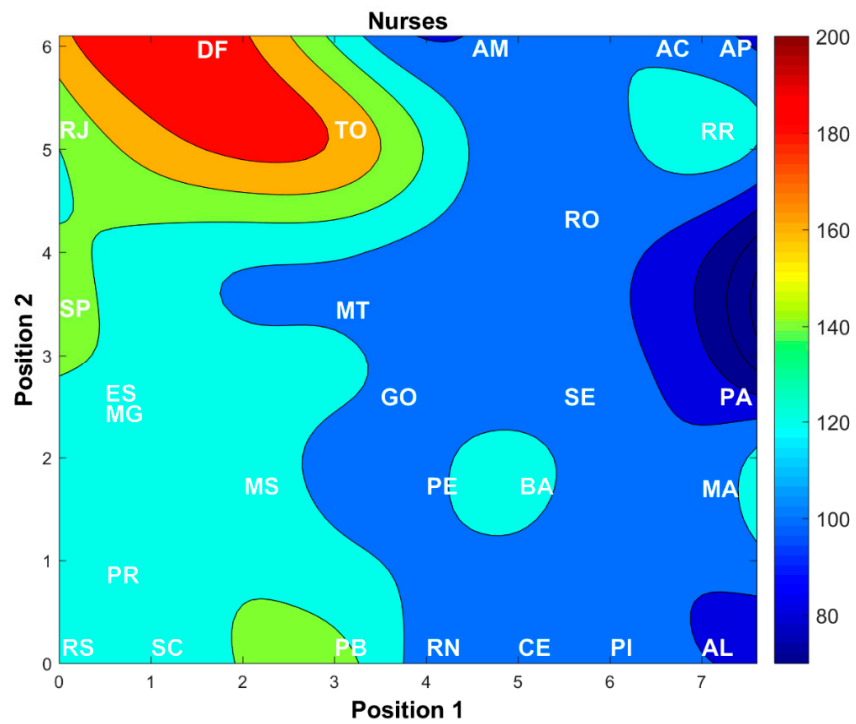


Figure S4 – Weight maps overlaid by topological maps for variable **Nurses** by Brazilian federative unit.

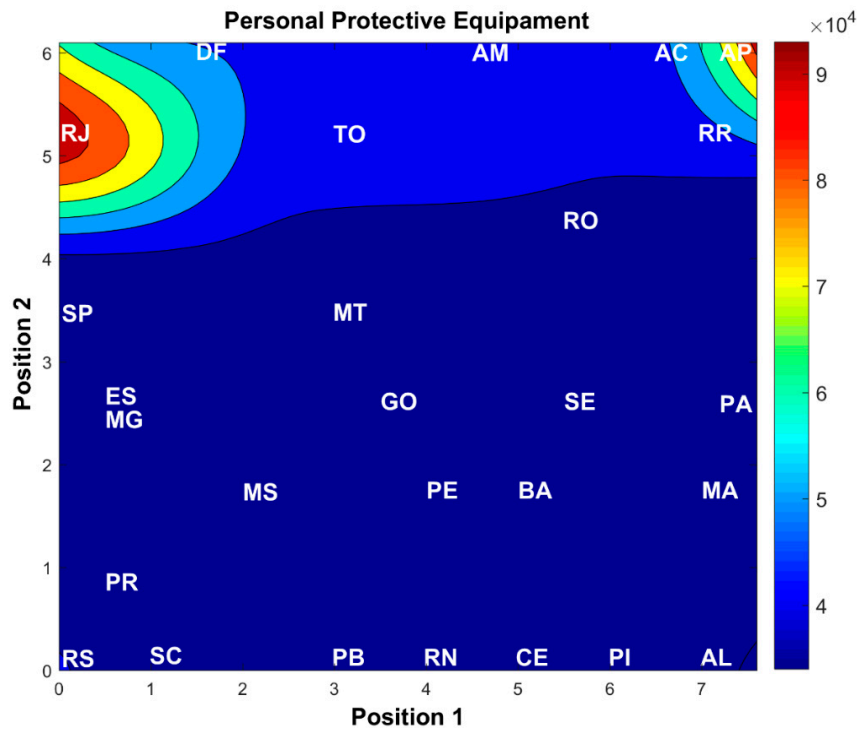


Figure S5 – Weight maps overlaid by topological maps for variable **Personal Protective Equipment** by Brazilian federative unit.

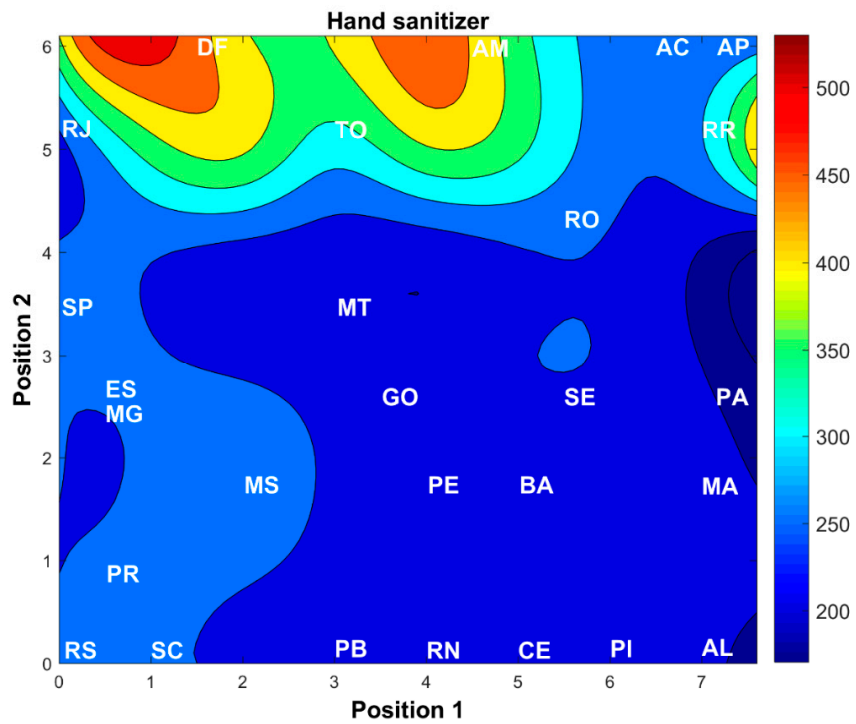


Figure S6 – Weight maps overlaid by topological maps for variable **Hand sanitizer** by Brazilian federative unit.

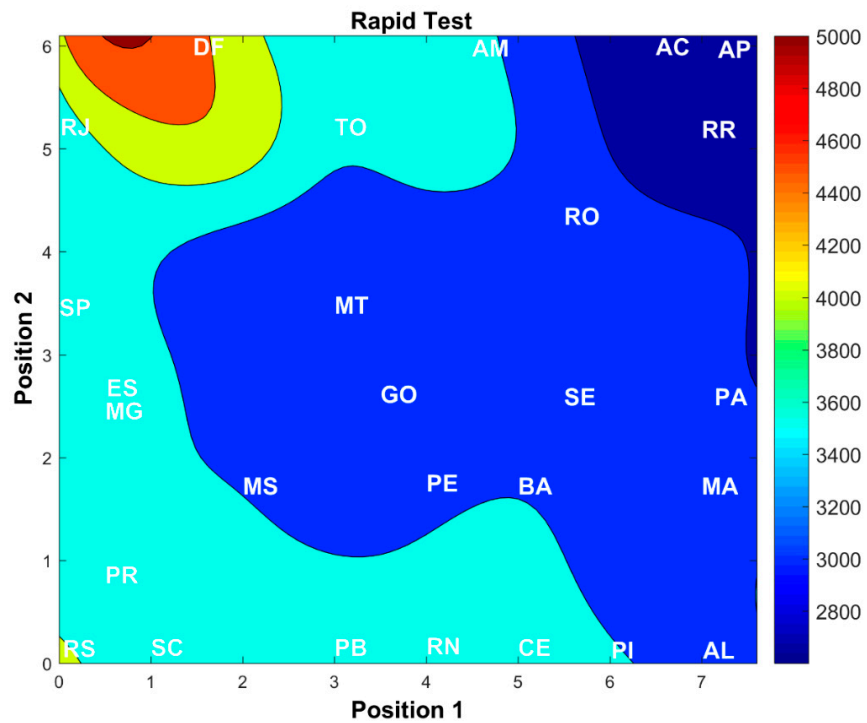


Figure S7 – Weight maps overlaid by topological maps for variable **Rapid test** by Brazilian federative unit.

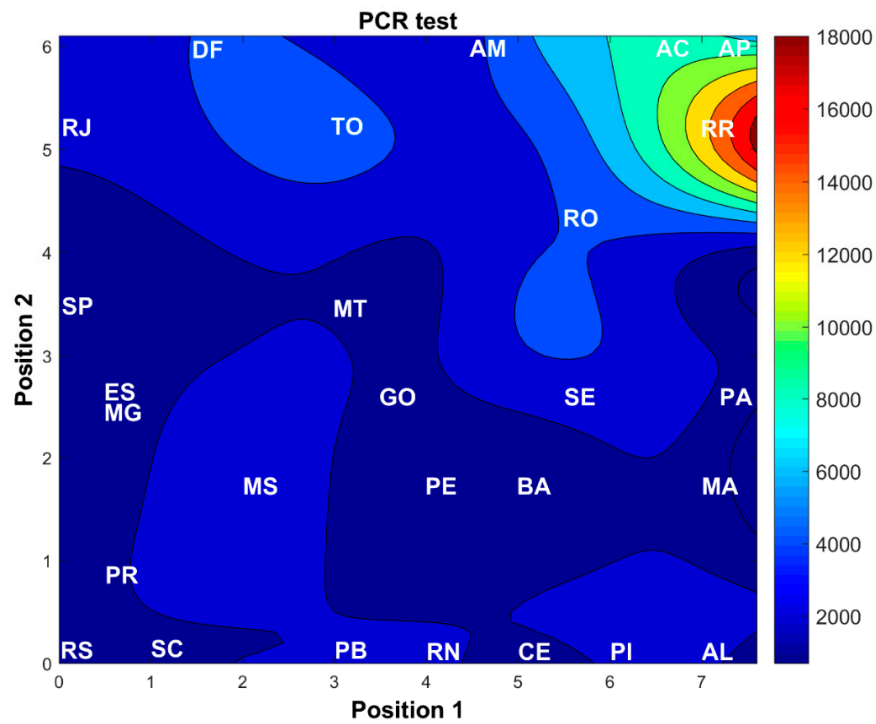


Figure S8 – Weight maps overlaid by topological maps for variable **PCR test** by Brazilian federative unit.

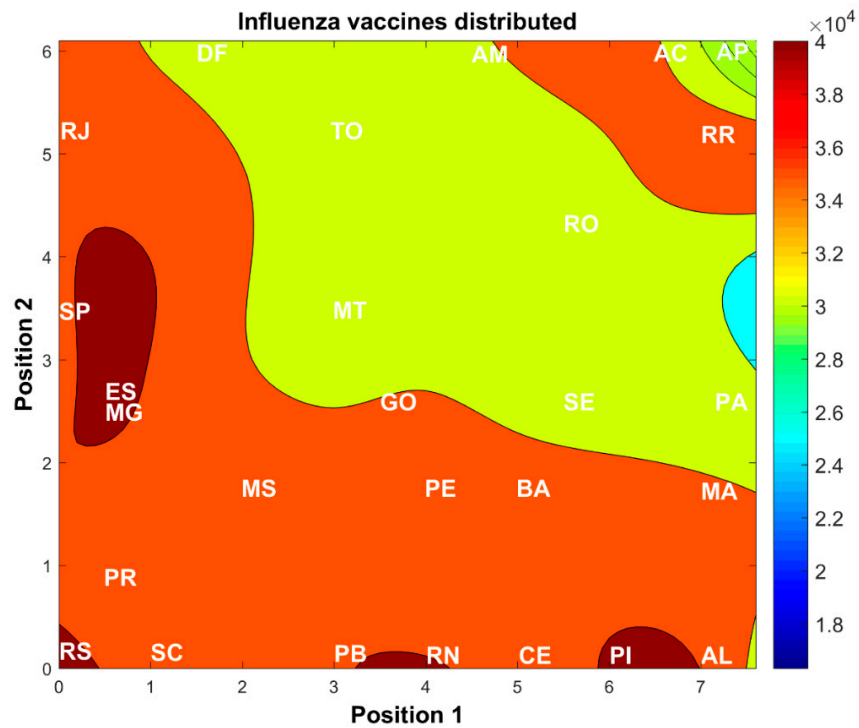


Figure S9 – Weight maps overlaid by topological maps for variable **Influenza vaccines distributed** by Brazilian federative unit.

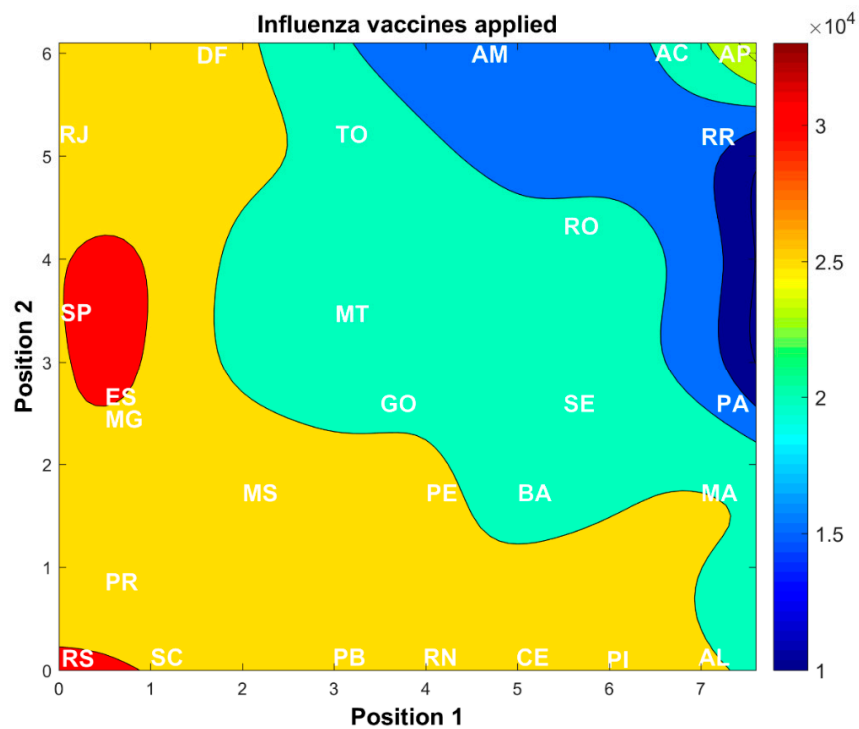


Figure S10 – Weight maps overlaid by topological maps for variable **Influenza vaccines applied** by Brazilian federative unit.

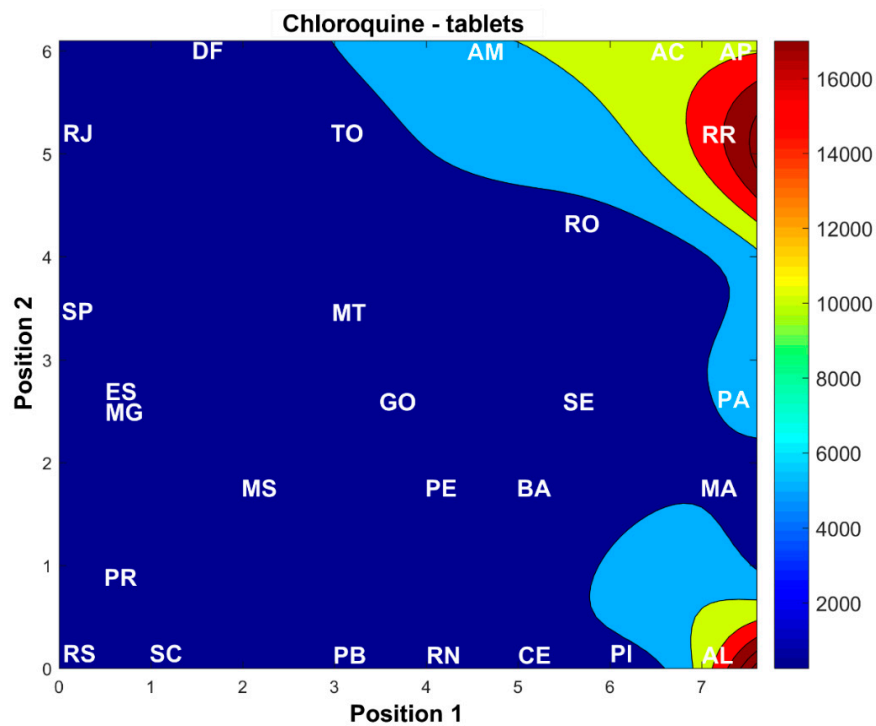


Figure S11 – Weight maps overlaid by topological maps for variable **Chloroquine tablets** by Brazilian federative unit.

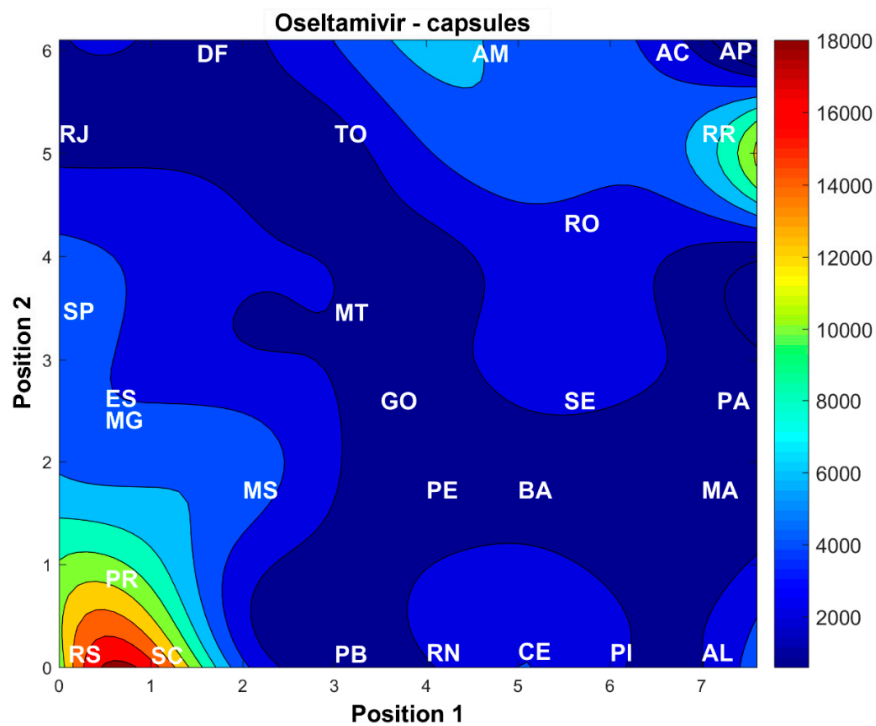


Figure S12 – Weight maps overlaid by topological maps for variable **Oseltamivir capsules** by Brazilian federative unit.

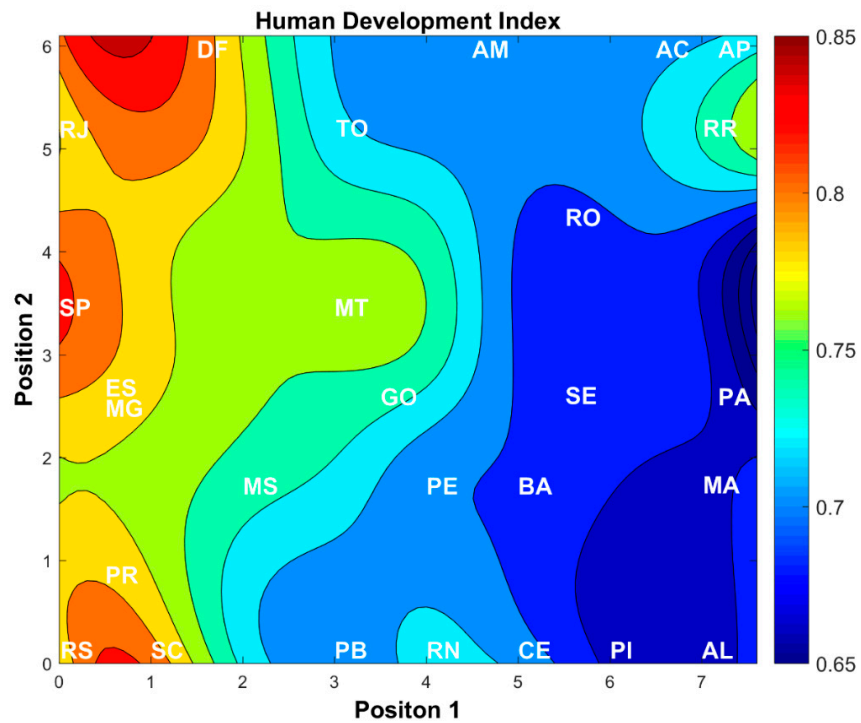


Figure S13 – Weight maps overlaid by topological maps for variable **Human Development Index (HDI)** by Brazilian federative unit.

