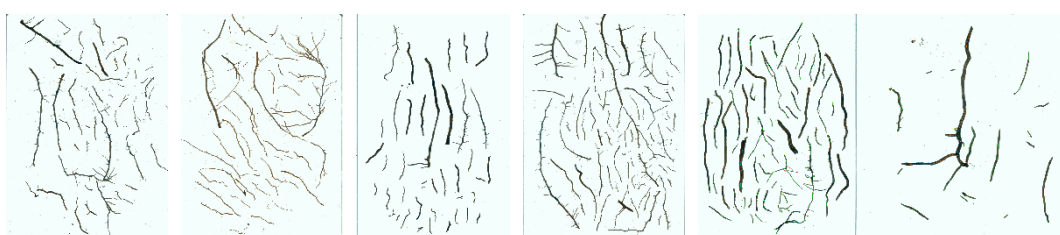




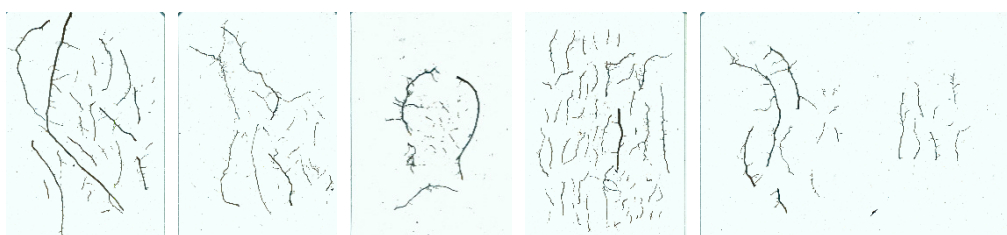
Article

Influence of Heterogeneous Karst Microhabitats on the Root Foraging Ability of Chinese Windmill Palm (*Trachycarpus fortunei*) Seedlings

Yingying Liu, Xiaoli Wei *, Zijing Zhou, Changchang Shao and Shicheng Su



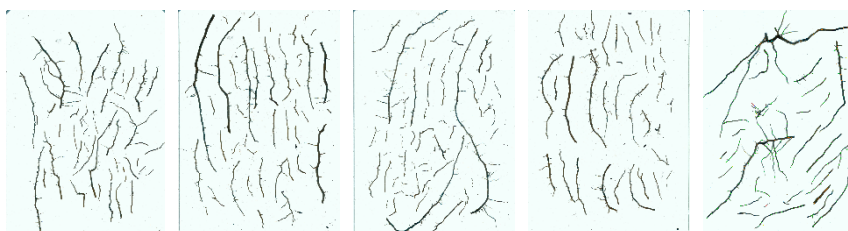
I-1 I-2 I-3 I-4 I-5



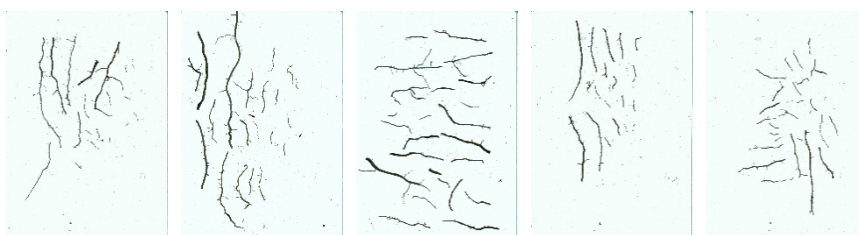
II-1 II-2 II-3 II-4 II-5



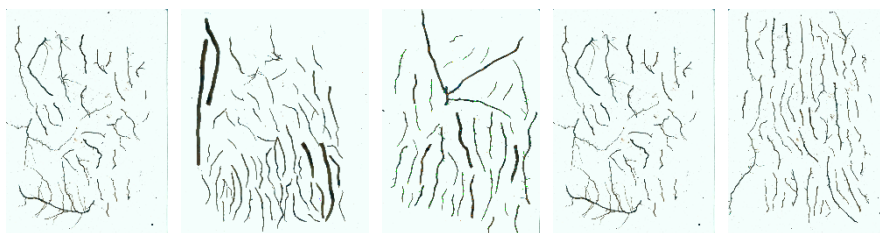
III-1 III-2 III-3 III-4 III-5



IV-1 IV-2 IV-3 IV-4 IV-5



V-1 V-2 V-3 V-4 V-5



VI-1 VI-2 VI-3 VI-4 VI-5

Figure S1. Scanning pictures of new roots. Rocky trough (I), Rocky surface (II), Rocky gully (III), Rocky soil surface (IV), Rocky pit (V), Soil surface (VI); Lowercase Arabic numerals represent duplicates.



© 2020 by the authors. Submitted for possible open access publication under the terms and conditions of the Creative Commons Attribution (CC BY) license (<http://creativecommons.org/licenses/by/4.0/>).