

Supplemental Material:

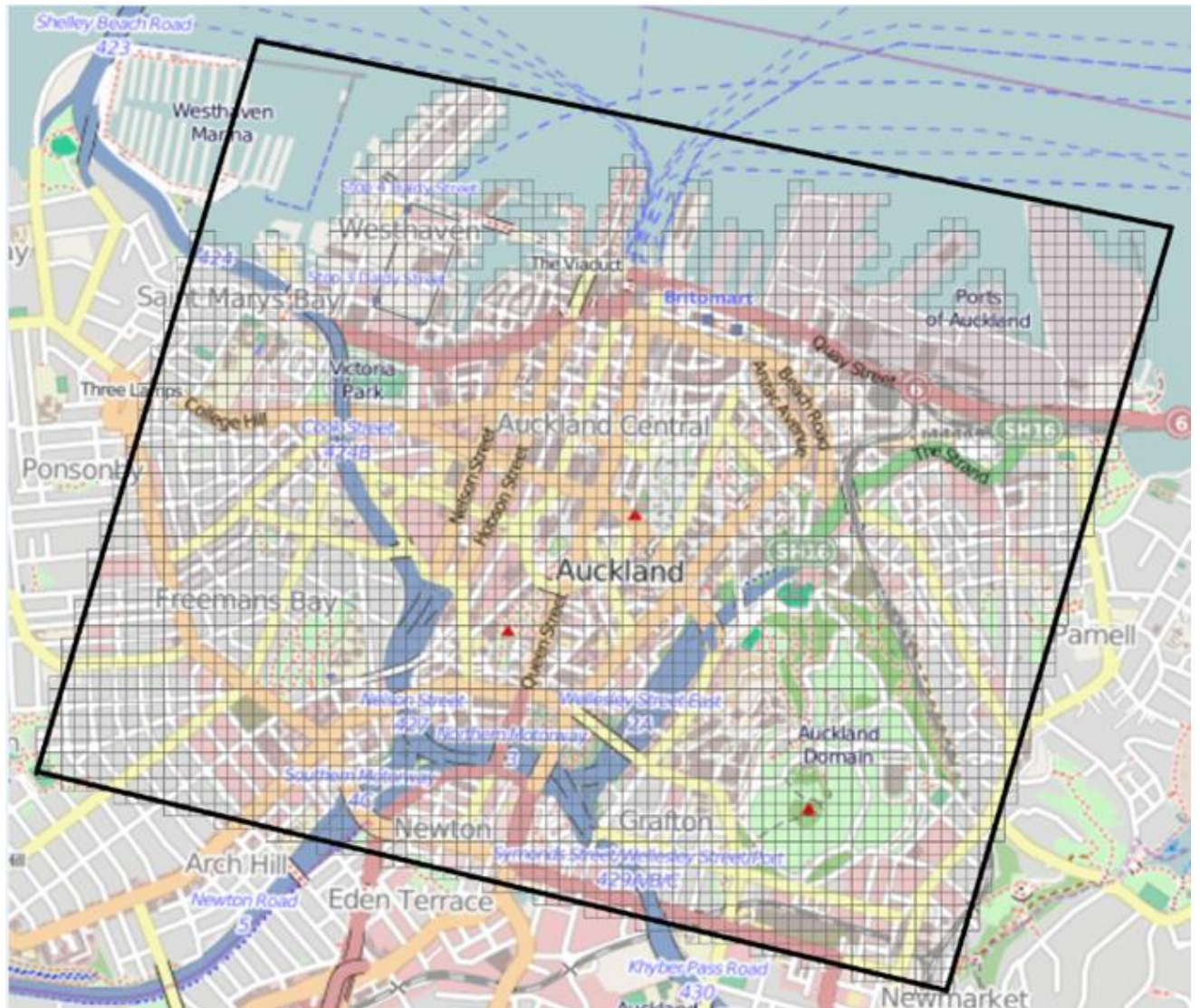


Figure S1. 50 × 50 m grid used for site classification in GIS.

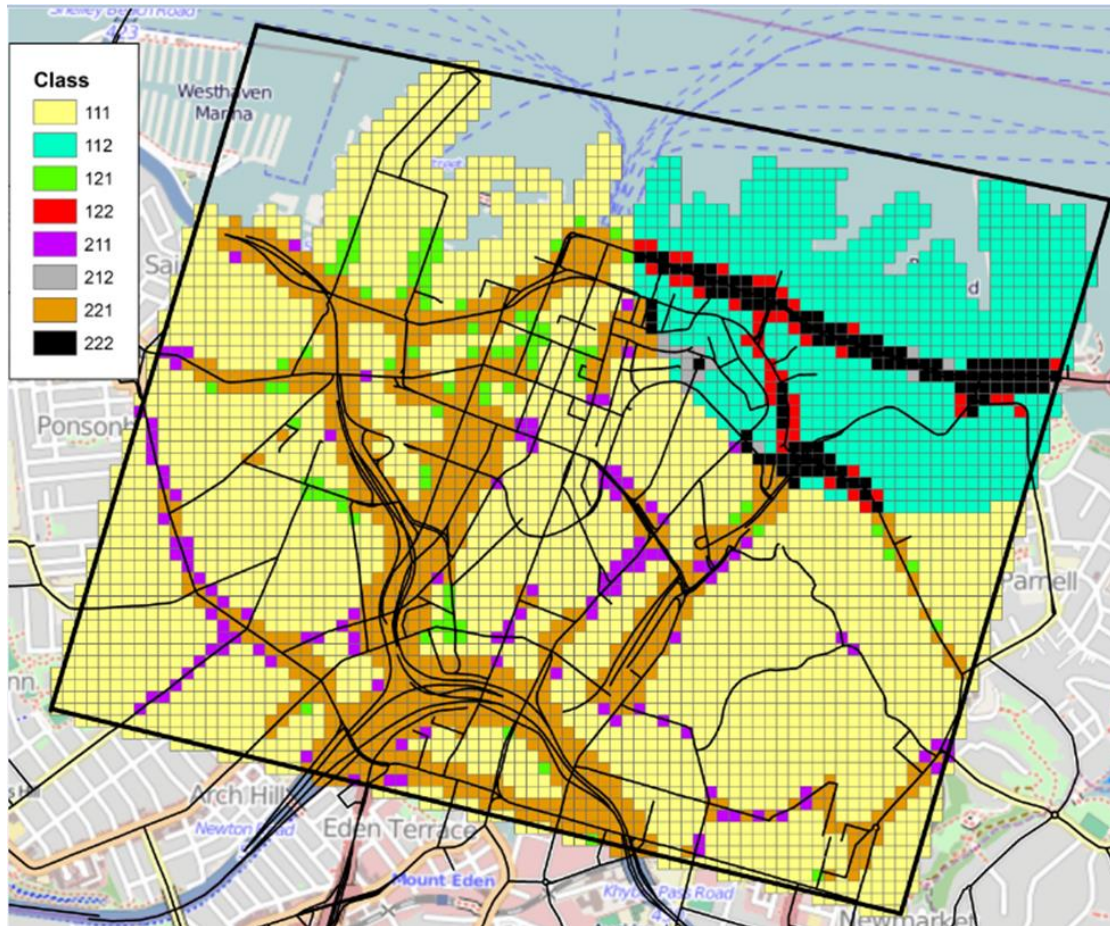
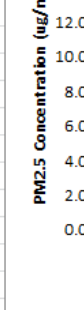


Figure S2. Source classification map used for site selection. Numerical class categories refer to (in order): Total traffic density, truck density, distance to port (1 = low, 2 = high, in all cases).



sessions.

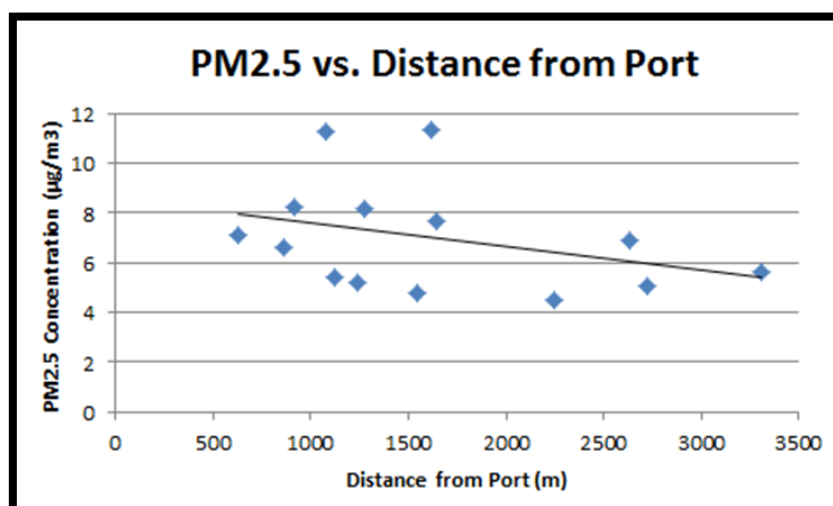
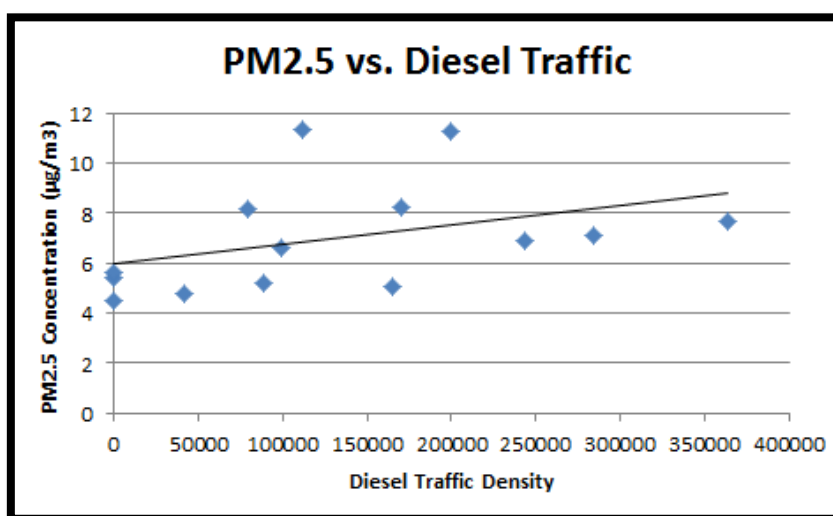
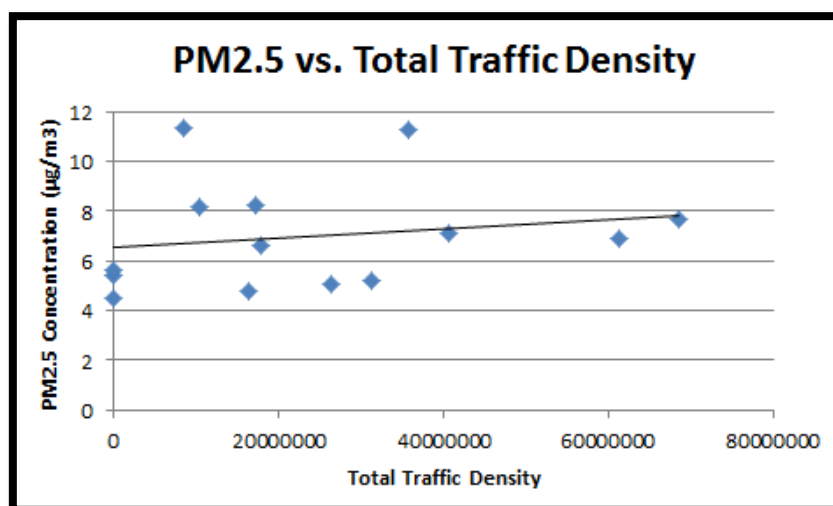


Figure S4. Scatterplots of temporally-adjusted PM_{2.5} concentrations vs. source classes.

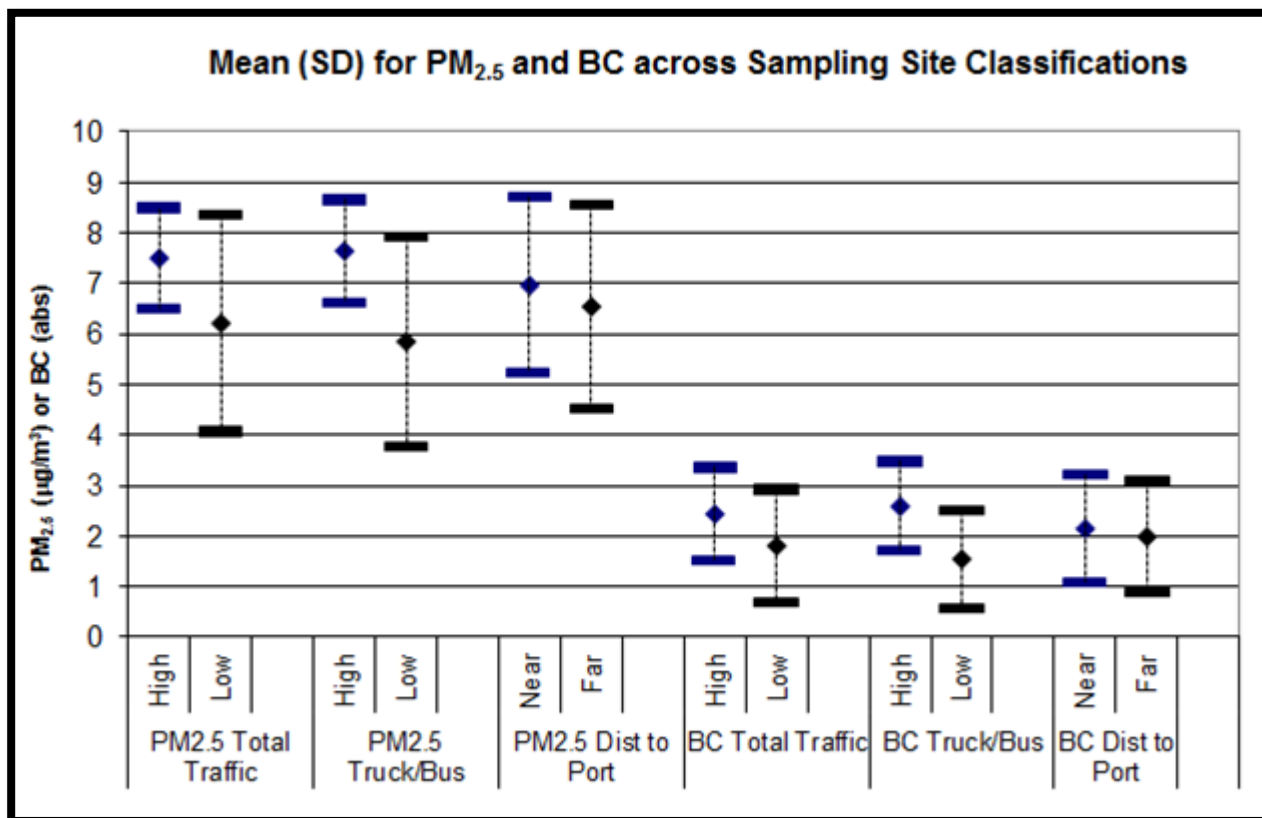


Figure S5. Boxplots of PM_{2.5} and BC concentrations by source category (Total traffic density, truck density, distance to port). In all cases, we found non-normal distributions in concentrations, and slightly higher average concentrations in the high-source category.

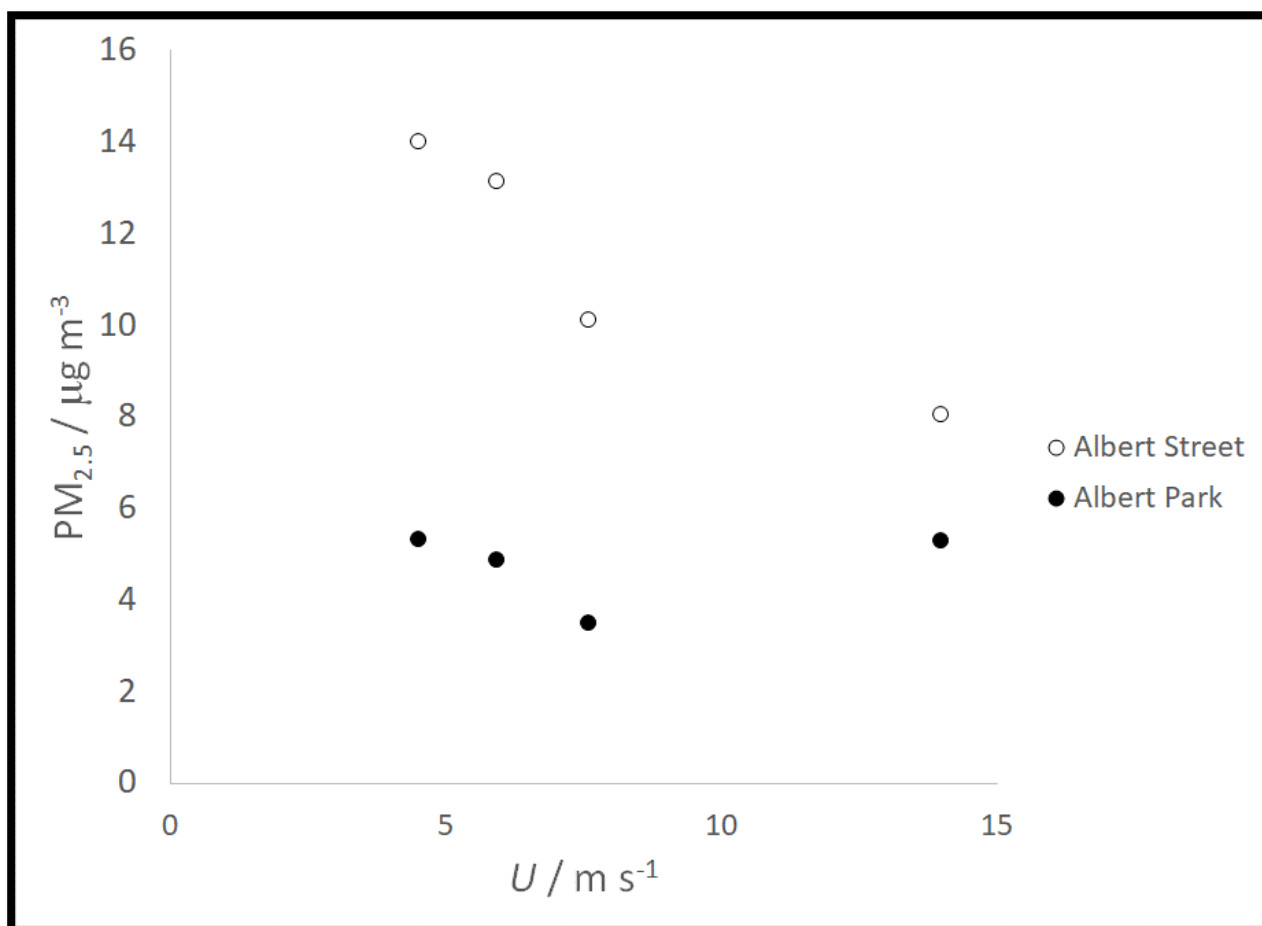


Figure S6. PM_{2.5} concentration vs. windspeed, across sessions, at two reference sites (Albert St is a low-elevation street canyon in the center of CBD; Albert Park is a high-elevation green park adjacent to the CBD).