

## Supplementary Materials

### **The Antimicrobial Peptide LJ-hep2 from *Lateolabrax japonicus* Exerting Activities against Multiple Pathogenic Bacteria and Immune Protection In Vivo**

**Ruihao Gong**<sup>1,†</sup>, **Zhe An**<sup>1,†</sup>, **Weibin Zhang**<sup>1</sup>, **Fangyi Chen**<sup>1,2,3</sup> and **Ke-Jian Wang**<sup>1,2,3,\*</sup>

<sup>1</sup> State Key Laboratory of Marine Environmental Science, College of Ocean & Earth Sciences, Xiamen University, Xiamen 361102, Fujian, China

<sup>2</sup> State-Province Joint Engineering Laboratory of Marine Bioproducts and Technology, College of Ocean & Earth Sciences, Xiamen University, Xiamen 361102, Fujian, China

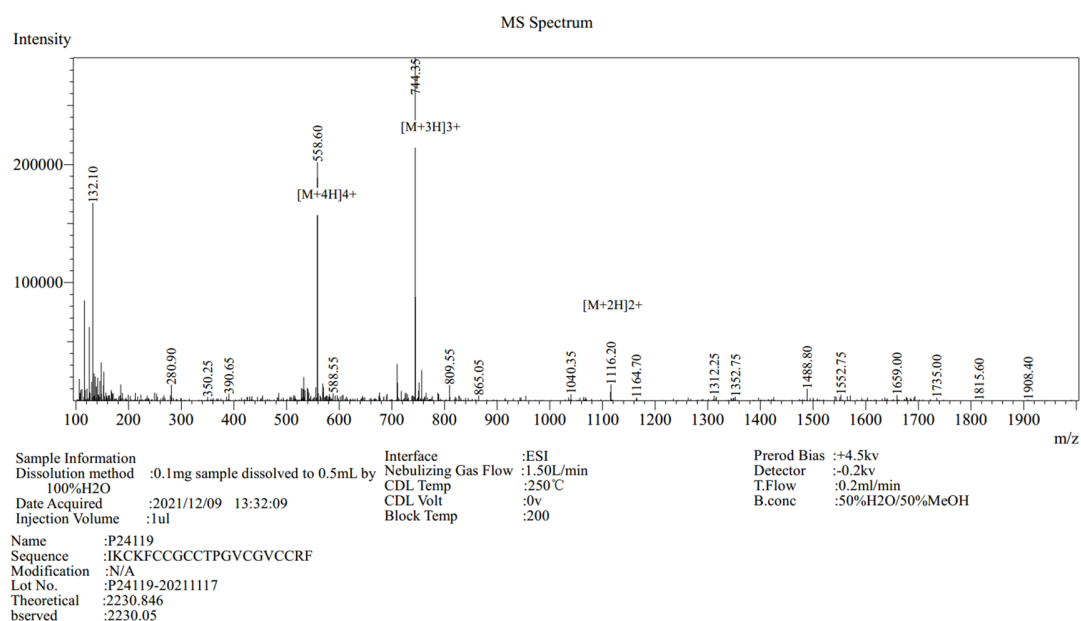
<sup>3</sup> Fujian Innovation Research Institute for Marine Biological Antimicrobial Peptide Industrial Technology, College of Ocean & Earth Sciences, Xiamen University, Xiamen 361102, China

† These authors contributed equally to this work.

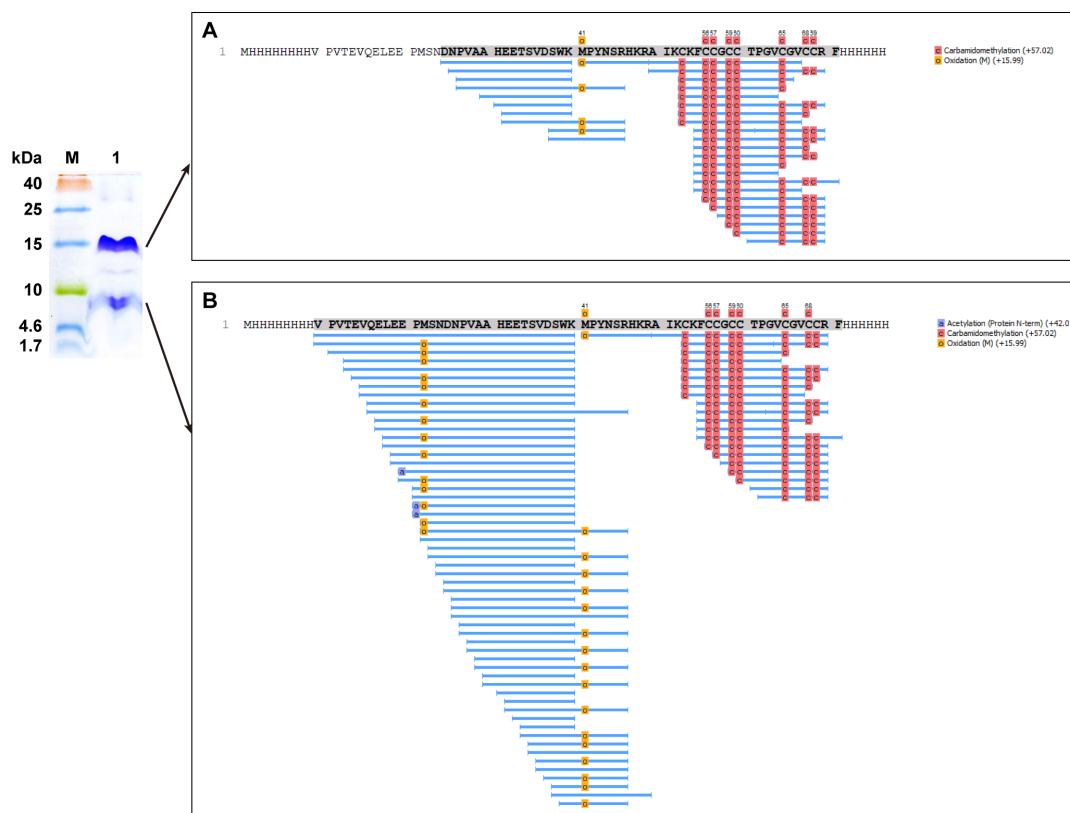
\* Corresponding author: Ke-Jian Wang (K.-J. Wang)

College of Ocean & Earth Sciences, Xiamen University, Xiamen 361102, Fujian, PR China.

E-mail: wkjian@xmu.edu.cn



**Figure S1.** The mass spectrometry analysis of the chemically synthesized peptide LJ-hep<sub>2(66-86)</sub>. The MS analysis result showed the information of the peptide, including the sequence, the theoretical and observed molecular weight.



**Figure S2.** The mass spectrometry analysis of the two bands of rLJ-hep<sub>2</sub>. A: the coverage result of the peptide with molecular mass of about 15 kDa. B: the coverage result of the peptide with molecular mass of about 8 kDa.