

Supplementary materials

Table S1. The Physicochemical Characteristics of CS-NPs prepared by using different concentration of the CS.

C _{CS} (mg/mL)	MHD \pm SD (nm)	PDI	ζ -pot \pm SD (mv)	EE \pm SD (%)	LC (%)
1	90 \pm 1	0.18	20 \pm 1	37 \pm 1	59 \pm 1
1.5	101 \pm 2	0.19	22 \pm 1.5	41 \pm 2	49 \pm 1
2	115 \pm 1	0.19	20 \pm 0.2	49 \pm 0.2	30 \pm 0.5
2.5	123 \pm 3	0.18	19 \pm 1	52 \pm 1	24 \pm 1
3	128 \pm 2	0.16	18 \pm 1	66 \pm 1	24 \pm 1

CS concentration = 1mg/ml.

Results were reported as mean \pm SD, n=3.

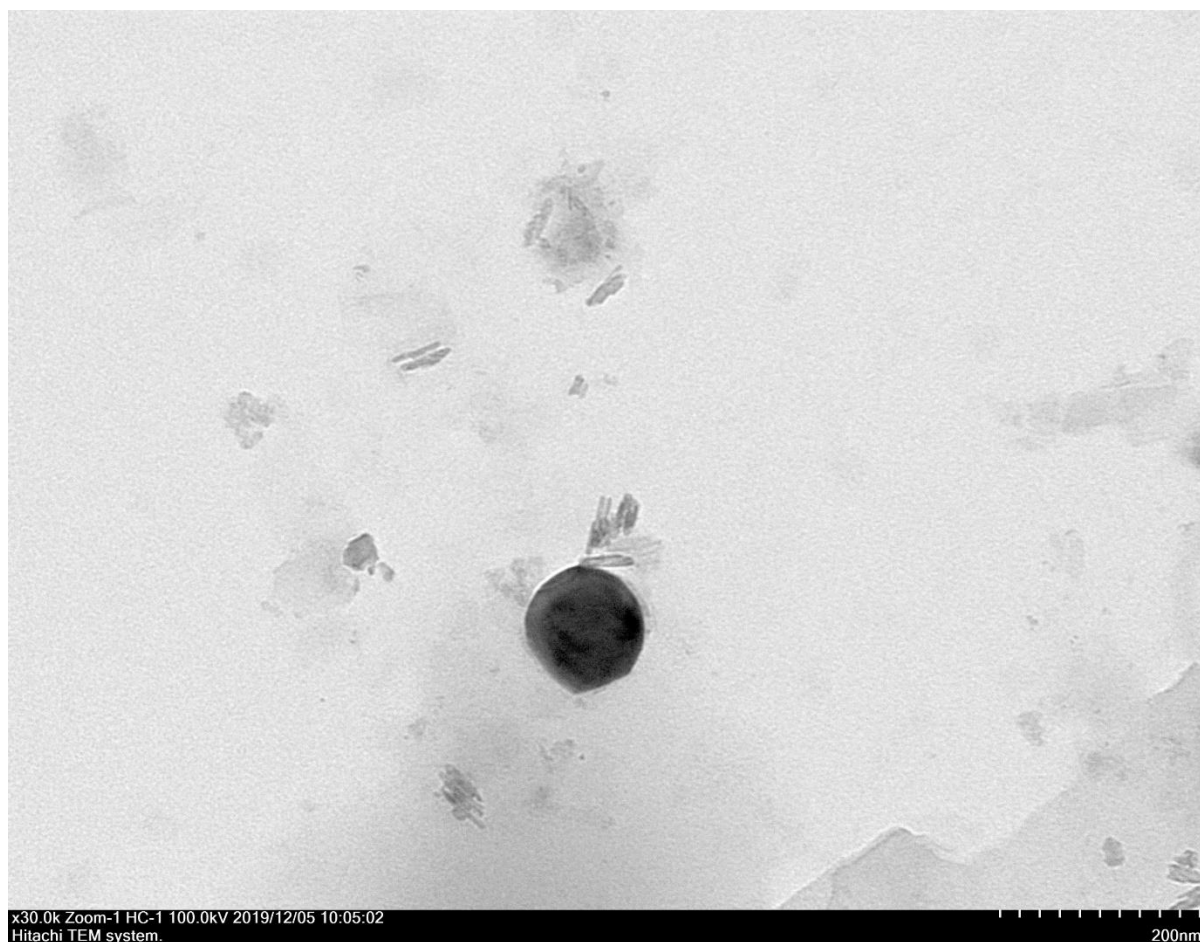


Figure S1. TEM image of BSA-loaded NPs.

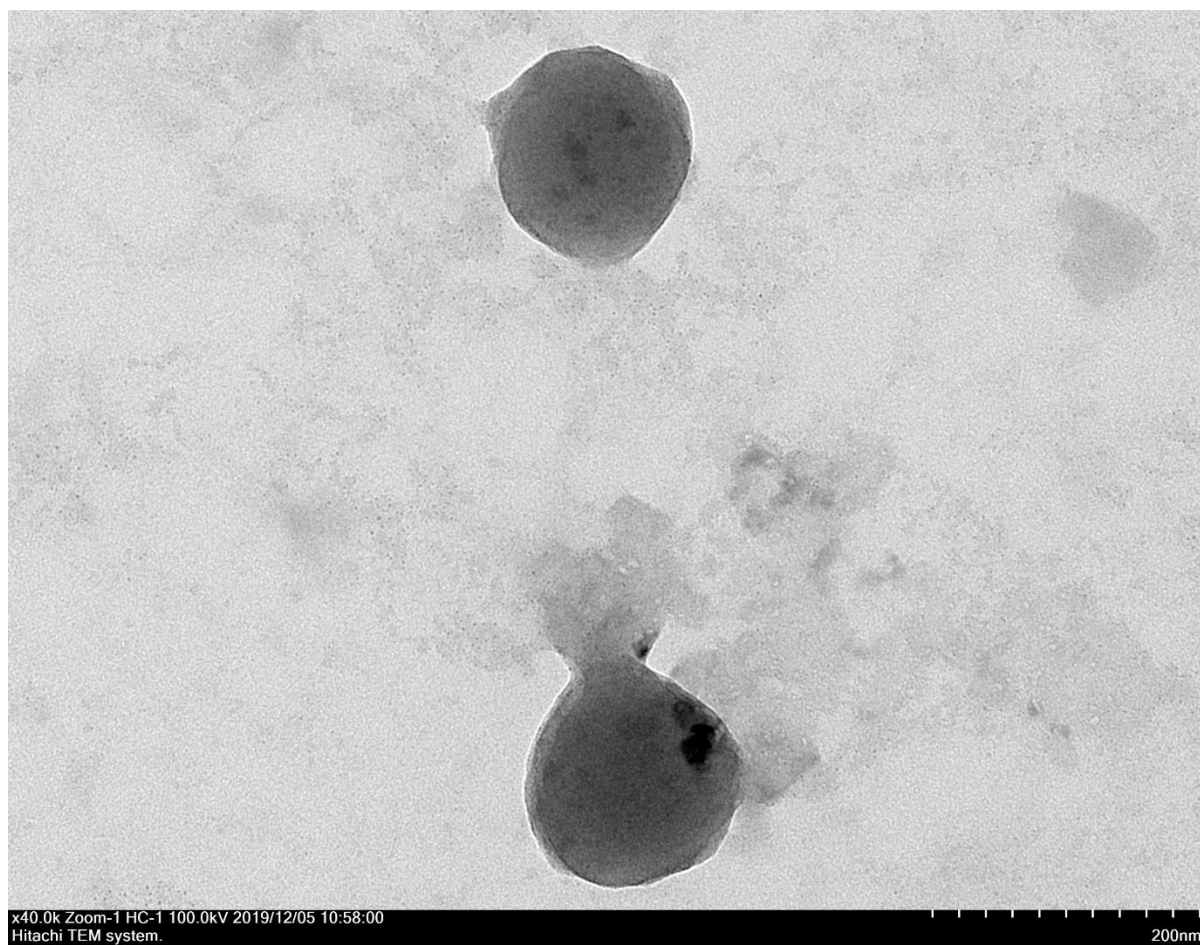


Figure S2. TEM image of re-dissolved BSA-loaded NPs.