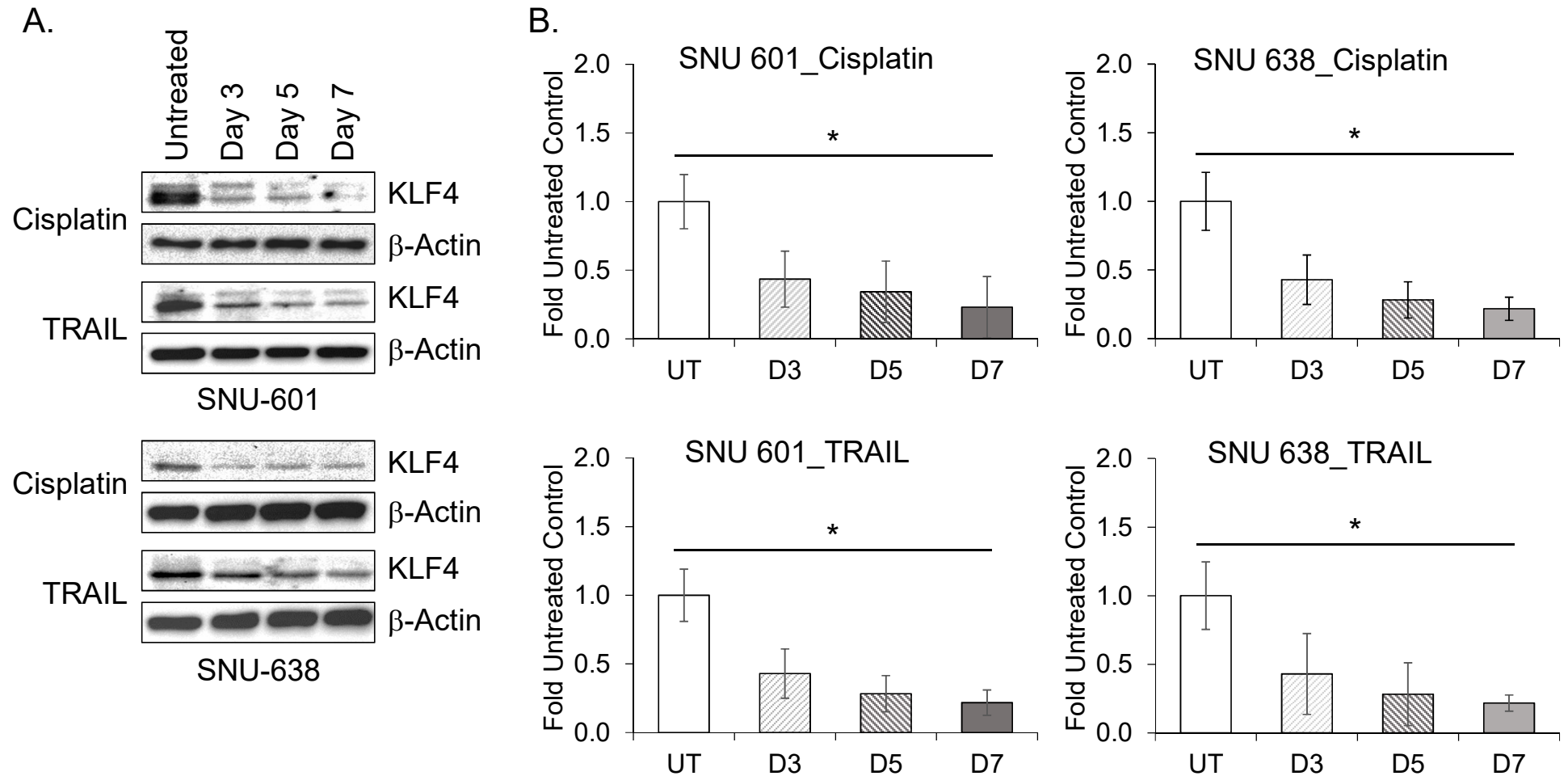
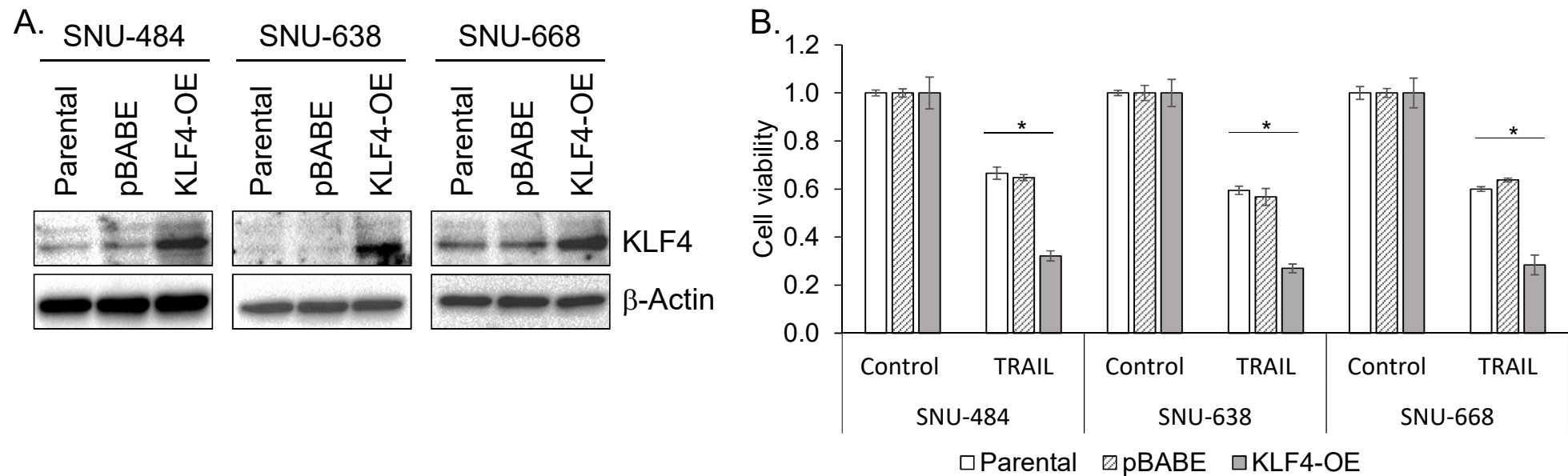


Supplemental Figure S1. Expression of KLF4 in SNU-601 and SNU-638 treated with cisplatin or TRAIL for seven days.



A. KLF4 expression in SNU-601 and SNU-638 treated with cisplatin (0.5 $\mu\text{g/ml}$) or TRAIL (50 ng/ml) for indicated period were examined by western blotting. **B.** Quantified results were normalized against β -Actin level and fold increase over untreated control is shown in mean \pm SD of three independent experiments. * represents $p < 0.05$.

Supplemental Figure S2. Modulation of TRAIL response by overexpression of KLF4 in SNU-484, SNU-638 and SNU-668



A. Overexpression of KLF4 by retroviral transduction of KLF4 cDNA (KLF-OE) in SNU-484, SNU-638 and SNU-668 was verified by western blotting. **B.** Cell viability of the KLF4-overexpressing cells treated with cisplatin (0.5 μ g/ml) or TRAIL (50 ng/ml) for three days was measured by MTT assay. Data shown are relative viability normalized against untreated parental cells in mean \pm SD of three independent experiments. * represents $p < 0.05$.