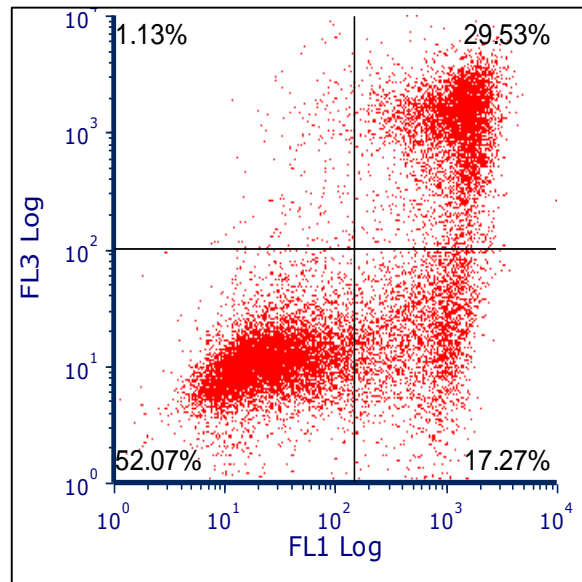
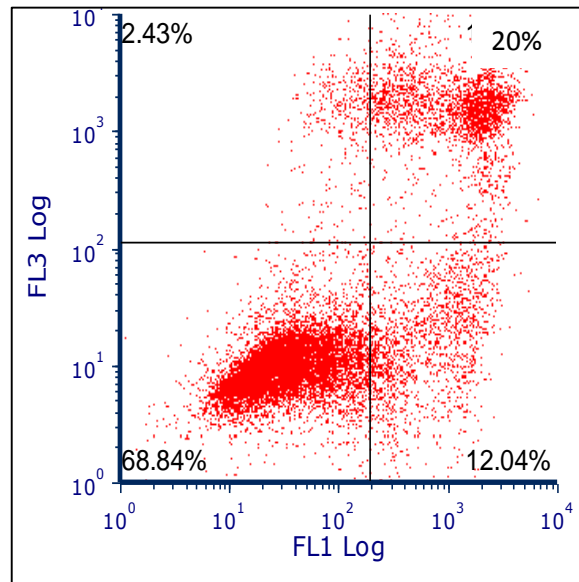
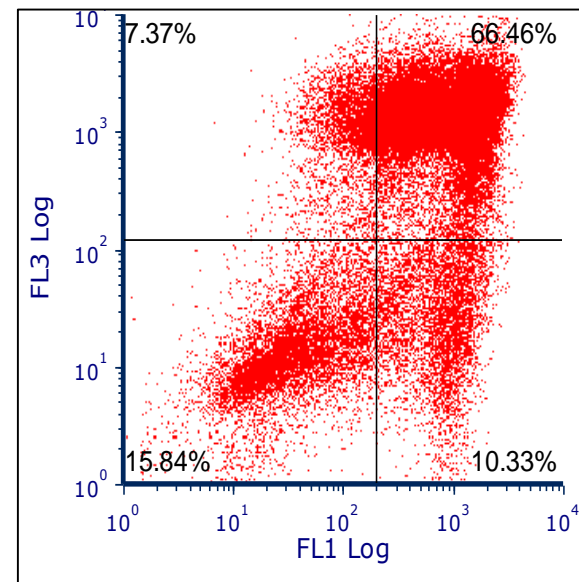
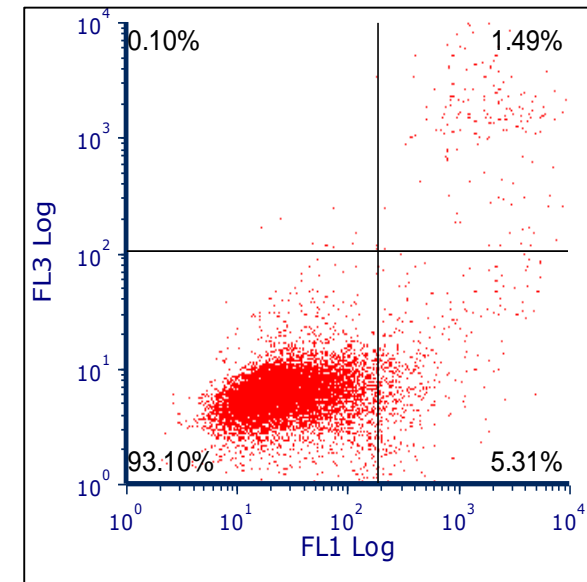
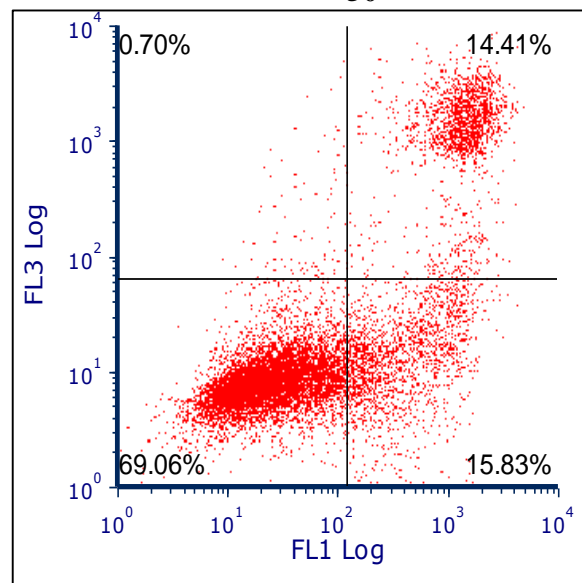
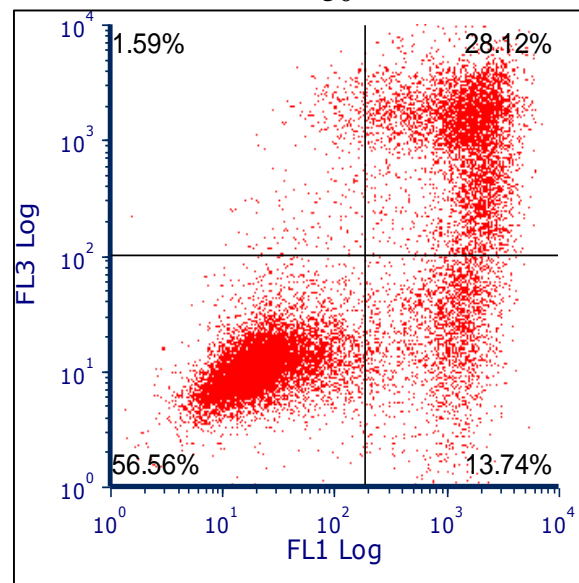
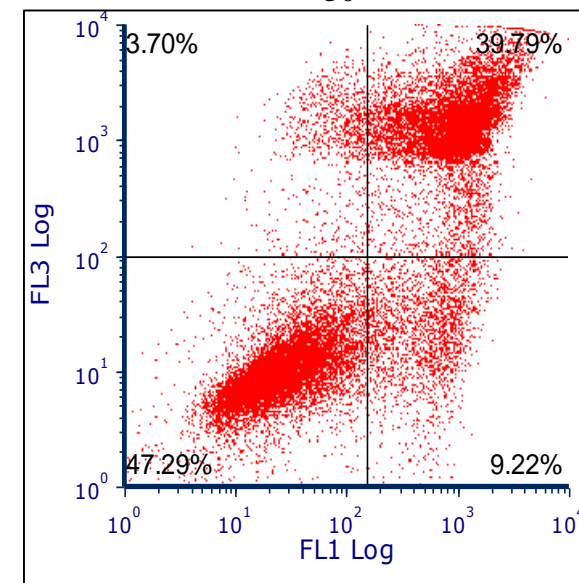
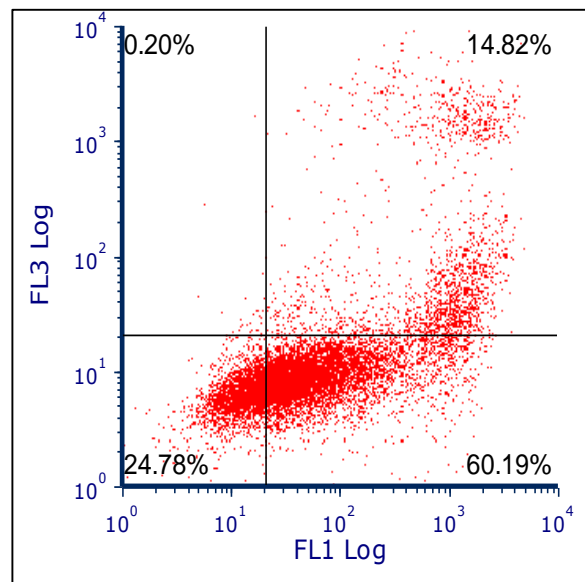
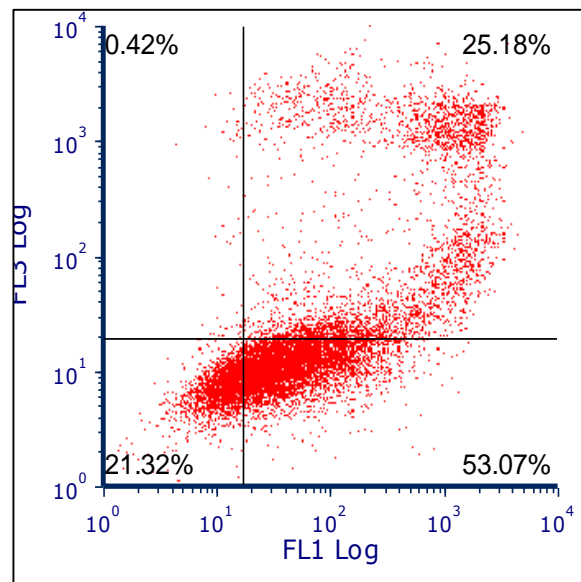
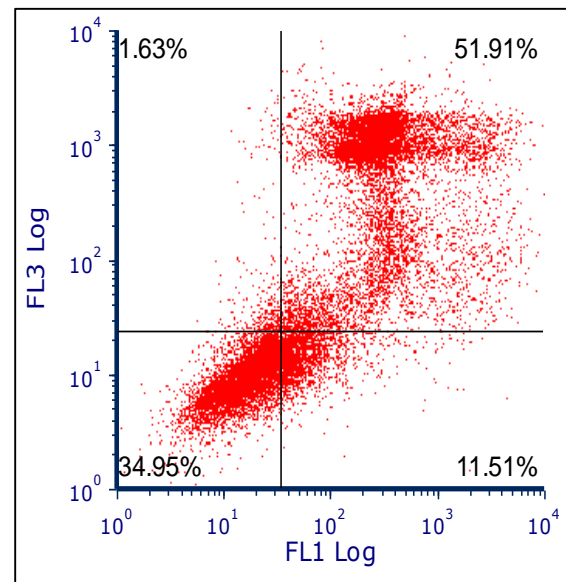
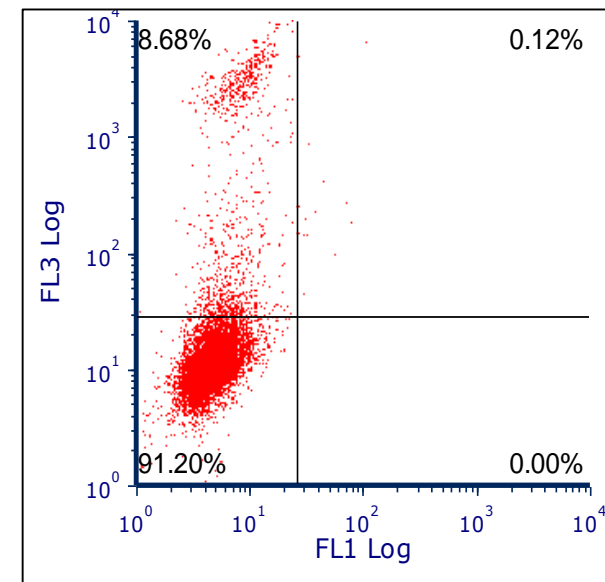
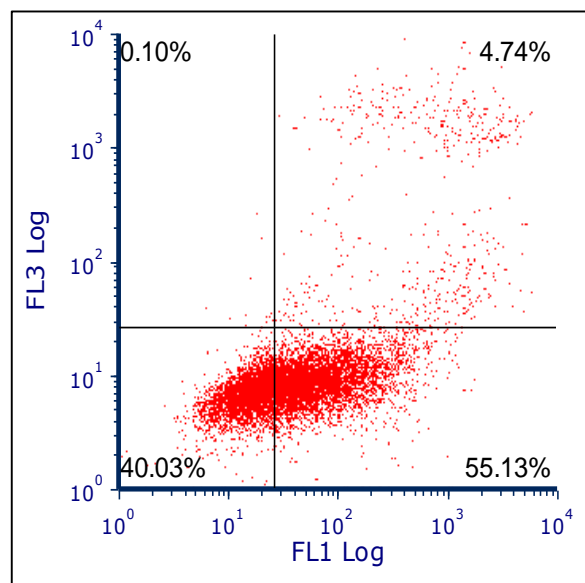
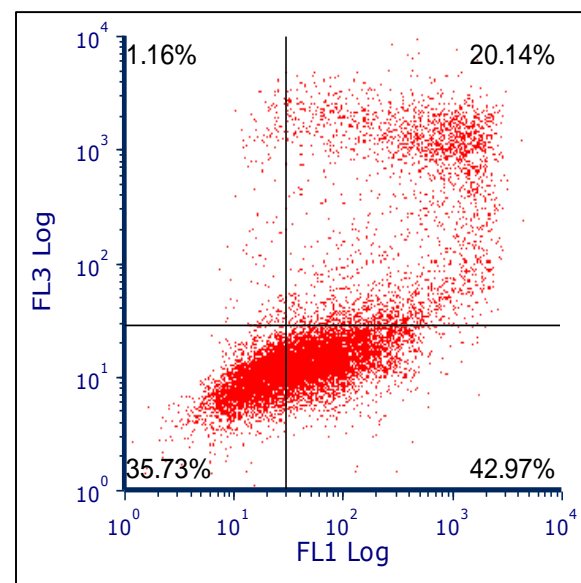
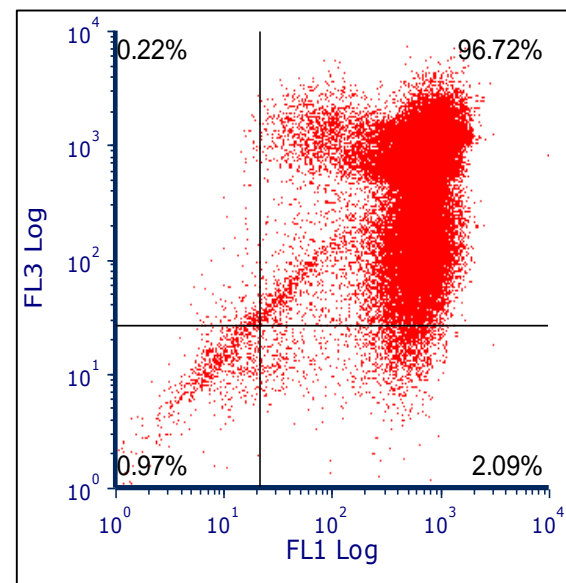


# Supplementary Materials (Fig. S3) – Apoptosis

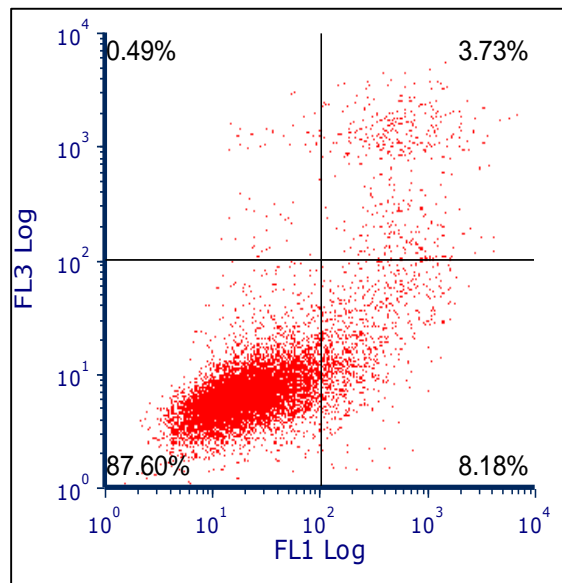
Flow cytometric analysis of cell death mechanism (Apoptosis/Necrosis) in human melanoma MDA-MB435 cells, treated with **MS47** and **MS49** of  $0.5 \times \text{GI}_{50}$ ,  $1 \times \text{GI}_{50}$  and  $2 \times \text{GI}_{50}$  concentrations compared to the untreated cells (control group) and stained with FITC-conjugated annexin V and propidium iodide (PI) for (A) 24 h (B) 48 h and (C) 72 h.

**A)****MS47 ( $0.5 \times \text{GI}_{50}$ )****MS47 ( $1 \times \text{GI}_{50}$ )****MS47 ( $2 \times \text{GI}_{50}$ )****Control****MS49 ( $0.5 \times \text{GI}_{50}$ )****MS49 ( $1 \times \text{GI}_{50}$ )****MS49 ( $2 \times \text{GI}_{50}$ )**

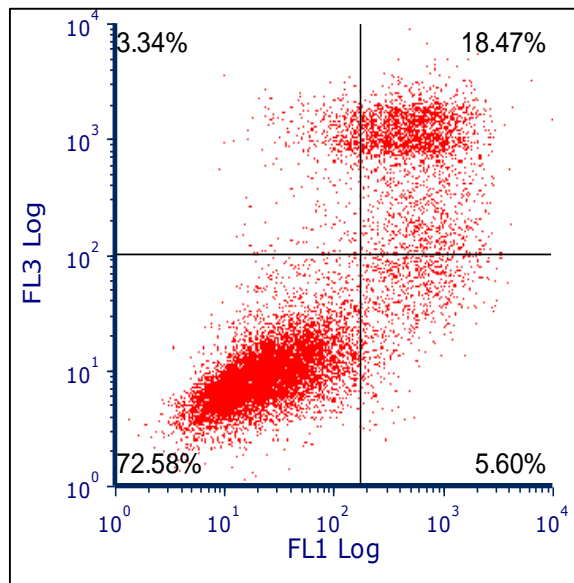
**B)****MS47 ( $0.5 \times \text{GI}_{50}$ )****MS47 ( $1 \times \text{GI}_{50}$ )****MS47 ( $2 \times \text{GI}_{50}$ )****Control****MS49 ( $0.5 \times \text{GI}_{50}$ )****MS49 ( $1 \times \text{GI}_{50}$ )****MS49 ( $2 \times \text{GI}_{50}$ )**

c)

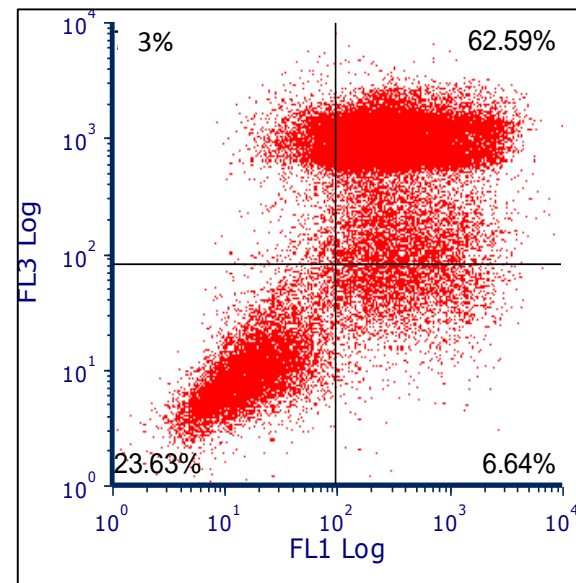
**MS47 ( $0.5 \times GI_{50}$ )**



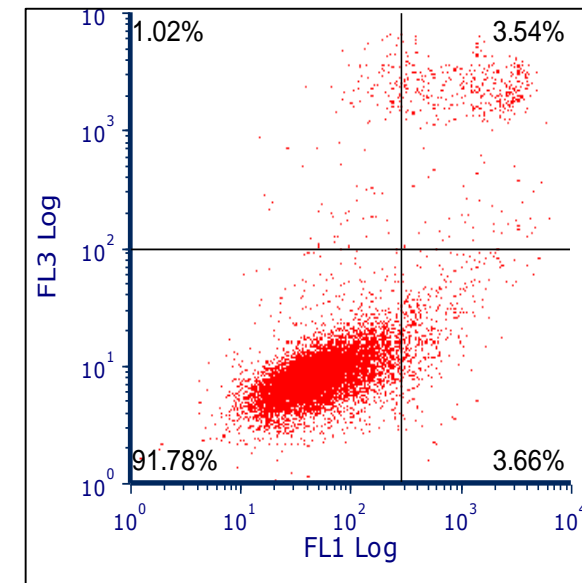
**MS47 ( $1 \times GI_{50}$ )**



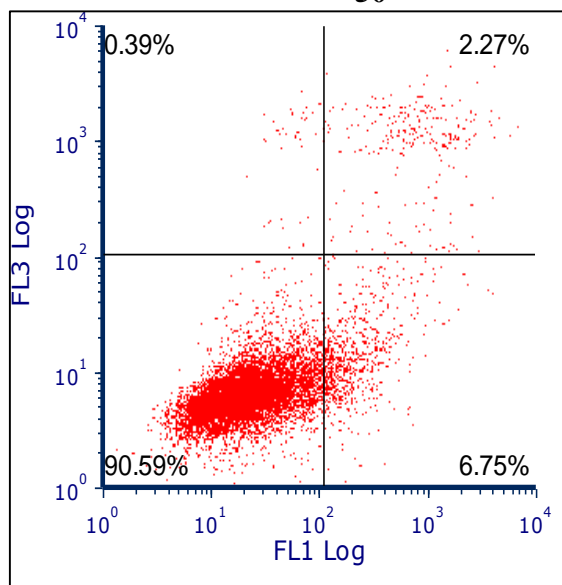
**MS47 ( $2 \times GI_{50}$ )**



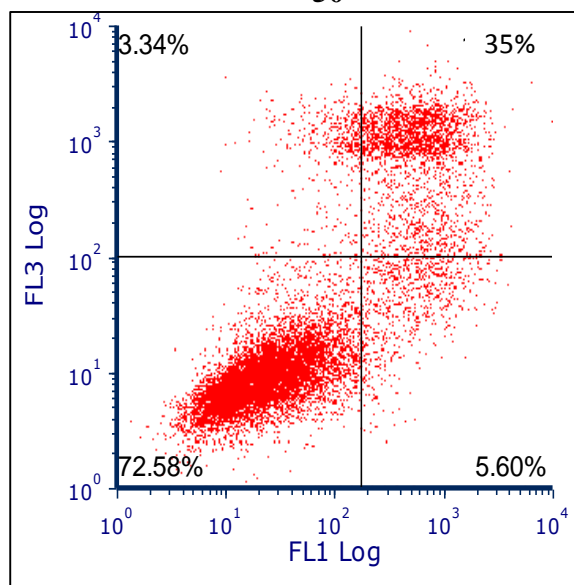
**Control**



**MS49 ( $0.5 \times GI_{50}$ )**



**MS49 ( $1 \times GI_{50}$ )**



**MS49 ( $2 \times GI_{50}$ )**

