

Methodology

The total RNA from kidney samples was purified using TRIzol's Reagent (Life Technologies, USA). In a two-step RT-PCR experiment, 1 µg of total RNA was reverse-transcribed into single-stranded complementary DNA using the QuantiTects Reverse Transcription Kit (Qiagen, USA) and a random primer hexamer. Maximas SYBR Green/Fluorescein qPCR Master Mix was used to amplify C-DNA amplicons through specific primers.

Table S1. Beclin1, p62, ATG5, LC3II genes primer sequences.

| Gene | primer sequences | References |
|----------|---|---------------------------------------|
| Beclin-1 | 5'-ATACTGTTCTGGGGGTTTGCG-3' 5'-GTCTCTCCTTTTCCACCTCTTC-3'. | (Liu, Huang, Liu, Song, & Xiao, 2020) |
| P62 | 5'- AGG GAA CAC AGC AAG CT -3' 5'- GCC AAA GTG TCC ATG TTT CA -3' | (Crippa et al., 2013) |
| GAPDH | 5'-TGACAACTTTGGTATCGTGGAAGG-3'; 5'-AGGCAGGGATGATGTTCTGGAGAG-3'. | (Yang, Yu, Liu, Yang, & Tao, 2020) |
| LC3II | 5'-AACATGAGCGAGTTGGTCAAG-3'; 5'-GCTCGTAGATGTCCGCGAT-3'; | |
| ATG5 | 5'CCAAGCTTCTAATACGACTCACTATAGG GAGAATGACAGATGACAAAGATGTGC-3' 5'-TCAATCTGTTGGCTGGGGGACA-3' | (Kim et al., 2014) |

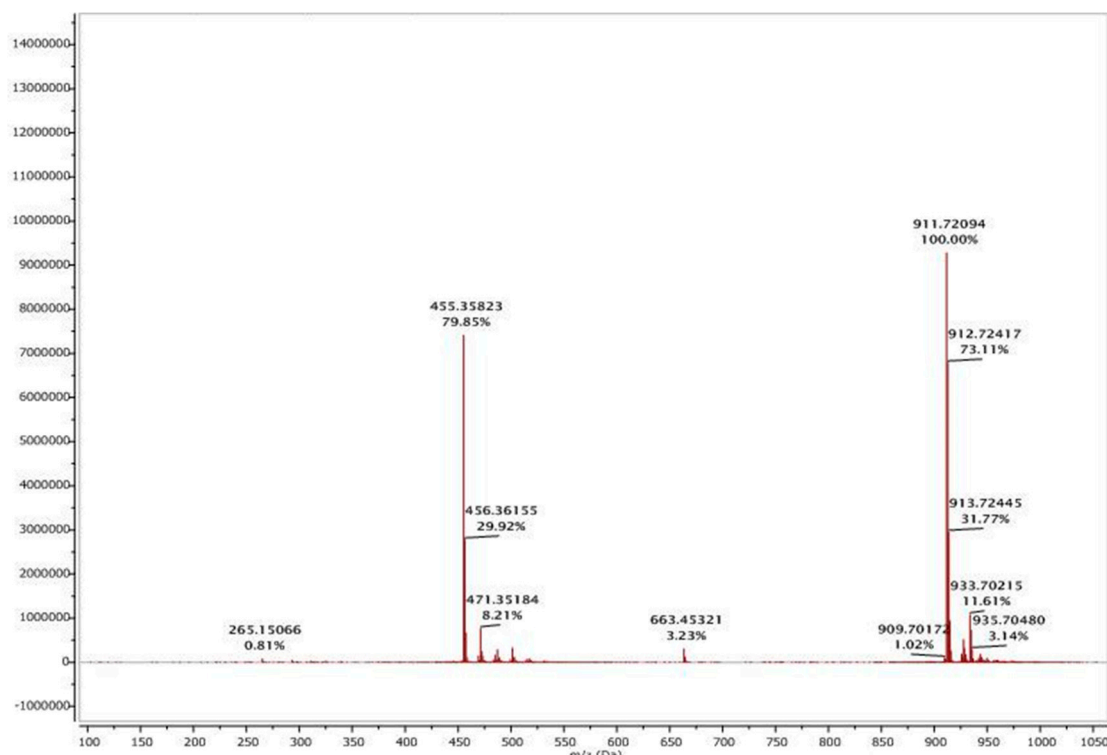


Figure S1. The HR-ESI-MS of BA.

References

- Crippa, V., Boncoraglio, A., Galbiati, M., Aggarwal, T., Rusmini, P., Giorgetti, E., . . . Poletti, A. (2013). Differential autophagy power in the spinal cord and muscle of transgenic ALS mice. *Frontiers in cellular neuroscience*, 7, 234.
- Kim, C., Kim, W., Lee, H., Ji, E., Choe, Y.-J., Martindale, J. L., . . . Nam, S. W. (2014). The RNA-binding protein HuD regulates autophagosome formation in pancreatic β cells by promoting autophagy-related gene 5 expression. *Journal of Biological Chemistry*, 289(1), 112-121.
- Liu, S., Huang, X., Liu, Y., Song, D., & Xiao, Y. (2020). Functional analysis of miRNAs combined with TGF- β 1/Smad3 inhibitor in an intrauterine rat adhesion cell model. *Molecular and Cellular Biochemistry*, 470, 15-28.
- Livak, K. J., & Schmittgen, T. D. (2001). Analysis of relative gene expression data using real-time quantitative PCR and the 2- $\Delta\Delta$ CT method. *methods*, 25(4), 402-408.
- Yang, Z., Yu, W., Liu, B., Yang, M., & Tao, H. (2020). Estrogen receptor β induces autophagy of osteosarcoma through the mTOR signaling pathway. *Journal of Orthopaedic Surgery and Research*, 15, 1-7.