

Supplementary Data

Glycoconjugates of mucochloric acid – synthesis and biological activity

Katarzyna Żurawska 1,2, Daria Burdalska 1, Magdalena Skonieczna 2,3,* , Anna Byczek-Wyrostek 2, Anahit Dawicka 2,3, Anna Kasprzycka 1,2,* and Krzysztof Walczak 1

¹ Department of Organic Chemistry, Bioorganic Chemistry and Biotechnology, Faculty of Chemistry, Silesian University of Technology, Krzywoustego Street 4, 44-100 Gliwice, Poland

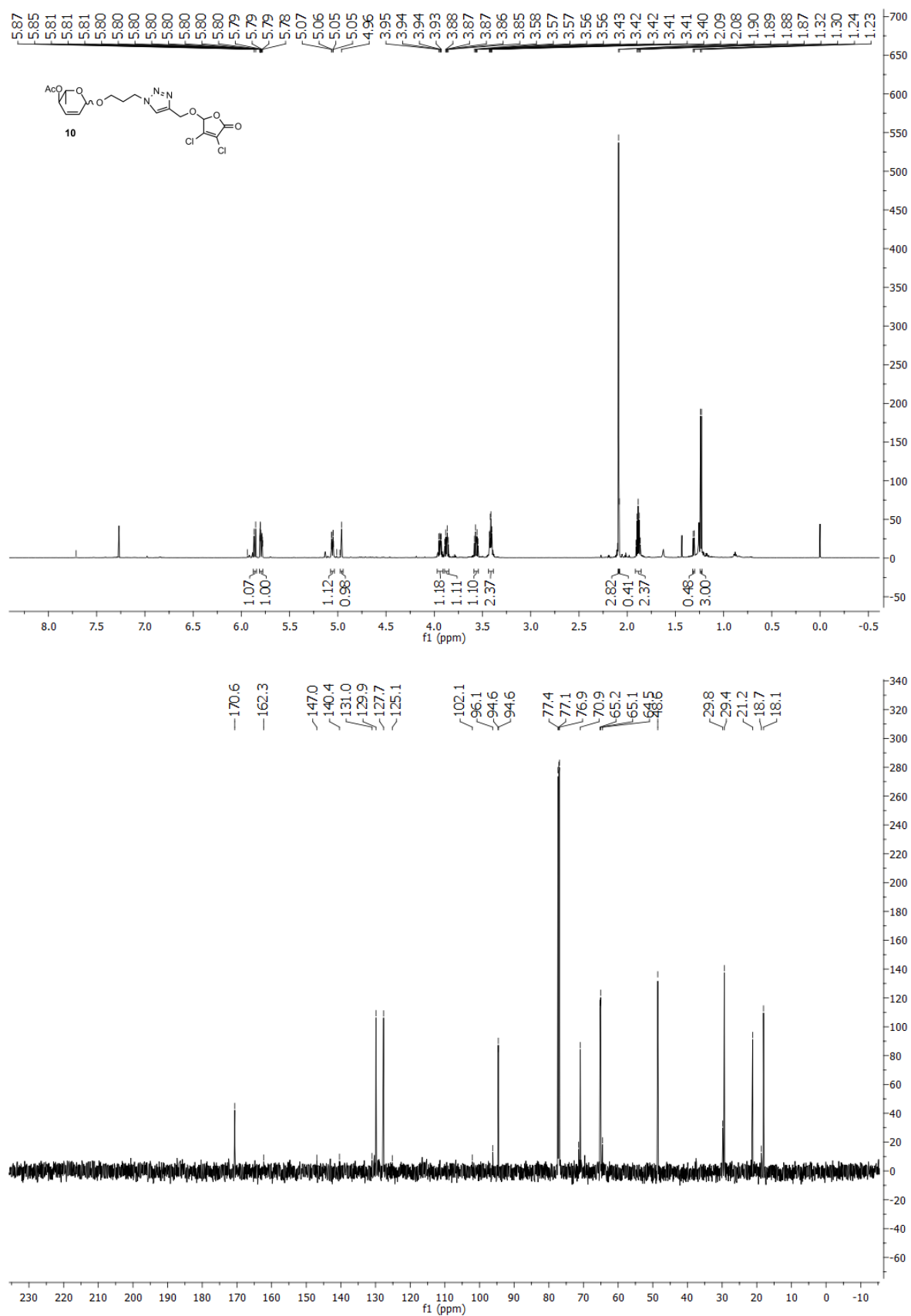
² Biotechnology Centre, The Silesian University of Technology, Krzywoustego Street 8, 44-100 Gliwice, Poland

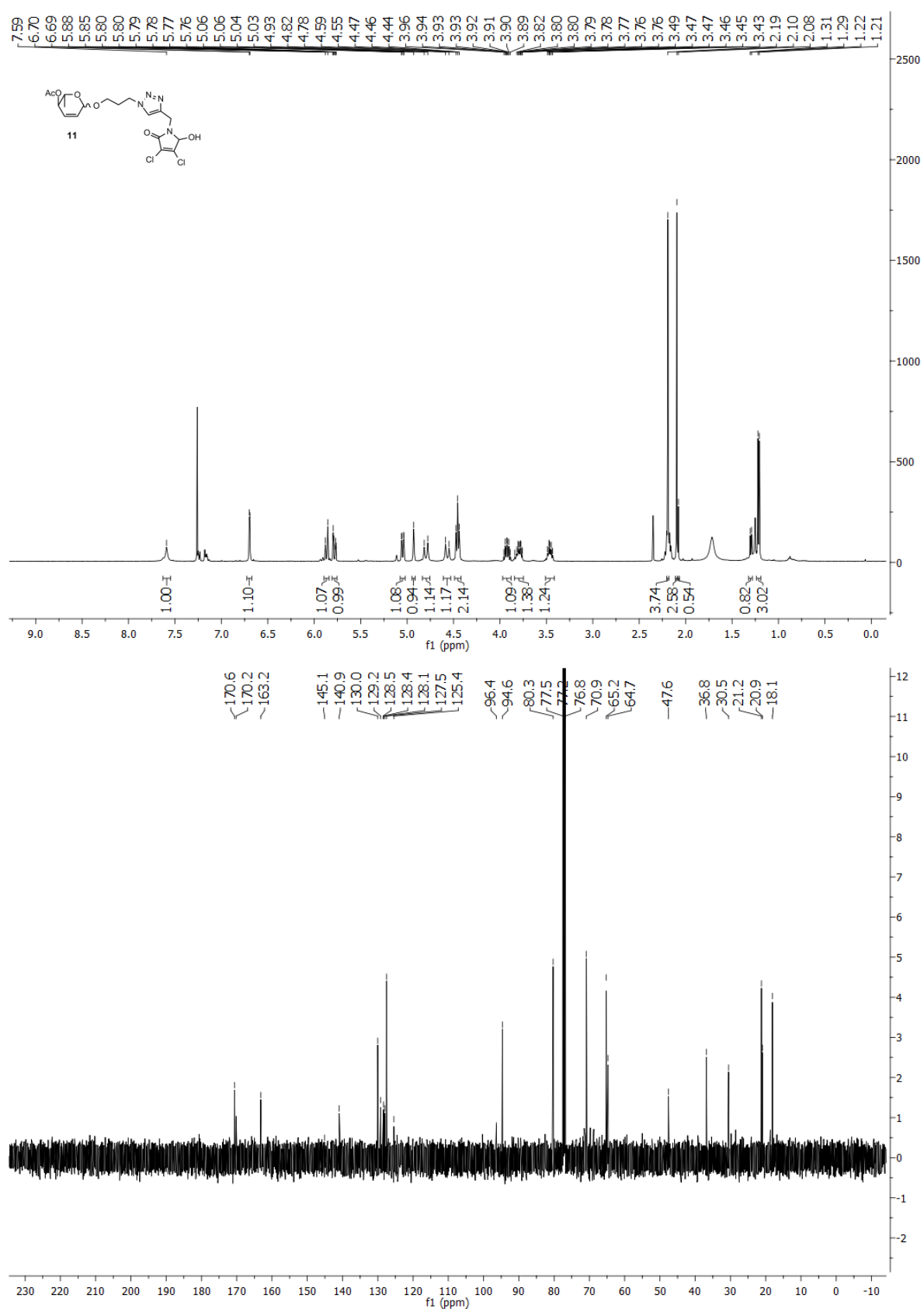
³ Department of Systems Biology and Engineering, The Silesian University of Technology, Akademicka Street 16, 44-100 Gliwice, Poland

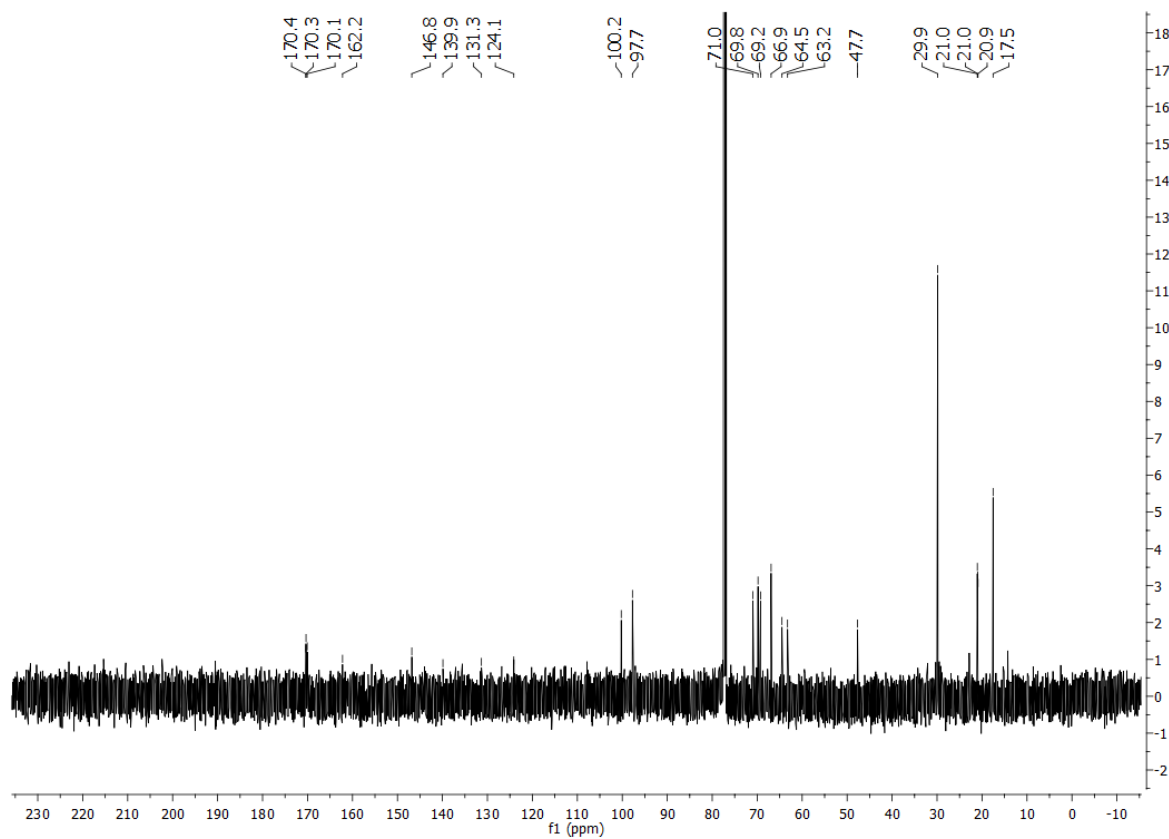
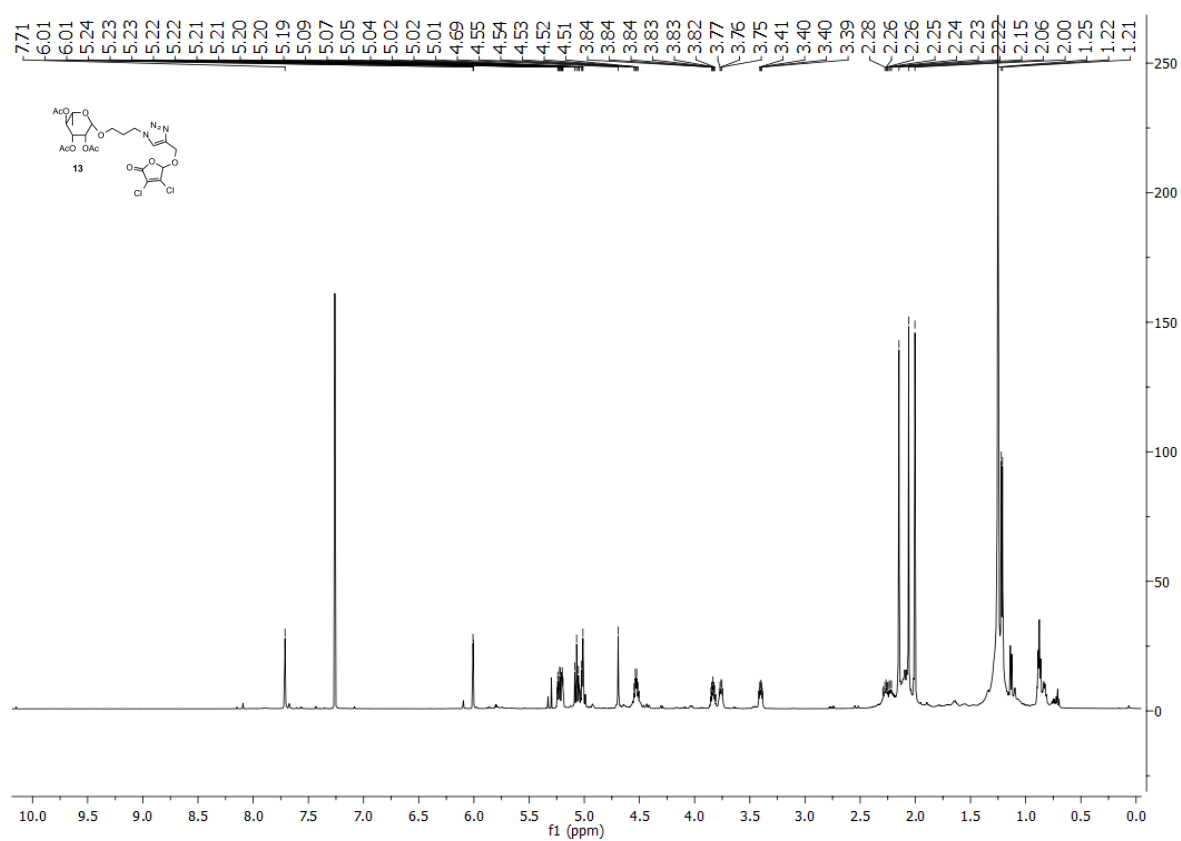
*Correspondence: magdalena.skonieczna@polsl.pl (M.S.); anna.kasprzycka@polsl.pl (A.K.)

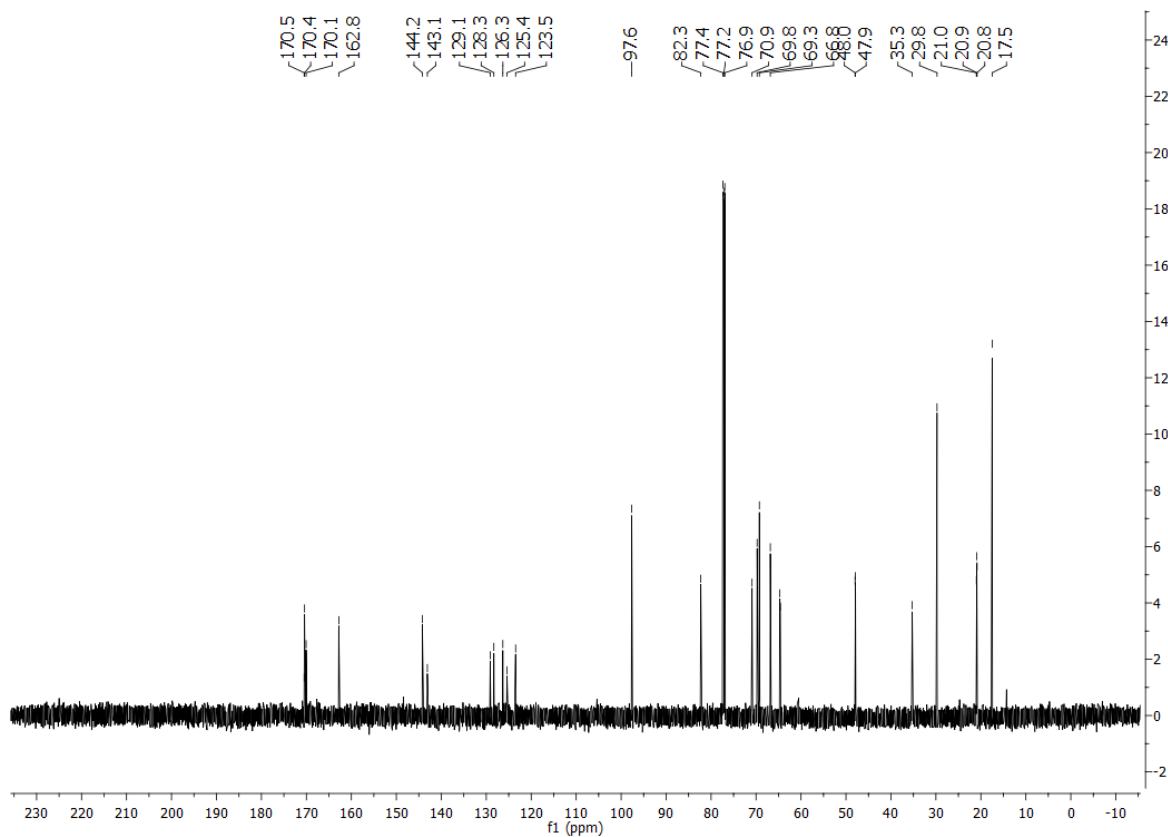
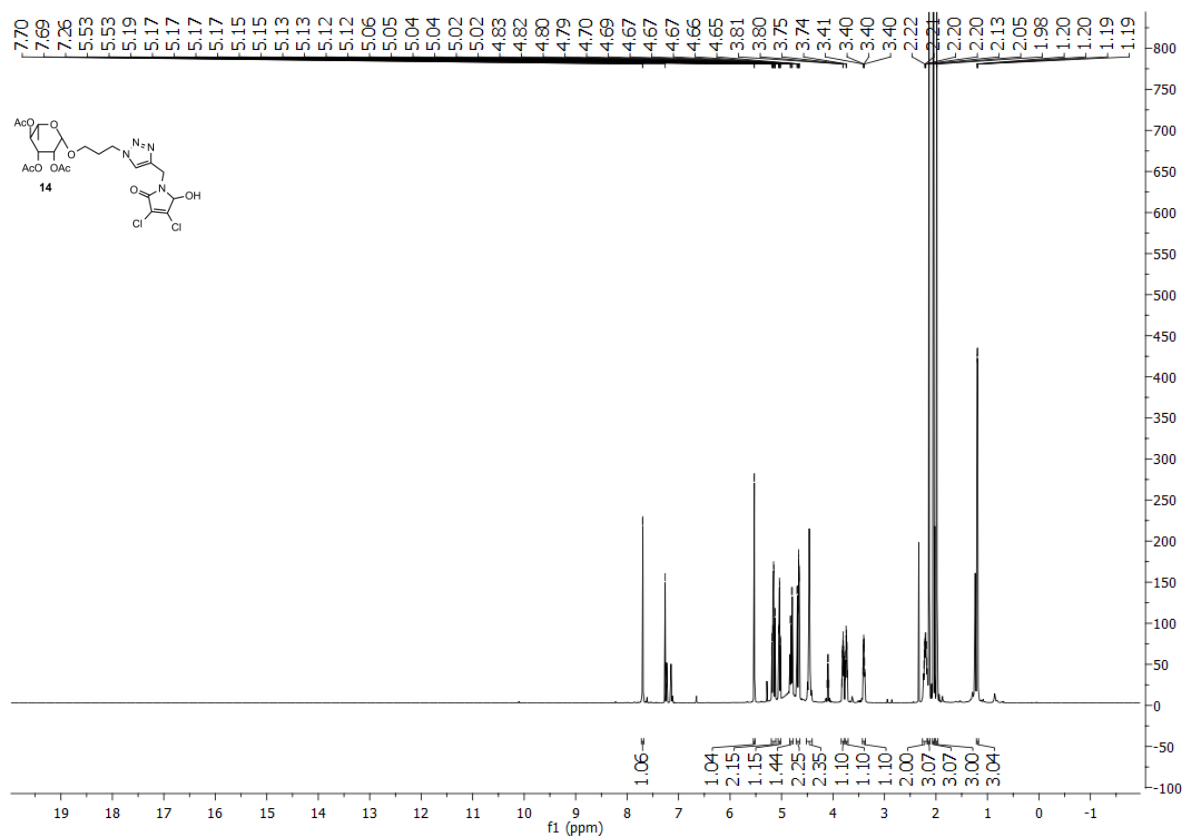
Content:

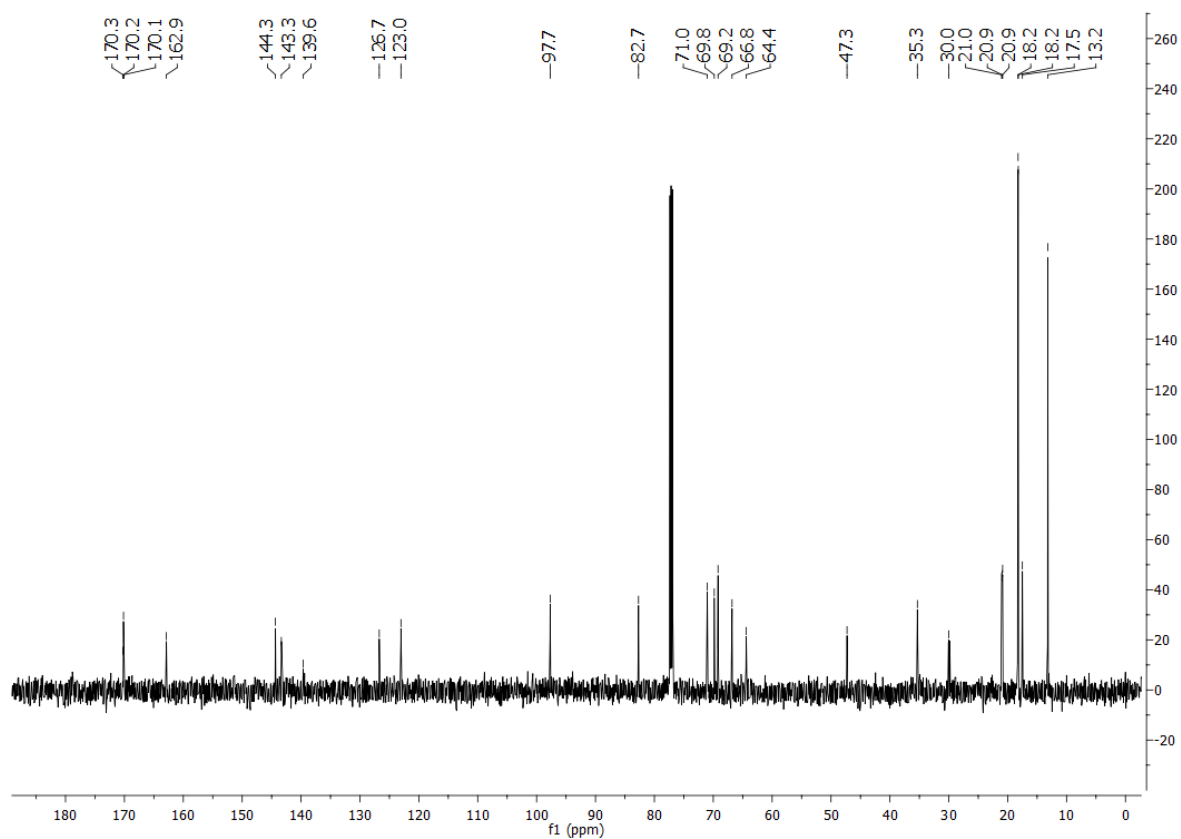
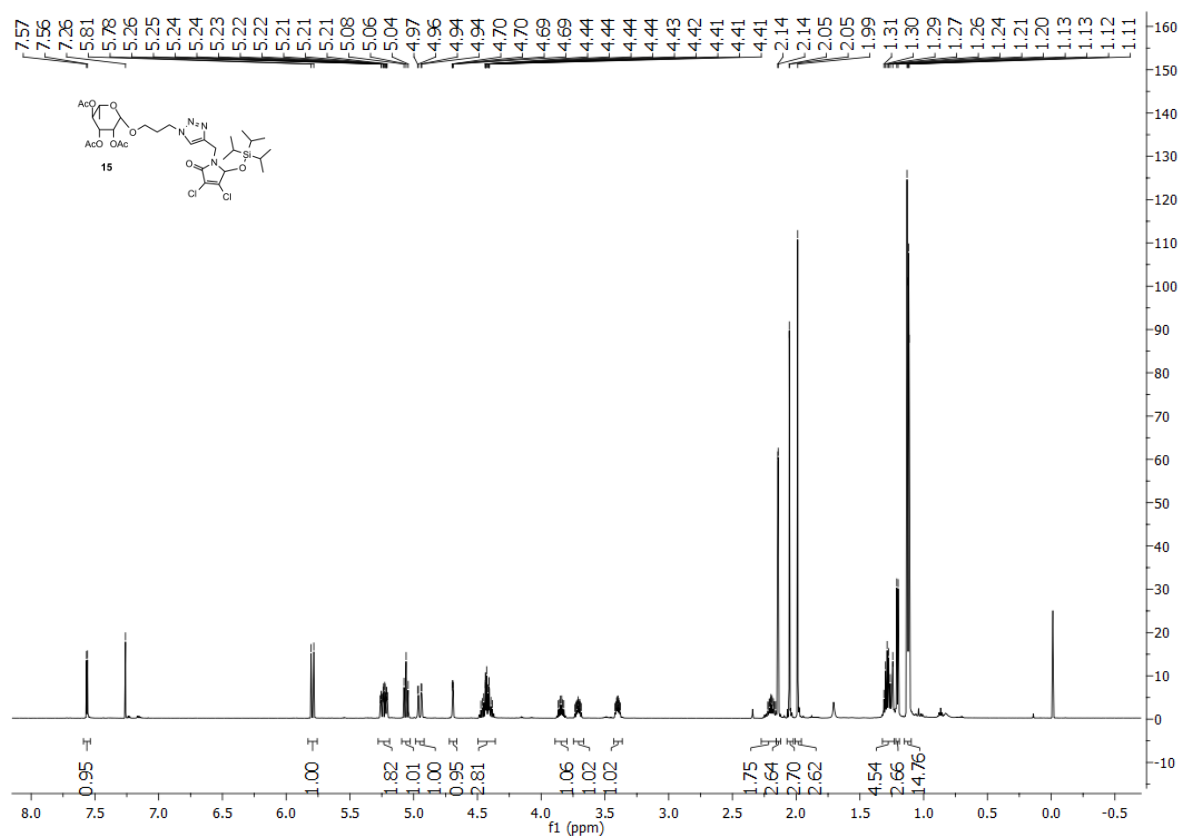
- | | |
|--|------------|
| 1. NMR spectra | S2 |
| 2. Figure S1. Survival fraction of HCT116 and MCF7 cell lines after 72-hours of incubation with tested compounds, evaluated by MTT assay. | S17 |

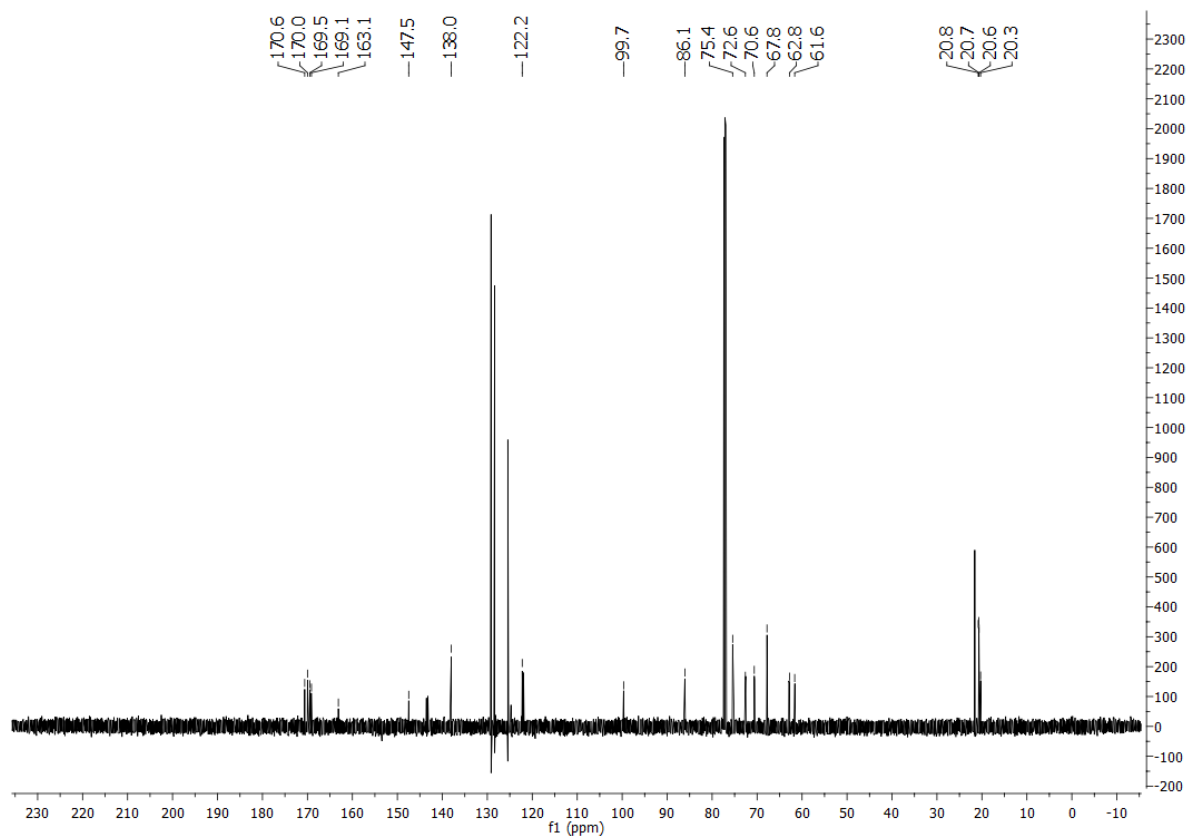
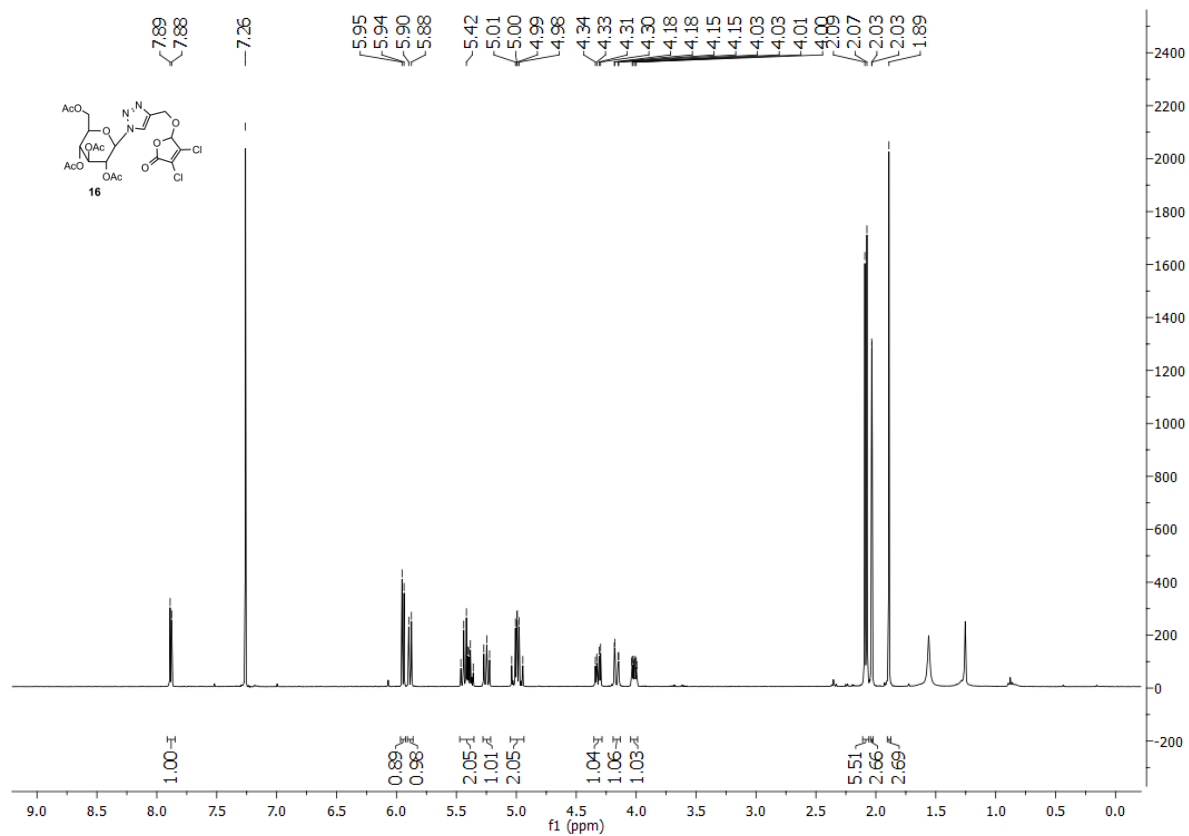


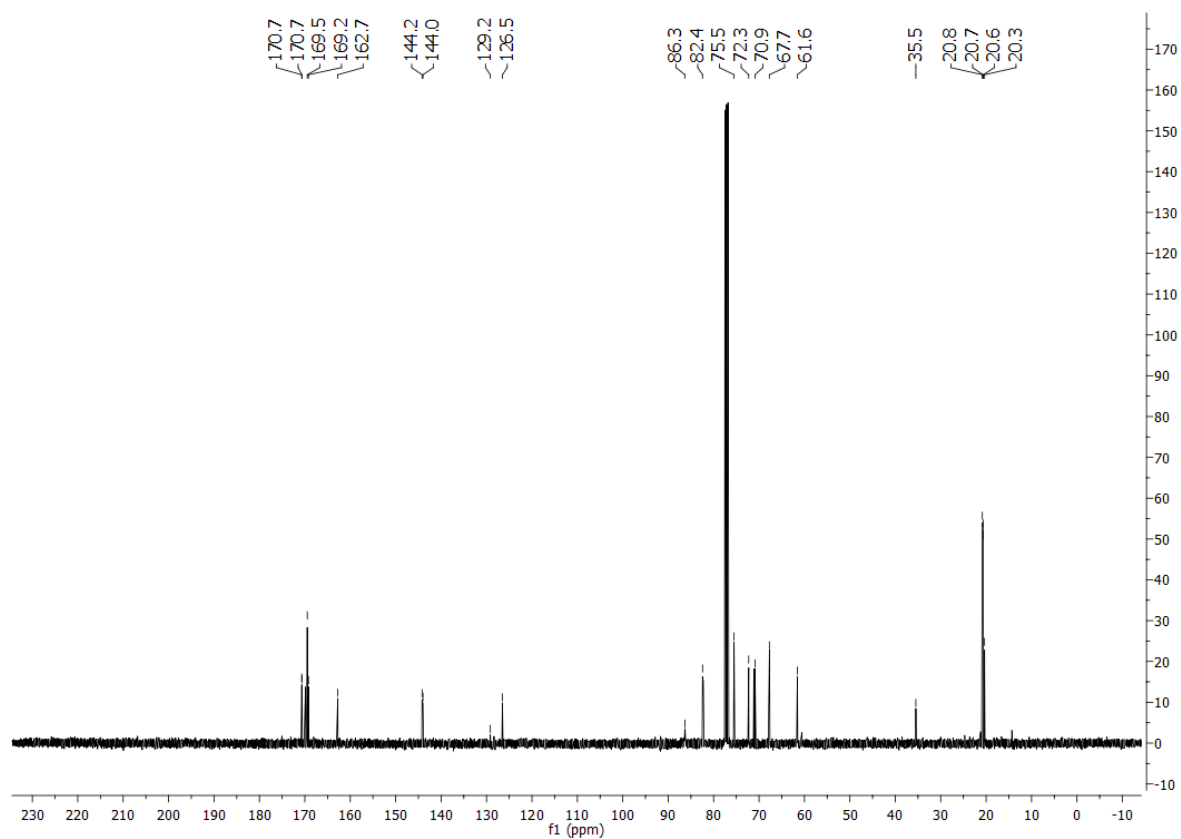
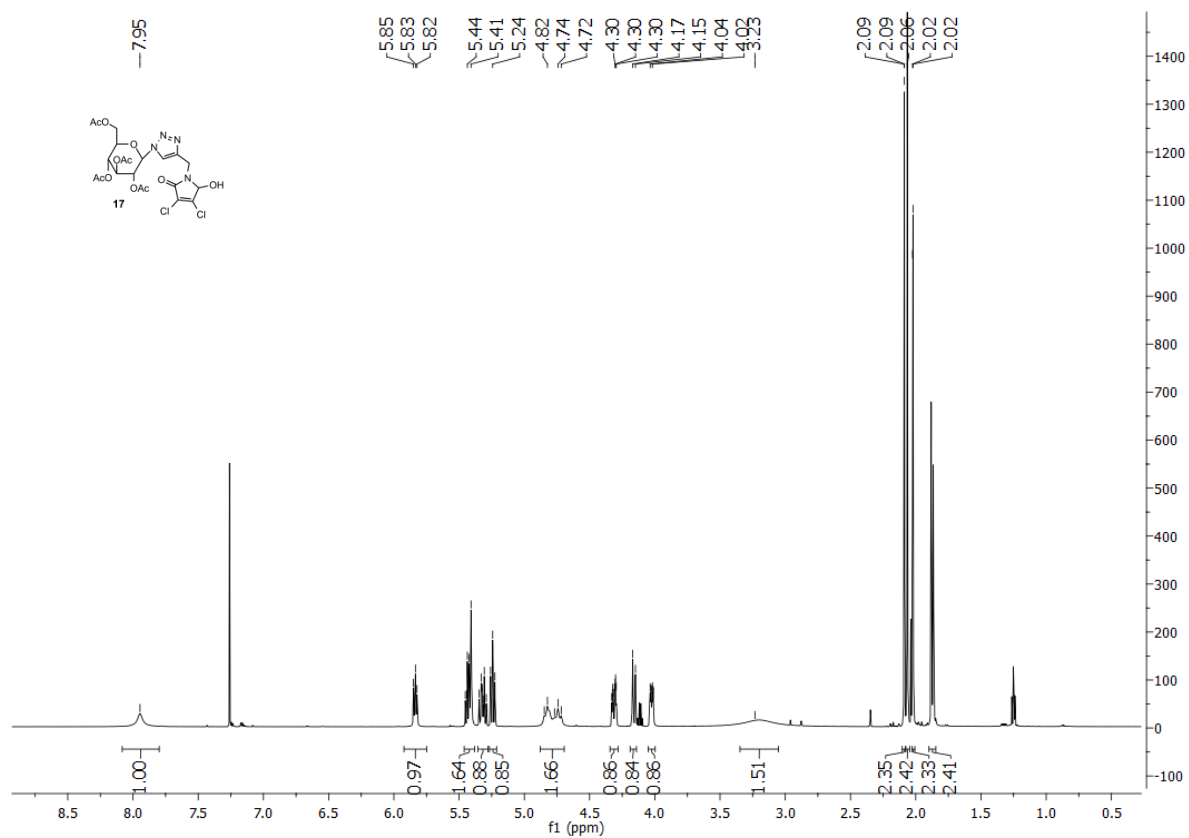


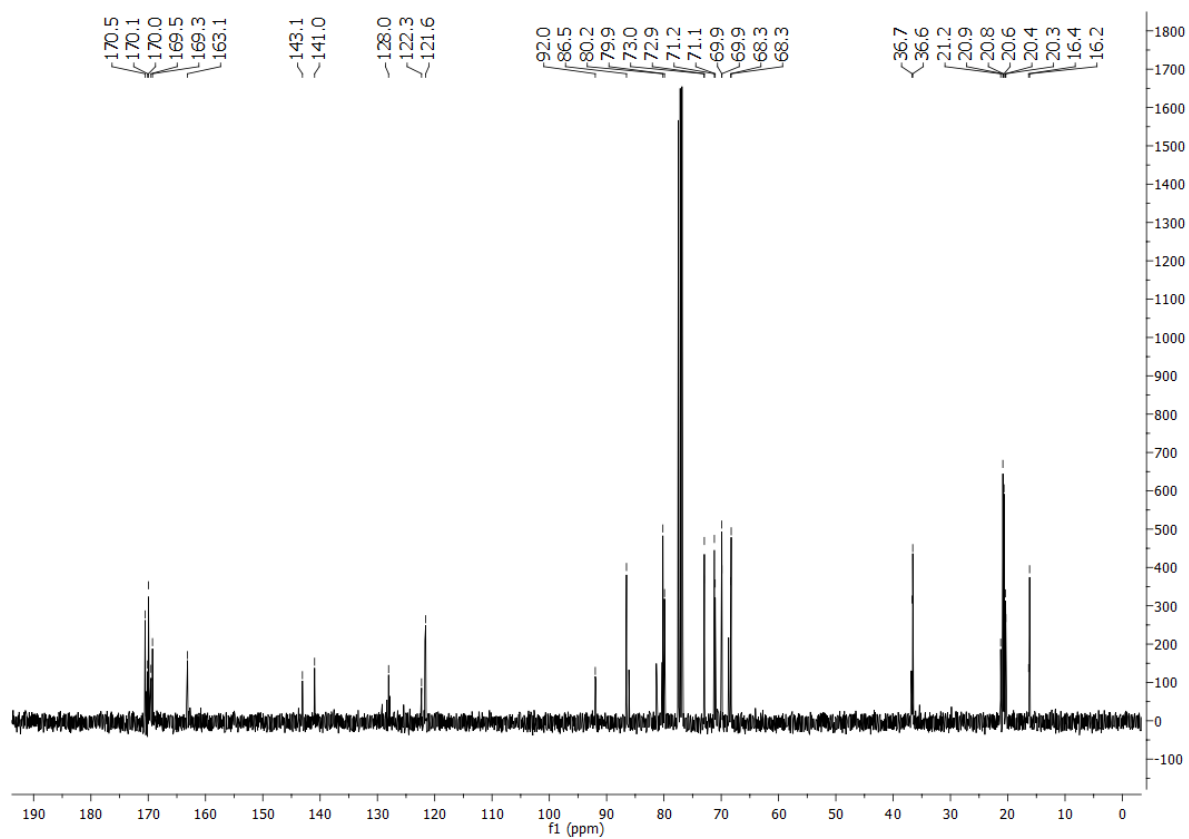
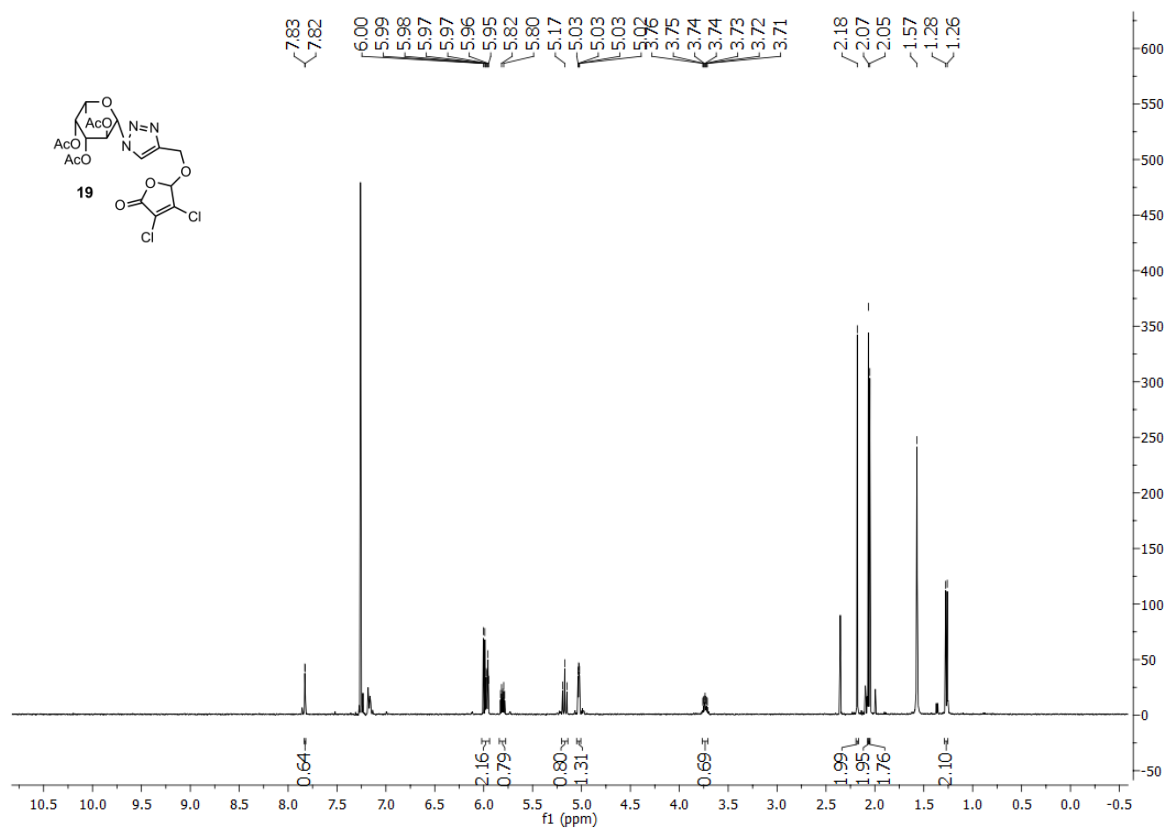


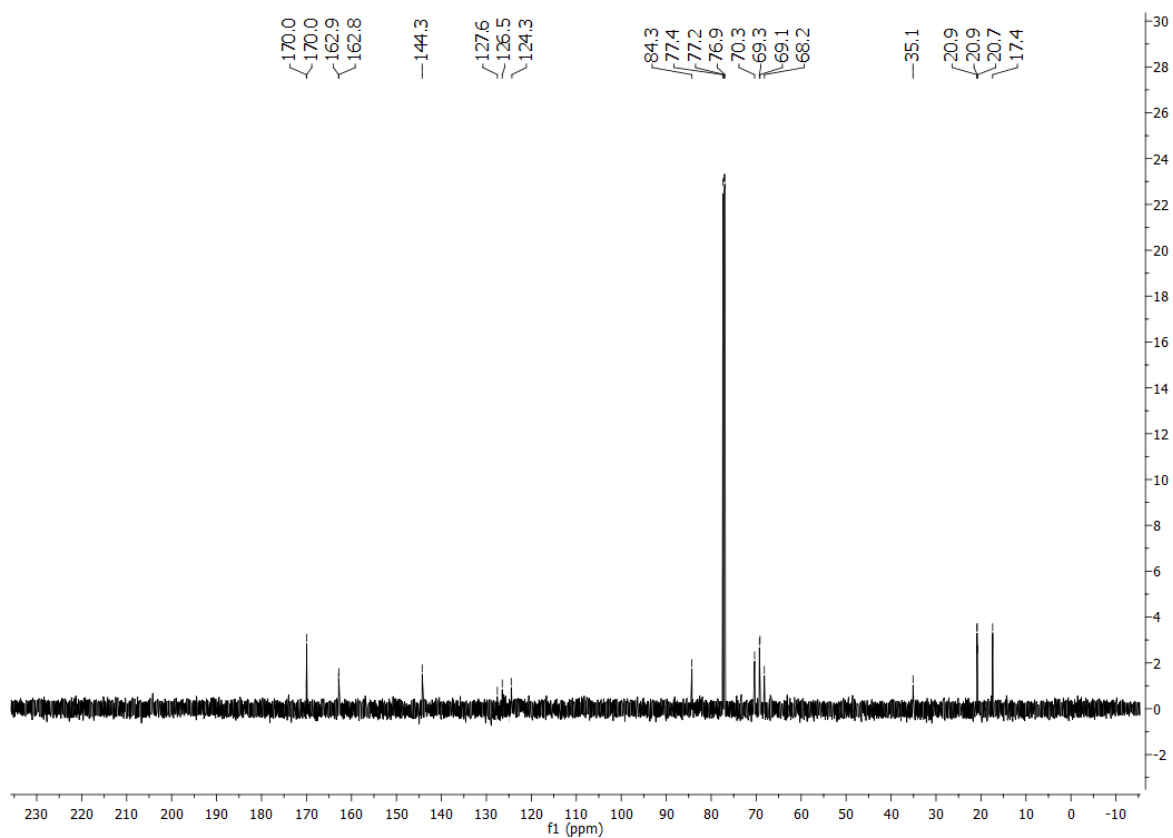
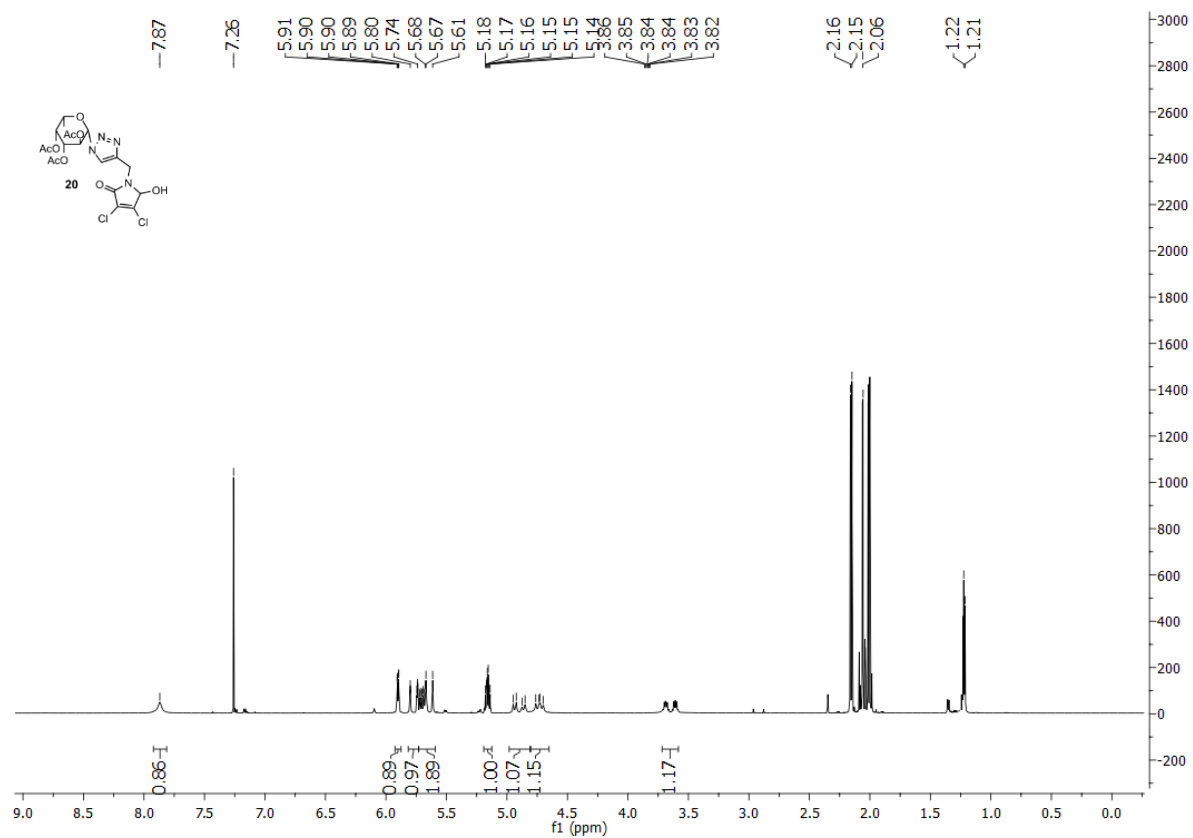


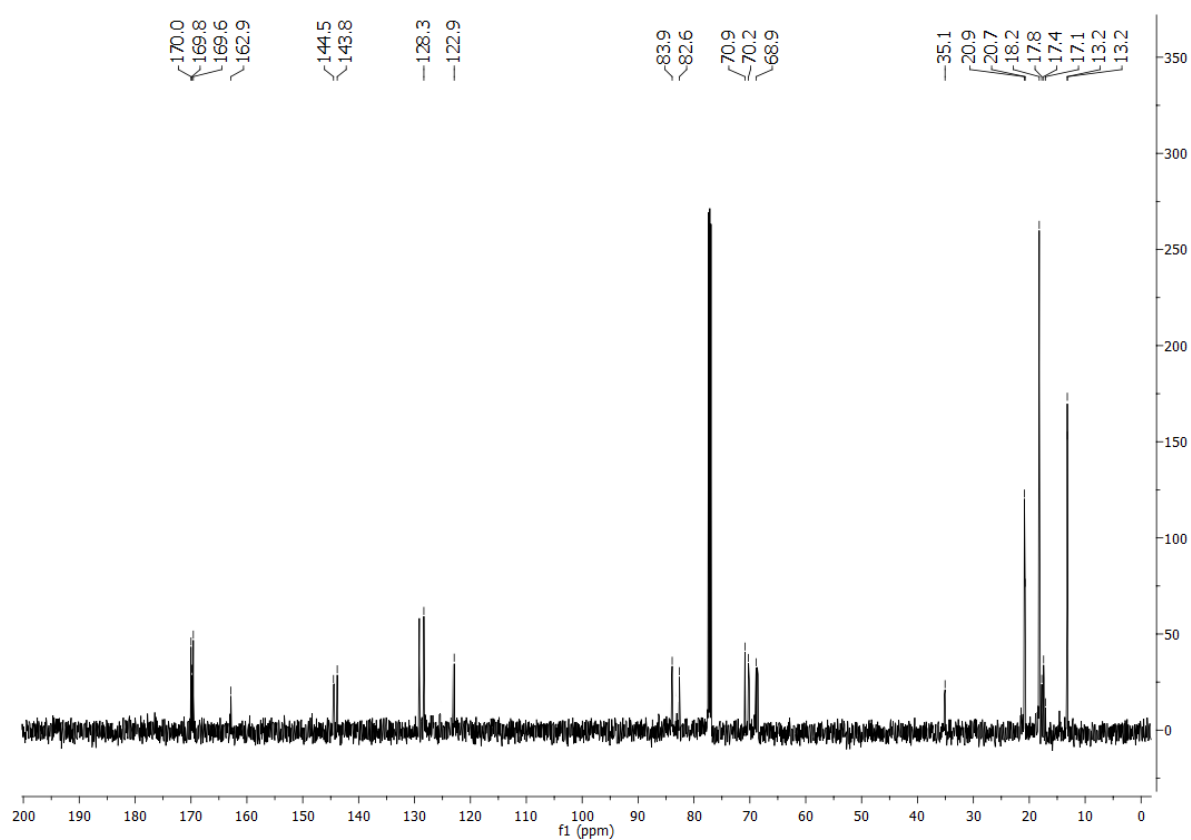
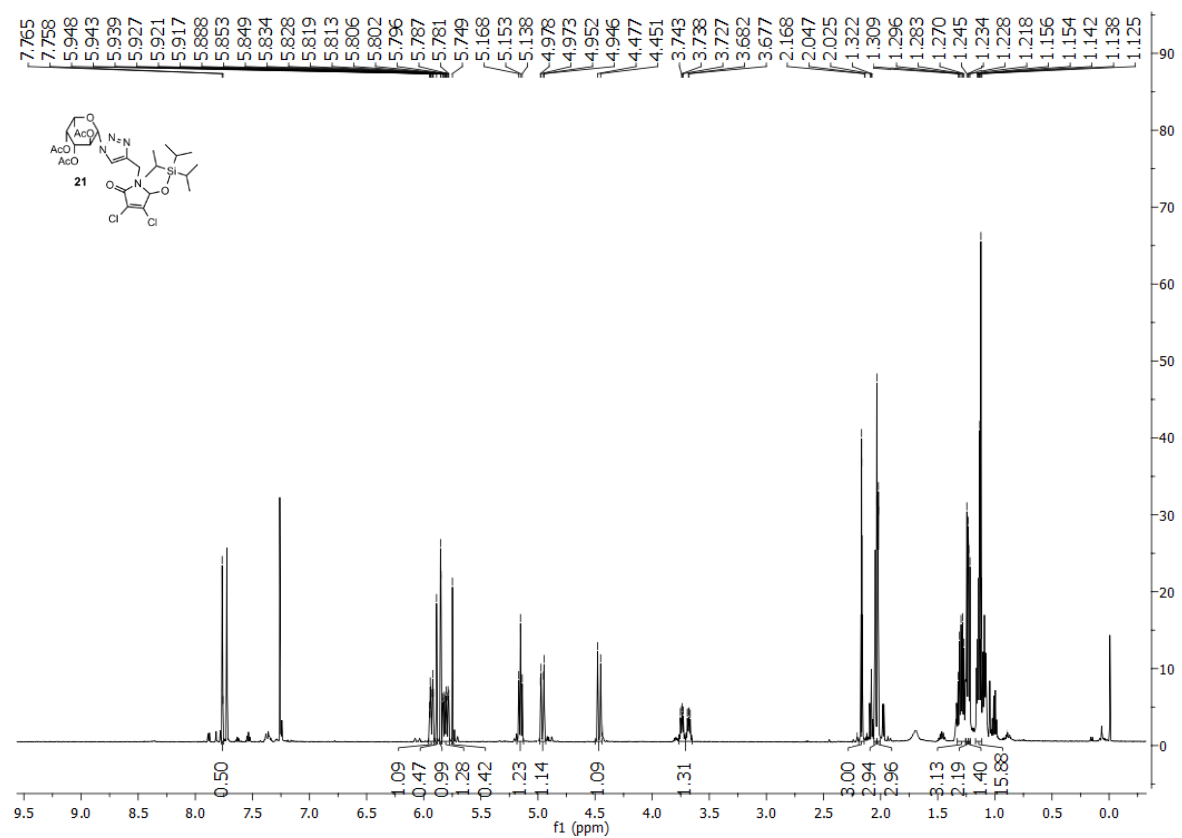


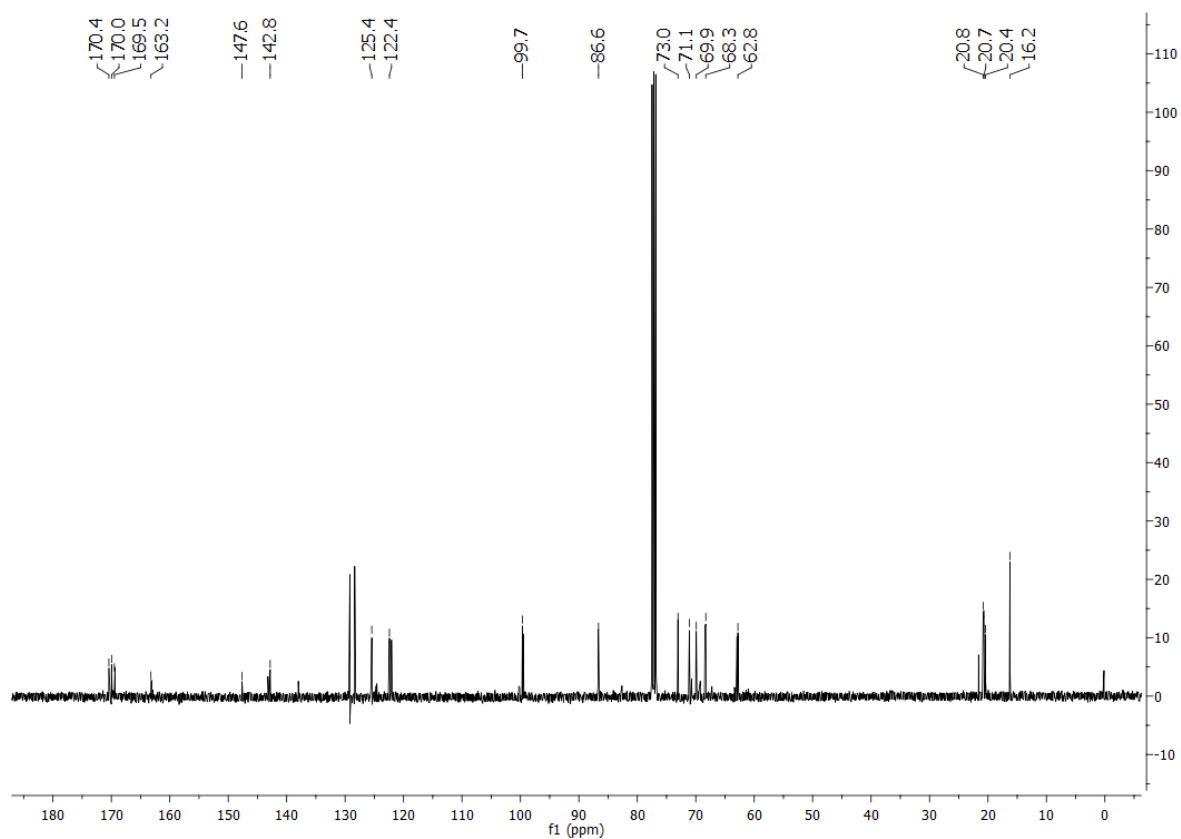
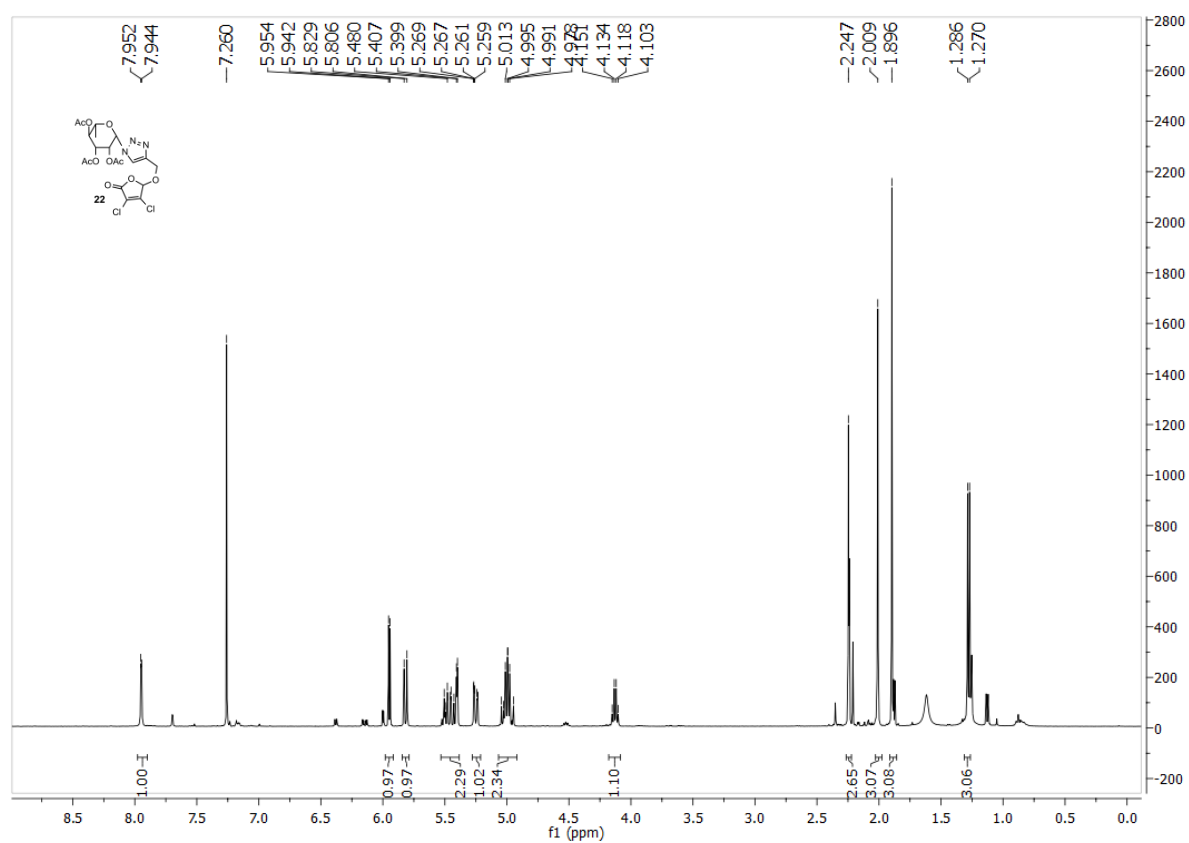


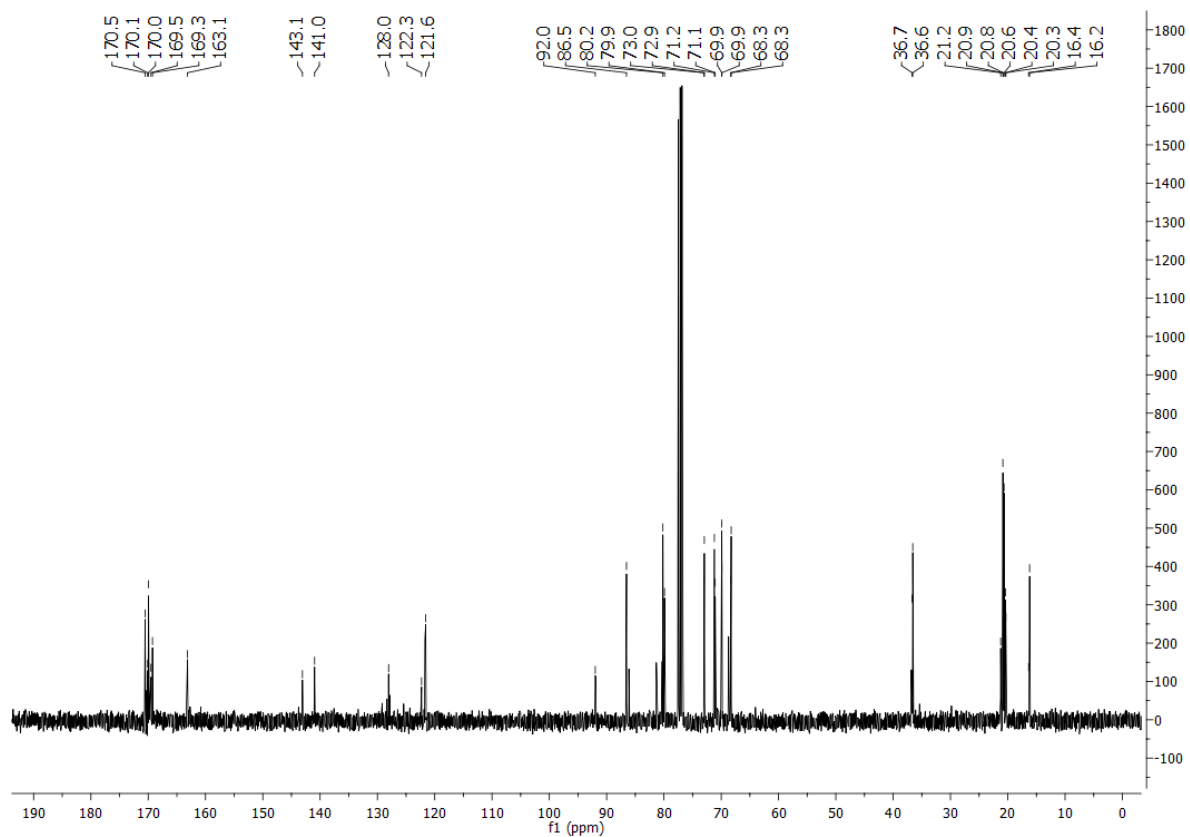
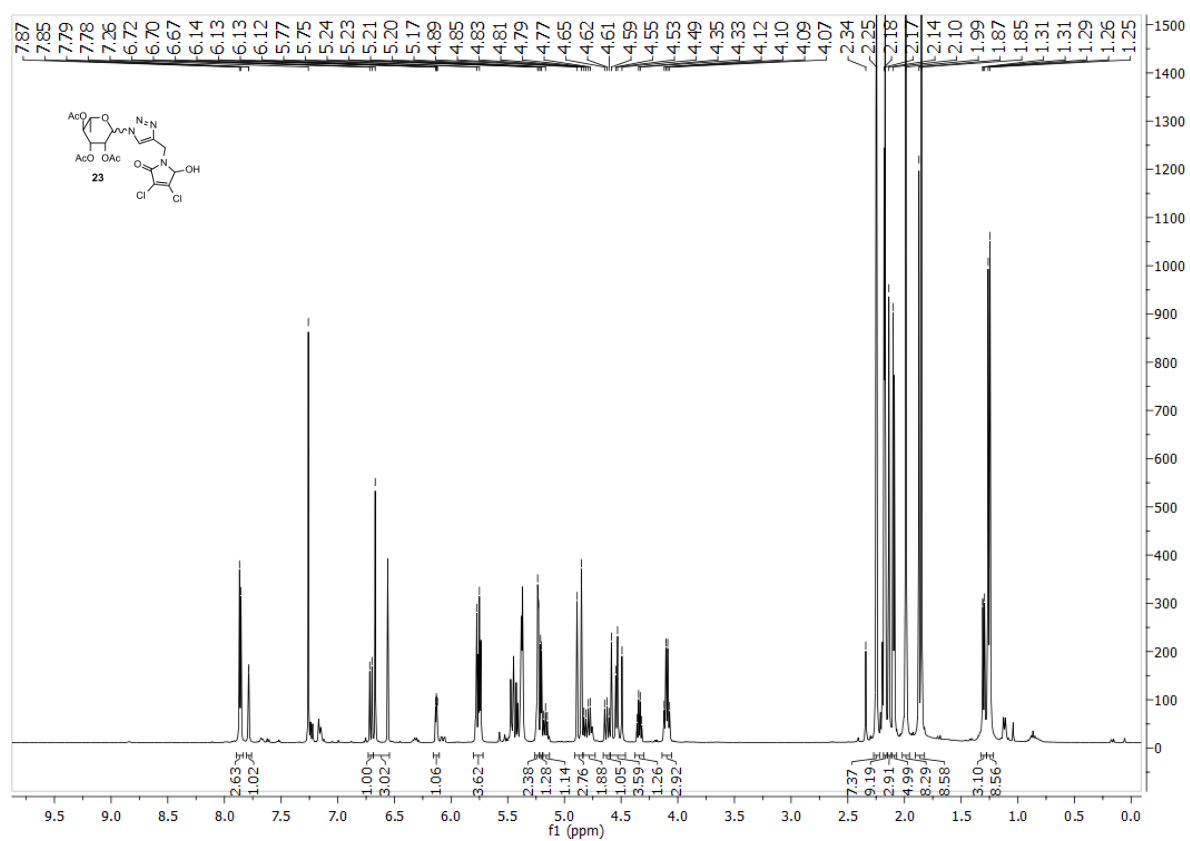


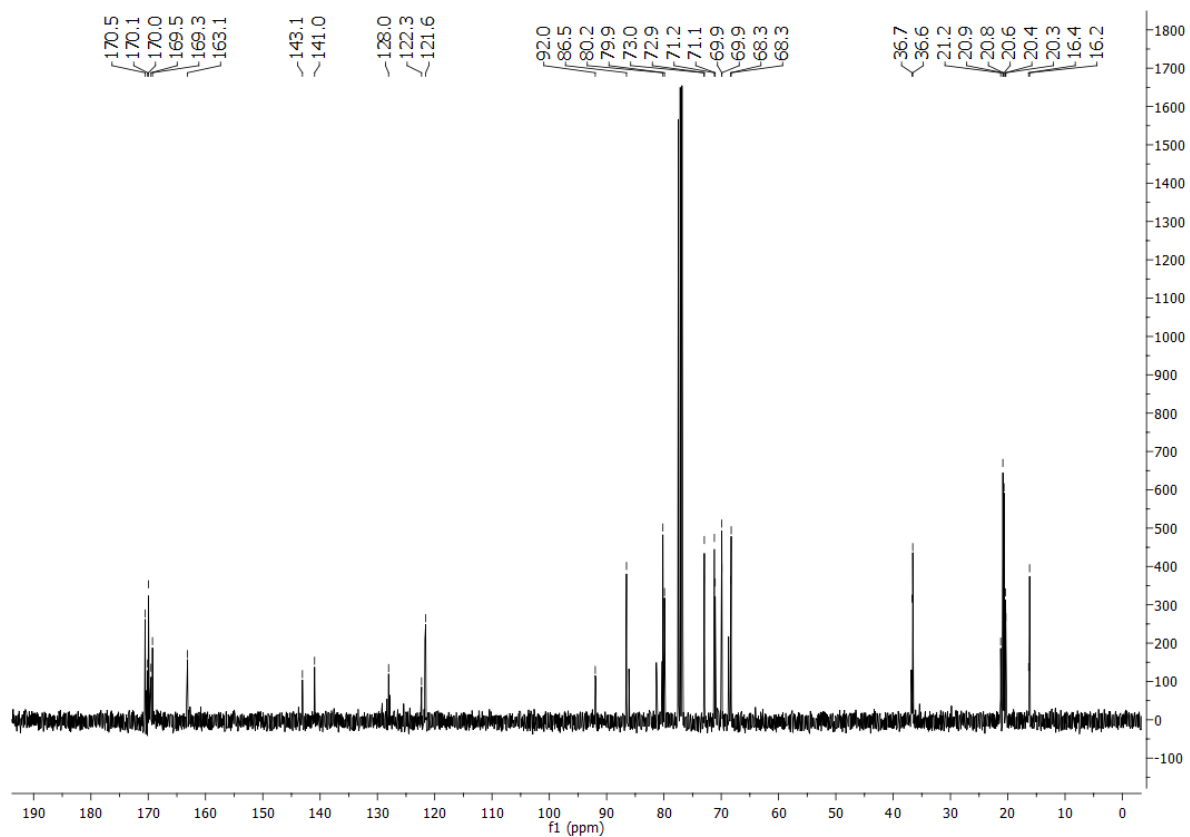
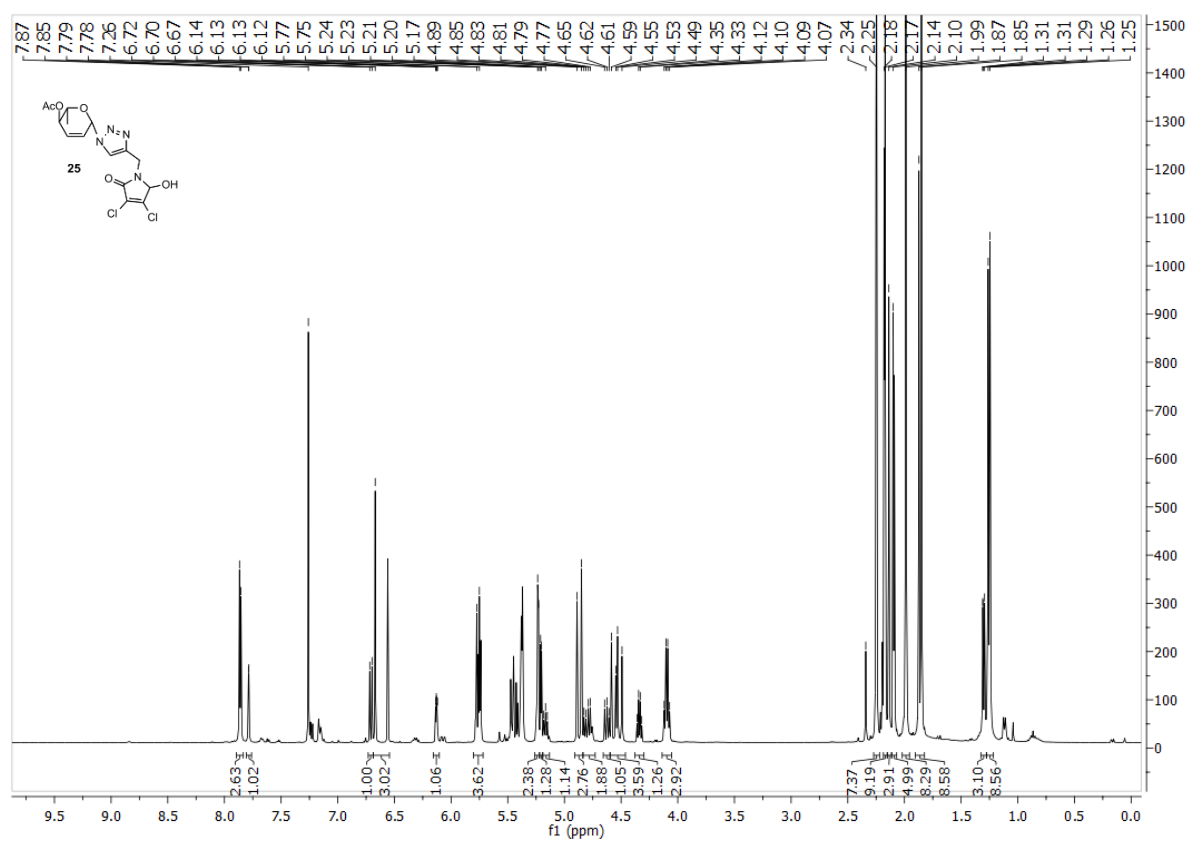












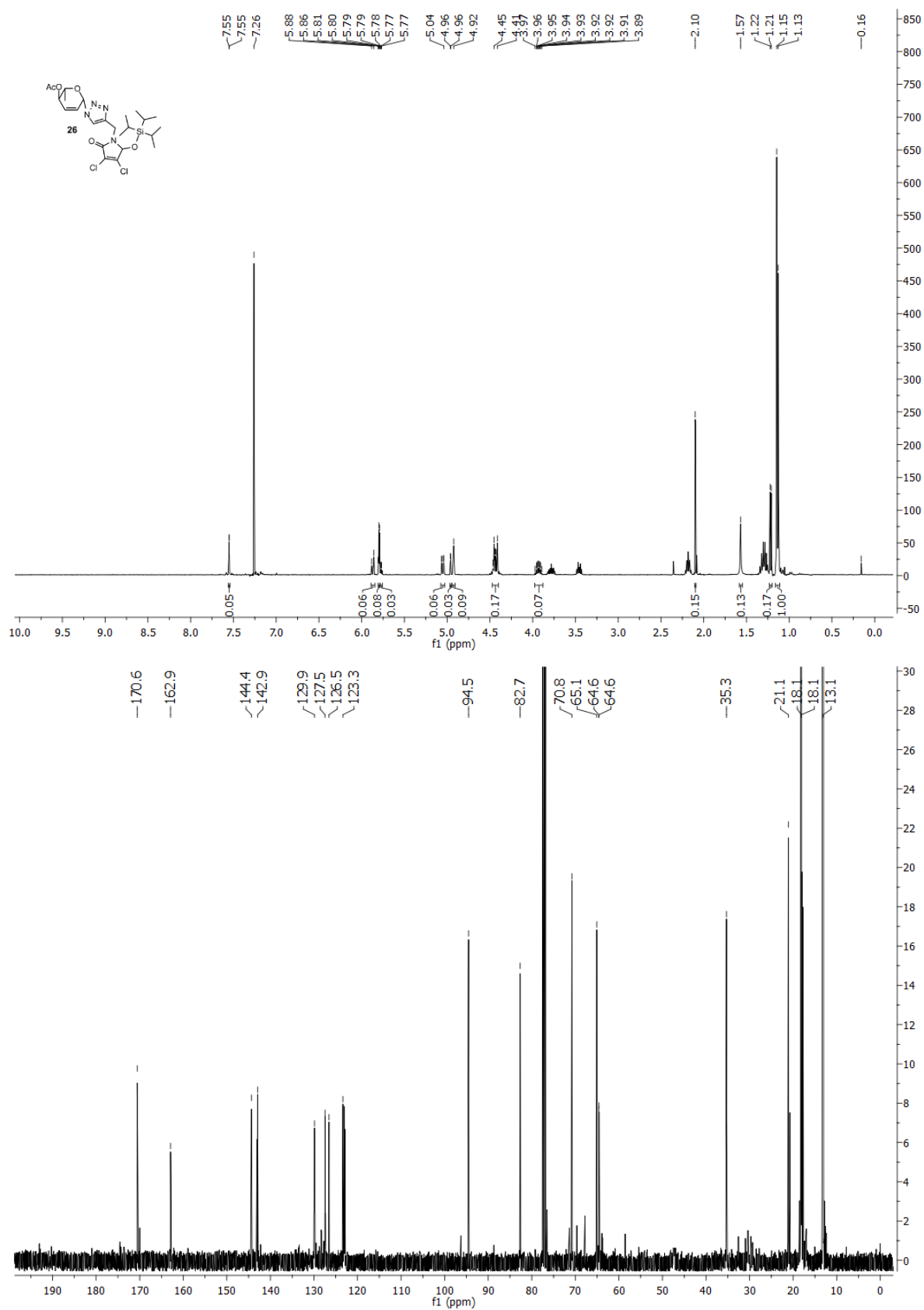
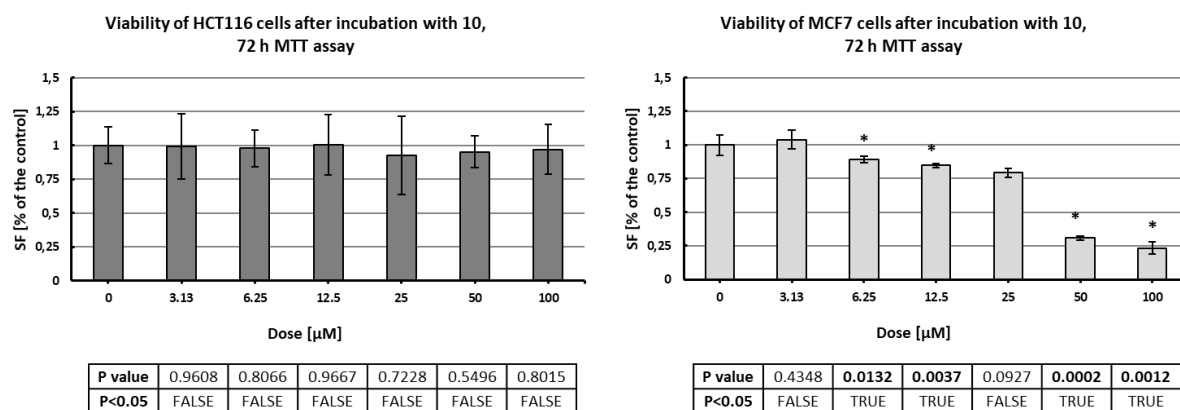
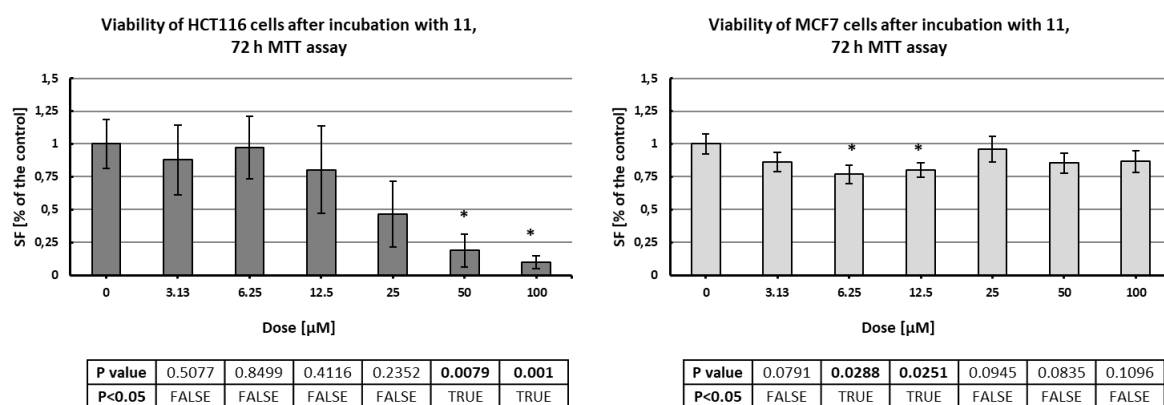


Figure S1. Survival fraction of HCT116 (left) and MCF7 (right) cell lines after 72-hours of incubation with tested compounds (10, 11, 12, 13, 14, 15, 16, 17, 18, 19, 20, 21, 22, 23, 24, 25, 26, respectively), evaluated by MTT assay. Results presented as mean from 3 experiments, +/- SD. Statistical significance indicated by star; evaluated by T-test, where $p < 0.05$ (TRUE bolded under the charts).

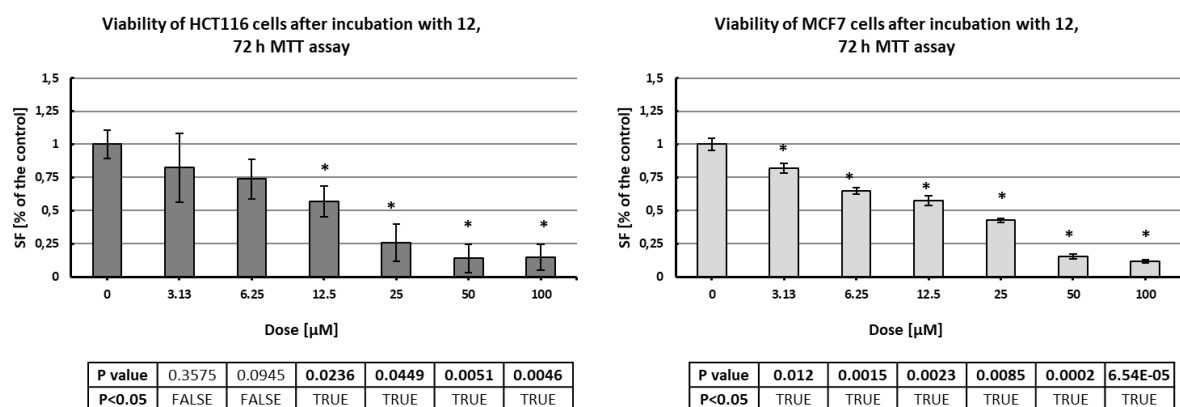
10



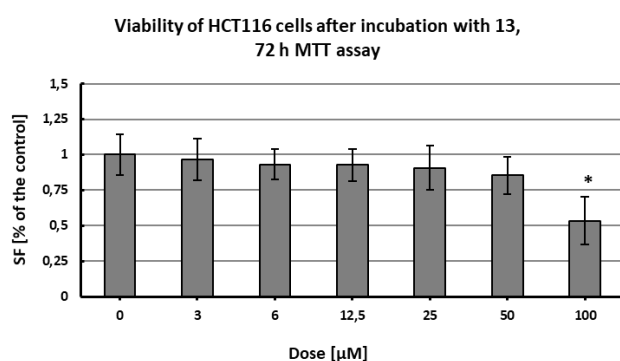
11



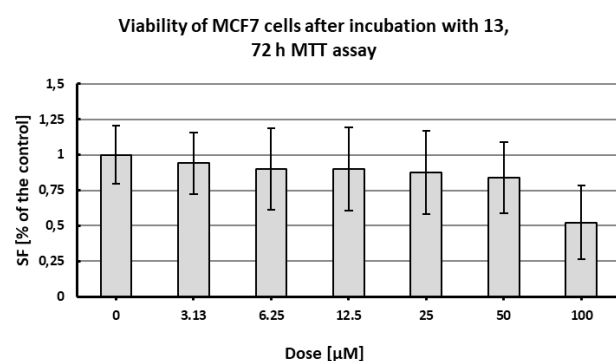
12



13

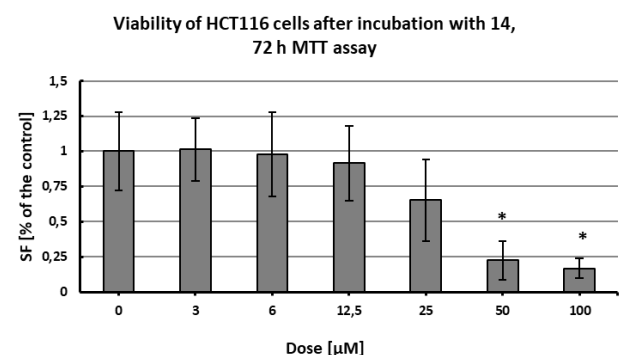


P value	0.7367	0.3819	0.3878	0.8578	0.1933	0.0404
P<0.05	FALSE	FALSE	FALSE	FALSE	FALSE	TRUE

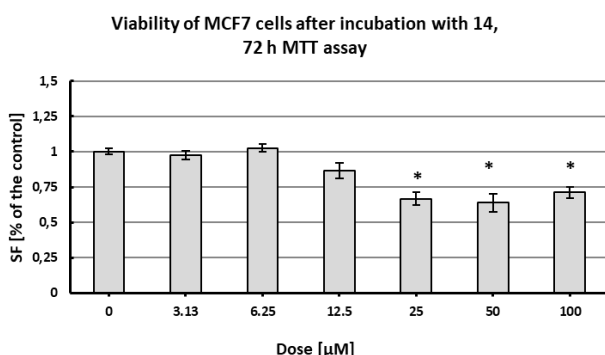


P value	0.6847	0.6091	0.6177	0.9151	0.3798	0.0859
P<0.05	FALSE	FALSE	FALSE	FALSE	FALSE	FALSE

14

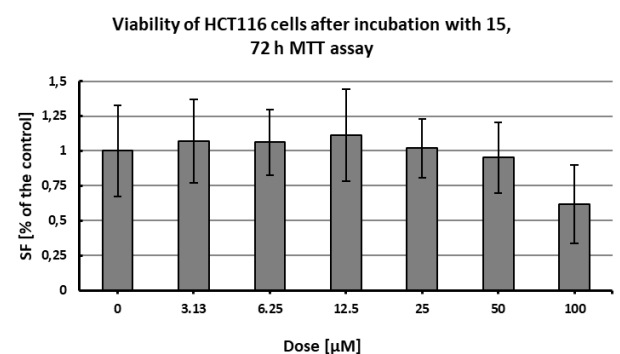


P value	0.9229	0.9153	0.6395	0.3127	0.0103	0.0025
P<0.05	FALSE	FALSE	FALSE	FALSE	TRUE	TRUE

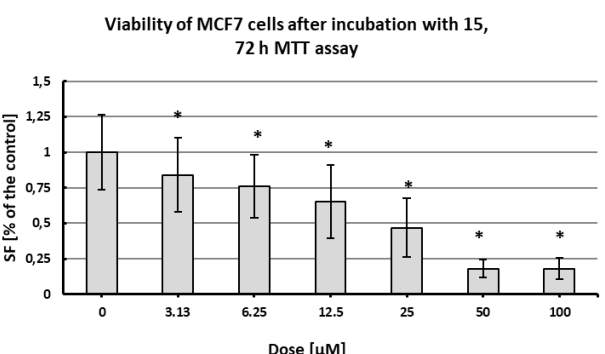


P value	0.3197	0.2292	0.0516	0.0084	0.0102	0.0062
P<0.05	FALSE	FALSE	FALSE	TRUE	TRUE	TRUE

15



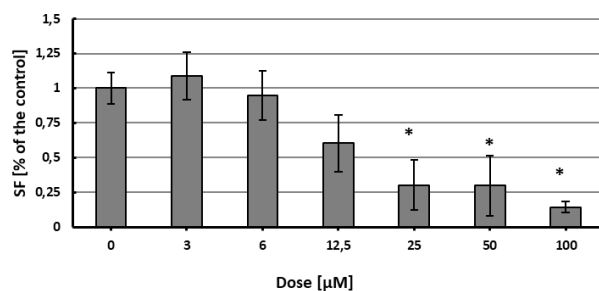
P value	0.7276	0.6992	0.6177	0.7051	0.7771	0.1416
P<0.05	FALSE	FALSE	FALSE	FALSE	FALSE	FALSE



P value	0.0454	0.0032	0.0022	0.0032	0.0003	0.0008
P<0.05	TRUE	TRUE	TRUE	TRUE	TRUE	TRUE

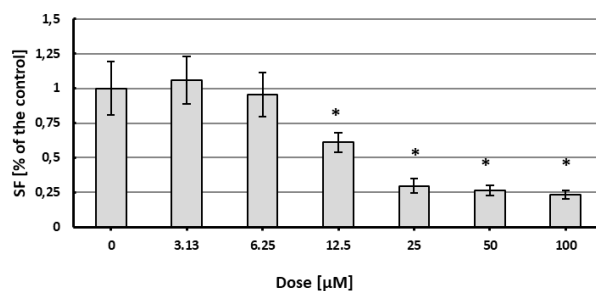
16

Viability of HCT116 cells after incubation with 16,
72 h MTT assay



P value	0.4746	0.6621	0.0794	0.0297	0.0308	0.0006
P<0.05	FALSE	FALSE	FALSE	TRUE	TRUE	TRUE

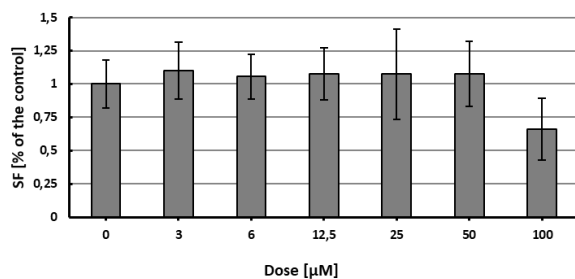
Viability of MCF7 cells after incubation with 16,
72 h MTT assay



P value	0.605	0.678	0.0111	0.0047	0.0008	0.0006
P<0.05	FALSE	FALSE	TRUE	TRUE	TRUE	TRUE

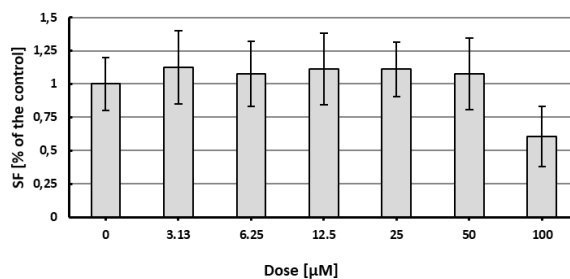
17

Viability of HCT116 cells after incubation with 17,
72 h MTT assay



P value	0.4987	0.6298	0.5601	0.9145	0.6436	0.1266
P<0.05	FALSE	FALSE	FALSE	FALSE	FALSE	FALSE

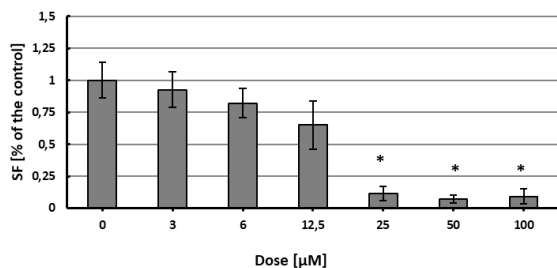
Viability of MCF7 cells after incubation with 17,
72 h MTT assay



P value	0.5099	0.645	0.5398	0.9943	0.6731	0.0944
P<0.05	FALSE	FALSE	FALSE	FALSE	FALSE	FALSE

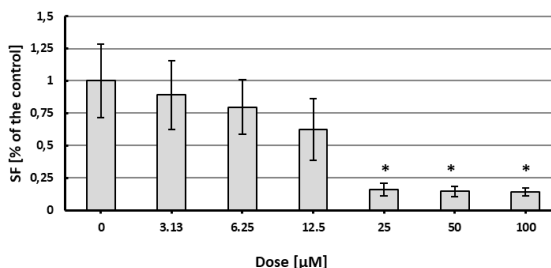
18

Viability of HCT116 cells after incubation with 18,
72 h MTT assay



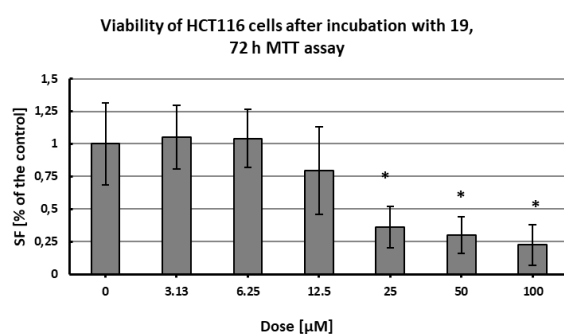
P value	0.4606	0.1127	0.0831	0.0301	0.0004	0.0013
P<0.05	FALSE	FALSE	FALSE	TRUE	TRUE	TRUE

Viability of MCF7 cells after incubation with 18,
72 h MTT assay

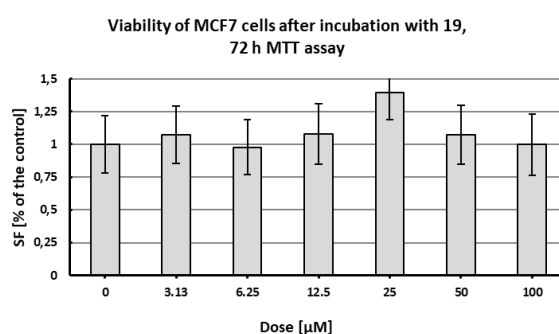


P value	0.5506	0.2357	0.1105	0.0417	0.0006	0.0004
P<0.05	FALSE	FALSE	FALSE	TRUE	TRUE	TRUE

19

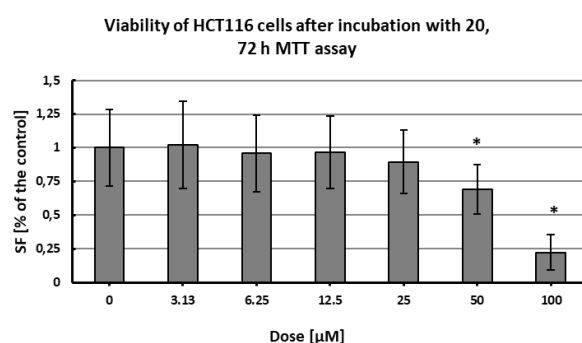


P value	0.7433	0.7801	0.398	0.0414	0.0131	0.0131
P<0.05	FALSE	FALSE	FALSE	TRUE	TRUE	TRUE

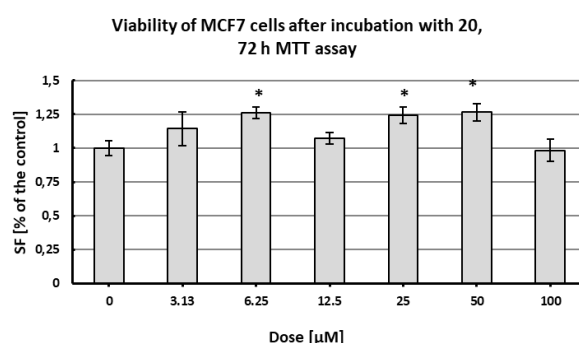


P value	0.6316	0.8688	0.6167	0.151	0.6302	0.9866
P<0.05	FALSE	FALSE	FALSE	FALSE	FALSE	FALSE

20

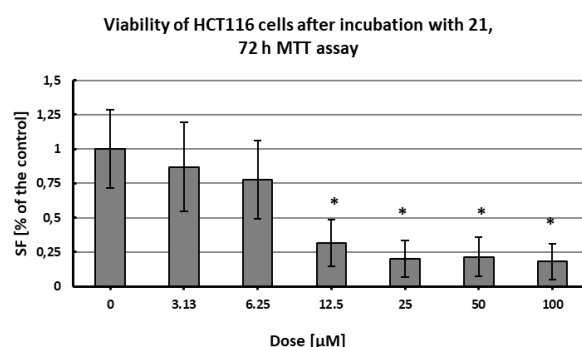


P value	0.9207	0.8185	0.8394	0.748	0.1058	0.0094
P<0.05	FALSE	FALSE	FALSE	FALSE	TRUE	TRUE

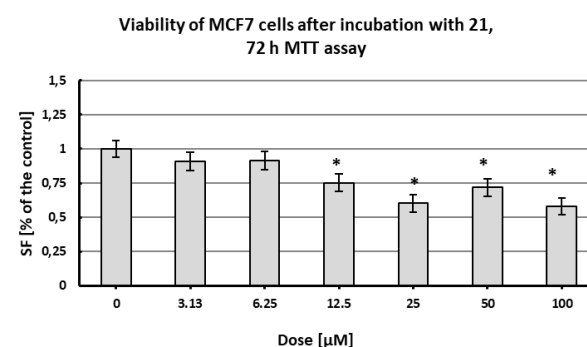


P value	0.1818	0.0083	0.099	0.0207	0.0197	0.7542
P<0.05	FALSE	TRUE	FALSE	TRUE	TRUE	FALSE

21

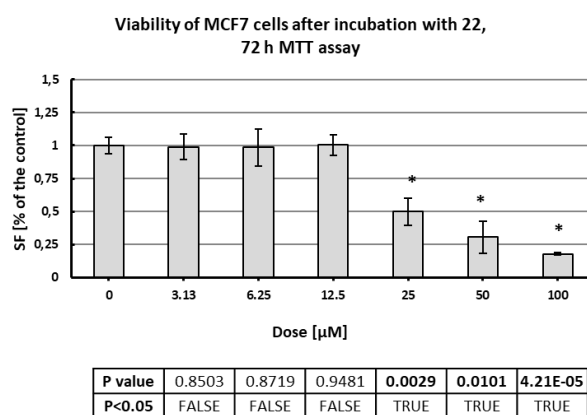
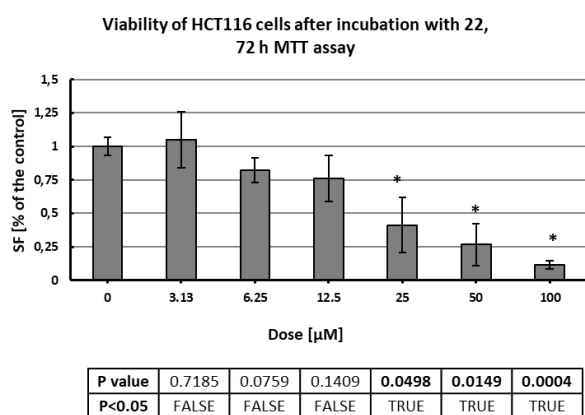


P value	0.5579	0.3071	0.0196	0.0114	0.0109	0.0085
P<0.05	FALSE	FALSE	TRUE	TRUE	TRUE	TRUE

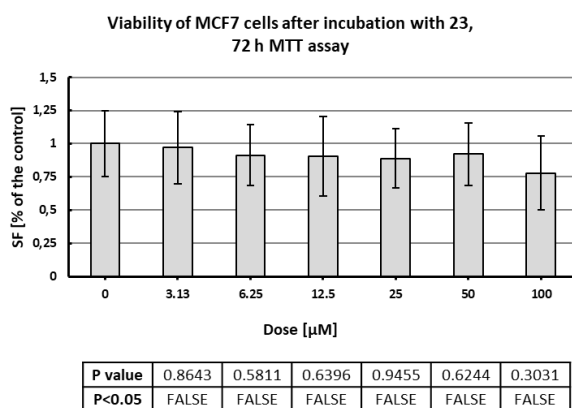
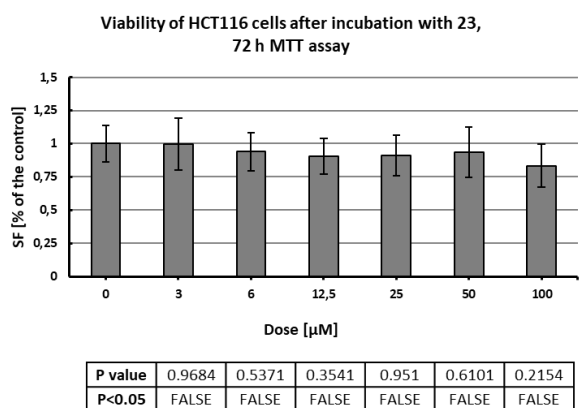


P value	0.1321	0.1511	0.022	0.045	0.0173	0.0072
P<0.05	FALSE	FALSE	TRUE	TRUE	TRUE	TRUE

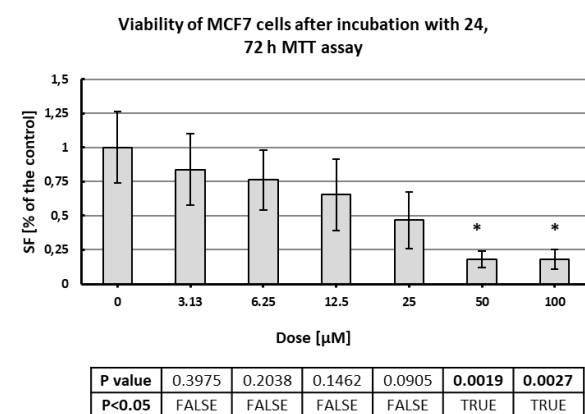
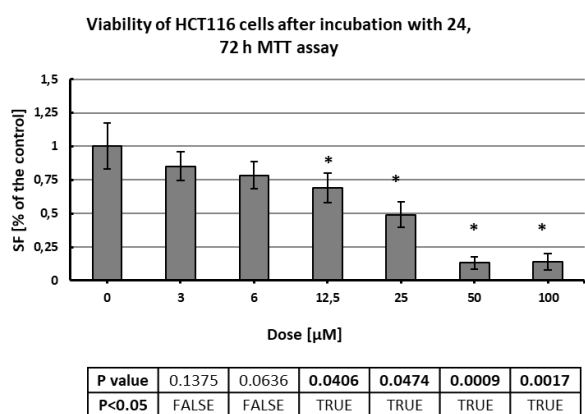
22



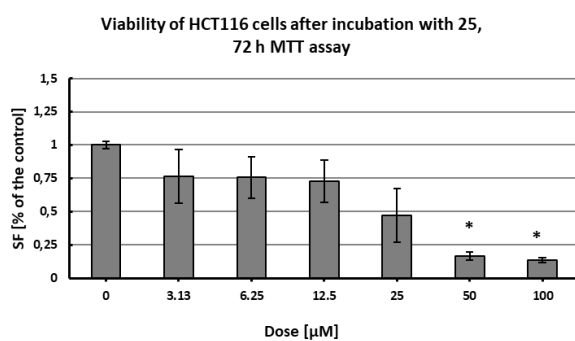
23



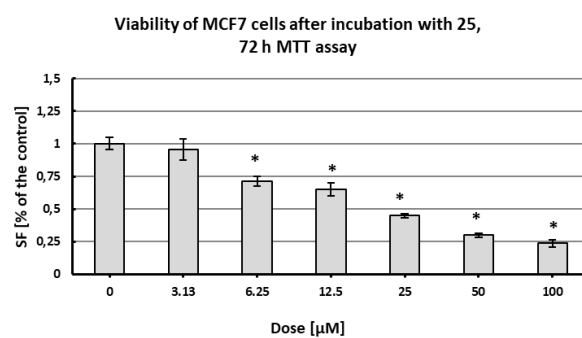
24



25

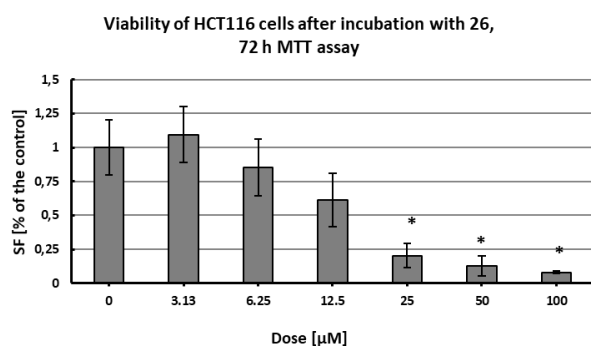


P value	0.1813	0.1142	0.1001	0.1649	0.0005	0.0001
P<0.05	FALSE	FALSE	FALSE	FALSE	TRUE	TRUE

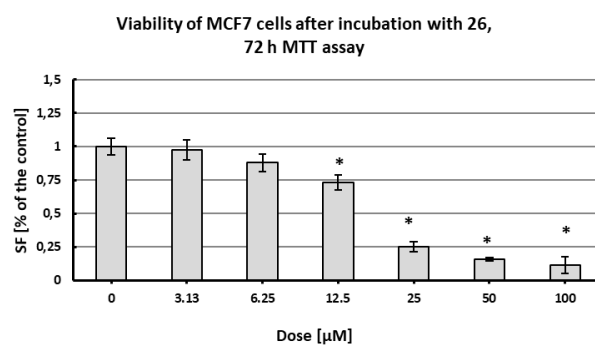


P value	0.4322	0.0056	0.0063	0.0134	0.0002	0.0004
P<0.05	FALSE	TRUE	TRUE	TRUE	TRUE	TRUE

26



P value	0.5142	0.3536	0.0764	0.0509	0.0023	3.42E-05
P<0.05	FALSE	FALSE	FALSE	TRUE	TRUE	TRUE



P value	0.6008	0.0824	0.015	0.0006	9.01E-05	0.0015
P<0.05	FALSE	FALSE	TRUE	TRUE	TRUE	TRUE