

Supplementary information

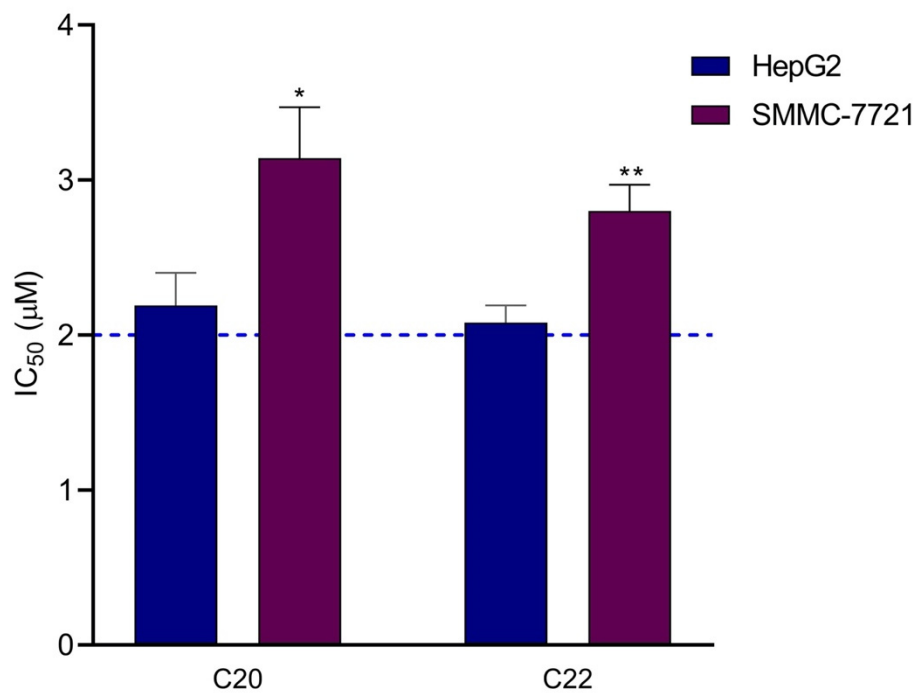


Figure S1 IC₅₀ of C20 and C22 for HepG2 and SMMC-7721 cells. The displayed data correspond to the mean \pm SD of three separate experiments. The p -value was analyzed by Student t -test using GraphPad Prism version 8.00. * $p < 0.05$, ** $p < 0.01$, HepG2 *vs.* SMMC-7721 groups.

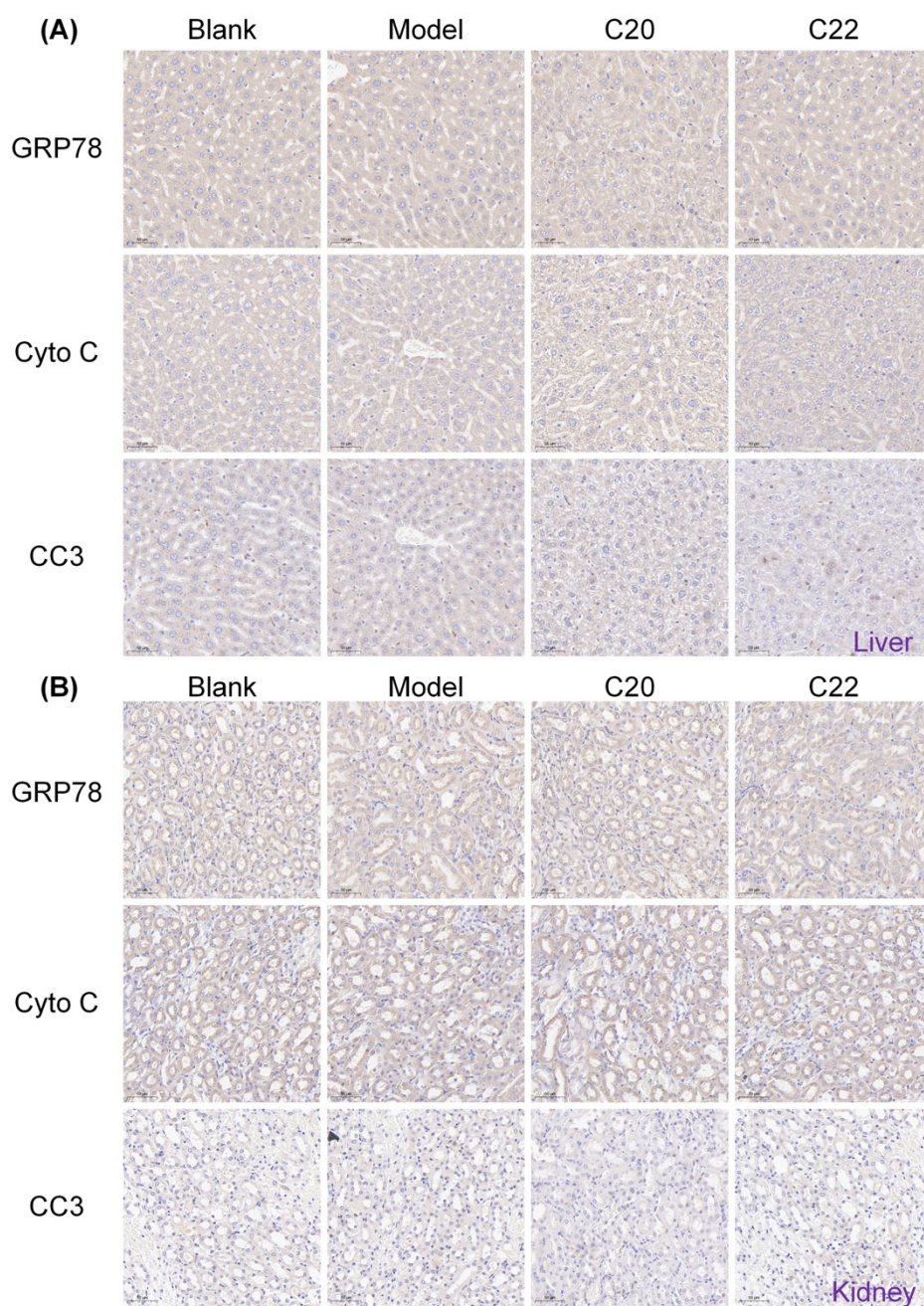


Figure S2 Immunohistochemistry stain of (A) liver and (B) kidney tissues harvested from the xenograft mice.