

SUPPLEMENTARY MATERIALS

Mitophagy Mediates the Beige to White Transition of Human Primary Subcutaneous Adipocytes Ex Vivo

Attila Vámos ^{1,2,†}, Abhirup Shaw ^{1,2,†}, Klára Varga ^{1,2}, István Csomós ³, Gábor Mocsár ³,
Zoltán Balajthy ¹, Cecília Lányi ⁴, Zsolt Bacso ^{3,5}, Mária Szatmári-Tóth ^{1,‡} and Endre Kristóf ^{1,*,‡}

¹ Laboratory of Cell Biochemistry, Department of Biochemistry and Molecular Biology, Faculty of Medicine, University of Debrecen, H-4032 Debrecen, Hungary; vamos.attila@med.unideb.hu (A.V.); abhirup.shaw@med.unideb.hu (A.S.); klaravarga95@gmail.com (K.V.); balajthy@med.unideb.hu (Z.B.); szatmari-toth.maria@med.unideb.hu (M.S.-T.)

² Doctoral School of Molecular Cell and Immune Biology, University of Debrecen, H-4032 Debrecen, Hungary

³ Department of Biophysics and Cell Biology, Faculty of Medicine, University of Debrecen, H-4032 Debrecen, Hungary; csomos.istvan@med.unideb.hu (I.C.); mocsgab@med.unideb.hu (G.M.); bacso@med.unideb.hu (Z.B.)

⁴ Laser Clinic, H-1012 Budapest, Hungary; lezerklinika@gmail.com

⁵ Faculty of Pharmacy, University of Debrecen, H-4032 Debrecen, Hungary

* Correspondence: kristof.endre@med.unideb.hu; Tel.: +36-52-416-432

† These authors have contributed equally to this work.

‡ These authors have contributed equally to this work.

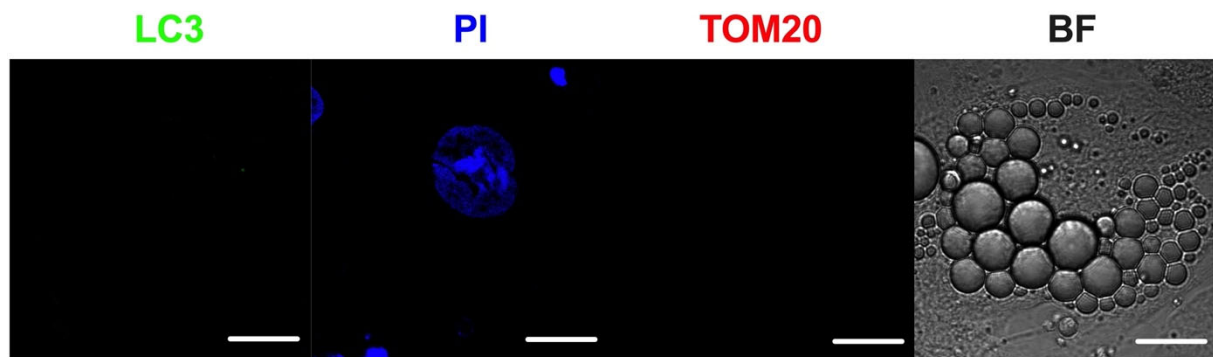


Figure S1: Secondary antibody control images showing the specificity of the antibodies used for LC3 and TOM20 immunostaining. PI labels the nucleus. BF represents brightfield image. Scalebars represent 10 μ m.

Table S1: Table listing all gene expression assays used in the study

Gene name	Assay ID
<i>UCP1</i>	Hs00222453_m1
<i>PPARGC1A</i>	Hs01016719_m1
<i>GAPDH</i>	Hs99999905_m1
<i>PARK2</i>	Hs01038322_m1
<i>SQSTM1</i>	Hs00177654_m1
<i>OPTN</i>	Hs00184221_m1
<i>NDP52</i>	Hs00977443_m1
<i>BNIP3</i>	Hs00969291_m1
<i>BNIP3L</i>	Hs00188949_m1
<i>FKBP8</i>	Hs01014664_m1
<i>BCL2L13</i>	Hs00209789_m1
<i>FUNDC1</i>	Hs00697693_m1
<i>CIDEA</i>	Hs00154455_m1
<i>LEP</i>	Hs00174877_m1