

Chemical characterization and biological evaluation of new cobalt(II) complexes with bioactive ligands, 2-picolinehydroxamic acid and reduced Schiff base *N*-(2-hydroxybenzyl)alanine, in terms of DNA binding and antimicrobial activity

Magdalena Woźniczka ^{1,*}, Marta Lichawska ¹, Manas Sutradhar ², Magdalena Chmiela ³, Weronika Gonciarz ³, Marek Pająk ¹

Page 2. **Figure S1.** (a) Spectra of the complexes in the Co(II)–PicHA–AlaSal system at PicHA-to-AlaSal-to-Co(II) molar ratio 2:2:1, during titration within the pH range of 1.95 – 11.18; $C_{\text{Co(II)}} = 1 \times 10^{-3}$ M. (b) Extended part of the spectra within the pH range of 1.95 – 3.87. (c) Molar absorption coefficients (ϵ) for the complexes in the Co(II)–PicHA–AlaSal system.

Page 3. **Figure S2.** Spectra of the complexes in the Co(II)–PicHA–AlaSal system in 5 mM Tris-HCl/NaCl buffer at pH 7.2 recorded over 14 days ($C_{\text{Co(II)}} = 1.0 \times 10^{-5}$ M, PicHA-to-AlaSal-to-Co(II) molar ratio 2:2:1).

Page 4. **Figure S3.** (a) Species distribution curves as a function of pH relative to PicHA, for the complexes formed in the Co(II)–PicHA–AlaSal system at PicHA-to-AlaSal-to-Co(II) molar ratio 2:2:1, $C_{\text{Co(II)}} = 5.0 \times 10^{-3}$ M, (b) extended part of species distribution curves.

Page 5. **Figure S4.** (a) Species distribution curves as a function of pH relative to AlaSal, for the complexes formed in Co(II)–PicHA–AlaSal system at PicHA-to-AlaSal-to-Co(II) molar ratio 2:2:1, $C_{\text{Co(II)}} = 5.0 \times 10^{-3}$ M, (b) extended part of species distribution curves.

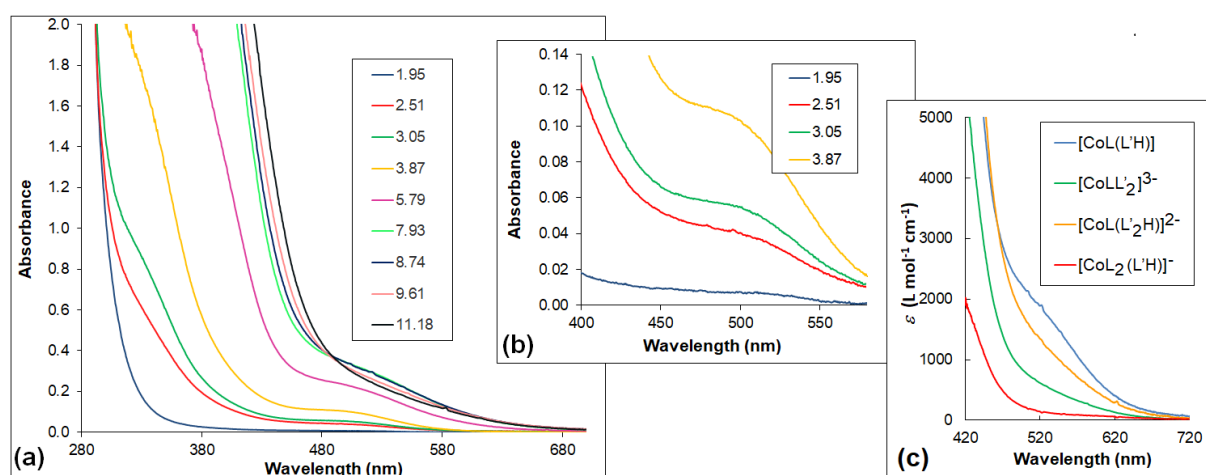


Figure S1. (a) Spectra of the complexes in the Co(II)–PicHA–AlaSal system at PicHA-to-AlaSal-to-Co(II) molar ratio 2:2:1, during titration within the pH range of 1.95 – 11.18; $C_{\text{Co(II)}} = 1 \times 10^{-3}$ M. (b) Extended part of the spectra within the pH range of 1.95 – 3.87. (c) Molar absorption coefficients (ϵ) for the complexes in the Co(II)–PicHA–AlaSal system.

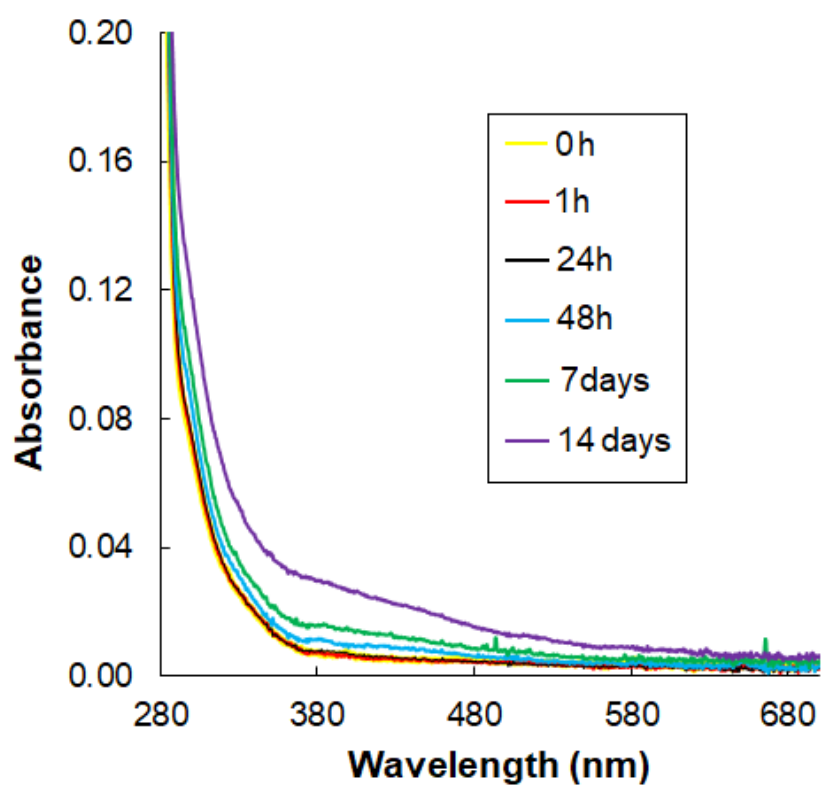


Figure S2. Spectra of the complexes in the Co(II)–PicHA–AlaSal system in 5 mM Tris-HCl/NaCl buffer at pH 7.2 recorded over 14 days ($C_{\text{Co(II)}} = 1.0 \times 10^{-5}$ M, PicHA-to-AlaSal-to-Co(II) molar ratio 2:2:1).

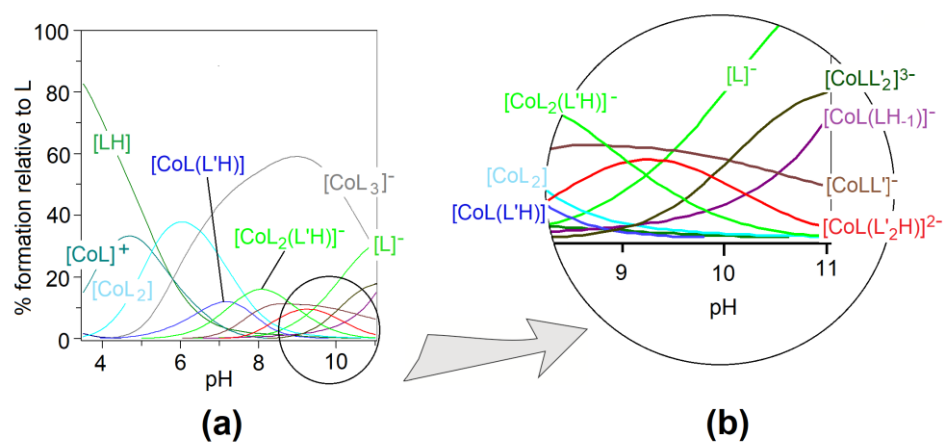


Figure S3. (a) Species distribution curves as a function of pH relative to PicHA, for the complexes formed in the Co(II)–PicHA–AlaSal system at PicHA-to-AlaSal-to-Co(II) molar ratio 2:2:1, $C_{Co(II)} = 5.0 \times 10^{-3}$ M, (b) extended part of species distribution curves.

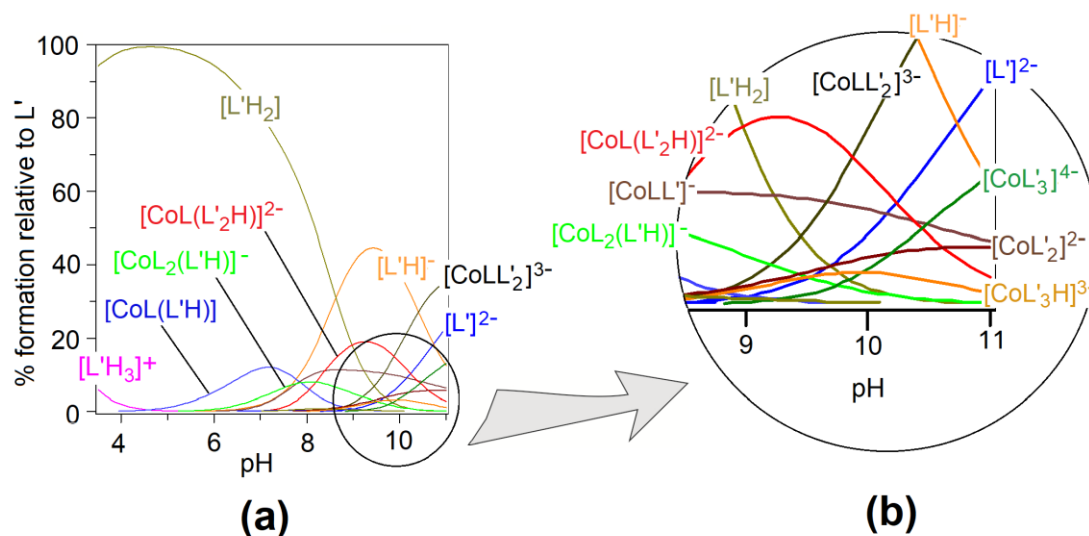


Figure S4. (a) Species distribution curves as a function of pH relative to AlaSal, for the complexes formed in Co(II)–PicHA–AlaSal system at PicHA-to-AlaSal-to-Co(II) molar ratio 2:2:1, $C_{Co(II)} = 5.0 \times 10^{-3}$ M, (b) extended part of species distribution curves.