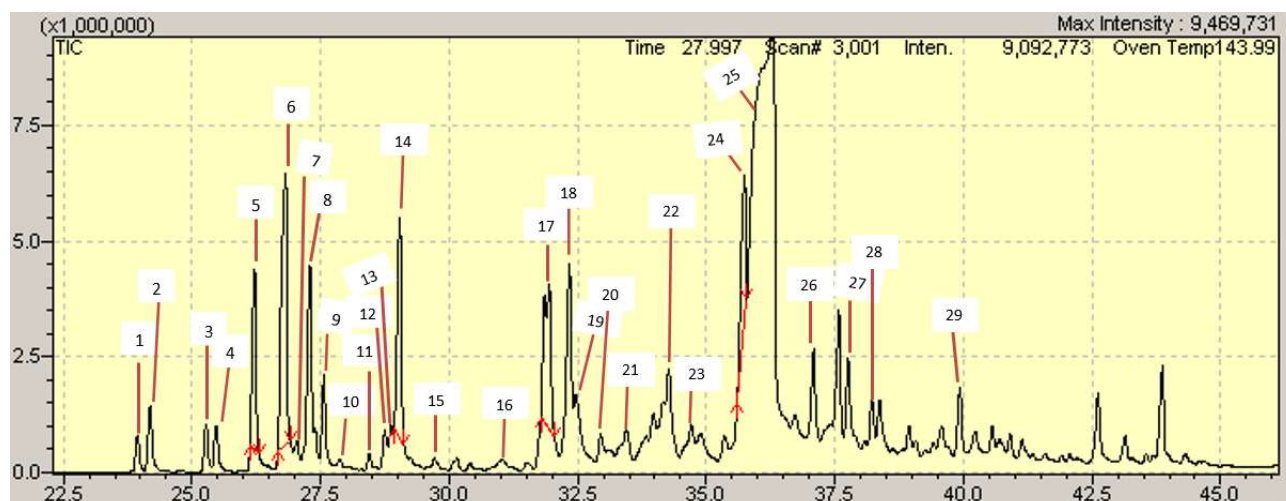


# Supplementary Materials

## Evaluation of the Larvicidal Potential of the Essential Oil *Pogostemon cablin* (Blanco) Benth in the Control of *Aedes aegypti*

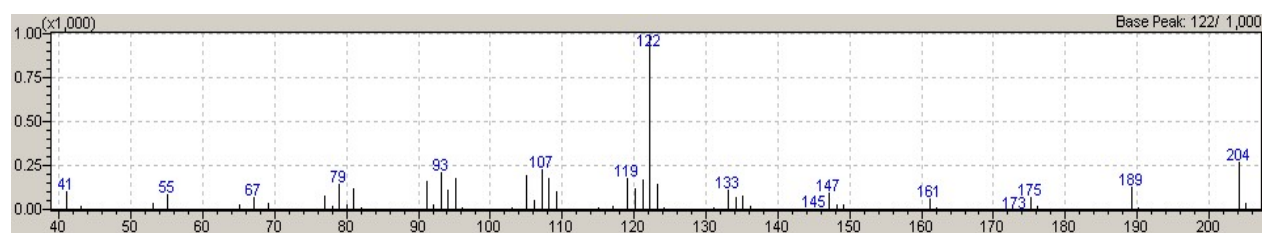
Figure S1. – Chromatogram of *P. cablin* essential oil.



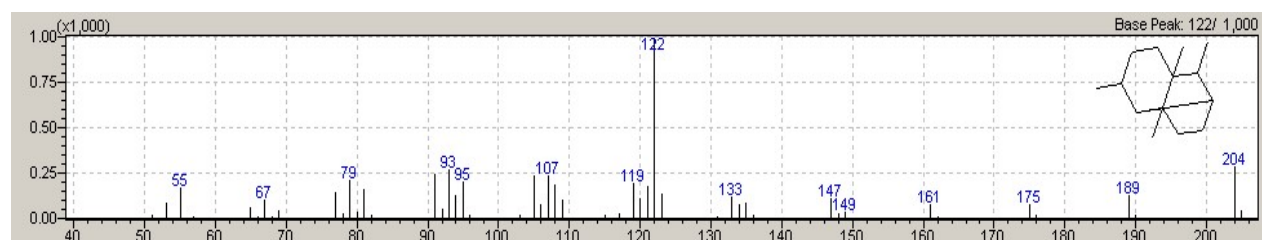
Legend: The numbers of each peak refer to the compound identified in table 1.

Figure S2 - Mass spectra of the major compounds of the essential oil of *P. cablin* by GCMS in comparison with the mass spectra of the equipment library.

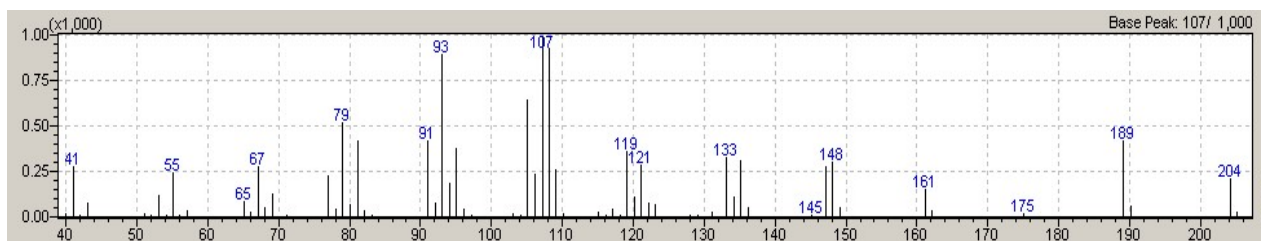
Peak 6 – Substance: Seychellene (Tr 26.817 min)



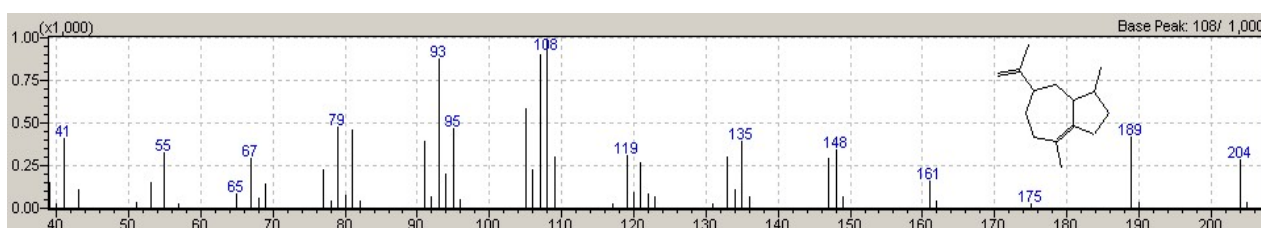
Library Spectrum



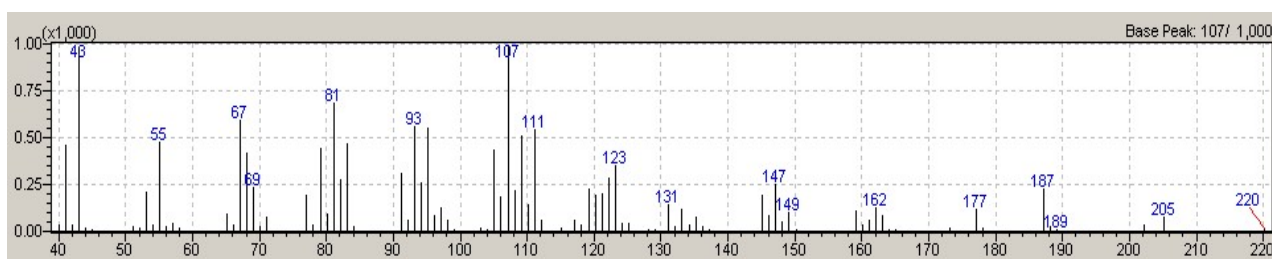
Peak 14 – Substance:  $\alpha$ -bulnesene (Tr 29.042 min)



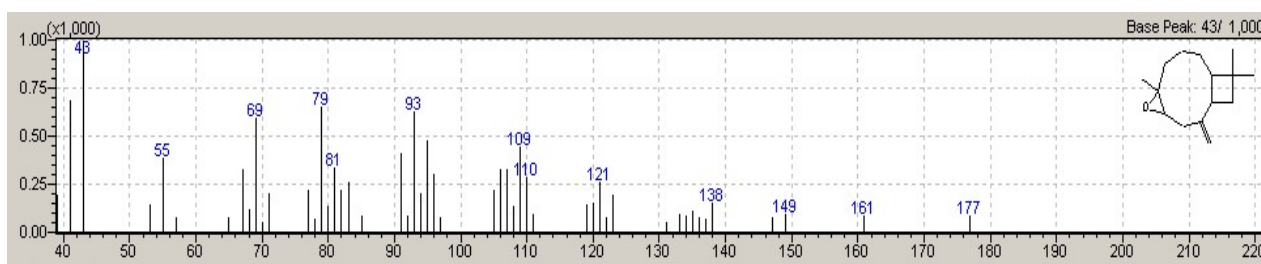
Library Spectrum



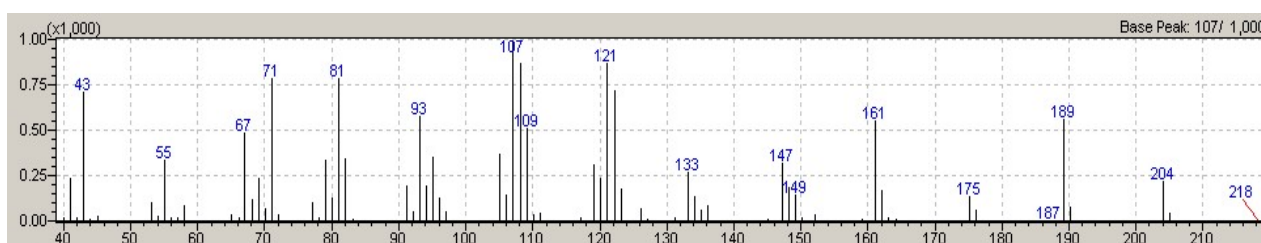
Peak 17 – Substance: Norpatchoulanol (Tr 31.942)



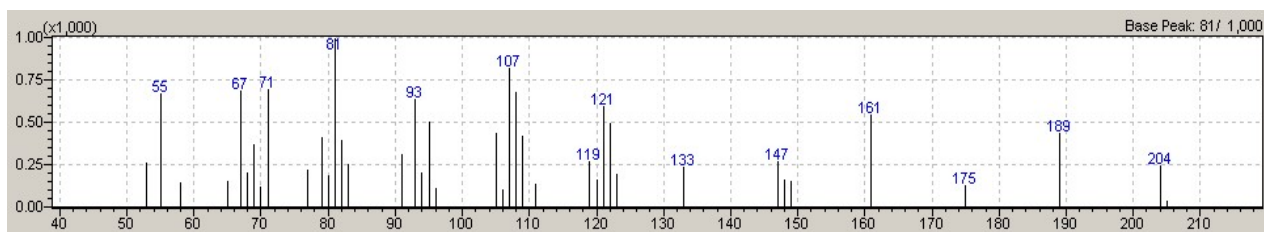
Library Spectrum



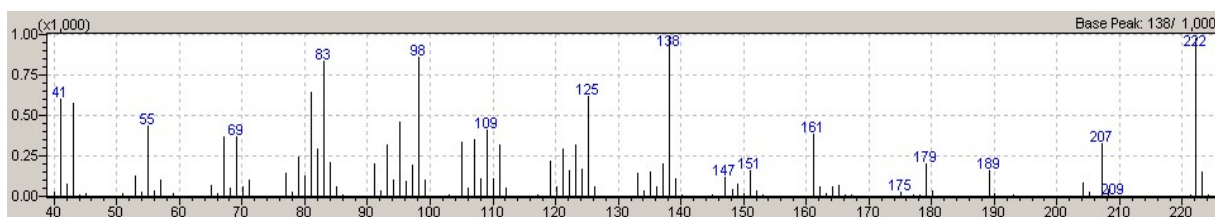
Peak 24 – Substance: Pogostol (Tr 35.742)



Library Spectrum



Peak 25 – Substance: Patchouli alcohol (Tr 36.308)



Library Spectrum

