

Article

Surface Environment and Energy Density Effects on the Detection and Disinfection of Microorganisms Using a Portable Instrument

Sungho Shin ¹, Brianna Dowden ¹, Iyll-Joon Doh ¹, Bartek Rajwa ², Euiwon Bae ³ and J. Paul Robinson ^{1,4,*}

¹ Department of Basic Medical Sciences, Purdue University, West Lafayette, IN 47907, USA; shin331@purdue.edu (S.S.); dowdenb@purdue.edu (B.D.); idoh@purdue.edu (I.-J.D.)

² Bindley Bioscience Center, Purdue University, West Lafayette, IN 47907, USA; brajwa@purdue.edu

³ School of Mechanical Engineering, Purdue University, West Lafayette, IN 47907, USA; ebae@purdue.edu

⁴ Weldon School of Biomedical Engineering, Purdue University, West Lafayette, IN 47907, USA

* Correspondence: jpr@cyto.purdue.edu

Supplementary Materials

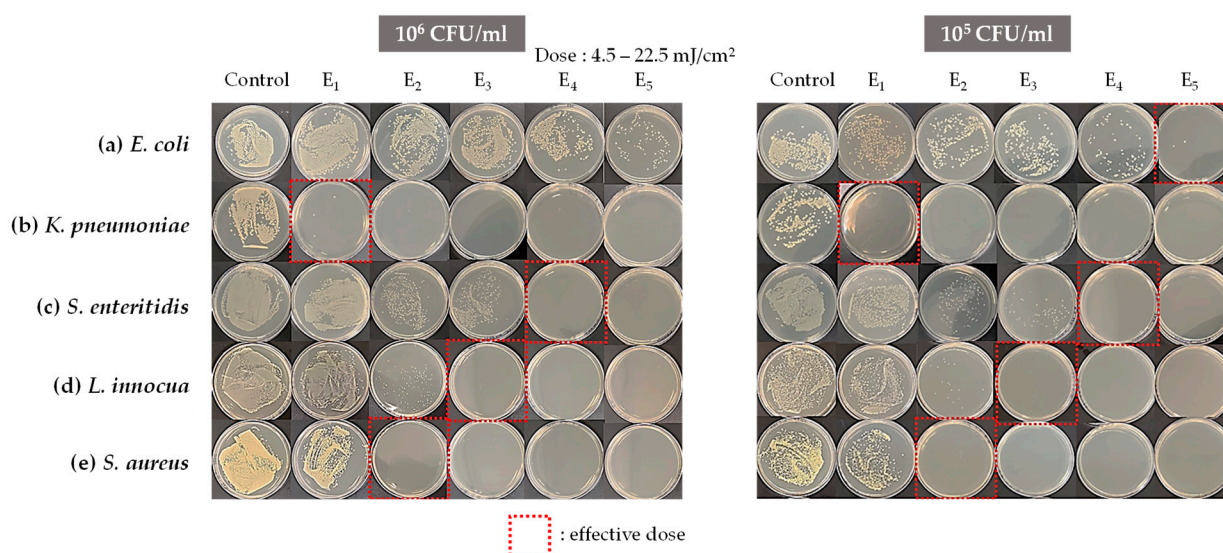


Figure S1. Plate pictures after incubation at two different concentrations (10^6 and 10^5 CFU/ml) for (a) *E. coli*, (b) *K. pneumoniae*, (c) *S. enteritidis*, (d) *L. innocua*, and (e) *S. aureus*.