

Supplementary Materials

Unobstructive Heartbeat Monitoring of Sleeping Infants and Young Children Using Sheet-Type PVDF Sensors

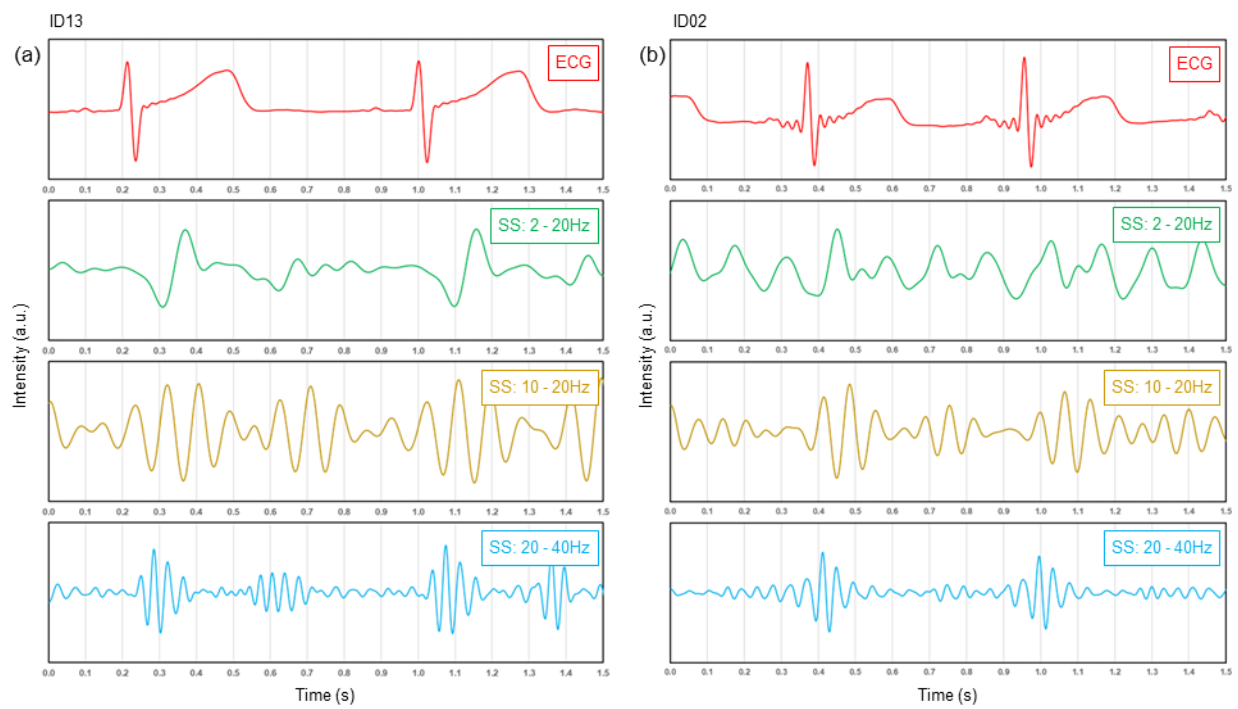
Daisuke Kumaki^{1*}, Yuko Motoshima², Fujio Higuchi¹, Katsuhiro Sato¹, Tomohito Sekine^{1,3}, Shizuo Tokito^{1,3}

¹ Research Center for Organic Electronics, Yamagata University, 4-3-16, Jonan, Yonezawa, Yamagata, 992-8510, Japan

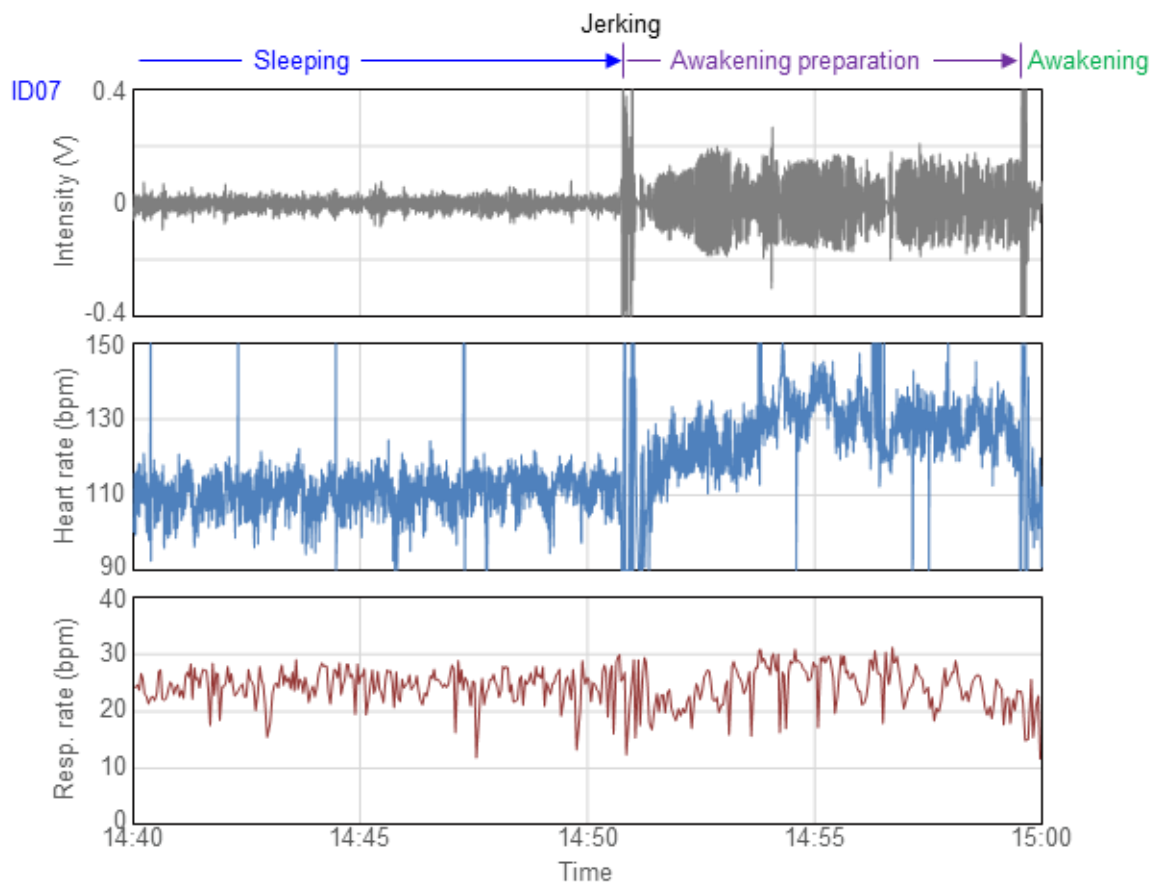
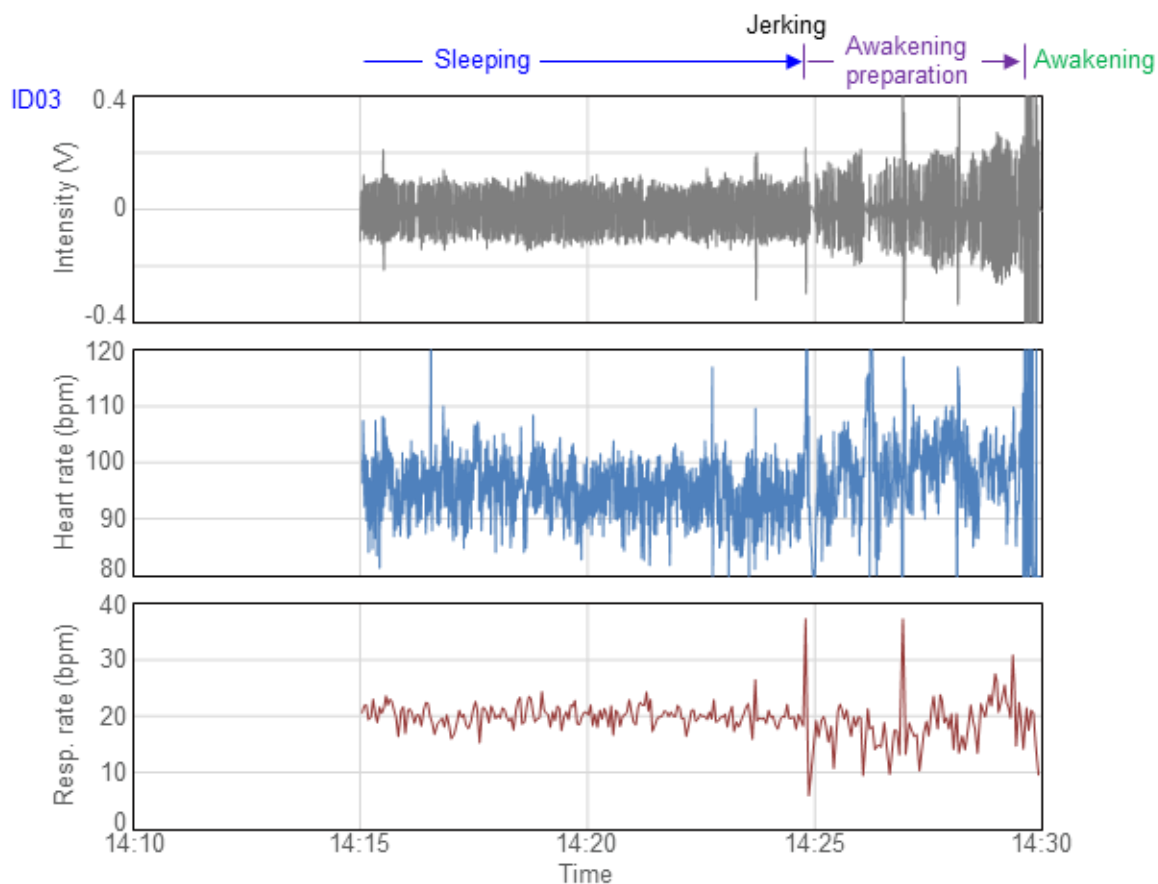
² Faculty of Education, Art and Science, Yamagata University, 1-4-12 Kojirakawa-machi, Yamagata City, Yamagata 990-8560, Japan

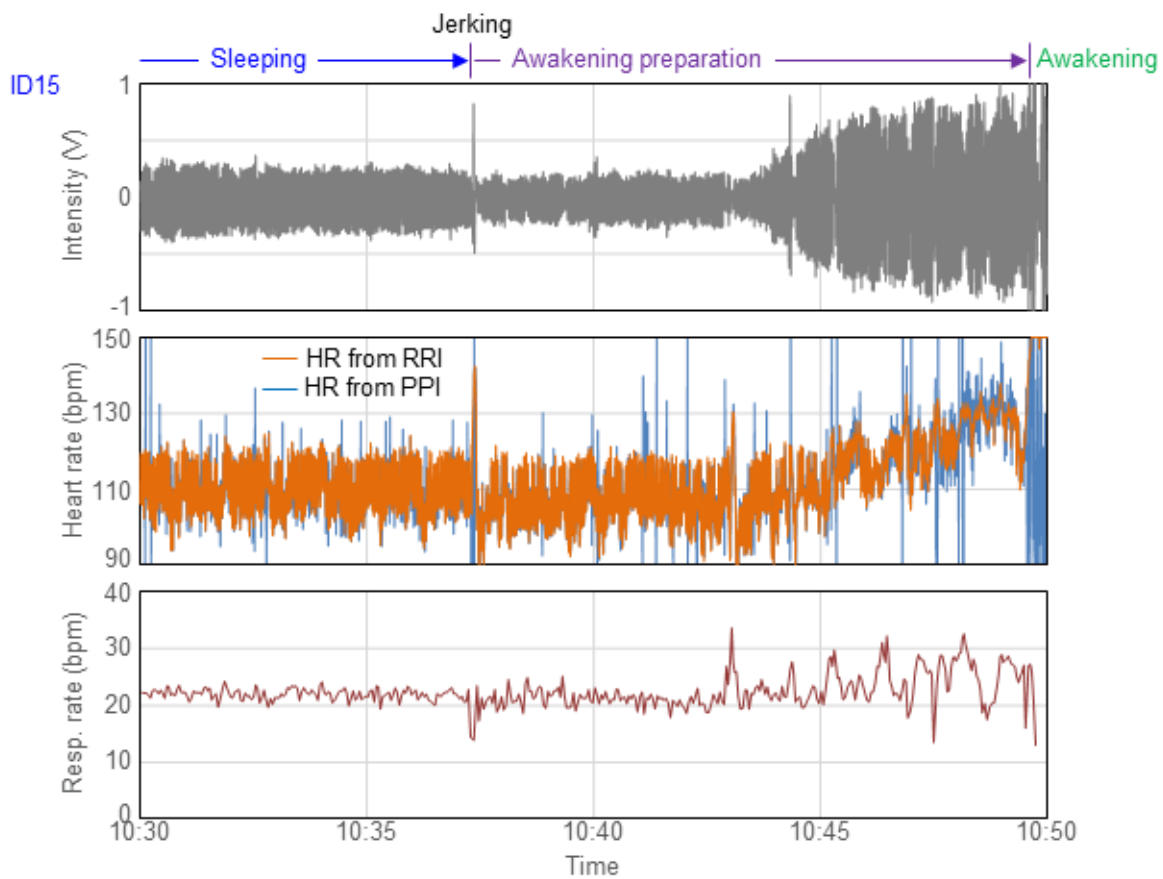
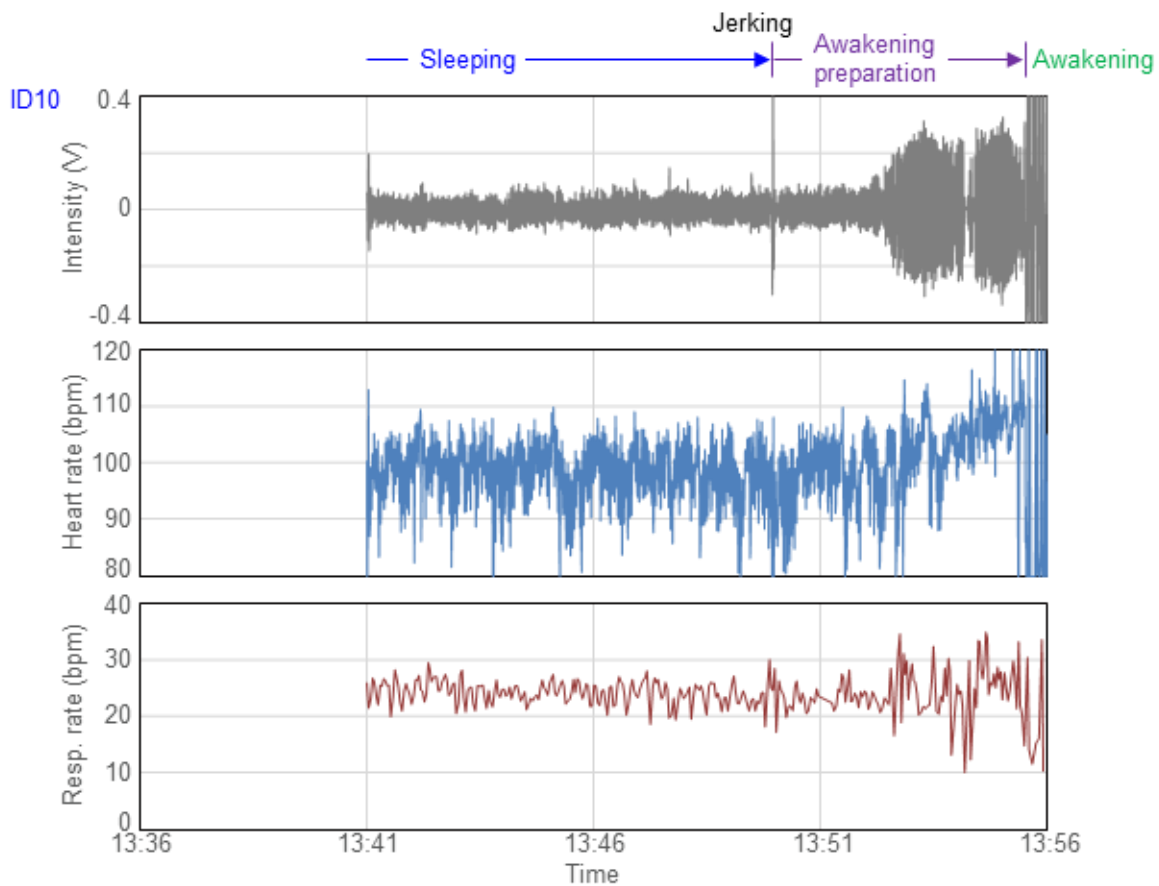
³ Department of Organic Materials Science, Graduate School of Organic Materials Science, Yamagata University, 4-3-16 Jonan, Yonezawa, Yamagata 992-8510, Japan

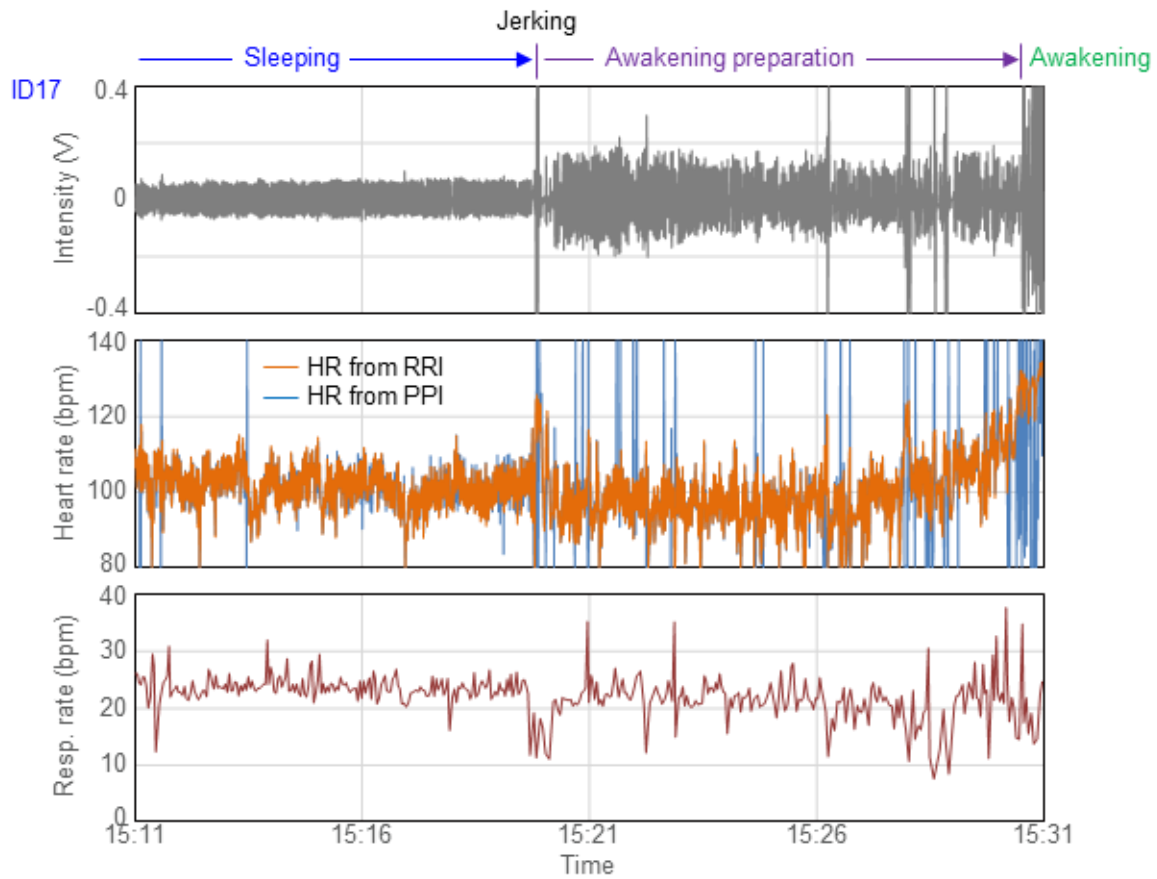
* **Corresponding Author:** E-mail: d_kumaki@yz.yamagata-u.ac.jp



Supplementary Figure S1. Heartbeat waveforms in ECG and sheet sensor for (a) ID13 and (b) ID02.







Supplementary Figure S2. Time dependence of respiration waveform, heart rate, and respiratory rate during awakening preparation stage for ID03, ID07, ID10, ID15, and ID17.