

Supplementary Materials

In the following supplementary section, we present the datasets of the 9 volcanoes analyzed in Section 5. We plotted in Figures S1–S9 both VRP_{VIIRS} and VRP_{MODIS} one-year-long time series, and the weekly values (VRP_w ; black lines) used for the correlation shown in Figure 11.

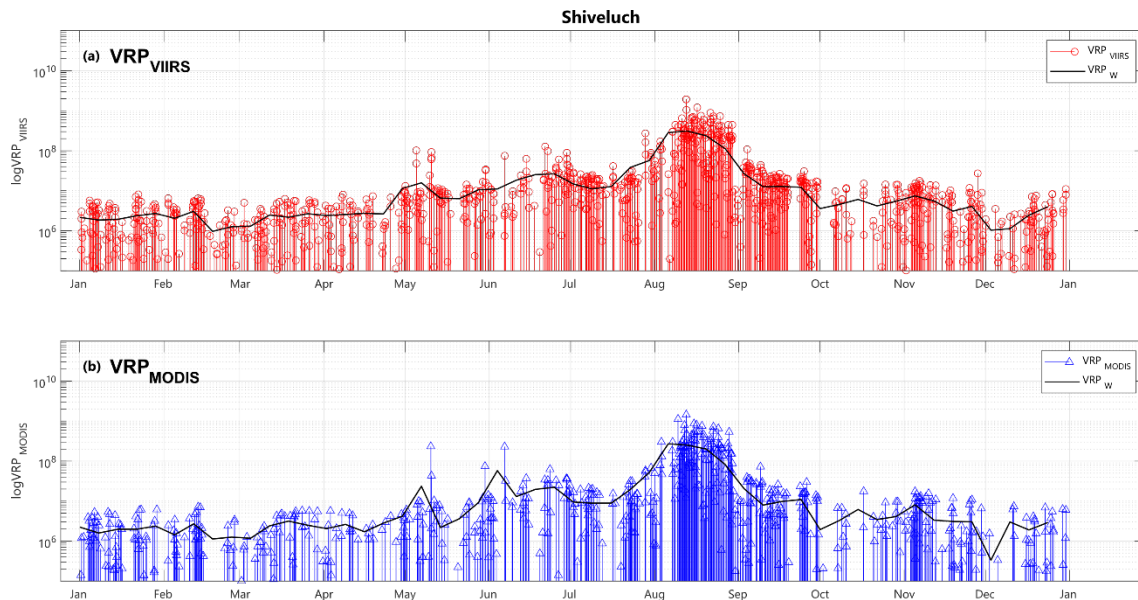


Figure S1. Time series of Shiveluch volcano. The panels show VRP calculated respectively from MIROVA-VIIRS ((a), red circles), MODIS ((b), blue triangles), in logarithmic scale related to the year 2021. The black line represents the weekly-mean VRP values used to evaluate the correlation in Section 5 (Figure 11a).

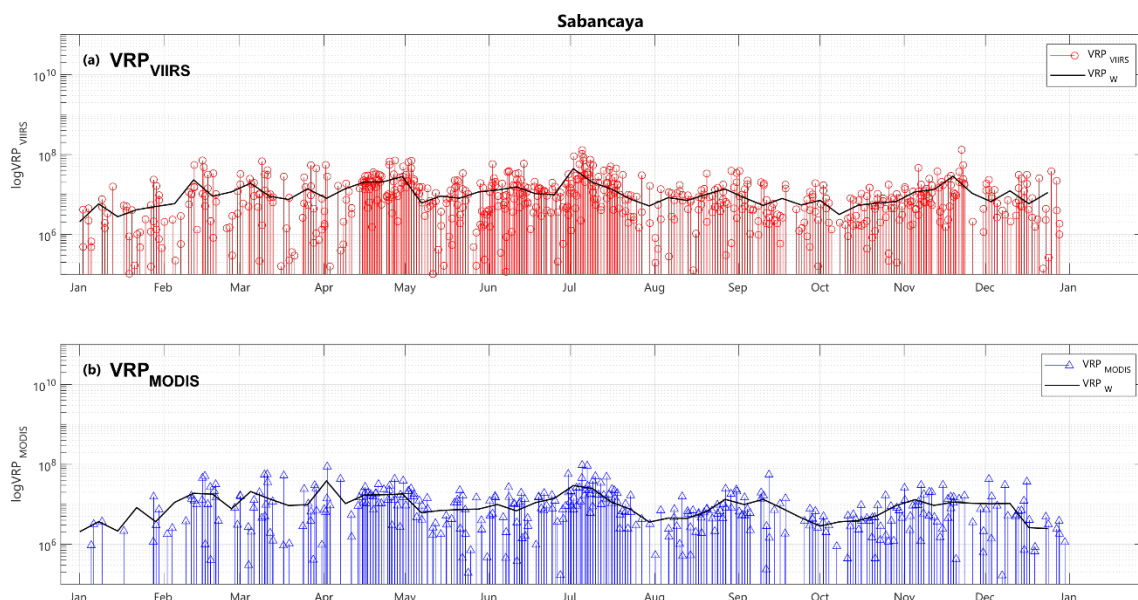


Figure S2. Time series of Sabancaya volcano. The panels show VRP calculated respectively from MIROVA-VIIRS ((a), red circles), MODIS ((b), blue triangles), in logarithmic scale related to the year 2021. The black line represents the weekly-mean VRP values used to evaluate the correlation in Section 5 (Figure 11b).

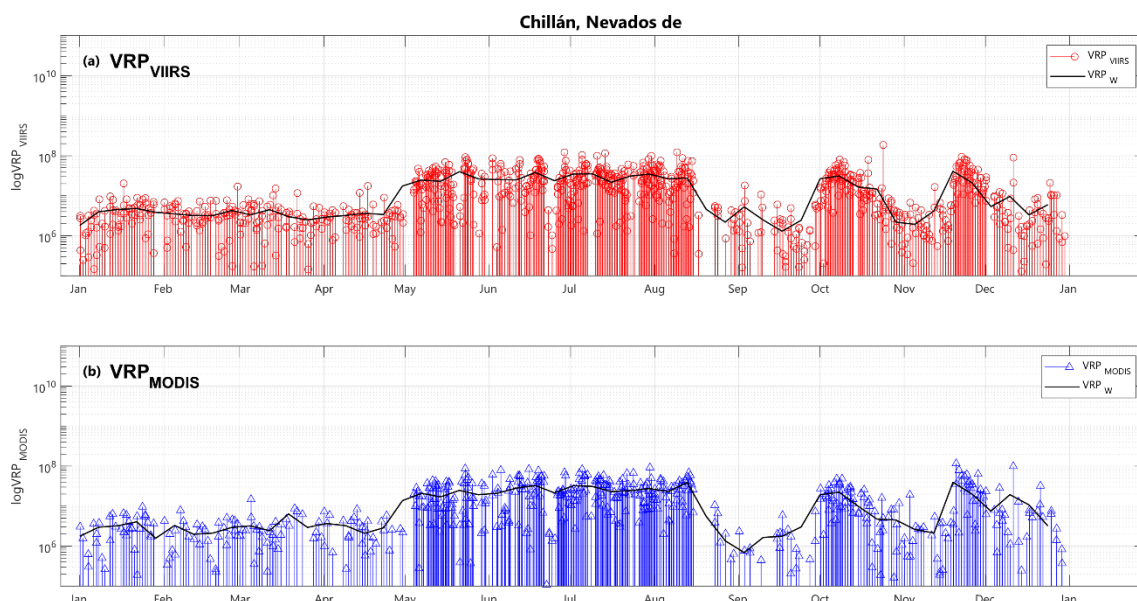


Figure S3. Time series of Nevados de Chillán volcano. The panels show VRP calculated respectively from MIROVA-VIIRS ((a), red circles), MODIS ((b), blue triangles), in logarithmic scale related to the year 2021. The black line represents the weekly-mean VRP values used to evaluate the correlation in Section 5 (Figure 11c).

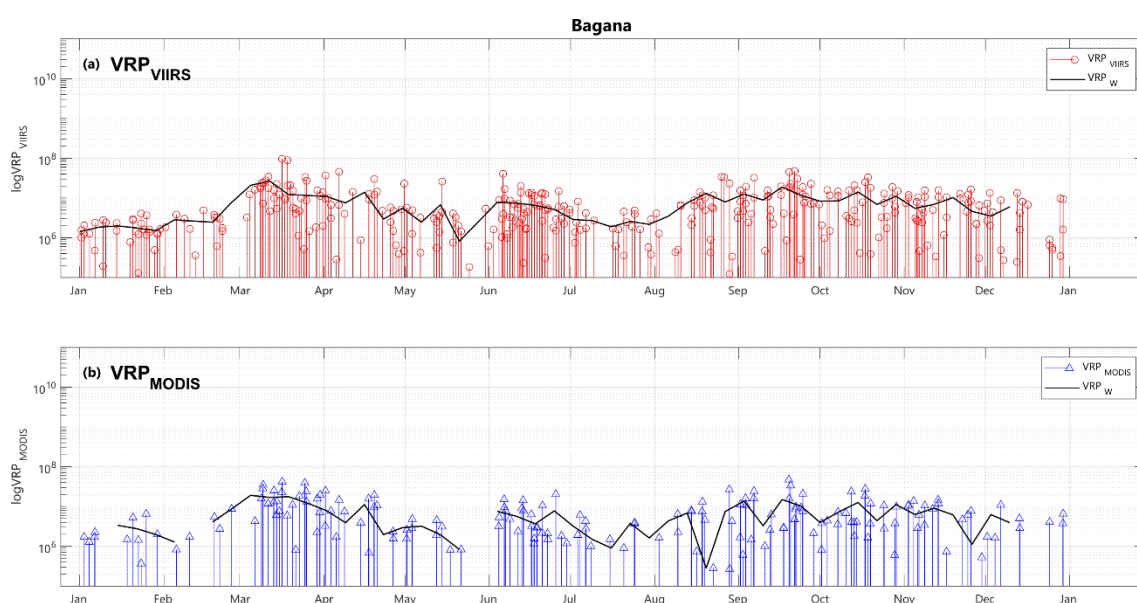


Figure S4. Time series of Bagana volcano. The panels show VRP calculated respectively from MIROVA-VIIRS ((a), red circles), MODIS ((b), blue triangles), in logarithmic scale related to the year 2021. The black line represents the weekly-mean VRP values used to evaluate the correlation in Section 5 (Figure 11d).

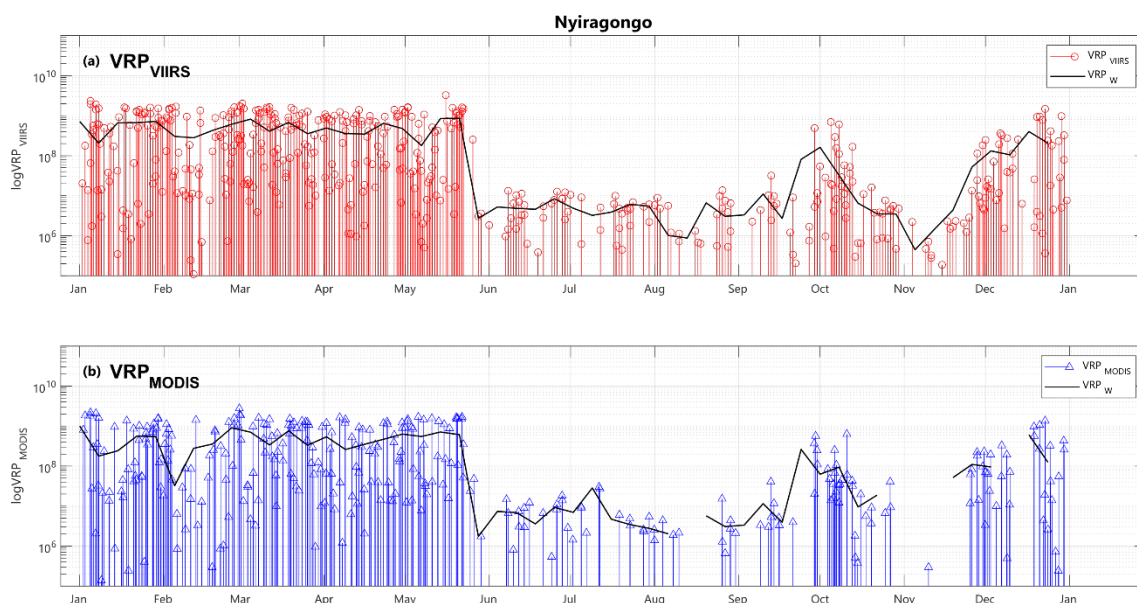


Figure S5. Time series of Nyiragongo volcano. The panels show VRP calculated respectively from MIROVA-VIIRS ((a), red circles), MODIS ((b), blue triangles), in logarithmic scale related to the year 2021. The black line represents the weekly-mean VRP values used to evaluate the correlation in Section 5 (Figure 11e).

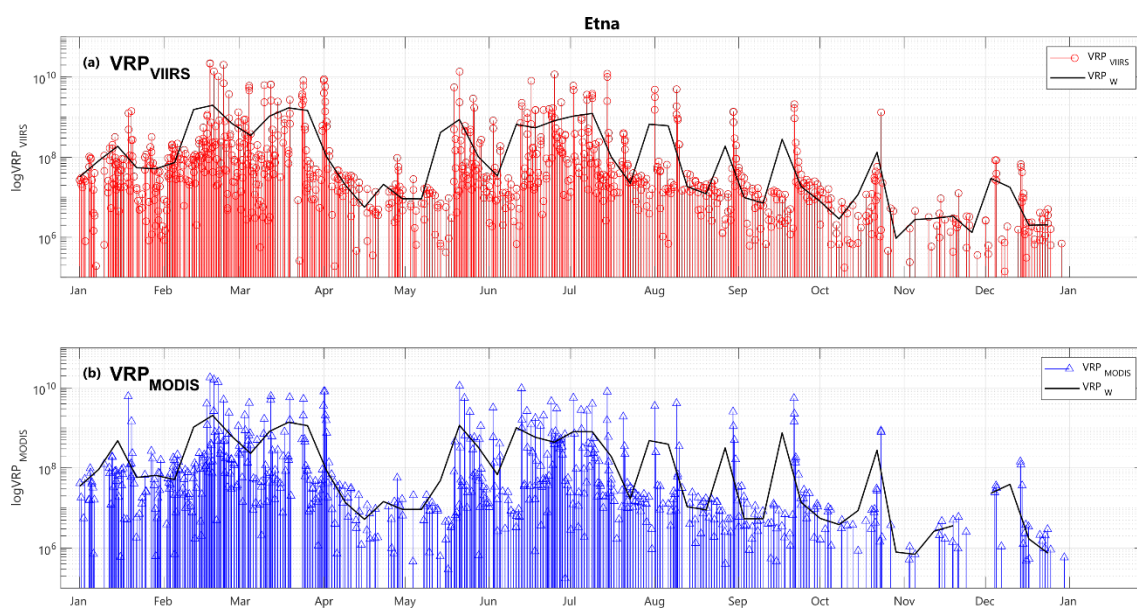


Figure S6. Time series of Etna volcano. The panels show VRP calculated respectively from MIROVA-VIIRS ((a), red circles), MODIS ((b), blue triangles), in logarithmic scale related to the year 2021. The black line represents the weekly-mean VRP values used to evaluate the correlation in Section 5 (Figure 11f).

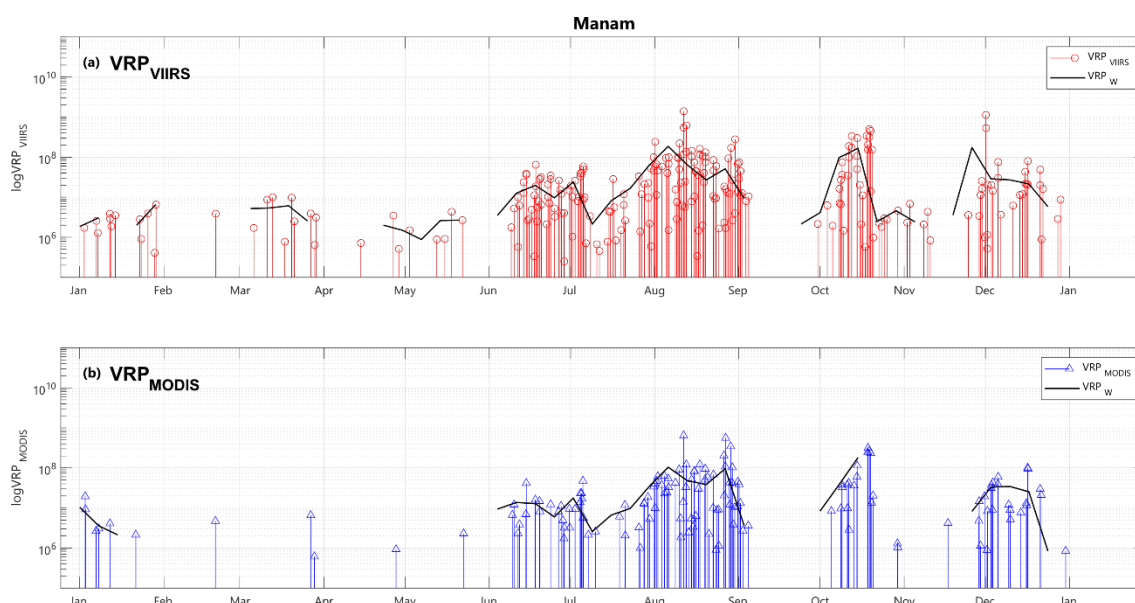


Figure S7. Time series of Manam volcano. The panels show VRP calculated respectively from MIROVA-VIIRS ((a), red circles), MODIS ((b), blue triangles), in logarithmic scale related to the year 2021. The black line represents the weekly-mean VRP values used to evaluate the correlation in Section 5 (Figure 11g).

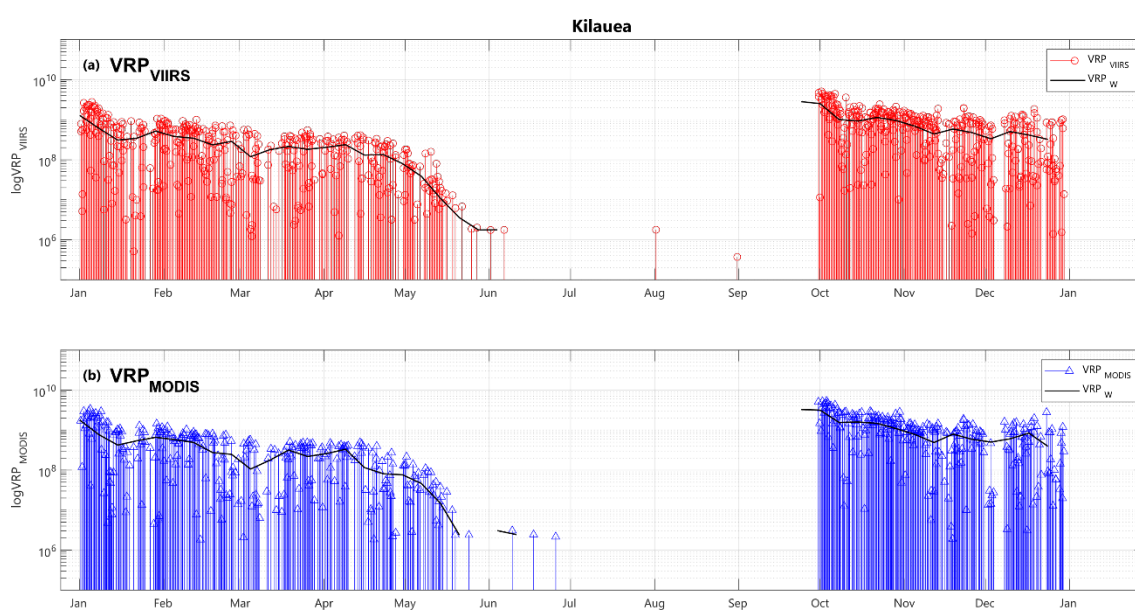


Figure S8. Time series of Kilauea volcano. The panels show VRP calculated respectively from MIROVA-VIIRS ((a), red circles), MODIS ((b), blue triangles), in logarithmic scale related to the year 2021. The black line represents the weekly-mean VRP values used to evaluate the correlation in Section 5 (Figure 11h).

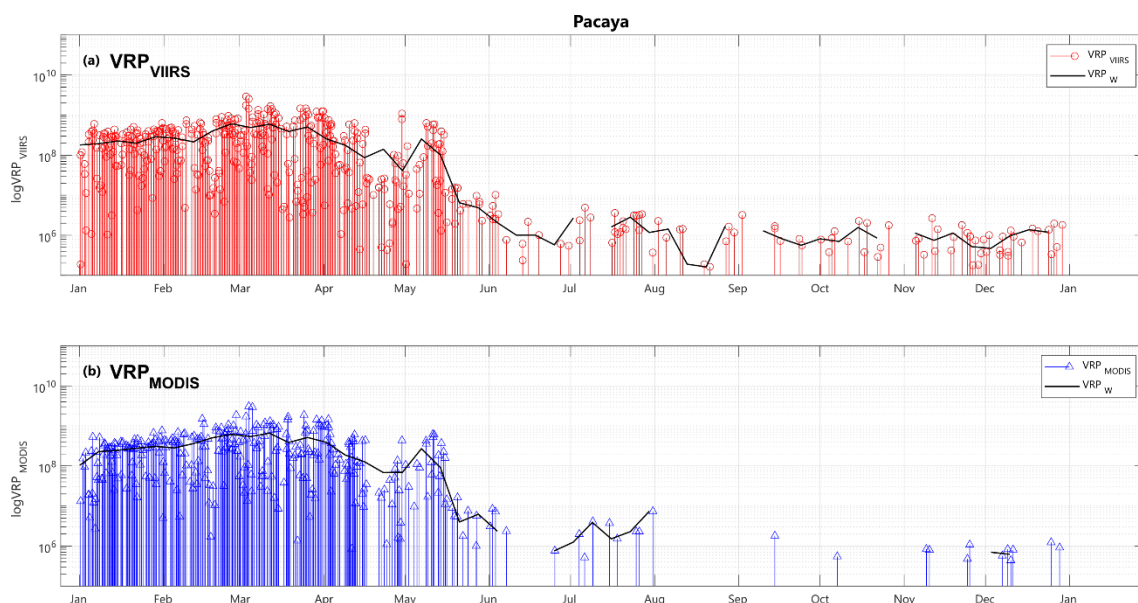


Figure S9. Time series of Pacaya volcano. The panels show VRP calculated respectively from MIROVA-VIIRS ((a), red circles), MODIS ((b), blue triangles), in logarithmic scale related to the year 2021. The black line represents the weekly-mean VRP values used to evaluate the correlation in Section 5 (Figure 11i).