

Supplementary Information for

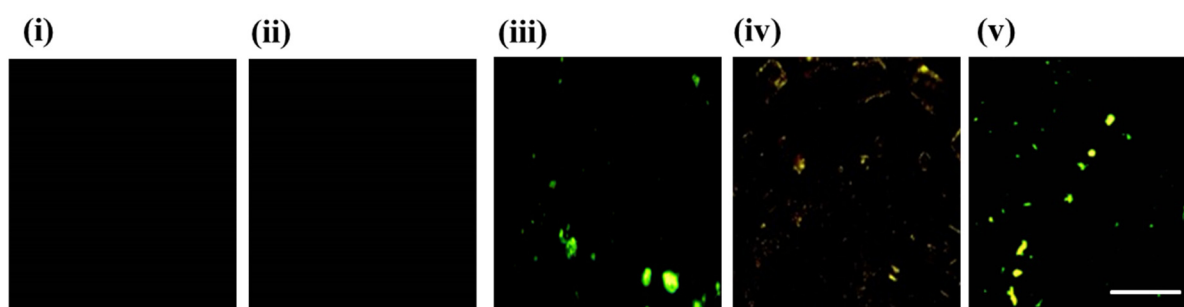
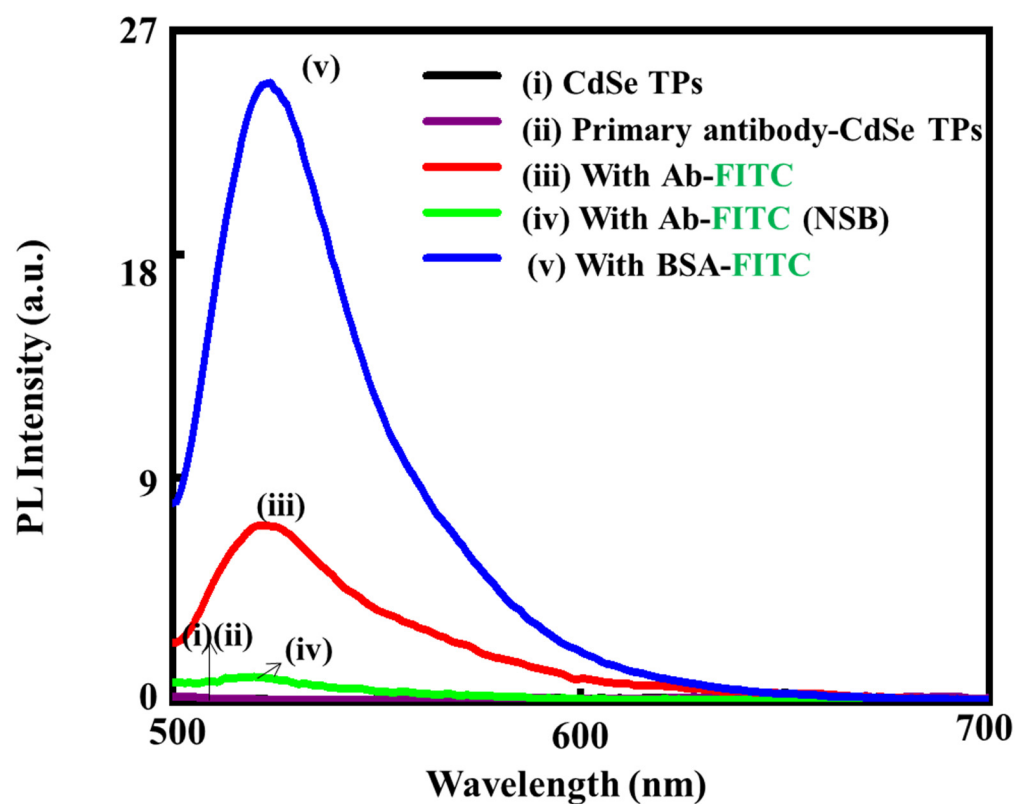
## **Anisotropic CdSe Tetrapods in Vortex Flow for Removing Non-Specific Binding and Increasing Protein Capture**

Hanzhe Liu<sup>1</sup> and Dong June Ahn<sup>1,2\*</sup>

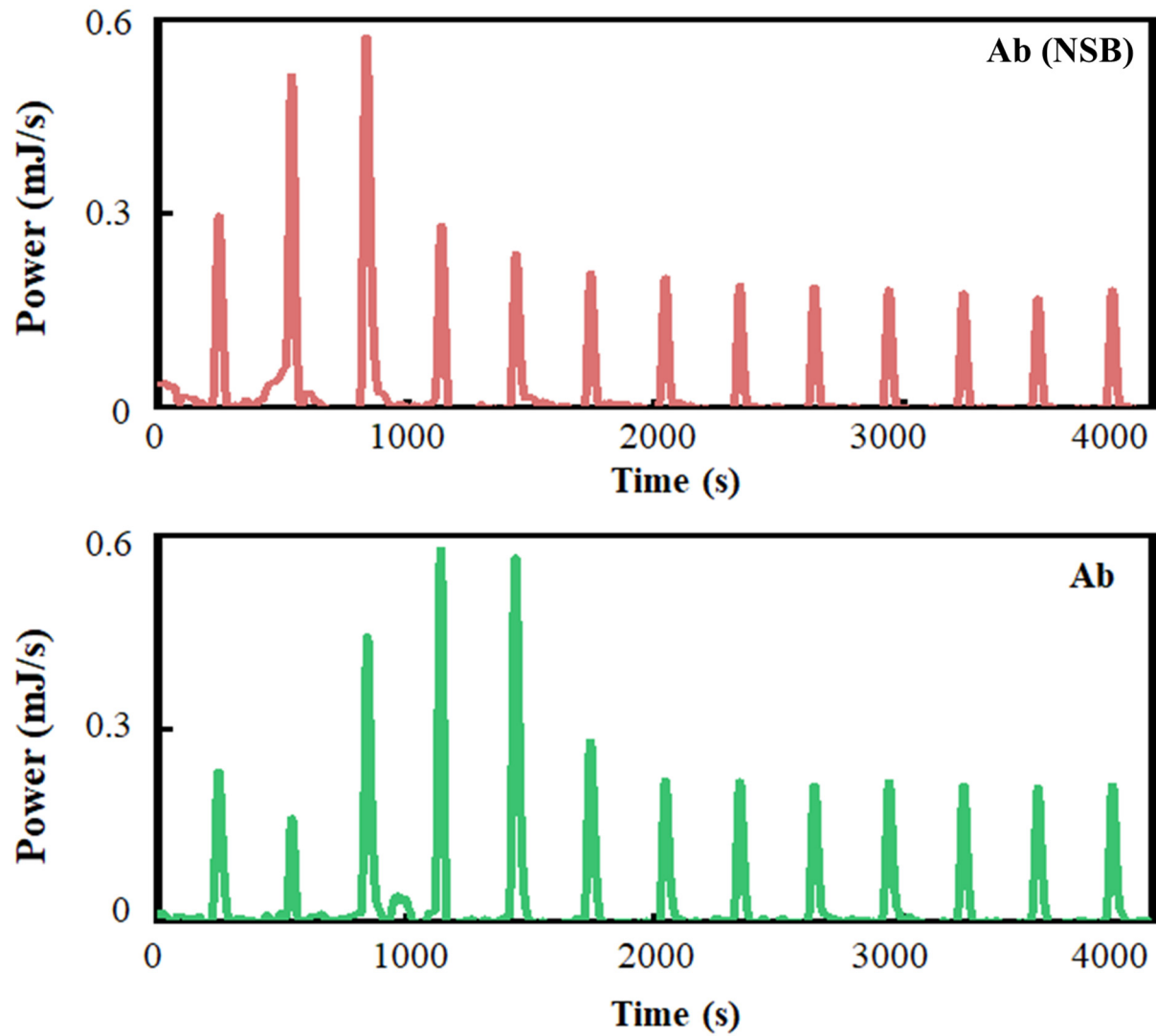
<sup>1</sup>Department of Chemical and Biological Engineering, Korea University, 02841, Seoul, Korea

<sup>2</sup>KU-KIST Graduate School of Converging Science and Technology, Korea University,  
02841, Seoul, Korea

*\* Correspondence and requests for materials should be addressed to D.J.A. (email: ahn@korea.ac.kr).*



**Supplementary Fig. S1 CdSe TP complexes with various proteins.** **a**, PL spectra of CdSe TPs, modified with different antibodies at 488 nm excitation. **b**, The images acquired under a fluorescence microscope present CdSe TPs (i), Ab-CdSe TPs (ii), Ab-CdSe TPs with antibody (iii), Ab-CdSe Tps with Antibody (NSB) (v), and Ab-CdSe TPs with BSA (iv). Scale bar is 5  $\mu\text{m}$ .



**Supplementary Fig. S2 Isothermal titration calorimetry (ITC) analyses of probe-target complex. a,** ITC measurement between antibody (NSB) and probe Ab. **b,** ITC measurement between target antibody and probe Ab.