

Supplementary Material

# Mapping of Agricultural Subsurface Drainage Systems Using Unmanned Aerial Vehicle Imagery and Ground Penetrating Radar <sup>†</sup>

Triven Koganti <sup>1,\*</sup>, Ehsan Ghane <sup>2</sup>, Luis Rene Martinez <sup>3</sup>, Bo V. Iversen <sup>1</sup> and Barry J. Allred <sup>3</sup>

<sup>1</sup> Department of Agroecology, Aarhus University, Blichers Allé 20, Tjele 8830, Denmark; bo.v.iversen@agro.au.dk

<sup>2</sup> Department of Biosystems and Agricultural Engineering, Michigan State University, East Lansing, Michigan 48824, USA; ghane@msu.edu

<sup>3</sup> USDA/ARS Soil Drainage Research Unit, 590 Woody Hayes Drive, Columbus, Ohio 43210, USA; luis.martinez@usda.gov (L.R.M.); barry.allred@ars.usda.gov (B.J.A.)

\* Correspondence: triven.koganti@agro.au.dk; Tel.: +45 91732010

<sup>†</sup> This paper is an extended version of the conference paper: Koganti, T.; Ghane, E.; Martinez, L.R.; Iversen, B.V.; Allred, B.J. Mapping Subsurface Drainage in Agricultural Areas Using Unmanned Aerial Vehicle Imagery and Ground Penetrating Radar. In Proceedings of the 1st Indian Near Surface Geophysics Conference & Exhibition, New Delhi, India, 28–29 November 2019; pp. 76–80.

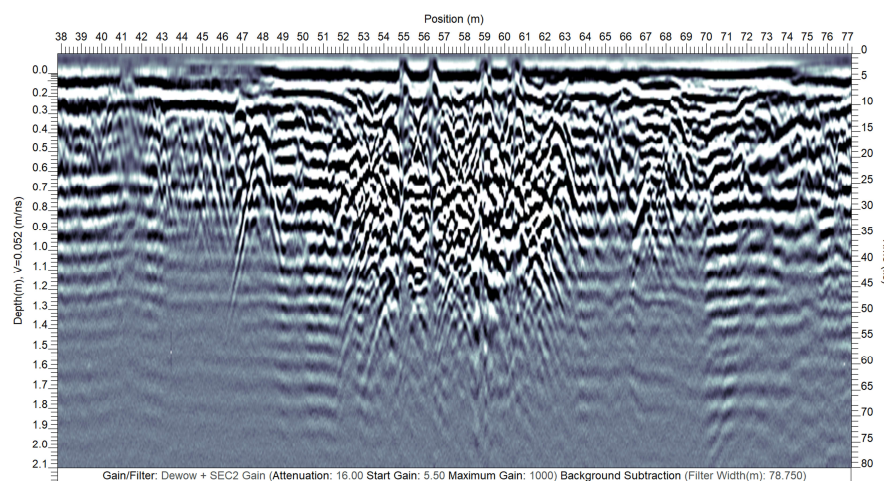
**Citation:** Koganti, T.; Ghane, E.; Martinez, L.R.; Iversen, B.V.; Allred, B.J. Mapping of Agricultural Subsurface Drainage Systems Using Unmanned Aerial Vehicle Imagery and Ground Penetrating Radar <sup>†</sup>. *Sensors* **2021**, *21*, 2800. <https://doi.org/10.3390/s21082800>

Academic Editor: Asim Biswas

Received: 29 March 2021

Accepted: 13 April 2021

Published: 15 April 2021



**Figure S1.** GPR profile from the survey transect overlying the railway crossing at Site-4.

**Publisher's Note:** MDPI stays neutral with regard to jurisdictional claims in published maps and institutional affiliations.



**Copyright:** © 2021 by the authors. Submitted for possible open access publication under the terms and conditions of the Creative Commons Attribution (CC BY) license (<http://creativecommons.org/licenses/by/4.0/>).