

# Isoprene Gas Sensor Based on (001) Faceted Hexagonal $WO_3$

Owen O. Abe <sup>1</sup>, Zanlin Qiu <sup>1</sup>, Joerg R. Jinschek <sup>1</sup>, and Pelagia-Irene Gouma <sup>1,2,\*</sup>

<sup>1</sup> Department of Materials Science and Engineering, The Ohio State University, Columbus, OH 43202, USA; abe.24@osu.edu (O.A); qiu.512@osu.edu (Z.Q); jinschek.1@osu.edu (J.J); gouma.2@osu.edu (P.G.)

<sup>2</sup> Department of Mechanical and Aerospace Engineering, The Ohio State University, Columbus, OH 43202, USA; gouma.2@osu.edu

\* Correspondence: gouma.2@osu.edu (P.G); Tel.: +1-614-292-4391

*Supplemental*

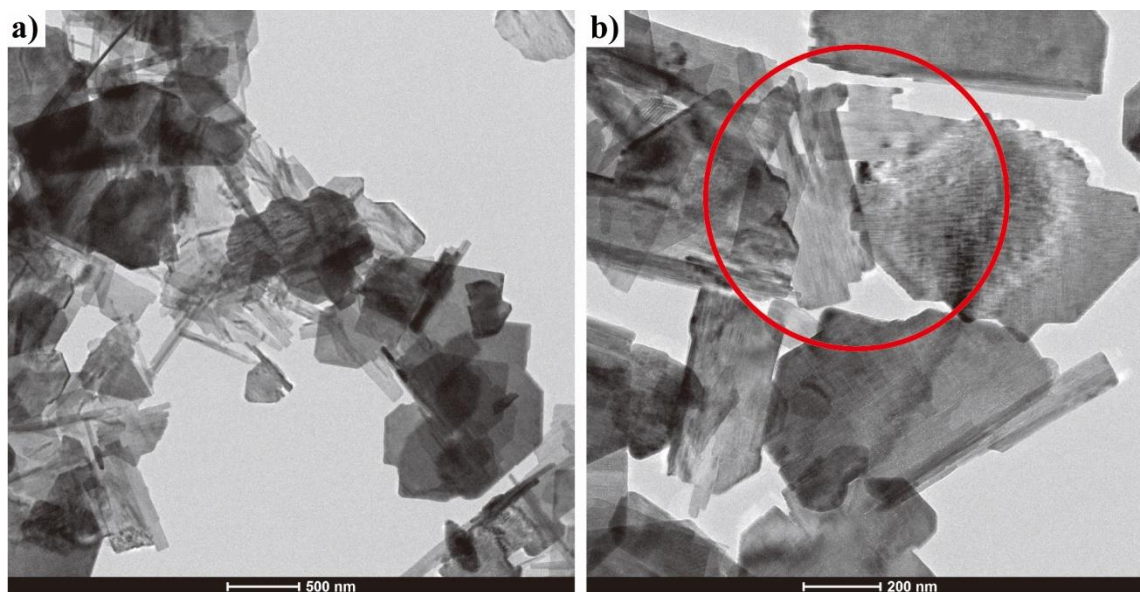


Figure S1 (a) and (b) TEM images of the  $Na_2WO_4 \cdot 2H_2O$  sample under different magnification. The red region in Figure S1(b) contains polytypic features.