

Supplementary Figures

Non-destructive analytical investigation of decorative wallpapers samples of the nineteenth century before their restoration.

Ilaria Costantini¹, Kepa Castro¹, Maria Dolores Rodriguez-Laso², Juan Manuel Madariaga¹, Gorka Arana¹.

¹ Department of Analytical Chemistry, Faculty of Science and Technology, University of the Basque Country UPV/EHU, P.O. Box 644, 48080 Bilbao, Basque Country, Spain.

E-mail: ilaria.costantini@ehu.eus

² Department of Painting, University of the Basque Country, P.O. Box 644, 48080 Bilbao, Spain



Figure S1. Details of wallpaper representing upholstery.

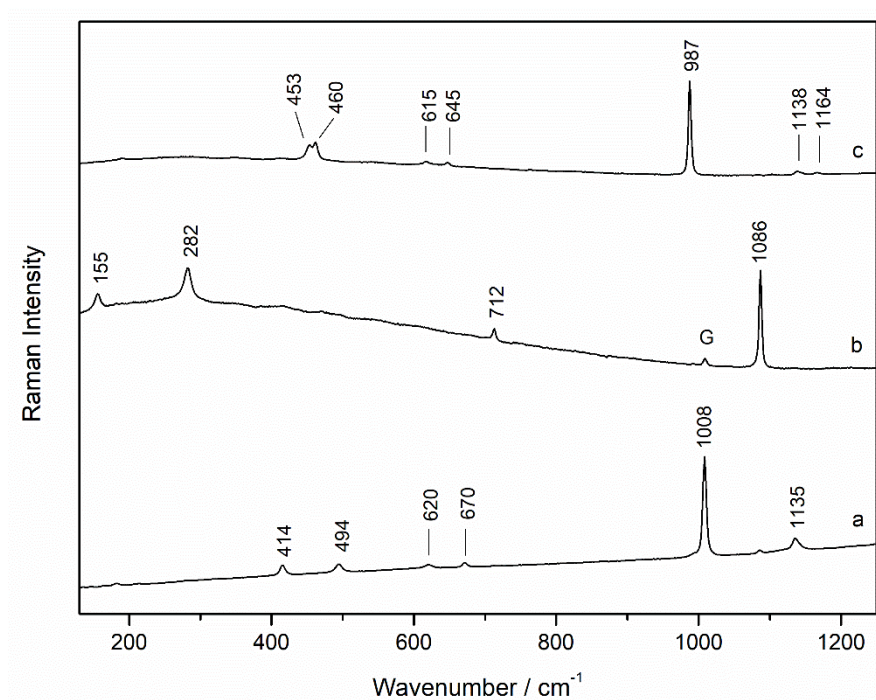


Figure S2. Raman spectra of (a) gypsum, (b) calcite plus gypsum (G) and (c) barium sulfate (785 nm excitation laser) from a white area (samples wp4).

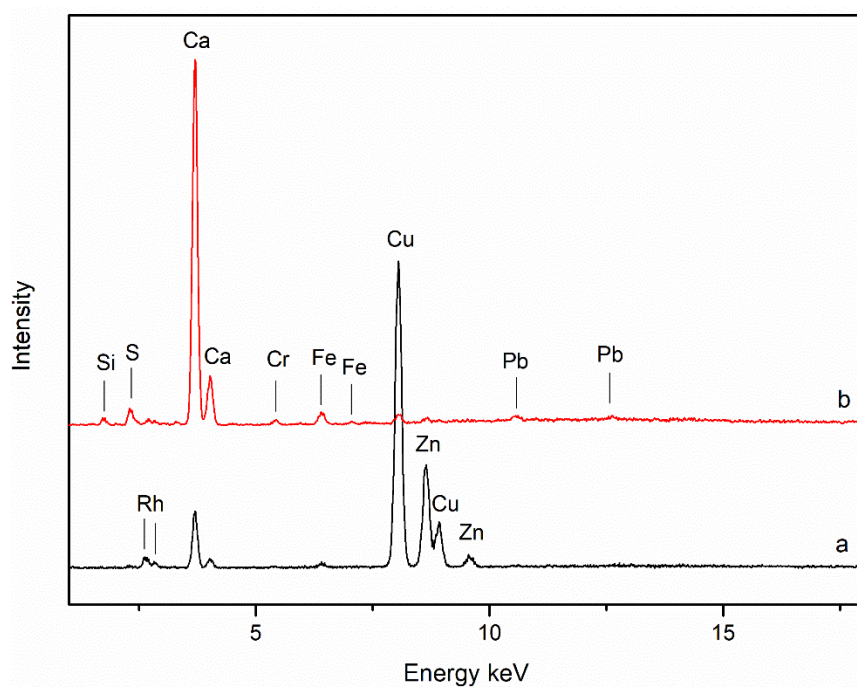


Figure S3. Micro-EDXRF spectra collected in a circular area (a) and in a grey area (b) (sample wp4).

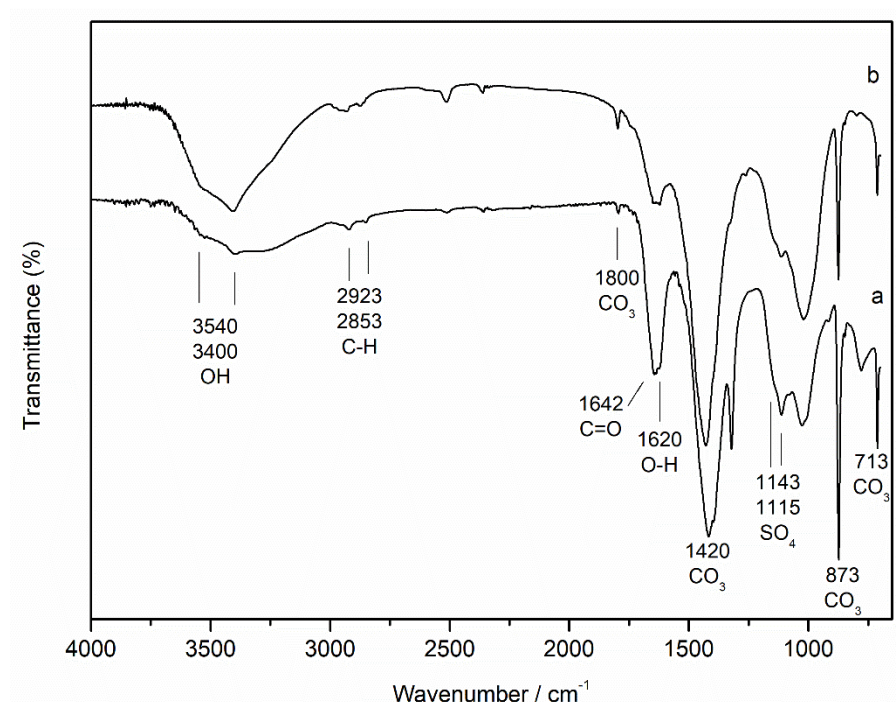


Figure S4. ATR-FTIR spectrum taken from the back side of decorative wallpapers (a) and from a purple area (b) (sample wp3).

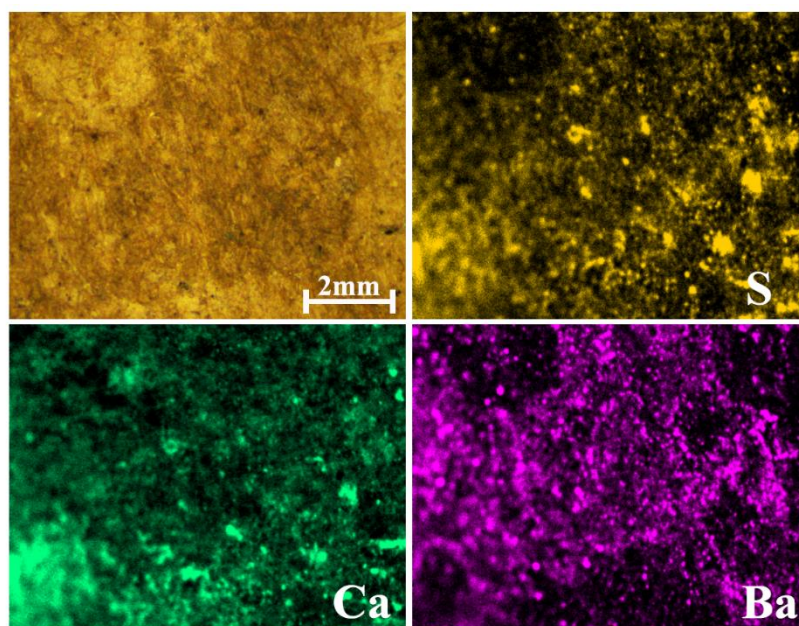


Figure S5. Micro-EDXRF maps from the degraded paper support (sample wp5).