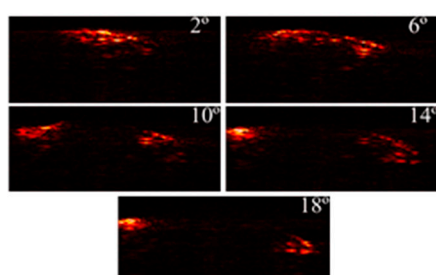
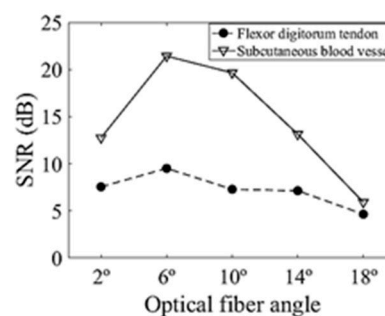


Supplementary

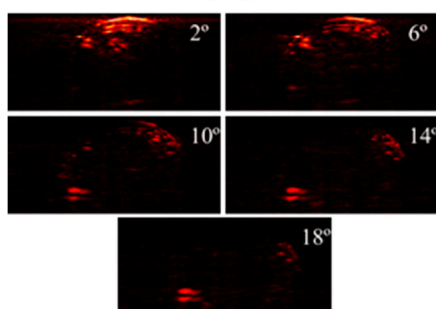
Multangle Long-Axis Lateral Illumination Photoacoustic Imaging Using Linear Array Transducer



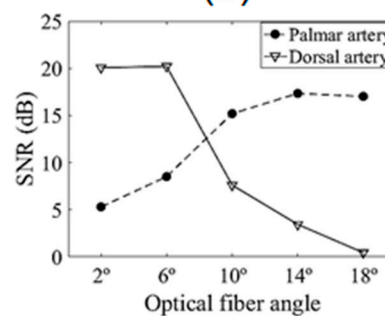
(a)



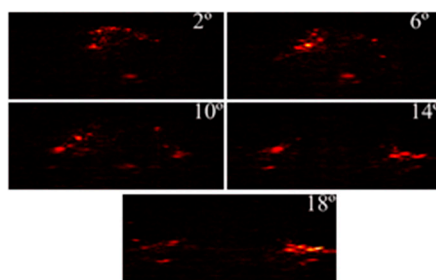
(b)



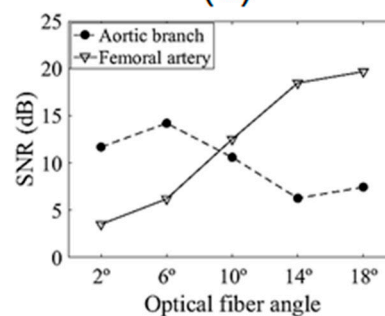
(c)



(d)



(e)



(f)

Figure S1. Subframes acquired at each illumination angle used to generate the *in vivo* PA images shown in Fig. 11 of the main article for the (a) forearm, (c) index finger, and (e) mouse abdomen. SNR as a function of illumination angle for each subframe of selected structures located at the (b) forearm, (d) index finger, and (f) mouse abdomen.