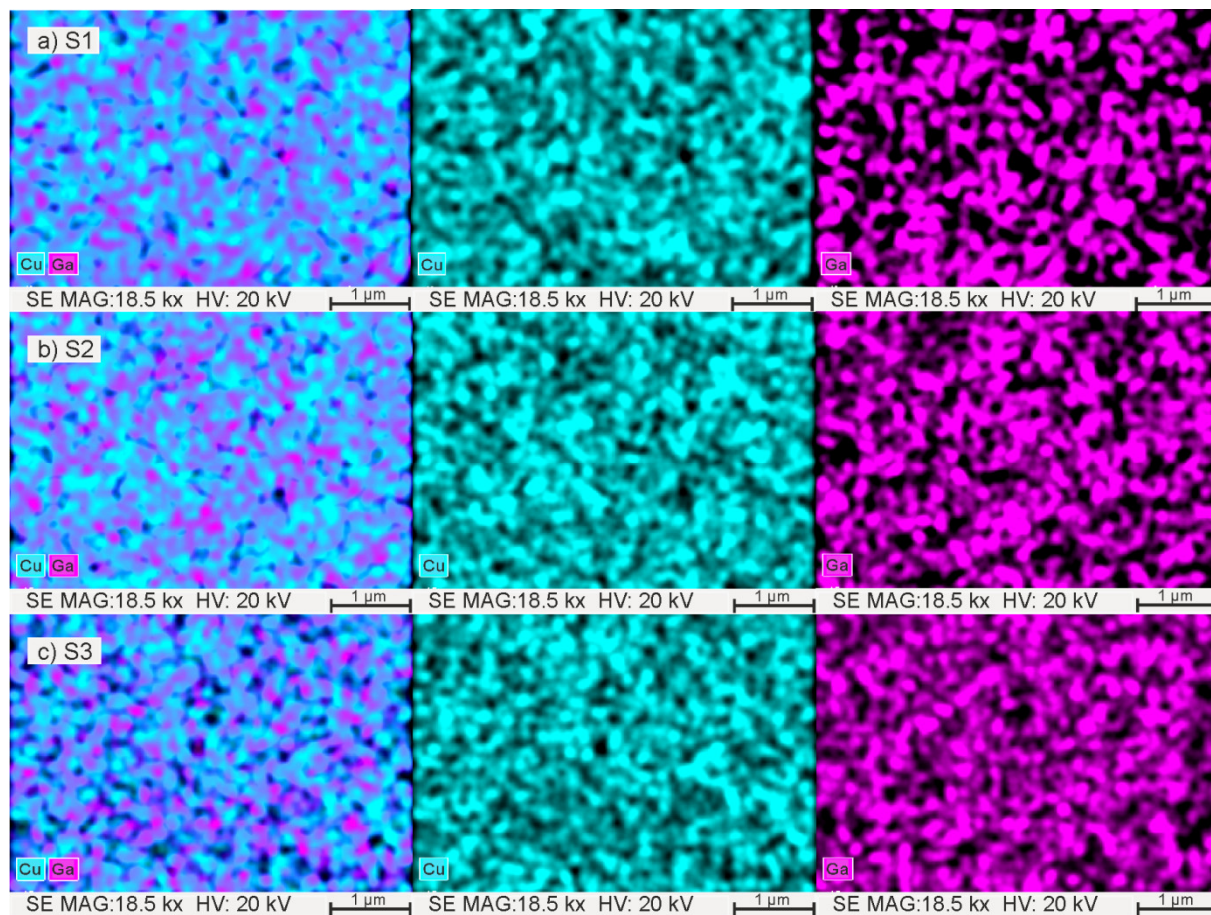


## Supplementary Materials for CuO-Ga<sub>2</sub>O<sub>3</sub> Thin Films as a Gas-sensitive Material for Acetone Detection



**Figure S1.** Gallium/copper concentrations: (a) distribution map of sample S1 for Cu and Ga elements, (b) distribution map of sample S2 for Cu and Ga elements, (c) distribution map of sample S3 for Cu and Ga elements.