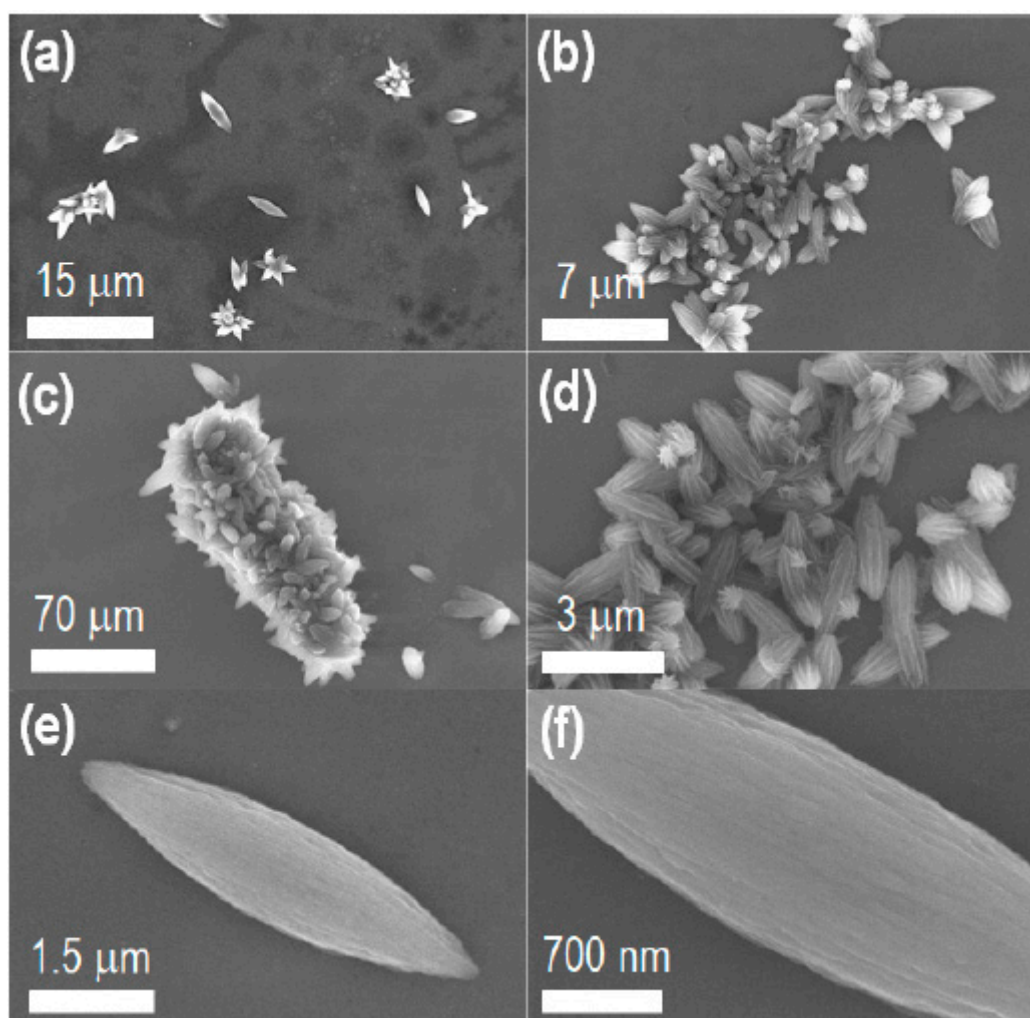


Article

# Self-Assembled Fullerene Crystals as Excellent Aromatic Vapor Sensors

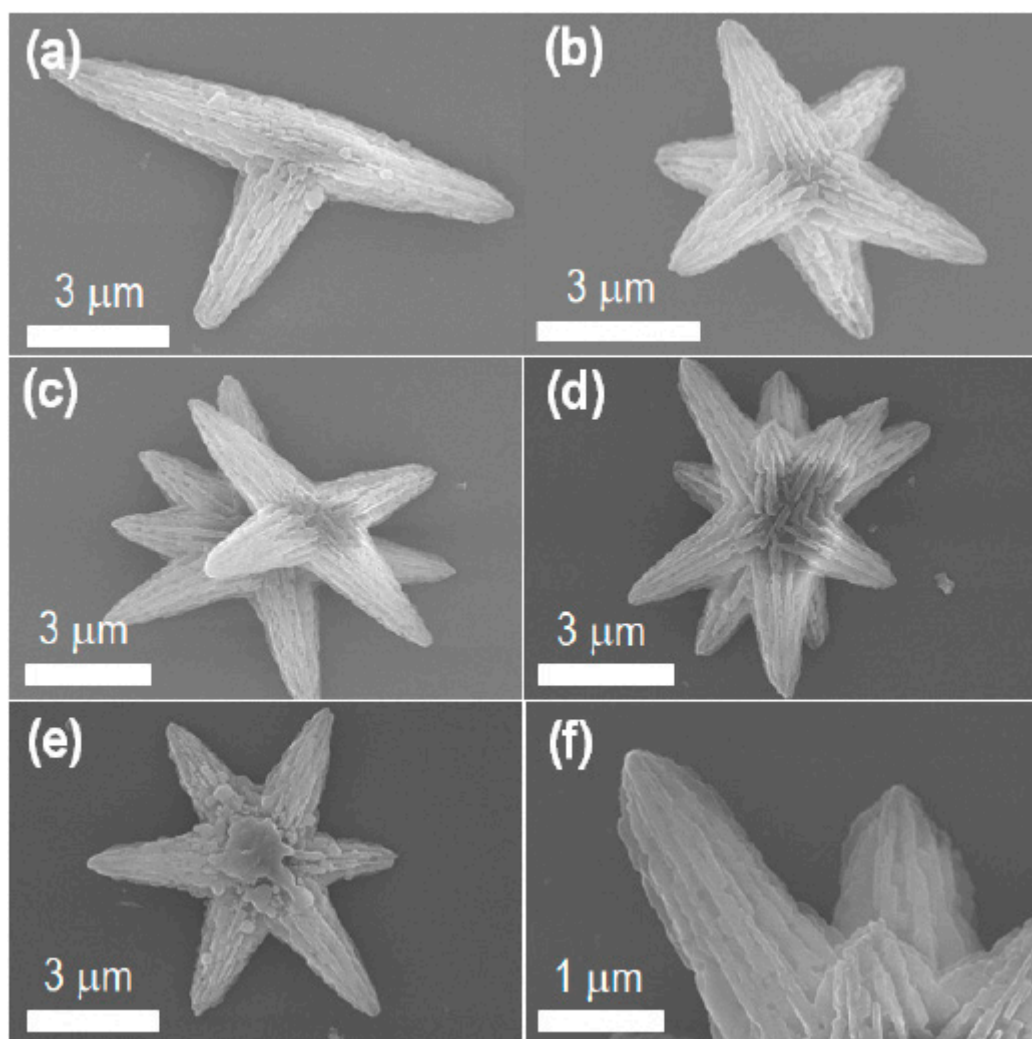
Natsumi Furuuchi <sup>1</sup>, Rekha Goswami Shrestha <sup>2</sup>, Yuji Yamashita <sup>1</sup>, Tetsuji Hirao <sup>1</sup>, Katsuhiko Ariga <sup>2,3</sup> and Lok Kumar Shrestha <sup>2,\*</sup>

## 1. SEM images of as-prepared fullerene crystals



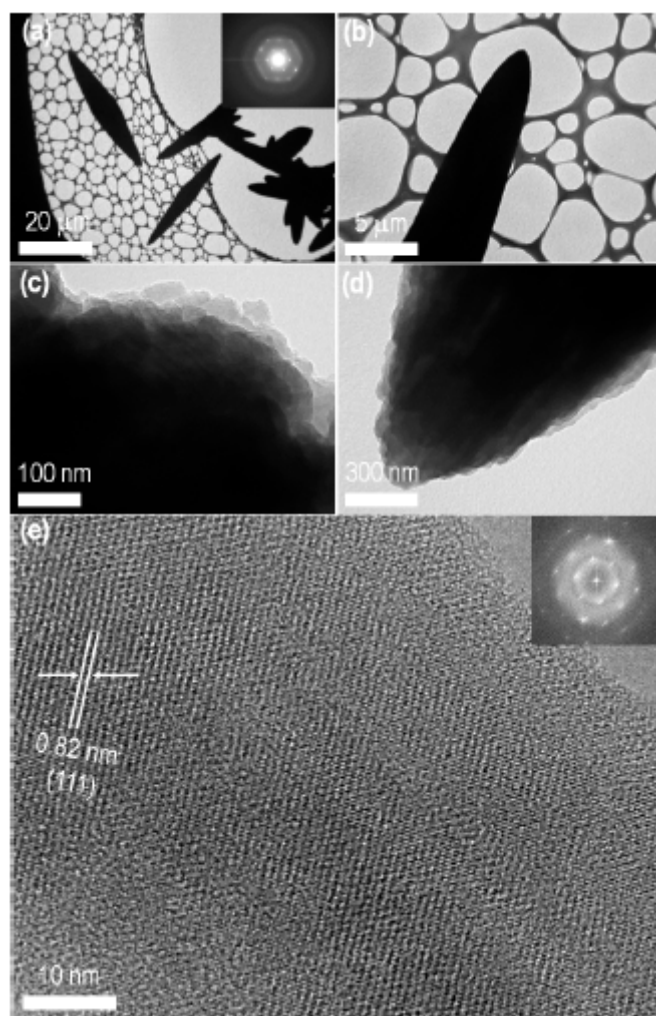
**Figure S1.** SEM images of as prepared C60 crystal before washing: **(a-d)** Low magnification SEM images showing the aggregated structure; **(e-f)** High magnification SEM images.

## 2. Additional SEM images of fullerene crystals after washing



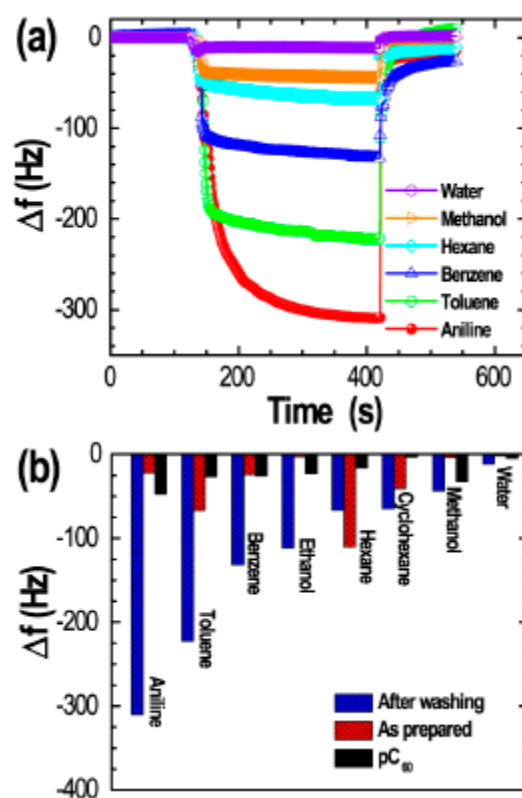
**Figure S2.** Additional SEM images of the crystal after washing showing different shapes.

### 3. TEM images of as-prepared fullerene crystals



**Figure S3.** TEM images of as prepared crystal before washing: **(a-d)** Low magnification TEM images. **(e)** HR-TEM image. Insets of panel “a” and “e” represent SAED pattern.

#### 4. Additional QCM sensing data



**Figure S4.** Additional QCM data: (a) Frequency shifts upon exposure and removal of solvents vapors; (b) Comparison of sensing performance of mesoporous bitter-melon-shape crystals (after washing) with as prepared crystal and pristine  $C_{60}$ .