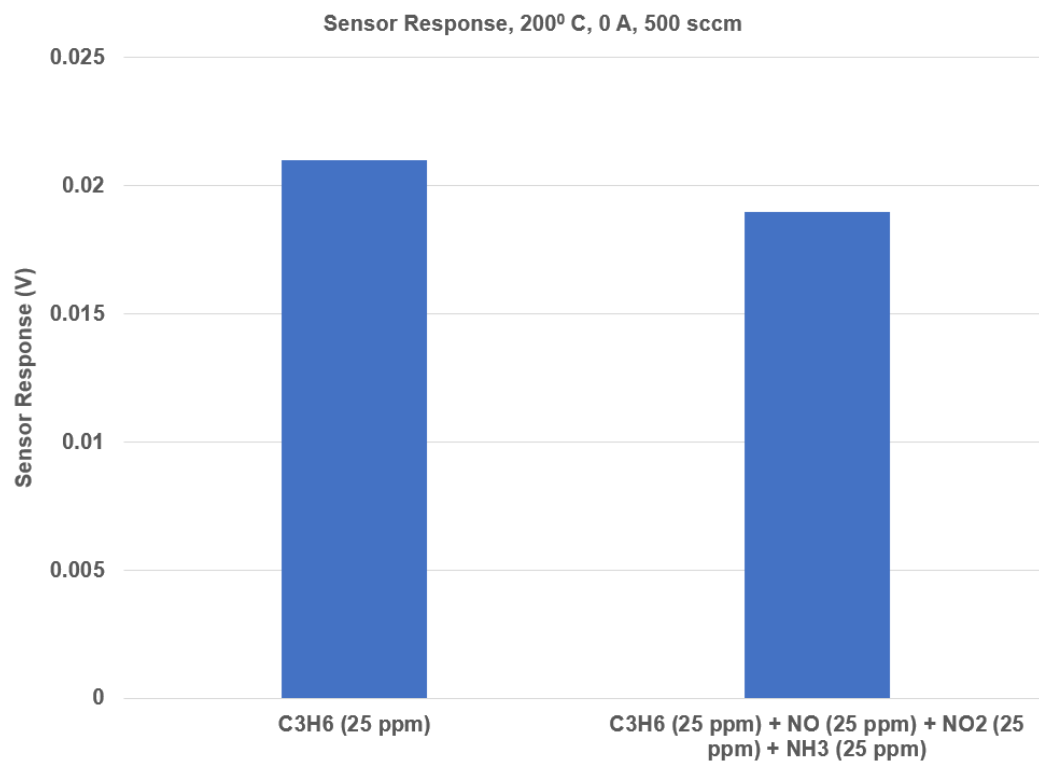
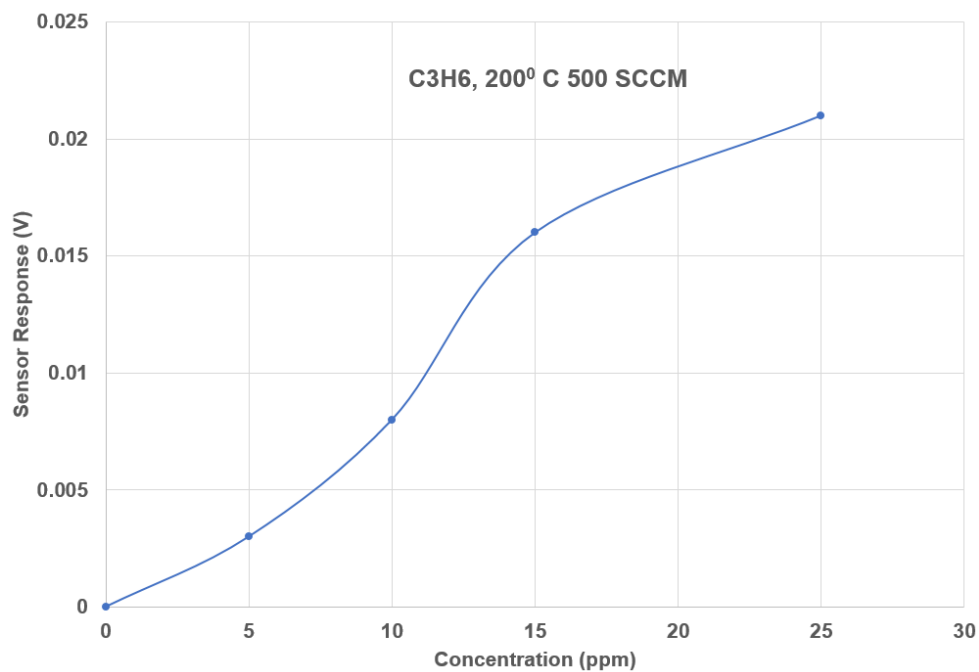


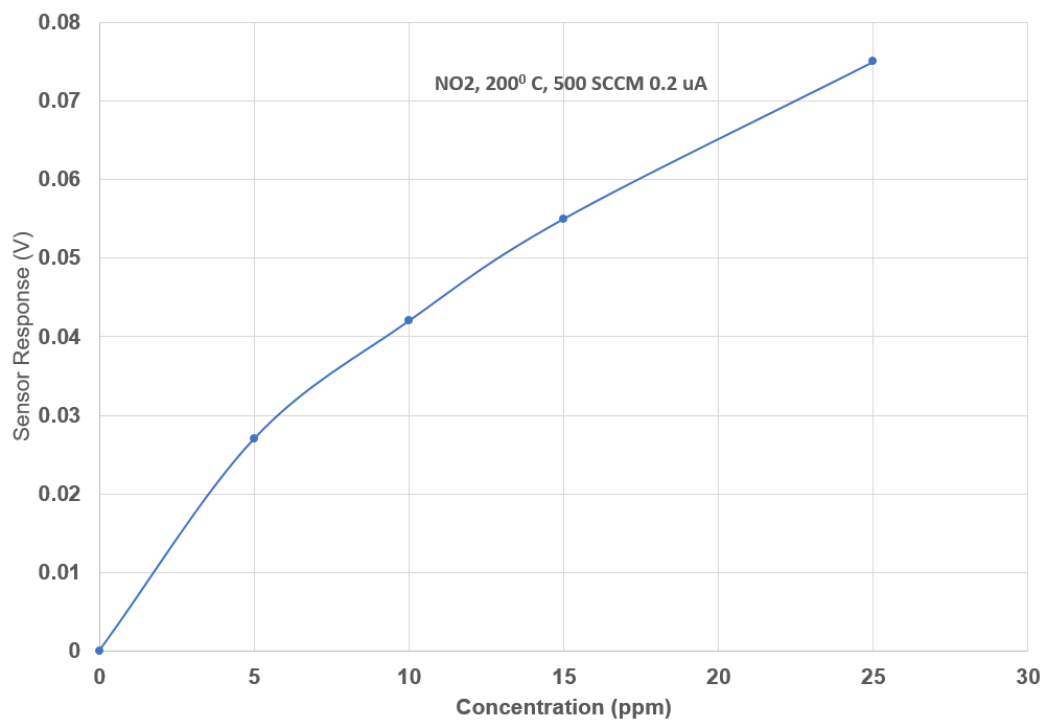
Supplemental Information



Sfigure 1. Open-circuit sensor response to 25 ppm of C₃H₆ and a mixture of 25 ppm of C₃H₆, NO, NO₂ and NH₃.



Sfigure 2. Open-circuit sensor response (sensitivity) to different concentrations of C_3H_6



Sfigure 3. Biased sensor response (sensitivity) to different concentrations of NO_2