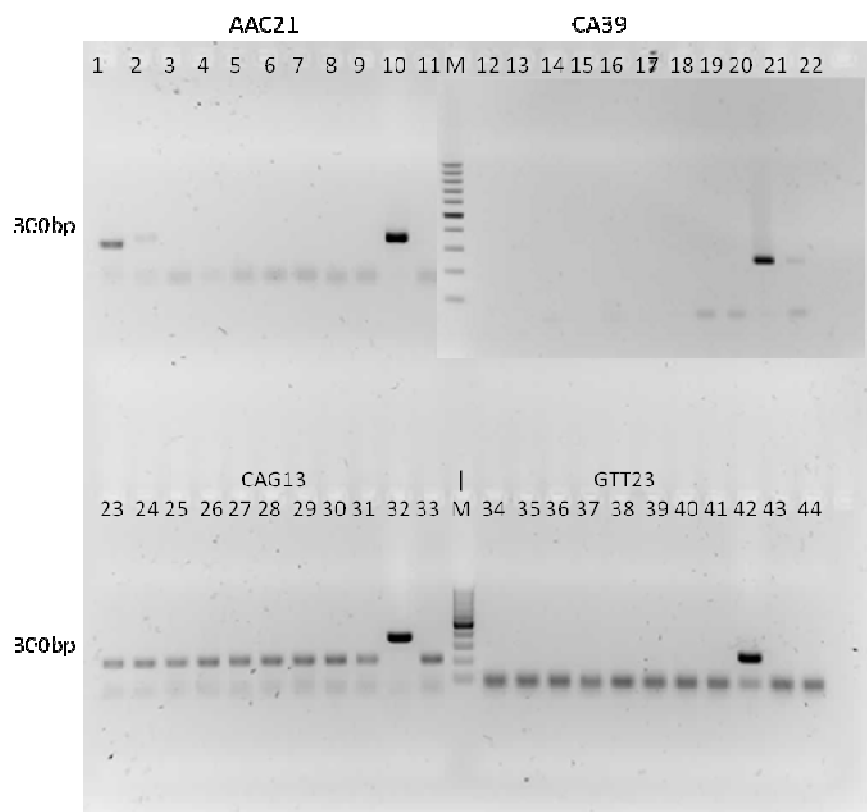


1	<i>T. lutea</i> (26)
2	<i>T. koningii</i> (28)
3	<i>T. reesei</i> (112)
4	<i>P. indica</i> (23)
5	<i>Tricholomata</i> (96)
6	<i>Mortierella</i> (25)
7	<i>Neonectria</i> (97)
8	<i>Eucasphaeria</i> (98)
9	<i>Penicillium</i> (76)
10	<i>T. virens</i> (1)
11	NK
12	<i>T. lutea</i> (26)
13	<i>T. koningii</i> (28)
14	<i>T. reesei</i> (112)
15	<i>P. indica</i> (23)
16	<i>Tricholomata</i> (96)
17	<i>Mortierella</i> (25)
18	<i>Neonectria</i> (97)
19	<i>Eucasphaeria</i> (98)
20	<i>Penicillium</i> (76)
21	<i>T. virens</i> (1)
22	NK

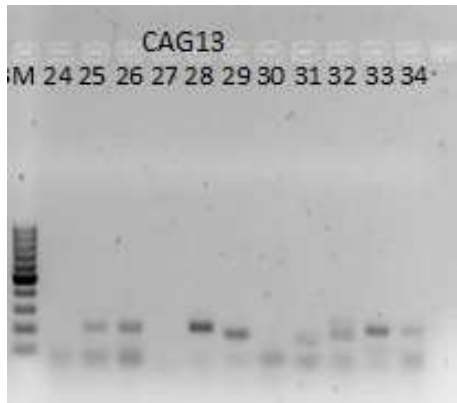
CA39 repeated and pasted to the former image



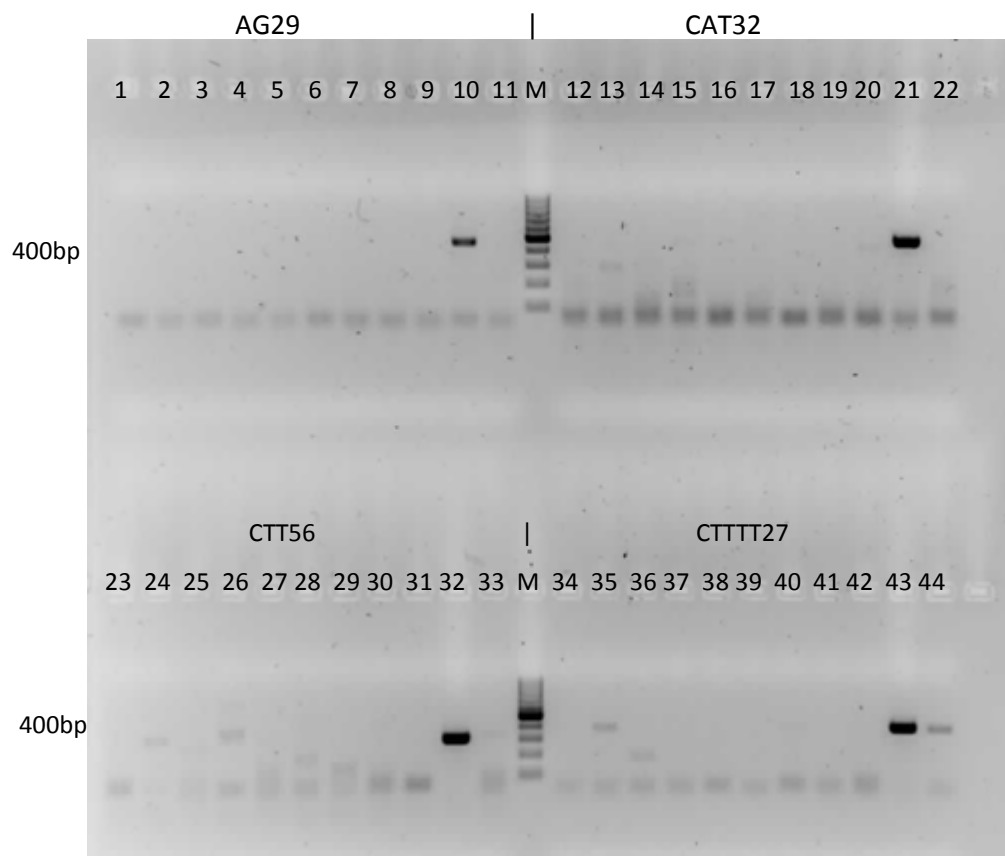
1	T. lutea (26)
2	T. koningii (28)
3	T. reesei (112)
4	P. indica (23)
5	Tricholomata (96)
6	Mortierella (25)
7	Neonectria (97)
8	Eucasphaeria (98)
9	Penicillium (76)
10	T. virens (1)
11	NK
12	T. lutea (26)
13	T. koningii (28)
14	T. reesei (112)
15	P. indica (23)
16	Tricholomata (96)
17	Mortierella (25)
18	Neonectria (97)
19	Eucasphaeria (98)
20	Penicillium (76)
21	T. virens (1)
22	NK
23	T. lutea (26)
24	T. koningii (28)
25	T. reesei (112)
26	P. indica (23)
27	Tricholomata (96)
28	Mortierella (25)
29	Neonectria (97)
30	Eucasphaeria (98)
31	Penicillium (76)
32	T. virens (1)
33	NK
34	T. lutea (26)
35	T. koningii (28)
36	T. reesei (112)
37	P. indica (23)
38	Tricholomata (96)
39	Mortierella (25)
40	Neonectria (97)
41	Eucasphaeria (98)
42	T. virens (1)
43	NK
44	Penicillium (76)

Upper CAG13 image confused with other primer!

CAG13 repeated

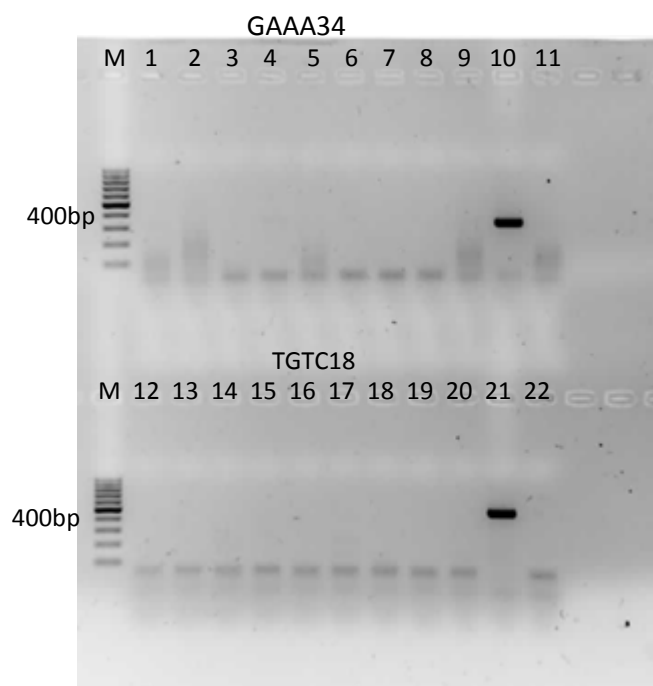


24	T. lutea (26)
25	T. koningii (28)
26	T. reesei (112)
27	P. indica (23)
28	Tricholomata (96)
29	Mortierella (25)
30	Neonectria (97)
31	Eucasphaeria (98)
32	Penicillium (76)
33	T. virens (1)
34	NK



1 T.lutea (26)

2	T. koningii (28)
3	T. reesei (112)
4	P. indica (23)
5	Tricholomata (96)
6	Mortierella (25)
7	Neonectria (97)
8	Eucasphaeria (98)
9	Penicillium (76)
10	T. virens (1)
11	NK
12	T. lutea (26)
13	T. koningii (28)
14	T. reesei (112)
15	P. indica (23)
16	Tricholomata (96)
17	Mortierella (25)
18	Neonectria (97)
19	Eucasphaeria (98)
20	Penicillium (76)
21	T. virens (1)
22	NK
23	T. lutea (26)
24	T. koningii (28)
25	T. reesei (112)
26	P. indica (23)
27	Tricholomata (96)
28	Mortierella (25)
29	Neonectria (97)
30	Eucasphaeria (98)
31	Penicillium (76)
32	T. virens (1)
33	NK
34	T. lutea (26)
35	T. koningii (28)
36	T. reesei (112)
37	P. indica (23)
38	Tricholomata (96)
39	Mortierella (25)
40	Neonectria (97)
41	Eucasphaeria (98)
42	Penicillium (76)
43	T. virens (1)
44	NK



1	<i>T. lutea</i> (26)
2	<i>T. koningii</i> (28)
3	<i>T. reesei</i> (112)
4	<i>P. indica</i> (23)
5	<i>Tricholomata</i> (96)
6	<i>Mortierella</i> (25)
7	<i>Neonectria</i> (97)
8	<i>Eucasphaeria</i> (98)
9	<i>Penicillium</i> (76)
10	<i>T. virens</i> (1)
11	NK
12	<i>T. lutea</i> (26)
13	<i>T. koningii</i> (28)
14	<i>T. reesei</i> (112)
15	<i>P. indica</i> (23)
16	<i>Tricholomata</i> (96)
17	<i>Mortierella</i> (25)
18	<i>Neonectria</i> (97)
19	<i>Eucasphaeria</i> (98)
20	<i>Penicillium</i> (76)
21	<i>T. virens</i> (1)
22	NK