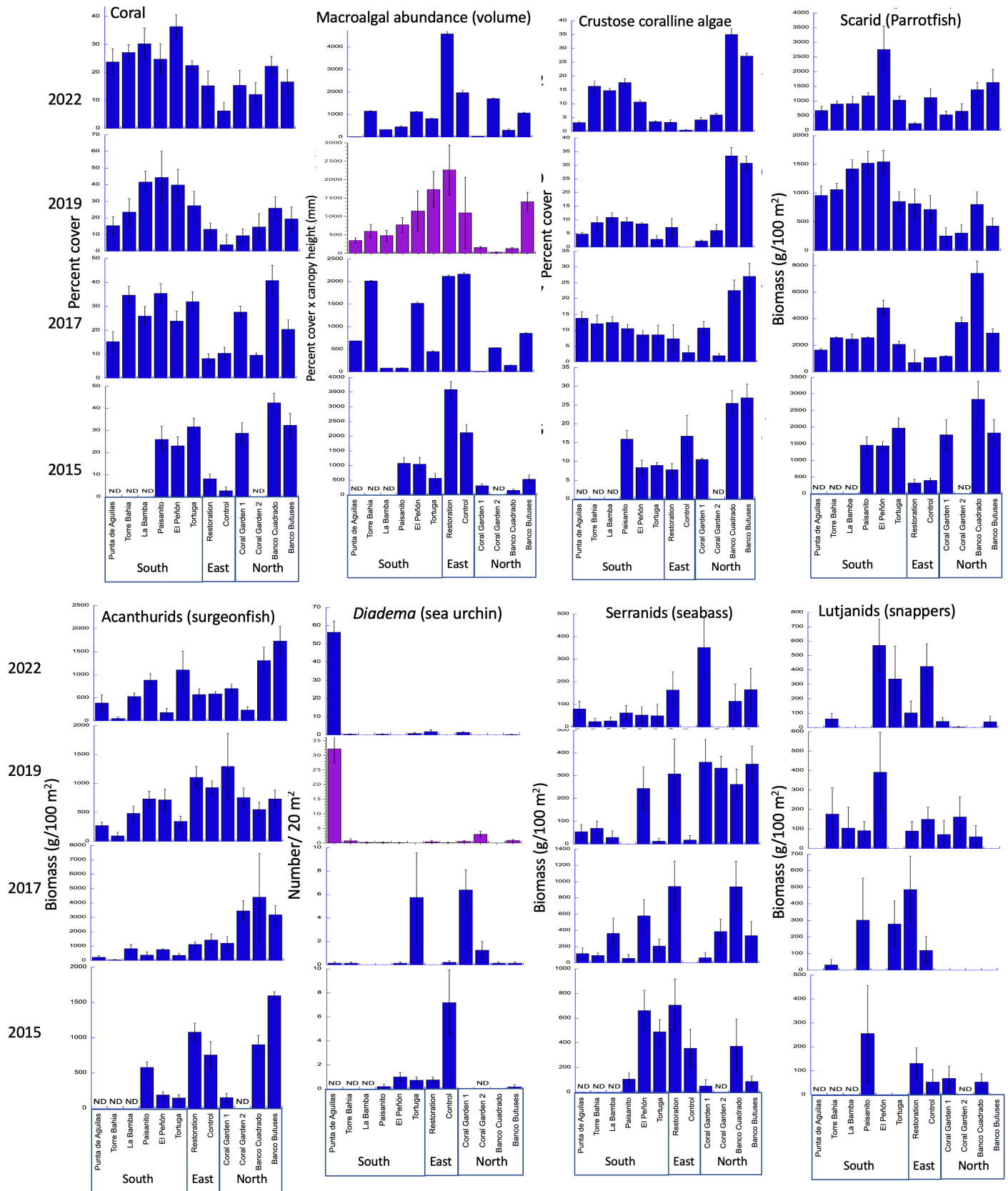


Fig. S1
Supplemental Fig. S1. Trends for each site over all years



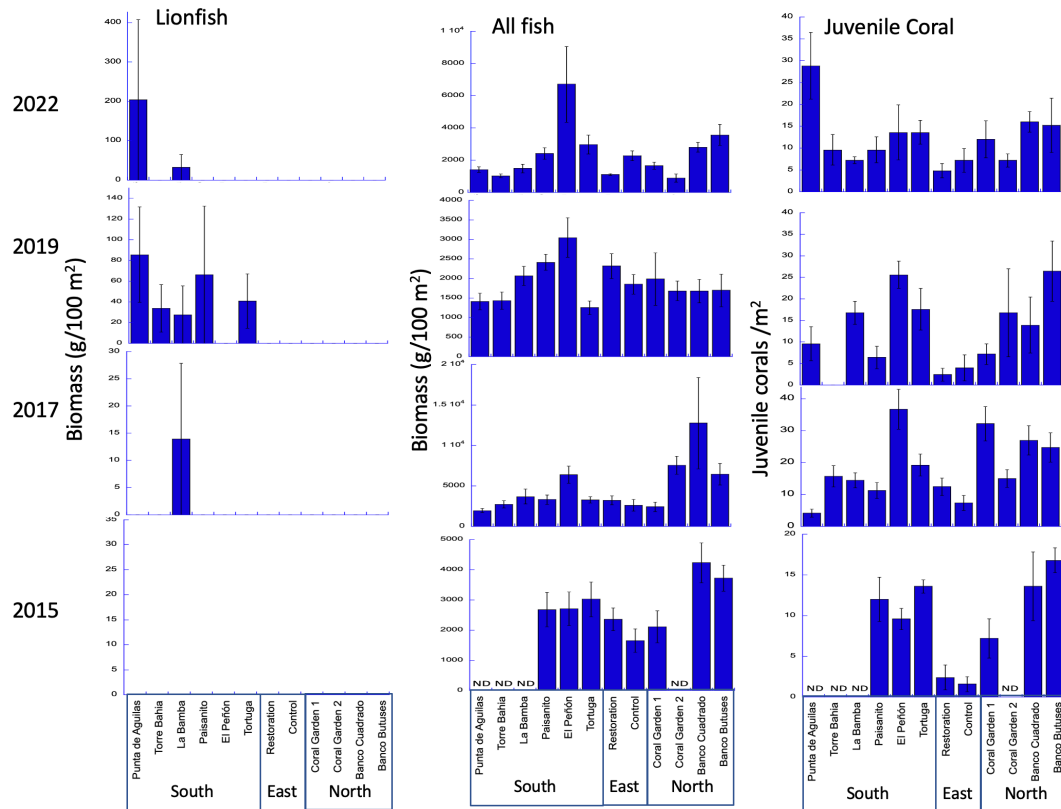


Fig. S2. Photographs from Montecristi region showing the effects of coral bleaching (2016) and hurricanes (September 2017)



2016



2018



A9

Banco Cuadrado - A. Cervicornis

2016



2018



Banco Saxonia - Porites 1

2015

A9



Banco Langosta - A. Palmata 3

2018



Banco Langosta - A. Palmata 3

Supplemental Table A1

Average fish biomass (g/100 m²) per family for all years 2015 – 2022.

Sectors	Regions/Sites	Acanthurids (surgeonfishes)	Carangids (Jacks)	Lionfish	Lutjanids (Snappers)	Parrotfishes	Scombrid (tuna)	Serranids (seabass - coney, graysby)	Sparids (porgys)	Labrid (wrasses)	Grand Total
South	Pedernales Punta Aguilas	390.5	59.3	203.7	0.0	681.4	0.0	80.6	0.0	0.0	1415.6
	Pedernales Torre Bahia	49.3	0.0	0.0	60.2	894.9	0.0	23.7	0.0	0.0	1028.2
	La Caleta Bomba	525.2	0.0	32.2	0.0	911.7	0.0	26.0	0.0	0.0	1495.0
	La Caleta Paisanito	883.3	50.2	0.0	0.0	1176.9	0.0	62.7	241.1	0.0	2414.2
	Bayahibe-Peñon	183.9	17.8	0.0	571.1	2758.4	3132.9	52.9	0.0	0.0	6717.1
	Bayahibe-Tortuga	1103.7	206.1	0.0	338.4	1032.5	0.0	50.6	0.0	245.8	2977.2
East	Punta Cana Restoration	572.4	0.0	0.0	102.0	229.5	0.0	164.3	0.0	49.1	1117.4
	Punta Cana Control	583.9	146.7	0.0	423.5	1121.5	0.0	0.0	0.0	0.0	2275.5
North	Galeras Coral Garden 1	701.5	34.6	0.0	41.9	536.6	0.0	351.6	0.0	0.0	1666.2
	Galeras Coral Garden 3	236.0	0.0	0.0	4.0	650.5	0.0	0.0	0.0	0.0	890.5
	Montecristi Banco Cuadrado	1306.7	0.0	0.0	0.0	1385.5	0.0	113.9	0.0	0.0	2806.2
	Montecristi Banco Butuse	1730.1	0.0	0.0	39.8	1630.0	0.0	164.9	0.0	0.0	3564.8