

Table S1. Characterization of 30 cattle microsatellite markers tested in Indian Mithuns and wild gaur.

Sl. No.	Markers	Chromosome location	Primer sequences (5' - 3')	Annealing Temperature(°C)	Dye
1	ETH225	9	GATCACCTTGCCACTATTTTCCT ACATGACAGCCAGCTGCTACT	58	FAM
2	ETH152	5	TACTCGTAGGGCAGGCTGCCTG GAGACCTCAGGGTTGGTGATCAG	50	FAM
3	HEL1	15	CAACAGCTATTTAACAAGGA AGGCTACAGTCCATGGGATT	52	FAM
4	ILSTS005	10	GGAAGCAATGAAATCTATAGCC TGTTCTGTGAGTTTGTAAGC	-	-
5	HEL5	21	GCAGGATCACTTGTTAGGGA AGACGTTAGTGACATTAAC	-	-
6	INRA005	12	CAATCTGCATGAAGTATAAATAT CTTCAGGCATACCCCTACACC	-	-
7	INRA035	16	ATCCTTTGCAGCCTCCACATTG TTGTGCTTTATGACACTATCCG	-	-
8	INRA063	18	ATTTGCACAAGCTAAATCTAACC AAACCACAGAAATGCTTGGAAG	-	-
9	MM8	2	CCCAAGGACAGAAAAGACT CTCAAGATAAGACCACACC	-	-
10	MM12	9	CAAGACAGGTGTTTCAATCT ATCGACTCTGGGGATGATGT	55	FAM
11	HEL9	8	CCCATTCACTCTTCAGAGGT CACATCCATGTTCTCACCAC	-	-
12	CSRM60	10	AAGATGTGATCCAAGAGAGAGGCA AGGACCAGATCGTGAAAGGCATAG	-	-
13	CSSM66	14	ACACAAATCCTTTCTGCCAGCTGA AATTTAATGCACTGAGGAGCTTGG	55	FAM
14	ETH185	17	TGCATGGACAGAGCAGCCTGGC GCACCCCAACGAAAGCTCCCAG	50	PET
15	HAUT24	22	CTCTCTGCCTTTGTCCCTGT AATACACTTTAGGAGAAAAATA	-	-
16	HAUT27	26	TTTTATGTTTCATTTTTTGACTGG AACTGCTGAAATCTCCATCTTA	50	VIC
17	ETH3	19	GAACCTGCCTCTCCTGCATTGG ACTCTGCCTGTGGCCAAGTAGG	50	VIC
18	ETH 10	5	GTTCAGGACTGGCCTGCTAACA CCTCCAGCCCACTTTCTCTTCTC	50	VIC
19	INRA032	11	AAACTGTATTCTCTAATAGCAC GCAAGACATATCTCCATTCTTT	-	-
20	INRA023	3	GAGTAGAGCTACAAGATAAACTTC TAACTACAGGGTGTTAGATGAACTCA	-	-
21	BM2113	2	GCTGCCTTCTACCAAATACCC	50	VIC

			CTTAGACAACAGGGGTTTGG		
22	BM1818	23	AGCTGGGAATATAACCAAAGG	55	FAM
			AGTGCTTTCAAGGTCCATGC		
23	BM1824		GAGCAAGGTGTTTTCCAATC	55	NED
			CATTCTCCAAGTCTTCCTTG		
24	HEL 13	11	TAAG GACTTGAGATAAG GAG	50	NED
			CCATCTACCTCCATCTTAAC		
25	ILSTS006	7	TGTCTGTATTTCTGCTGTGG	55	FAM
			ACACGGAAGCGATCTAAACG		
26	ILSTS030	2	CTGCAGTTCTGCATATGTGG	50	NED
			CTTAGACAACAGGGGTTTGG		
27	ILSTS034	5	AAGGGTCTAAGTCCACTGGC	55	PET
			GACCTGGTTTAGCAGAGAGC		
28	ILSTS033	12	TATTAGAGTGGCTCAGTGCC	50	PET
			ATGCAGACAGTTTATAGAGGG		
29	ILSTS011	14	GCTTGCTACATGGAAAGTGC	50	NED
			CTAAAATGCAGAGCCCTACC		
30	ILSTS054	21	GAG GA TCTTGATTTTGATGTCC	58	PET
			AGGGCCACTATGGTACTTCC		

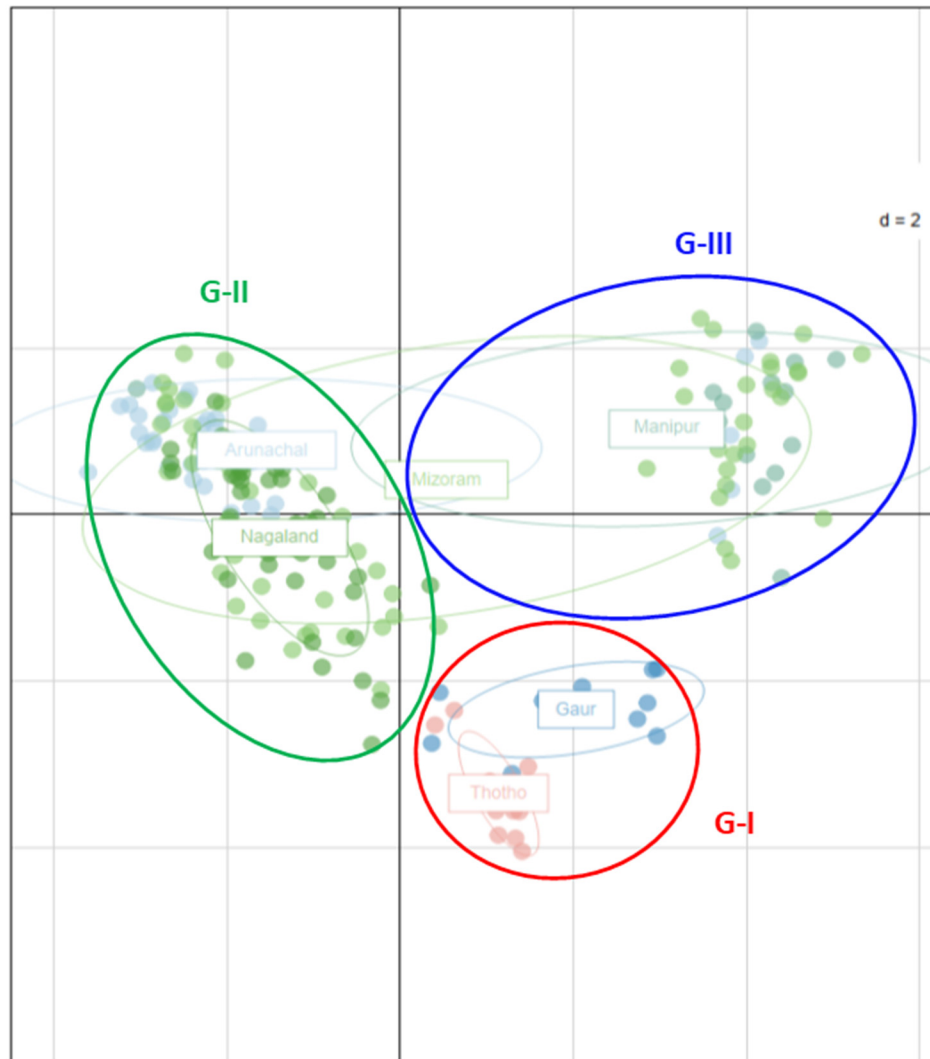


Figure S1. PCA analysis clustering the structured sub-populations separately.

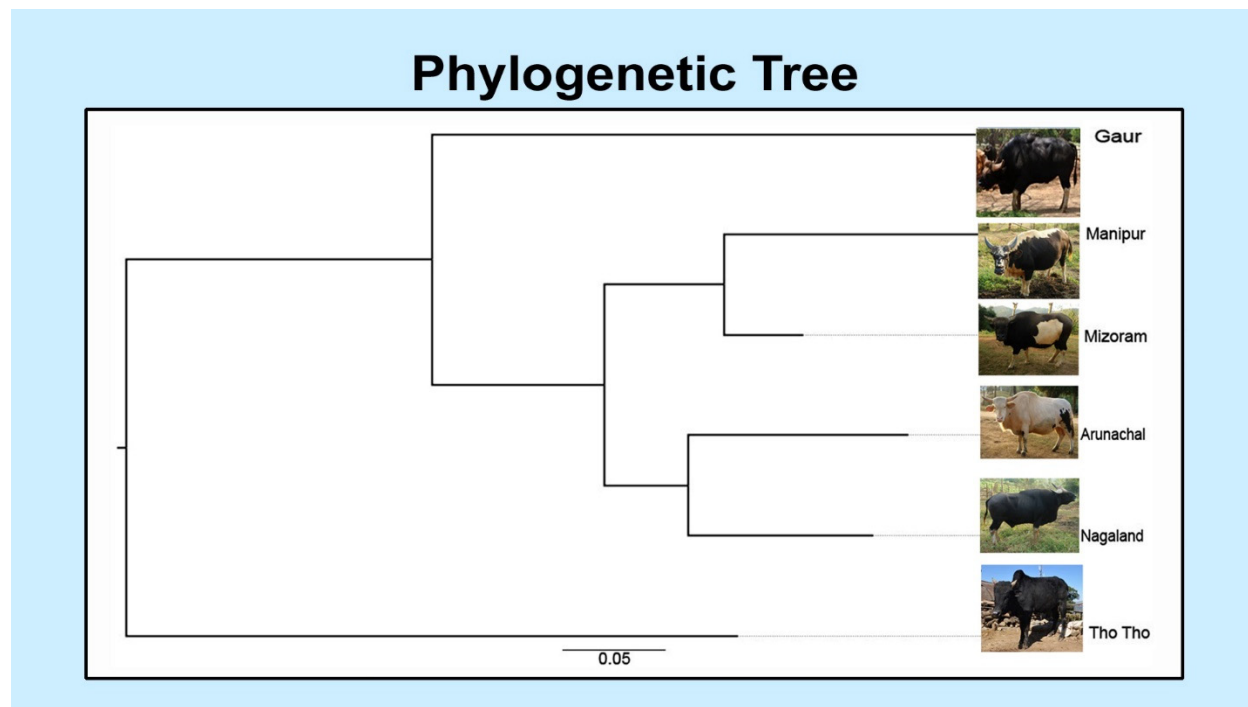


Figure S2. Neighbour-joining (NJ) tree showing phylogenetic relation based on the Nei's distances among mithun, wild gaur and Tho-tho cattle from North Eastern Hill Region of India.