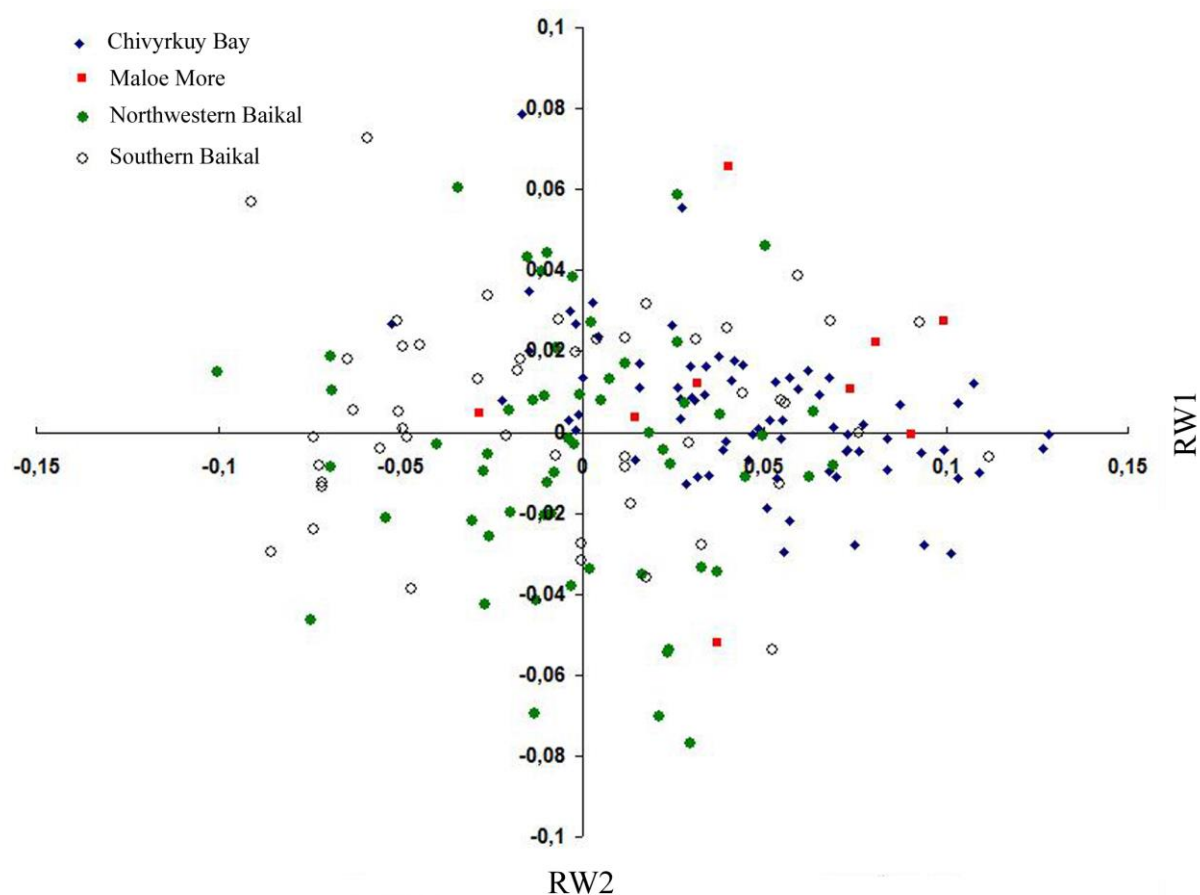
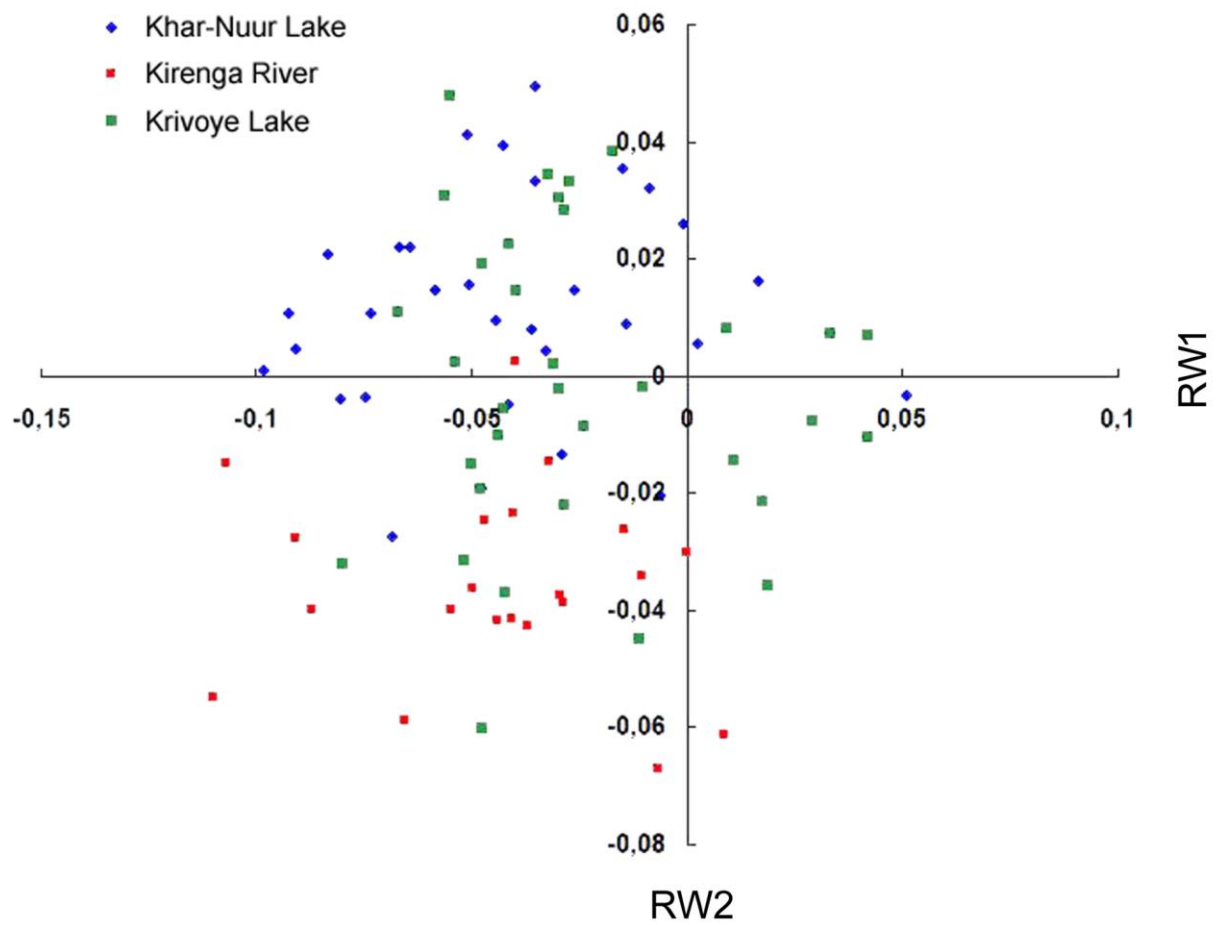


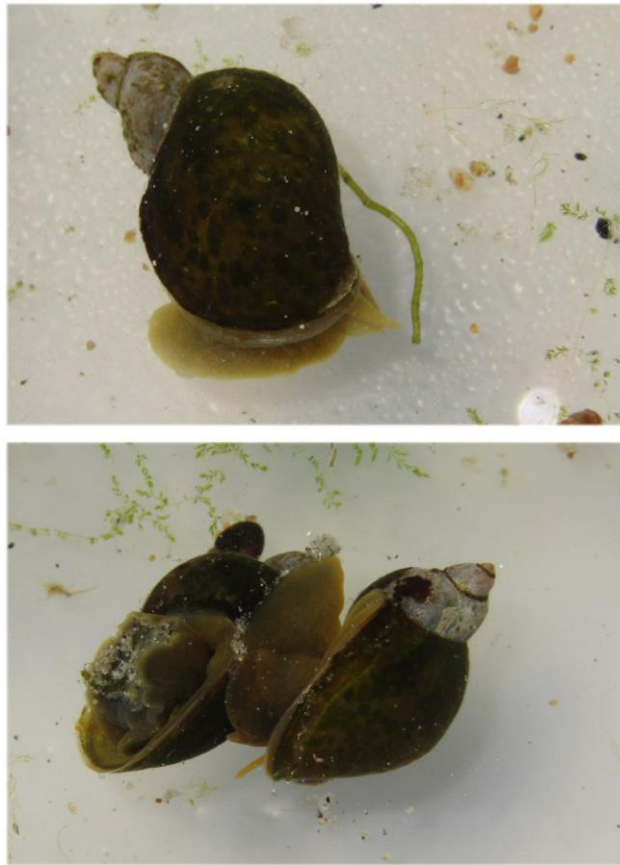
## Supplementary Figures



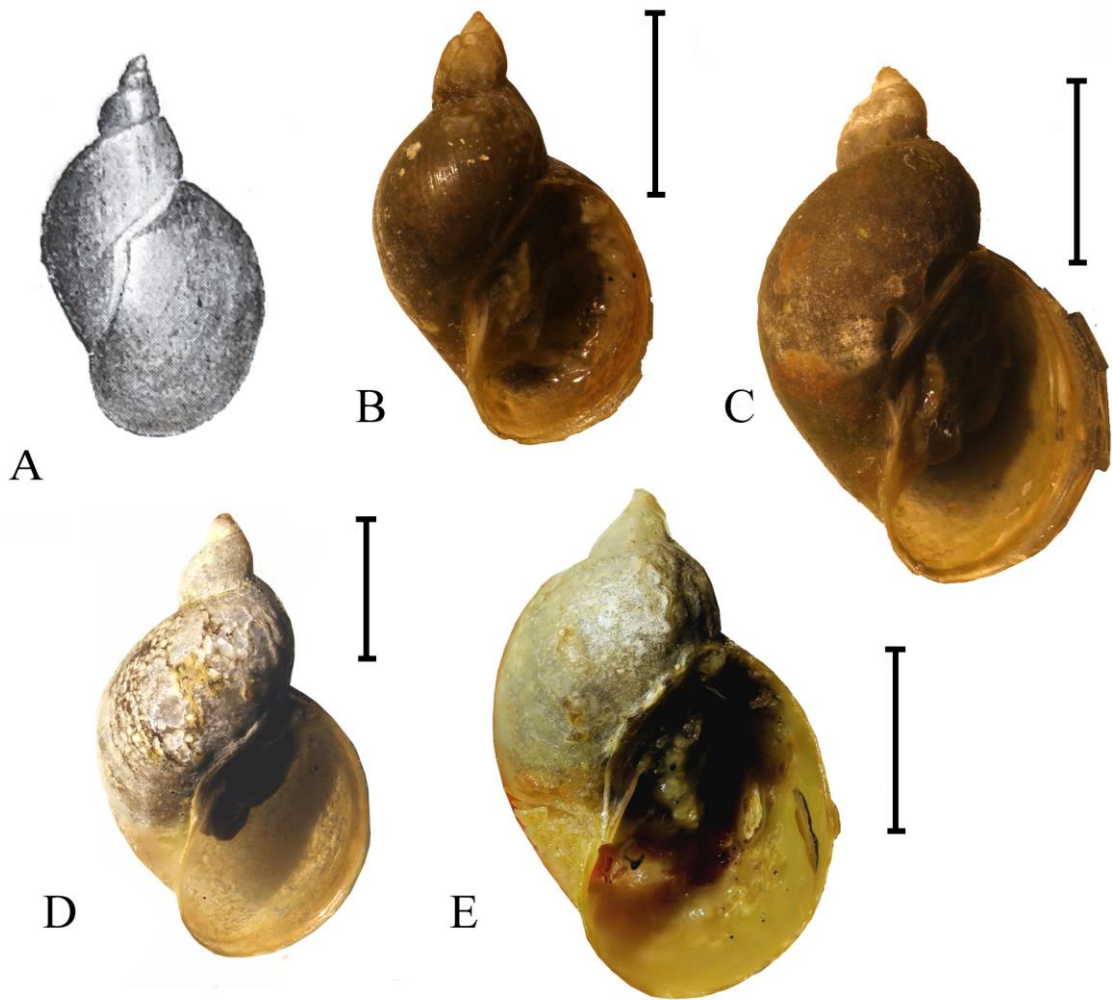
**Supplementary Figure S1** The lack of phenotypical differentiation among populations of *R. auricularia* from the four main regions of Baikal (see Table 1), as revealed by a geometric morphometric analysis.



**Supplementary Figure S2. The lack of phenotypical differentiation among populations of *R. auricularia* from the Siberian and Mongolian populations used in the geometric morphometric analysis (see Table 1).**



**Supplementary Figure S3. Living specimens of *Radix auricularia* from a sample dredged in the Peschanaya Bay of Lake Baikal, 6–7 m depth, 21/07/2021. 52.2594 N 105.7049 E. Photo: Maxim V. Vinarski.**



**Supplementary Figure S4. A. Shell of *Limnaea limosa* var. *roszkowskiana* (= *R. auricularia*) from the Geneva Lake of Switzerland (after Piaget, 1913). B-E. Shell variability in *R. auricularia* from the Peschanaya Bay. Scale bars – 5 mm (in A – scale bar is absent in the original source).**