

Supplemental Information for: Genetic Diversity and Population Structure of Two Endangered Neotropical Parrots Inform *In Situ* and *Ex Situ* Conservation Strategies, Campos et al, 2021 - Diversity

Table S1: Wild sampling information for the blue-throated macaw and thick-billed parrot. All ID's are as recorded in metadata provided by field crews. Samples in parentheses were randomly removed as assumed first-order relatives of another bird sampled from the same nest.

Species	Sampling Locality (n)	Sample ID's (Removed)
<i>A. glaucogularis</i>	Bethel (11)	25, (26), 28, (29), (30), 49, (50), (51), (52)
	Cantina (3)	69, (70), (71)
	Esperancita (25)	1, (3), (4), (5), (6), (9), (11), (13), (15), 19, (20), (21), (37), (38), (39), 47, 48, 60, (61), (62), 63, 72, (73), 74, (75), 76, 77
	Holanda (8)	(22), (34), (35), 36, 43, (44), 46, (55)
	La Verde (6)	16, (17), (18), (23), (24), 40
	Palma Sola (5)	31, (32), (33), 41, (42)
	Urkupiña (2)	27, (45)
	Total = 60 Birds	
<i>R. pachyrhyncha</i>	Madera (37)	(001), 002, 003, (004), (200201), 200202, 230201, (230202), (230203), 291201, (291501), 291502, (291503), 2302-40, (2604-41), 2604-42, (2915-48), (2915-49), 2915-50, M0129-1, (M0129-2), M0229-1, (M0429-1) M0429-2, M1-2, (M12-1), (M12-2), M12-3, M1628-1, (M1628-2), (M2604-1), M2604-2, (M2604-3), (PN02-44), PN02-45, X5-46, (X5-47)
	San Juanito (1)	SJ5801-2
	Tutuaca (8)	3711-2, T0739-2, (T0839-1), T0839-2, T0939-1, (T0939-2), (T1339-1), T1339-2
	Total = 46 birds	

Supplemental Information for: Genetic Diversity and Population Structure of Two Endangered Neotropical Parrots Inform *In Situ* and *Ex Situ* Conservation Strategies, Campos et al, 2021 - Diversity

Table S2: Captive sampling information for the blue-throated macaw and thick-billed parrot. Sample ID's are studbook numbers. ID's marked with asterisk are local ID's for samples where no Studbook ID is available.

Species	Country	Organization	Sample ID's
<i>A. glaucogularis</i>	United States	Dallas World Aquarium	966, 973, 1099, 1103, 1146
	United States	Moody Gardens	996, 997, 1013
	United States	Natural Encounters Zoo	17, 38, 63, 72, 82, 109, 199, 216, 218, 219, 296, 297, 457, 805, 821, 877, 933, 940, 956, 958, 959, 961, 1079, 1085
	United States	Pinola Conservancy	1068, No_Band*, WPP_TX_1606_1.0*, 818, 983
	United States	St. Augustine Alligator Farm	53*, 54*, 56*, 57*, 58*, 59*
	Bolivia	Blue-throated Macaw Conservation Center	64*, 65*, 66*, 67*, 68*
	Bolivia	Santa Cruz Zoo	806, 761, 765, 772, 779, 786, 794, 809, 812, 871, 1017, 1030
	Canada	African Lion Safari	
	Total = 60 Birds		
	United States	Akron Zoo	37, 148, 149, 151, 221, 287, 343, 386, 504, 527, 528, 544, 545
<i>R. pachyrhyncha</i>	United States	Albuquerque Zoo	450, 502
	United States	Ft. Worth Zoo	106, 274
	United States	Living Desert	75, 435, 503, 646
	United States	Phoenix Zoo	227, 556, 571, 572, 587
	United States	Riverbanks Zoo	322, 659, 6614*
	United States	Sacramento Zoo	58, 82, 90, 111, 216, 228, 397, 468, 575, 581, 592, 594, 595, 603, 604, 606, 651, 652, 201650*, 201651*
	United States	San Diego Zoo	589
	United States	San Diego Wild Animal Park	200, 421, 513, 808105*, 808146*
	United States	Sedgewick Zoo	574, 582, 601, 634, 640, 641, 11029*, 12137*, 12138*
	United States	Tulsa Zoo	240, 241, 15463*, 15464*
Total = 68 Birds			68

Table S3: Previously unpublished primer sequences developed for the thick-billed parrot

Primer	Sequence (5'-3')	Repeat Motif	T _a (°C)
Rhpac074 ^[30]	For: TGAACCTTCTGTGTCAAGAGGA Rev: CTTTTCTGGGTGCTGATGT	(CA) ₁₀	53
Rhpac149 ^[30]	For: TCTTCTCCATGCACATCAGTG Rev: GCTTCCTGGTATGACCCTTG	(GT) ₉ GA(GT) ₁₀	56
TBP2-39 ^[29]	For: TCATTGCTATATTCGGGTTTCCT Rev: TGCTCTGTCCTGTCTTGATAA	(GA) ₁₀	55
TBP2-61 ^[29]	For: CAAACAAGCATCCAGAAGACAA Rev: TATTGCAACATCTTGCCTGACT	(GT) ₁₄	58

Table S4: Primer success rate in PCR for blue-throated macaw and thick-billed parrot

Species	Primer	Number of Individuals	Number Successfully Amplified	Success Rate (%)
<i>A. glaucogularis</i>	SCMA09	116	110	95
	SCMA46	116	101	87
	SCMA19	116	95	82
	SCMA31	116	95	82
	SCMA14	116	111	96
	SCMA27	116	112	97
	SCMA12	116	85	73
	SCMA11	116	110	95
	SCMA22	116	112	97
	SCMA26	116	113	97
	SCMA34	116	81	70
	SCMA02	116	107	92
<i>R. pachyrhyncha</i>	UnaCT74	113	108	96
	UnaCT21	113	111	98
	UnaCT55	113	112	99
	UnaCT43	113	105	93
	TBP2-39	113	108	96
	TBP2-61	113	111	98
	Rhpac149	113	110	97
	Rhpac074	113	106	94
	MmGT057	113	109	96
	MmGT090	113	109	96
	CyanP05	113	107	95

Supplemental Information for: Genetic Diversity and Population Structure of Two Endangered Neotropical Parrots Inform *In Situ* and *Ex Situ* Conservation Strategies, Campos et al, 2021 - Diversity

Table S5: Relatedness matrix of blue-throated macaw individuals remaining after dataset reduction using captive pedigree and wild sampling data. Sample ID's in red are individuals randomly removed from dataset due as result of relatedness. Green cells= Confirmed unrelated; Yellow=Related but not 1st order; Red=Cannot confirm.

a. Captive Population																															
Sample ID	821	457	296	109	38	805	17	38	961	1079	973	WPP_TX_1606_1.0	1068	No_Band	1013	996	983	806	772	812	786	765	871	779	809	SC_Muestra53	BolCapt_Muestra64	Muestra65	Muestra66	Muestra67	Muestra68
821	1																														
457	0	1																													
296	0.09	0	1																												
109	0	0	0	1																											
38	0	0	0	0	1																										
805	0.07	0	0	0.13	0	1																									
17	0	0	0	0.25	0	0	1																								
38	0.16	0.14	0	0.12	0	0.31	0	1																							
961	0.05	0.07	0	0.12	0.09	0	0	0.09	1																						
1079	0.13	0	0	0.01	0	0.12	0	0	0	1																					
973	0.5	0	0	0	0.07	0.32	0	0.37	0.05	0.01	1																				
WPP_TX_1606_1.0	0.12	0	0	0.12	0	0	0.2	0	0.32	0.07	0	1																			
1068	0.41	0.5	0	0	0.15	0	0	0	0	0.07	0	0	1																		
No_Band	0.26	0.26	0	0.35	0	0	0	0.14	0	0.02	0	0	0.66	1																	
1013	0	0	0.11	0.07	0	0	0.05	0	0.28	0.12	0.19	0	0	0	1																
996	0.03	0	0	0	0	0	0	0	0	0.09	0	0	0	0.34	0	1															
983	0	0	0	0	0	0.14	0.01	0.16	0.11	0	0	0.03	0.16	0.04	0.5	0.13	1														
806	0	0.28	0	0	0.18	0.13	0	0.26	0.16	0.17	0	0	0	0	0	0	0	1													
772	0	0	0	0.14	0	0.13	0.12	0.11	0	0.04	0	0	0.01	0	0.2	0.05	0	0	1												
812	0.01	0	0.05	0	0	0	0	0	0.02	0.23	0	0.18	0	0	0	0.12	0.04	0	0	1											
786	0.02	0	0	0.11	0.25	0	0	0	0.04	0	0.06	0	0	0	0	0	0.2	0	0.3	1											
765	0	0	0.01	0	0.04	0.32	0	0.31	0	0	0.29	0	0	0.13	0	0.06	0	0.11	0	0.09	0.14	1									
871	0	0	0	0	0	0.01	0	0.02	0	0.01	0.14	0	0	0	0	0.12	0	0	0	0	0	0.5	1								
779	0	0	0.08	0.11	0	0.12	0	0	0.04	0	0	0	0	0	0.08	0	0	0	0	0	0.03	0	0.06	1							
809	0	0	0	0	0.18	0	0	0	0.02	0	0	0.02	0	0	0	0	0	0	0.13	0.27	0	0.16	0.11	1							
SC_Muestra53	0	0.17	0	0	0.28	0	0	0	0.01	0	0.26	0	0	0	0.04	0	0	0.35	0	0.03	0.41	0.23	0.27	0	0	1					
BolCapt_Muestra64	0.03	0	0.07	0.06	0.02	0.26	0.17	0	0	0	0	0.01	0	0.06	0	0	0.03	0	0.15	0	0	0	0.04	0.09	0	1					
Muestra65	0	0.08	0	0	0	0	0	0	0	0	0.04	0	0.19	0	0	0.07	0	0	0.28	0.35	0.09	0.14	0.05	0.11	0.39	0	1				
Muestra66	0	0.19	0	0	0.27	0	0.14	0	0	0	0	0	0	0	0	0.03	0	0.5	0	0	0.12	0	0	0	0.21	0.3	0.07	0.26	1		
Muestra67	0	0.34	0	0	0	0.11	0	0	0	0	0	0	0	0	0	0.08	0.06	0	0.18	0.16	0	0	0	0	0.13	0	0.04	0	0.05	1	
Muestra68	0	0.14	0	0.3	0.08	0	0	0	0	0	0	0	0.28	0.07	0	0	0	0	0.06	0.08	0.09	0	0	0.06	0.19	0	0	0.5	0	0.23	1
b. North Wild Population																															
Sample ID	Nwild_Muestra16	Muestra28	Muestra41	Muestra49	Muestra25	Muestra31	Muestra36	Muestra40	Muestra43	Muestra46	Muestra27																				
Nwild_Muestra16	1																														
Muestra28	0	1																													
Muestra41	0.08	0	1																												
Muestra49	0.18	0	0	1																											
Muestra25	0	0.23	0	0	1																										
Muestra31	0	0	0	0	0	1																									
Muestra36	0	0	0.23	0	0	0	1																								
Muestra40	0.48	0	0	0.06	0	0	0	1																							
Muestra43	0	0	0	0	0	0	0.41	0	1																						
Muestra46	0	0	0.01	0	0.05	0	0.29	0	0.13	1																					
Muestra27	0	0	0	0	0.5	0	0	0.1	0	0	1																				
c. South Wild Population																															
Sample ID	Swild_Muestra1	Muestra60	Muestra69	Muestra72	Muestra74	Muestra76	Muestra77	Muestra19	Muestra47	Muestra48	Muestra63																				
Swild_Muestra1	1																														
Muestra60	0	1																													
Muestra69	0.27	0	1																												
Muestra72	0	0	0	1																											
Muestra74	0	0.31	0	0	1																										
Muestra76	0	0	0.02	0	0	1																									
Muestra77	0.24	0	0.15	0.01	0.04	0	1																								
Muestra19	0	0.26	0	0	0	0.04	0	1																							
Muestra47	0.2	0.41	0	0	0	0.15	0	0	1																						
Muestra48	0.66	0.1	0.16	0.23	0	0.14	0	0	0.11	1																					
Muestra63	0	0	0.09	0	0.02	0.42	0	0	0	0	1																				

Supplemental Information for: Genetic Diversity and Population Structure of Two Endangered Neotropical Parrots Inform *In Situ* and *Ex Situ* Conservation Strategies, Campos et al, 2021 - Diversity

Table S6: Relatedness matrix of thick-billed parrot individuals remaining after dataset reduction using captive pedigree and wild sampling data. Sample ID's in red are individuals randomly removed from dataset as result of relatedness. Green cells= Confirmed unrelated; Yellow=Related but not 1st order; Red=Cannot confirm.

a. Captive Population																																					
Sample ID	37	75	82	106	111	148	149	151	200	216	227	228	240	241	274	386	421	435	450	468	502	503	513	527	544	556	571	572	575	587	589	592	640	641	646	659	
37	1																																				
75	0	1																																			
82	0	0.39	1																																		
106	0	0	0	1																																	
111	0.5	0	0.09	0	1																																
148	0	0.1	0	0.03	0.01	1																															
149	0	0	0	0.33	0	0.03	1																														
151	0	0	0	0.32	0.27	0	0.34	1																													
200	0	0	0	0	0	0	0	0	1																												
216	0	0	0	0	0.42	0	0.05	0	0	1																											
227	0	0	0	0.04	0.05	0.38	0.04	0	0	0.28	1																										
228	0.02	0	0.11	0.14	0.06	0.03	0.37	0	0	0.06	0	1																									
240	0.1	0	0.14	0.34	0.09	0.01	0.23	0.23	0	0	0.11	0	1																								
241	0	0	0.2	0	0.43	0	0.18	0.28	0	0.1	0.39	0	0.22	1																							
274	0	0.01	0	0.11	0	0	0	0.15	0.21	0	0	0	0	0.05	1																						
386	0	0.11	0.04	0	0	0	0	0	0.11	0	0	0.13	0	0	0.5	1																					
421	0.2	0	0	0	0	0	0	0	0	0	0.08	0	0	0.5	0	0	1																				
435	0.33	0	0.1	0.08	0.5	0.06	0.07	0.12	0	0.03	0.08	0.11	0	0.03	0	0	0.15	1																			
450	0.18	0.52	0.14	0	0	0	0	0	0	0.17	0	0.15	0.26	0	0.18	0.11	0	0	1																		
468	0	0.07	0.12	0.1	0.5	0.22	0	0	0.12	0.27	0	0	0	0	0.17	0.15	0	0	0	1																	
502	0	0.19	0	0.06	0	0.18	0	0.5	0	0	0	0	0	0	0.01	0.16	0	0.14	0.06	0	1																
503	0.17	0.47	0.18	0	0.12	0	0	0	0.21	0	0	0.24	0	0	0	0	0	0.02	0.07	0	0.11	1															
513	0	0	0.13	0	0	0	0.37	0.34	0.02	0	0	0	0	0.11	0	0	0	0.05	0	0.11	0	0	1														
527	0.14	0.21	0	0.1	0	0	0.25	0.18	0.23	0	0	0	0	0.14	0.1	0	0	0	0.21	0	0	0.2	0.25	1													
544	0	0.04	0	0	0	0.53	0	0	0.15	0	0.18	0	0	0	0	0	0	0	0	0	0.15	0	0.06	0	1												
556	0	0.1	0	0	0.05	0	0.17	0.5	0.04	0	0	0	0.23	0.12	0	0	0	0	0.07	0	0.08	0	0.04	0.23	0	1											
571	0	0	0.07	0.12	0.45	0	0	0	0	0.15	0.11	0	0.2	0.5	0	0	0	0.03	0	0.13	0	0	0	0.2	0	0	0	1									
572	0.02	0.18	0.14	0	0	0	0	0	0	0	0	0	0	0	0	0.1	0.23	0.08	0	0.5	0	0	0.37	0	0	0	0.17	1									
575	0	0	0	0.04	0	0.11	0.28	0.08	0	0	0	0.33	0.05	0	0.07	0	0	0	0.19	0	0.05	0	0.07	0.07	0	0.18	0	0	1								
587	0.04	0	0.14	0	0	0	0	0	0.15	0	0.2	0	0.03	0.43	0	0.5	0	0	0.03	0.18	0	0.04	0	0.18	0	0	0.71	0.13	0	1							
589	0	0.14	0.11	0	0	0	0.25	0	0.02	0	0	0.27	0	0	0.26	0.05	0.12	0	0	0	0.08	0.29	0	0.25	0.06	0	0	0	0.56	0	1						
592	0.5	0	0.09	0.1	0.11	0	0	0	0	0.16	0	0	0	0	0.22	0	0	0.26	0	0.5	0	0	0.11	0	0	0	0	0.06	0.04	0.15	0	1					
640	0	0	0.5	0	0	0	0.06	0	0	0.18	0	0.06	0	0	0	0	0	0	0.2	0	0	0.11	0.06	0	0.06	0.01	0	0.12	0.26	0	0.23	0.06	1				
641	0.19	0	0	0.09	0.31	0	0.5	0.43	0.11	0.18	0	0	0.24	0.48	0	0.3	0	0	0.36	0.19	0	0	0	0.11	0.02	0.22	0.18	0	0.28	0.2	0.04	0	0.25	1			
646	0	0.31	0	0	0	0.26	0	0	0.46	0	0	0	0	0	0.24	0.14	0	0	0	0.57	0.04	0	0.14	0	0.14	0.05	0	0.45	0	0.1	0	0.15	0	0.11	1		
659	0	0	0.13	0	0.1	0	0.04	0	0	0.56	0.21	0.47	0	0	0	0	0	0	0.1	0	0	0.01	0	0.01	0	0.01	0.27	0.03	0.28	0	0.13	0.14	0.18	0	0.45	0.13	0

Supplemental Information for: Genetic Diversity and Population Structure of Two Endangered Neotropical Parrots Inform *In Situ* and *Ex Situ* Conservation Strategies, Campos et al, 2021 - Diversity

b. Madera Population																		
SampleID	292201_Mad	1376_Mad	003_Mad	230201_Mad	200202_Mad	291502_Mad	M0129-1Mad	X5-46_Mad	2302-40_Mad	PN02-45_Mad	2915-50_Mad	2604-42_Mad	M12-3_Mad	M2604-2_Mad	M0229-1_Mad	M1-2_Mad	M0429-2_Mad	M1628-1_Mad
292201_Mad	1																	
1376_Mad	0	1																
003_Mad	0.05	0	1															
230201_Mad	0	0	0	1														
200202_Mad	0	0	0.5	0	1													
291502_Mad	0	0	0	0.02	0.27	1												
M0129-1Mad	0.35	0	0	0.04	0	0	1											
X5-46_Mad	0.1	0	0	0	0.31	0	0	1										
2302-40_Mad	0.28	0	0.26	0.38	0.5	0	0	0	1									
PN02-45_Mad	0	0.45	0	0.5	0	0	0	0	0.16	1								
2915-50_Mad	0	0	0	0.19	0.27	0.71	0	0	0	0	1							
2604-42_Mad	0.01	0	0	0	0	0	0.19	0.1	0	0	0	1						
M12-3_Mad	0.27	0	0	0	0	0	0	0.5	0.11	0	0	0	1					
M2604-2_Mad	0.11	0	0	0	0	0	0.19	0.28	0	0.05	0	0.8	0.06	1				
M0229-1_Mad	0	0.05	0	0.35	0.27	0.56	0	0	0	0	0.8	0	0	0	1			
M1-2_Mad	0	0.5	0.1	0	0	0	0.5	0	0	0.5	0	0	0	0	0	1		
M0429-2_Mad	0.5	0	0.01	0	0.5	0.02	0	0	0	0	0.02	0.11	0.27	0	0	0	1	
M1628-1_Mad	0.26	0	0	0	0	0.13	0	0.07	0.06	0.23	0	0	0.07	0	0	0.15	0	1
c. Tutuaca Population																		
SampleID	T0739-2_Tut	T0839-2_Tut	T0939-1_Tut	T1339-2_Tut	3711-2_Tut													
T0739-2_Tut	1																	
T0839-2_Tut	0	1																
T0939-1_Tut	0	0	1															
T1339-2_Tut	0	0.02	0	1														
3711-2_Tut	0.01	0	0	0	1													

Table S7: Proportions of self-assignment of wild and captive individuals to the wild populations

***Treating Last Population as Unknown**

Data Sheet BTM_Partition
Data Title BTM_Reduced_3/20/21

No. Loci 10
No. Samples 48
No. Pops. 3
Zero Freq. = 0.01

Summary of Population Assignment Outcomes to 'Self' or 'Other' Population (With Leave One Out Option)

Pop	Self Pop	Other Pop
NWild	8	1
SWild	10	
Total	18	1
Percent	95%	5%

Assignment Values (With Leave One Out Option)

Sample	Pop	NWild	SWild	Captive	Assigned Pop
NWild_Muestra28	NWild	-9.318	-11.320	0.000	1 NWild
Muestra41_NWild	NWild	-10.883	-11.758	0.000	1 NWild
Muestra49_NWild	NWild	-15.388	-8.596	0.000	2 SWild
Muestra25_NWild	NWild	-11.268	-13.293	0.000	1 NWild
Muestra31_NWild	NWild	-11.980	-15.802	0.000	1 NWild
Muestra36_NWild	NWild	-9.910	-13.906	0.000	1 NWild
Muestra40_NWild	NWild	-10.856	-11.133	0.000	1 NWild
Muestra43_NWild	NWild	-11.199	-18.513	0.000	1 NWild
Muestra46_NWild	NWild	-7.976	-9.039	0.000	1 NWild
SWild_Muestra60	SWild	-10.092	-7.826	0.000	2 SWild
Muestra63_SWild	SWild	-15.601	-12.433	0.000	2 SWild
Muestra69_SWild	SWild	-9.321	-6.816	0.000	2 SWild
Muestra72_SWild	SWild	-13.983	-11.990	0.000	2 SWild
Muestra74_SWild	SWild	-11.643	-10.403	0.000	2 SWild
Muestra76_SWild	SWild	-9.560	-6.816	0.000	2 SWild
Muestra77_SWild	SWild	-12.634	-8.294	0.000	2 SWild
Muestra19_SWild	SWild	-10.791	-10.442	0.000	2 SWild
Muestra47_SWild	SWild	-9.494	-7.836	0.000	2 SWild
Muestra48_SWild	SWild	-9.965	-6.573	0.000	2 SWild
Capt_821	Captive	-12.455	-13.887	0.000	1 NWild
457_Capt	Captive	-11.330	-11.501	0.000	1 NWild
296_Capt	Captive	-16.342	-18.835	0.000	1 NWild
877_Capt	Captive	-6.589	-9.277	0.000	1 NWild
38_Capt	Captive	-15.277	-12.155	0.000	2 SWild
805_Capt	Captive	-7.249	-12.154	0.000	1 NWild

Supplemental Information for: Genetic Diversity and Population Structure of Two Endangered Neotropical Parrots Inform *In Situ* and *Ex Situ* Conservation Strategies, Campos et al, 2021 - Diversity

17_Capt	Captive	-14.983	-17.080	0.000	1	NWild
63_Capt	Captive	-10.881	-12.806	0.000	1	NWild
961_Capt	Captive	-15.048	-15.534	0.000	1	NWild
1079_Capt	Captive	-15.071	-14.635	0.000	2	SWild
973_Capt	Captive	-9.559	-12.547	0.000	1	NWild
WPP_TX_1606_1.0_Capt	Captive	-10.044	-11.685	0.000	1	NWild
1068_Capt	Captive	-12.462	-8.793	0.000	2	SWild
1013_Capt	Captive	-9.152	-9.164	0.000	1	NWild
996_Capt	Captive	-13.928	-12.966	0.000	2	SWild
983_Capt	Captive	-14.456	-10.772	0.000	2	SWild
806_Capt	Captive	-10.342	-13.237	0.000	1	NWild
772_Capt	Captive	-12.212	-12.590	0.000	1	NWild
812_Capt	Captive	-10.631	-10.820	0.000	1	NWild
786_Capt	Captive	-10.685	-13.346	0.000	1	NWild
765_Capt	Captive	-8.731	-11.989	0.000	1	NWild
871_Capt	Captive	-10.472	-12.085	0.000	1	NWild
779_Capt	Captive	-12.537	-13.110	0.000	1	NWild
809_Capt	Captive	-13.065	-12.751	0.000	2	SWild
Muestra53_Capt	Captive	-8.750	-11.020	0.000	1	NWild
Muestra64_Capt	Captive	-11.868	-11.360	0.000	2	SWild
Muestra65_Capt	Captive	-9.096	-9.348	0.000	1	NWild
Muestra66_Capt	Captive	-11.194	-12.738	0.000	1	NWild
Muestra67_Capt	Captive	-13.881	-18.303	0.000	1	NWild

Data Sheet TBP_Partition
Data Title TBP_Reduced_3/20/21

No. Loci 10
No. Samples 42
No. Pops. 3
Zero Freq. = 0.01

Summary of Population Assignment Outcomes to 'Self' or 'Other' Population (With Leave One Out Option)

Pop	Self Pop	Other Pop
Madera	8	2
Tutuaca	3	2
Total	11	4
Percent	73%	27%

Assignment Values (With Leave One Out Option)

Sample	Pop	Madera	Tutuaca	Captive	Assigned Pop
Wild_291201_Mad	Madera	-7.443	-11.171	0.000	1 Madera
1376_Mad	Madera	-11.945	-12.569	0.000	1 Madera
003_Mad	Madera	-12.650	-12.567	0.000	2 Tutuaca
230210_Mad	Madera	-8.527	-12.852	0.000	1 Madera

Supplemental Information for: Genetic Diversity and Population Structure of Two Endangered Neotropical Parrots Inform *In Situ* and *Ex Situ* Conservation Strategies, Campos et al, 2021 - Diversity

291502_Mad	Madera	-8.992	-11.655	0.000	1	Madera
M0129-1_Mad	Madera	-9.865	-8.745	0.000	2	Tutuaca
X5-46_Mad	Madera	-9.949	-14.268	0.000	1	Madera
2302-40_Mad	Madera	-6.457	-12.199	0.000	1	Madera
2604_42Mad	Madera	-8.826	-9.819	0.000	1	Madera
M1628-1_Mad	Madera	-8.375	-12.958	0.000	1	Madera
T0739-2_Tut	Tutuaca	-10.464	-10.288	0.000	2	Tutuaca
T0839-2_Tut	Tutuaca	-11.937	-11.275	0.000	2	Tutuaca
T0939-1_Tut	Tutuaca	-11.451	-11.901	0.000	1	Madera
T1339-2_Tut	Tutuaca	-11.771	-11.372	0.000	2	Tutuaca
3711-2_Tut	Tutuaca	-11.287	-13.693	0.000	1	Madera
Captive_513_Capt	Captive	-8.784	-8.502	0.000	2	Tutuaca
111_Capt	Captive	-6.788	-4.692	0.000	2	Tutuaca
228_Capt	Captive	-8.384	-11.393	0.000	1	Madera
468_Capt	Captive	-9.798	-10.296	0.000	1	Madera
592_Capt	Captive	-9.150	-10.062	0.000	1	Madera
216_Capt	Captive	-6.304	-9.044	0.000	1	Madera
82_Capt	Captive	-8.739	-9.247	0.000	1	Madera
421_Capt	Captive	-10.968	-12.597	0.000	1	Madera
240_Capt	Captive	-8.786	-10.025	0.000	1	Madera
106_Capt	Captive	-9.397	-10.472	0.000	1	Madera
200_Capt	Captive	-9.066	-10.472	0.000	1	Madera
274_Capt	Captive	-11.905	-11.694	0.000	2	Tutuaca
527_Capt	Captive	-7.975	-13.074	0.000	1	Madera
659_Capt	Captive	-8.710	-12.016	0.000	1	Madera
502_Capt	Captive	-8.871	-12.859	0.000	1	Madera
527_Capt	Captive	-8.498	-12.074	0.000	1	Madera
450_Capt	Captive	-7.519	-11.773	0.000	1	Madera
386_Capt	Captive	-9.004	-11.521	0.000	1	Madera
544_Capt	Captive	-9.627	-10.393	0.000	1	Madera
148_Capt	Captive	-8.125	-6.141	0.000	2	Tutuaca
149_Capt	Captive	-8.898	-11.104	0.000	1	Madera
37_Capt	Captive	-5.544	-9.965	0.000	1	Madera
587_Capt	Captive	-8.847	-10.560	0.000	1	Madera
227_Capt	Captive	-11.255	-7.493	0.000	2	Tutuaca
640_Capt	Captive	-8.022	-13.074	0.000	1	Madera
503_Capt	Captive	-11.673	-15.023	0.000	1	Madera
556_Capt	Captive	-9.163	-8.326	0.000	2	Tutuaca

Supplemental Information for: Genetic Diversity and Population Structure of Two Endangered Neotropical Parrots Inform *In Situ* and *Ex Situ* Conservation Strategies, Campos et al, 2021 - Diversity

Table S8: Evanno Table output from STRUCTURE Harvester based on 10 iterations of STRUCTURE output and number of clusters (K) ranging from 1 to 10

Blue-throated macaw						
K	Repetitions	Mean LnP(K)	Stdev LnP(K)	Ln'(K)	 Ln''(K) 	Delta K
1	10	-498.6	0.8832	NA	NA	NA
2	10	-500.51	4.1786	-1.91	2.18	0.521701
3	10	-500.24	4.9437	0.27	1.5	0.303415
4	10	-498.47	2.0688	1.77	1.76	0.850717
5	10	-498.46	0.726	0.01	0.67	0.922834
6	10	-499.12	0.7685	-0.66	1.65	2.146904
7	10	-498.13	1.1748	0.99	0.93	0.791637
8	10	-498.07	1.2157	0.06	1.21	0.995324
9	10	-499.22	1.9993	-1.15	1.44	0.72024
10	10	-498.93	2.6758	0.29	NA	NA

Thick-billed parrot						
K	Repetitions	Mean LnP(K)	Stdev LnP(K)	Ln'(K)	 Ln''(K) 	Delta K
1	10	-368.33	0.3401	NA	NA	NA
2	10	-368.2	1.3115	0.13	0.3	0.228748
3	10	-368.37	0.9989	-0.17	0.17	0.17018
4	10	-368.71	1.511	-0.34	0.71	0.469877
5	10	-368.34	1.8167	0.37	0.82	0.451365
6	10	-368.79	1.5191	-0.45	0.9	0.592456
7	10	-368.34	1.3343	0.45	0.14	0.104921
8	10	-368.03	1.3736	0.31	0.61	0.444088
9	10	-368.33	1.0853	-0.3	0.49	0.451486
10	10	-368.14	1.5123	0.19	NA	NA

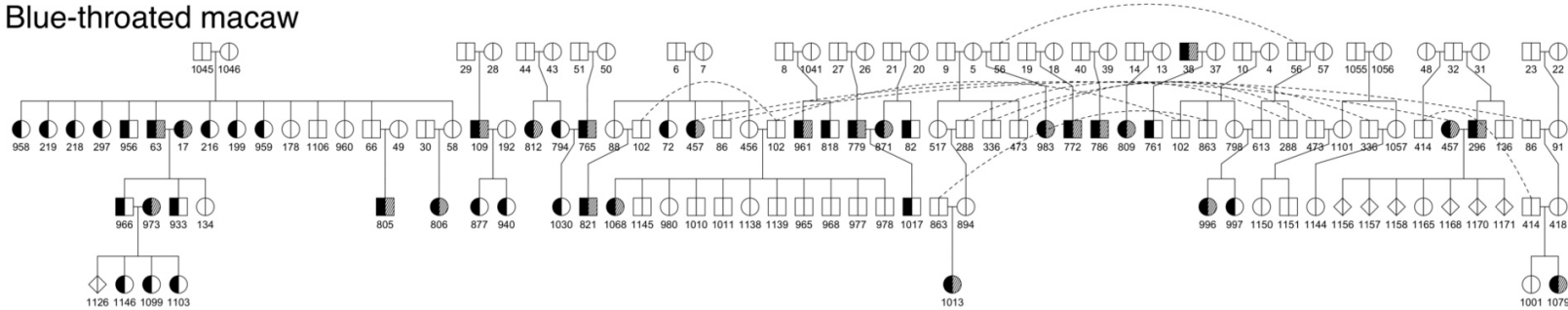
Supplemental Information for: Genetic Diversity and Population Structure of Two Endangered Neotropical Parrots Inform *In Situ* and *Ex Situ* Conservation Strategies, Campos et al, 2021 - Diversity

Figure Legend

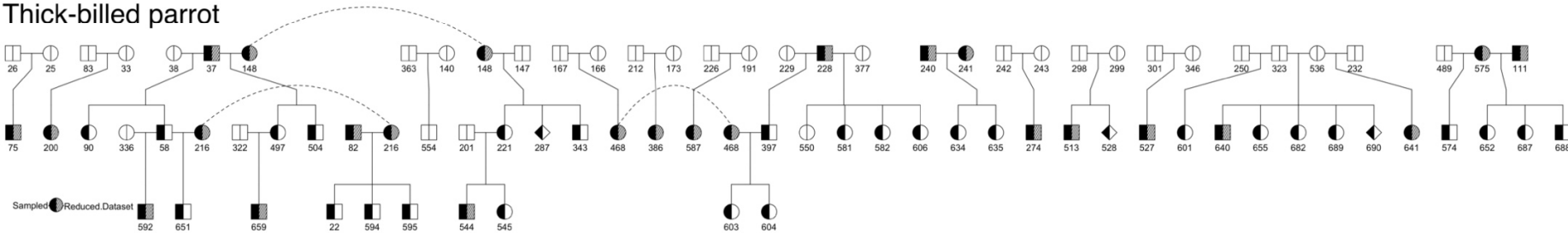
Figure S1: Captive pedigrees for the blue-throated macaw and thick-billed parrot. Pedigree was constructed to one generation above any sampled individuals when possible.

Figure S1

Blue-throated macaw



Thick-billed parrot



Supplemental Information for: Genetic Diversity and Population Structure of Two Endangered Neotropical Parrots Inform *In Situ* and *Ex Situ* Conservation Strategies, Campos et al, 2021 - Diversity