

Supplementary Materials:

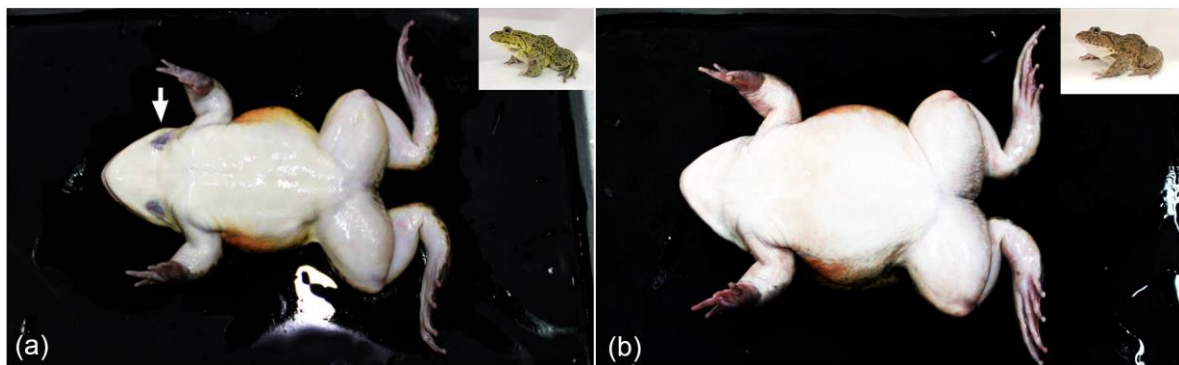
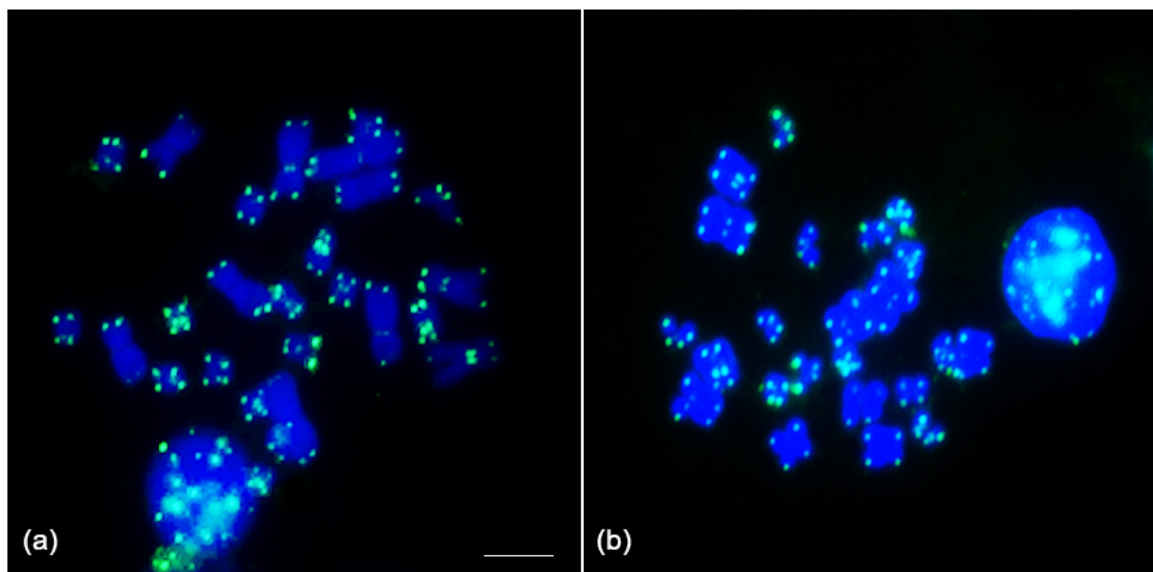


Figure S1. Morphological characteristics between (a) male and (b) female. Arrows indicate vocal sacs in male.



**Figure S2.** FISH patterns of the telomeric (TTAGGG)<sub>n</sub> sequence on DAPI-stained metaphase chromosome spreads of (a) male and (b) female rice field frog (*Hoplobatrachus rugulosus*, Wiegmann, 1834).