

Article

Impact of Hinoki Cypress Wood on Diversity of Microflora: A Case Study from Owase City Hall

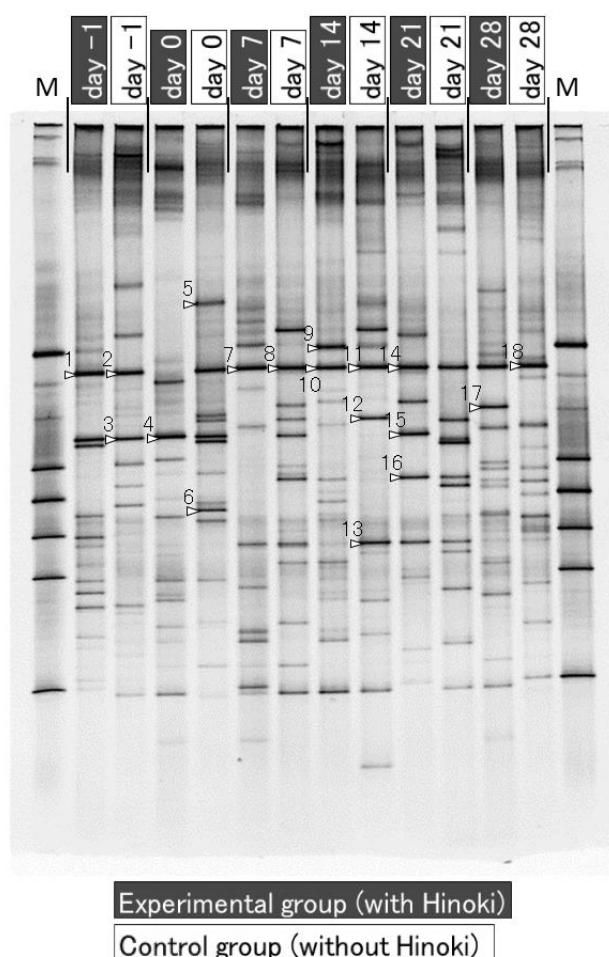


Figure S1. Denaturing gradient gel electrophoresis (DGGE) patterns of 16S rRNA gene fragments from air samples collected in rooms with (experimental group) or without (control group) Hinoki cypress material. Lanes marked M represent a DGGE marker lane consisting of 16S rRNA gene sequences from *Staphylococcus* sp., *Exiguobacterium* sp., *Escherichia coli*, *Microbacterium* sp., *Methylobacterium* sp., and *Kocuria* sp. The bands numbered (arrowheads) were excised for the sequence analysis.