

Figure S1: Puerto Morelos coral reefs. A: *Acropora palmata* colonies. B: *Orbicella annularis* colonies. C: Soft corals colonies. Photo H. Caballero-Aragón.

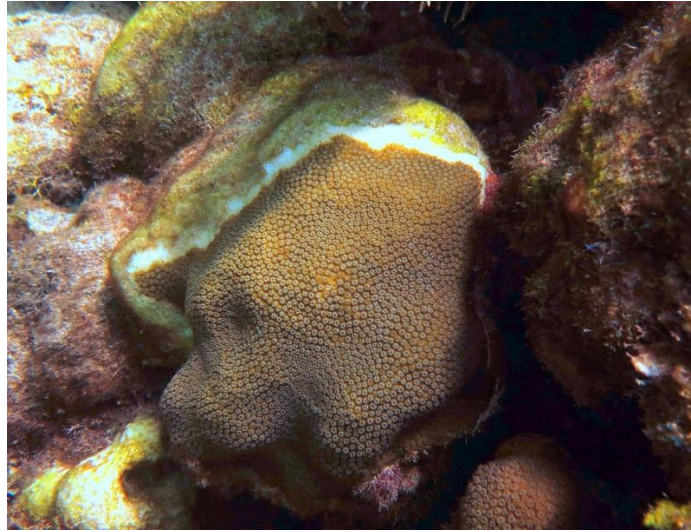


Figure S2: *Orbicella annularis* colony affected by "stony coral tissue loss disease". Photo H. Caballero-Aragón.



Figure S3: Colonies of *Agaricia tenuifolia*. Photo H. Caballero-Aragón.