

Supplementary Materials

Figure S1. *Apalone mutica* home range maps showing radio-locations, minimum convex polygons, 50%, 75%, and 95% clipped kernel density estimates (median CVh smoothing).

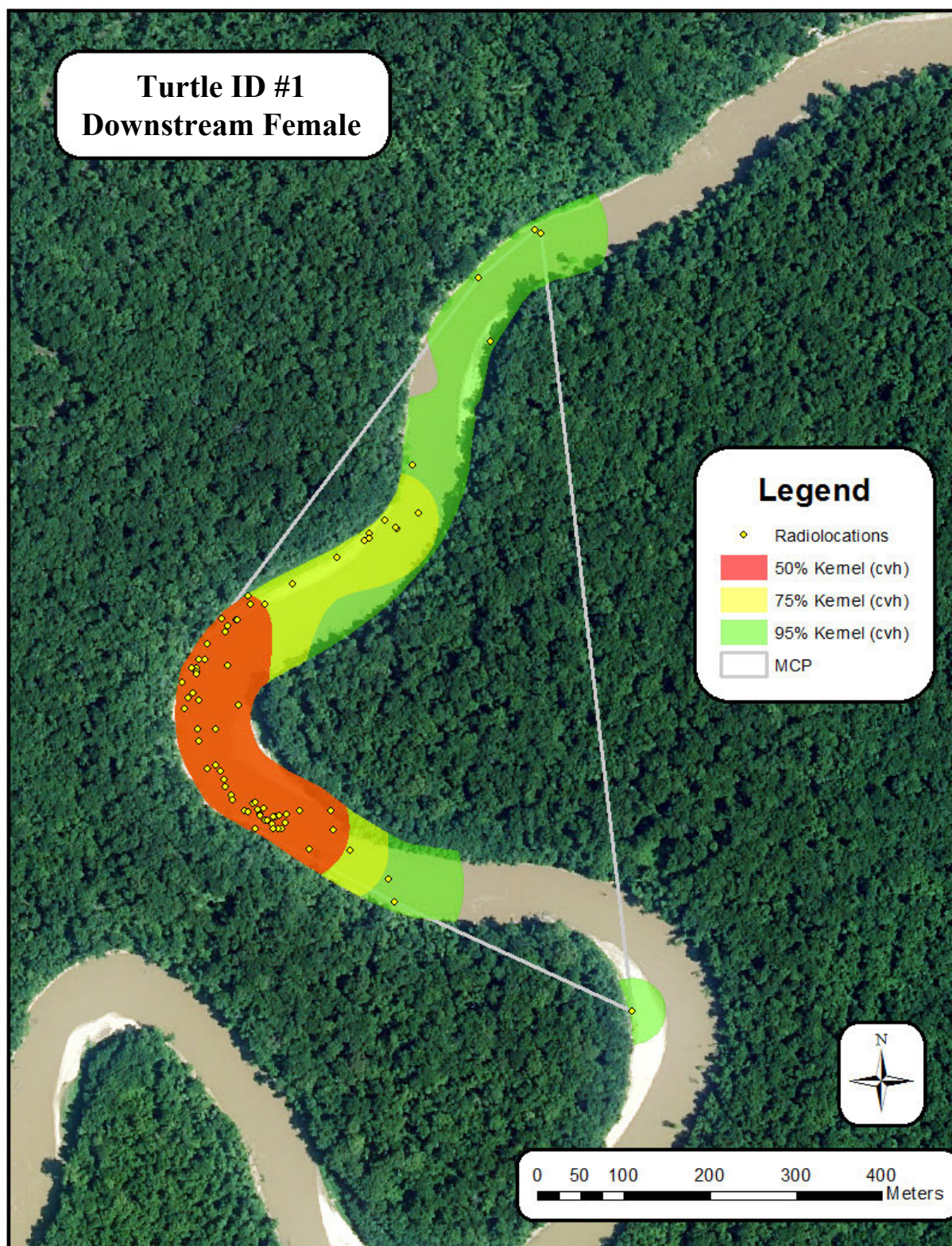


Figure S1.1: Downstream female *A. mutica* #1

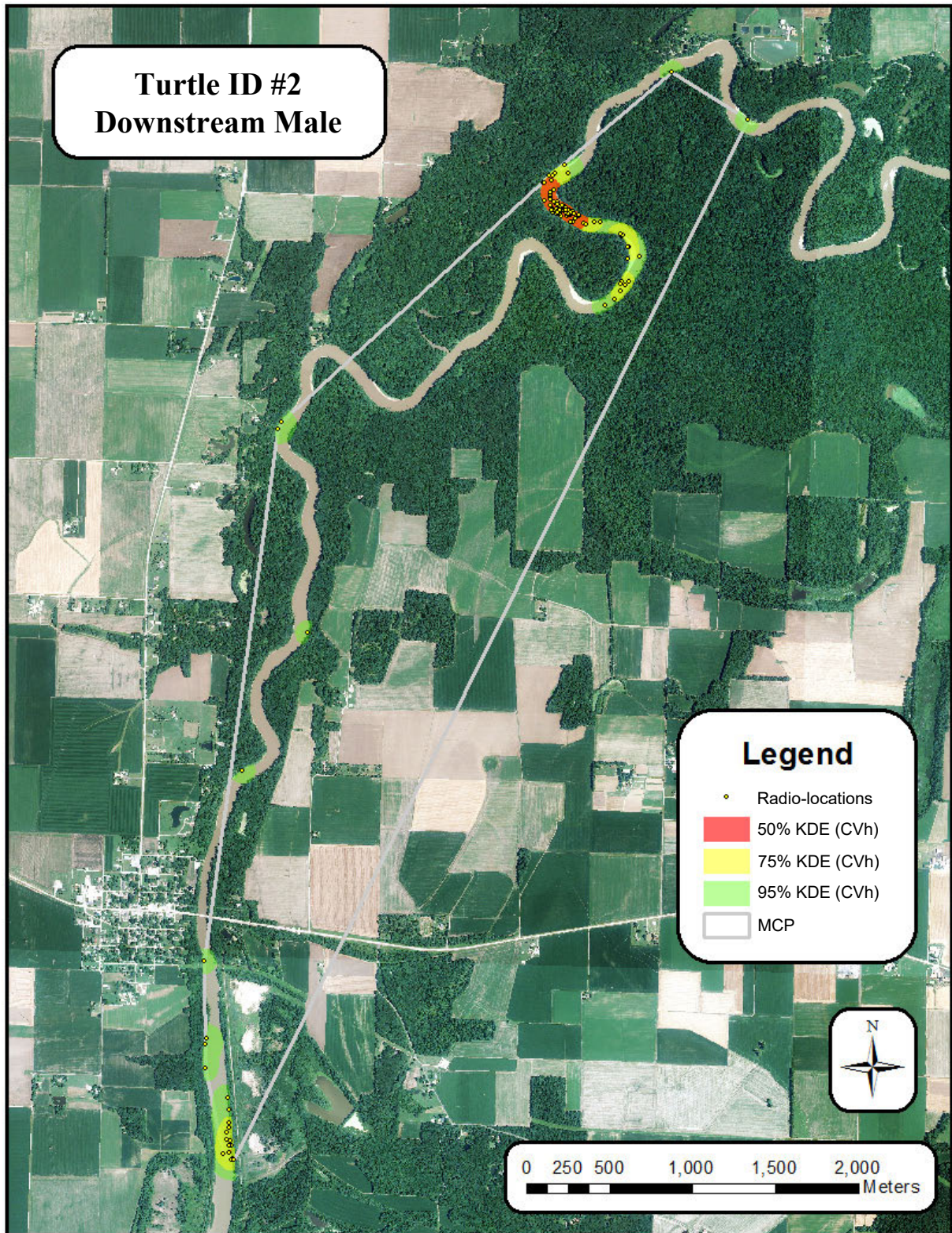


Figure S1.2: Downstream male *A. mutica* #2

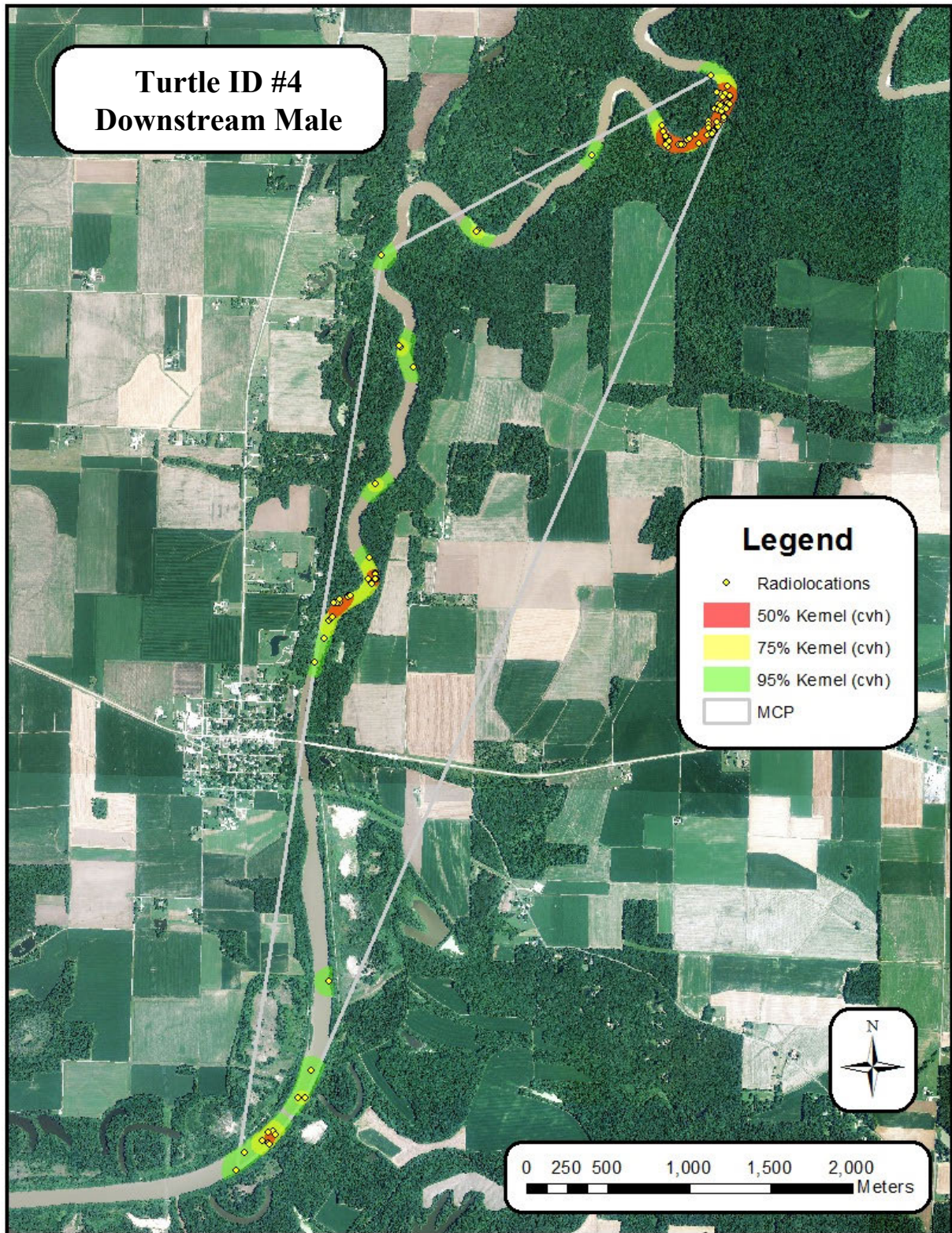


Figure S1.3: Downstream male *A. mutica* #4

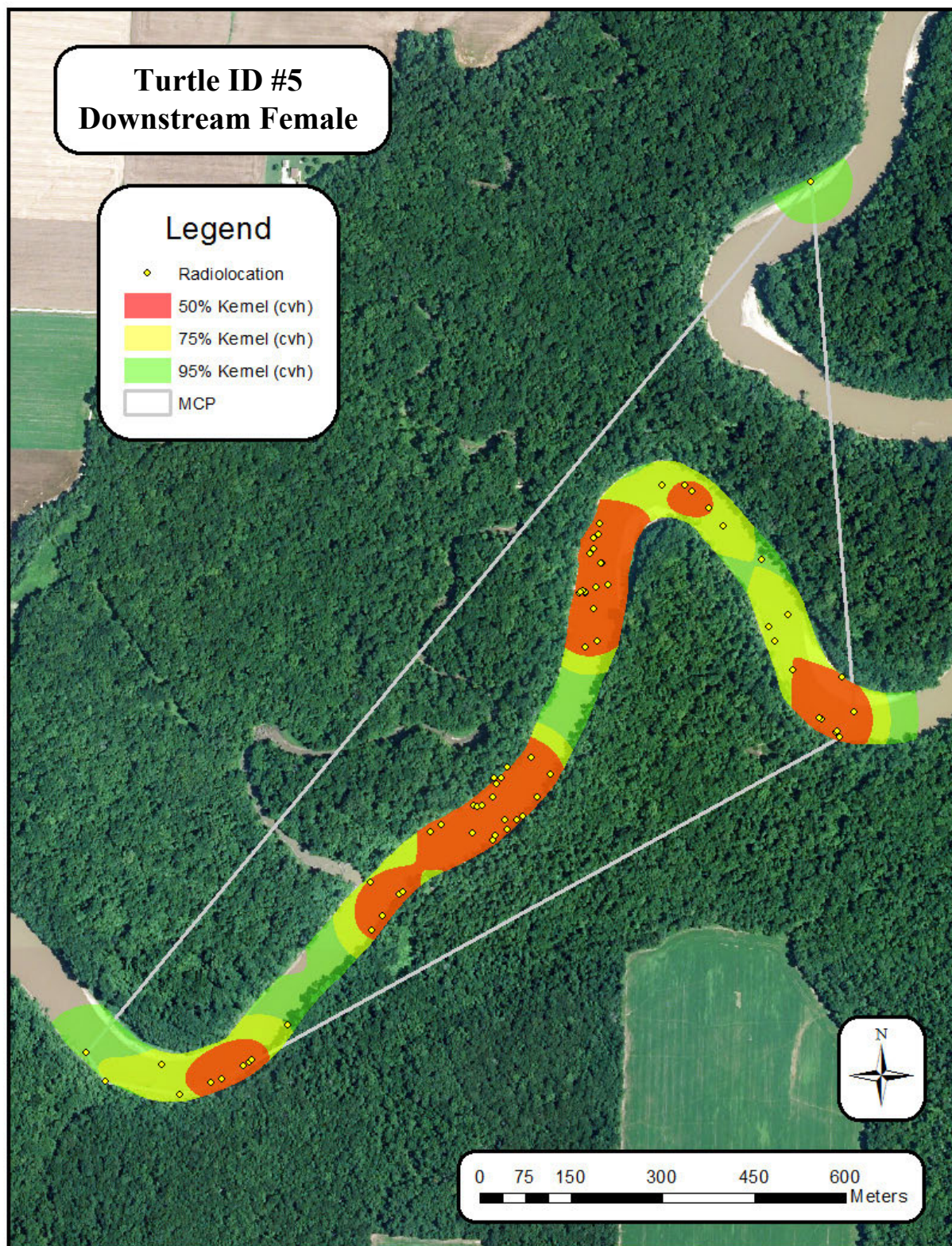


Figure S1.4: Downstream female *A. mutica* #5

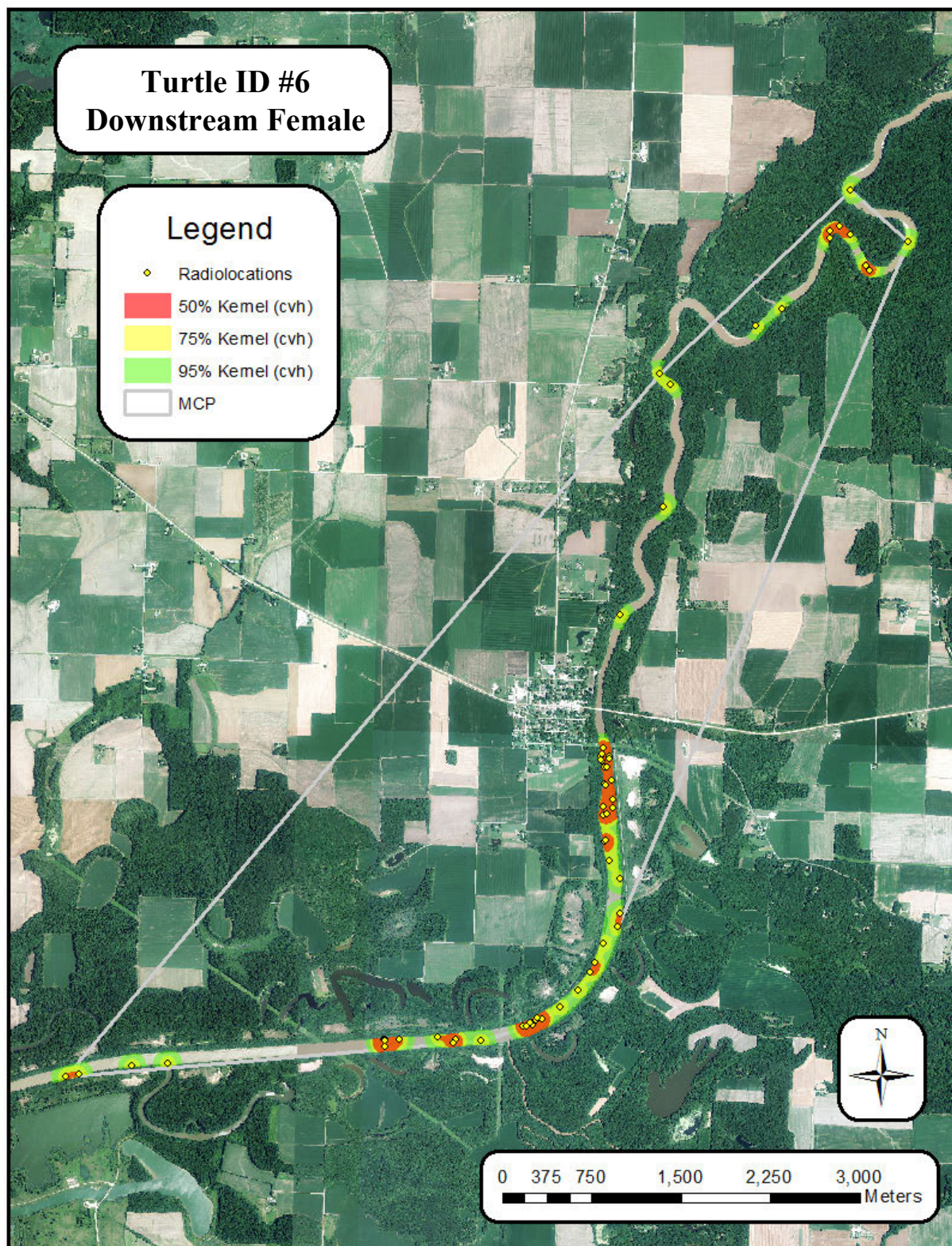


Figure S1.5: Downstream female *A. mutica* #6

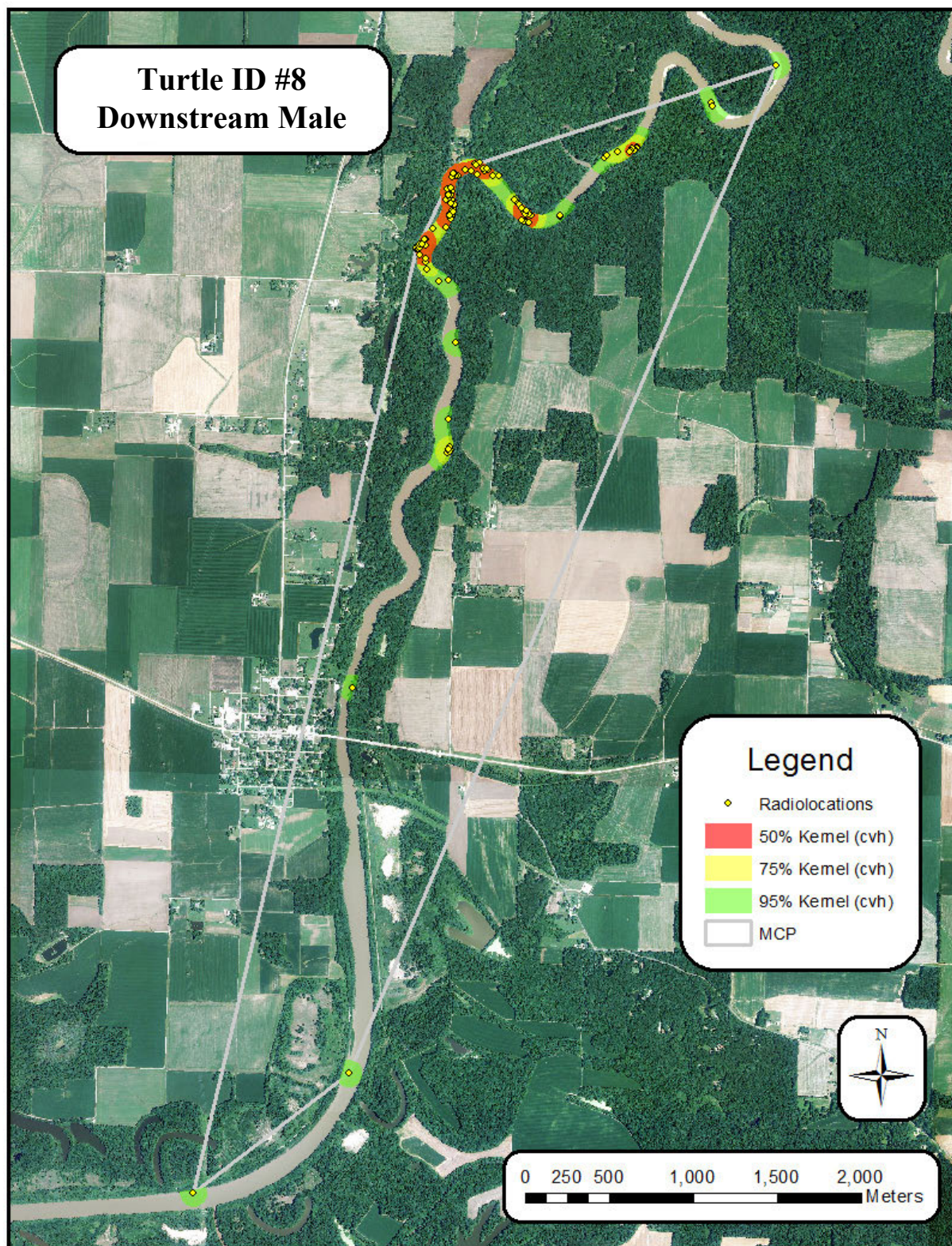


Figure S1.6: Downstream male *A. mutica* #8

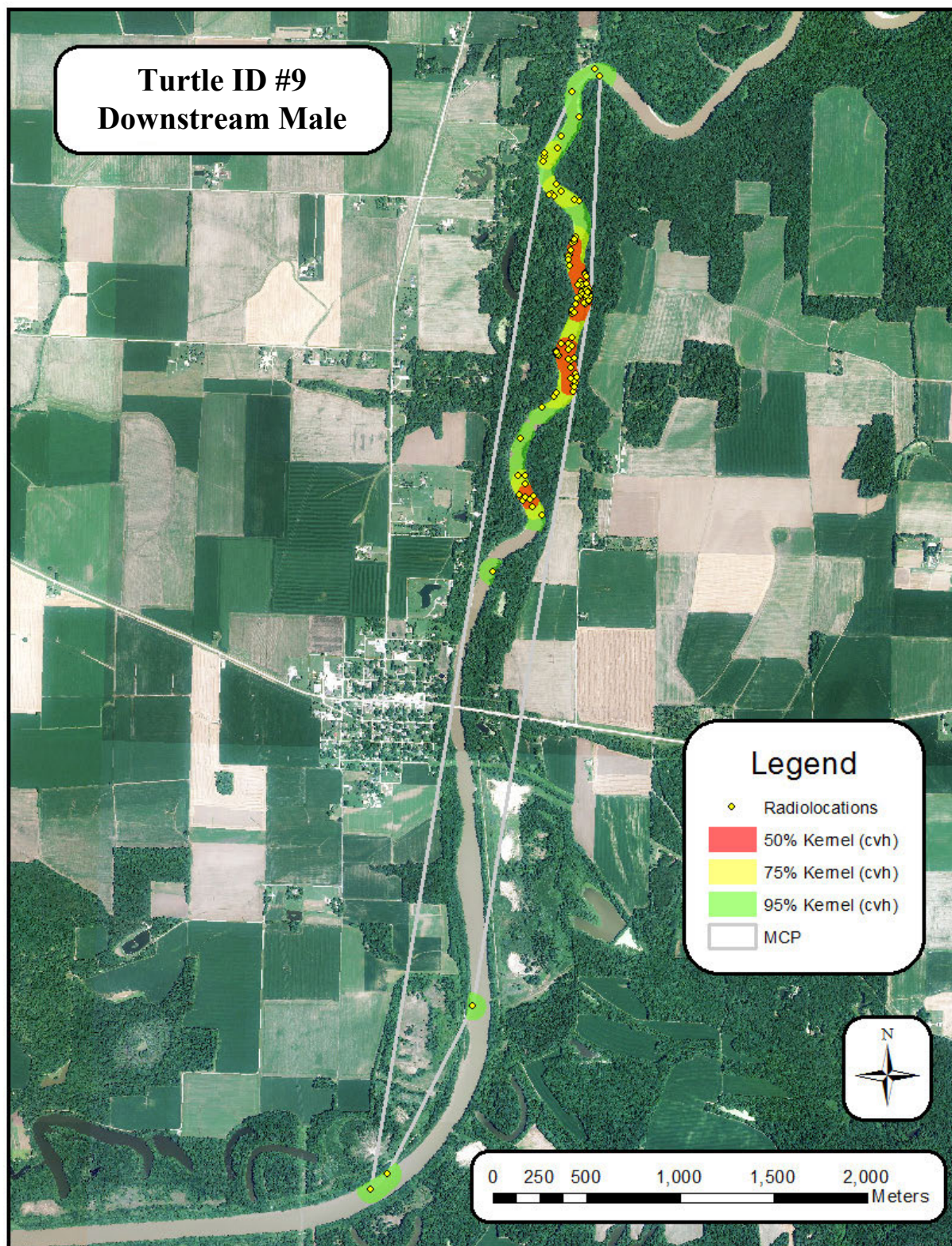


Figure S1.7: Downstream male *A. mutica* #9

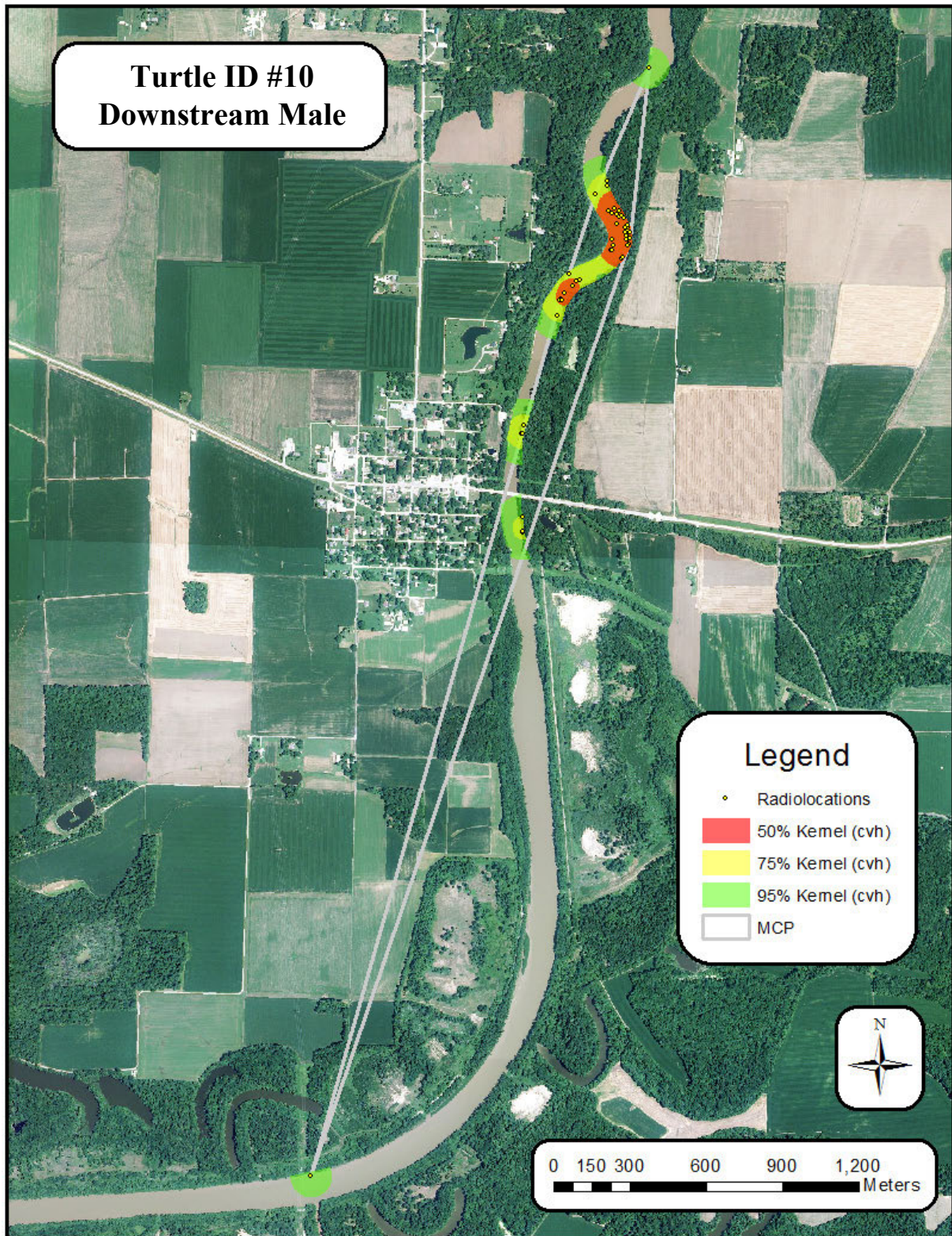


Figure S1.8: Downstream male *A. mutica* #10

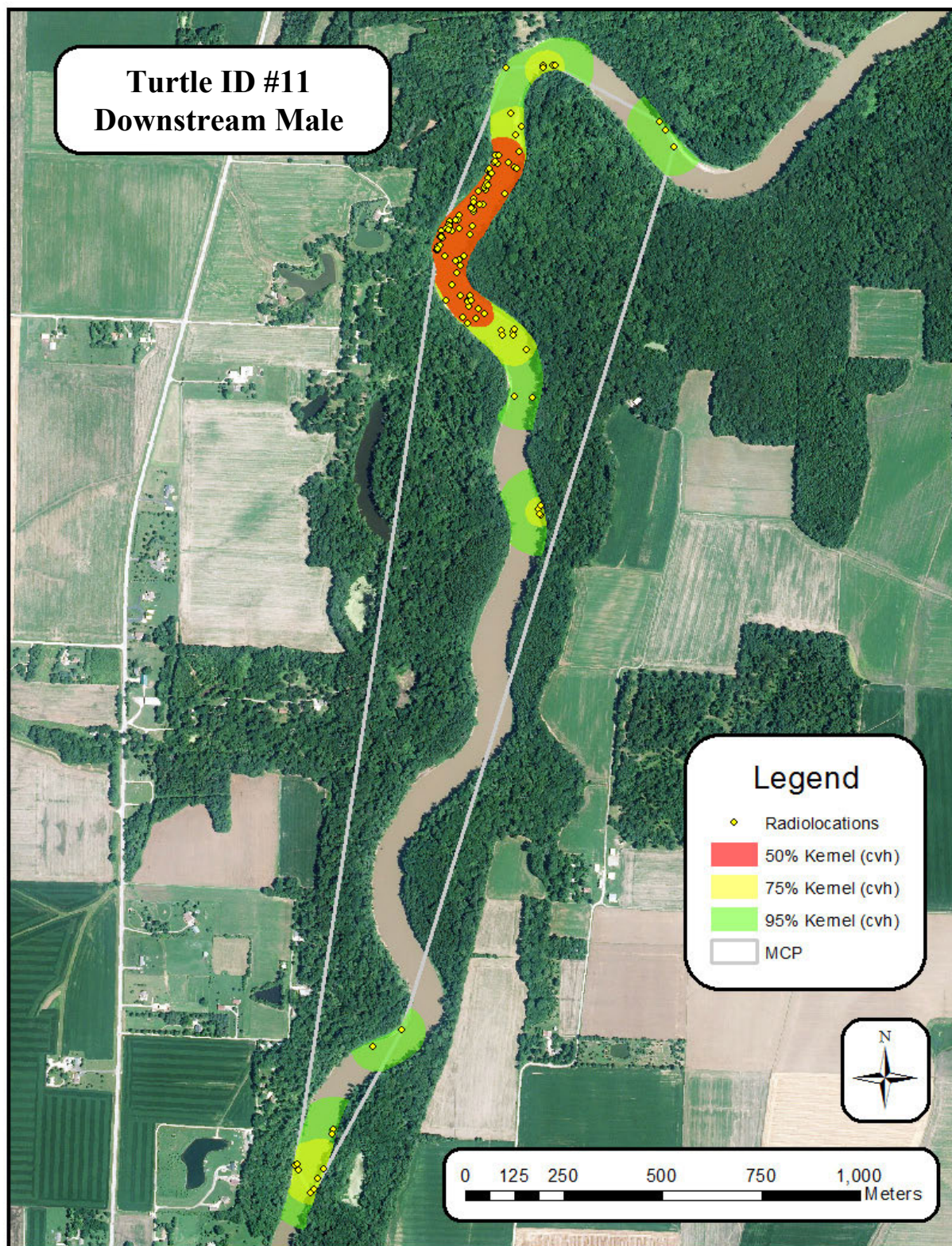


Figure S1.9: Downstream male *A. mutica* #11

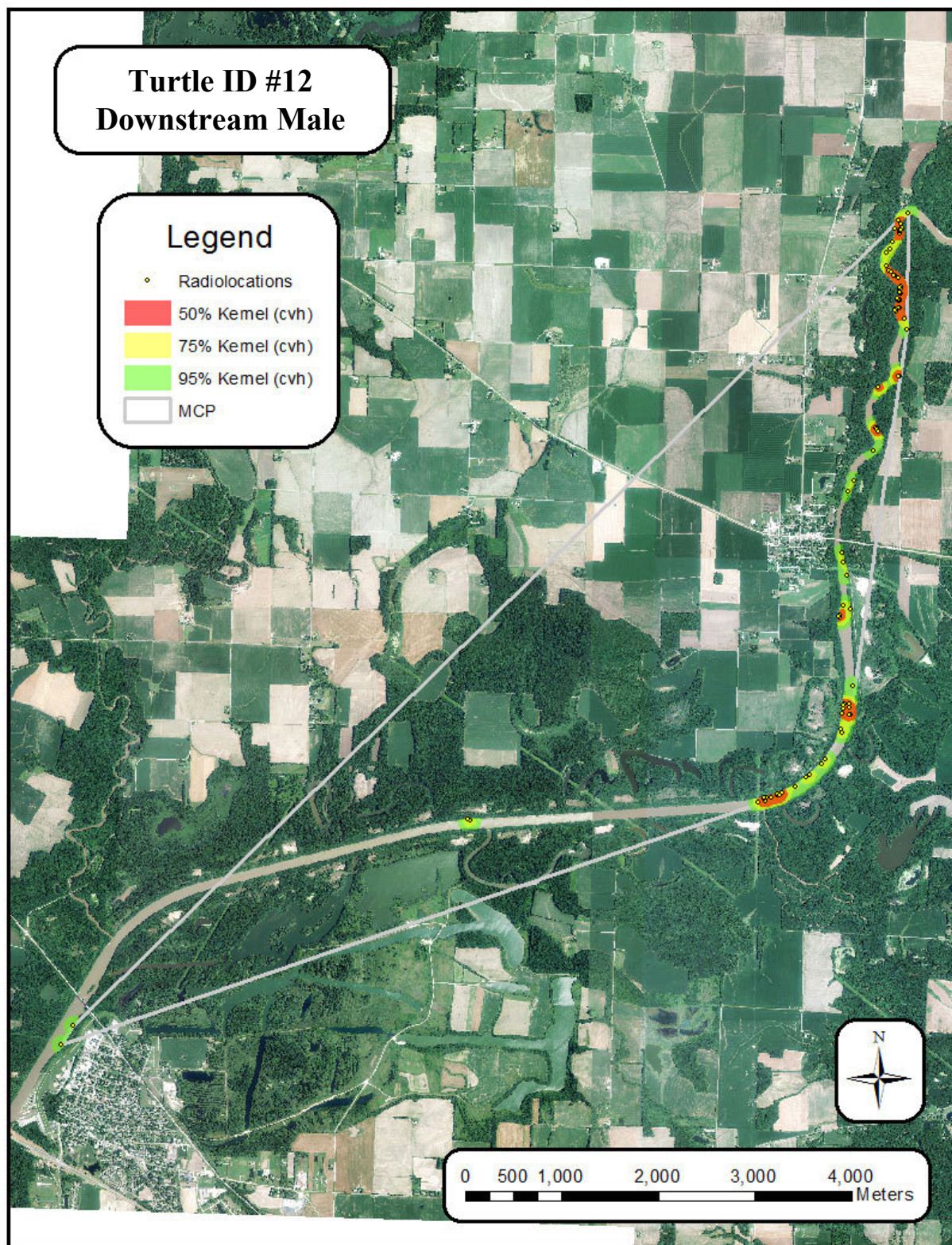


Figure S1.10: Downstream male *A. mutica* #12

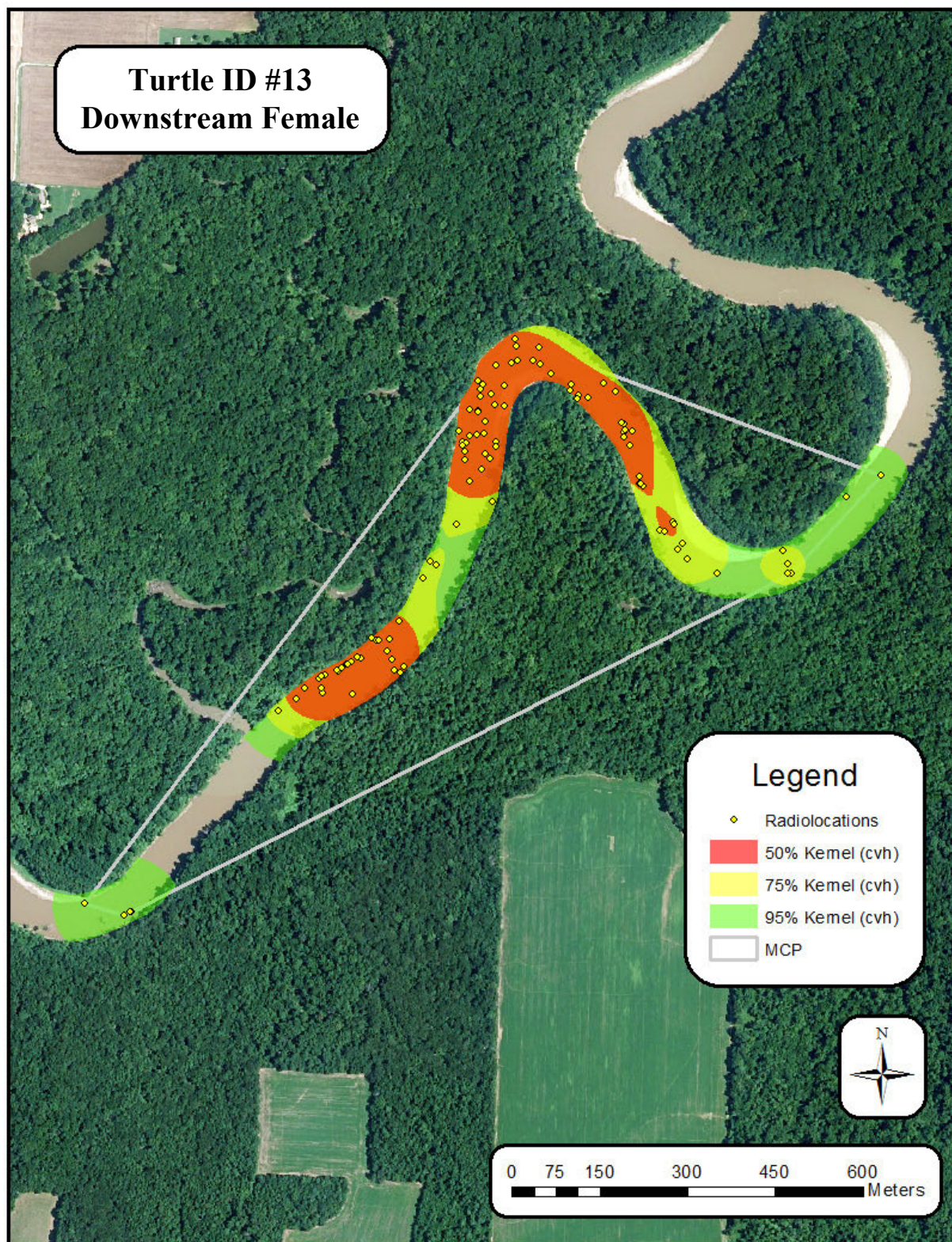


Figure S1.11: Downstream female *A. mutica* #13

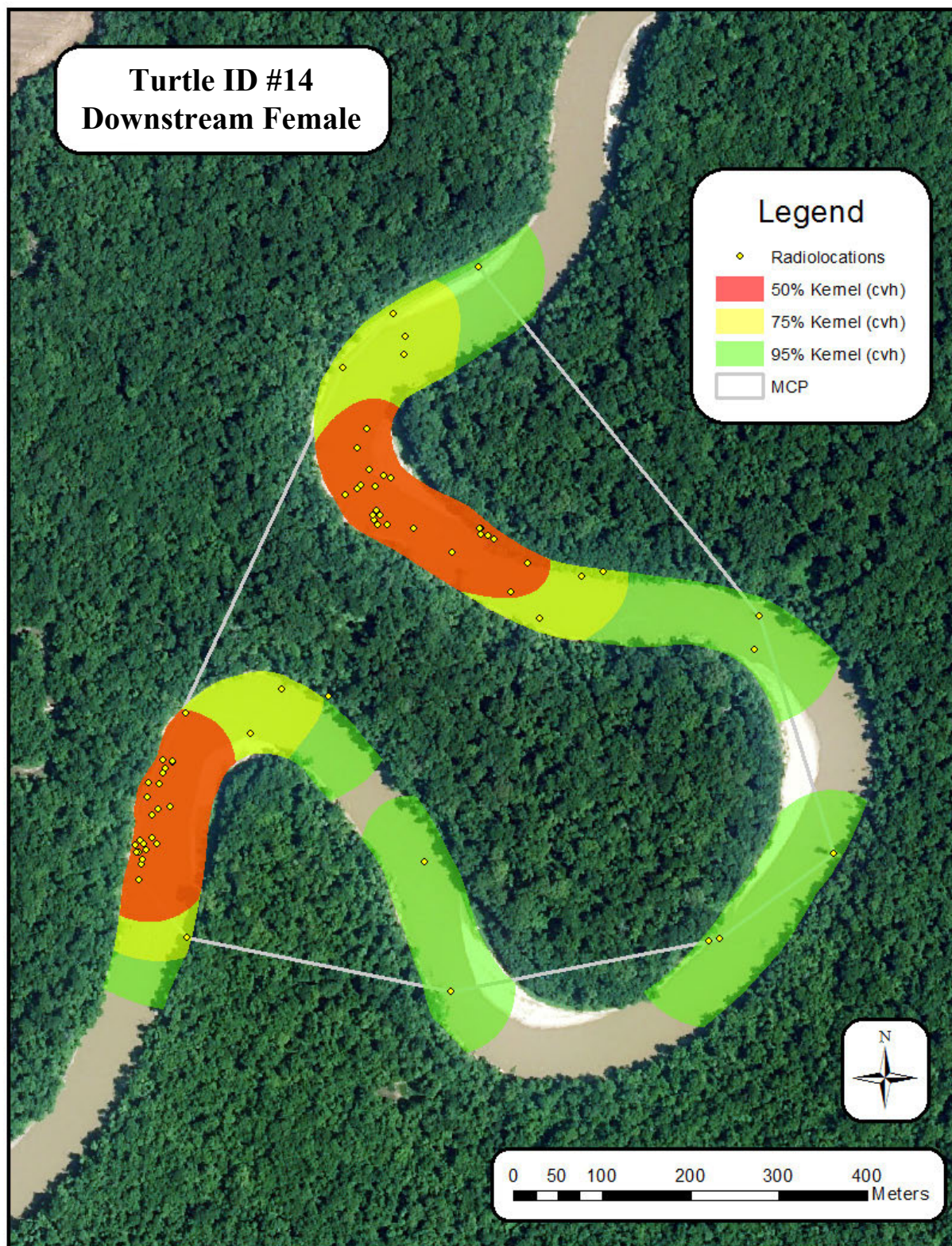


Figure S1.12: Downstream female *A. mutica* #14

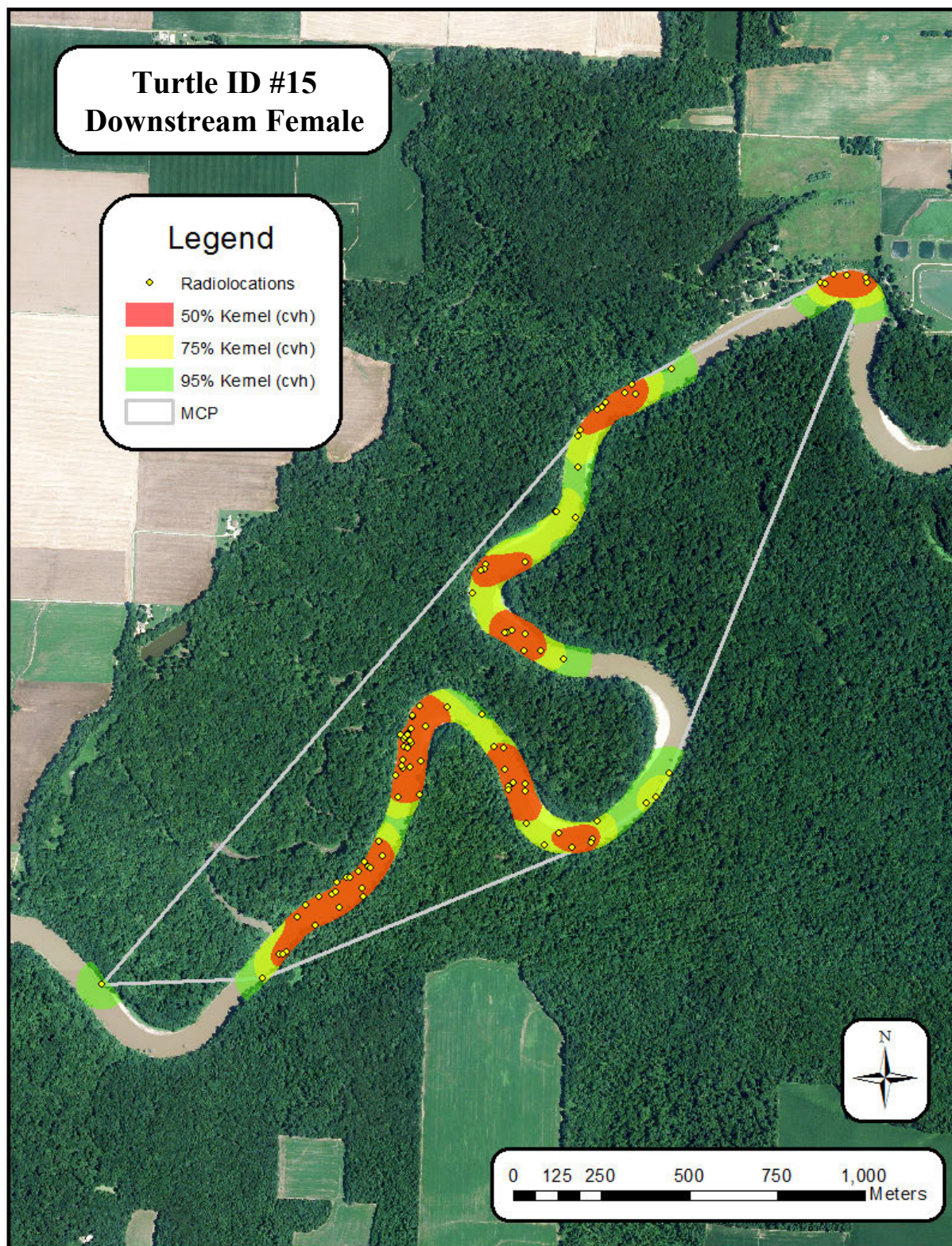


Figure S1.13: Downstream female *A. mutica* #15

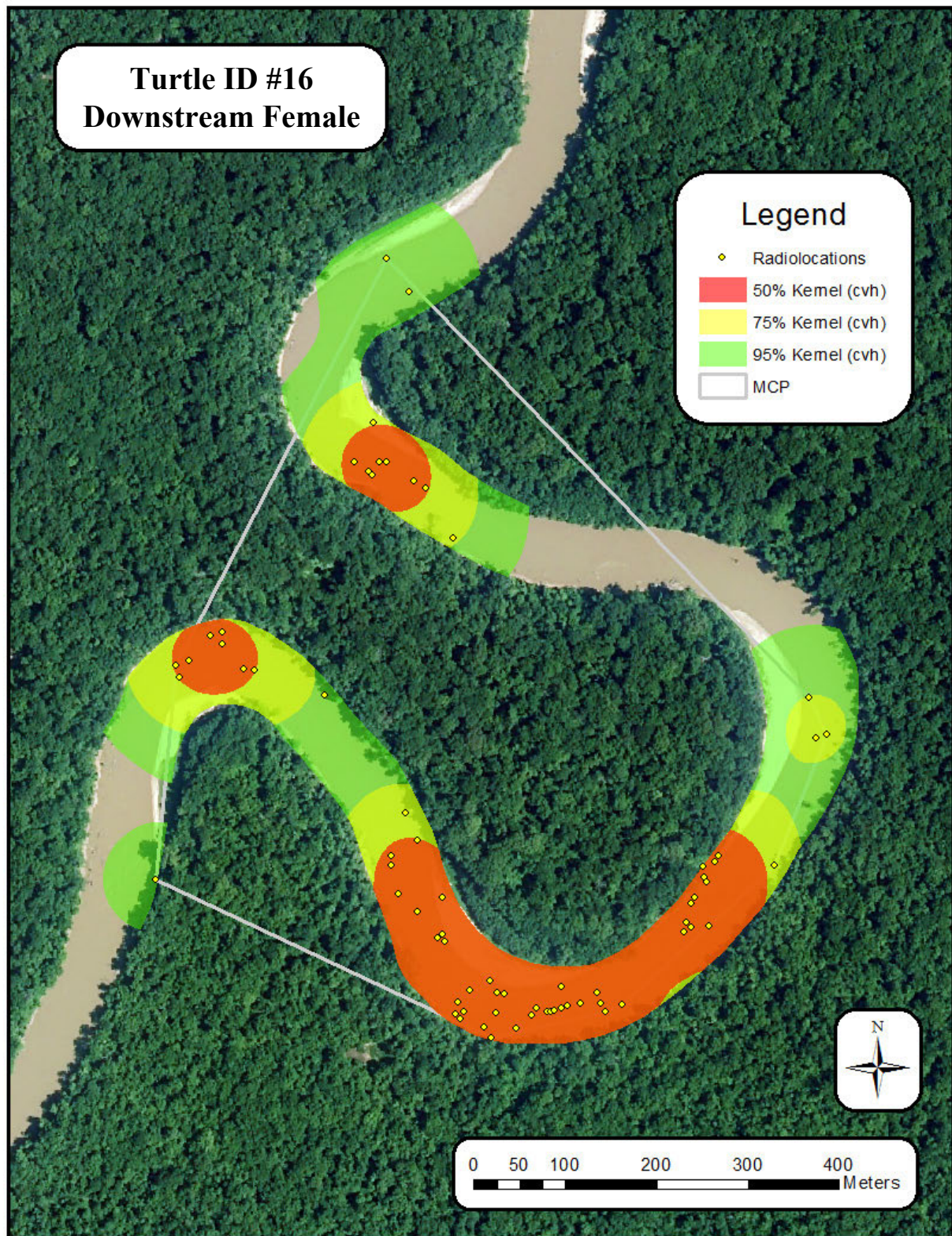


Figure S1.14: Downstream female *A. mutica* #16

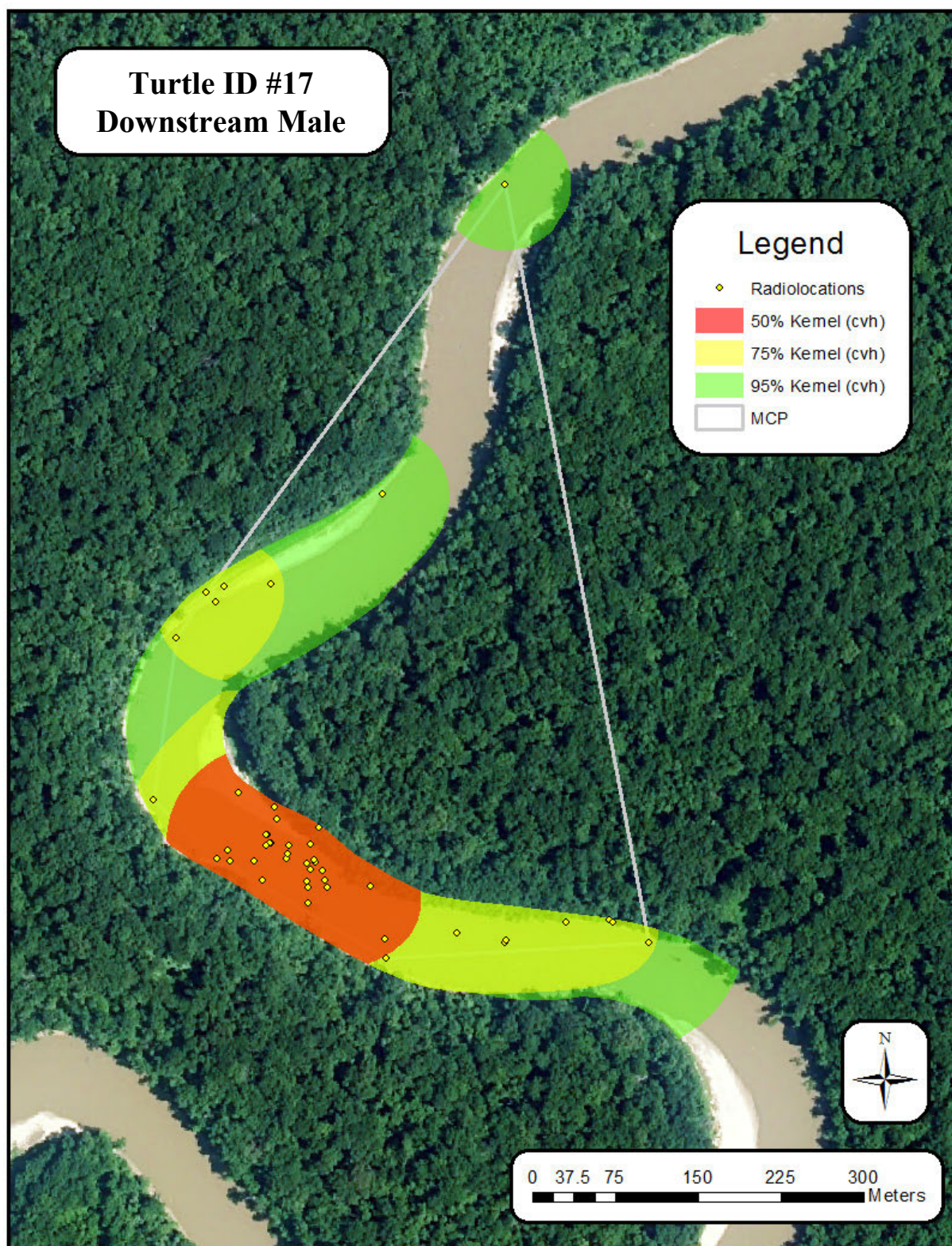


Figure S1.15: Downstream male *A. mutica* #17

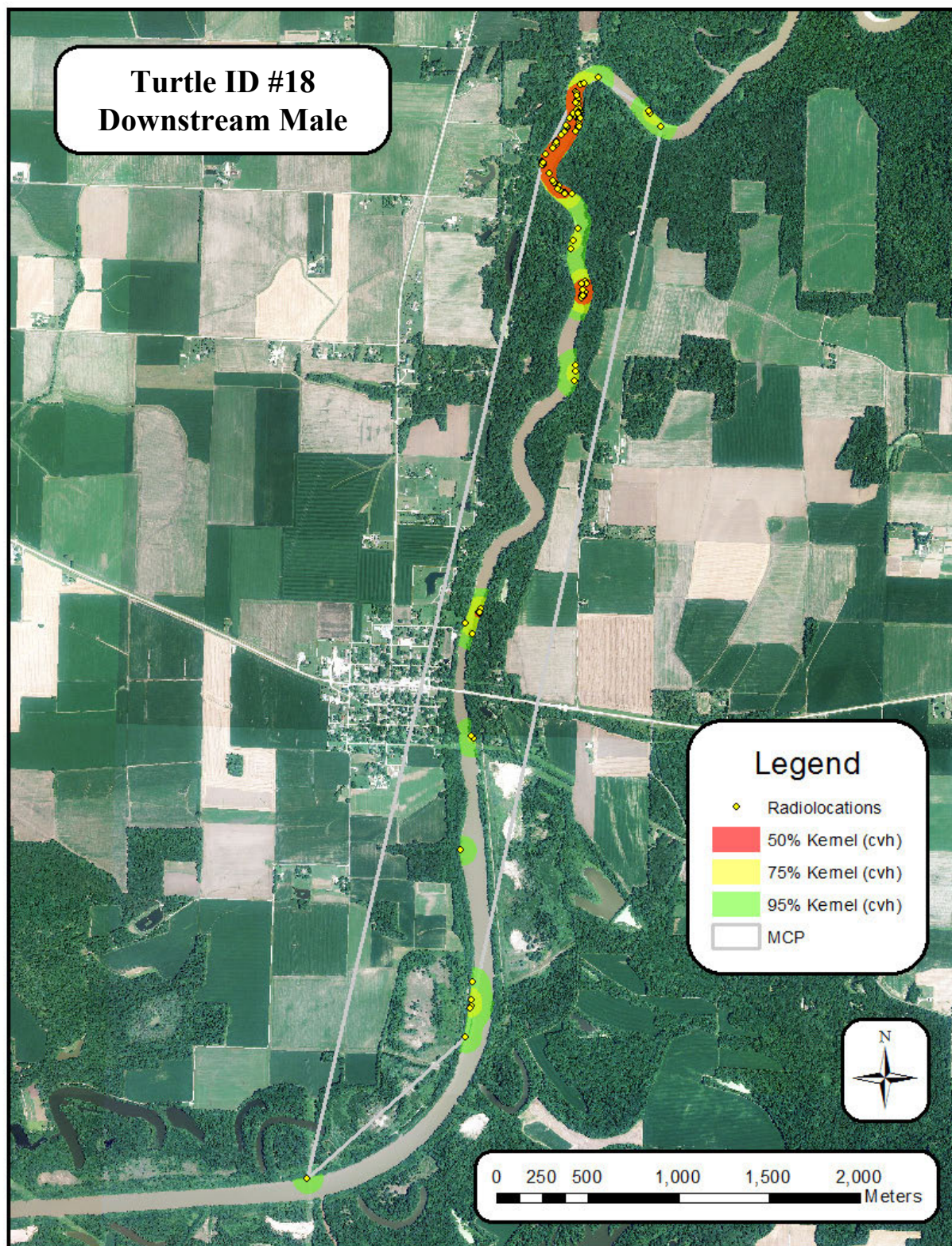


Figure S1.16: Downstream male *A. mutica* #18

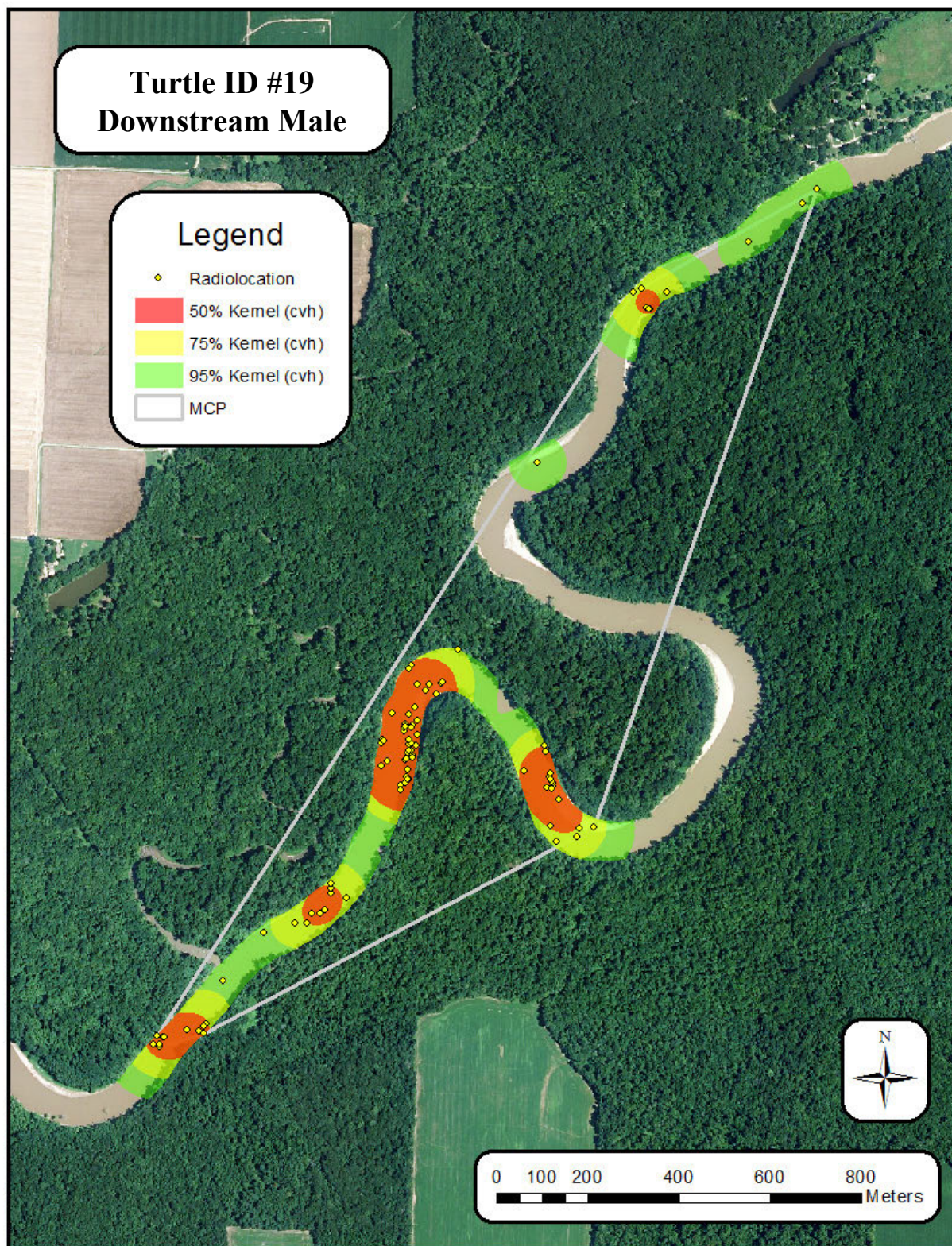


Figure S1.17: Downstream male *A. mutica* #19

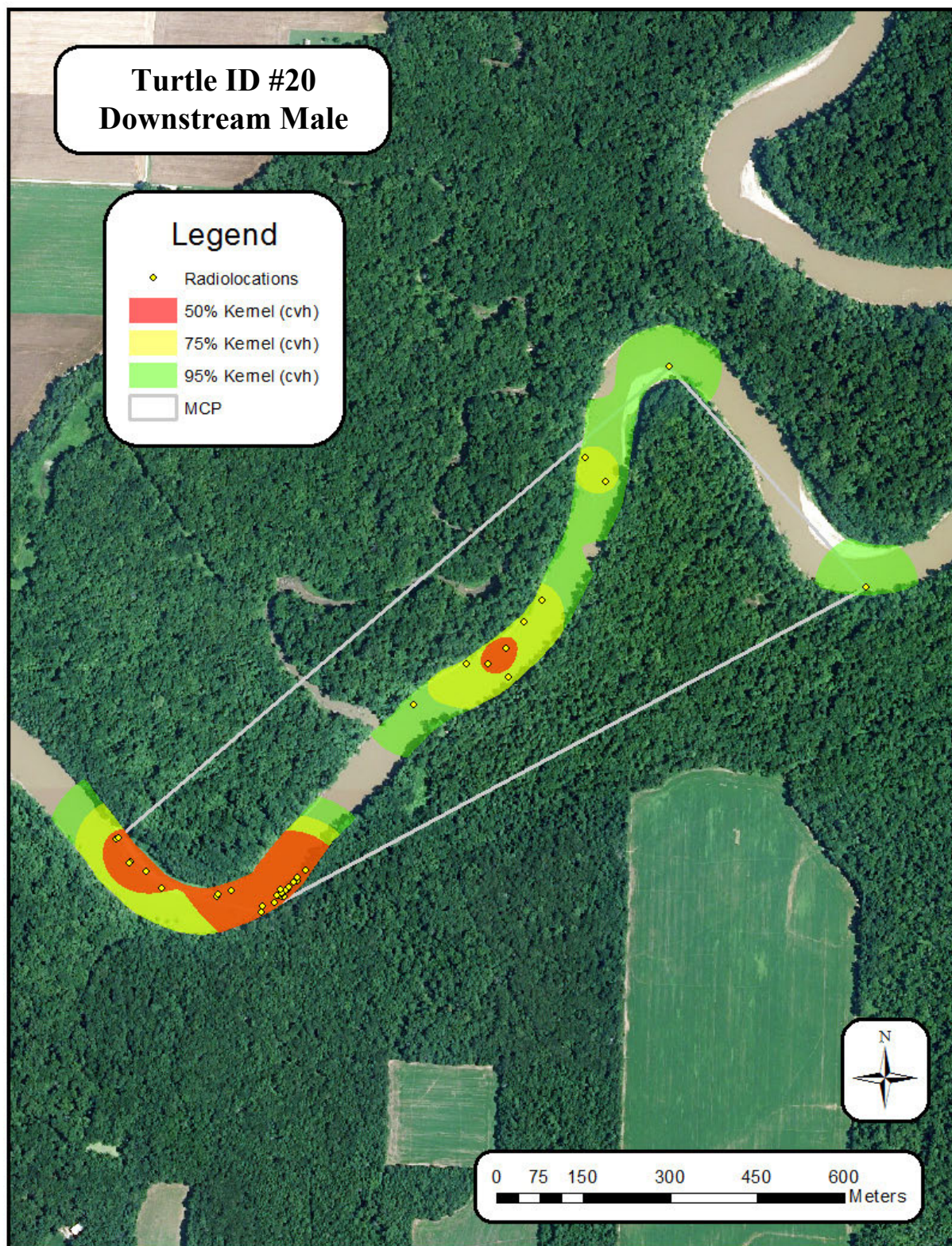


Figure S1.18: Downstream male *A. mutica* #20

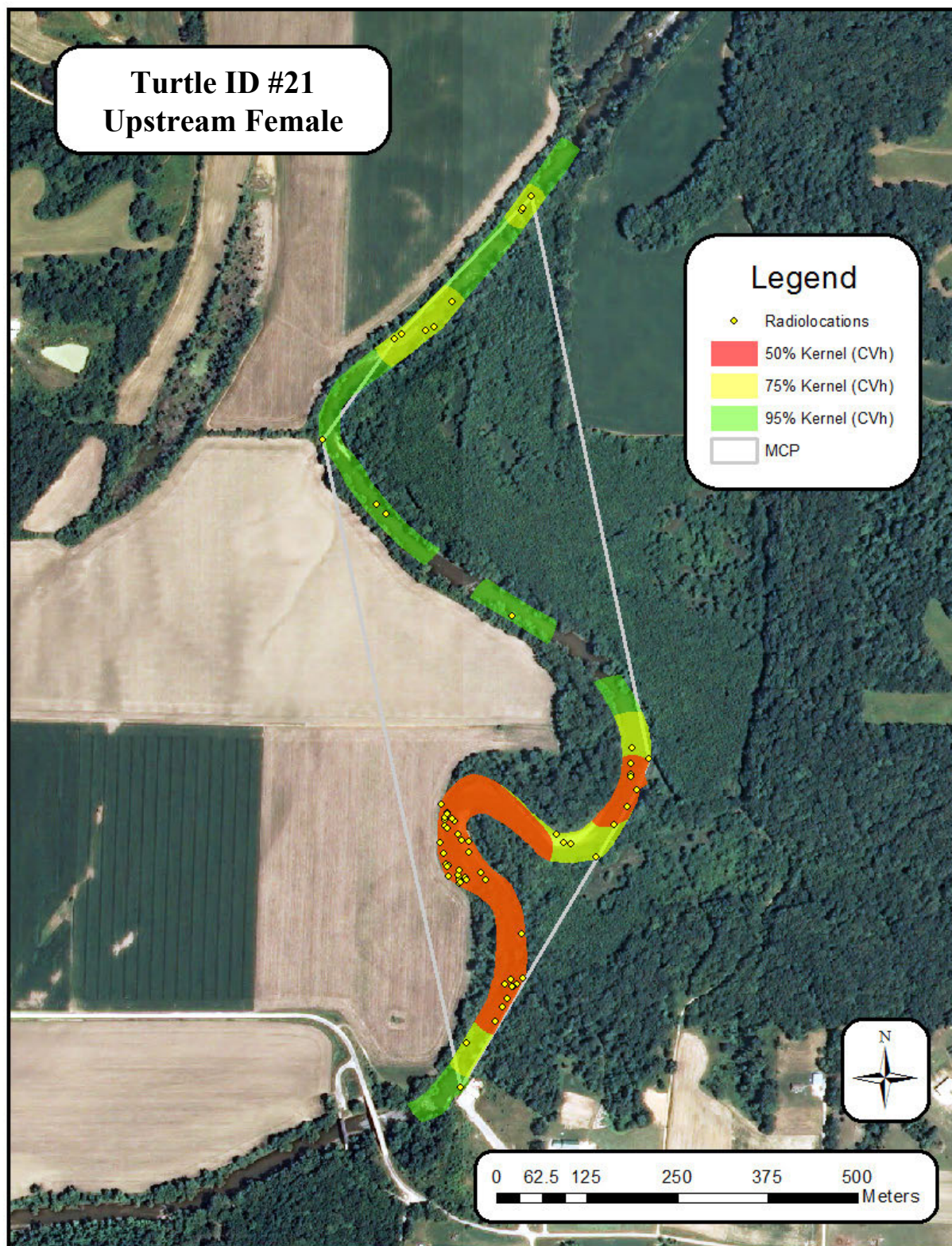


Figure S1.19: Upstream female *A. mutica* #21

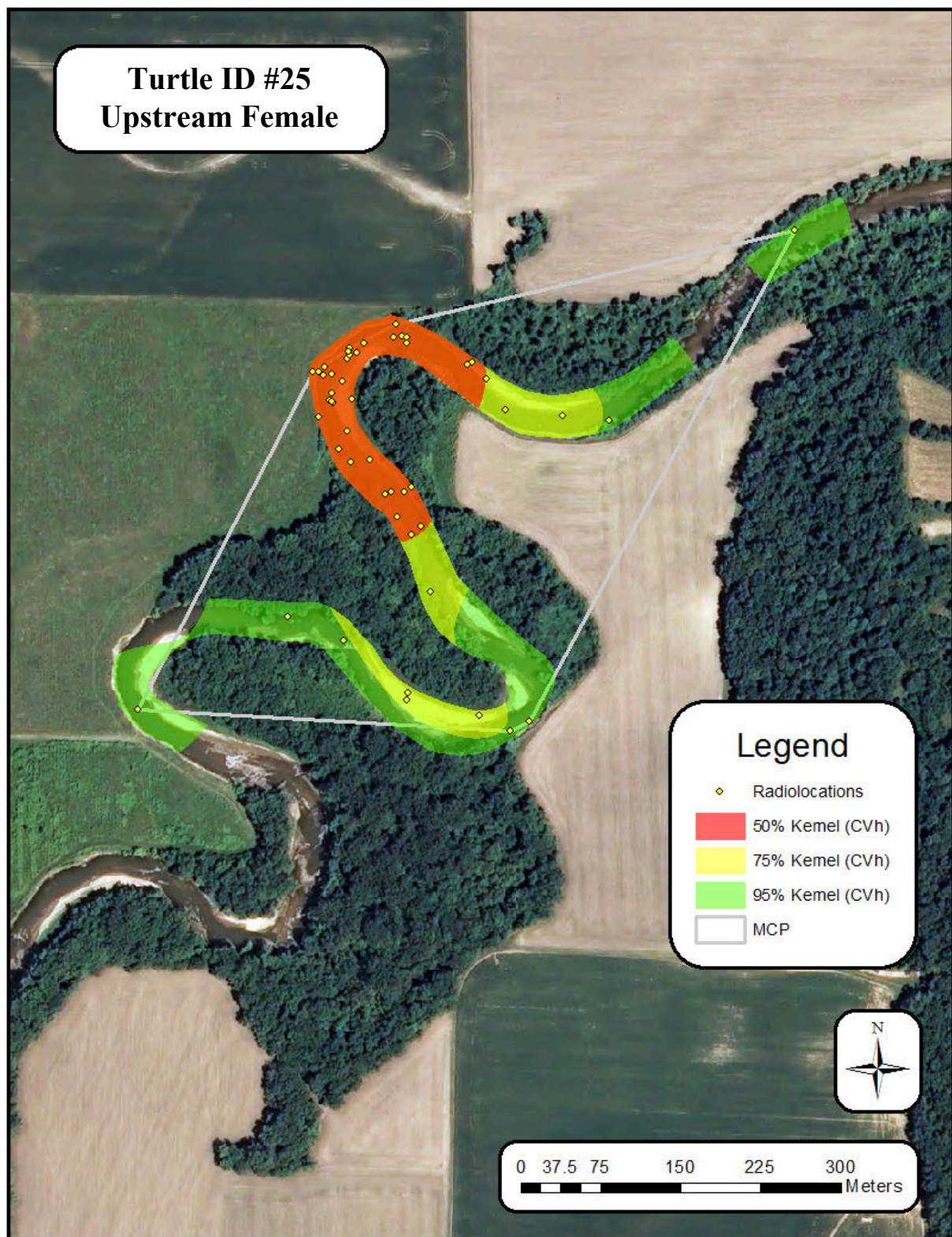


Figure S1.20: Upstream female *A. mutica* #25

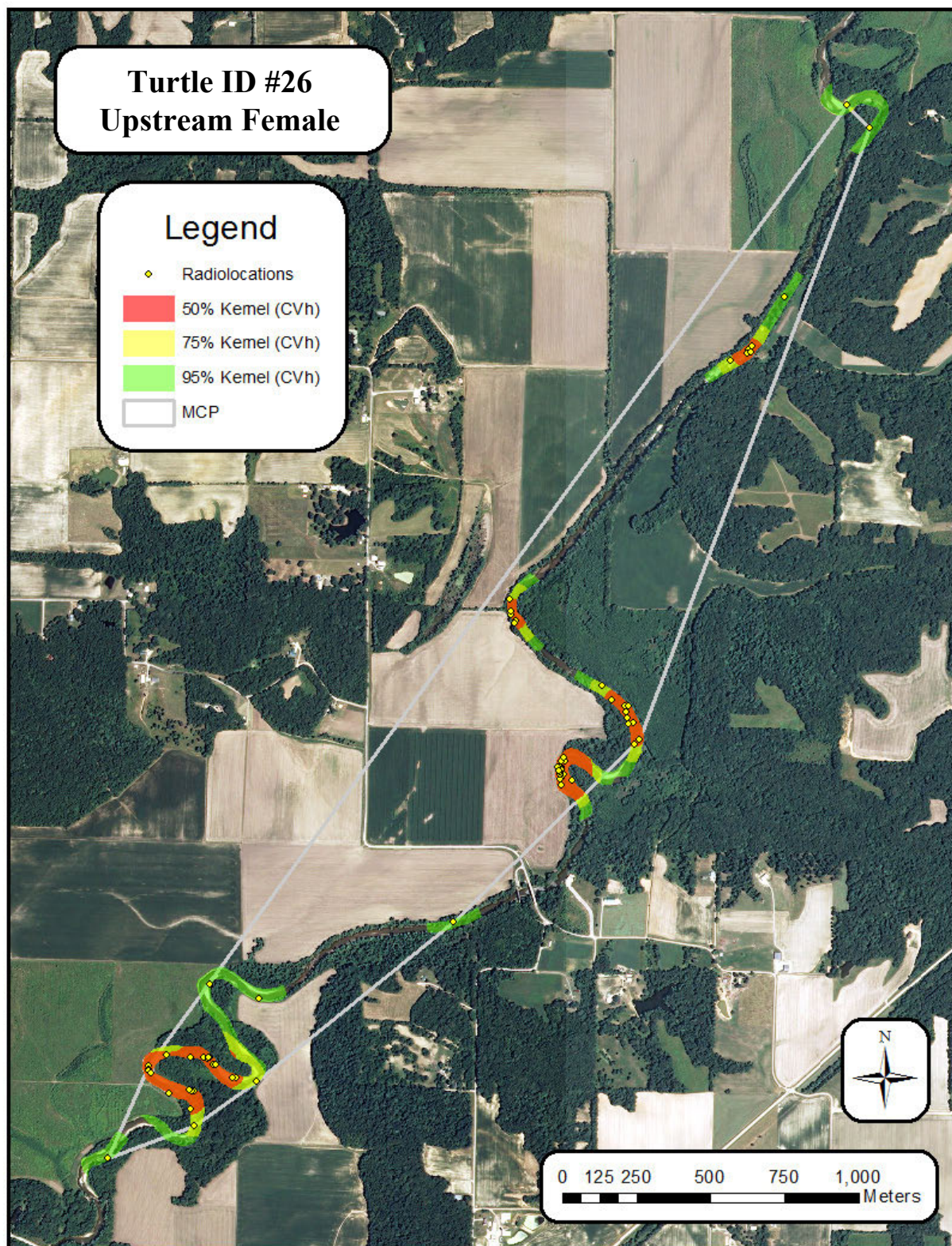


Figure S1.21: Upstream female *A. mutica* #26

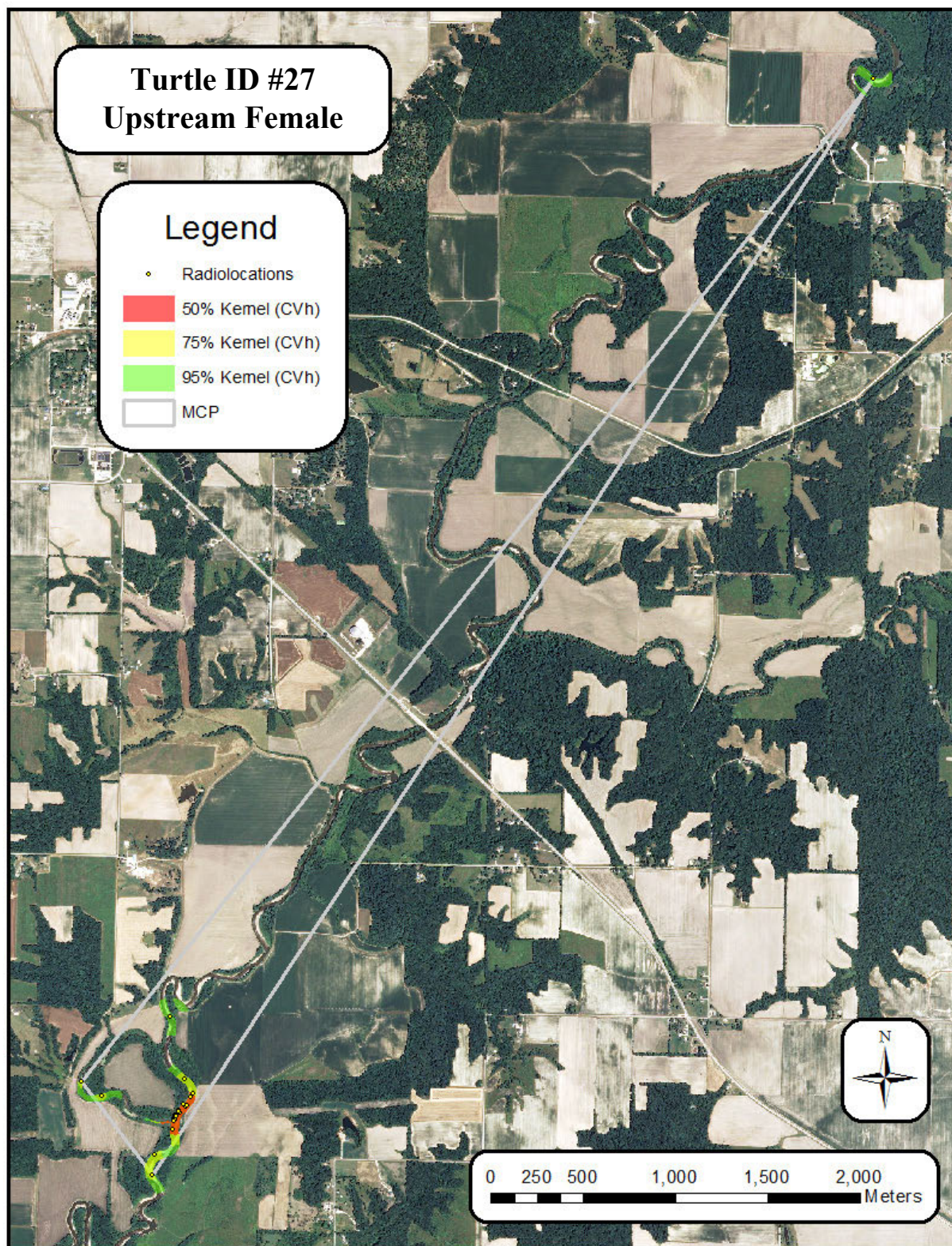


Figure S1.22: Upstream female *A. mutica* #27

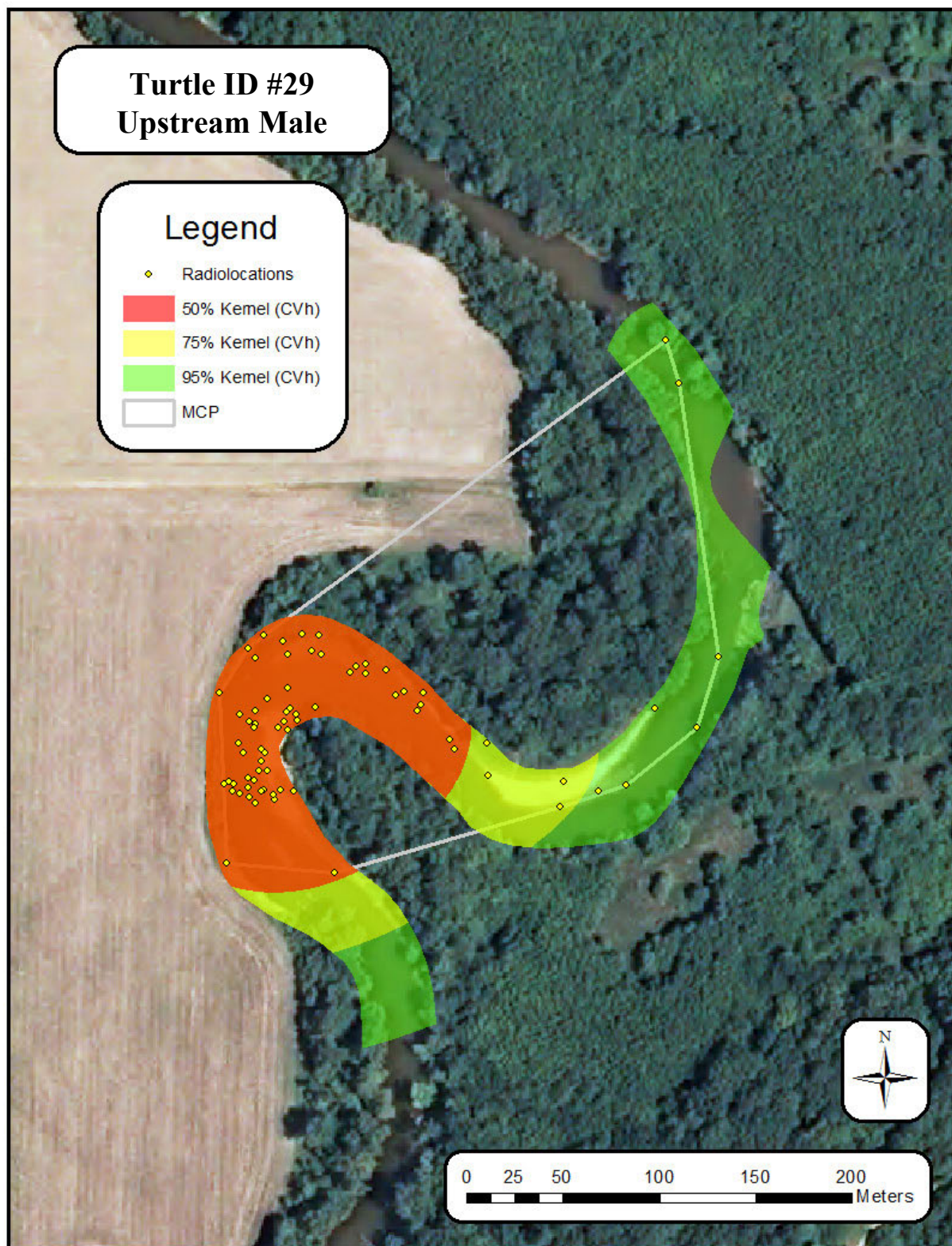


Figure S1.23: Upstream male *A. mutica* #29

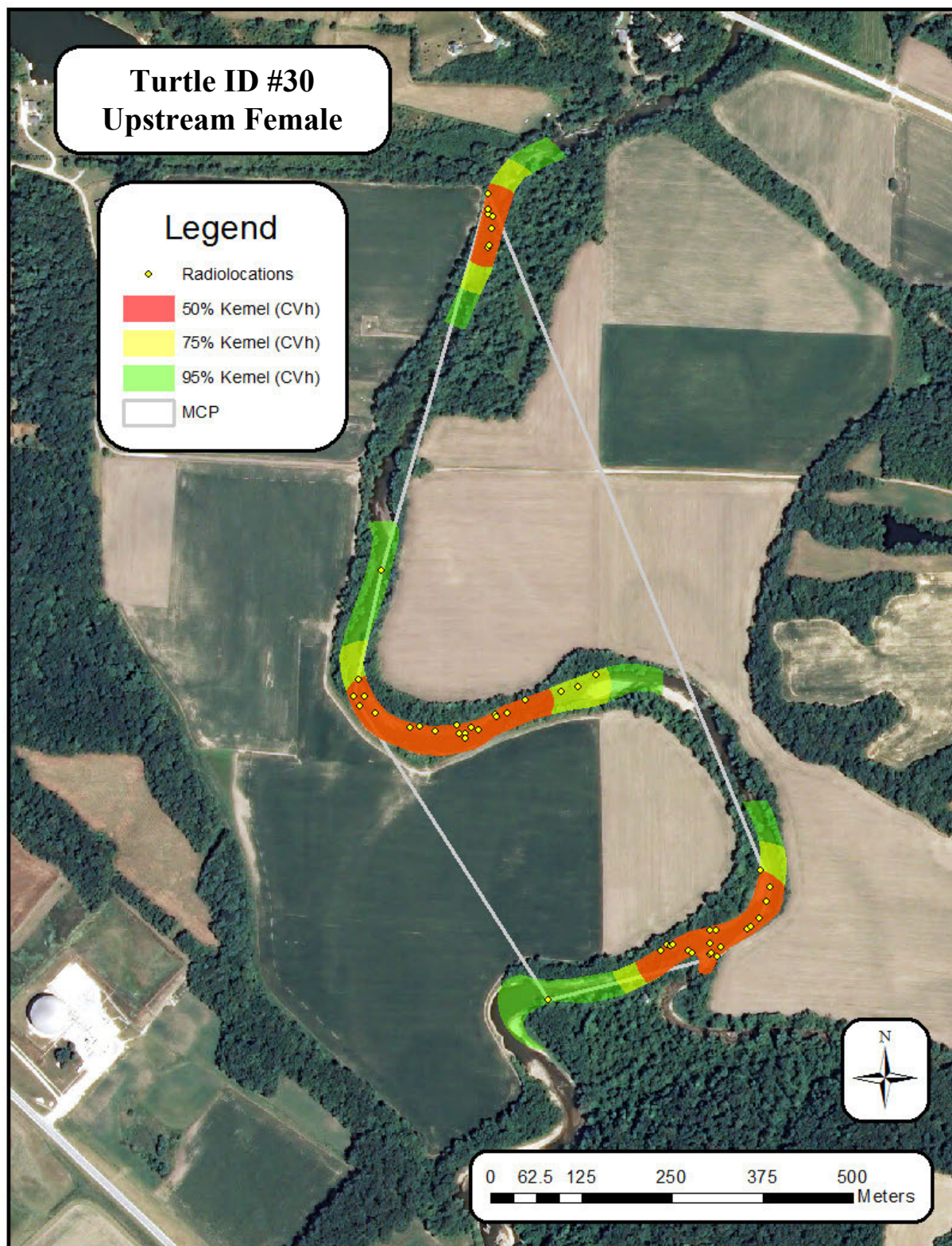


Figure S1.24: Upstream female *A. mutica* #30

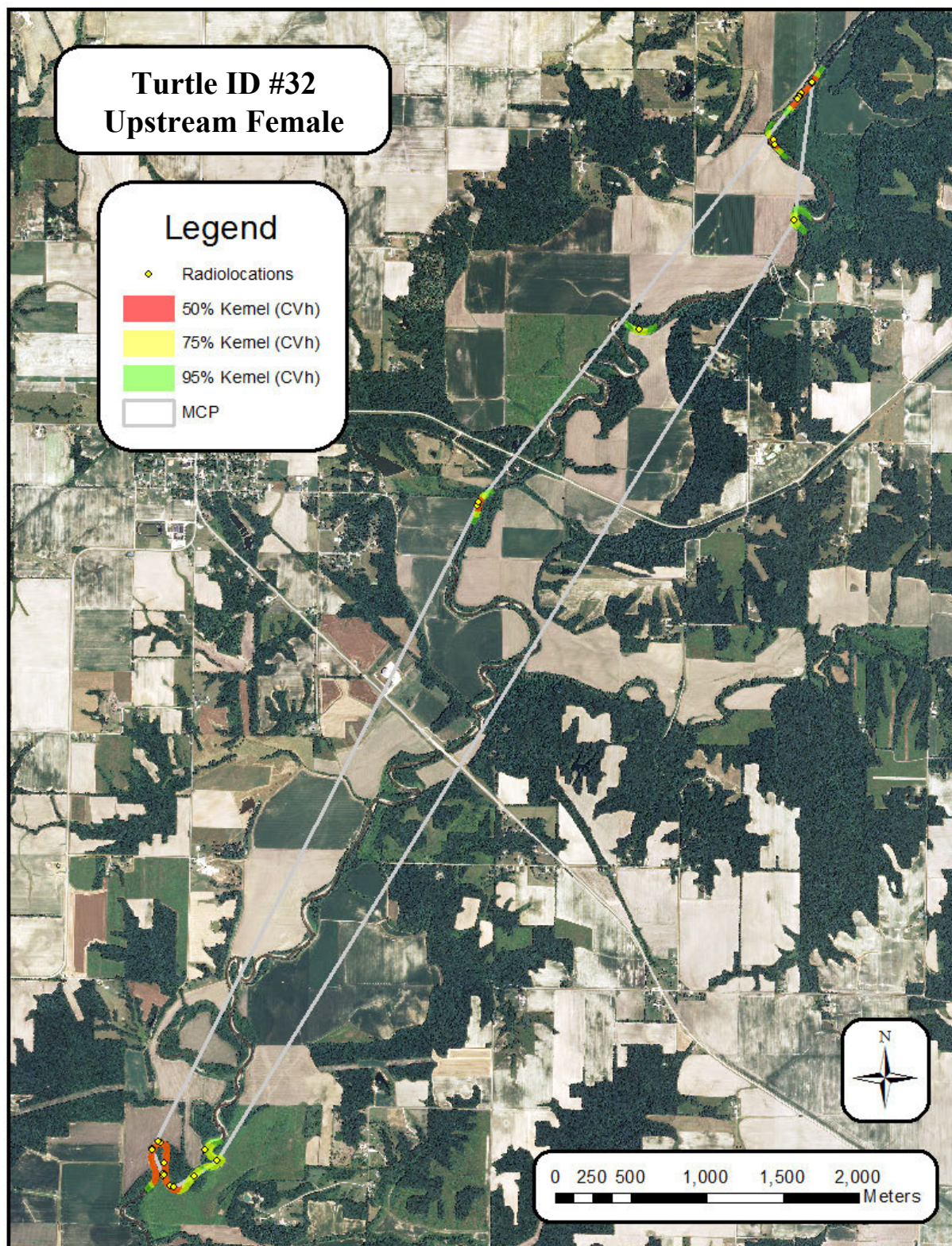


Figure S1.25: Upstream female *A. mutica* #32

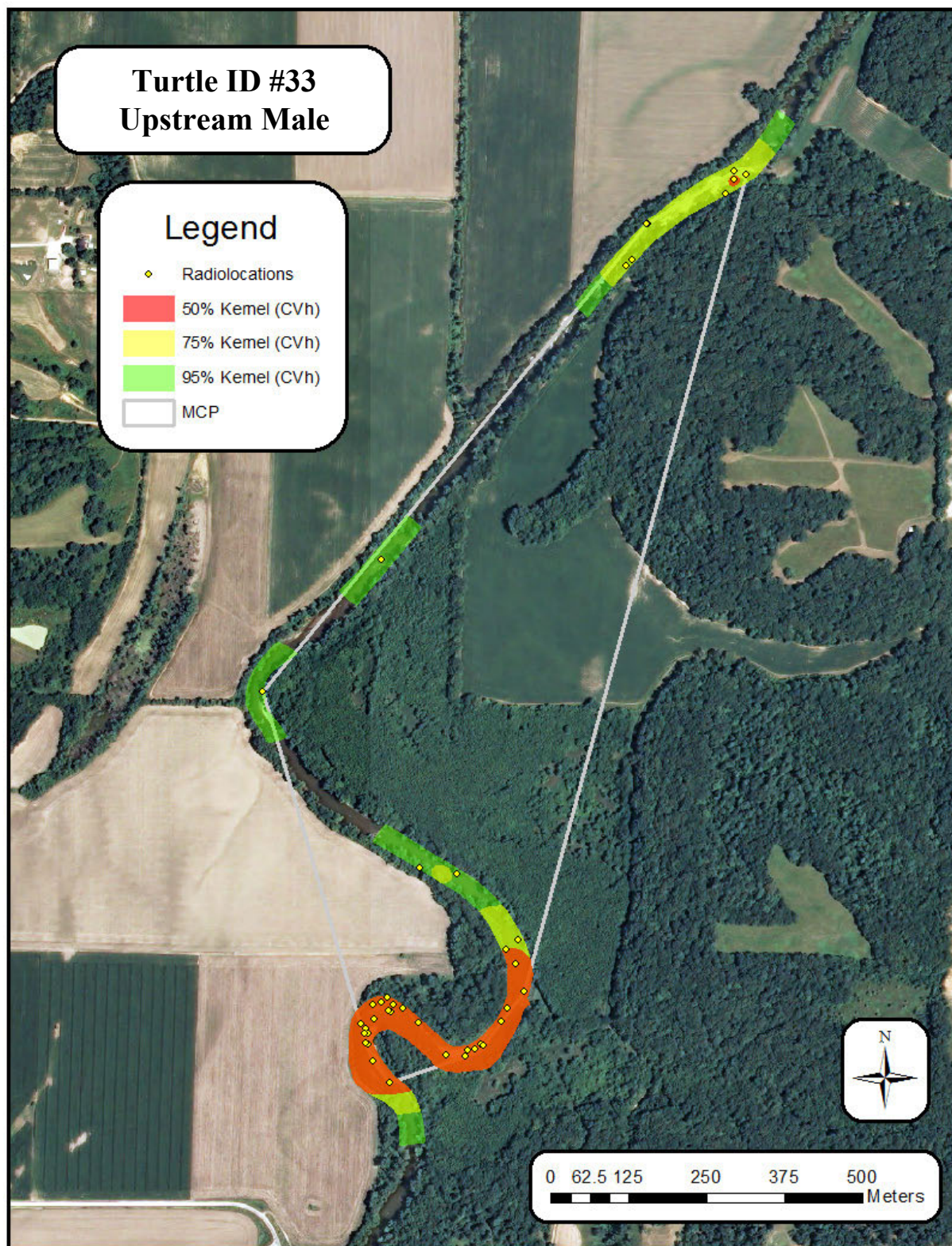


Figure S1.26: Upstream male *A. mutica* #33



Figure S1.27: Upstream female *A. mutica* #35

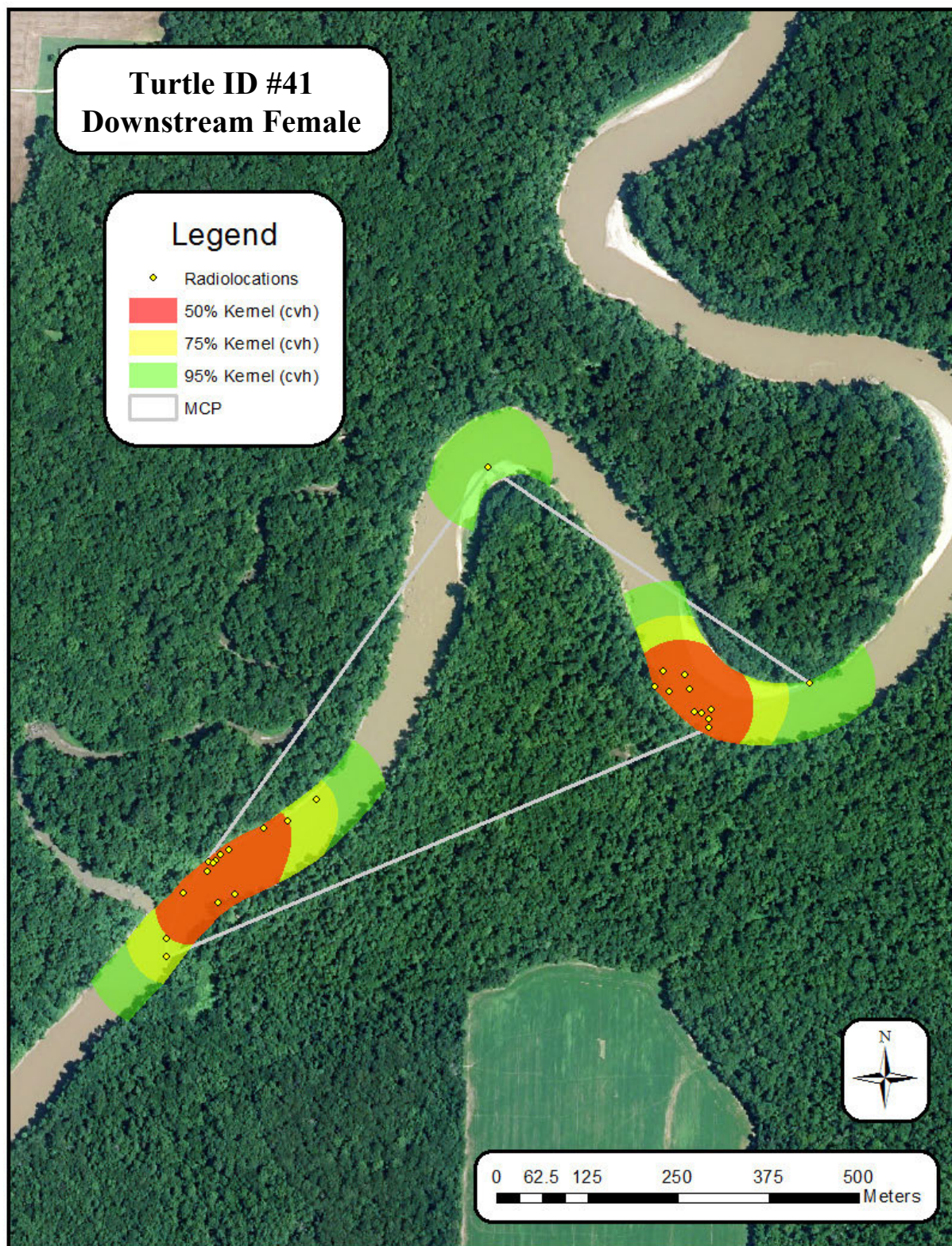


Figure S1.28: Downstream female *A. mutica* #41

Figure S2. Bootstrapped KDE home range size curves.

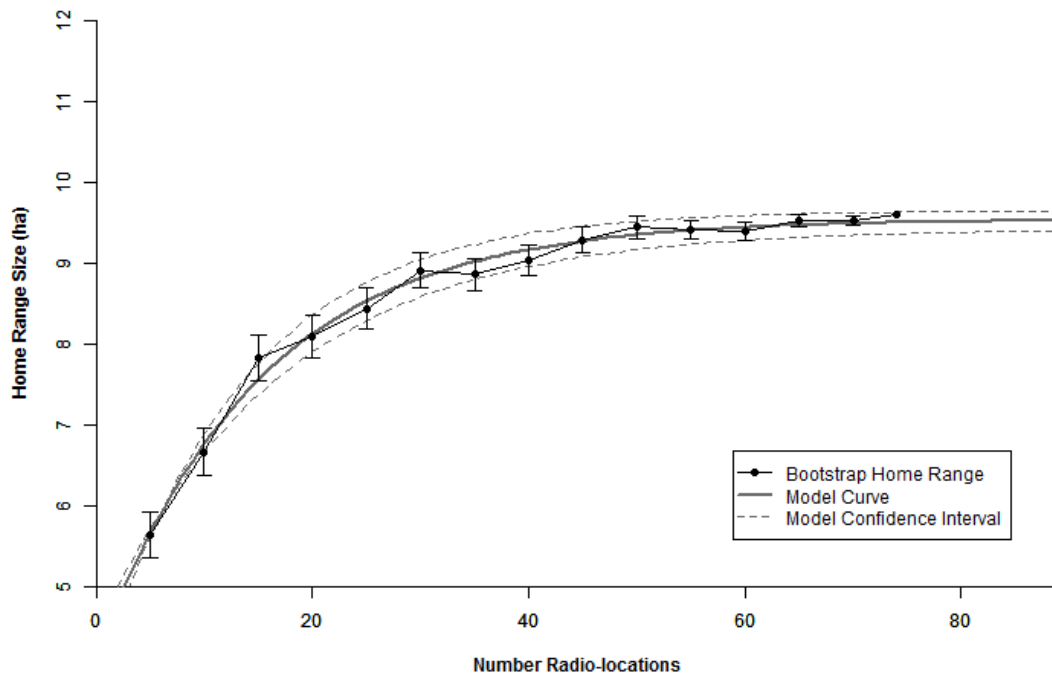


Figure S2.1: Downstream female *A. mutica* #1

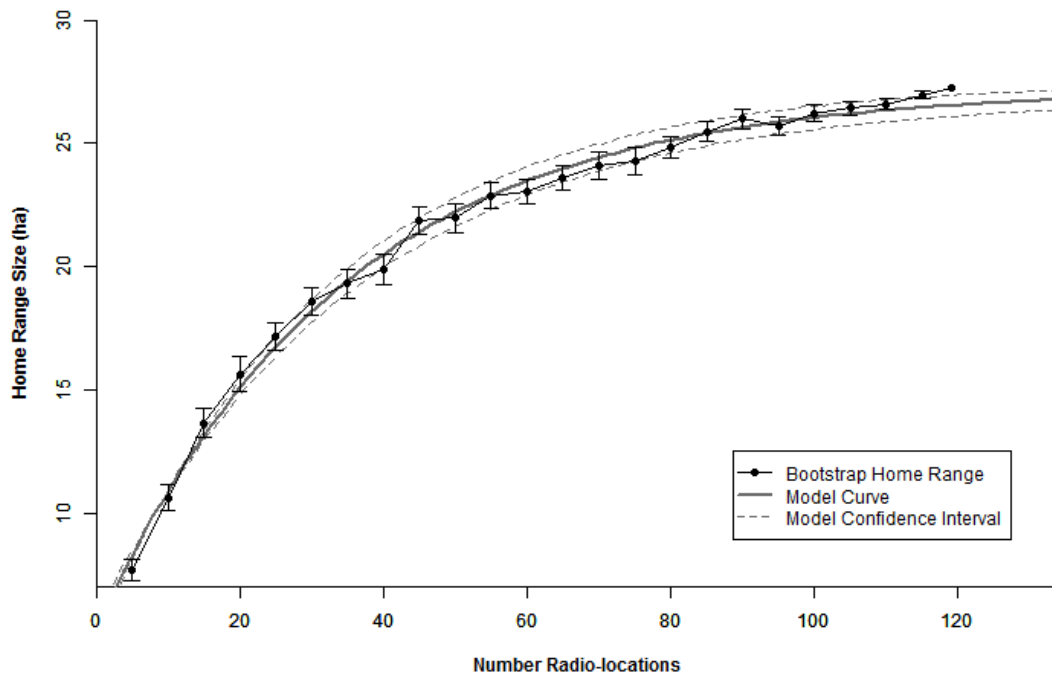


Figure S2.2: Downstream male *A. mutica* #2

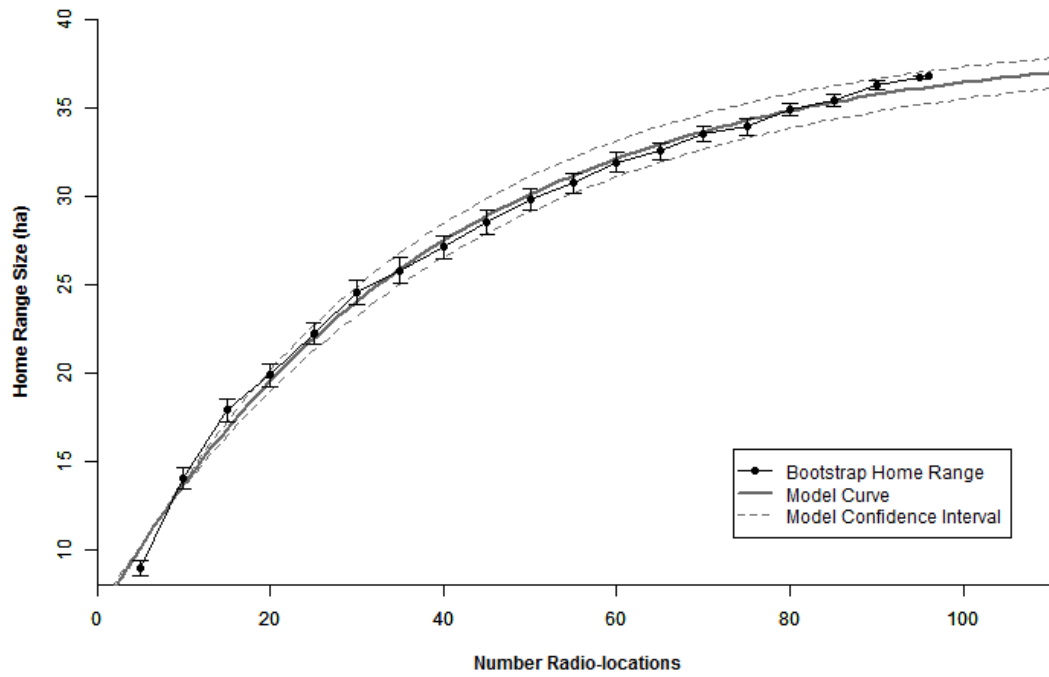


Figure S2.3: Downstream male *A. mutica* #4

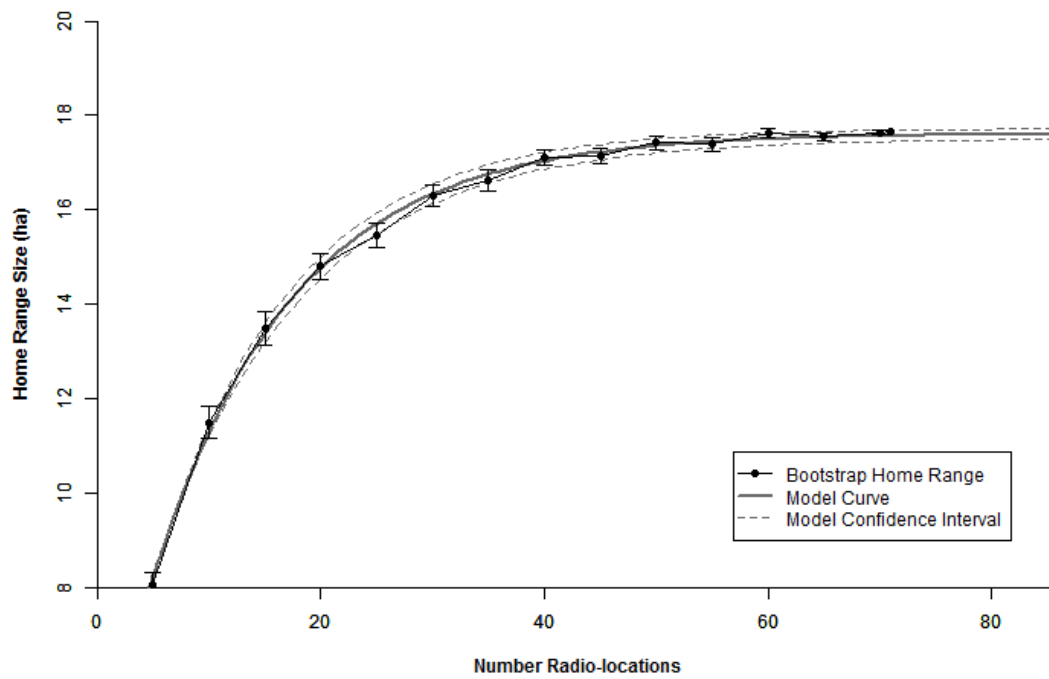


Figure S2.4: Downstream female *A. mutica* #5

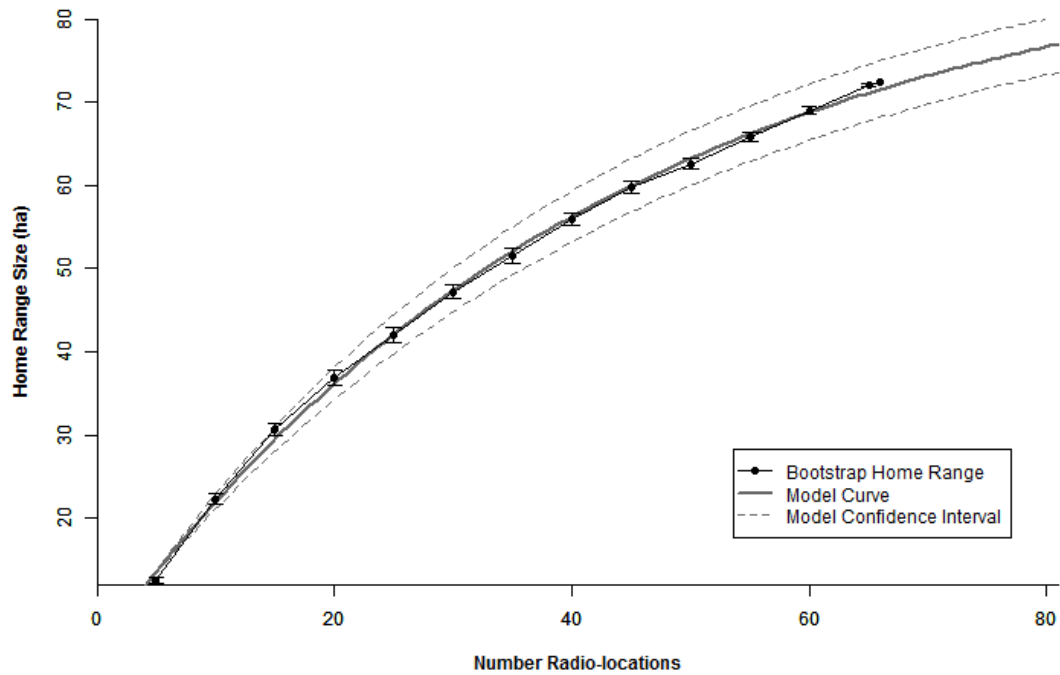


Figure S2.5: Downstream female *A. mutica* #6

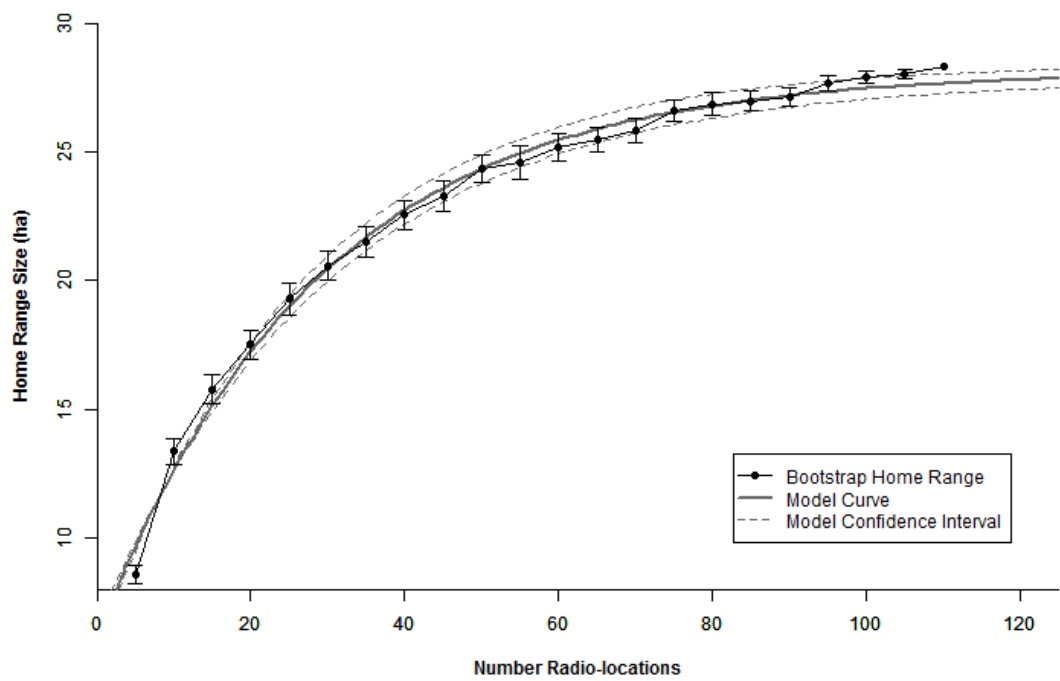


Figure S2.6: Downstream male *A. mutica* #8

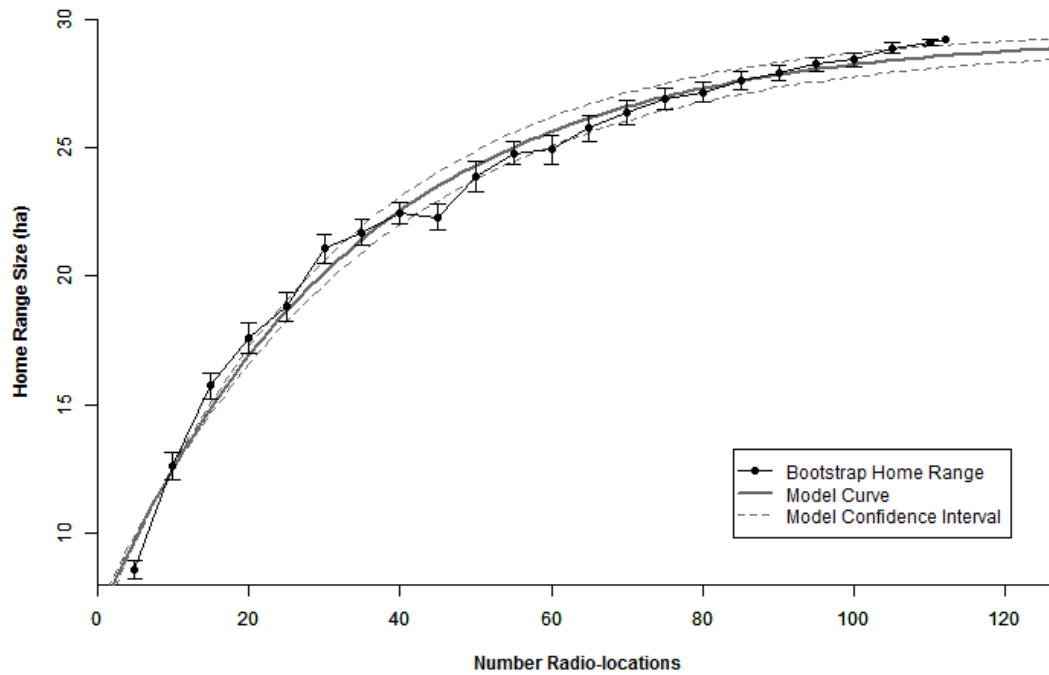


Figure S2.7: Downstream male *A. mutica* #9

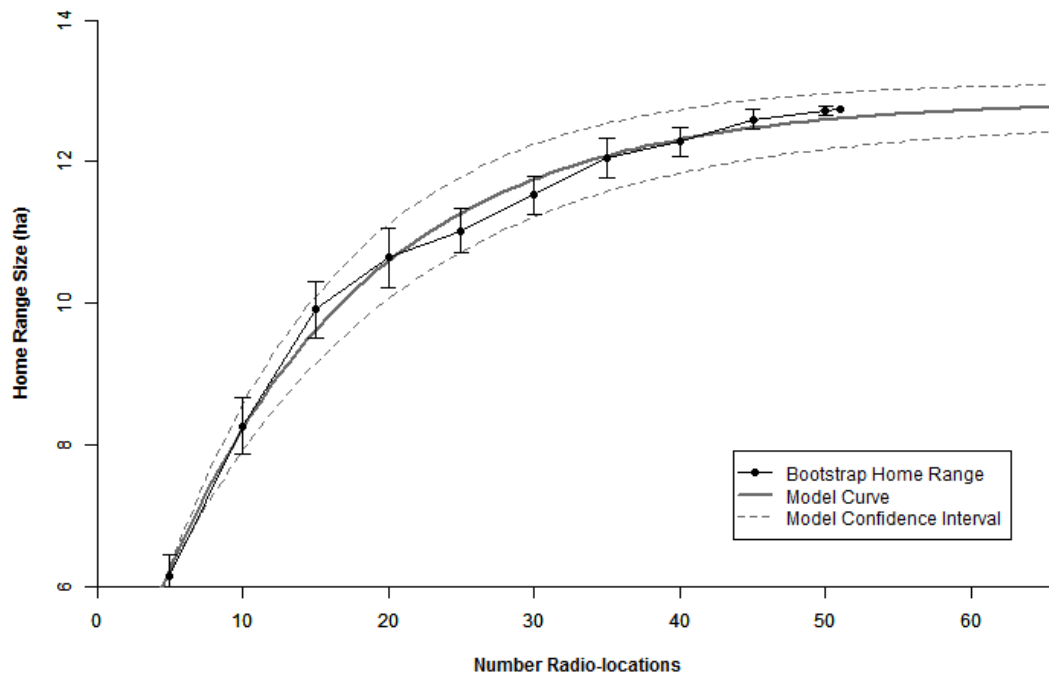


Figure S2.8: Downstream male *A. mutica* #10

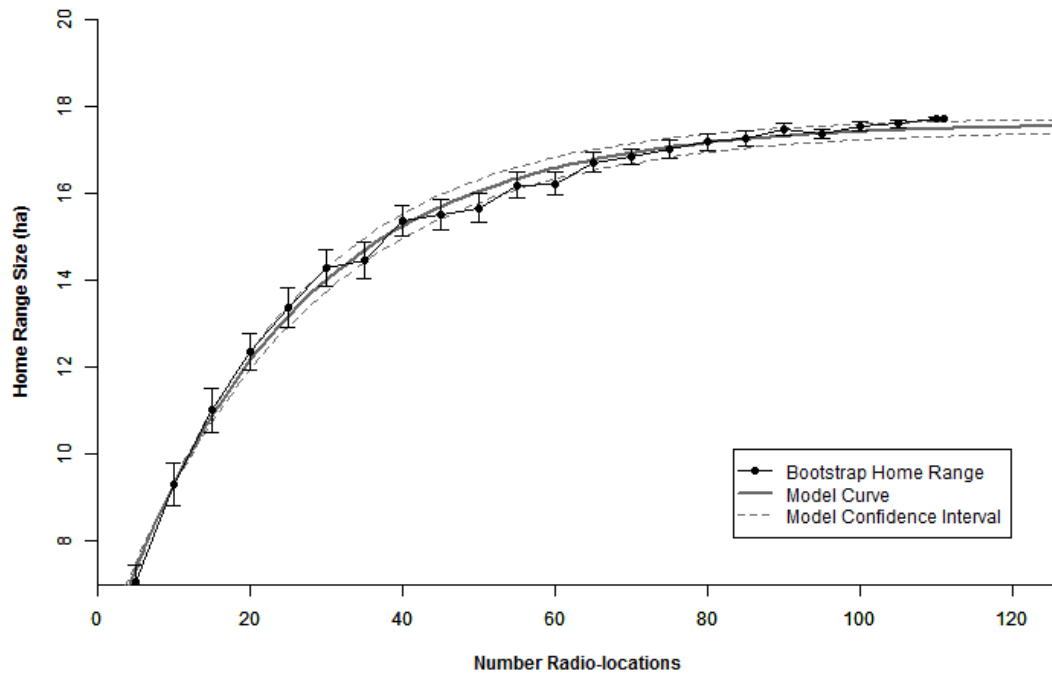


Figure S2.9: Downstream male *A. mutica* #11

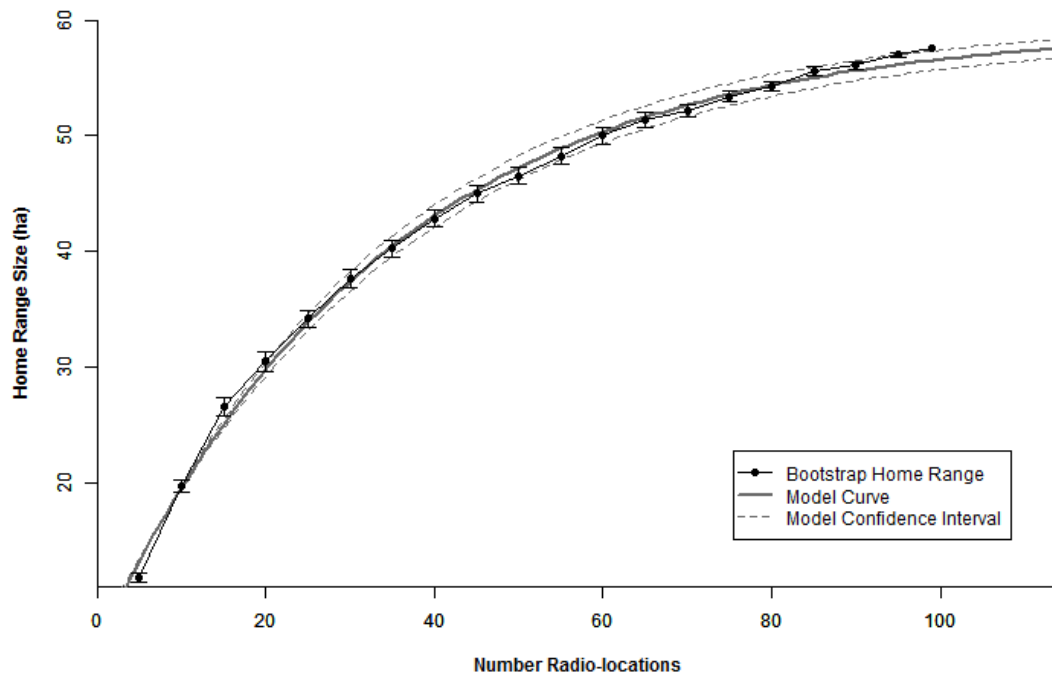


Figure S2.10: Downstream male *A. mutica* #12

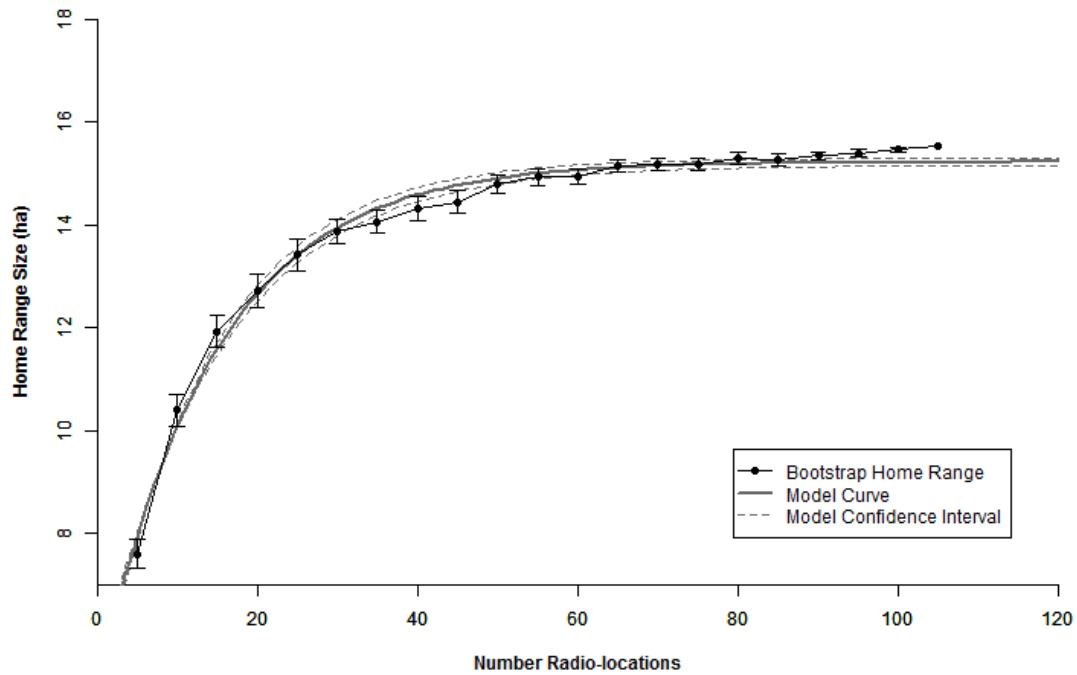


Figure S2.11: Downstream female *A. mutica* #13

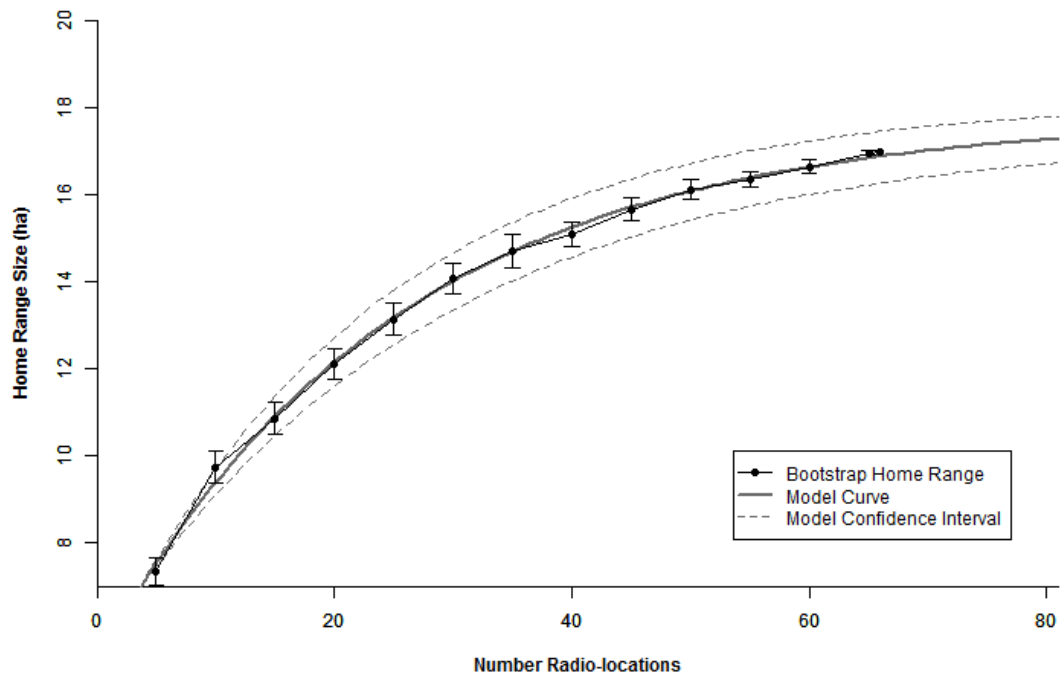


Figure S2.12: Downstream female *A. mutica* #14

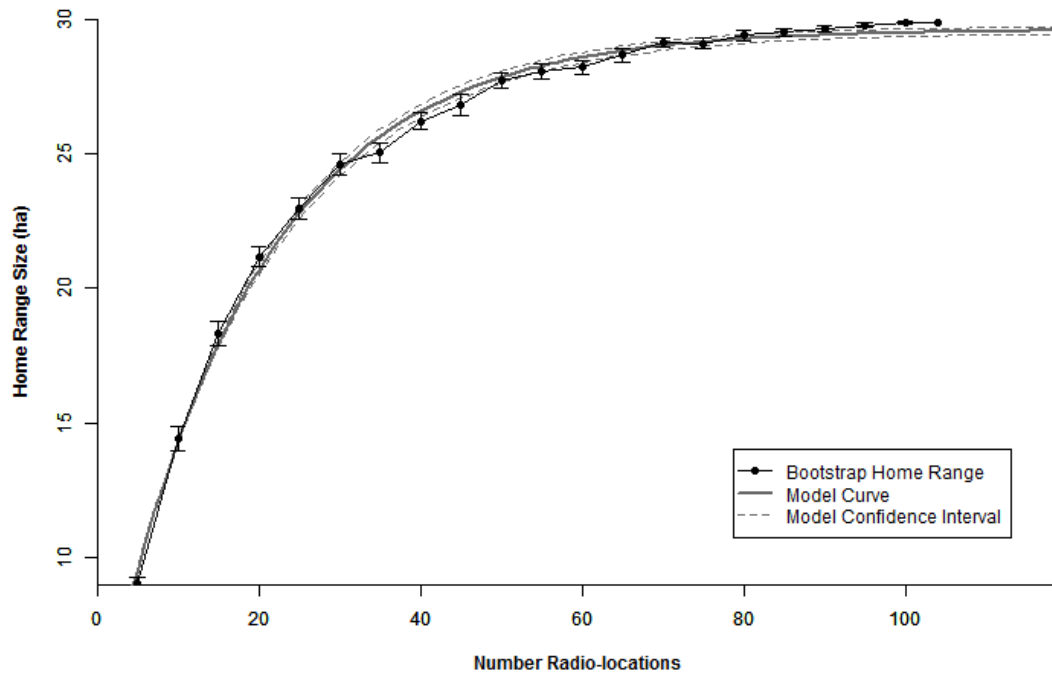


Figure S2.13: Downstream female *A. mutica* #15

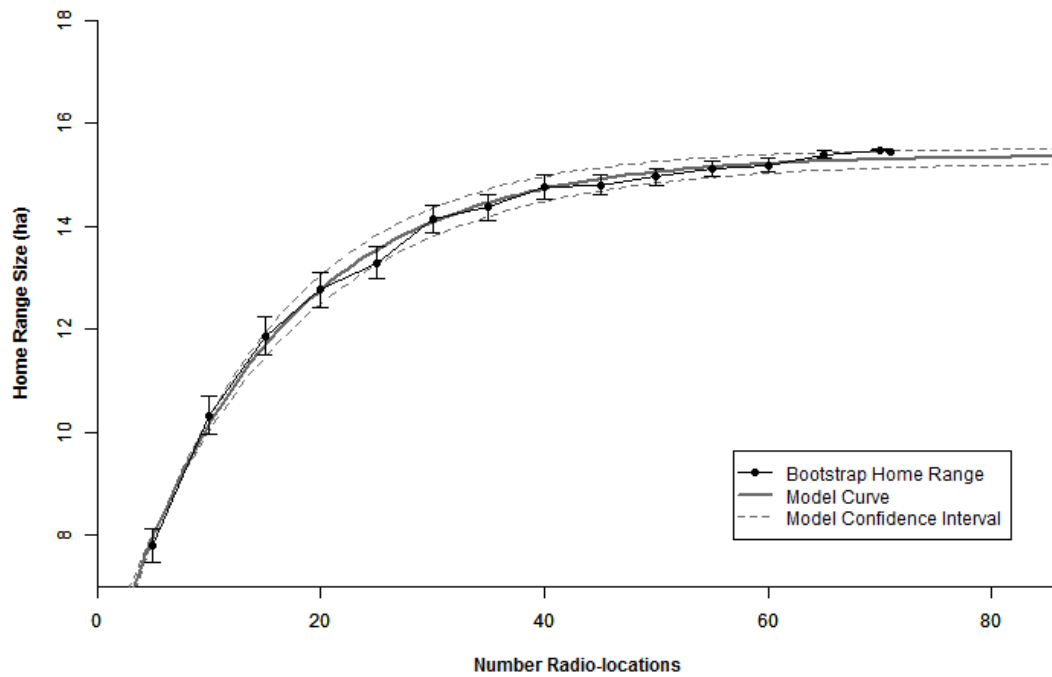


Figure S2.14: Downstream female *A. mutica* #16

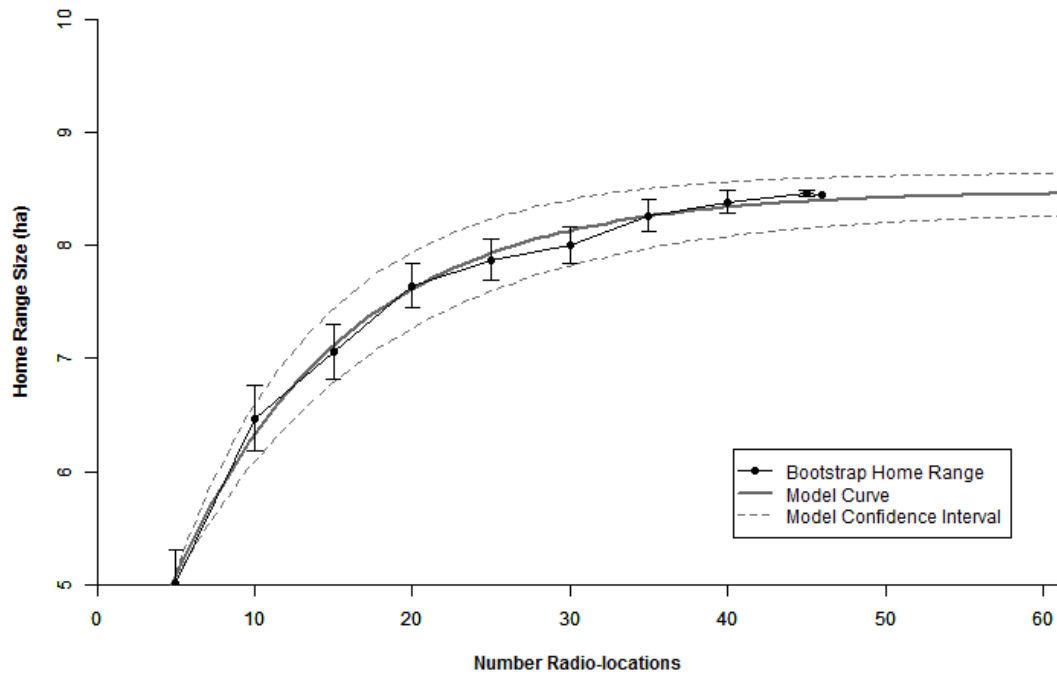


Figure S2.15: Downstream male *A. mutica* #17

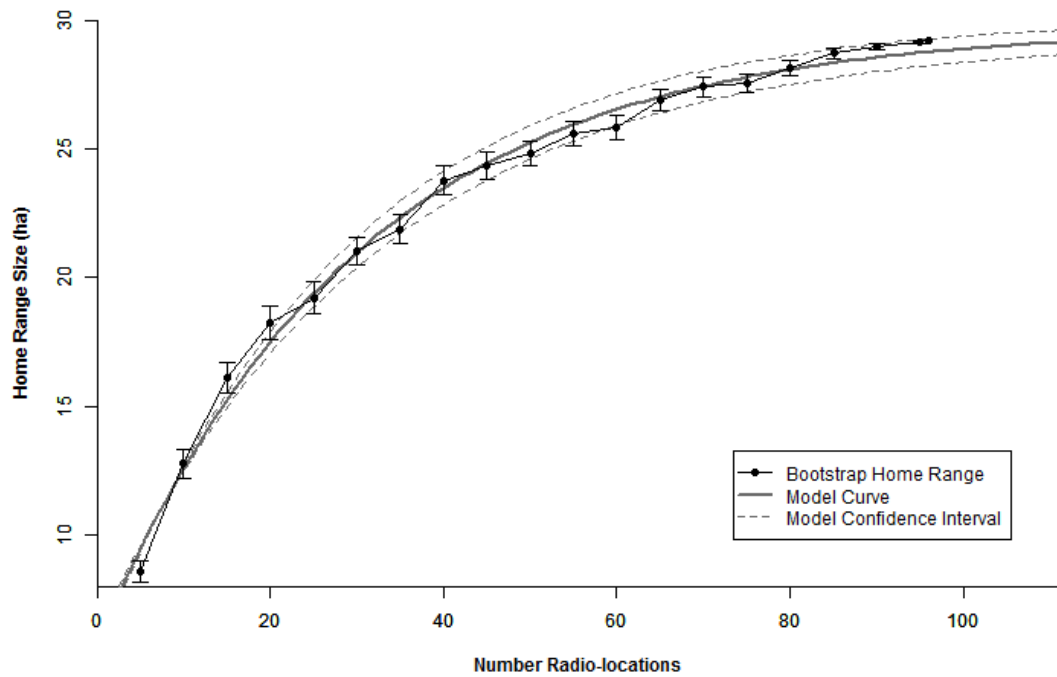


Figure S2.16: Downstream male *A. mutica* #18

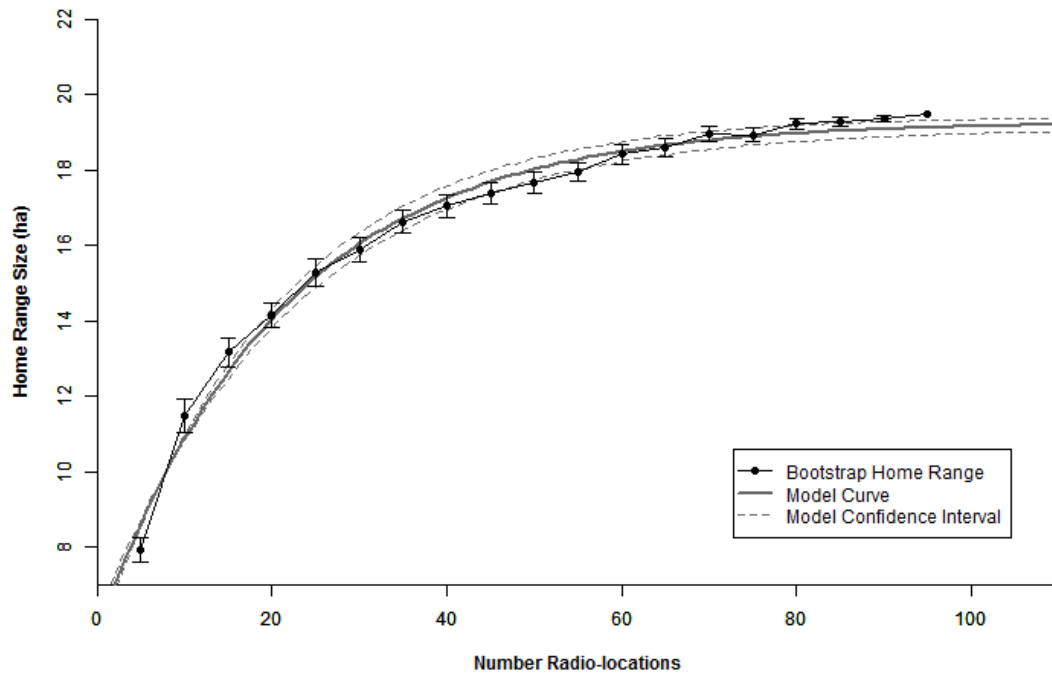


Figure S2.17: Downstream male *A. mutica* #19

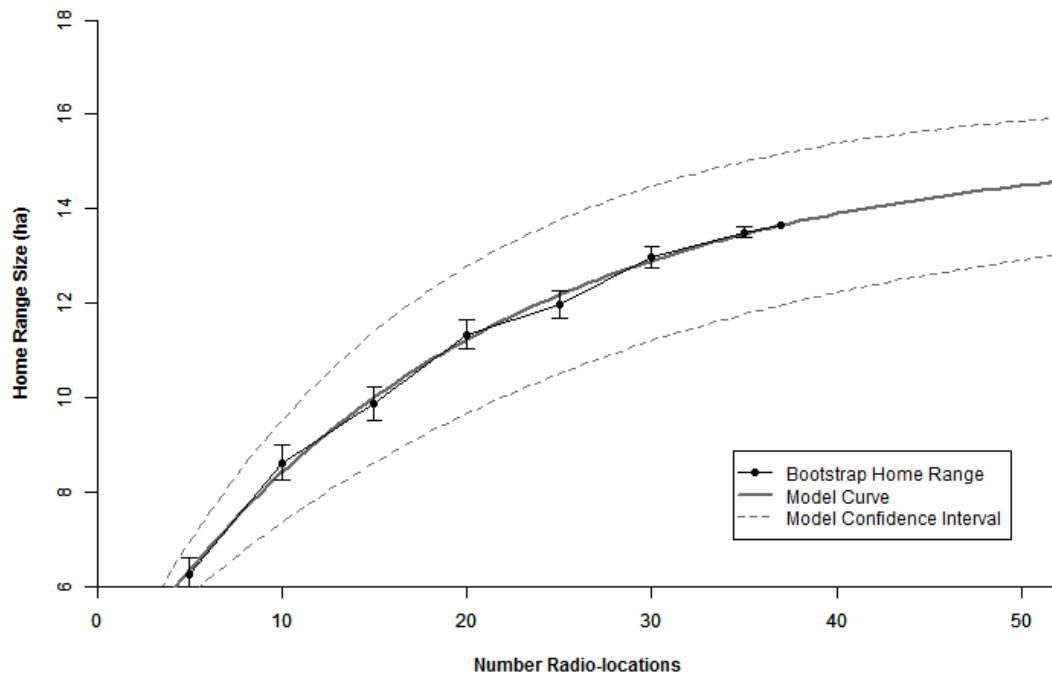


Figure S2.18: Downstream male *A. mutica* #20

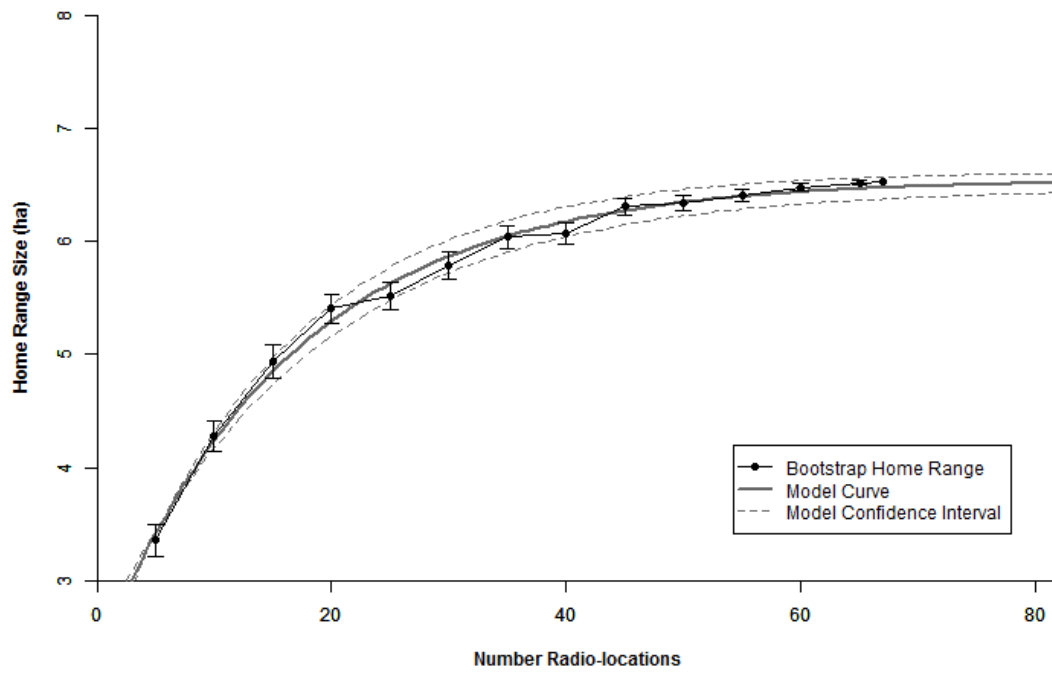


Figure S2.19: Upstream female *A. mutica* #21

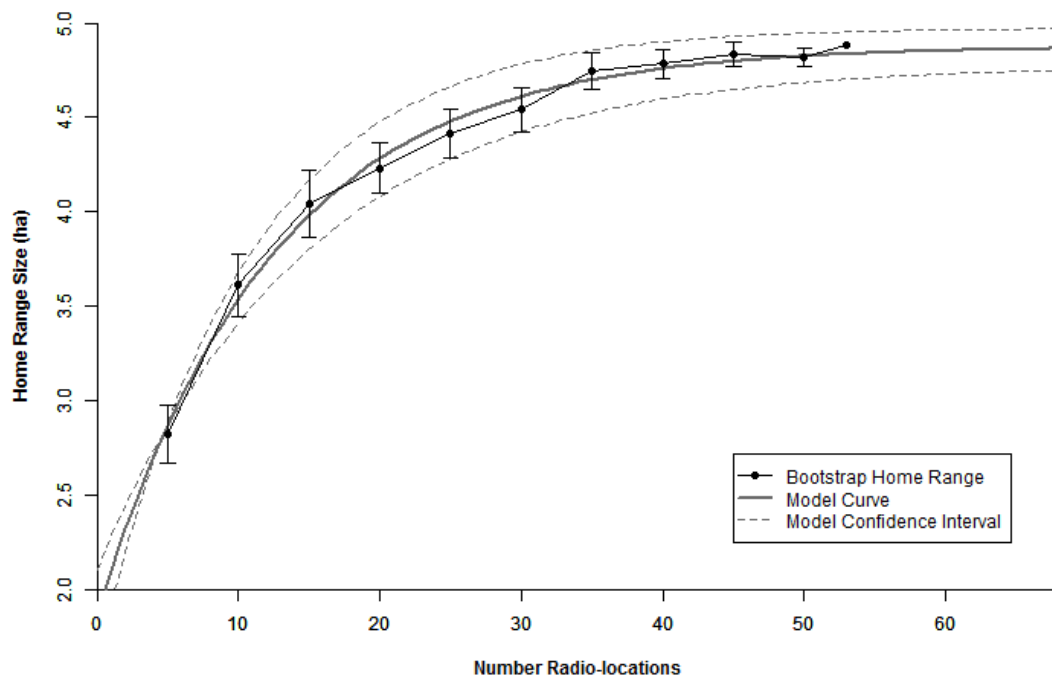


Figure S2.20: Upstream female *A. mutica* #25

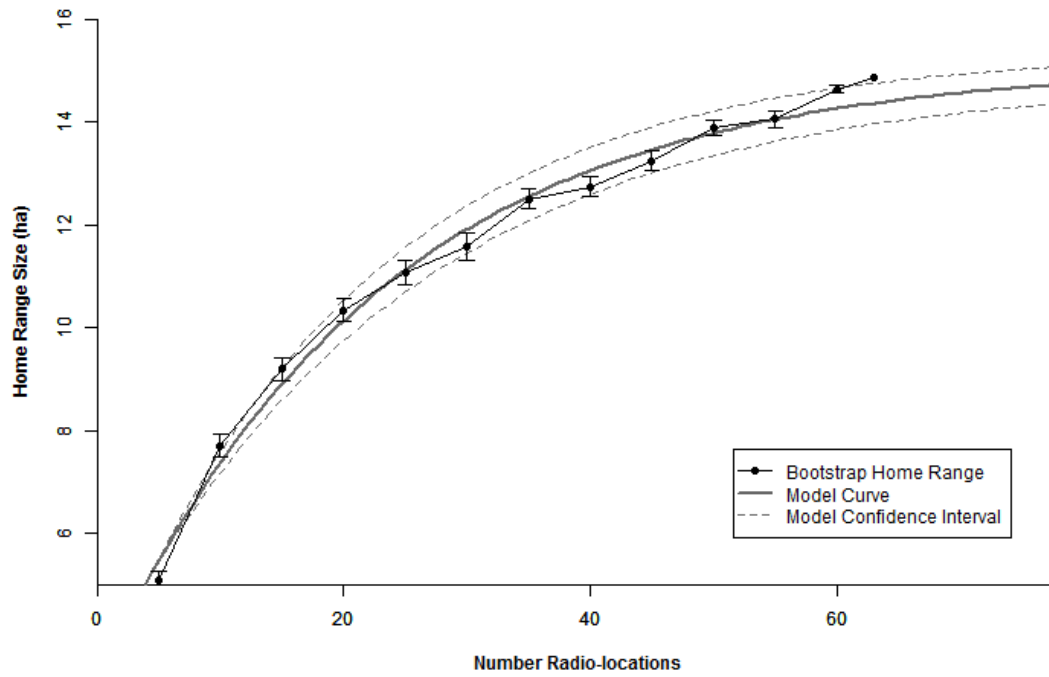


Figure S2.21: Upstream female *A. mutica* #26

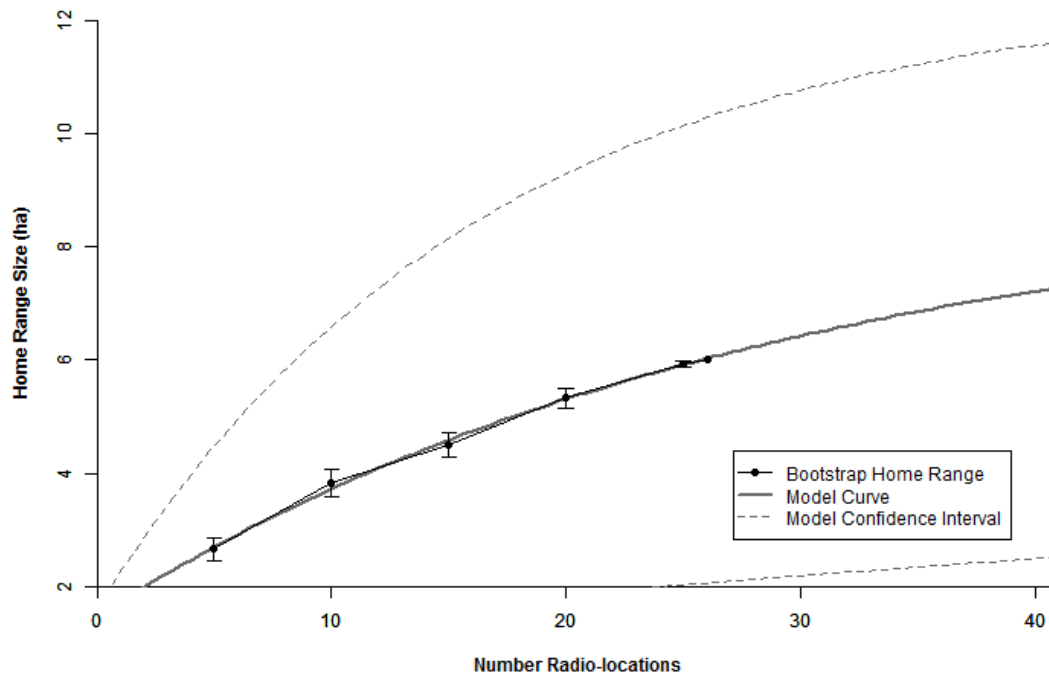


Figure S2.22: Upstream female *A. mutica* #27

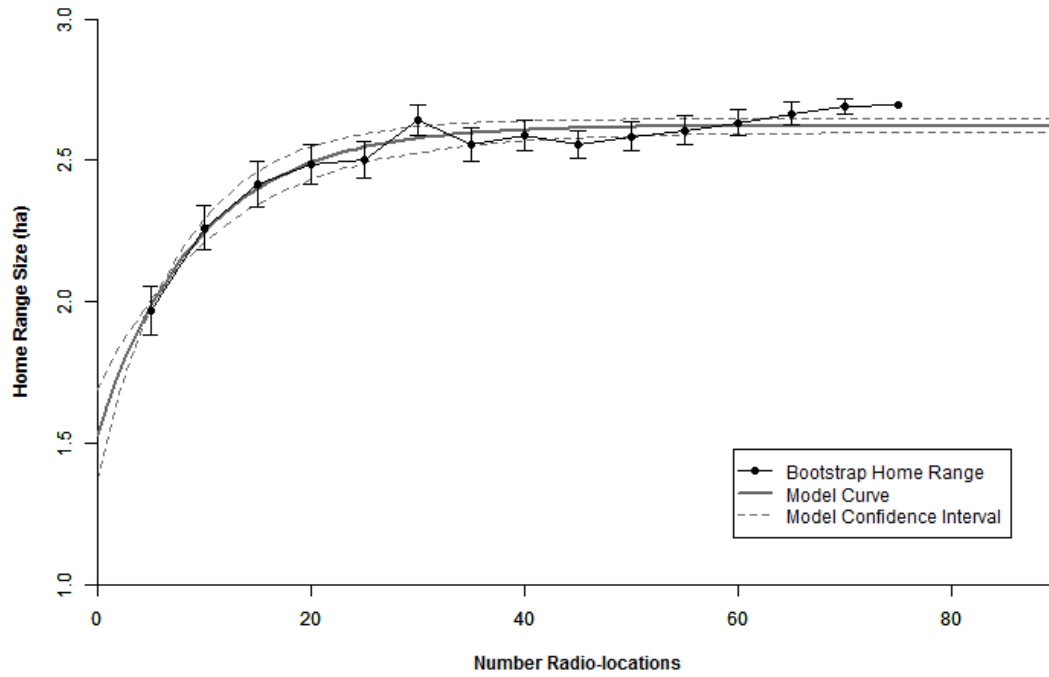


Figure S2.23: Upstream male *A. mutica* #29

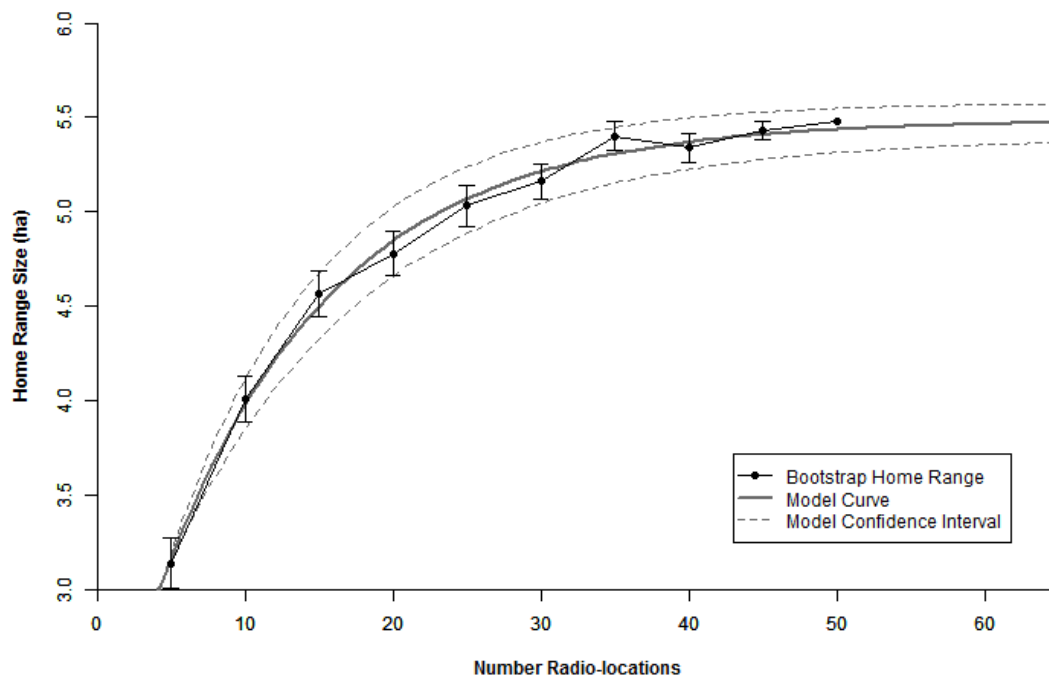


Figure S2.24: Upstream female *A. mutica* #30

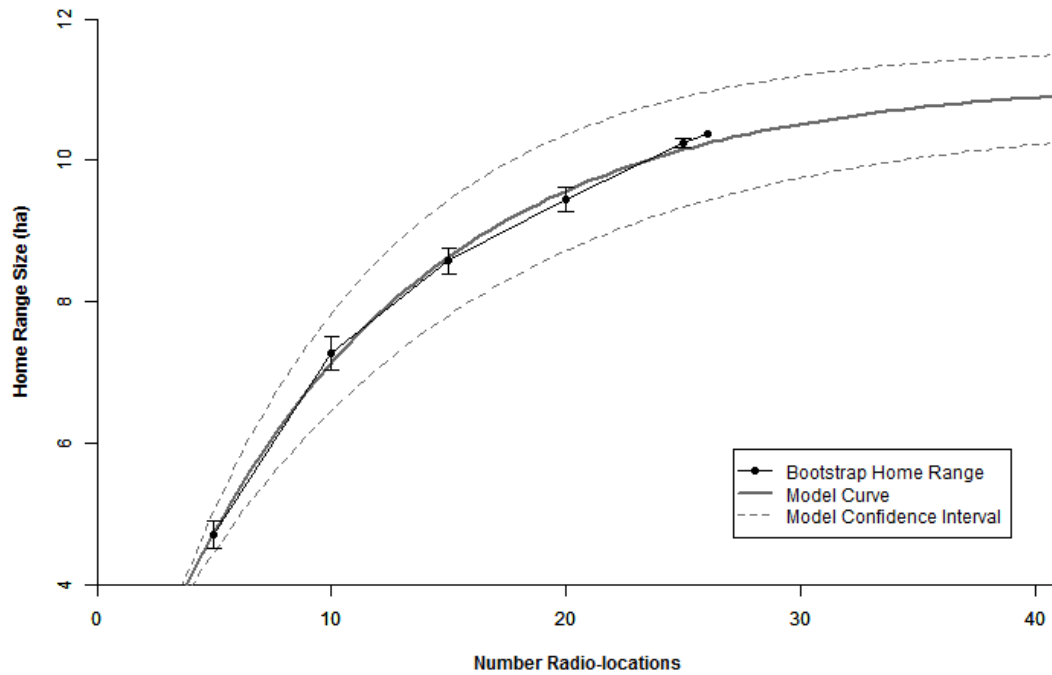


Figure S2.25: Upstream female *A. mutica* #32

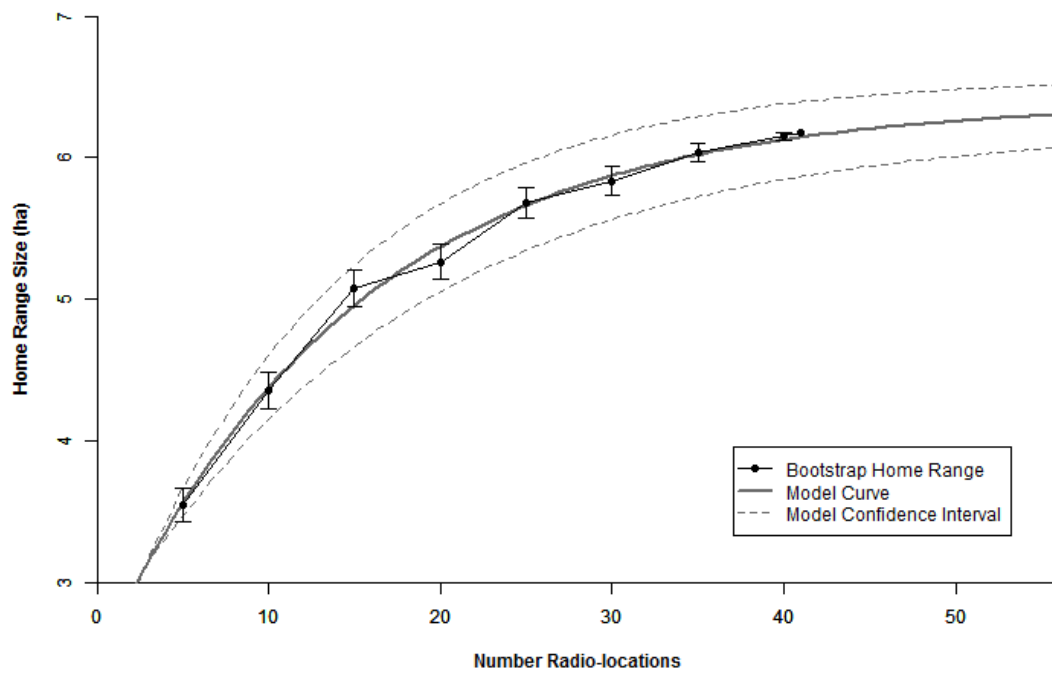


Figure S2.26: Upstream male *A. mutica* #33

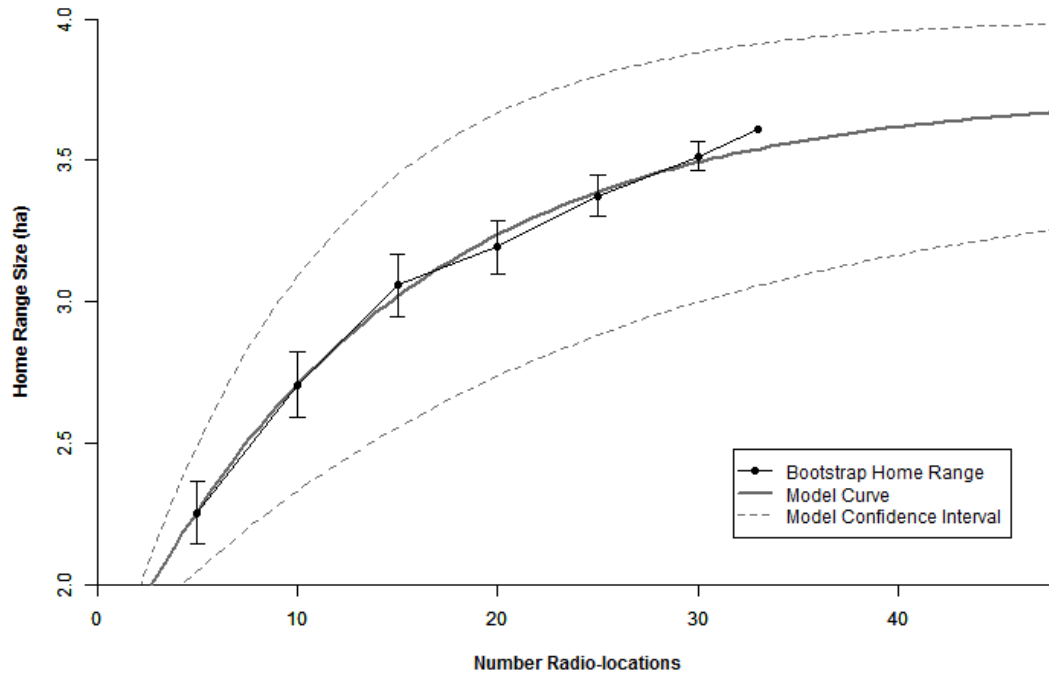


Figure S2.27: Upstream female *A. mutica* #35

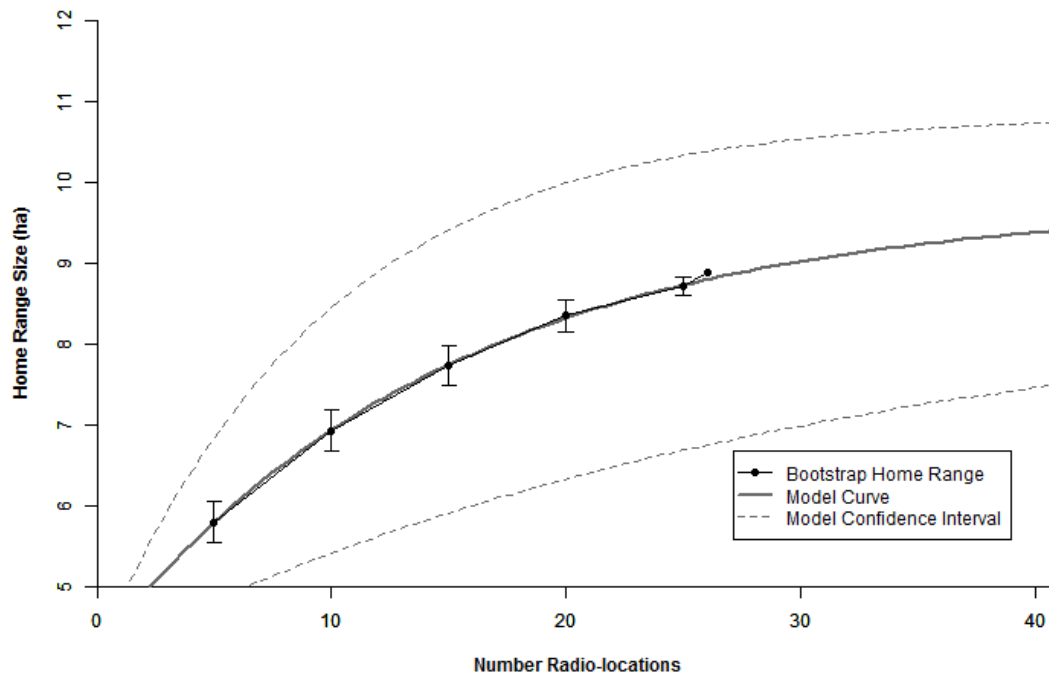


Figure S2.28: Downstream female *A. mutica* #41