

## Supplementary Material

### Contents

Figure S1: 500 MHz  $^1\text{H}$  NMR spectrum of **1** ( $\text{CDCl}_3$ )

Figure S2: 125 MHz DEPTQ  $^{13}\text{C}$  NMR spectrum of **1** ( $\text{CDCl}_3$ )

Figure S1: 400 MHz  $^1\text{H}$  NMR spectrum of **1** ( $\text{CDCl}_3$ )

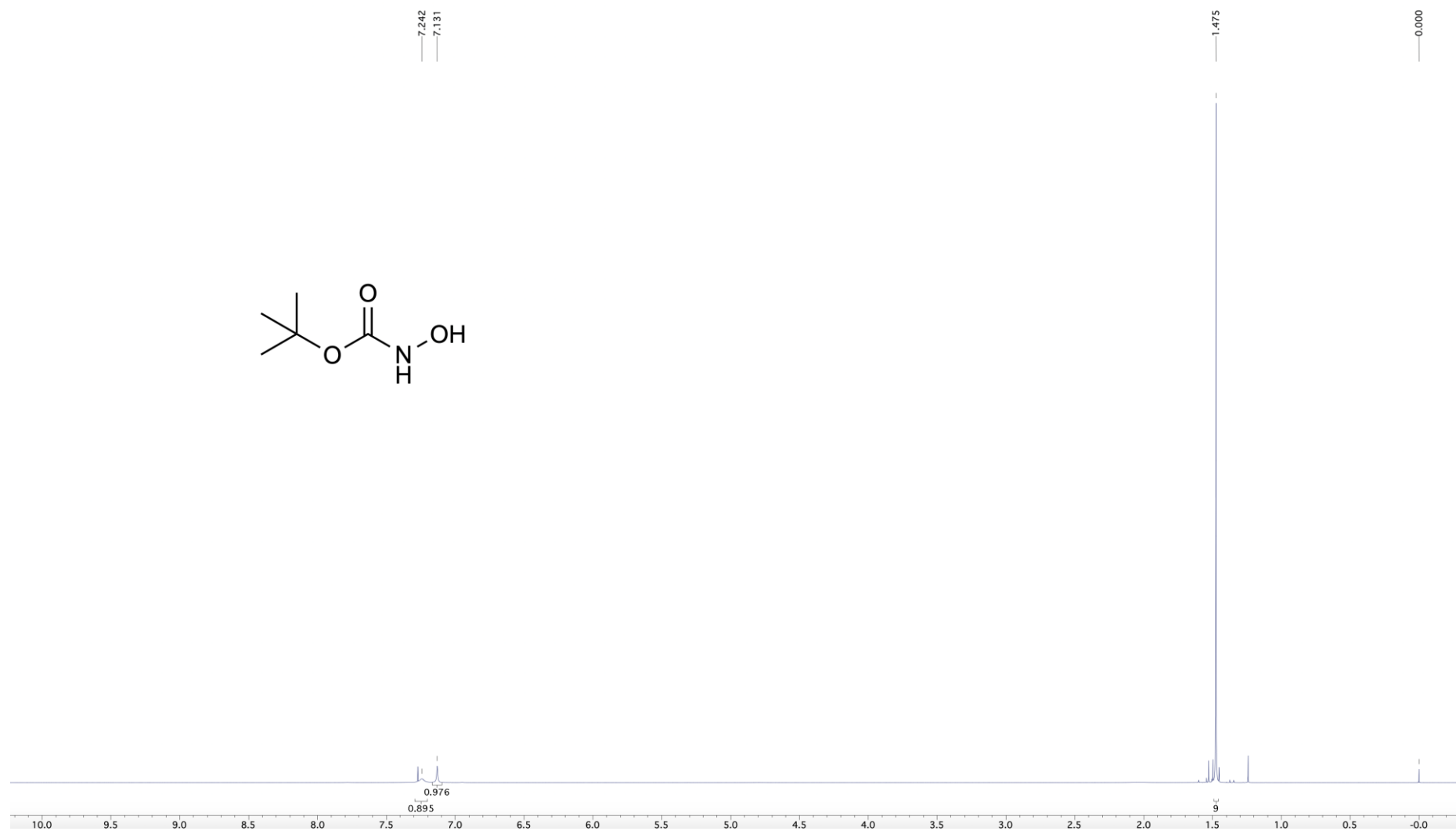


Figure S2: 125 MHz DEPTQ  $^{13}\text{C}$  NMR spectrum of **1** ( $\text{CDCl}_3$ )

