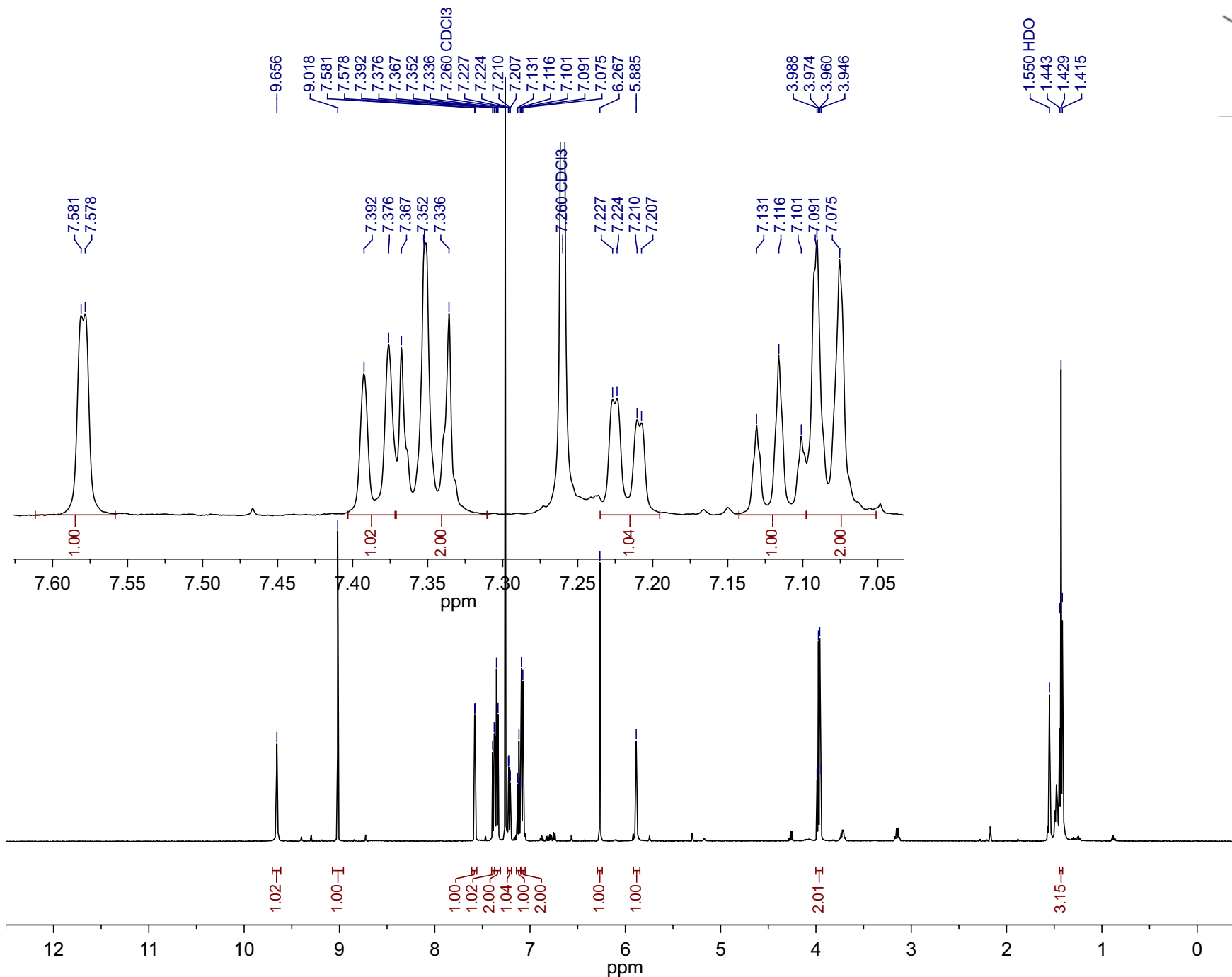
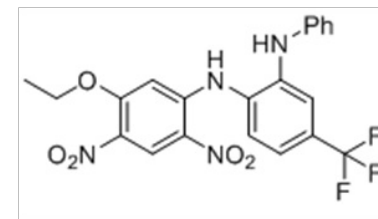


***N*¹-(5-Ethoxy-2,4-dinitrophenyl)-*N*²-phenyl-4-(trifluoromethyl)benzene-1,2-diamine (5)**



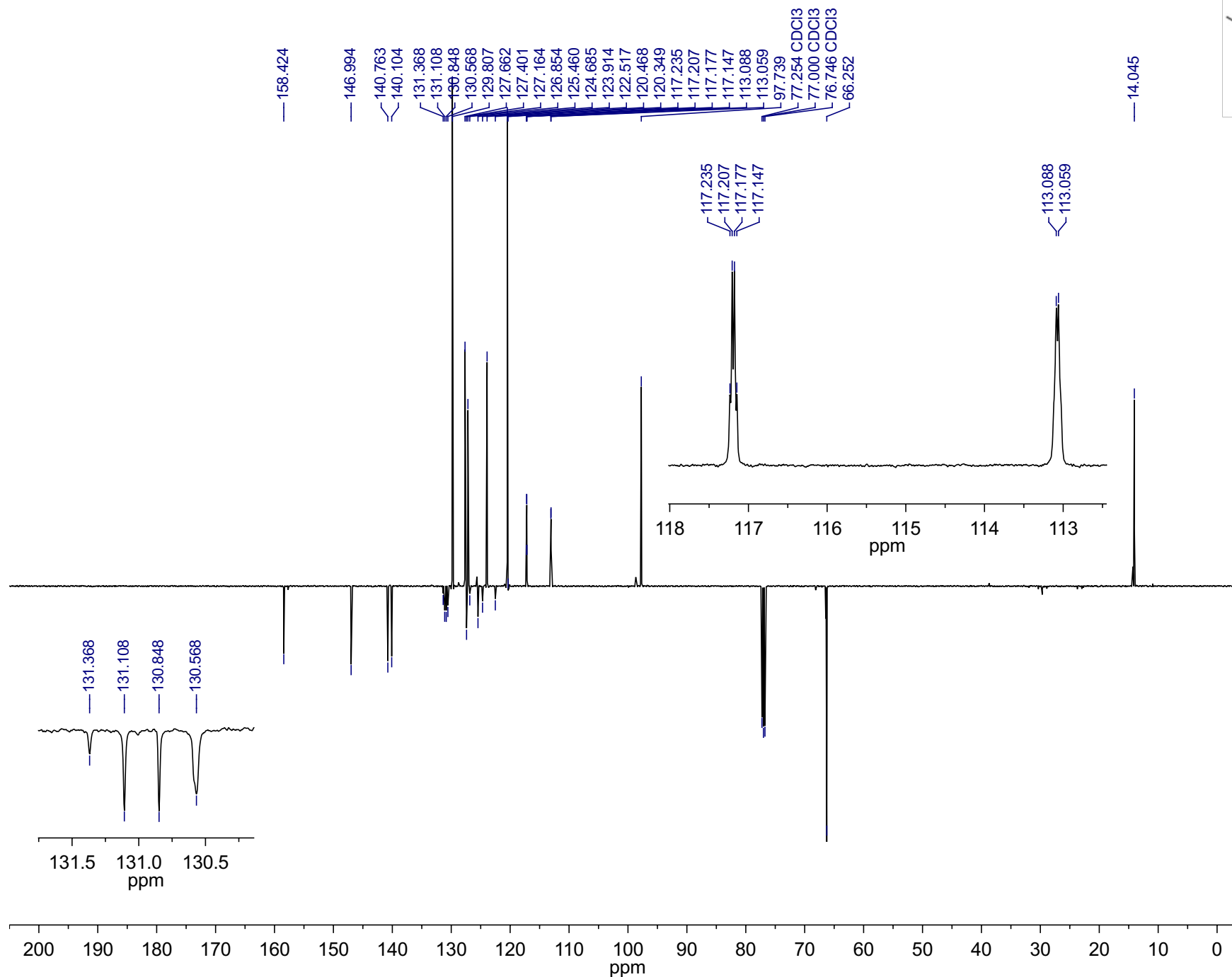
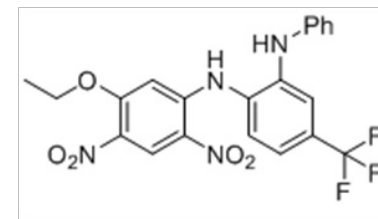
EXPNO 1065
PROCNO 1

F2 - Acquisition Parameters
Date_ 20151110
Time 16.03
INSTRUM spect
PROBHD 5 mmFABBO BB-
PULPROG zg30
TD 65536
SOLVENT CDCl₃
NS 16
DS 2
SWH 10000.000 Hz
FIDRES 0.152588 Hz
AQ 3.2767999 sec
RG 181
DW 50.000 usec
DE 6.50 usec
TE 296.9 K
D1 1.00000000 sec
TD0 1

===== CHANNEL f1 =====
SFO1 500.0361158 MHz
NUC1 ¹H
P1 11.75 usec
PLW1 15.41699982 W

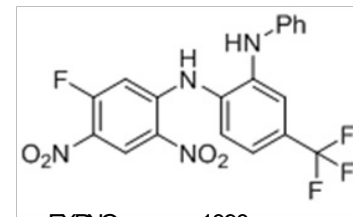
F2 - Processing parameters
SI 65536
SF 500.0330402 MHz
WDW EM
SSB 0
LB 0.30 Hz
GB 0
PC 1.00

***N*¹-(5-Ethoxy-2,4-dinitrophenyl)-*N*²-phenyl-4-(trifluoromethyl)benzene-1,2-diamine (5)**



EXPNO 1073
 PROCNO 1
 F2 - Acquisition Parameters
 Date_ 20151119
 Time 11.47
 INSTRUM spect
 PROBHD 5 mm PABBO BB-
 PULPROG jmod
 TD 65536
 SOLVENT CDCl₃
 NS 16580
 DS 4
 SWH 29761.904 Hz
 FIDRES 0.454131 Hz
 AQ 1.1010048 sec
 RG 2050
 DW 16.800 usec
 DE 6.50 usec
 TE 297.3 K
 CNST2 145.000000
 CNST11 1.000000
 D1 2.0000000 sec
 D20 0.00689655 sec
 TD0 1
 ===== CHANNEL f1 =====
 SFO1 125.7459782 MHz
 NUC1 13C
 P1 8.70 usec
 P2 17.40 usec
 PLW1 138.0000000 W
 ===== CHANNEL f2 =====
 SFO2 500.0350280 MHz
 NUC2 1H
 CPDPRG2 waltz16
 PCPD2 80.00 usec
 PLW2 15.41699982 W
 PLW12 0.33258000 W
 F2 - Processing parameters
 SI 32768
 SF 125.7334093 MHz
 WDW EM
 SSB 0
 LB 1.00 Hz
 GB 0
 PC 1.40

***N*¹-(5-Fluoro-2,4-dinitrophenyl)-*N*²-phenyl-4-(trifluoromethyl)benzene-1,2-diamine (6)**

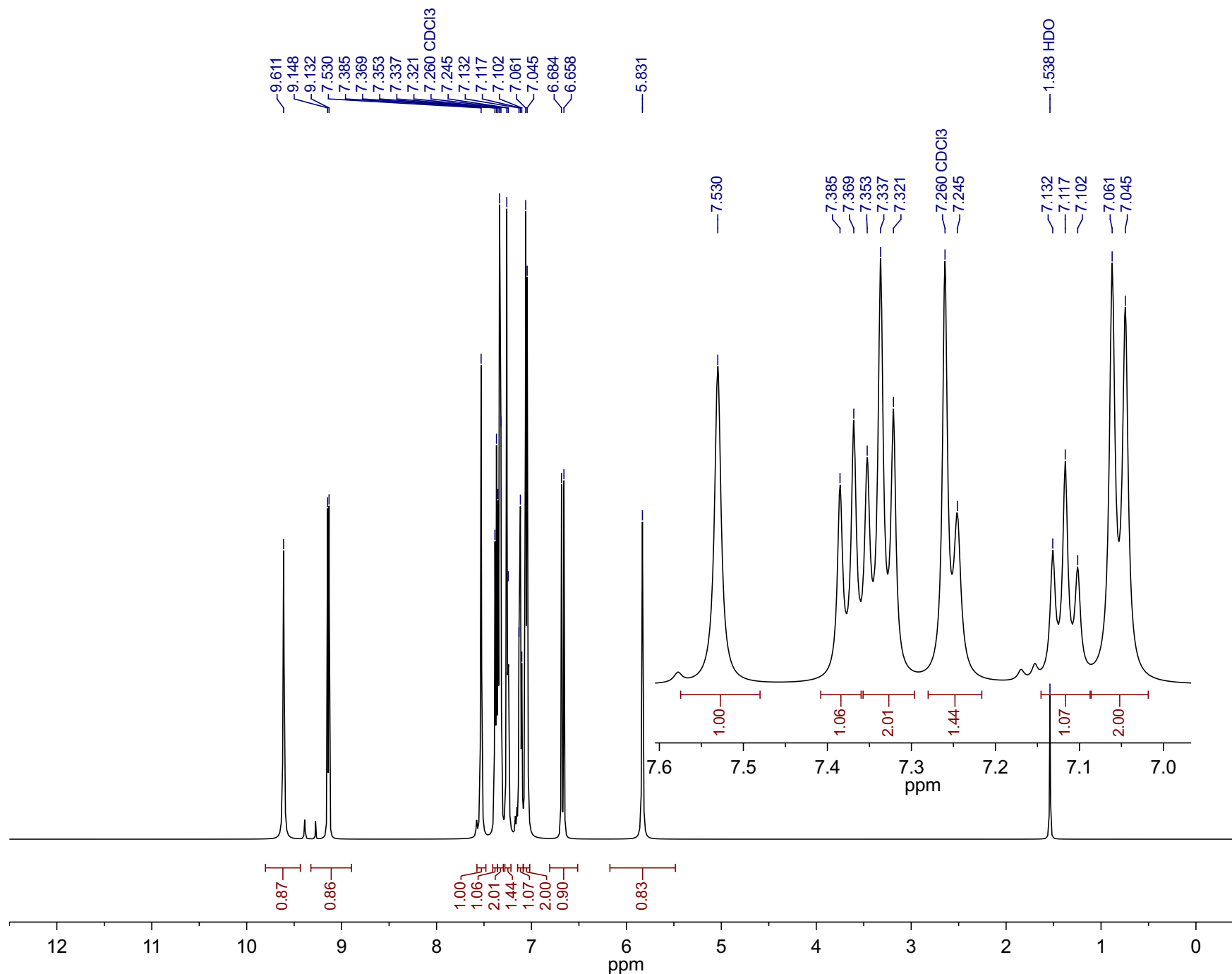


EXPNO 1090
PROCNO 1

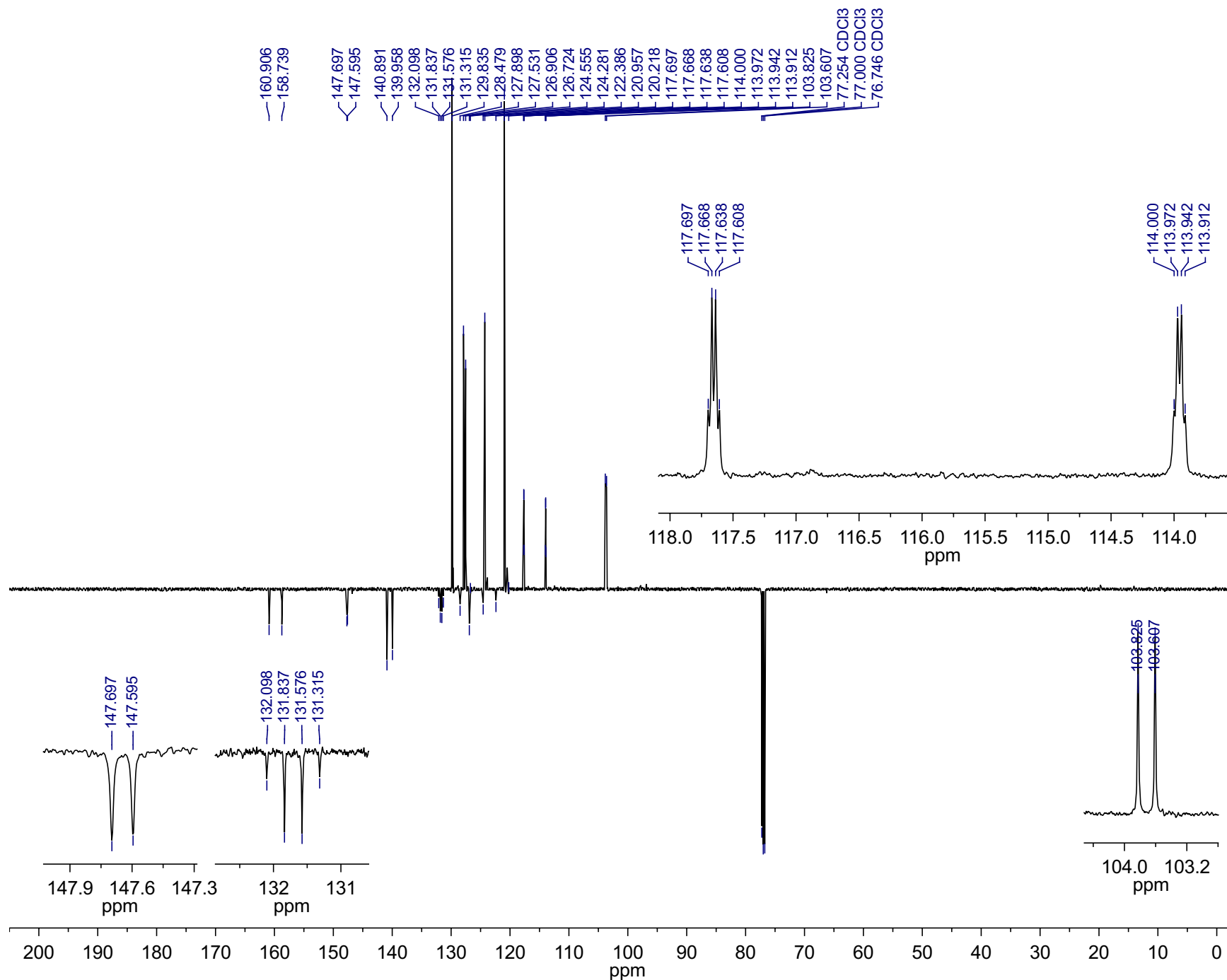
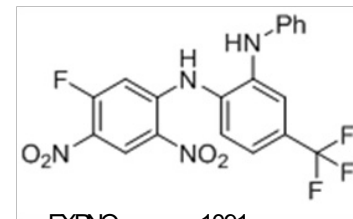
F2 - Acquisition Parameters
Date_ 20151128
Time 14.10
INSTRUM spect
PROBHD 5 mmFABBO BB-
PULPROG zg30
TD 65536
SOLVENT CDCl3
NS 16
DS 2
SWH 10000.000 Hz
FIDRES 0.152588 Hz
AQ 3.2767999 sec
RG 144
DW 50.000 usec
DE 6.50 usec
TE 301.2 K
D1 1.00000000 sec
TD0 1

===== CHANNEL f1 =====
SFO1 500.0361158 MHz
NUC1 1H
P1 11.75 usec
PLW1 15.41699982 W

F2 - Processing parameters
SI 65536
SF 500.0330404 MHz
WDW EM
SSB 0
LB 0.30 Hz
GB 0
PC 1.00



***N*¹-(5-Fluoro-2,4-dinitrophenyl)-*N*²-phenyl-4-(trifluoromethyl)benzene-1,2-diamine (6)**



EXPNO	1091
PROCNO	1
F2 - Acquisition Parameters	
Date_	20151128
Time	14.15
INSTRUM	spect
PROBHD	5 mm PABBO BB-
PULPROG	jmod
TD	65536
SOLVENT	CDCl3
NS	6316
DS	4
SWH	29761.904 Hz
FIDRES	0.454131 Hz
AQ	1.1010048 sec
RG	1820
DW	16.800 usec
DE	6.50 usec
TE	301.7 K
CNST2	145.0000000
CNST11	1.0000000
D1	2.00000000 sec
D20	0.00689655 sec
TD0	1
===== CHANNEL f1 =====	
SFO1	125.7459782 MHz
NUC1	13C
P1	8.70 usec
P2	17.40 usec
PLW1	138.00000000 W
===== CHANNEL f2 =====	
SFO2	500.0350280 MHz
NUC2	1H
CPDPRG2	waltz16
PCPD2	80.00 usec
PLW2	15.41699982 W
PLW12	0.33258000 W
F2 - Processing parameters	
SI	32768
SF	125.7334067 MHz
WDW	EM
SSB	0
LB	1.00 Hz
GB	0
PC	1.40